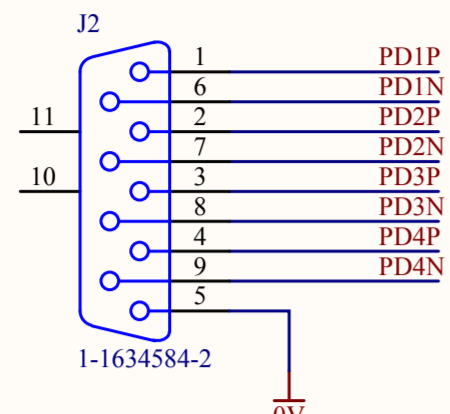
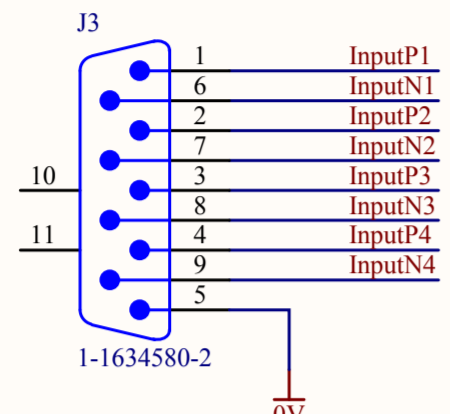


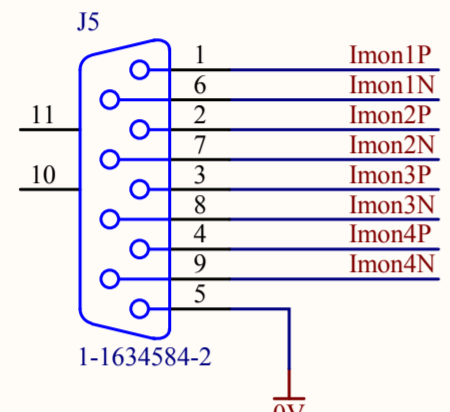
### PHOTODIODE OUTPUTS



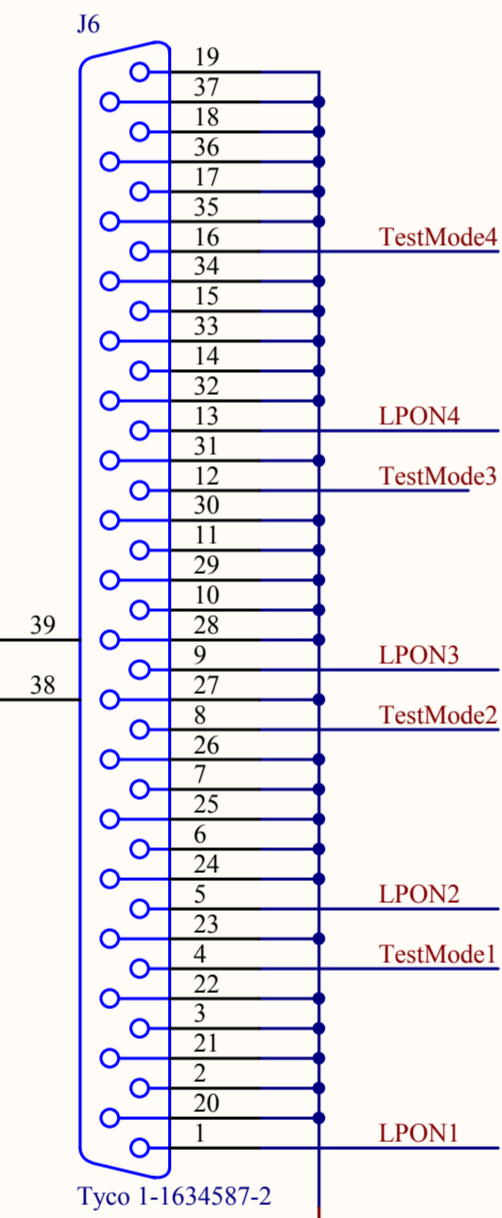
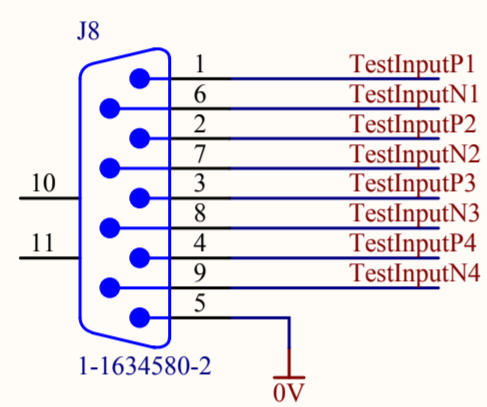
### DEMANDS



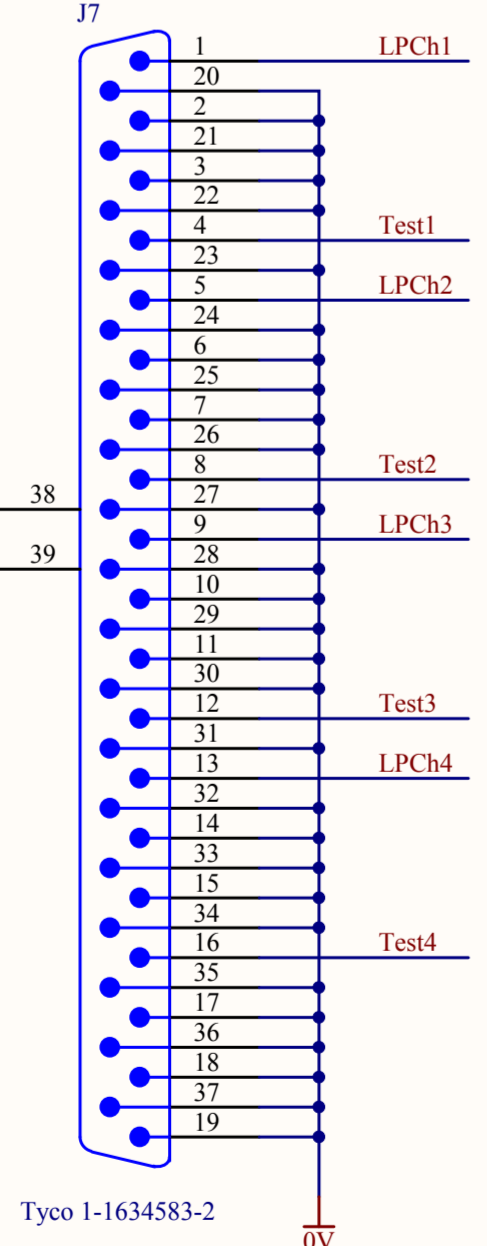
### CURRENT SOURCE MONITORS



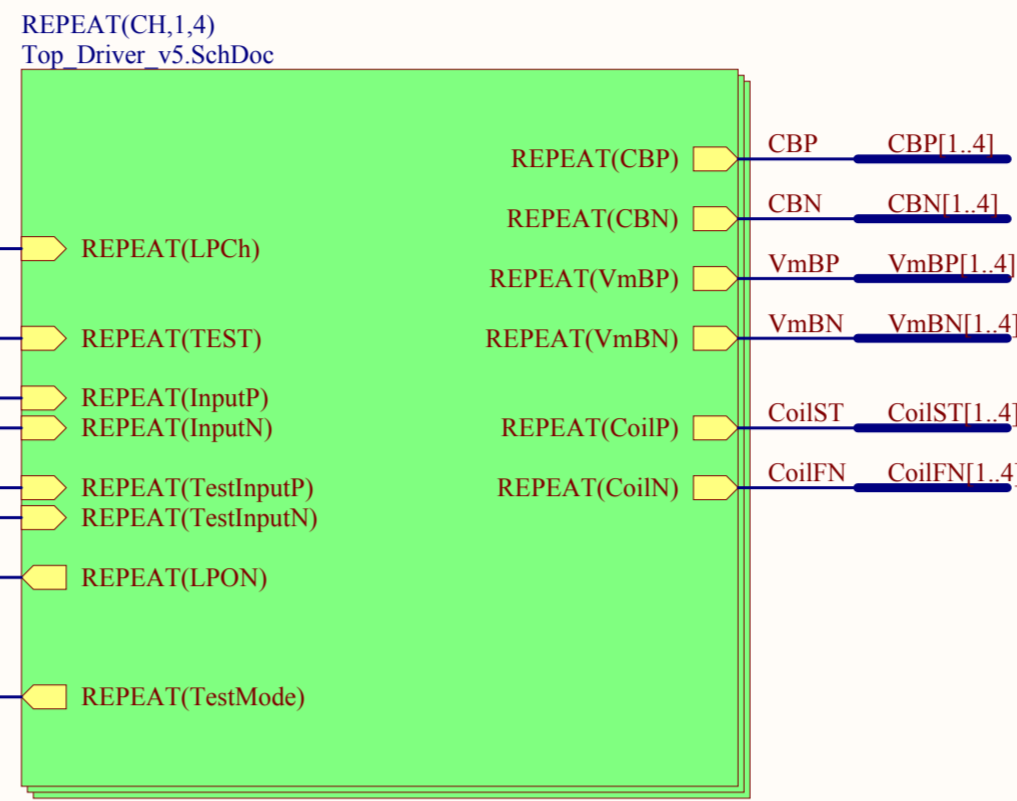
### Front Panel Test Inputs



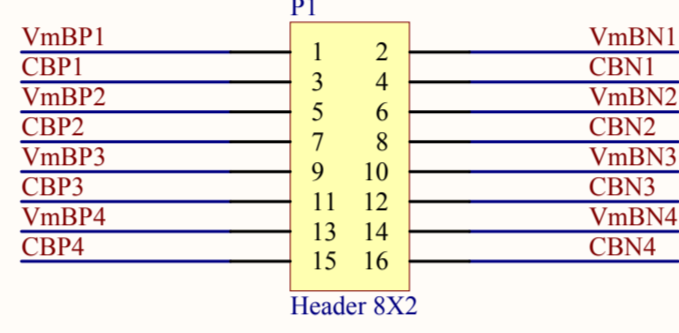
### Relay Monitors D Connector 37 Way Female



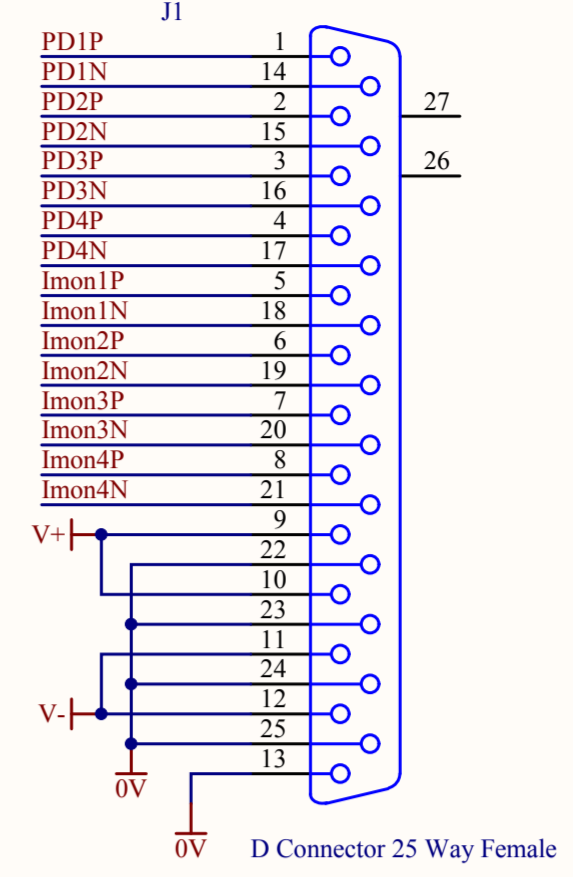
### Relay Commands D Connector 37 Way Male



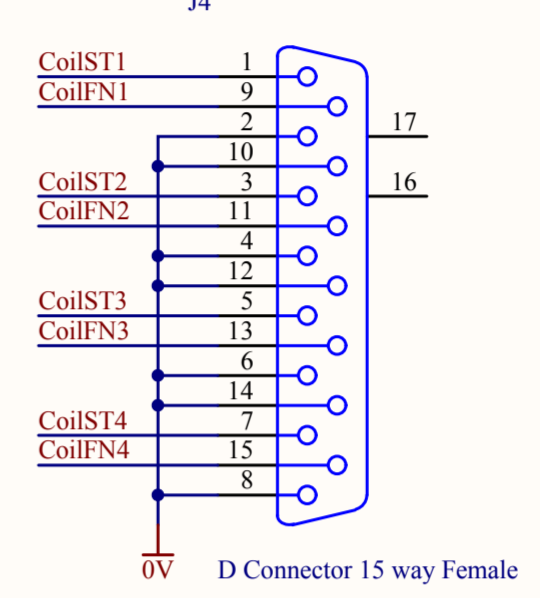
### Connections to Monitor Board



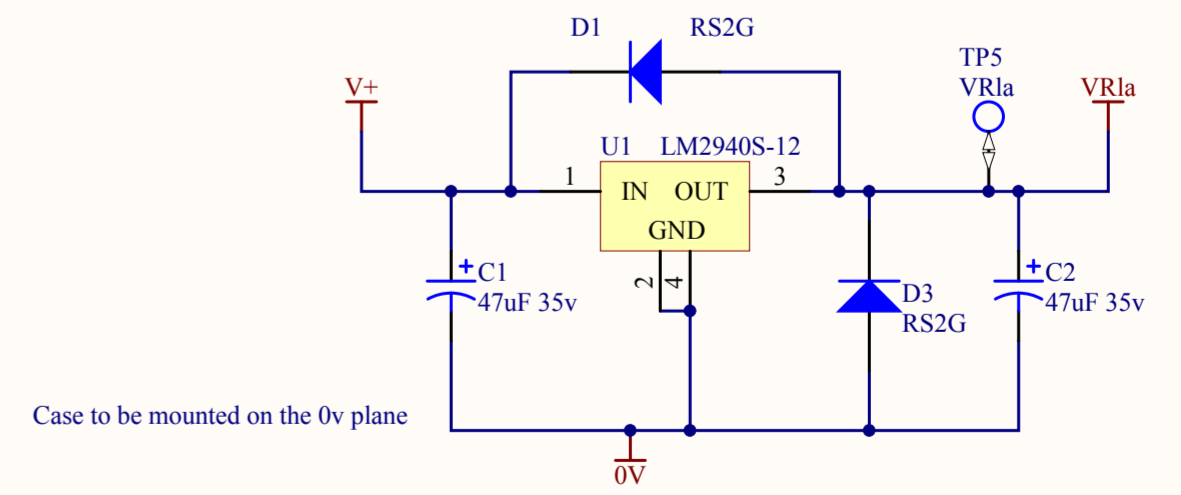
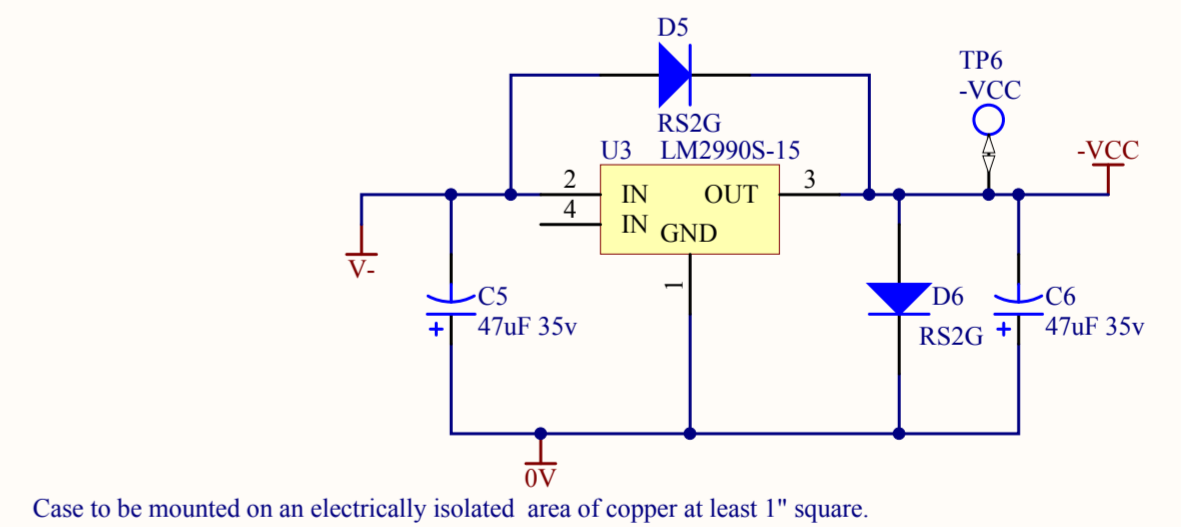
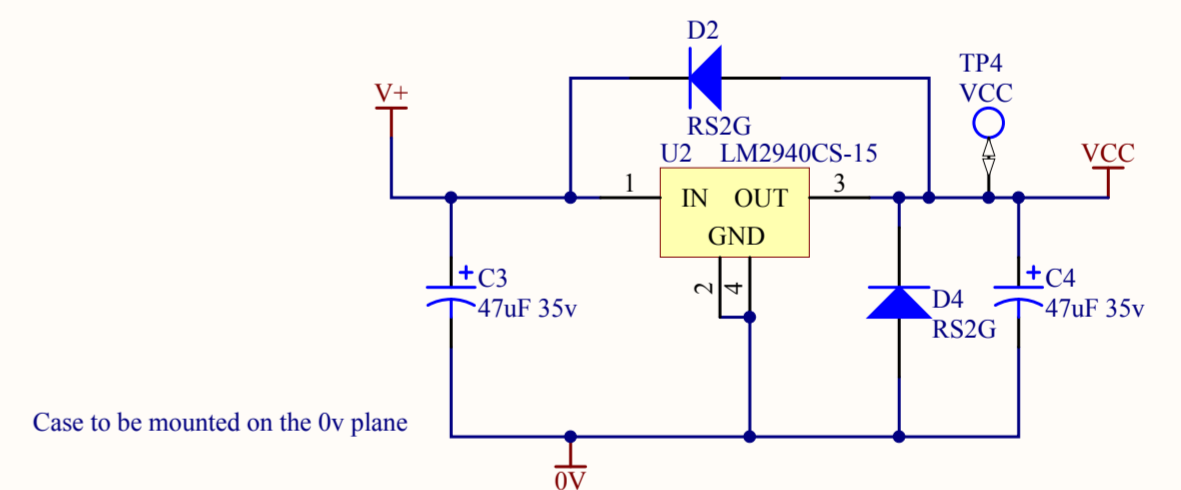
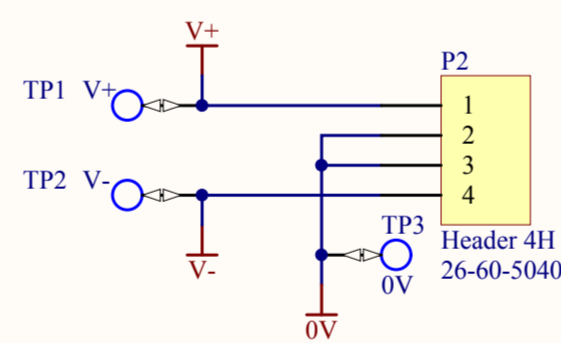
### FROM SATELLITE BOX



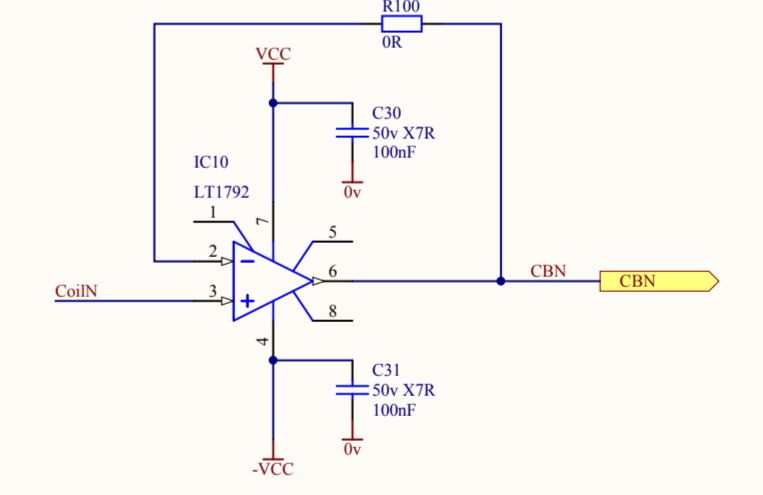
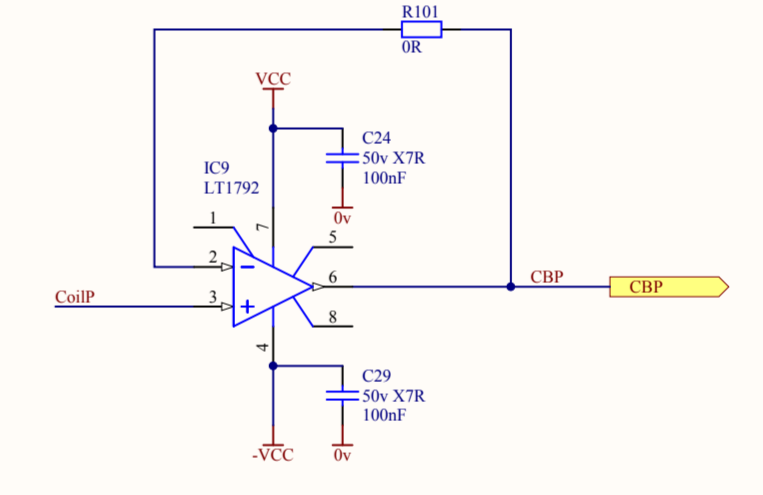
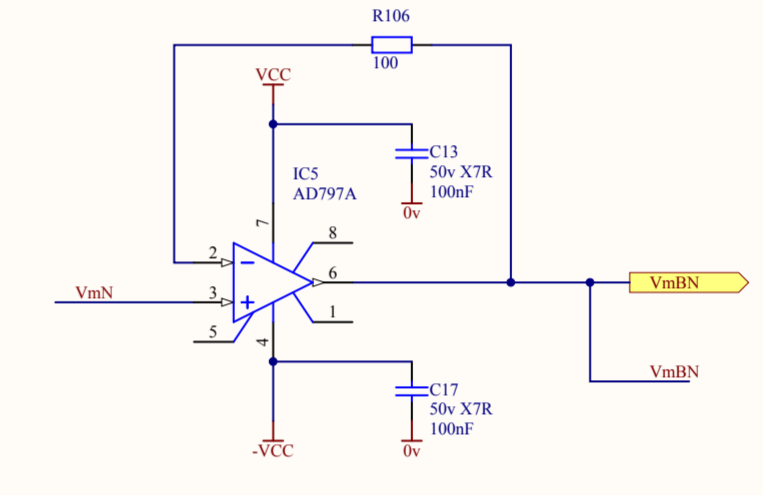
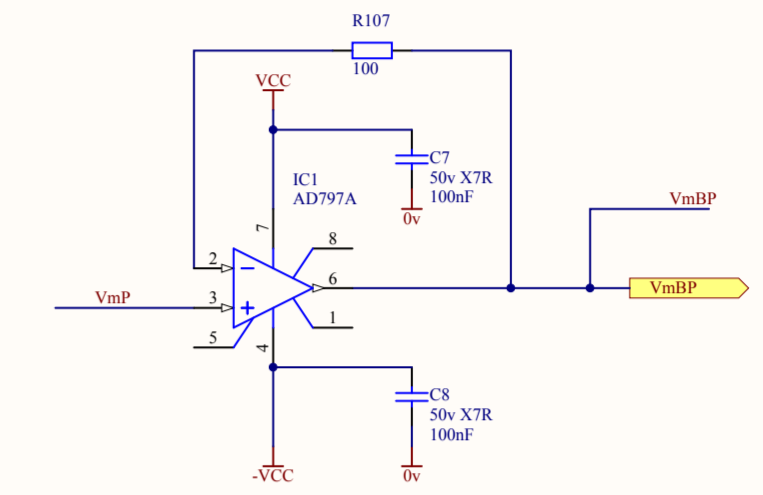
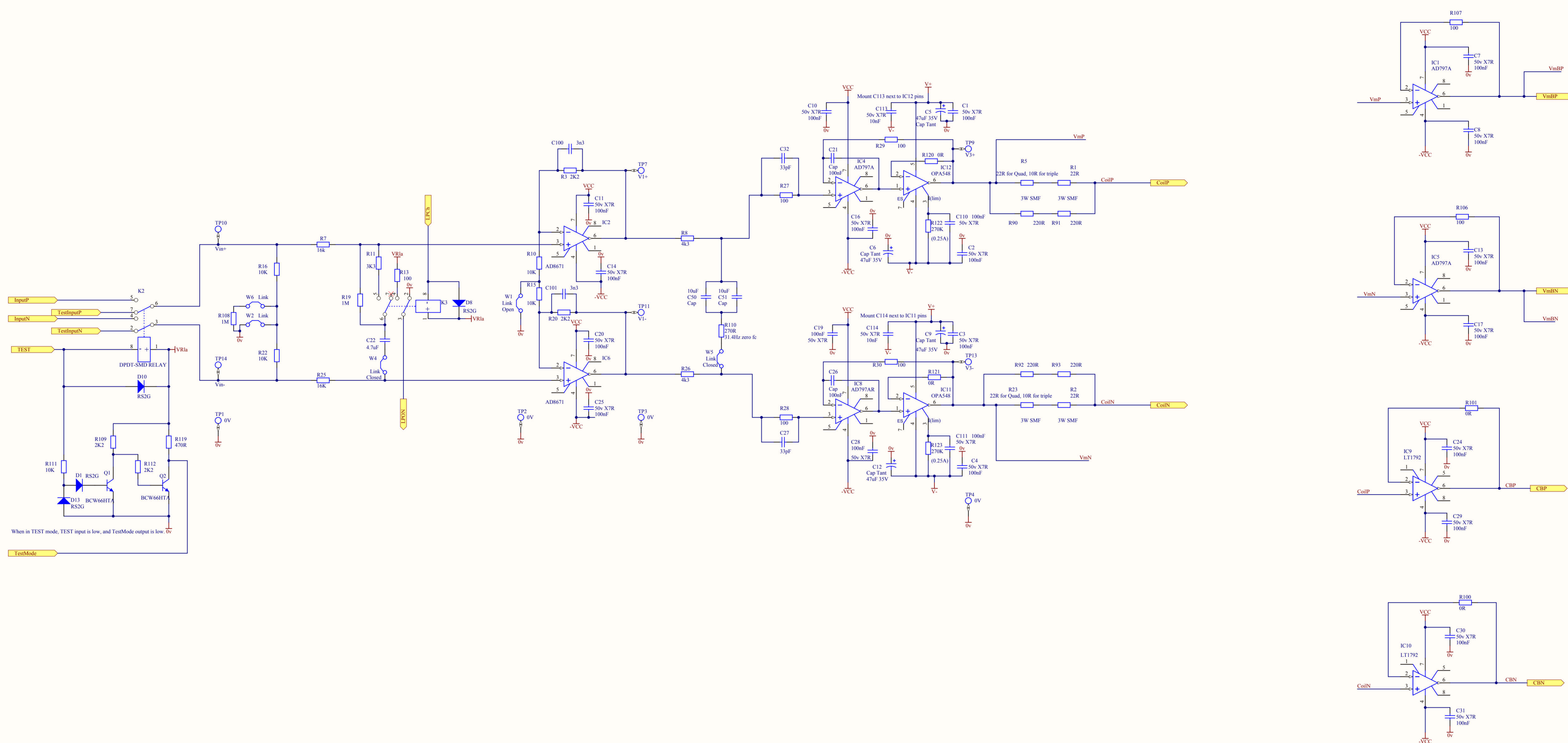
### TO SATELLITE BOX



### Power connection to rear panel



TOP BOARD - Production		
Size C	Number <b>D0902747</b>	Revision <b>1</b>
Date: 30/11/2009	Sheet 1 of 2	
File: G:\Ron\Top Board_v6.SchDoc	Drawn By: Ron Cutler	



TOP DRIVER CHANNEL - Production			
Size	Number	Revision	
D	D0902747	1	
Date	10/11/2009	Sheet 2 of 2	
File	G:\Rom...Top_Driver_v6.SchDoc	Drawn By:	Ron Cutler