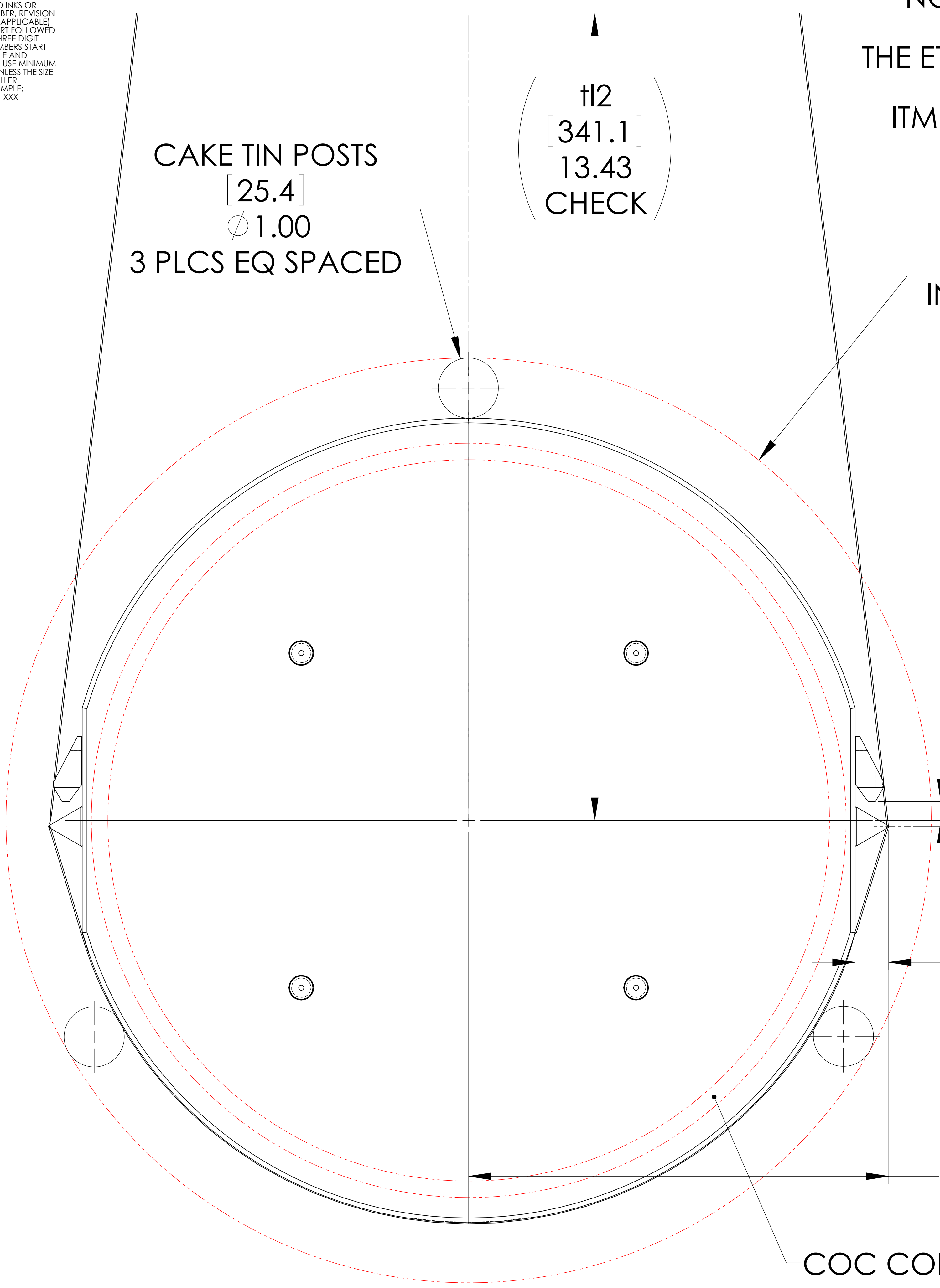


NOTES CONTINUED:  
 (S) SCRIBE, ENGRAVE (A VIBRATORY TOOL MAY BE USED), LASER MARK OR MECHANICALLY STAMP (NO INKS OR DYES) DRAWING PART NUMBER, REVISION (AND VARIANT OR TYPE IF APPLICABLE) ON NOTED SURFACE OF PART FOLLOWED ON THE NEXT LINE WITH A THREE DIGIT SERIAL NUMBER. SERIAL NUMBERS START AT 001 FOR THE FIRST ARTICLE AND PROCEED CONSECUTIVELY. USE MINIMUM 0.12" HIGH CHARACTERS, UNLESS THE SIZE OF THE PART DICTATES SMALLER CHARACTERS. EXAMPLE: DXXXXXX-VY, TYPE-XX, S/N XXX

NOTE: ALTHOUGH IDENTIFIED WITH A DIFFERENT PART NUMBER, THE ETM PENULTIMATE MASS (D0902823) IS IDENTICAL TO THE ITM PENULTIMATE MASS (D1001035), AND MAY BE USED INTERCHANGEABLY AT HIGHER LEVEL ASSEMBLIES.

REV.	DATE	DCN #	DRAWING TREE #
X-000	DEC09	(K, BUCKLAND)	
X-001	APR10	CORRECTED ASSEMBLY PARTS AND BOND LOCATIONS (R, JONES)	
v3	06 MAR 2014	E1300970-x0	



CAKE TIN INNER DIAMETER

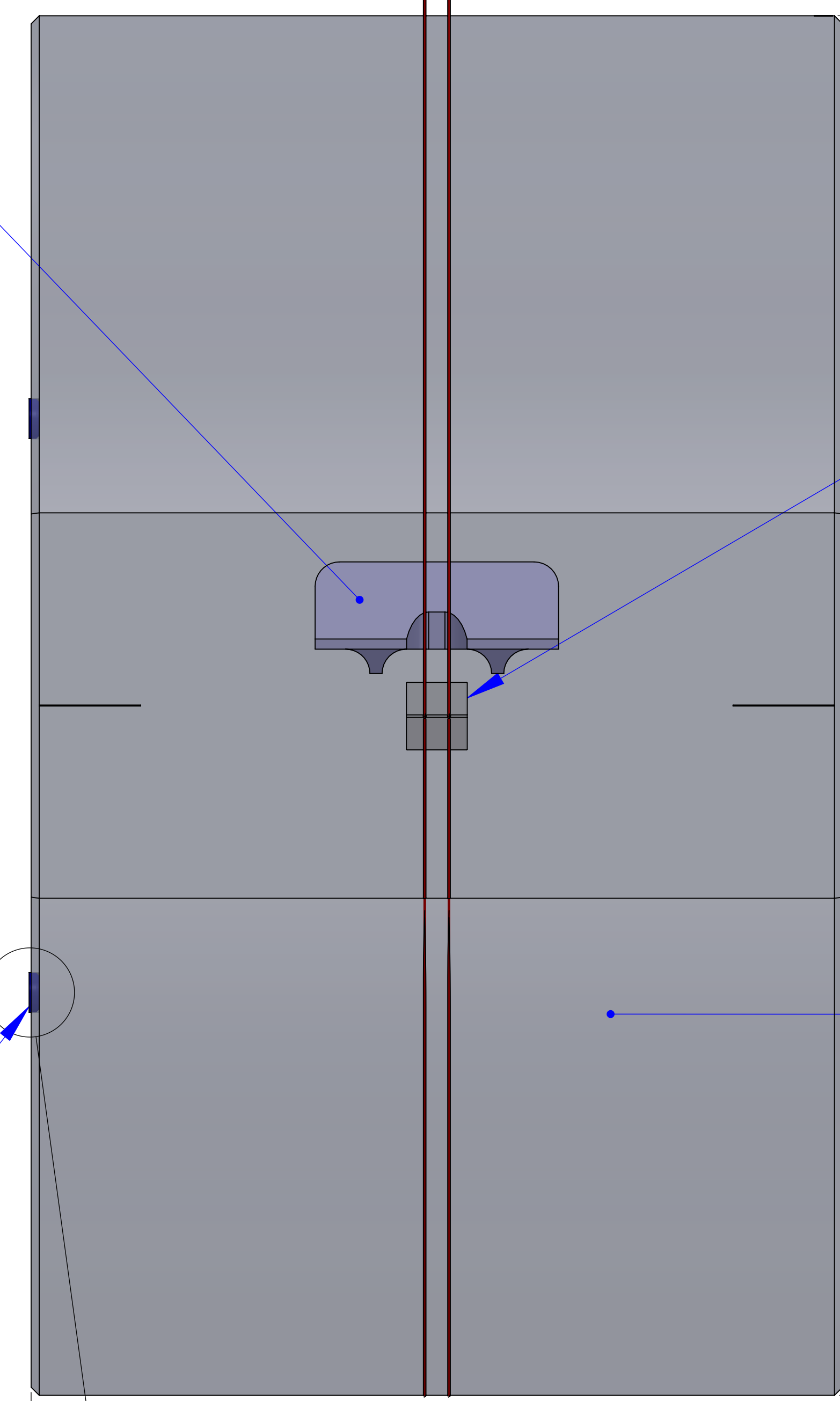
2X (2)  
 (EAR TIP)  
 [7.9]  
 .31

(PRISM BREAKOFF)  
 [2.6]  
 .10

(PRISM HEIGHT)  
 [14.2]  
 .56

4X (5)  
 ([177.43])  
 6.99

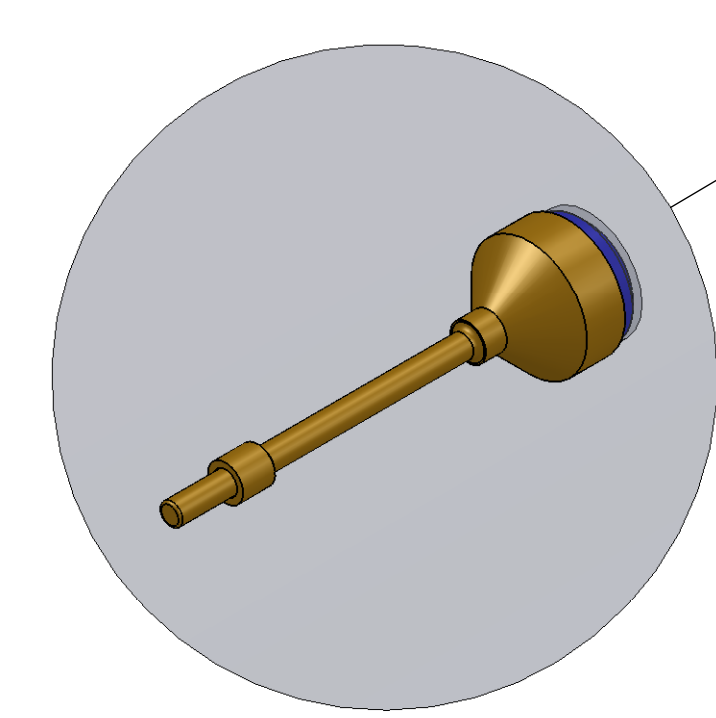
(6)  
 .24



2X (3)

(340)  
 13.39

(200)  
 7.87

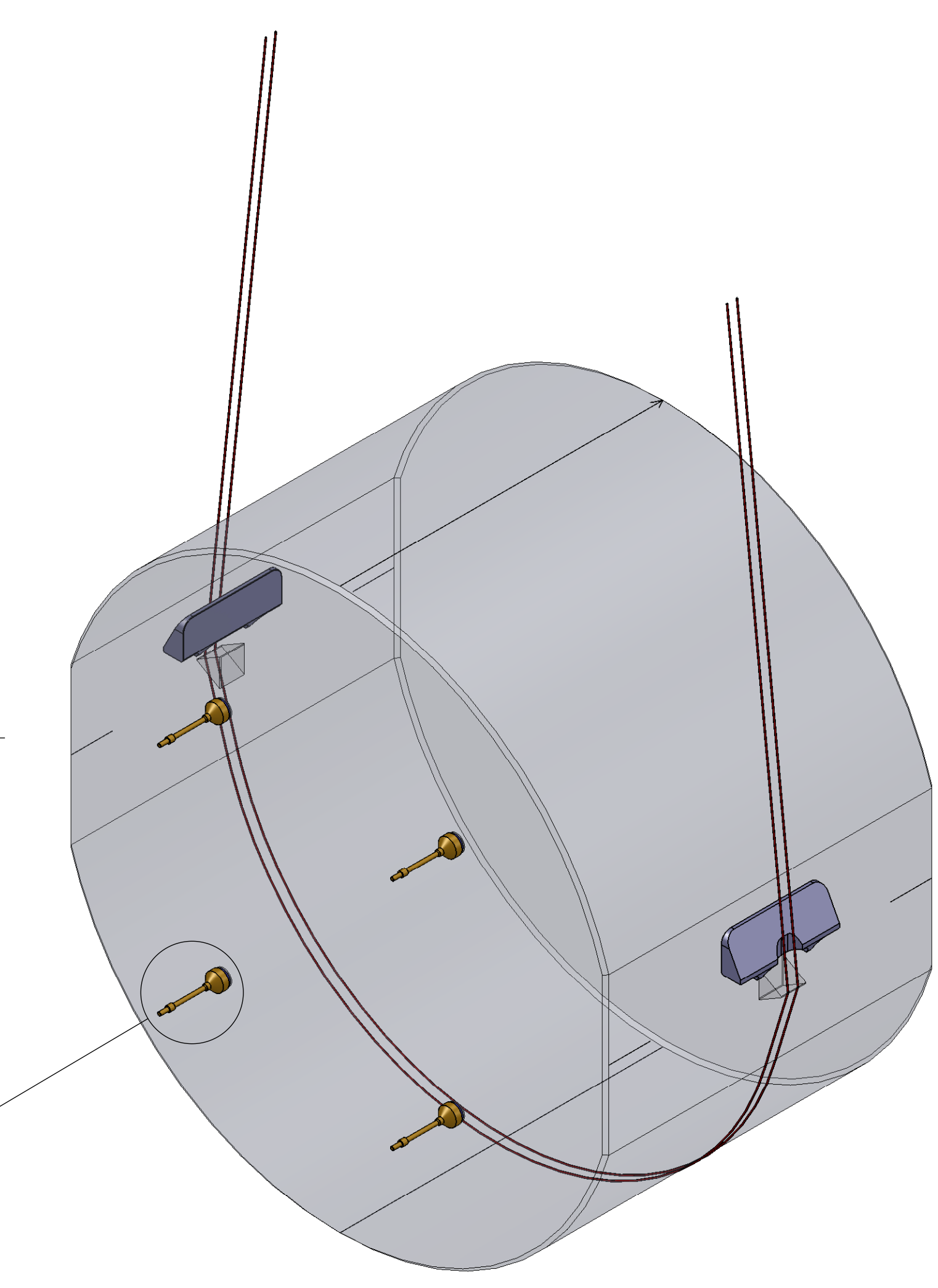
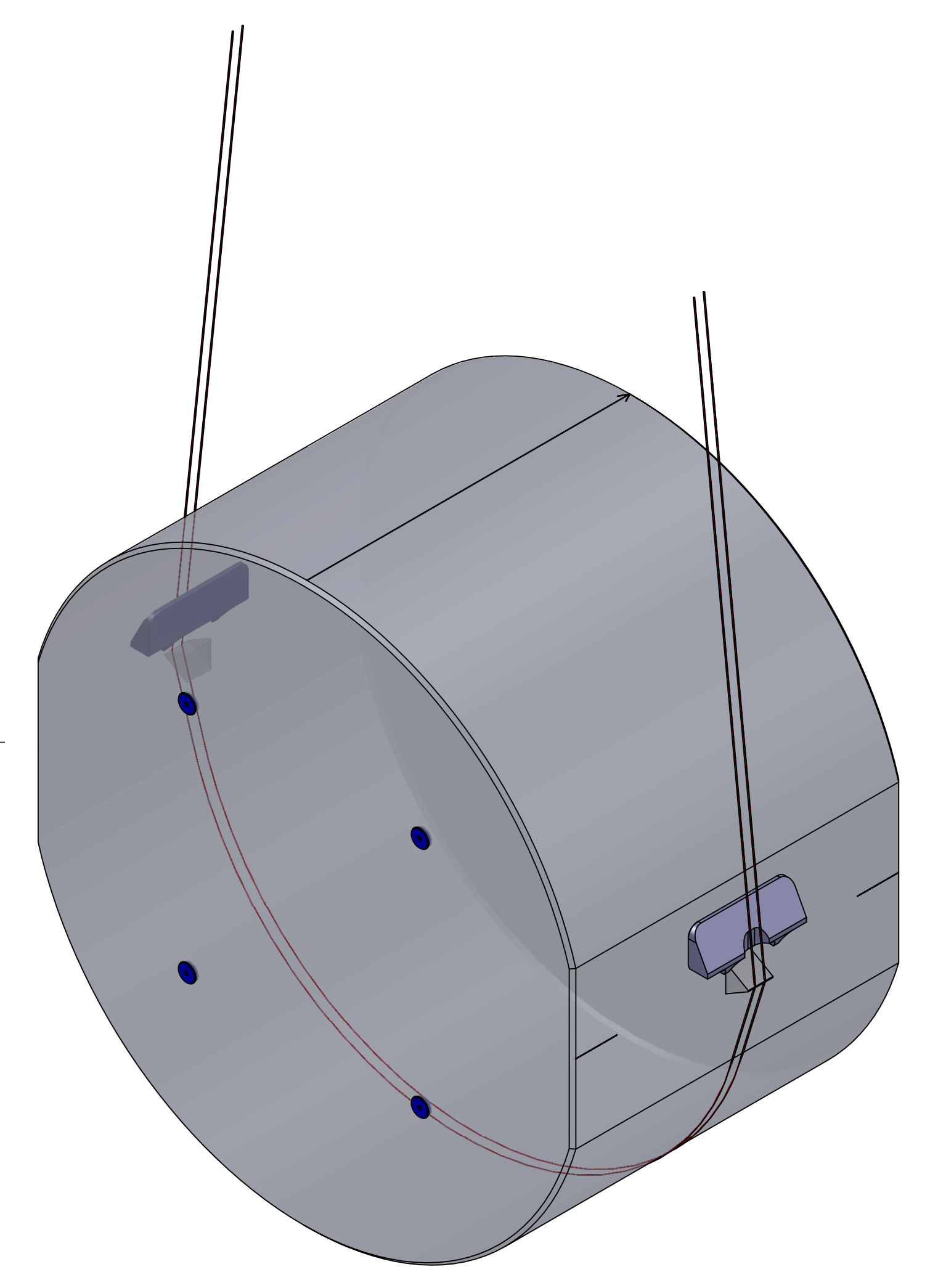
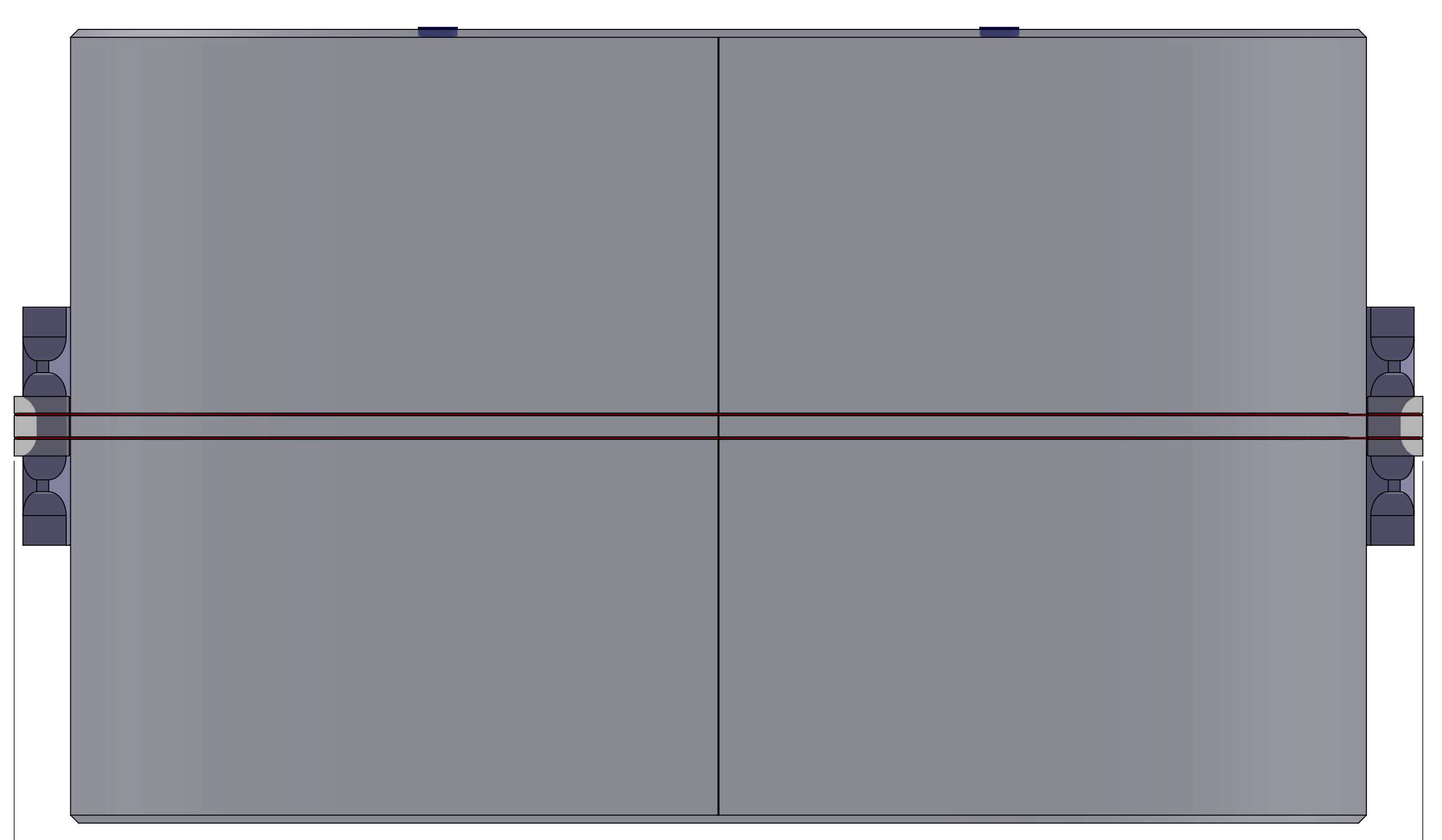


(0.5)  
 .02

D1001124  
 ASSEMBLED AS PART  
 OF D070234

DETAIL B  
 SCALE 4 : 1

(2)  
 .08



DIMENSIONS ARE IN INCHES [MM]		TOLERANCES: XX ± XXX ±		ANGULAR ± °	
MATERIAL	N/A	FINISH	N/A	µinch	

NOTES AND TOLERANCES (UNLESS OTHERWISE SPECIFIED)	SYSTEM	SUB-SYSTEM	NEXT ASSY
1. INTERPRET DRAWING PER ASME Y14.5-1994. 2. REMOVE ALL SHARP EDGES, R.02 MIN. 3. DO NOT SCALE FROM DRAWING. 4. ALL MACHINING FLUIDS MUST BE FULLY SYNTHETIC, FULLY WATER SOLUBLE AND FREE OF SULFUR, SILICONE, AND CHLORINE.	ADVANCED LIGO	COC	MULTIPLE

ITEM NO.	PART NUMBER	DESCRIPTION	MATERIAL	QTY.
5	D070234	ALIGO, SUS, PENULTIMATE MASS, PEN RE MASS MAGNETS (EXTERNAL SHIELDED MAGNETS)	N/A	4
4	D1001028	ALIGO, SUS, ETM/ITM PENULTIMATE MASS, WIRE LOOP	PIANO WIRE	2
3	D080479	ALIGO, SUS, ETM/ITM PM, WIRE BREAK-OFF PRISM	SAPPHIRE	2
2	D090007	Production Ear_with recess	Suprasil 312	2
1	D080117	ALIGO, SUS, ETM QUAD, PENULTIMATE MASS	AS PER LIGO E080090	1

PART NAME		DESIGNER	DATE	SIZE	DWG. NO.	REV.
ETM Penultimate Mass (PM) WITH PRISMS AND EARS		UK/SJS	APR10	E	D0902823	v3
SCALE: 1:1		PROJECTION:		SHEET 1 OF 1		