

8

7

6

5

4

3

2

1

NOTES CONTINUED:

5 SCRIBE, ENGRAVE (A VIBRATORY TOOL MAY BE USED), LASER MARK OR MECHANICALLY STAMP (NO INKS OR DYES) DRAWING PART NUMBER, REVISION (AND VARIANT OR "TYPE" IF APPLICABLE) ON NOTED SURFACE OF PART FOLLOWED ON THE NEXT LINE WITH A THREE DIGIT SERIAL NUMBER. SERIAL NUMBERS START AT 001 FOR THE FIRST ARTICLE AND PROCEED CONSECUTIVELY. USE MINIMUM 0.12" HIGH CHARACTERS, UNLESS THE SIZE OF THE PART DICTATES SMALLER CHARACTERS. EXAMPLE: DXXXXXX-VY, TYPE-XX, S/N XXX

6. APPROXIMATE WEIGHT = 0.20 lb [90.1 g].

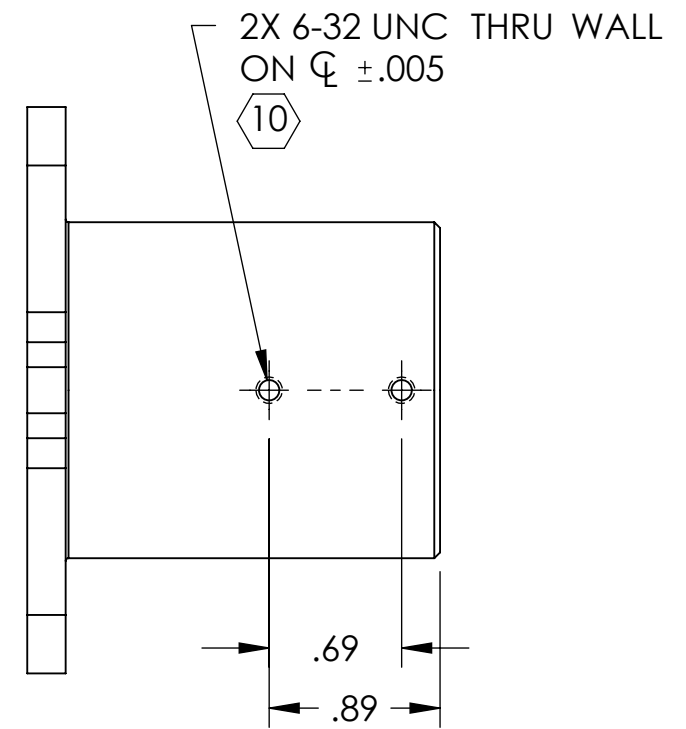
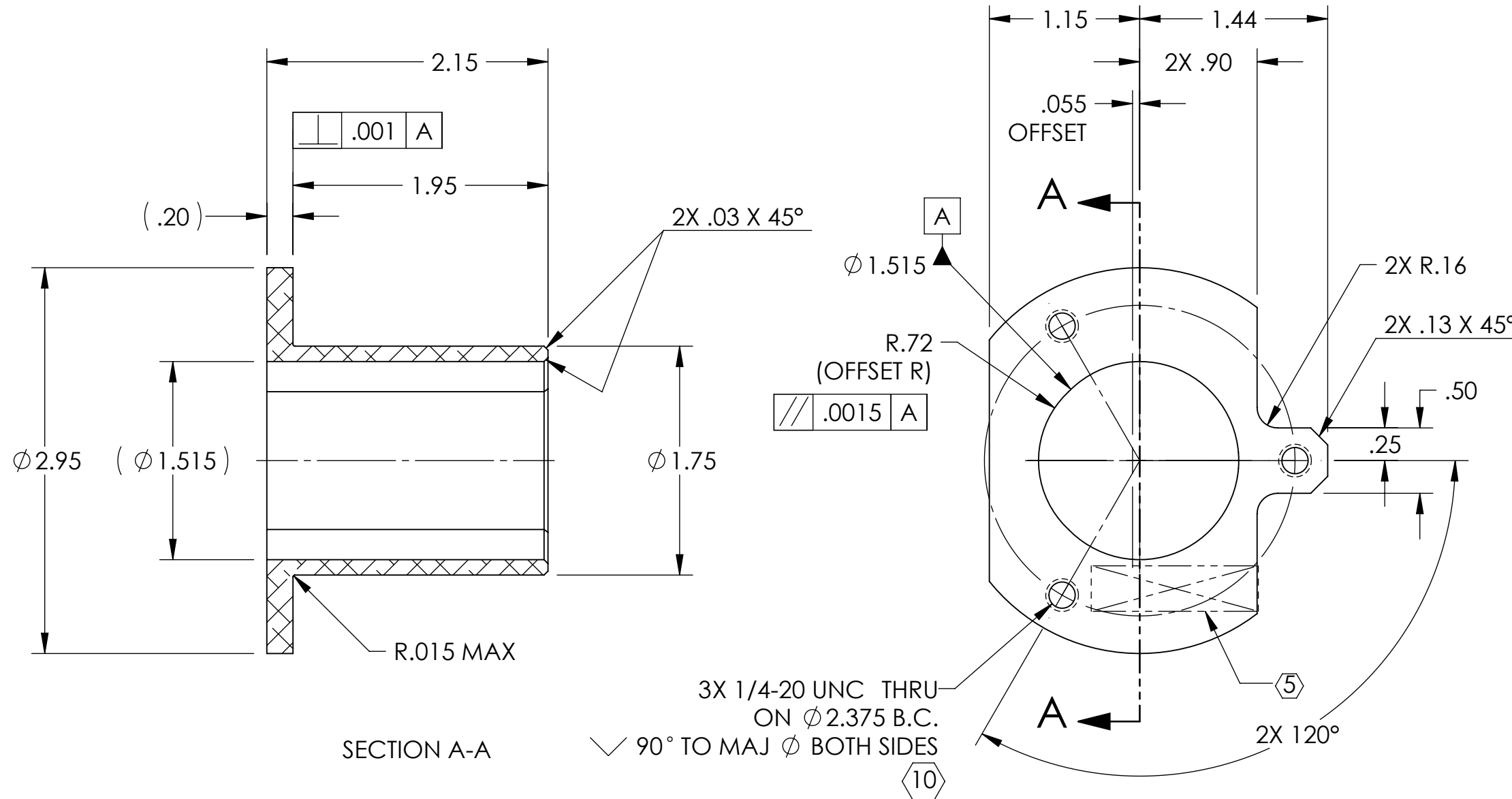
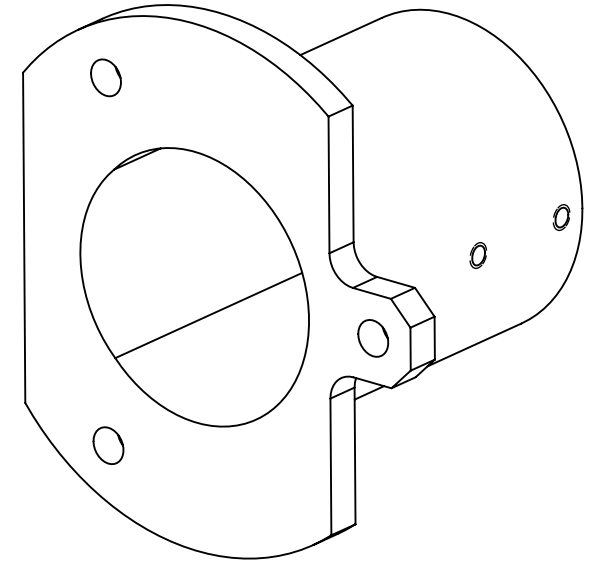
7. MACHINE ALL SURFACES TO REMOVE OXIDES AND MILL FINISH. USE OF ABRASIVE REMOVAL TECHNIQUES IS NOT ALLOWED.

8. ALL PARTS SHALL BE MANUFACTURED IN ACCORDANCE WITH LIGO SPECIFICATION E0900364.

9. ALL MATERIAL IS TO BE VIRGIN MATERIAL (i.e. NO WELD REPAIRS OR PLUGS UNLESS APPROVED IN ADVANCE IN WRITING BY LIGO). REFER TO LIGO SPECIFICATION E0900364.

10 ALL TAPPED HOLES: .005" OVERSIZE BOTH DRILL AND TAP.

REV.	DATE	DCN #	DRAWING TREE #
v1	24 JAN 2011	E1100062-v1	-
v2	10 MAR 2011	E1100080-v1	-
-	-	-	-



D0902829 aLigo_Sleeve_Alignment_Telescope, PART PDM REV: X-037, DRAWING PDM REV: X-019

NOTES AND TOLERANCES: (UNLESS OTHERWISE SPECIFIED)

DIMENSIONS ARE IN INCHES	
TOLERANCES: .XX ± .01 .XXX ± .005 ANGULAR ± 1.0°	
MATERIAL	6061-T6 Al
FINISH	63 µinch Ra

LIGO CALIFORNIA INSTITUTE OF TECHNOLOGY
MASSACHUSETTS INSTITUTE OF TECHNOLOGY

SYSTEM: **ADVANCED LIGO** SUB-SYSTEM: **AOS**

NEXT ASSY: **D1003120**

PART NAME: **aLIGO SLEEVE ALIGNMENT TELESCOPE**

DESIGNER	K. MAILAND	05 JAN 2011	SIZE	DWG. NO.	REV.
DRAFTER	M. MILLER	07 JAN 2011	B	D0902829	v2
CHECKER			SCALE: NONE	PROJECTION:	SHEET 1 OF 1
APPROVAL					

8

7

6

5

4

3

2

1