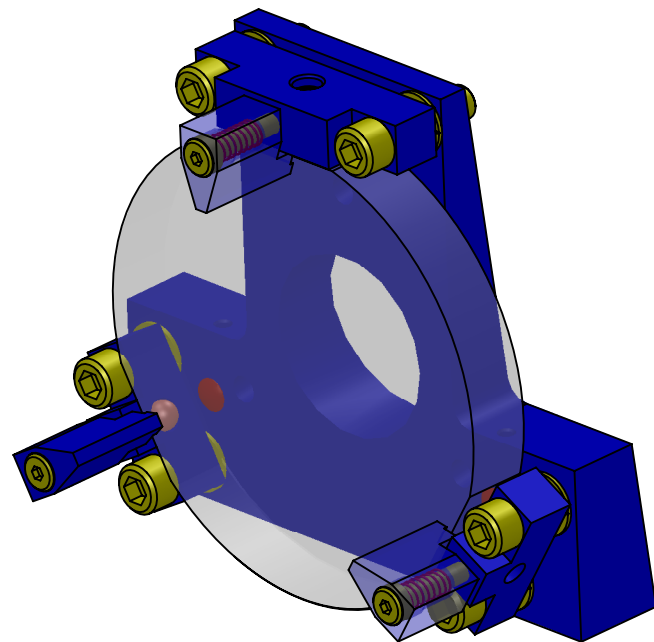


NOTES CONTINUED:
 5. BAG AND TAG ASSEMBLIES INDIVIDUALLY WITH THEIR DRAWING NUMBER, REVISION, VARIANT OR "TYPE" (IF APPLICABLE), AND QUANTITY. EXAMPLE (TAG): DXXXXXX-VY, TYPE-XX, QTY: 1
 6. APPROXIMATE WEIGHT = 1.07 LB. [1.486 KG.]
 7. ALL PARTS SHALL BE MANUFACTURED IN ACCORDANCE WITH LIGO SPECIFICATION E0900364.
 8. ALL MATERIAL IS TO BE VIRGIN MATERIAL (i.e. NOT WELD REPAIRS OR PLUGS UNLESS APPROVED IN ADVANCE IN WRITING BY LIGO. REFER TO LIGO-E0900364.
 9. NO REPAIRS SHALL BE MADE UNLESS APPROVED IN ADVANCE, AND IN WRITING, BY LIGO LABORATORY. IN GENERAL WELD REPAIRS AND PRESS FIT INSERT REPAIRS ARE NEVER ACCEPTABLE; THE MATERIAL SHOULD BE MADE WITH VIRGIN MATERIAL. SPECIAL CIRCUMSTANCES CAN BE REVIEWED IF / WHEN BROUGHT TO THE ATTENTION OF LIGO CONTRACTING OFFICER'S REPRESENTATIVE (COTR) THROUGH A MATERIAL REVIEW BOARD (MRB) PROCESS. REFER TO LIGO-E0900364.
 10. ELECTRO-POLISH INDICATED HARDWARE PER LIGO SPECIFICATION E0900364, SECTION 5.2.2.

REV.	DATE	DCN #	BOM #
v1	13 DEC 2010	E1000735-v1	E1000734-v1
v2	23 MAR 2011	E1100262-v1	E1000734-v2
-	-	-	-



12	94035A999 (McM-Carr, special order) or equiv	PRECISION SKT SHLDR SCRW 5/32 O.D., 5/8 L, #6-32 X 3/16 THD	18-8 SSSL	3	1	4
11	70466S (Century Spring) or equiv	COMPRESSION SPRING .210 O.D., .018 W.D., .63 L, 3.4#/IN	302 SSSL	3	1	4
10	D1002465	ALIGO AOS TRANSMON F2 MIRROR CLAMP	6061-T6 Al	3	0	3
9	D1100522	TMS TELESCOPE SECOND FOLD MIRROR	BK7 GLASS	1	0	1
8	9529K44 (McM-Carr) or equiv	440C SS BALL 7/32" DIAMETER, GRADE 24	AISI 440C	3	2	5
7	99934A330 (McM-Carr) or equiv	SKT SET SCRW, 6-32 X 1/8 L, SILVER TIP	18-8 SSSL	3	1	4
6	99553A999 (McM-Carr) (special order) or equiv	OVAL TIP SKT SET SCREW 1/4-28 UNC, 3/8 LONG	316 SSSL	3	1	4
5	D1002458	ALIGO AOS TRANSMON F2 MIRROR SIDE CLAMP LOWER	6061-T6 Al	2	0	2
4	MS16995-51	SCREW, SOCKET HEAD CAP, 1/4-20 UNC-2A X 0.875 LONG	300 SSSL	6	2	8
3	D1002459	ALIGO AOS TRANSMON F2 MIRROR SIDE CLAMP UPPER	6061-T6 Al	1	0	1
2	.250 SST VENT FL WSHR	.255 ID, .468 OD, .032 TH	18-8 SSSL	6	2	8
1	D1000085	ALIGO F2 MIRROR WEDGE	6061-T6 Al	1	0	1
ITEM NO.	PART NUMBER	DESCRIPTION	Material	QTY.	SPARE QTY.	TOTAL QTY.

NOTES AND TOLERANCES: (UNLESS OTHERWISE SPECIFIED)

1. INTERPRET DRAWING PER ASME Y14.5-1994.
 2. REMOVE ALL SHARP EDGES, R.02 MIN.
 3. DO NOT SCALE FROM DRAWING.
 4. ALL MACHINING FLUIDS MUST BE FULLY SYNTHETIC, FULLY WATER SOLUBLE AND FREE OF SULFUR, SILICONE, AND CHLORINE.

DIMENSIONS ARE IN INCHES
 TOLERANCES:
 .XX ± .01
 .XXX ± .005
 ANGULAR ± °

LIGO CALIFORNIA INSTITUTE OF TECHNOLOGY
 MASSACHUSETTS INSTITUTE OF TECHNOLOGY

ADVANCED LIGO SUB-SYSTEM AOS

ALIGO F2 MIRROR NEST

DESIGNER C. CONLEY 17 SEP 2010
 DRAFTER M. MILLER 28 NOV 2010
 CHECKER
 APPROVAL

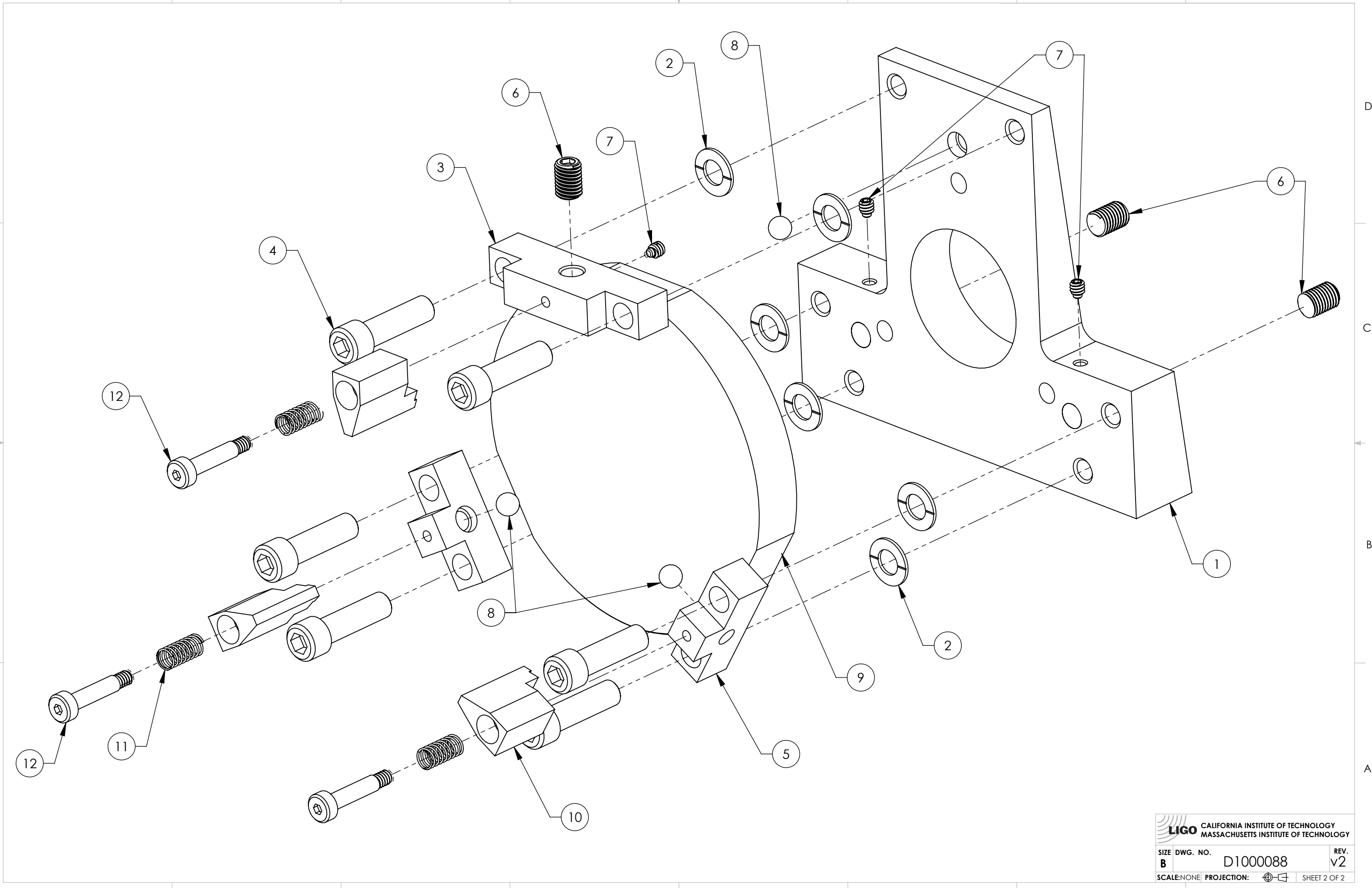
SIZE DWG. NO. **B** **D1000088** REV. **v2**


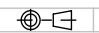
MATERIAL N/A FINISH N/A inch NEXT ASSY D1003120

SCALE: NONE PROJECTION: SHEET 1 OF 2

D1000088 ALIGO_F2_MIRROR_NEST, PART PDM REV: X-206, DRAWING PDM REV: X-054

D1000088 dLIGO_F2_MIRROR_NEST, PART PDM REV: X-206, DRAWING PDM REV: X-054



 CALIFORNIA INSTITUTE OF TECHNOLOGY MASSACHUSETTS INSTITUTE OF TECHNOLOGY	
SIZE DWG. NO.	REV.
B D1000088	v2
SCALE: NONE PROJECTION: 	SHEET 2 OF 2