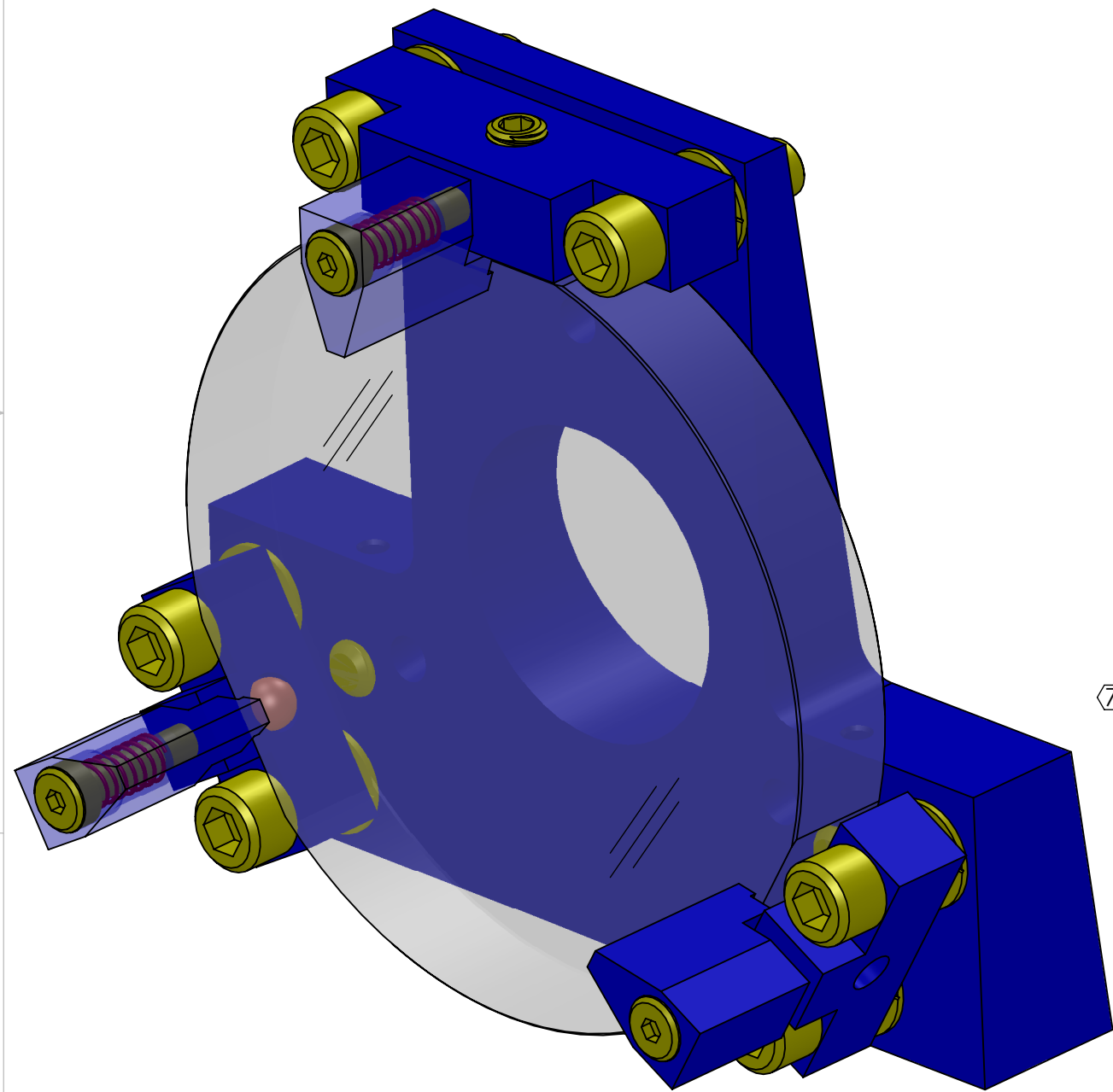


NOTES CONTINUED:
 5. BAG AND TAG ASSEMBLIES INDIVIDUALLY WITH THEIR DRAWING NUMBER, REVISION, AND SERIAL NUMBER. SERIAL NUMBERS START AT 001 FOR THE FIRST ARTICLE AND PROCEED CONSECUTIVELY.
 EXAMPLE (TAG): DXXXXXX-VY, S/N 001
 6. APPROXIMATE WEIGHT = 1.07 LB [.486 KG].
 7. ELECTRO-POLISH ITEMS 8. PER LIGO SPECIFICATION E0900364, SECTION 5.2.2.

REV.	DATE	DCN #	BOM #
v1	13 DEC 2010	E1000735-v1	E1000734-v1
v2	23 MAR 2011	E1100262-v1	E1000734-v2
v3	31 MAY 2011	E1100351-v1	E1000734-v3



12	94035A999 (McM-Carr, special order) or equiv	PRECISION SKT SHLDR SCRW 5/32 O.D., 5/8 L, #6-32 X 3/16 THD	18-8 SSSL	3	1	4
11	70466S (Century Spring) or equiv	COMPRESSION SPRING .210 O.D., .018 W.D., .63 L, 3.4#/IN	302 SSSL	3	1	4
10	D1002465	ALIGO AOS TRANSMON F2 MIRROR CLAMP	6061-T6 Al	3	0	3
9	D1100522	TMS TELESCOPE SECOND FOLD MIRROR	BK7 GLASS	1	0	1
8	9529K44 (McM-Carr) or equiv	440C SS BALL 7/32" DIAMETER, GRADE 24	AISI 440C	3	2	5
7	99934A330 (McM-Carr) or equiv	SKT SET SCRW, 6-32 X 1/8 L, SILVER TIP	18-8 SSSL	3	1	4
6	94355A614 (McM-Carr) or equiv	SKT SET SCRW, FLAT PT, 1/4-28 X 1/2	18-8 SSSL	3	1	4
5	D1002458	ALIGO AOS TRANSMON F2 MIRROR SIDE CLAMP LOWER	6061-T6 Al	2	0	2
4	MS16995-51	SCREW, SOCKET HEAD CAP, 1/4-20 UNC-2A X 0.875 LONG	300 SSSL	6	2	8
3	D1002459	ALIGO AOS TRANSMON F2 MIRROR SIDE CLAMP UPPER	6061-T6 Al	1	0	1
2	96861A600 (McM-Carr) or equiv	VENTED FLAT WASHER .255 ID, .468 OD, .032 TH	18-8 SSSL	6	2	8
1	D1000085	ALIGO F2 MIRROR WEDGE	6061-T6 Al	1	0	1
ITEM NO.	PART NUMBER	DESCRIPTION	Material	QTY.	SPARE QTY.	TOTAL QTY.

NOTES AND TOLERANCES: (UNLESS OTHERWISE SPECIFIED)
 1. INTERPRET DRAWING PER ASME Y14.5-1994.
 2. REMOVE ALL SHARP EDGES, R.02 MIN.
 3. DO NOT SCALE FROM DRAWING.
 4. ALL MACHINING FLUIDS MUST BE FULLY SYNTHETIC, FULLY WATER SOLUBLE AND FREE OF SULFUR, SILICONE, AND CHLORINE.

DIMENSIONS ARE IN INCHES
 TOLERANCES:
 .XX ± .01
 .XXX ± .005
 ANGULAR ± °

MATERIAL N/A FINISH N/A inch

LIGO CALIFORNIA INSTITUTE OF TECHNOLOGY
 MASSACHUSETTS INSTITUTE OF TECHNOLOGY

SYSTEM: ADVANCED LIGO SUB-SYSTEM: AOS

PART NAME: ALIGO F2 MIRROR NEST

DESIGNER: C. CONLEY 17 SEP 2010
 DRAFTER: M. MILLER 28 NOV 2010

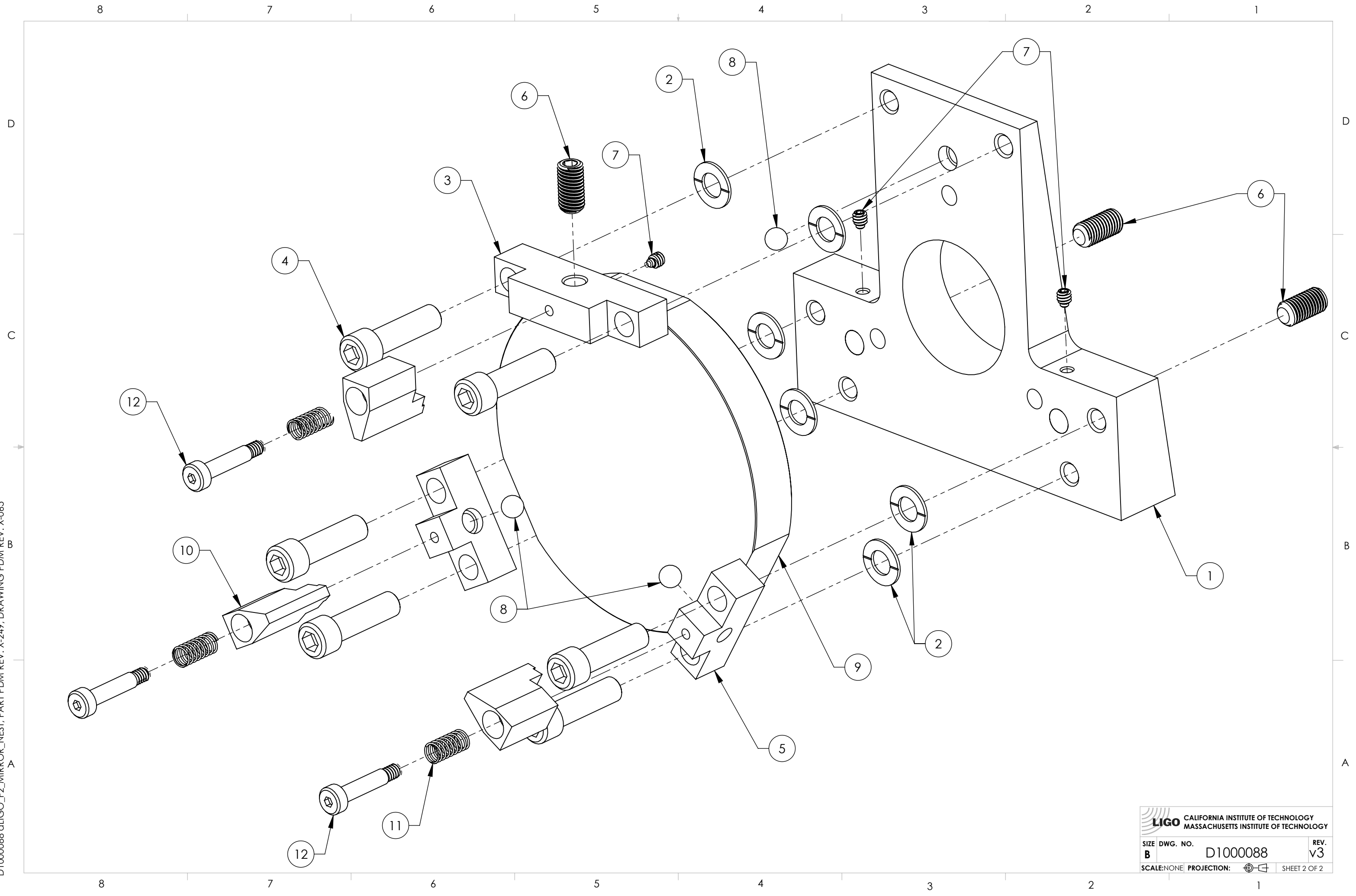
CHECKER: APPROVAL:


SIZE: B DWG. NO.: D1000088 REV.: v3

SCALE: NONE PROJECTION: SHEET 1 OF 2

D1000088 ALIGO_F2_MIRROR_NEST, PART PDM REV: X-249, DRAWING PDM REV: X-065

D1000088 dLIGO_F2_MIRROR_NEST, PART PDM REV: X-249, DRAWING PDM REV: X-065



 CALIFORNIA INSTITUTE OF TECHNOLOGY MASSACHUSETTS INSTITUTE OF TECHNOLOGY	
SIZE DWG. NO.	REV.
B	D1000088 v3
SCALE: NONE PROJECTION:	SHEET 2 OF 2