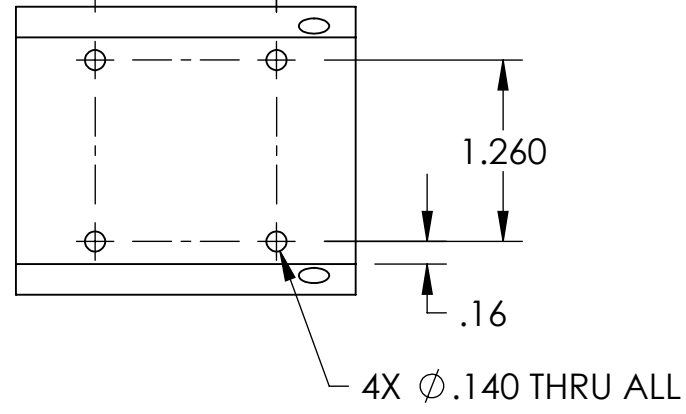
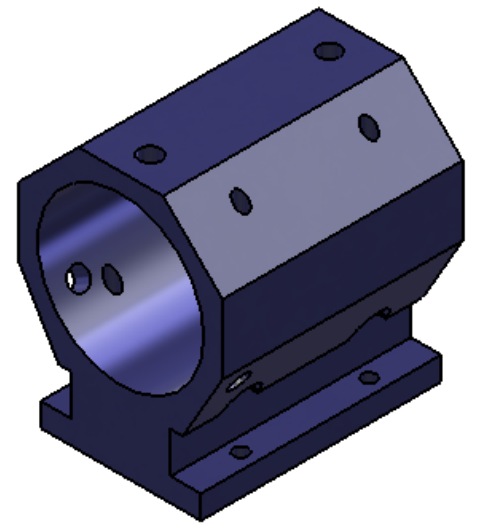
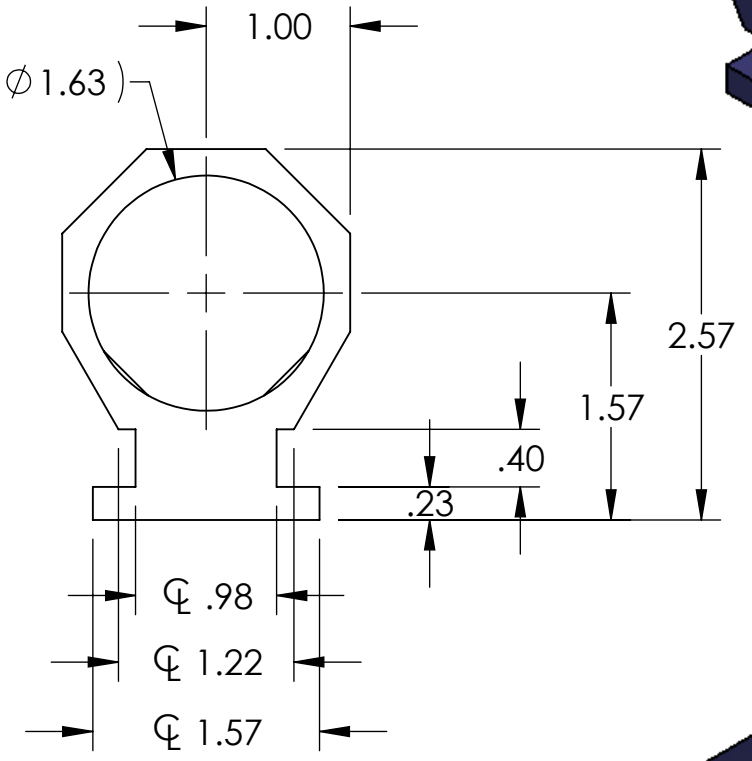
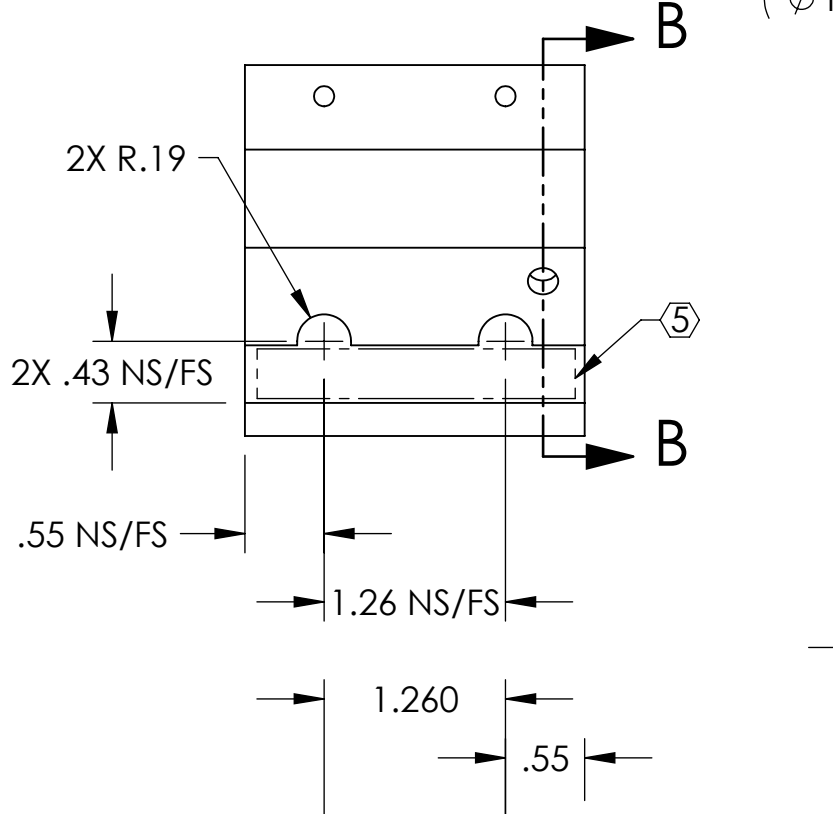
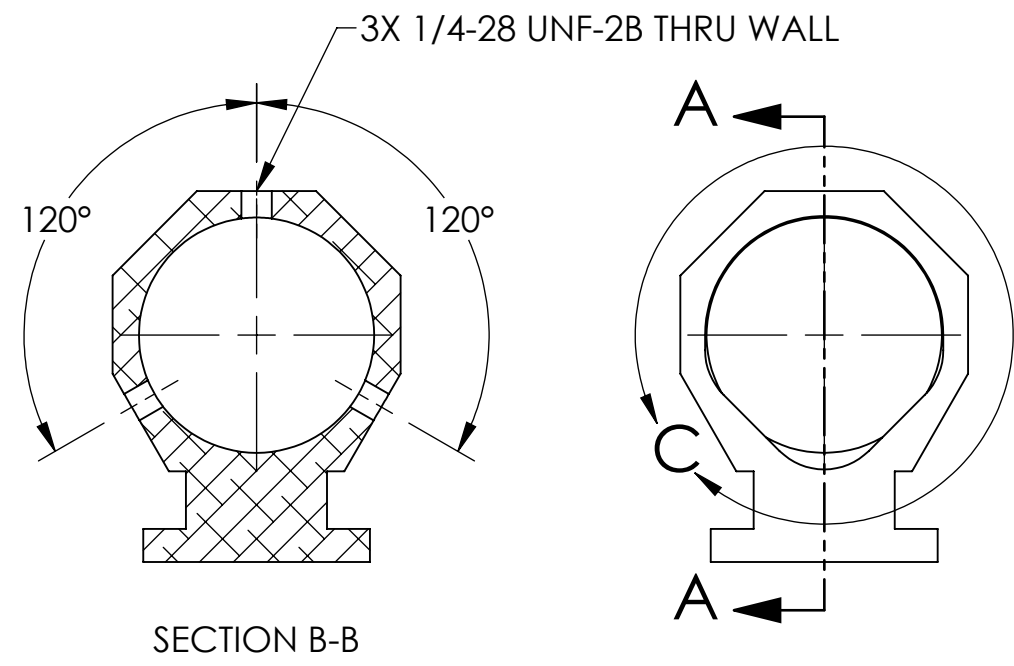
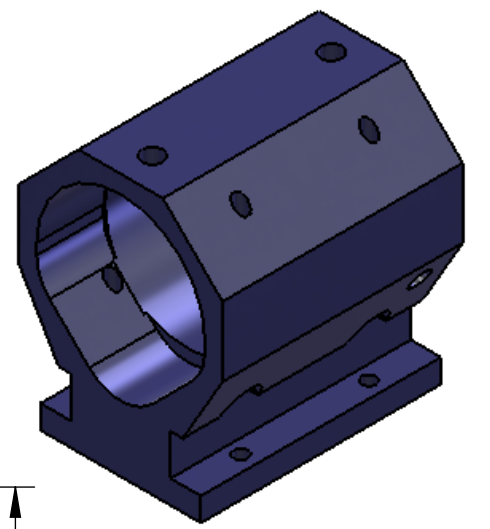
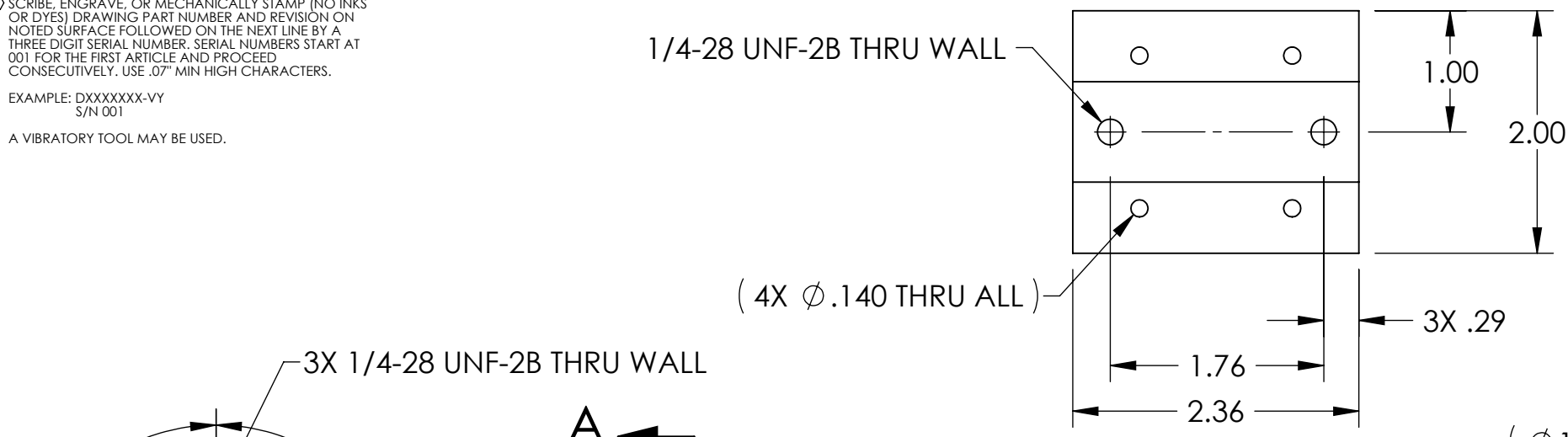


NOTES CONTINUED:
 ⑤ SCRIBE, ENGRAVE, OR MECHANICALLY STAMP (NO INKS OR DYES) DRAWING PART NUMBER AND REVISION ON NOTED SURFACE FOLLOWED ON THE NEXT LINE BY A THREE DIGIT SERIAL NUMBER. SERIAL NUMBERS START AT 001 FOR THE FIRST ARTICLE AND PROCEED CONSECUTIVELY. USE .07" MIN HIGH CHARACTERS.
 EXAMPLE: DXXXXXX-VY
 S/N 001
 A VIBRATORY TOOL MAY BE USED.

REV.	DATE	DCN #	DRAWING TREE #
v1	27 JAN 2010	E1000017-v1	-
-	-	-	-
-	-	-	-



NOTES AND TOLERANCES: (UNLESS OTHERWISE SPECIFIED)

- INTERPRET DRAWING PER ASME Y14.5-1994.
- REMOVE ALL SHARP EDGES, R.02 MIN.
- DO NOT SCALE FROM DRAWING.
- ALL MACHINING FLUIDS SHALL BE WATER SOLUBLE AND FREE OF SULFUR, CHLORINE AND SILICONE, SUCH AS CINCINNATI MILACRON'S CIMTECH 410.

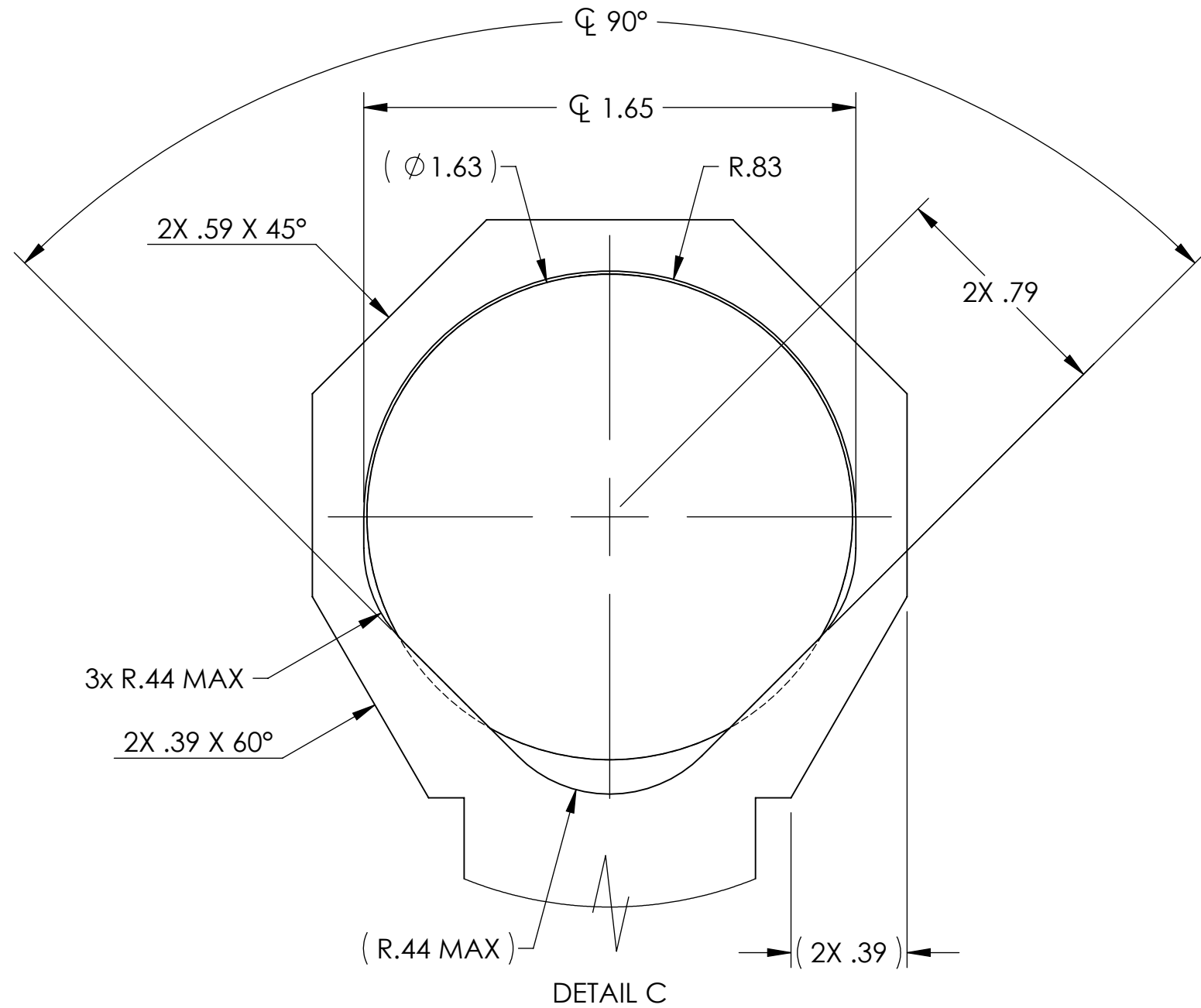
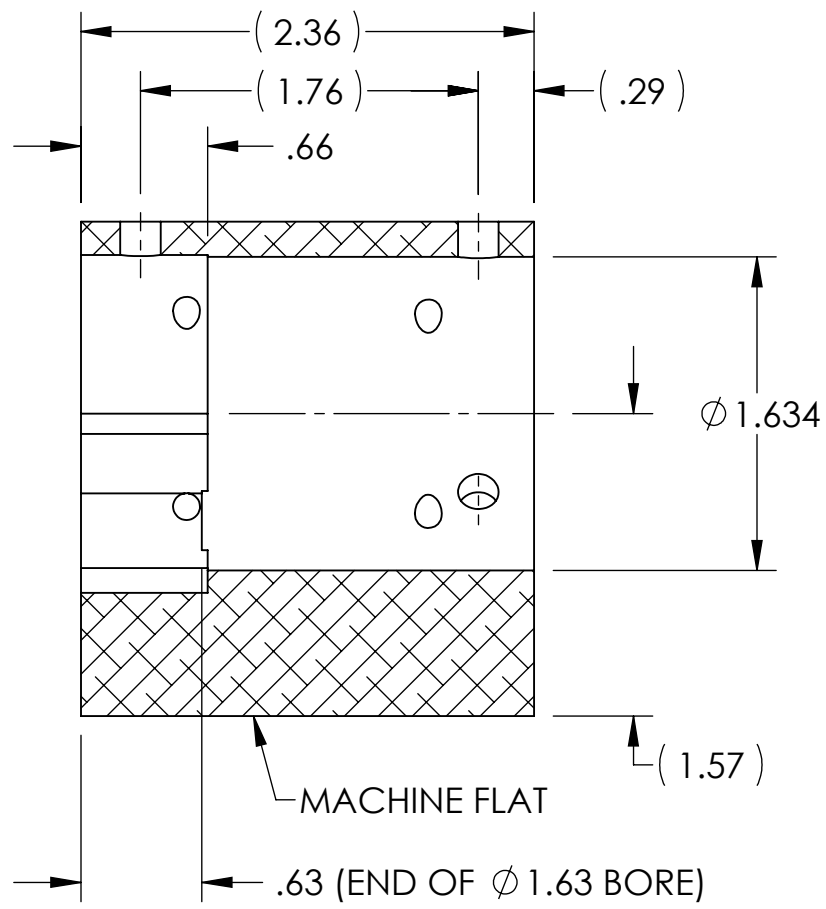
DIMENSIONS ARE IN INCHES
 TOLERANCES:
 .XX ± .01
 .XXX ± .005
 ANGULAR ± 1.0°

MATERIAL	6061-T6	FINISH	N/A μinch
-----------------	---------	---------------	-----------

SYSTEM		SUB-SYSTEM		PART NAME	
ADVANCED LIGO		AOS		ALIGO AOS OPLEV SMALL TELESCOPE MOUNT	
DESIGNER	C. CONLEY	DATE	22 JAN 2010	SIZE	DWG. NO.
DRAFTER	C. CONLEY	DATE	27 JAN 2010	B	D1000115
CHECKER				REV.	v1
APPROVAL				SCALE	NONE
				PROJECTION	ASME
					SHEET 1 OF 2

D1000115 alIGO AOS Oplev Small Telescope Mount, PART PDM REV: X-01.5, DRAWING PDM REV: X-006

D1000115 AOS Oplev Small Telescope Mount, PART PDM REV: X-01.5, DRAWING PDM REV: X-006



LIGO CALIFORNIA INSTITUTE OF TECHNOLOGY
MASSACHUSETTS INSTITUTE OF TECHNOLOGY

SIZE	DWG. NO.	REV.
B	D1000115	v1
SCALE: NONE		PROJECTION:
		SHEET 2 OF 2