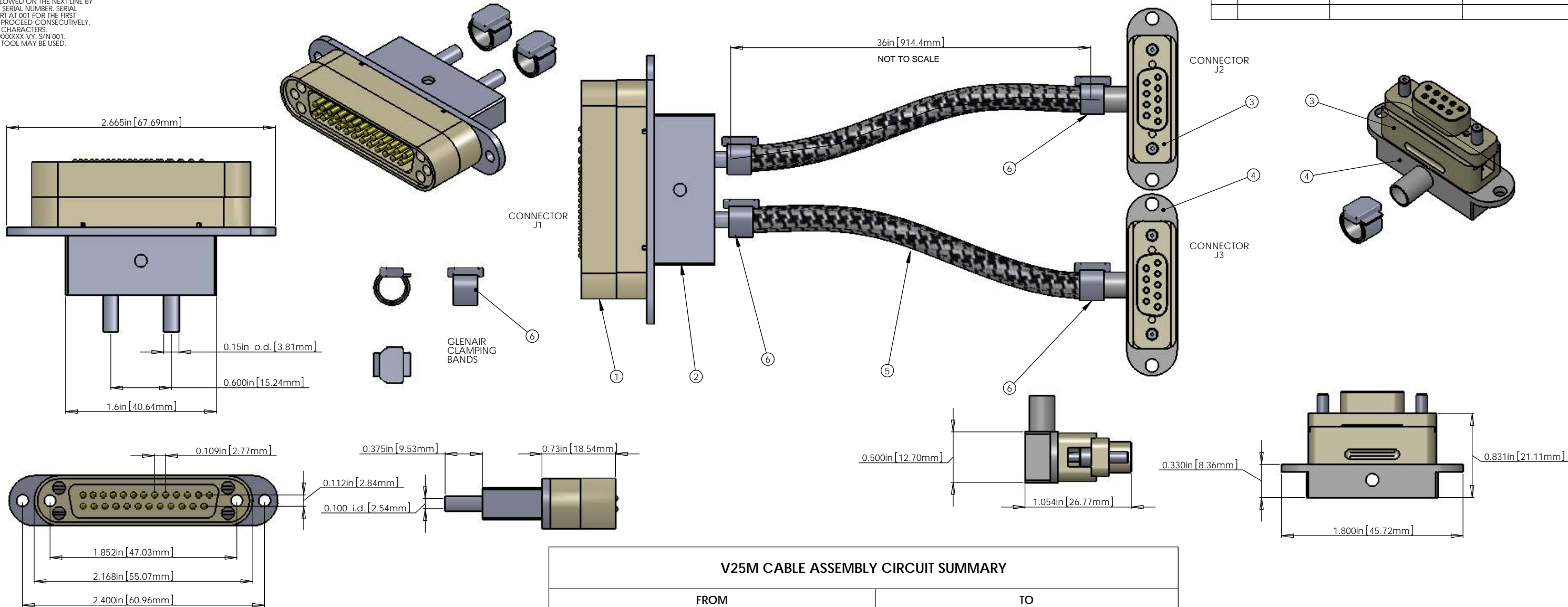


NOTES CONTINUED:
 5. SCRIBE, ENGRAVE, OR MECHANICALLY STAMP (NO INKS OR DYES) DRAWING PART NUMBER AND REVISION ON NOTED SURFACE FOLLOWED ON THE NEXT LINE BY A THREE DIGIT SERIAL NUMBER. SERIAL NUMBERS START AT 001 FOR THE FIRST ARTICLE AND PROCEED CONSECUTIVELY. USE 07 HIGH CHARACTERS. EXAMPLE: DXXXXXX-VV, S/N 001. A VIBRATORY TOOL MAY BE USED.

REV.	DATE	DCN #	DRAWING TREE #



V25M CABLE ASSEMBLY CIRCUIT SUMMARY

FROM					TO		
CONNECTOR J1 - 25 PIN SUBMINI_D MALE CONNECTOR (PEEK)					CONNECTOR J2 - 9 PIN SUBMINI_D FEMALE CONNECTOR (PEEK)		
PIN	WIRE NAME	COLOR	LENGTH	TWISTED PAIR	Pin	Wire Name	SIGNAL
1,9,SHELL	SHIELD (BRAID)		36in.		5, SHELL	SHIELD (BRAID)	SHIELD
1,9,SHELL	(CABLE 1) WIRE 1	White	36in.		5, SHELL	(CABLE 1) WIRE 1	SHIELD
2	(CABLE 1) WIRE 2	White	36in.	TP-1	4	(CABLE 1) WIRE 2	POWER -
14	(CABLE 1) WIRE 14	White	36in.	TP-1	9	(CABLE 1) WIRE 14	POWER - RTN
3	(CABLE 1) WIRE 3	White	36in.	TP-2	3	(CABLE 1) WIRE 3	POWER +
15	(CABLE 1) WIRE 15	White	36in.	TP-2	8	(CABLE 1) WIRE 15	POWER + RTN
4	(CABLE 1) WIRE 4	White	36in.	TP-3	2	(CABLE 1) WIRE 4	LOCK +
16	(CABLE 1) WIRE 16	White	36in.	TP-3	7	(CABLE 1) WIRE 16	LOCK -
5	(CABLE 1) WIRE 5	White	36in.	TP-4	1	(CABLE 1) WIRE 5	SIG +
17	(CABLE 1) WIRE 17	White	36in.	TP-4	6	(CABLE 1) WIRE 17	SIG -
					CONNECTOR J3 - 9 PIN SUBMINI_D FEMALE CONNECTOR (PEEK)		
					Pin	Wire Name	SIGNAL
9,1,SHELL	SHIELD (BRAID)		36in.		5, SHELL	SHIELD (BRAID)	SHIELD
9,1,SHELL	(CABLE 2) WIRE 9	White	36in.		5, SHELL	(CABLE 2) WIRE 9	SHIELD
10	(CABLE 2) WIRE 10	White	36in.	TP-5	4	(CABLE 2) WIRE 10	POWER -
22	(CABLE 2) WIRE 22	White	36in.	TP-5	9	(CABLE 2) WIRE 22	POWER - RTN
11	(CABLE 2) WIRE 11	White	36in.	TP-6	3	(CABLE 2) WIRE 11	POWER +
23	(CABLE 2) WIRE 23	White	36in.	TP-6	8	(CABLE 2) WIRE 23	POWER + RTN
12	(CABLE 2) WIRE 12	White	36in.	TP-7	2	(CABLE 2) WIRE 12	LOCK+
24	(CABLE 2) WIRE 24	White	36in.	TP-7	7	(CABLE 2) WIRE 24	LOCK -
13	(CABLE 2) WIRE 13	White	36in.	TP-8	1	(CABLE 2) WIRE 13	SIG +
25	(CABLE 2) WIRE 25	White	36in.	TP-8	6	(CABLE 2) WIRE 25	SIG -

BOM Table				
ITEM NO.	PART NUMBER	DESCRIPTION	QTY.	Length
2	CUSTOM BACKSHELL	DB25 CONNECTOR BACKSHELL FOR UHV (STAINLESS)	1	
3	CUSTOM DB25 MALE	DB25 MALE CONNECTOR (J1) FOR UHV (PEEK)	1	
3	CUSTOM DB9 FEMALE	DB9 FEMALE CONNECTOR (J2,J3) FOR UHV (PEEK)	2	
4	CUSTOM BACKSHELL	DB9 CONNECTOR BACKSHELL FOR UHV (STAINLESS)	2	
5	C1	9 COND. (4 TW PAIR + 1 WIRE + SHIELD) CABLE WITH COPPER BRAID (SHIELD) AND PEEK OVERBRAID	2	36IN.
6	GLENAIR 600-052	GLENAIR 600-052 STANDARD BRAID CLAMP	4	
7		#4-40 UNC ALLEN HEAD MACHINE SCREW	2	
8		#2-56 ALLEN HEAD MAXHINE SCREW	4	

NOTES: (UNLESS OTHERWISE SPECIFIED)

- MATERIAL:**
 - CONNECTOR SHELL - PEEK VICTREX GRADE TDS-450G.
 - BACKSHELL - STAINLESS STEEL WITH VENT HOLE.
 - CONTACTS - BERYLLIUM COPPER ALLOW C17300 0.000050 MIN. GOLD OVER NICKEL
 - HARDWARE: CORROSION RESISTANCE STEEL, PASSIVATED
 - PEEK BRAID - PEEK VICTREX GRADE TDS-450CA30 CARBON FIBRE LOADED
- CABLE** 9 COND. 28 AWG, (40 STRD 44 AWG) WITH 2 LAYERS OF KAPTON TAPE 4 TWISTED PAIRS (4 TO 5 TWISTS PER INCH) + 1 WIRE OVERALL 40AWG SILVER PLATED COPPER BRAID 90% COVERAGE OVERALL PEEK BRAID MIN. 50% COVERAGE OVERALL CABLE O.D. WILL BE APPROX. 0.240 IN.

DIMENSIONS ARE IN		TOLERANCES:		ANGULAR ± °	
XX ±		XX ±		XXX ±	
Material <not specified>		FINISH μinch		NEXT ASSY	

NOTES AND TOLERANCES: (UNLESS OTHERWISE SPECIFIED)		LIGO CALIFORNIA INSTITUTE OF TECHNOLOGY MASSACHUSETTS INSTITUTE OF TECHNOLOGY	
1. INTERPRET DRAWING PER ASME Y14.5-1994.		SYSTEM	
2. REMOVE ALL SHARP EDGES, R.02 MIN.		SUB-SYSTEM SEI	
3. DO NOT SCALE FROM DRAWING.			
4. ALL MACHINING FLUIDS MUST BE FULLY SYNTHETIC, FULLY WATER SOLUBLE AND FREE OF SULFUR, SILICONE, AND CHLORINE.			

PART NAME				CUSTOM CABLE SPECIFICATION V25M	
DESIGNER	E. BROWN	DATE	FEB/01/2010	SIZE	DWG. NO.
DRAFTER		CHECKER		D	D1000227-v1
APPROVAL		CHECKER		SCALE: 2:1	PROJECTION:
				SHEET 1 OF 1	