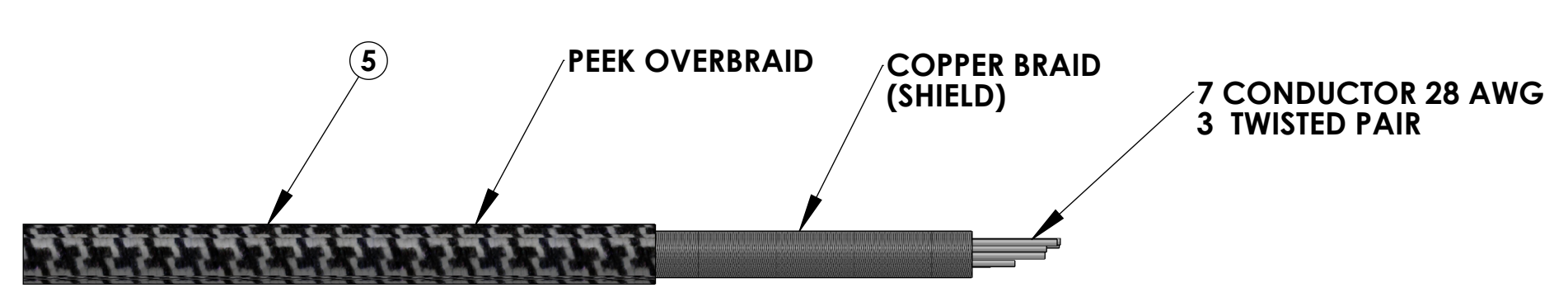
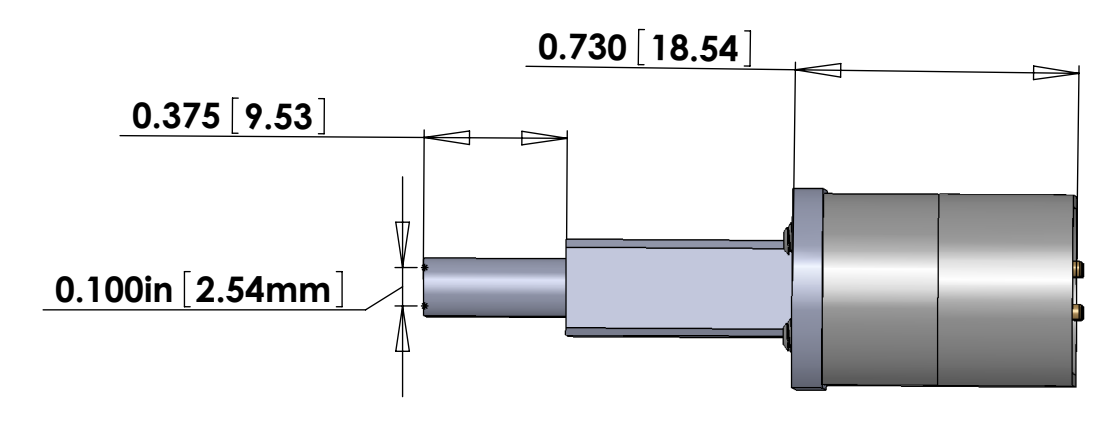
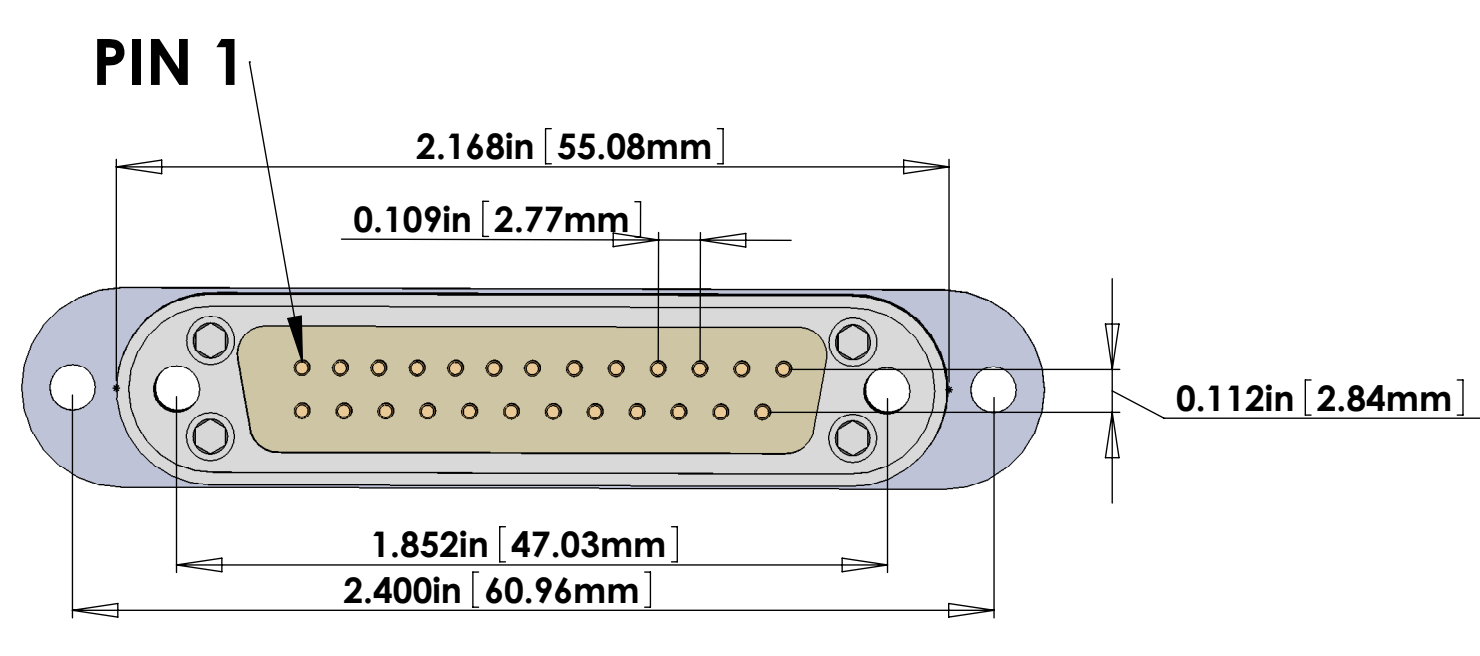
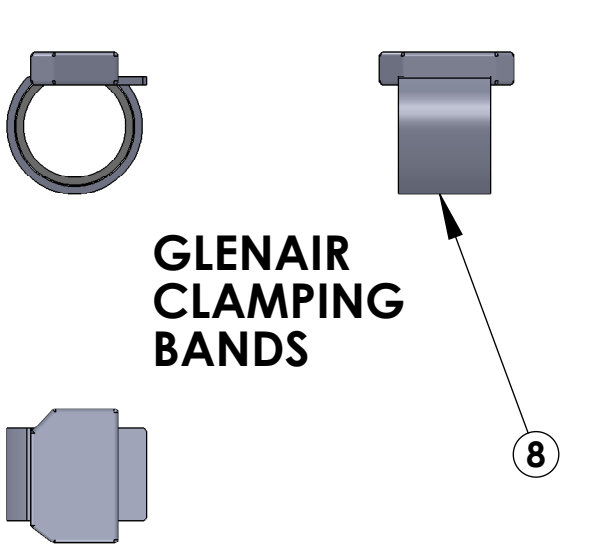
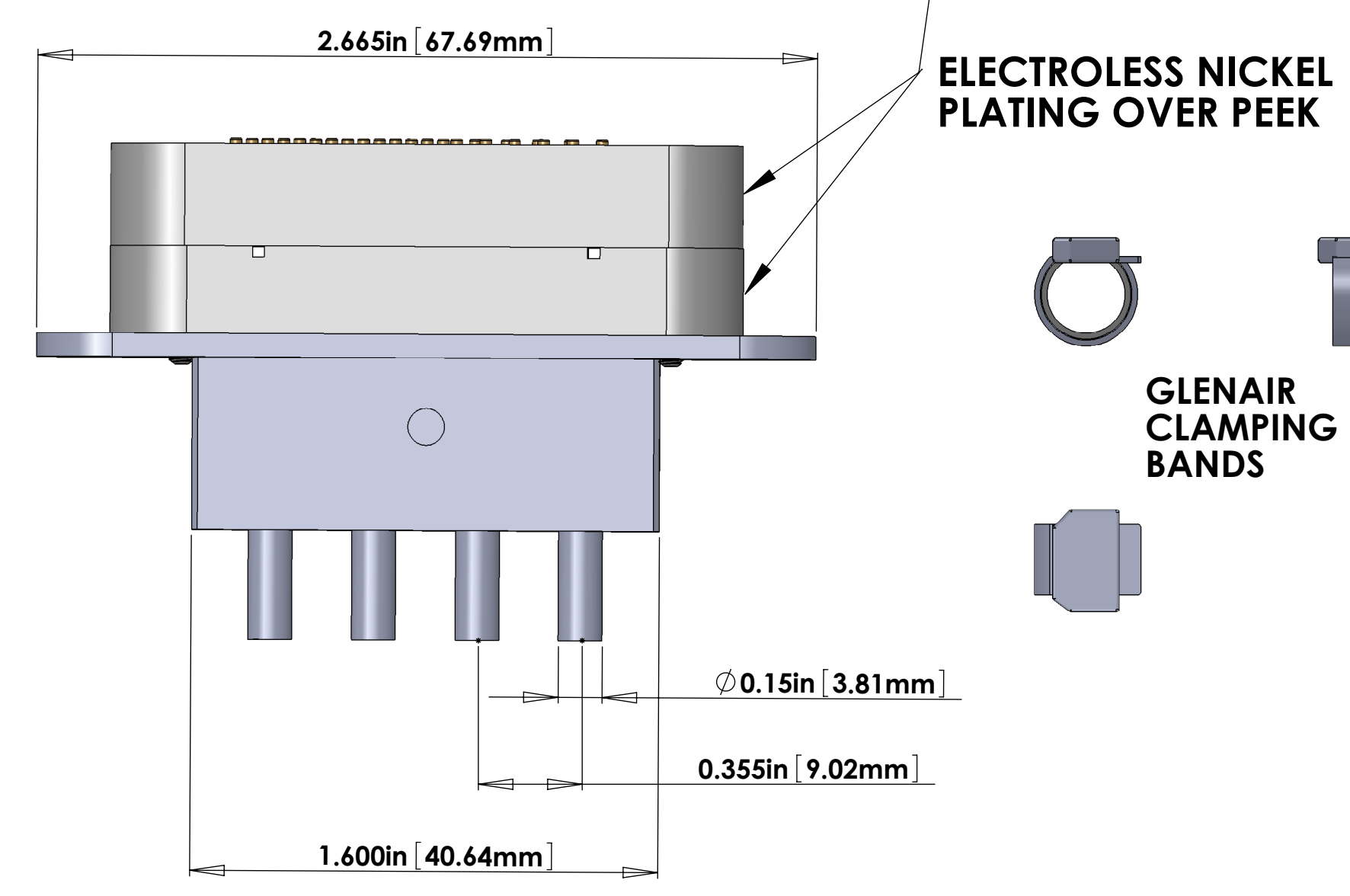
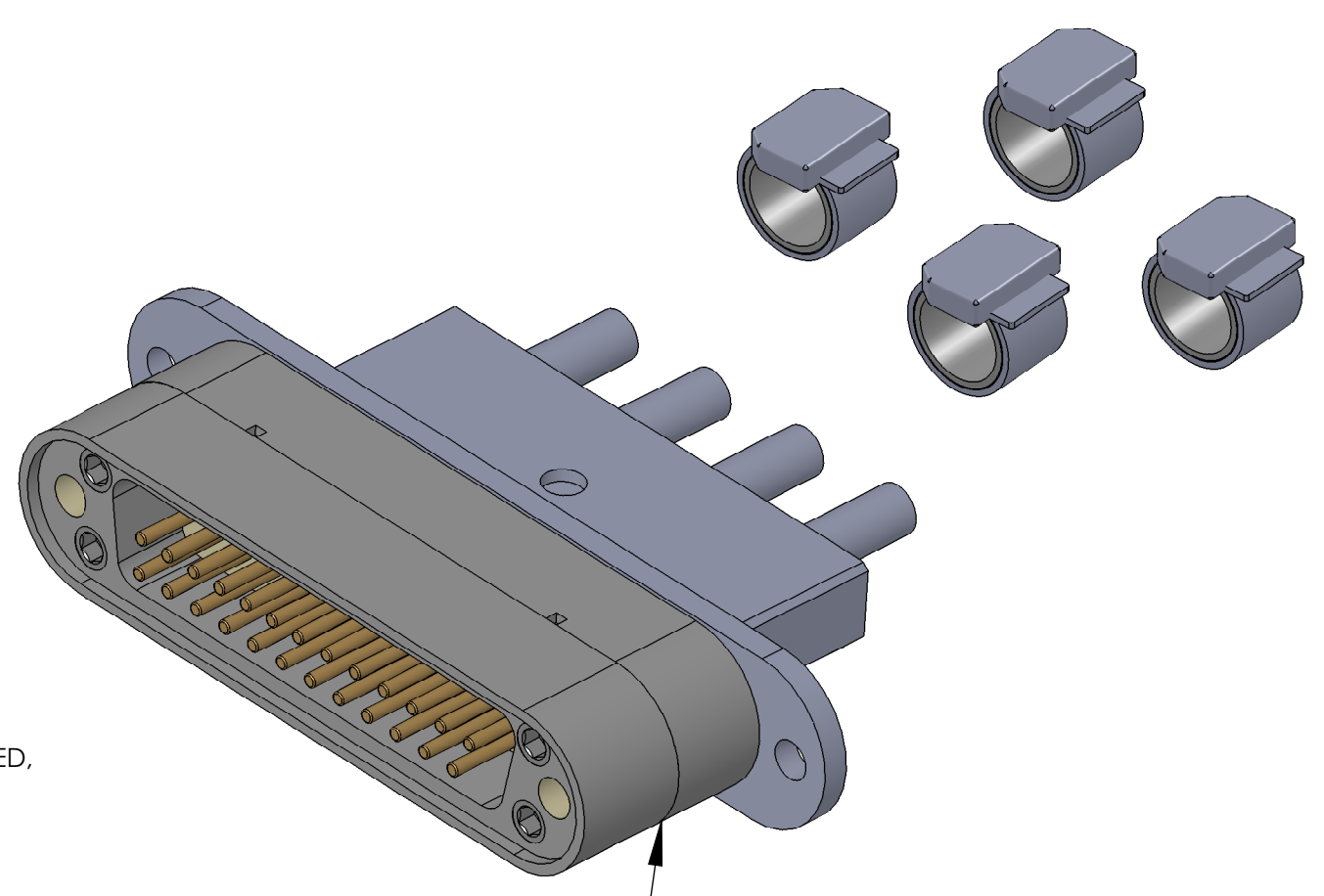


- NOTES CONTINUED:
- SCRIBE, ENGRAVE, OR MECHANICALLY STAMP (NO INKS OR DYES) DRAWING PART NUMBER AND REVISION ON NOTED SURFACE FOLLOWED ON THE NEXT LINE BY A THREE DIGIT SERIAL NUMBER. SERIAL NUMBERS START AT 001 FOR THE FIRST ARTICLE AND PROCEED CONSECUTIVELY. USE '07' HIGH CHARACTER. EXAMPLE: DXXXXXX-VY, 5/N 001. VIBRATORY TOOL MAY BE USED.
 - APPROXIMATE WEIGHT = X.XXXX LB.
 - MACHINE ALL SURFACES TO REMOVE OXIDES AND MILL FINISH. USE OF ABRASIVE REMOVAL TECHNIQUES IS NOT ALLOWED. REFER TO LIGO-ED900364.
 - ALL PARTS SHALL BE MANUFACTURED IN ACCORDANCE WITH LIGO SPECIFICATION ED900364.
 - ALL HELI-COIL HOLES TO BE PREPARED ACCORDING TO EMHART HELI-COIL PRODUCT CATALOG, HC2000, REV. 4.
 - ALL HELI-COIL INSERTS TO BE INSTALLED BY LIGO PERSONNEL AFTER DELIVERY OF FINISHED PARTS. USE NITRONIC 60 THREADED INSERTS.
 - ALL MATERIAL IS TO BE VIRGIN MATERIAL (I.E. NO WELD REPAIRS, PLUGS OR RECYCLED MATERIAL). NO REPAIRS SHALL BE MADE UNLESS APPROVED IN ADVANCE. AND IN WRITING, BY LIGO LABORATORY. REFER TO LIGO-ED900364.
 - SURFACE FINISH TO BE AS-PROCESSED FROM MILL/SUPPLIER, FREE FROM SCRATCHES OR GOUGES.
 - PART WILL BE PORCELAIN COATED PER LIGO SPECIFICATION E100083 AFTER FABRICATION. THE INDICATED HOLES WILL BE MASKED PRIOR TO PORCELAIN COATING TO APPROXIMATELY 2.5-3X HOLE DIAMETER CENTERED ON BOTH SIDES OF THE HOLE.
 - DIMENSIONS APPLY BEFORE PORCELAIN COATING UNLESS SPECIFIED.
 - BEND RADIUS: UNLESS OTHERWISE NOTED, THE BEND RADIUS SHOULD BE THE MINIMUM REQUIRED TO FORM WITHOUT CRACKING OR REQUIRING ADDITIONAL WORK WHEN FORMING. IN PARTICULAR IF SHEET METAL IS TO BE PORCELAIN COATED, THE BEND RADIUS SHALL BE A MINIMUM OF .12" OUTSIDE RADIUS OF BEND UNLESS OTHERWISE NOTED.



V25X-TBD CABLE ASSEMBLY CIRCUIT SUMMARY

V-DB25 M/1-TBD-4_μD9 F/5

FROM

CONNECTOR J1 - 25 PIN MALE SUBMINI_D CONNECTOR (PEEK)

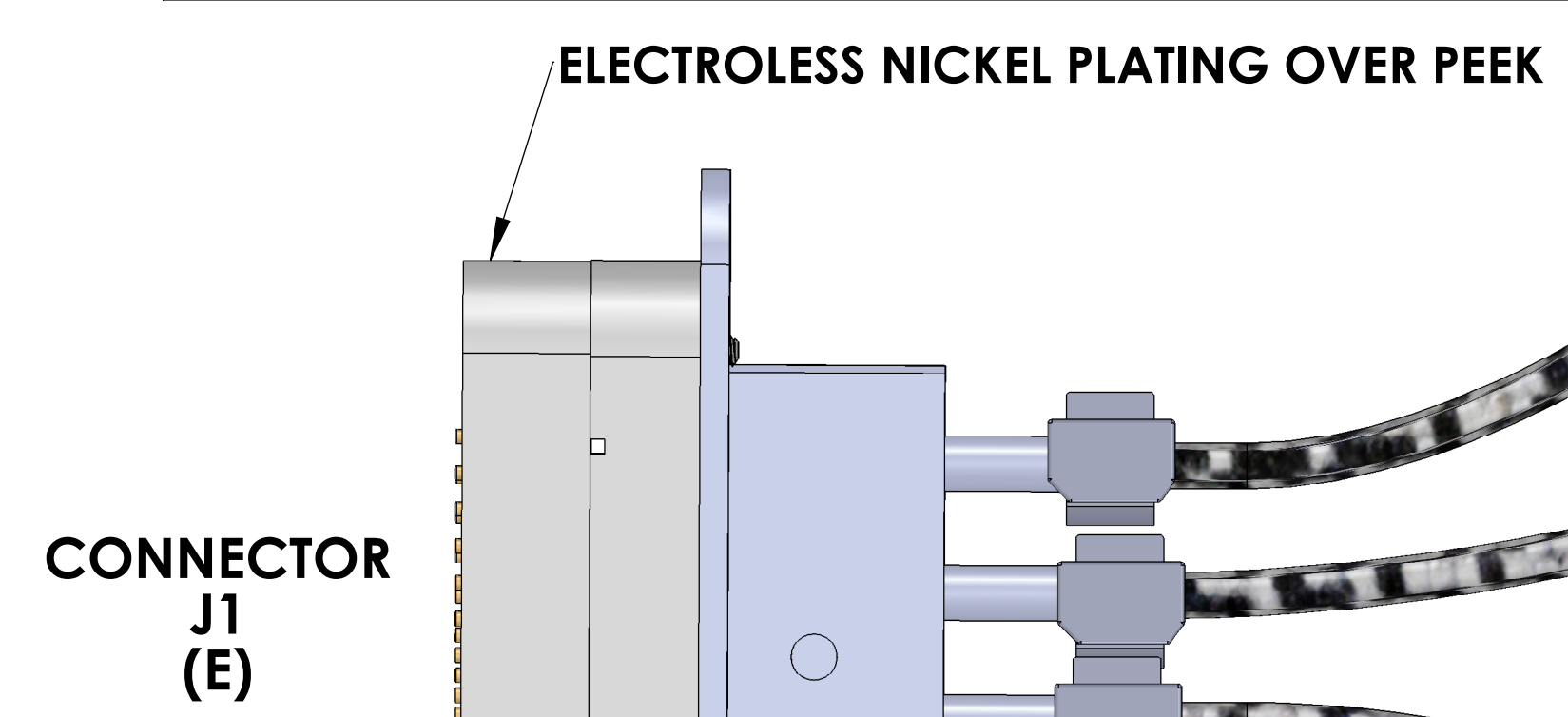
PIN	WIRE NAME	COLOR	LENGTH	TWISTED PAIR
N/C	(CONNECTOR SHELL)			
E1	(CABLE 1) WIRE 1	White	TBD in. *	(CABLE 1) SHIELD
E14	(CABLE 1) WIRE 14	White	TBD in. *	SINGLE WIRE
E2	(CABLE 1) WIRE 2	White	TBD in. *	TP-1A
E15	(CABLE 1) WIRE 15	White	TBD in. *	TP-2A
E3	(CABLE 1) WIRE 3	White	TBD in. *	TP-2A
E16	(CABLE 1) WIRE 16	White	TBD in. *	TP-3A
E4	(CABLE 1) WIRE 4	White	TBD in. *	TP-3A
E17	(CABLE 2) WIRE 17	White	TBD in. *	(CABLE 2) SHIELD
E5	(CABLE 2) WIRE 5	White	TBD in. *	TP-1B
E18	(CABLE 2) WIRE 18	White	TBD in. *	TP-2B
E6	(CABLE 2) WIRE 6	White	TBD in. *	TP-2B
E19	(CABLE 2) WIRE 19	White	TBD in. *	TP-3B
E7	(CABLE 2) WIRE 7	White	TBD in. *	TP-3B
E20	(CABLE 3) WIRE 20	White	TBD in. *	(CABLE 3) SHIELD
E8	(CABLE 3) WIRE 8	White	TBD in. *	TP-1C
E21	(CABLE 3) WIRE 21	White	TBD in. *	TP-2C
E9	(CABLE 3) WIRE 9	White	TBD in. *	TP-2C
E22	(CABLE 3) WIRE 22	White	TBD in. *	TP-3C
E10	(CABLE 3) WIRE 10	White	TBD in. *	TP-3C
E23	(CABLE 4) WIRE 23	White	TBD in. *	(CABLE 4) SHIELD
E11	(CABLE 4) WIRE 11	White	TBD in. *	TP-1D
E24	(CABLE 4) WIRE 24	White	TBD in. *	TP-2D
E12	(CABLE 4) WIRE 12	White	TBD in. *	TP-2D
E25	(CABLE 4) WIRE 25	White	TBD in. *	TP-3D
E13	(CABLE 4) WIRE 13	White	TBD in. *	TP-3D

TBD in. * = LENGTH TO BE DETERMINED AT TIME OF ORDER (SEE STANDARD CABLE LENGTH CHART)

STANDARD CABLE LENGTH CHART

DESIGNATOR	INCHES	FEET and INCHES
V25X-53	53	4 ft. 5 in.
V25X-60	60	5 ft.
V25X-66	66	5 ft. 6 in.
V25X-78	78	6 ft. 6 in.
V25X-88	88	7 ft. 4 in.
V25X-96	96	8 ft.
V25X-125	125	10 ft. 5 in.

V25X-TBD
TBD * ADDITIONAL CUSTOM LENGTHS
* LENGTH To Be Determined AT TIME OF ORDER



CONNECTOR J1 (E)

CONNECTOR J2 (A)

CONNECTOR J3 (B)

CONNECTOR J4 (C)

CONNECTOR J5 (D)

NOT TO SCALE

VARIOUS LENGTHS see STANDARD CABLE LENGTH CHART

V25X CABLE ASSEMBLY CIRCUIT SUMMARY

TO

CONNECTOR J2 - 9 PIN FEMALE MICRO_D CONNECTOR (PEEK)

PIN	WIRE NAME	SIGNAL
N/C	(CABLE 1) SHIELD	SHIELD
A5	(CABLE 1) WIRE 1	SHIELD
A1	(CABLE 1) WIRE 14	PD1-K
A6	(CABLE 1) WIRE 2	PD1-A
A2	(CABLE 1) WIRE 15	LED1-A
A7	(CABLE 1) WIRE 3	LED1-K
A4	(CABLE 1) WIRE 16	COIL1-FN
A9	(CABLE 1) WIRE 4	COIL1-ST

V25X CABLE ASSEMBLY CIRCUIT SUMMARY

TO

CONNECTOR J3 - 9 PIN FEMALE MICRO_D CONNECTOR (PEEK)

PIN	WIRE NAME	SIGNAL
N/C	(CABLE 2) SHIELD	SHIELD
B5	(CABLE 2) WIRE 1	SHIELD
B1	(CABLE 2) WIRE 17	PD2-K
B6	(CABLE 2) WIRE 5	PD2-A
B2	(CABLE 2) WIRE 18	LED2-A
B7	(CABLE 2) WIRE 6	LED2-K
B4	(CABLE 2) WIRE 19	COIL2-FN
B9	(CABLE 2) WIRE 7	COIL2-ST

V25X CABLE ASSEMBLY CIRCUIT SUMMARY

TO

CONNECTOR J4 - 9 PIN FEMALE MICRO_D CONNECTOR (PEEK)

PIN	WIRE NAME	SIGNAL
N/C	(CABLE 3) SHIELD	SHIELD
C5	(CABLE 3) WIRE 1	SHIELD
C1	(CABLE 3) WIRE 20	PD3-K
C6	(CABLE 3) WIRE 8	PD3-A
C2	(CABLE 3) WIRE 21	LED3-A
C7	(CABLE 3) WIRE 9	LED3-K
C4	(CABLE 3) WIRE 22	COIL3-FN
C9	(CABLE 3) WIRE 10	COIL3-ST

V25X CABLE ASSEMBLY CIRCUIT SUMMARY

TO

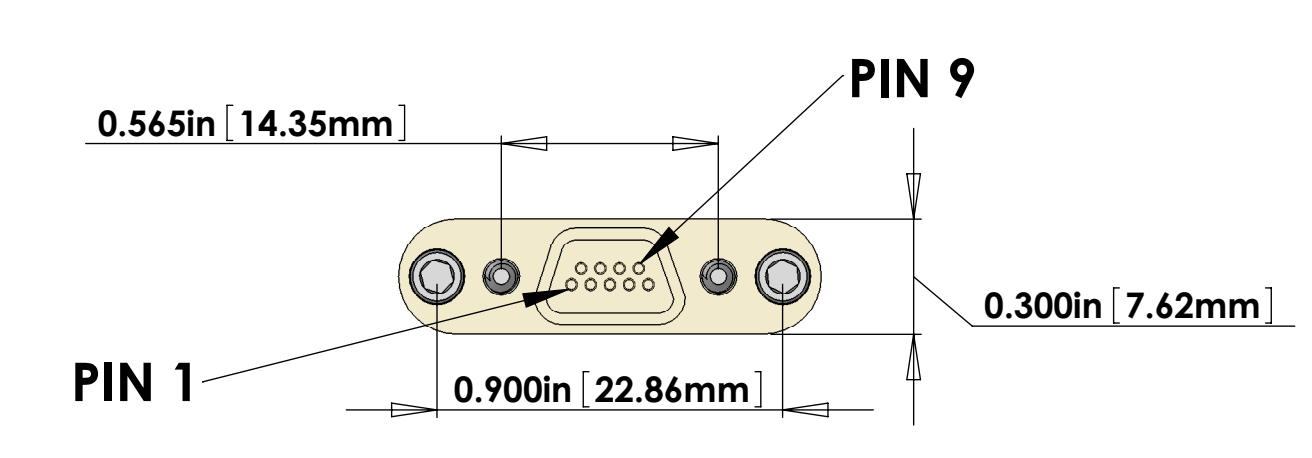
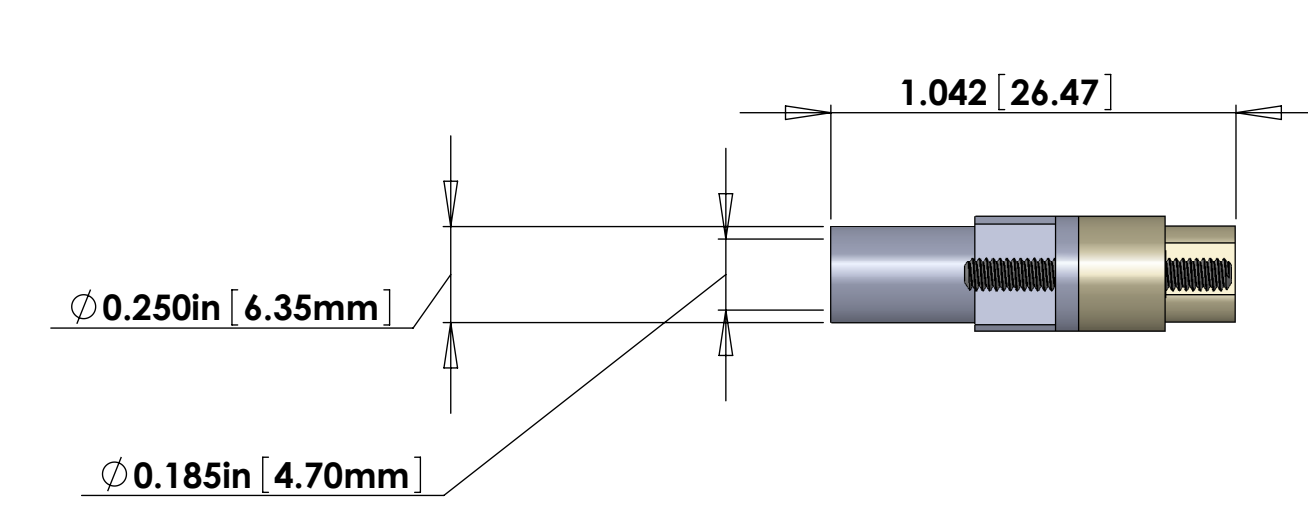
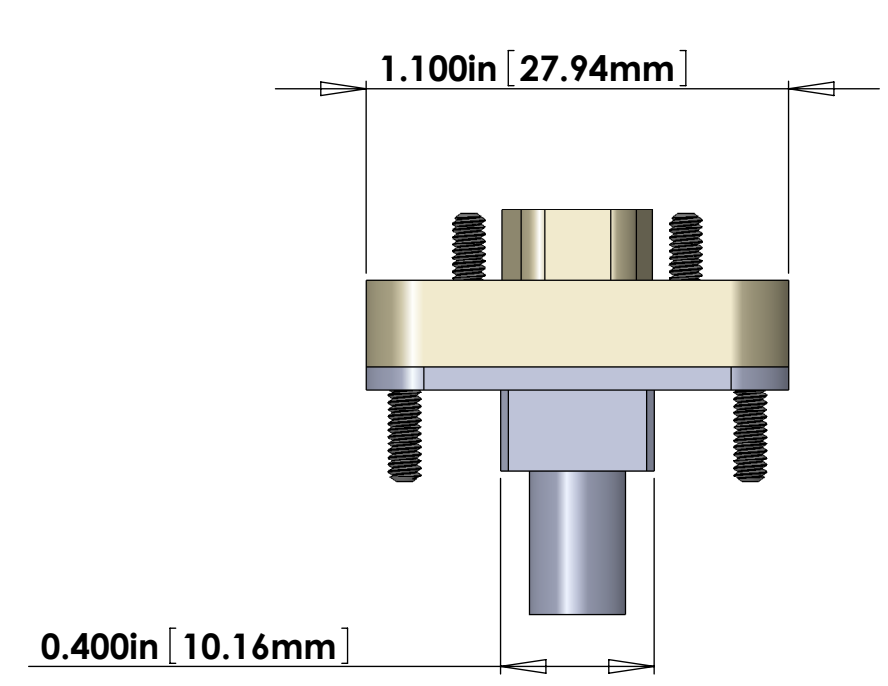
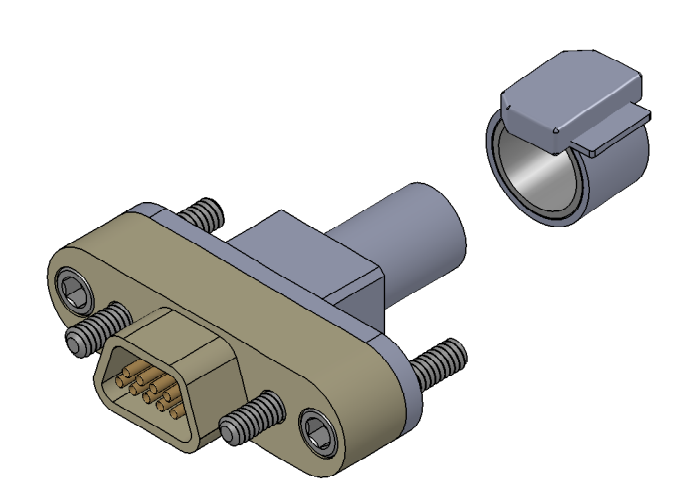
CONNECTOR J5 - 9 PIN FEMALE MICRO_D CONNECTOR (PEEK)

PIN	WIRE NAME	SIGNAL
N/C	(CABLE 4) SHIELD	SHIELD
D5	(CABLE 4) WIRE 1	SHIELD
D1	(CABLE 4) WIRE 23	PD4-K
D6	(CABLE 4) WIRE 11	PD4-A
D2	(CABLE 4) WIRE 24	LED4-A
D7	(CABLE 4) WIRE 12	LED2-K
D4	(CABLE 4) WIRE 25	COIL4-FN
D9	(CABLE 4) WIRE 13	COIL4-ST

BILL OF MATERIALS

ITEM NO.	PART NUMBER	DESCRIPTION	QTY.	LENGTH
1	TICOR #TS0125-3	DB25 MALE CONNECTOR (J1) FOR UHV (PEEK)	1	
2		DB25 CONNECTOR BACKSHELL FOR UHV (STAINLESS)		
3	TICOR #TS0094	DB9 (DE9) FEMALE CONNECTOR (J2,J3,J4,J5) FOR UHV (PEEK)	4	
4		DB9 CONNECTOR BACKSHELL FOR UHV (STAINLESS)		
5	C1	7 COND. (3 TWISTED PAIR) CABLE (ADD COPPER BRAID (SHIELD) 6. AND PEEK OVERBRAID) 7.	4	VARIOUS LENGTHS* see STANDARD CABLE LENGTH CHART
6	CONTINENTAL PART #24x3x40BC	COPPER BRAID - CONTINENTAL CORDAGE PART #24x3x40BC	4	
7	PART #6759	PEEK BRAID - PART #6759 MANUFACTURED WITH ZEUS 0.016" BLACK PEEK DRAWN MONOFILAMENT	4	
8	GLENAIR 600-052	GLENAIR 600-052 STANDARD BRAID CLAMP	8	

* NOTE: THE OVERALL LENGTH IS MEASURED FROM BACKSHELL (25 PIN) TO BACKSHELL (9 PIN) OF THE CABLE. Use whatever length is necessary for the internal wiring of the connectors and strip length to achieve the correct overall length.



NOTES: (UNLESS OTHERWISE SPECIFIED)

- MATERIAL: a. CONNECTOR SHELL - PEEK - VICTREX 450G130. b. BACKSHELL - STAINLESS STEEL WITH VENT HOLE. c. CONTACTS - BERYLLIUM COPPER ALLOY C17300 0.000050 MIN. GOLD OVER NICKEL. d. HARDWARE - CORROSION RESISTANCE STEEL, PASSIVATED. e. PEEK BRAID - PEEK CARBON LOADED - BLACK DRAWN MONOFILAMENT.
- CABLE 7 COND. 28 AWG, (65 STRD 46 AWG) WITH PFA INSULATION COONER WIRE #CZ2205 3 TWISTED PAIRS (4 TO 5 TWISTS PER INCH) OVERALL 40AWG COPPER BRAID 90% COVERAGE OVERALL PEEK BRAID MIN. 50% COVERAGE OVERALL CABLE O.D. WILL BE APPROX. 0.240 IN.

DIMENSIONS ARE IN		NOTES AND TOLERANCES: (UNLESS OTHERWISE SPECIFIED)		CALIFORNIA INSTITUTE OF TECHNOLOGY MASSACHUSETTS INSTITUTE OF TECHNOLOGY		PART NAME	
TOLERANCES:		1. INTERPRET DRAWING PER ASME Y14.5-1994. 2. REMOVE ALL SHARP EDGES, .005-.015, FOR MACHINED PARTS. ROUND ALL EDGES APPROXIMATELY R.02 FOR SHEET METAL PARTS. 3. DO NOT SCALE FROM DRAWING. 4. ALL MACHINING FLUIDS MUST BE FULLY SYNTHETIC, FULLY WATER SOLUBLE AND FREE OF SULFUR, SILICONE, AND CHLORINE.		LIGO		CUSTOM CABLE SPECIFICATION V25X-TBD	
ANGULAR ± °		MATERIAL		SUB-SYSTEM		DESIGNER	
		Material <not specified>		SUS		R. ABBOTT	
		FINISH		DRAWER		E. BROWN	
		μinch		CHECKER			
		NEXT ASSY		APPROVAL			
				SCALE: 2:1		PROJECTION:	
						DWG. NO. D1000234	
						REV. v4	
						SHEET 1 OF 1	