

NOTES CONTINUED:

5 SCRIBE, ENGRAVE (A VIBRATORY TOOL MAY BE USED), LASER MARK OR MECHANICALLY STAMP (NO INKS OR DYES) DRAWING PART NUMBER, REVISION (AND VARIANT OR "TYPE" IF APPLICABLE) ON NOTED SURFACE OF PART FOLLOWED ON THE NEXT LINE WITH A THREE DIGIT SERIAL NUMBER. SERIAL NUMBERS START AT 001 FOR THE FIRST ARTICLE AND PROCEED CONSECUTIVELY. USE MINIMUM 0.12" HIGH CHARACTERS, UNLESS THE SIZE OF THE PART DICTATES SMALLER CHARACTERS. EXAMPLE: DXXXXXX-VY, TYPE-XX, S/N XXX

6. APPROXIMATE WEIGHT = 0.78 LB [.35 KG].

7. PART TO BE FREE OF SCRATCHES. NO ABRASION AT CUT EDGES.

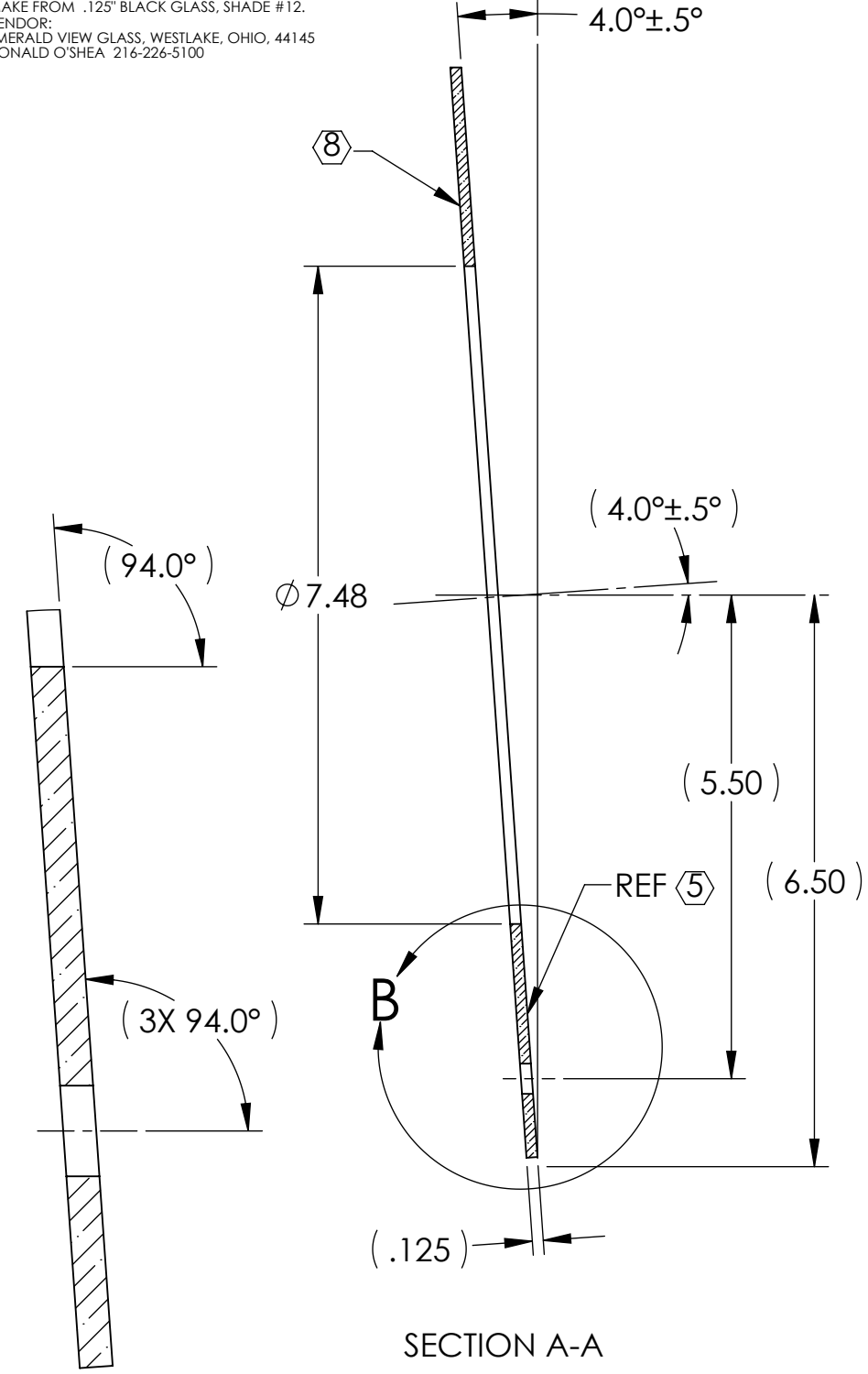
8 AR COATING < .3% REFLECTANCE @1064 NM WAVELENGTH @NORMAL INCIDENCE PER MIL - C - 675A, ONE SIDE (CUT SIDE) AS SHOWN.

9 MAKE FROM .125" BLACK GLASS, SHADE #12. VENDOR: EMERALD VIEW GLASS, WESTLAKE, OHIO, 44145 DONALD O'SHEA 216-226-5100

| REV. | DATE | DCN # | BOM # |
|------|-------------|----------|-------|
| v1 | 20 JAN 2011 | E1100019 | - |
| v2 | 08 MAR 2011 | E1100080 | - |
| v3 | 06 FEB 2012 | E1100351 | - |

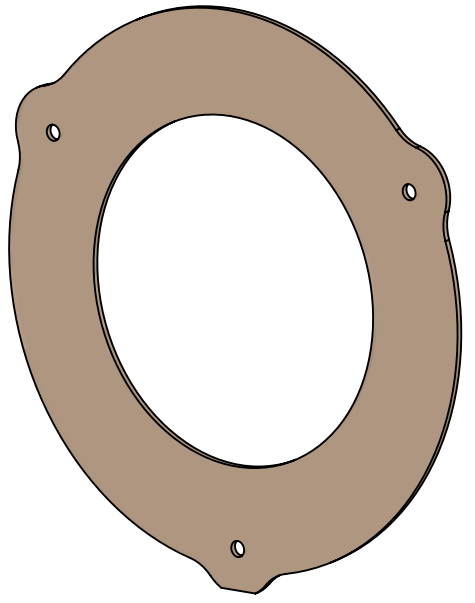
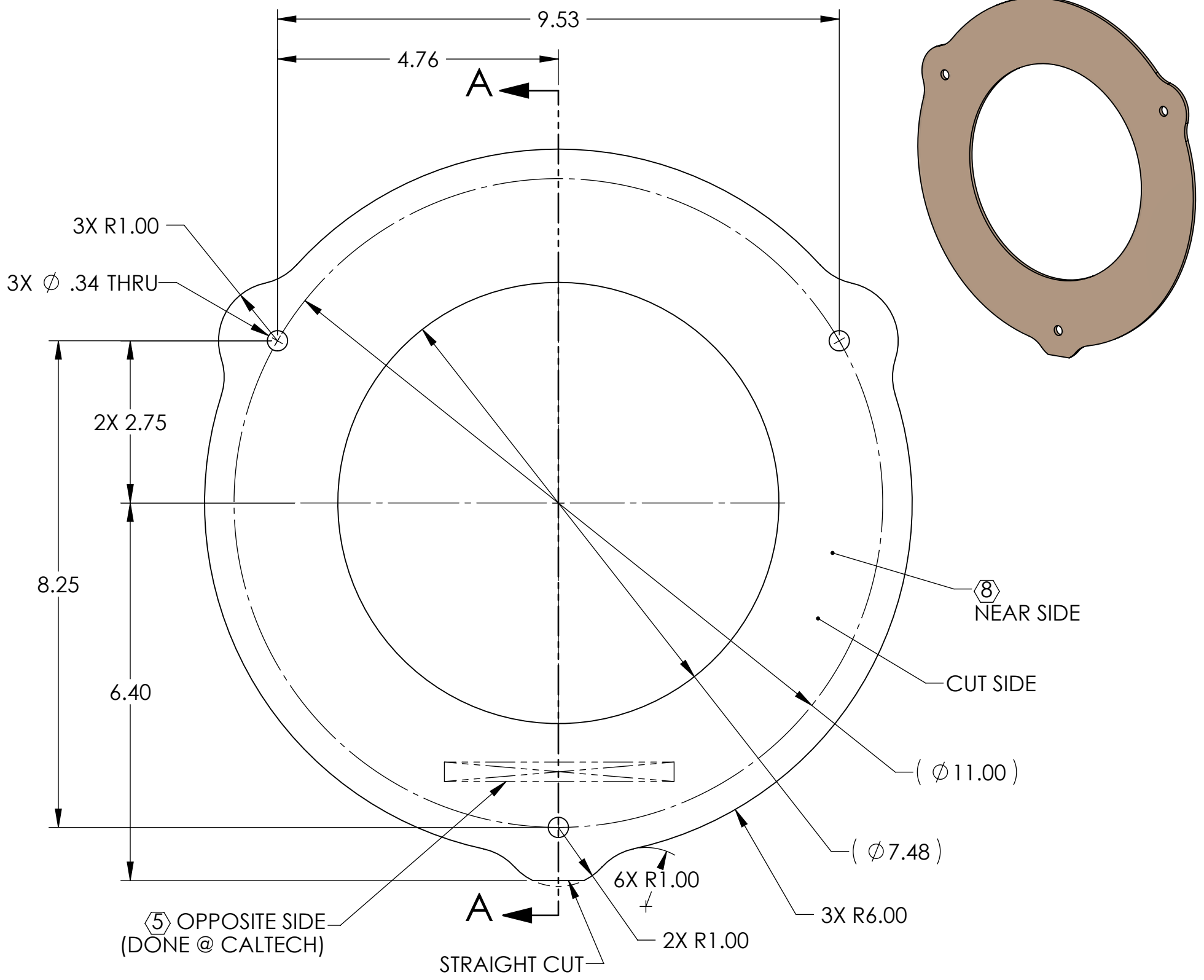
D
C
B
A

D
C
B
A



SECTION A-A

DETAIL B



NOTES AND TOLERANCES: (UNLESS OTHERWISE SPECIFIED)

- INTERPRET DRAWING PER ASME Y14.5-1994.
- REMOVE ALL SHARP EDGES, R.02 MIN.
- DO NOT SCALE FROM DRAWING.
- ALL MACHINING FLUIDS MUST BE FULLY SYNTHETIC, FULLY WATER SOLUBLE AND FREE OF SULFUR, SILICONE, AND CHLORINE.

TOLERANCES:
 .XX ± .01
 .XXX ± .005
 ANGULAR ± 1.0°

LIGO CALIFORNIA INSTITUTE OF TECHNOLOGY
 MASSACHUSETTS INSTITUTE OF TECHNOLOGY

SYSTEM: **ADVANCED LIGO** SUB-SYSTEM: **AOS**

MATERIAL: 9 FINISH: N/A

NEXT ASSY: **D1003120**

PART NAME: **ALIGO TRANSMON TELE BLACK GLASS PLATE**

| | | | | | |
|----------|------------|-------------|------|-----------------|------|
| DESIGNER | K. MAILAND | 05 JAN 2011 | SIZE | DWG. NO. | REV. |
| DRAFTER | M. MILLER | 06 JAN 2011 | B | D1000275 | v3 |
| CHECKER | | | | | |
| APPROVAL | | | | | |

SCALE: NONE PROJECTION: SHEET 1 OF 1

D1000275 ALIGO_TRANSMON_TELE_BLACK_GLASS_PLATE, PART PDM REV: X-069, DRAWING PDM REV: X-052