

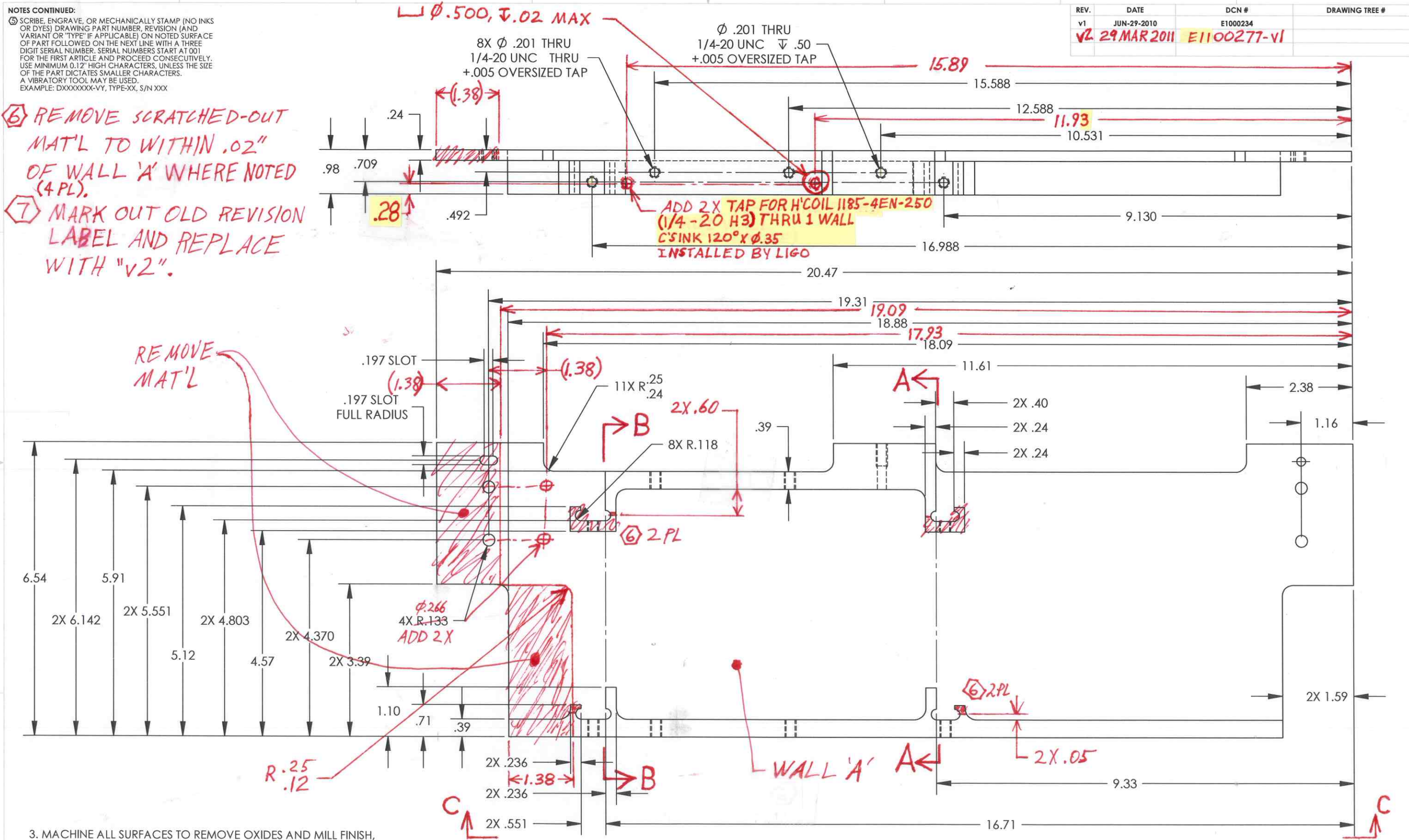
D1000407 aLIGO\_OSUMS\_INTERMEDIATE\_SUPPORT\_RIGHT\_SIDE\_BRACKET, PART PDM REV: X-010, DRAWING PDM REV: X-011

NOTES CONTINUED:  
5. SCRIBE, ENGRAVE, OR MECHANICALLY STAMP (NO INKS OR DYES) DRAWING PART NUMBER, REVISION (AND VARIANT OR 'TYPE' IF APPLICABLE) ON NOTED SURFACE OF PART FOLLOWED ON THE NEXT LINE WITH A THREE DIGIT SERIAL NUMBER. SERIAL NUMBERS START AT 001 FOR THE FIRST ARTICLE AND PROCEED CONSECUTIVELY. USE MINIMUM 0.12" HIGH CHARACTERS, UNLESS THE SIZE OF THE PART DICTATES SMALLER CHARACTERS. A VIBRATORY TOOL MAY BE USED.  
EXAMPLE: DXXXXXX-VY, TYPE-XX, S/N XXX

REV.	DATE	DCN #	DRAWING TREE #
v1	JUN-29-2010	E1000234	
<b>v2</b>	<b>29 MAR 2011</b>	<b>E1100277-V1</b>	

6 REMOVE SCRATCHED-OUT MAT'L TO WITHIN .02" OF WALL 'A' WHERE NOTED (4 PL).

7 MARK OUT OLD REVISION LABEL AND REPLACE WITH "v2".



3. MACHINE ALL SURFACES TO REMOVE OXIDES AND MILL FINISH, USE OF ABRASIVE TECHNIQUES IS NOT ALLOWED.
2. DO NOT USE SANDPAPER, SCOTCH BRITE OR SIMILAR PRODUCTS.
1. ALL PARTS SHALL BE MANUFACTURED IN ACCORDANCE WITH LIGO SPECIFICATION E0900364

NOTES AND TOLERANCES: (UNLESS OTHERWISE SPECIFIED)

DIMENSIONS ARE IN INCHES

TOLERANCES:  
XX ± .01  
XXX ± .005

ANGULAR ± 0.1°

1. INTERPRET DRAWING PER ASME Y14.5-1994.  
2. REMOVE ALL SHARP EDGES, R.02 MIN.  
3. DO NOT SCALE FROM DRAWING.  
4. ALL MACHINING FLUIDS MUST BE FULLY SYNTHETIC, FULLY WATER SOLUBLE AND FREE OF SULFUR, SILICONE, AND CHLORINE.

MATERIAL: 6061-T6 AL ALLOY

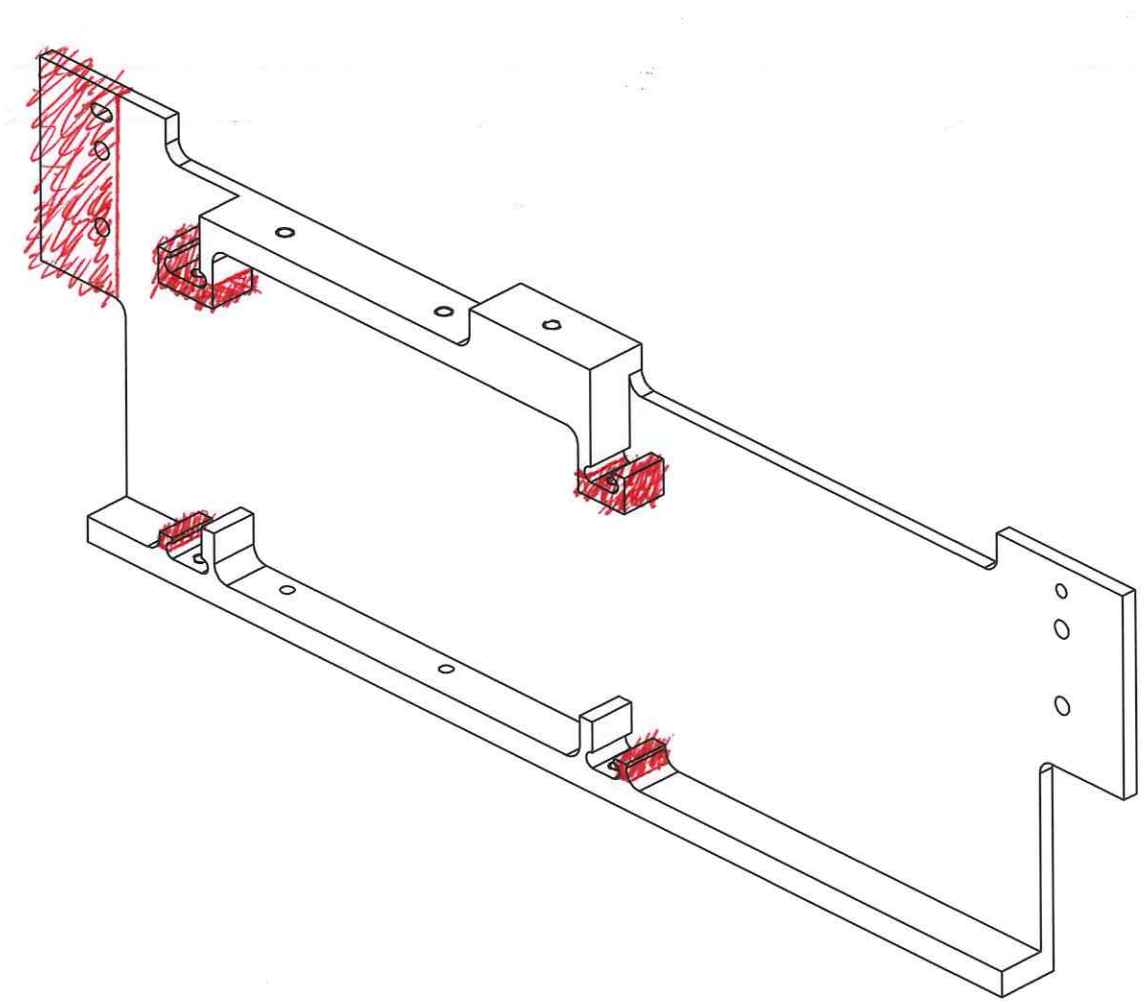
FINISH: 32 μinch

LIGO CALIFORNIA INSTITUTE OF TECHNOLOGY MASSACHUSETTS INSTITUTE OF TECHNOLOGY		PART NAME aLIGO_OSUMS_INTERMEDIATE_SUPPORT_RIGHT_SIDE_BRACKET	
SYSTEM aLIGO AOS	SUB-SYSTEM TRANSMON	DESIGNER I ROMERO 6/7/10	SIZE DWG. NO. B D1000407
NEXT ASSY D1000549	CHECKER K MAILAND 6/7/10	APPROVAL K MAILAND 6/7/10	REV. v2
SCALE: 1:8		PROJECTION:	
		SHEET 1 OF 2	

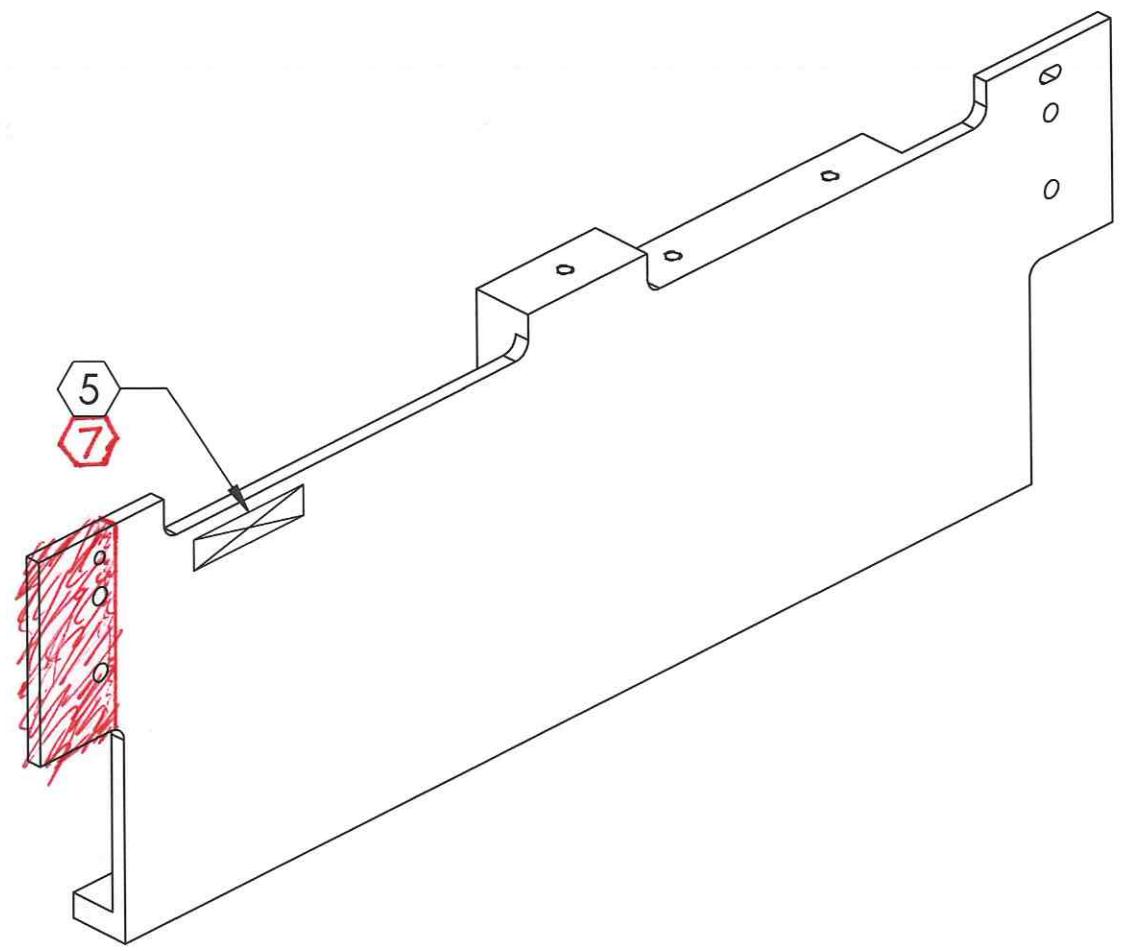
D1000407 aLIGO\_OSUMS\_INTERMEDIATE\_SUPPORT\_RIGHT\_SIDE\_BRACKET, PART PDM REV: X-010, DRAWING PDM REV: X-011

8 7 6 5 4 3 2 1

D  
C  
B  
A



**INSIDE ISO VIEW**



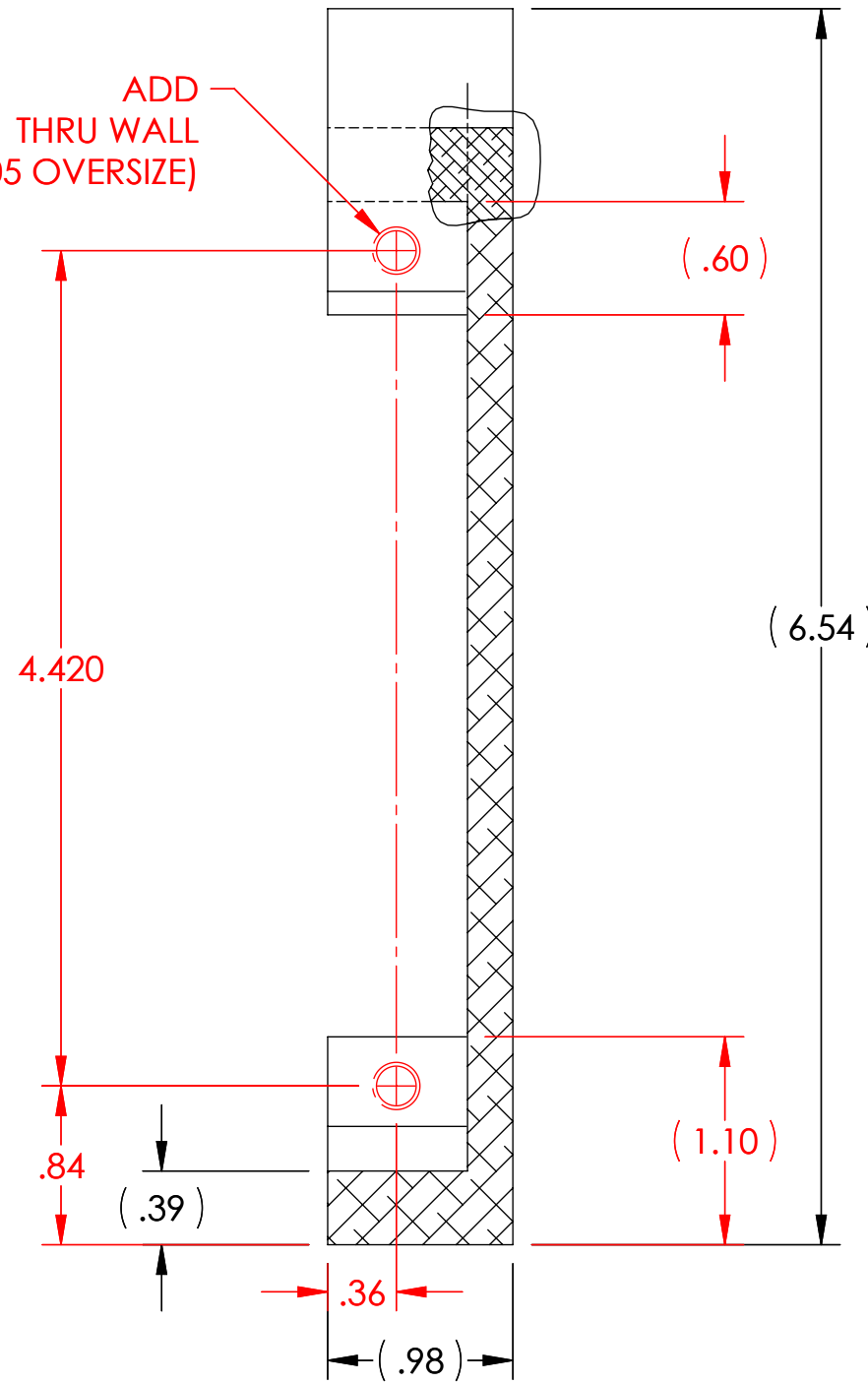
**OUTSIDE ISO VIEW**

8 7 6 5 4 3 2 1



<b>LIGO</b> CALIFORNIA INSTITUTE OF TECHNOLOGY MASSACHUSETTS INSTITUTE OF TECHNOLOGY		REV.
SIZE DWG. NO.	D1000407	A7 V2
SCALE: 1:8	PROJECTION:	SHEET 2 OF 2

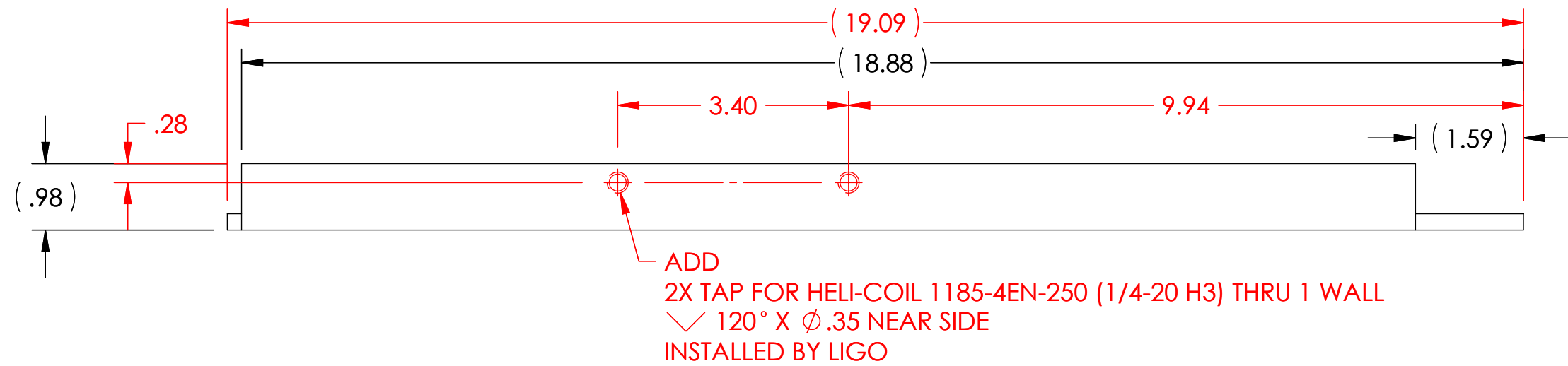
D1000407-v2 SHEETS 3&4, PART PDM REV: , DRAWING PDM REV:

ADD  
2X 1/4-20 UNC-2B H11 THRU WALL  
(.005 OVERSIZE)



VIEW A-A (ENLARGED)  
VIEW B-B OPPOSITE  
(SHOWN AFTER MATERIAL REMOVAL)

 CALIFORNIA INSTITUTE OF TECHNOLOGY MASSACHUSETTS INSTITUTE OF TECHNOLOGY	
SIZE <b>B</b>	DWG. NO. D1000407
SCALE:	PROJECTION:  SHEET 3
	REV. v2



VIEW C-C  
(SHOWN AFTER MATERIAL REMOVAL)

D1000407-v2 SHEETS 3&4, PART PDM REV.: , DRAWING PDM REV.:

 <b>CALIFORNIA INSTITUTE OF TECHNOLOGY</b> <b>MASSACHUSETTS INSTITUTE OF TECHNOLOGY</b>		
SIZE	DWG. NO.	REV.
B	D1000407	v2
SCALE:	PROJECTION:	SHEET 4