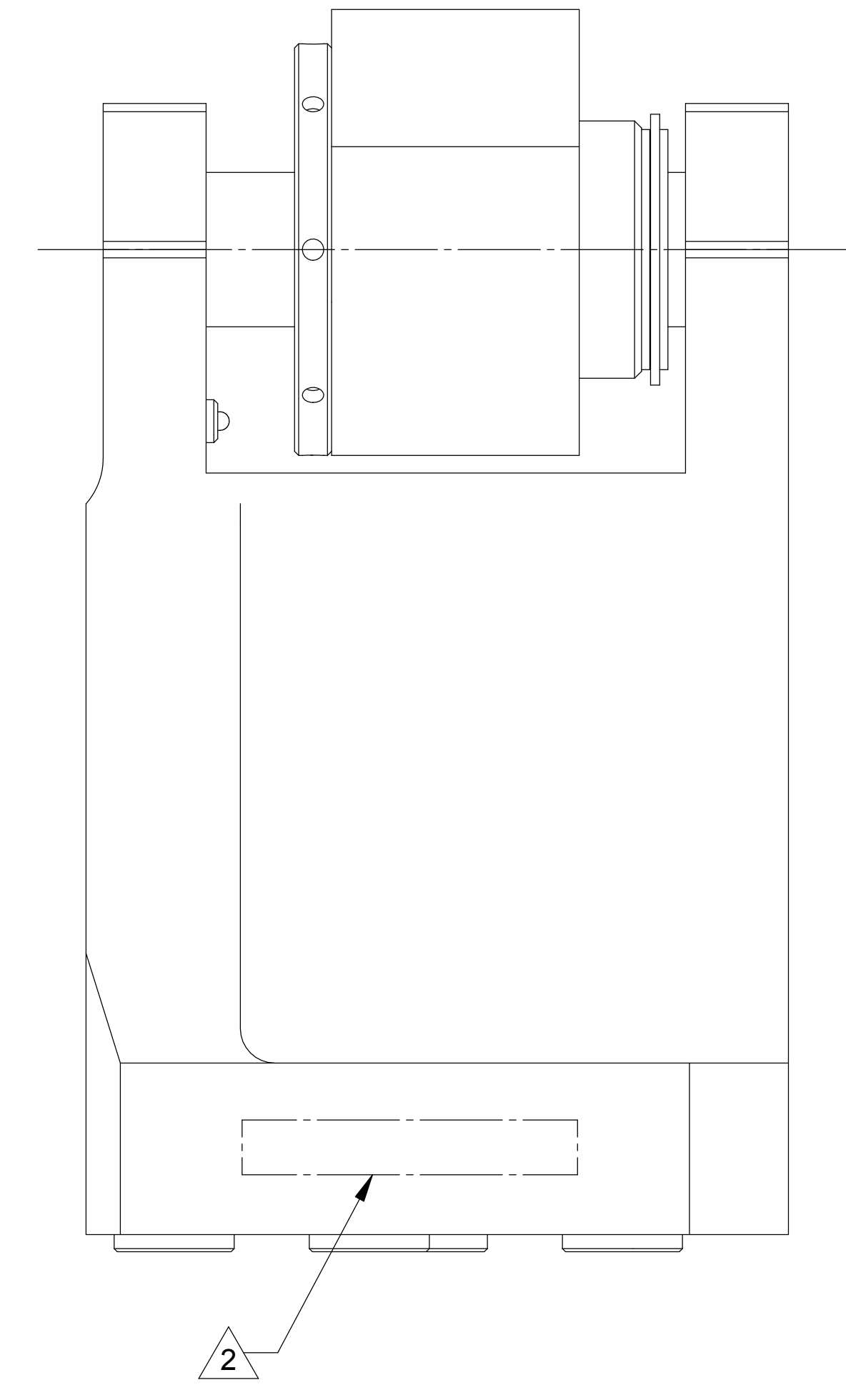
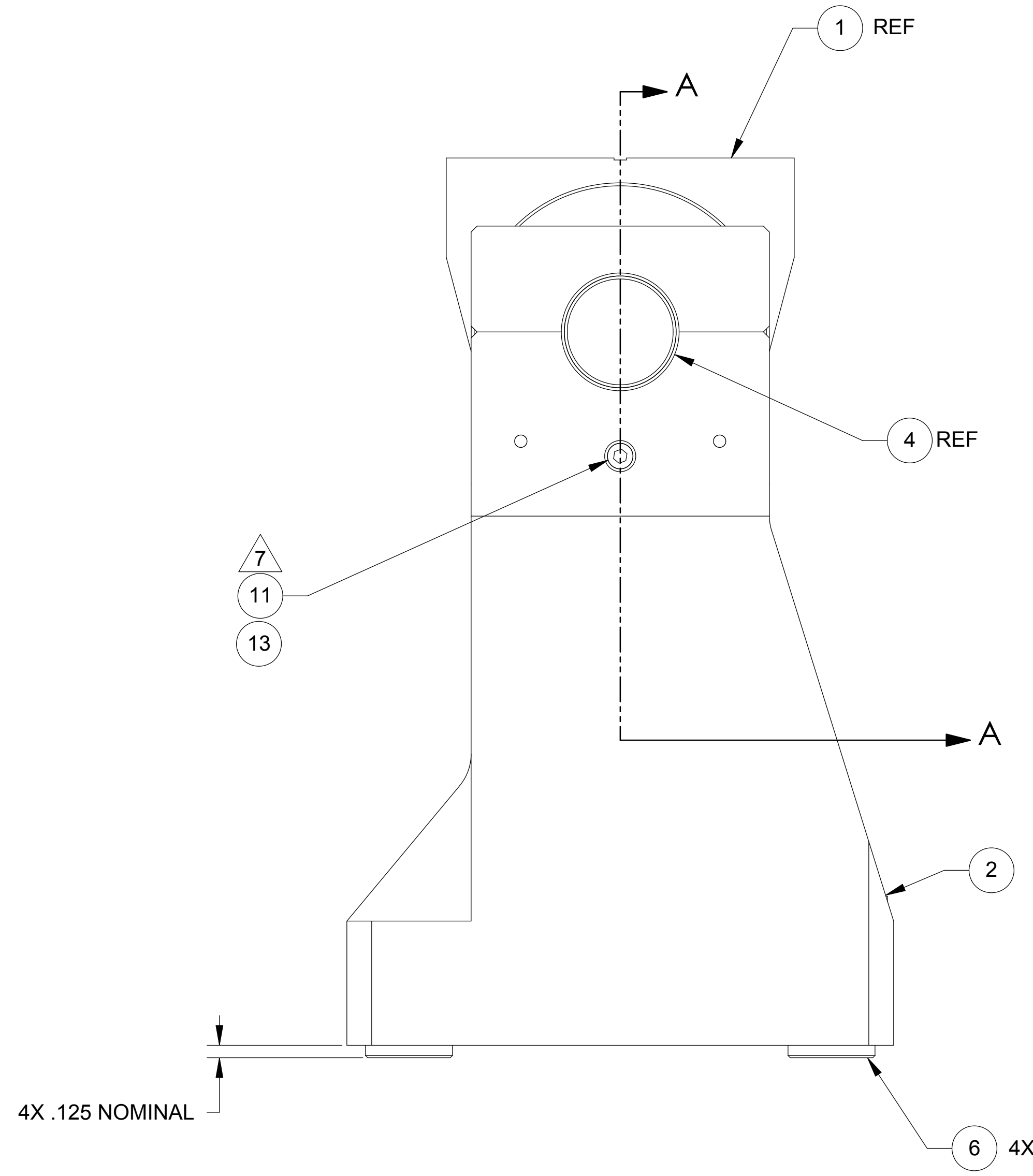
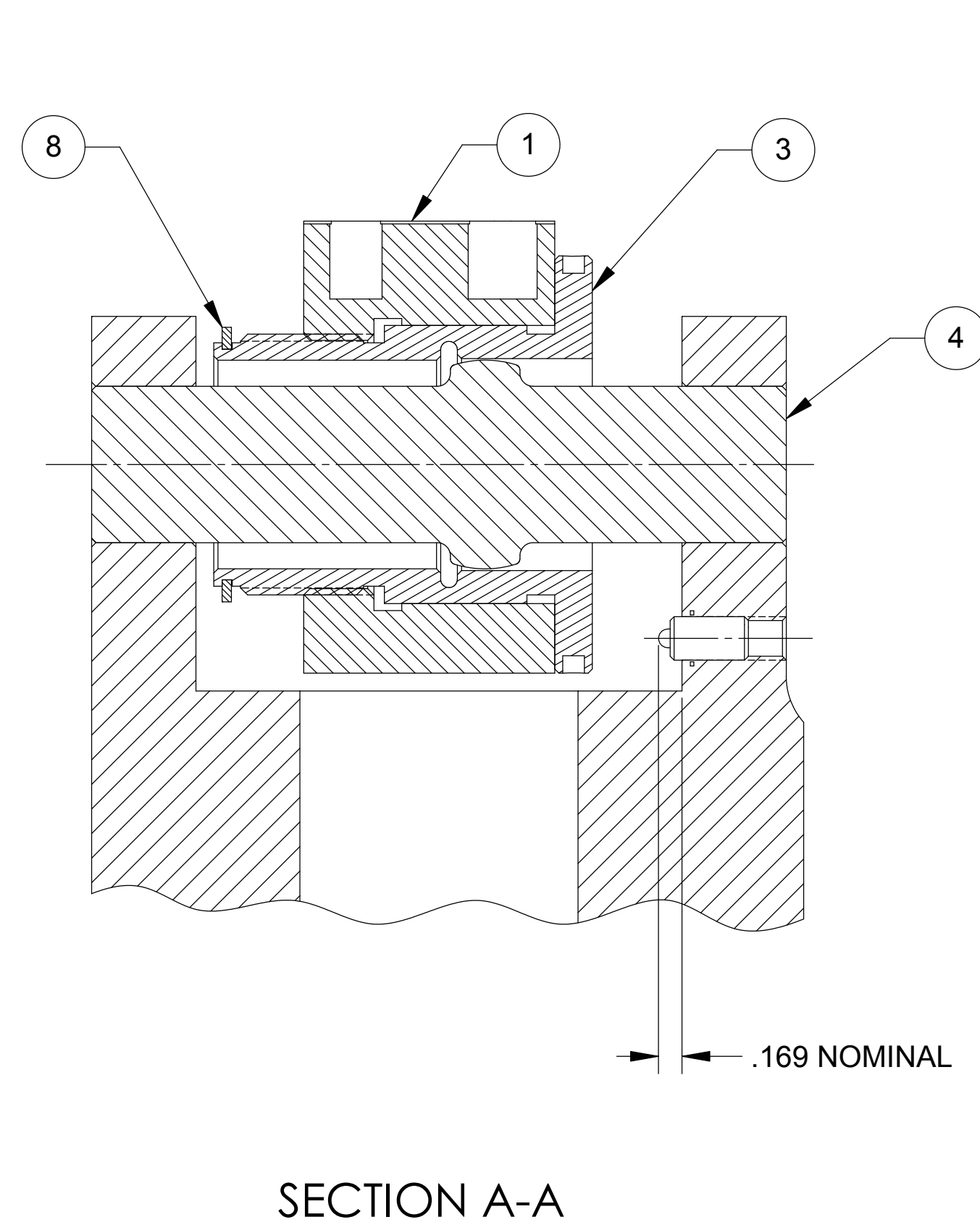
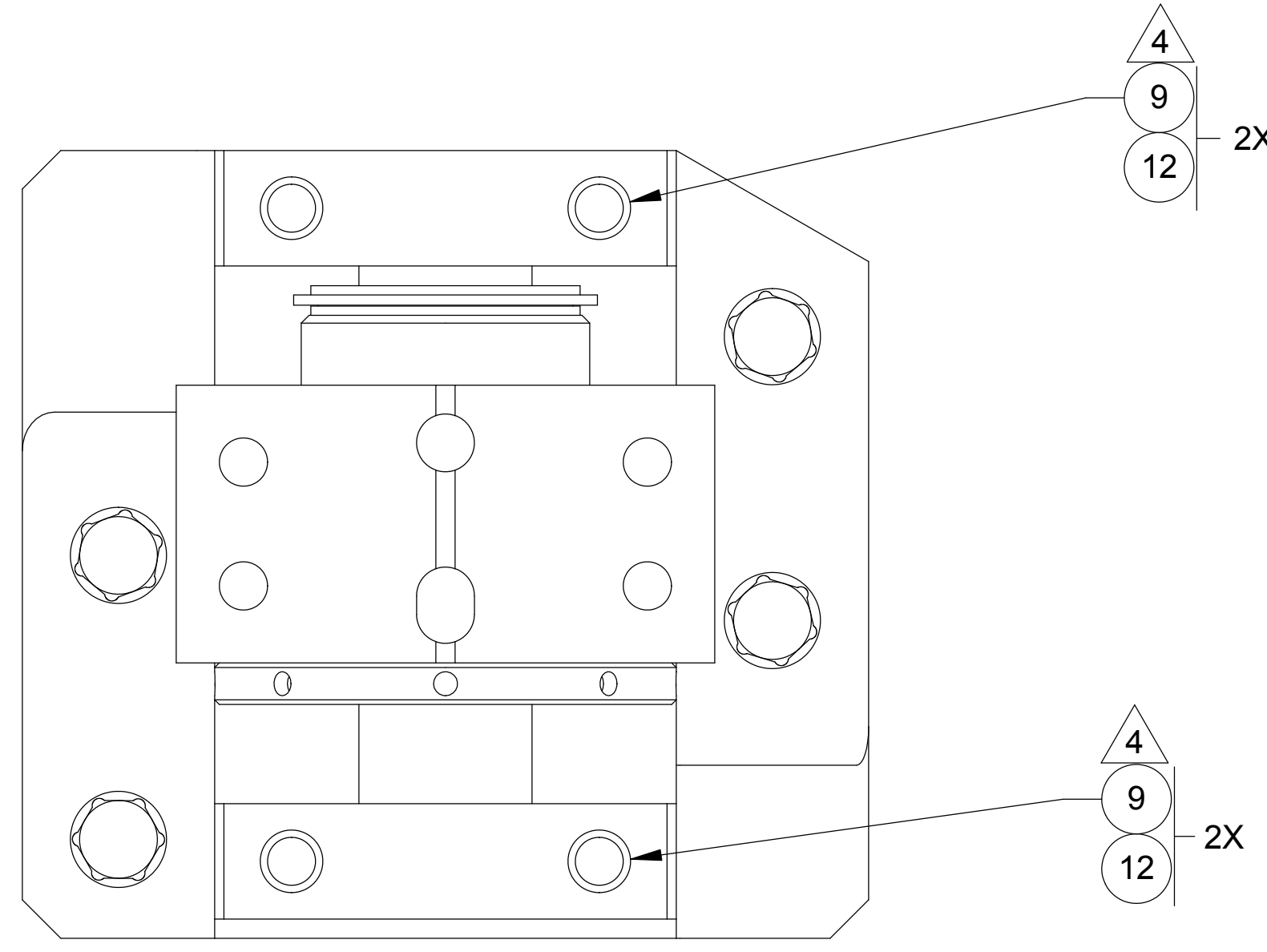


LTR		ZONE		REVISIONS										DWN	CHK	P-ENG	CONF	ME	STRS	MATL	PROJ	QA	RELEASE DATE	
A				INITIAL RELEASE																				



**-1 SHOWN  
-2 SEE SHEET 2**

NOTES: UNLESS OTHERWISE SPECIFIED.

- ALL PARTS SHALL BE MANUFACTURED IN ACCORDANCE WITH ASI SPECIFICATION 20008225 (LIGO E048225).
- MARK ASSY AND SERIAL NUMBER IN LOCATION APPROXIMATELY AS SHOWN USING 0.13-INCH HIGH CHARACTERS IN ACCORDANCE WITH 20006886, TYPE I, CLASSES 4, 5, OR 6. SERIAL NUMBERS START AT 001 FOR FIRST PART AND PROCEED CONSECUTIVELY.
- RECORD WEIGHT TO NEAREST 0.1 LB ON INSPECTION REPORT AFTER FINAL ASSEMBLY. ESTIMATED WEIGHT IS: -1, 32.0 LBS, -2, 8.4 LBS.
- TORQUE BOLTS TO 108 IN LBS. DO NOT CLOSE GAP EITHER SIDE.
- SOURCE OF SUPPLY: U-C COMPONENTS, INC. MORGAN HILL, CALIFORNIA 95037
- SOURCE OF SUPPLY: MC MASTER CARR SANTA FE SPRINGS, CALIFORNIA 90670-2932
- TORQUE ITEM 13, JAM SCREW, TO 10 IN-LBS.
- BOLT TORQUING PROCEDURE SHALL ENSURE THAT THE SPECIFIED TORQUE IS APPLIED WITHIN A TOLERANCE OF +5% / -10%.
- ALL SCREWS SHALL BE SILVER PLATED. DIMENSIONAL TOLERANCES PER UNC/UNF-2A APPLY AFTER PLATING.
- SOURCE OF SUPPLY: SMALLEY STEEL RING COMPANY LAKE ZURICH, ILLINOIS 60047

QTY	REGD	ITEM NO	REF DES	CAGE NO	PART OR IDENTIFYING NO	NOMENCLATURE OR DESCRIPTION	SPECIFICATION	MATERIAL OR NOTE	ZONE
5	1	1	13		C-1808-A	SCREW, SHC, VENTED	.3125-18 UNC X .500 L	18-8 CRES	
6	4	4	12		98017A200	WASHER, FLAT	.390 ID, .625 OD X .063 THK	18-8 CRES	
6	1	1	11		84985A62	PIN, SPRING LOADED	.3125-18 UNC THD X 1.750 L	CRES	
5	4		10		C-1628-A	SCREW, SHC	.375-16 UNC X 1.750 L	18-8 CRES	
5		4	9		C-1632-A	SCREW, SHC	.375-16 UNC X 2.000 L	18-8 CRES	
10	1	1	8		FSE-0175	RING, RETAINING	Ø1.750 SHAFT X .067 GROOVE	316 CRES	
			7						
4	4	6			20007937-1	FOOT, ADJUSTABLE			
1		5			20007936-1, -2	BASE AND CAPS (MATCHED SET)			
1	1	4			20007935-1	LOCATOR, SPHERICAL PIN			
1	1	3			20007934-1	LOCK SLEEVE			
1	1	2			20007933-1, -2	POST AND CAPS (MATCHED SET)			
1	1	1			20007932-1	SLEEVE HOUSING			

UNLESS OTHERWISE SPECIFIED DIMENSIONS ARE IN INCHES

DECIMALS: .XX ± .03    ANGLES: XXX ± .010 ± 12°

MACHINE FINISH: ---

DO NOT SCALE DRAWING INTERPRET DWG PER ASME Y14.5M - 1994

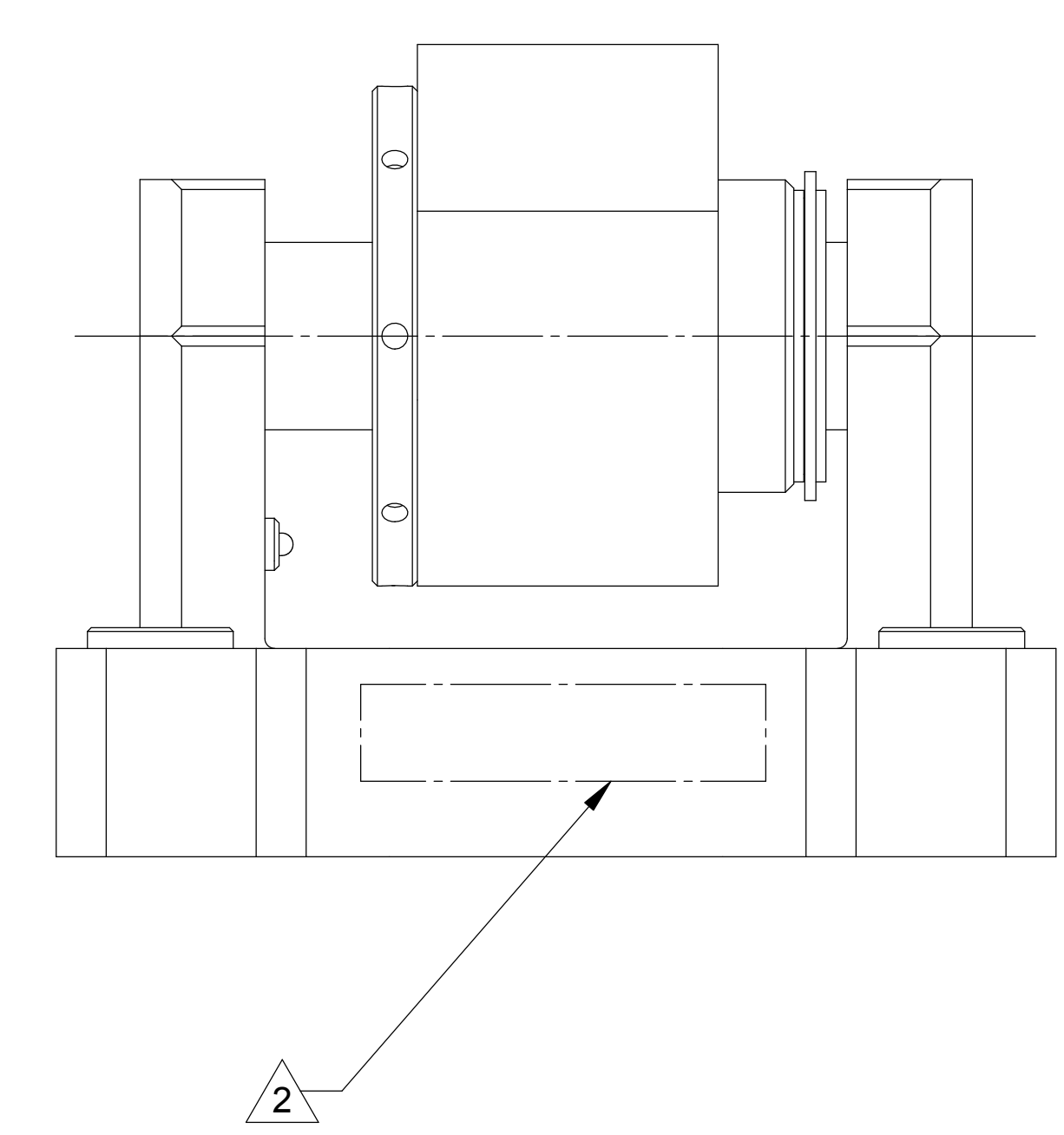
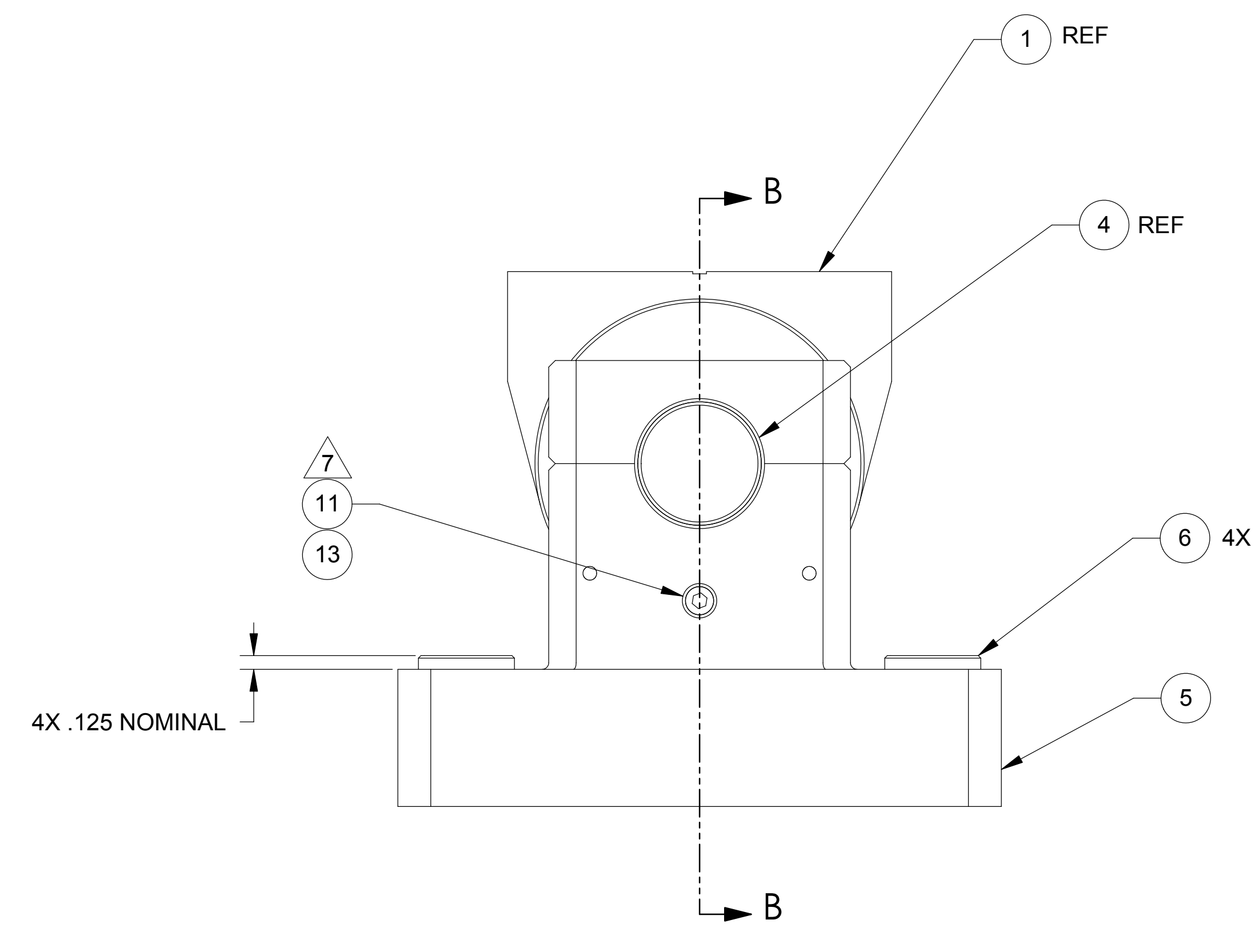
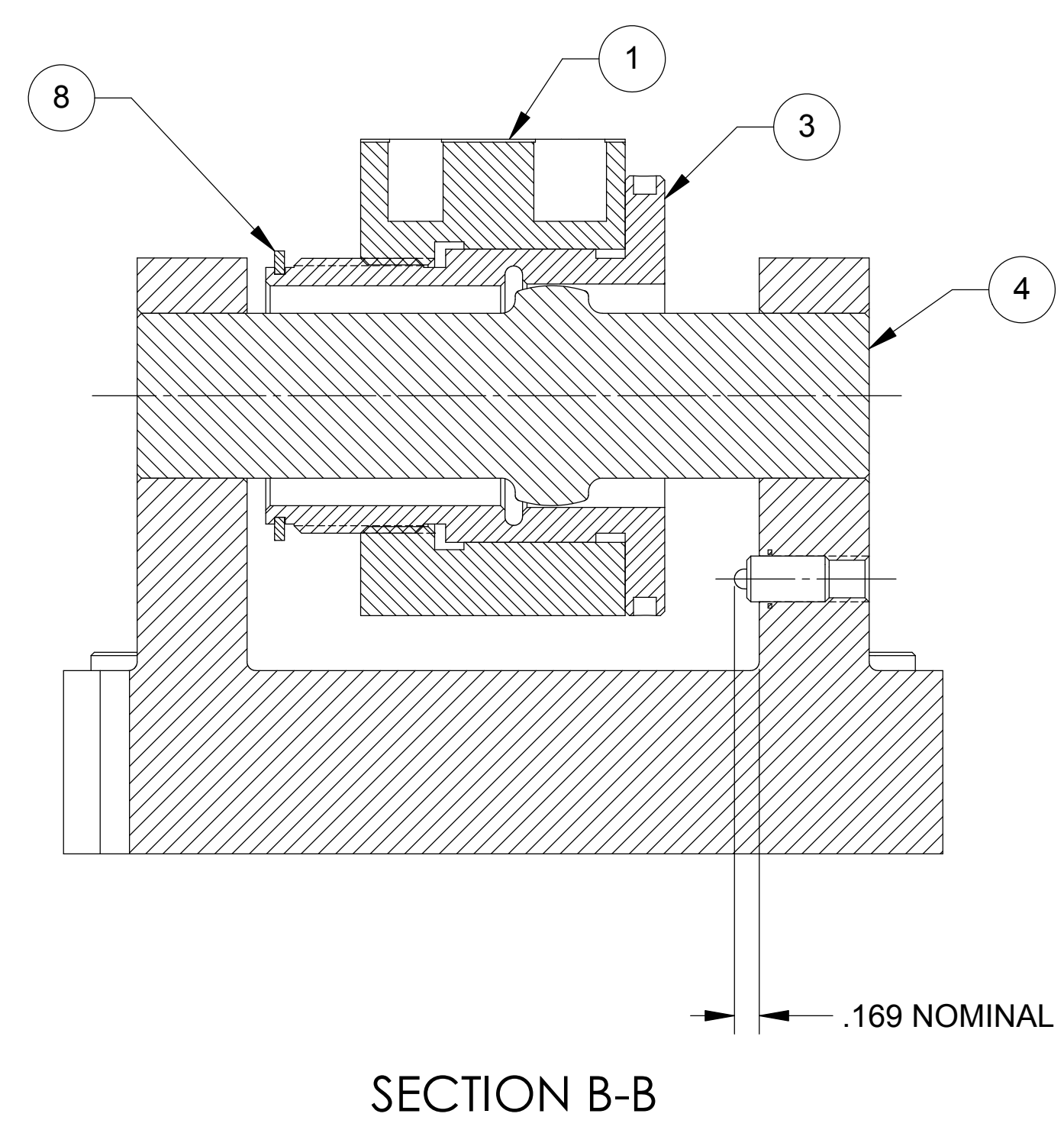
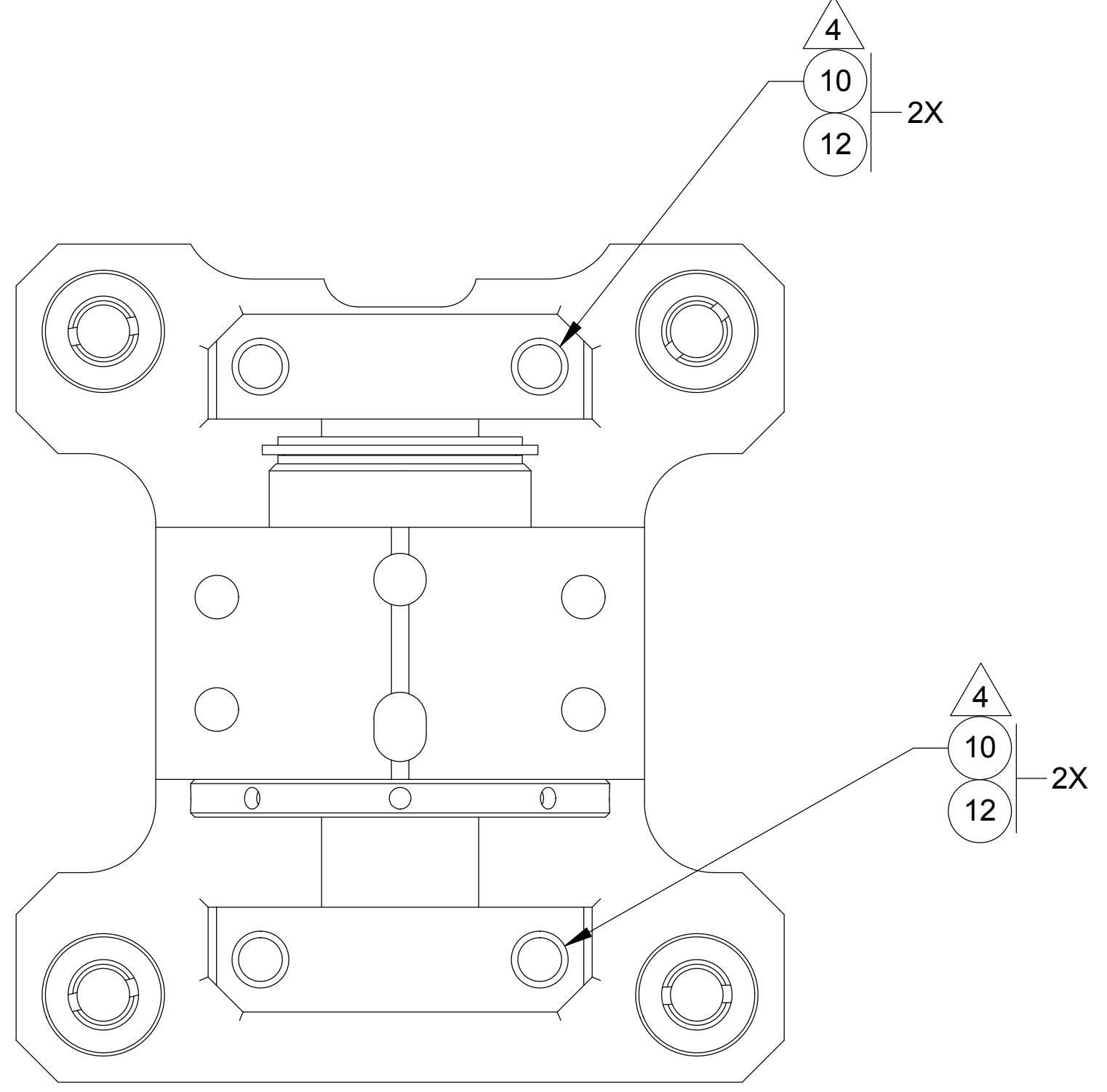
MATERIAL: SEE PARTS LIST

**RELEASED 3/4/2005**

ALLIANCE SPACESTYSTEMS, INC.  
1250 Lincoln Ave., Suite 100  
Pasadena, CA 91103

**KINEMATIC LOCATOR/LOCK ASSY - STAGE 0-1 AND 1-2 LIGO D047941-A**

SCALE: 1:1    UNCLASSIFIED    SHEET 1 OF 2



**-2 SHOWN  
-1 SEE SHEET 1**

NOTES: SEE SHEET ONE

THIS DOCUMENT MAY CONTAIN ITAR CONTROLLED INFORMATION  
AND/OR COMMERCE CONTROLLED INFORMATION  
EXPORT RESTRICTIONS MAY APPLY