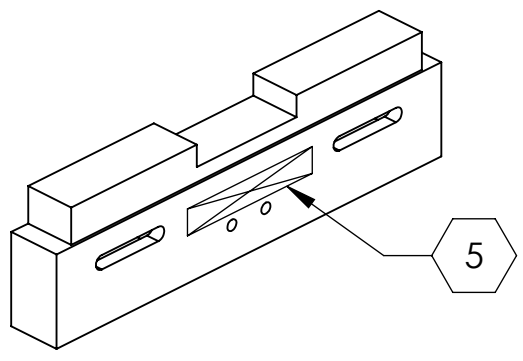
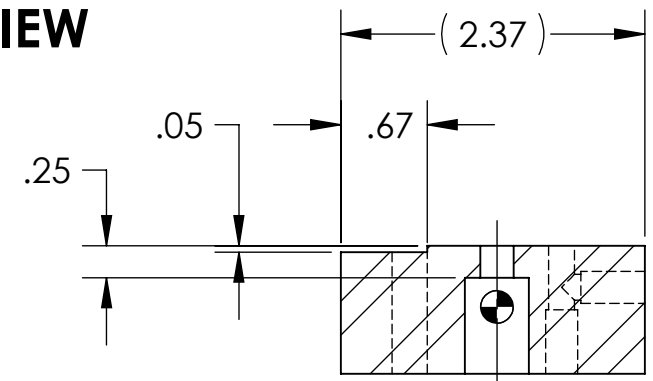


NOTES CONTINUED:
 5. SCRIBE, ENGRAVE, OR MECHANICALLY STAMP (NO INKS OR DYES) DRAWING PART NUMBER, REVISION (AND VARIANT OR "TYPE" IF APPLICABLE) ON NOTED SURFACE OF PART FOLLOWED ON THE NEXT LINE WITH A THREE DIGIT SERIAL NUMBER. SERIAL NUMBERS START AT 001 FOR THE FIRST ARTICLE AND PROCEED CONSECUTIVELY. USE MINIMUM 0.12" HIGH CHARACTERS, UNLESS THE SIZE OF THE PART DICTATES SMALLER CHARACTERS. A VIBRATORY TOOL MAY BE USED.
 EXAMPLE: DXXXXXX-VY, TYPE-XX, S/N XXX

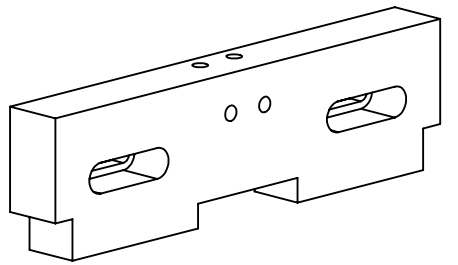
REV.	DATE	DCN #	DRAWING TREE #
v1	JUN-29-2010	E1000234	



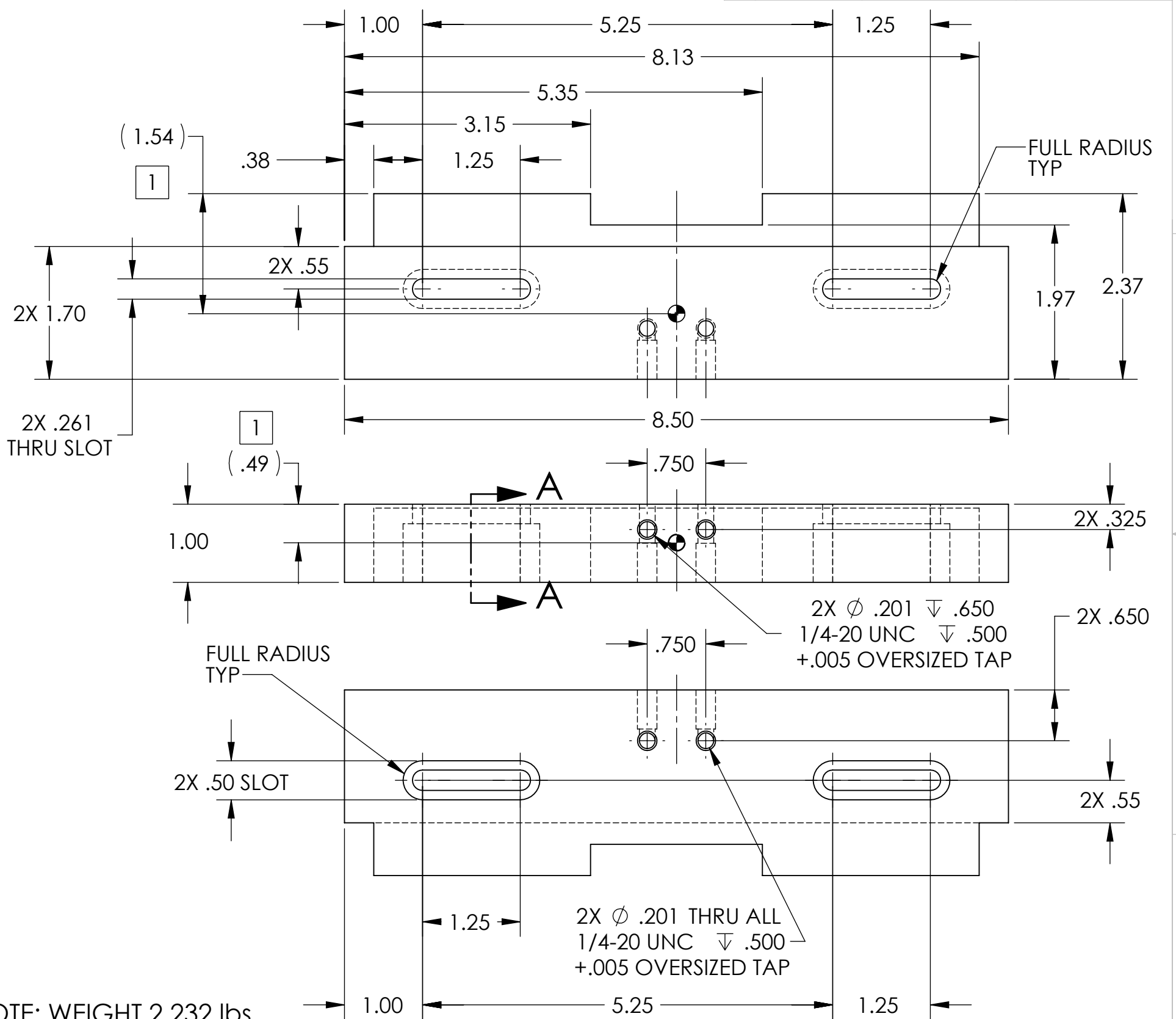
ISO VIEW



SECTION A-A
SCALE 1 : 1.5



ISO VIEW II



NOTE: WEIGHT 2.232 lbs.

- 4. MACHINE ALL SURFACES TO REMOVE OXIDES AND MILL FINISH, USE OF ABRASIVE TECHNIQUES IS NOT ALLOWED.
 - 3. DO NOT USE SANDPAPER, SCOTCH BRITE OR SIMILAR PRODUCTS.
 - 2. ALL PARTS SHALL BE MANUFACTURED IN ACCORDANCE WITH LIGO SPECIFICATION E0900364
- 1 CENTER OF GRIVITY (CG) DIMENSIONS SHOWN FOR INTERNAL REFERENCE ONLY

DIMENSIONS ARE IN		TOLERANCES:		ANGULAR ± 5°		NOTES AND TOLERANCES: (UNLESS OTHERWISE SPECIFIED)		MATERIAL		FINISH		SYSTEM		SUB-SYSTEM		PART NAME		DESIGNER		DRAFTER		CHECKER		APPROVAL		SIZE DWG. NO.		REV.	
.XX ± .010		.XXX ± .005				1. INTERPRET DRAWING PER ASME Y14.5-1994. 2. REMOVE ALL SHARP EDGES, R.02 MIN. 3. DO NOT SCALE FROM DRAWING. 4. ALL MACHINING FLUIDS MUST BE FULLY SYNTHETIC, FULLY WATER SOLUBLE AND FREE OF SULFUR, SILICONE, AND CHLORINE.		S. STL. 304		32μinch		LIGO CALIFORNIA INSTITUTE OF TECHNOLOGY MASSACHUSETTS INSTITUTE OF TECHNOLOGY		aLIGO AOS		TRANSMON		aLIGO TOP ADD MASS SIDE SLOTTED BAR		I ROMERO 4/14/10		K MAILAND 4/14/10		K MAILAND 4/14/10		B D1000656		v1	

D1000656 aLIGO TOP ADD MASS SIDE SLOTTED BAR, PART PDM REV: X-004, DRAWING PDM REV: X-004