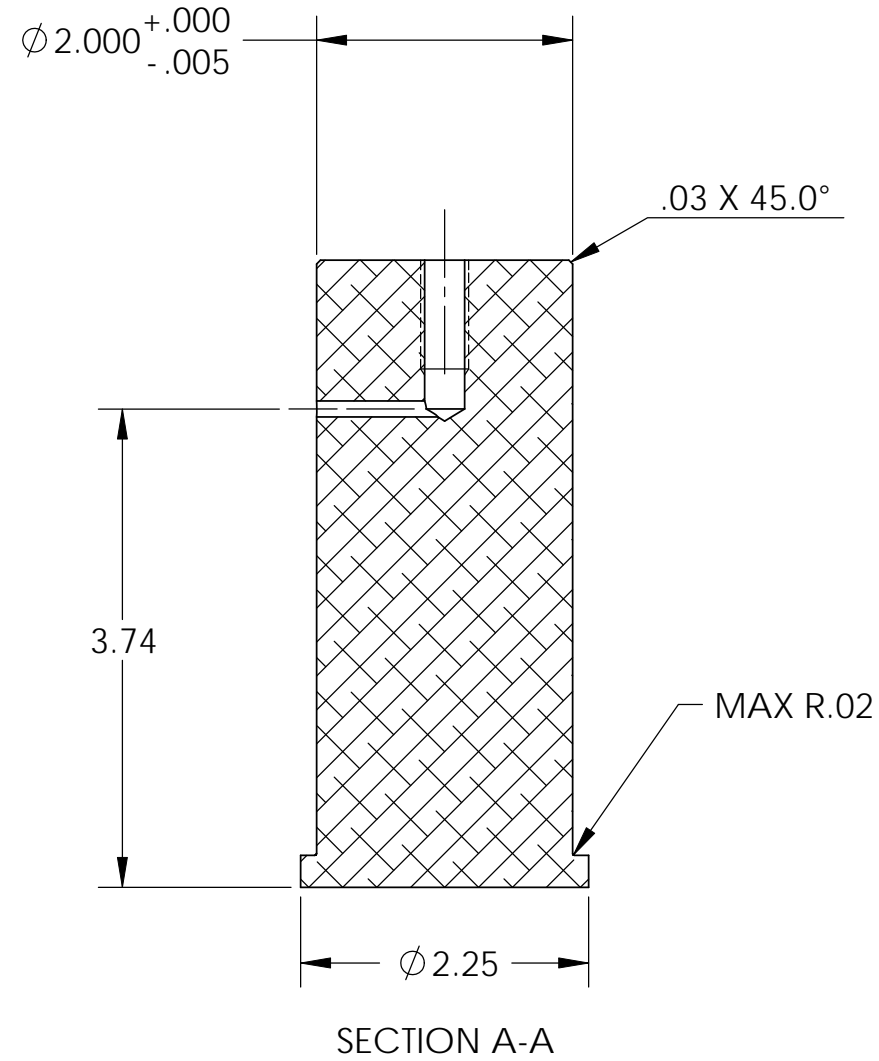
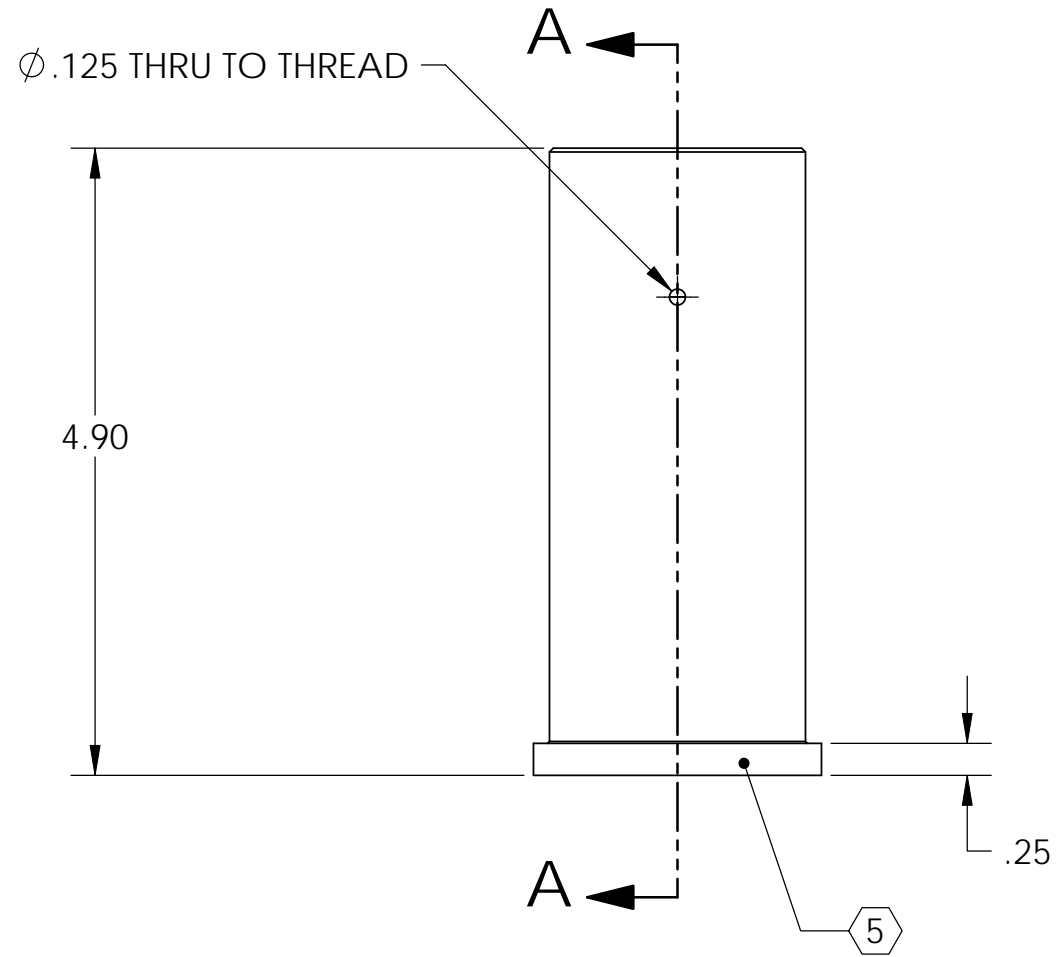
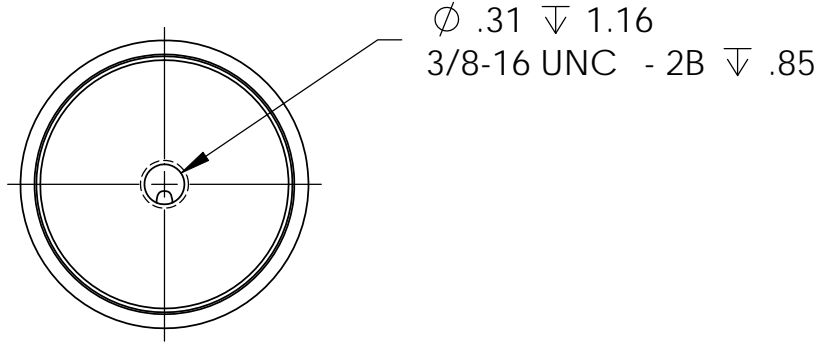


D1000747 Pin, Lift Hook Receiver, BSC-ISI aLIGO, PART PDM REV: X-002, DRAWING PDM REV: X-003

REV.	DATE	DCN #	DRAWING TREE #
v1	20 Apr. 2010	E1000152	E1000025

NOTES CONTINUED:
 5. SCRIBE, ENGRAVE, OR MECHANICALLY STAMP (NO INKS OR DYES) DRAWING PART NUMBER, REVISION (AND VARIANT OR 'TYPE' IF APPLICABLE ON NOTED SURFACE OF PART FOLLOWED ON THE NEXT LINE WITH A THREE DIGIT SERIAL NUMBER. SERIAL NUMBERS START AT 001 FOR THE FIRST ARTICLE AND PROCEED CONSECUTIVELY. USE MINIMUM 0.12 HIGH CHARACTERS, UNLESS THE SIZE OF THE PART DICTATES SMALLER CHARACTERS. A VIBRATORY TOOL MAY BE USED. EXAMPLE DXXXXXXX-VY, TYPE-XX, S/N XXX.
 6. APPROXIMATE WEIGHT = 4.479 LB.
 7. MACHINE ALL SURFACES TO REMOVE OXIDES AND MILL FINISH. USE OF ABRASIVE REMOVAL TECHNIQUES (INCLUDING SANDING OR SCOURING FOR MATTE FINISH) IS NOT ALLOWED.
 8. ALL PARTS SHALL BE MANUFACTURED IN ACCORDANCE WITH LIGO SPECIFICATION E0900364.



NOTES AND TOLERANCES: (UNLESS OTHERWISE SPECIFIED)				LIGO CALIFORNIA INSTITUTE OF TECHNOLOGY MASSACHUSETTS INSTITUTE OF TECHNOLOGY		PART NAME	
DIMENSIONS ARE IN INCHES		1. INTERPRET DRAWING PER ASME Y14.5-1994. 2. REMOVE ALL SHARP EDGES, R.02 MIN. 3. DO NOT SCALE FROM DRAWING. 4. ALL MACHINING FLUIDS MUST BE FULLY SYNTHETIC, FULLY WATER SOLUBLE AND FREE OF SULFUR, SILICONE, AND CHLORINE.		SYSTEM ADVANCED LIGO		SUB-SYSTEM SEI	
TOLERANCES: .XX ± .01 .XXX ± .005		MATERIAL 304 SSSL		FINISH 63 μ inch		NEXT ASSY D1000744	
ANGULAR ± 0.5°		DESIGNER S.BARNUM		DATE 20 Apr. 2010		SIZE DWG. NO. B D1000747	
		DRAFTER M.HILLARD		DATE 20 Apr. 2010		REV. v1	
		CHECKER F.MATICHARD		DATE 20 Apr. 2010		SCALE: 2:3	
		APPROVAL K.MASON		DATE 20 Apr. 2010		PROJECTION: SHEET 1 OF 1	