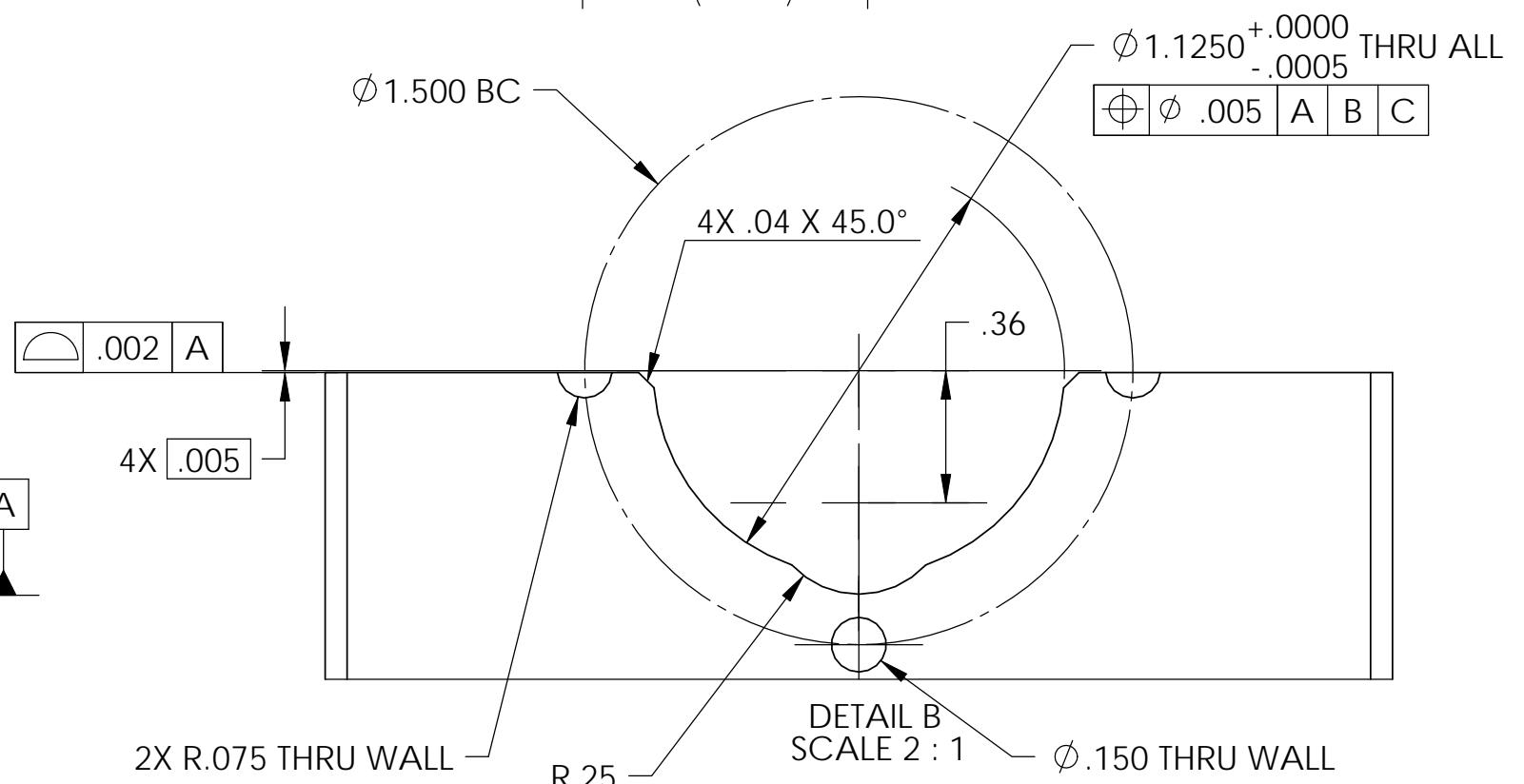
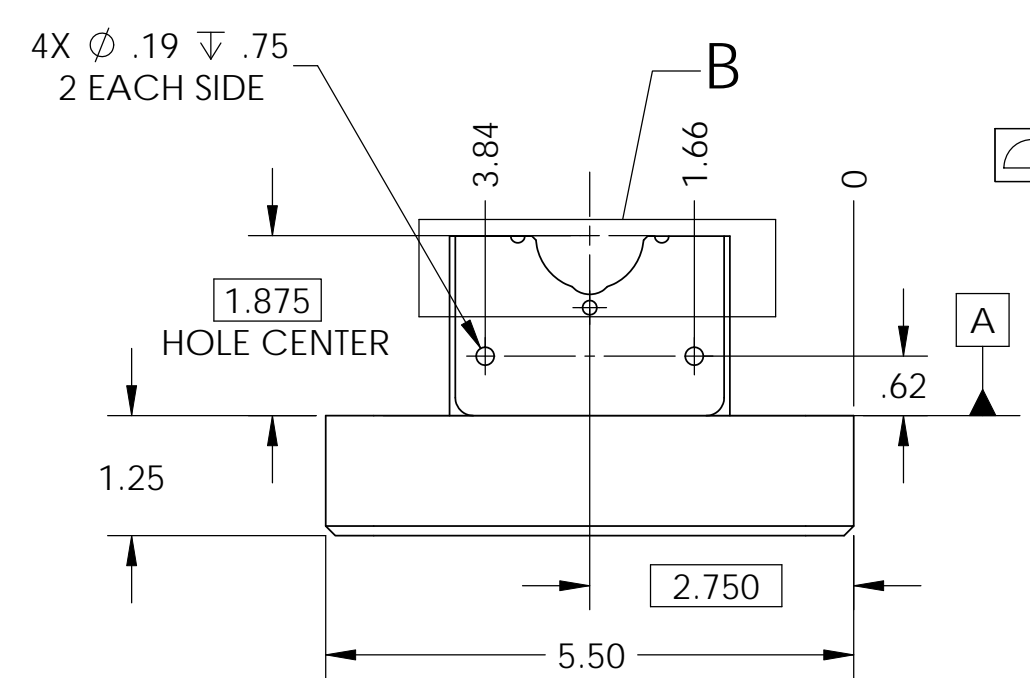
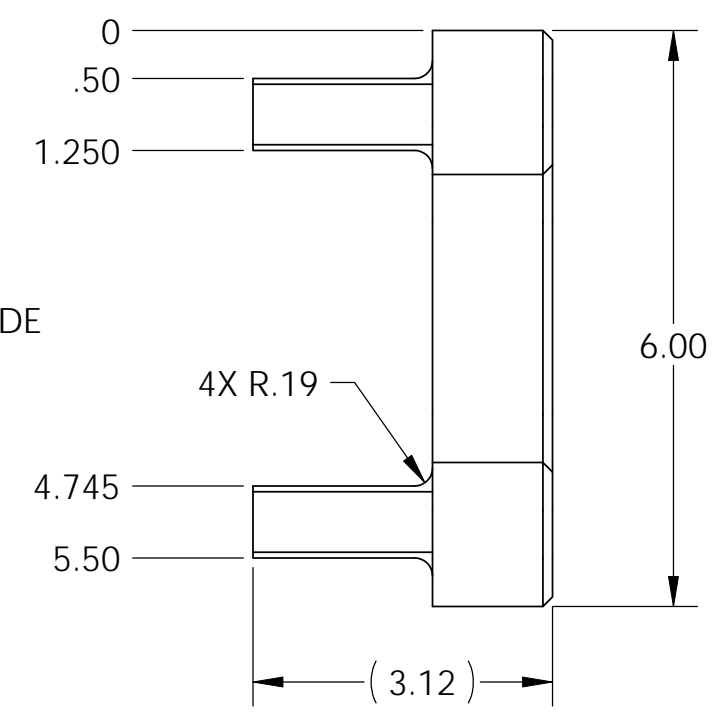
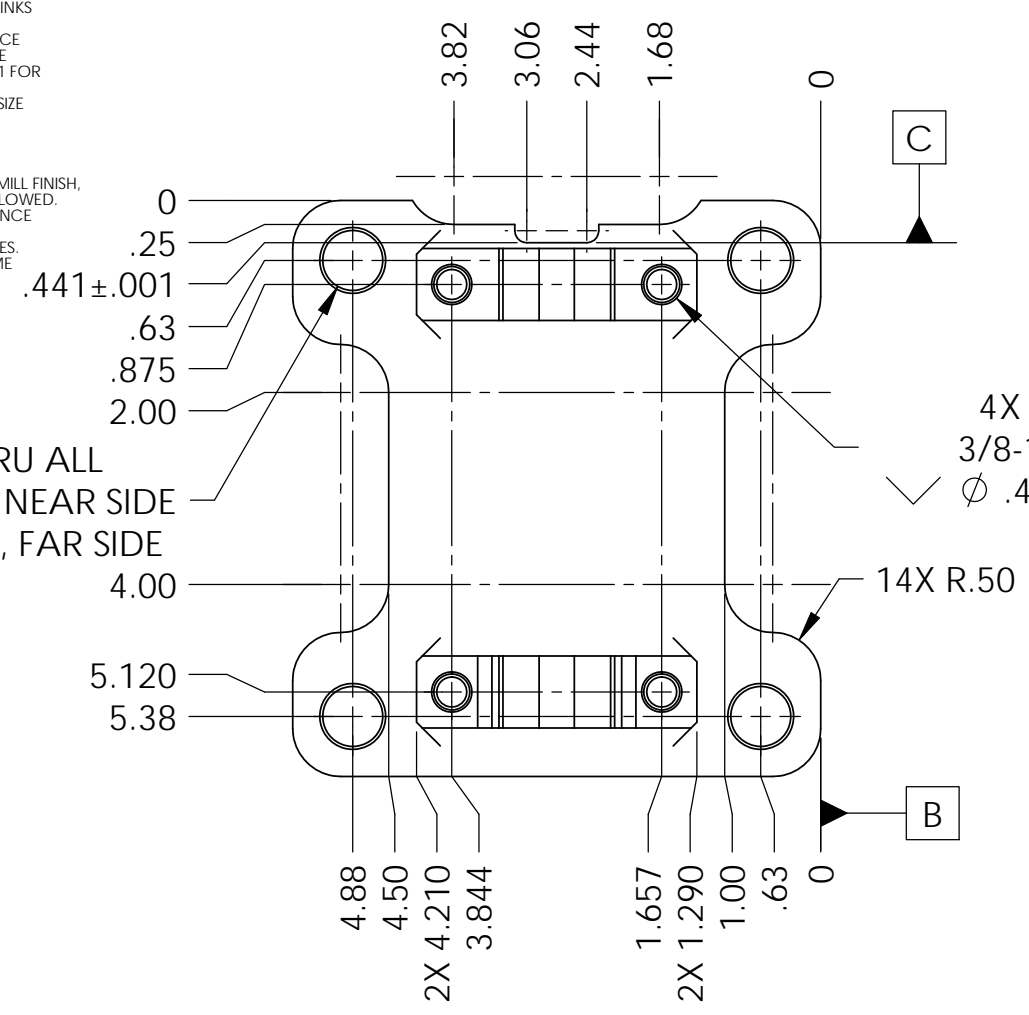


D1000873 Post, Stage 1-2 Locker, aLIGO BSC-ISI, PART PDM REV: X-005, DRAWING PDM REV: X-003

NOTES CONTINUED:
 5. SCRIBE, ENGRAVE, OR MECHANICALLY STAMP (NO INKS OR DYES) DRAWING PART NUMBER, REVISION (AND VARIANT OR "TYPE" IF APPLICABLE ON NOTED SURFACE OF PART FOLLOWED ON THE NEXT LINE WITH A THREE DIGIT SERIAL NUMBER. SERIAL NUMBERS START AT 001 FOR THE FIRST ARTICLE AND PROCEED CONSECUTIVELY. USE MINIMUM 0.12 HIGH CHARACTERS, UNLESS THE SIZE OF THE PART DICTATES SMALLER CHARACTERS. A VIBRATORY TOOL MAY BE USED.
 EXAMPLE DXXXXXX-VY, TYPE-XX, S/N XXX.
 6. APPROXIMATE WEIGHT = 3.8 LB.
 7. MACHINE ALL SURFACES TO REMOVE OXIDES AND MILL FINISH. USE OF ABRASIVE REMOVAL TECHNIQUES IS NOT ALLOWED.
 8. ALL PARTS SHALL BE MANUFACTURED IN ACCORDANCE WITH LIGO SPECIFICATION E0900364.
 9. A TAPPED HOLE PITCH DIAMETER LIMIT OF H11 APPLIES.
 10. A TRUE POSITION TOLERANCE OF ϕ 010 IS - THE SAME AS A CONVENTIONAL TOLERANCE OF \pm .005.

REV.	DATE	DCN #	DRAWING TREE #
v1	01 Mar. 2010	E1000115	E1000025



NOTES AND TOLERANCES: (UNLESS OTHERWISE SPECIFIED)				LIGO		CALIFORNIA INSTITUTE OF TECHNOLOGY MASSACHUSETTS INSTITUTE OF TECHNOLOGY		PART NAME POST, STAGE 1-2 LOCKER, aLIGO BSC-ISI							
DIMENSIONS ARE IN INCHES				1. INTERPRET DRAWING PER ASME Y14.5-1994.		SYSTEM		SUB-SYSTEM		DESIGNER	A.STEIN	01 Mar. 2010	SIZE	DWG. NO.	REV.
TOLERANCES: .XX ± .015 .XXX ± .005				2. REMOVE ALL SHARP EDGES, R.02 MIN.		ADVANCED LIGO		SEI		DRAFTER	M.HILLARD	01 Mar. 2010	B	D1000873	v1
ANGULAR ± .5°				3. DO NOT SCALE FROM DRAWING.		NEXT ASSY		D1000855		CHECKER	F.MATICHARD	01 Mar. 2010			
MATERIAL				FINISH		2024-T351 Al		63 µinch		APPROVAL	K.MASON	01 Mar. 2010			