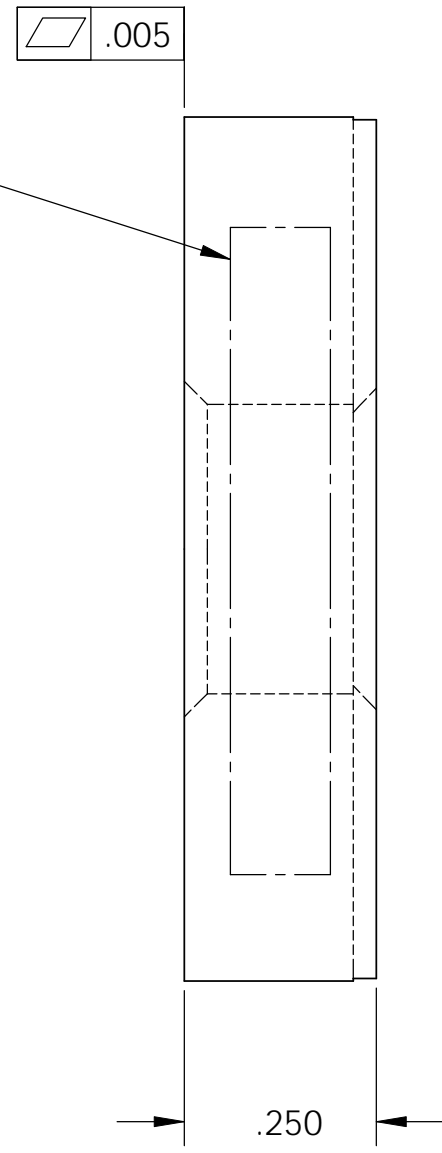
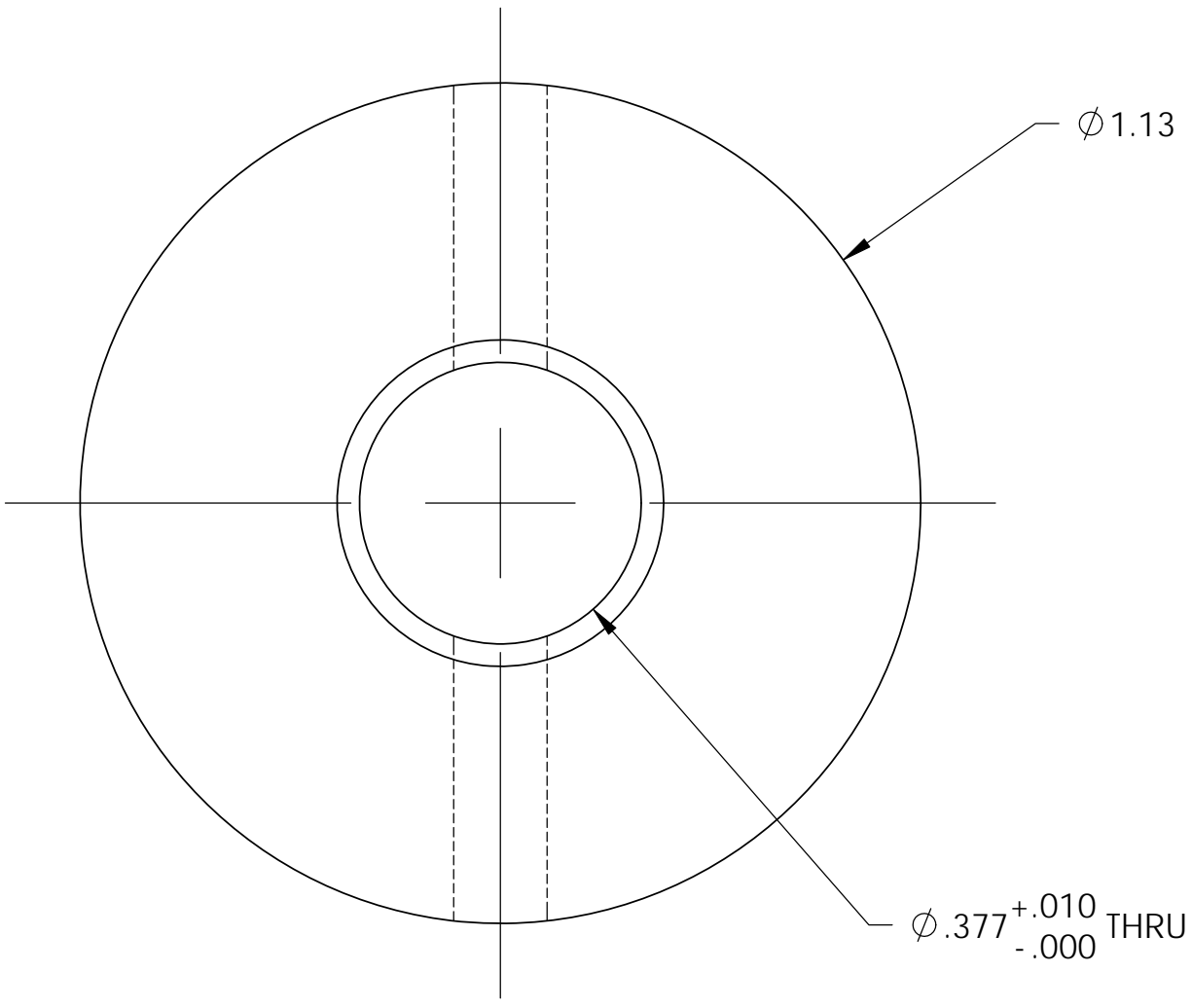
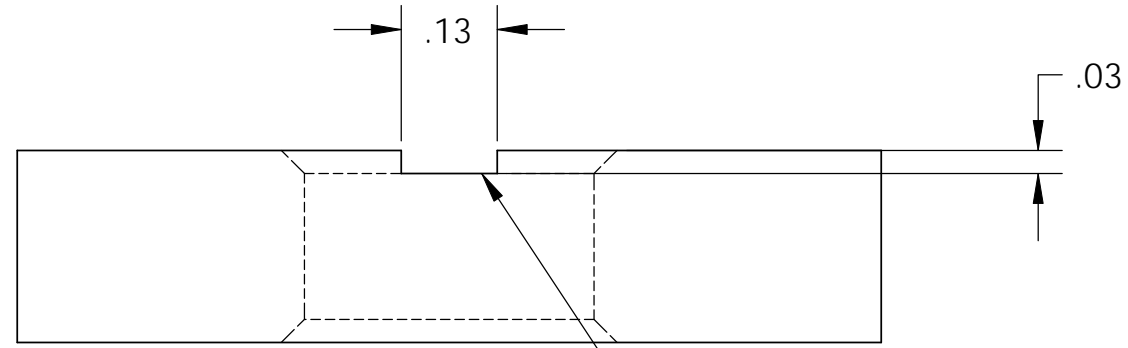


8 7 6 5 4 3 2 1

NOTES CONTINUED:
 (5) SCRIBE, ENGRAVE, OR MECHANICALLY STAMP (NO INKS OR DYES) DRAWING PART NUMBER, REVISION (AND VARIANT OR "TYPE" IF APPLICABLE ON NOTED SURFACE OF PART FOLLOWED ON THE NEXT LINE WITH A THREE DIGIT SERIAL NUMBER. SERIAL NUMBERS START AT 001 FOR THE FIRST ARTICLE AND PROCEED CONSECUTIVELY. USE MINIMUM 0.12 HIGH CHARACTERS, UNLESS THE SIZE OF THE PART DICTATES SMALLER CHARACTERS. A VIBRATORY TOOL MAY BE USED.
 EXAMPLE DXXXXXX-VY, TYPE-XX, S/N XXX.
 6. APPROXIMATE WEIGHT = 0.063 LB.
 7. MACHINE ALL SURFACES TO REMOVE OXIDES AND MILL FINISH. USE OF ABRASIVE REMOVAL TECHNIQUES IS NOT ALLOWED.
 8. ALL PARTS SHALL BE MANUFACTURED IN ACCORDANCE WITH LIGO SPECIFICATION E0900364.

REV.	DATE	DCN #	DRAWING TREE #
v1	23 Dec. 2004		
v2	01 Mar. 2010	E1000115	E1000025



D047942 washer-adjustable foot, PART PDM REV: X-006, DRAWING PDM REV: X-003

D C B A

D C B A

NOTES AND TOLERANCES: (UNLESS OTHERWISE SPECIFIED)				LIGO CALIFORNIA INSTITUTE OF TECHNOLOGY MASSACHUSETTS INSTITUTE OF TECHNOLOGY		PART NAME					
DIMENSIONS ARE IN INCHES				ADVANCED LIGO		SUB-SYSTEM		WASHER ADJUSTABLE FOOT, aLIGO BSC ISI			
TOLERANCES: .XX ± .015 .XXX ± .005				SEI		DESIGNER	ASI	23 Dec. 2004	SIZE	DWG. NO.	REV.
ANGULAR ± .5°				MATERIAL		DRAFTER	M.HILLARD	01 Mar. 2010	B	D047942	v2
				FINISH		CHECKER	F.MATICHARD	01 Mar. 2010	SCALE: 4:1		
				63 μinch		APPROVAL	K.MASON	01 Mar. 2010	PROJECTION:		
				NEXT ASSY		D1000854, D1000855			SHEET 1 OF 1		

8 7 6 5 4 3 2 1