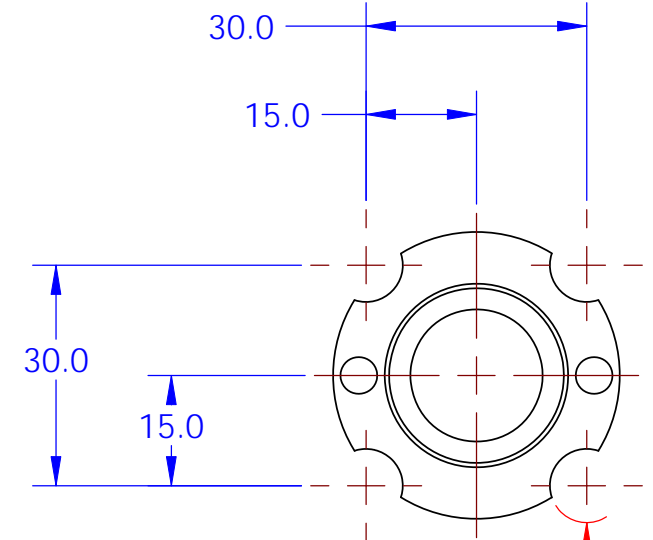
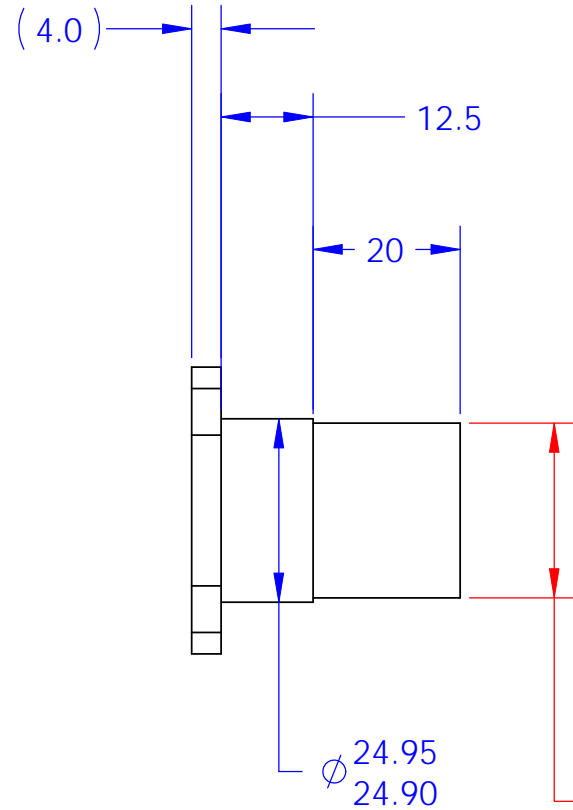
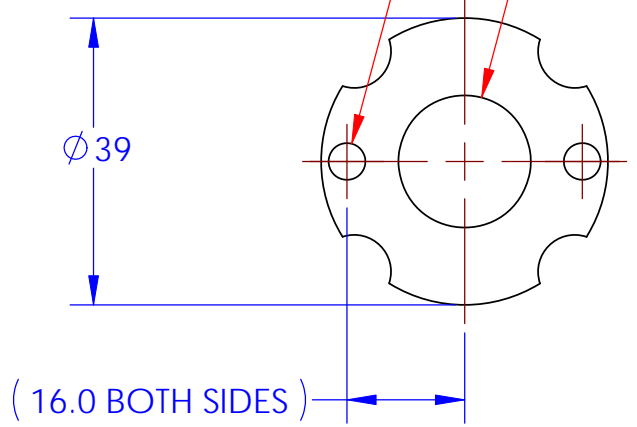


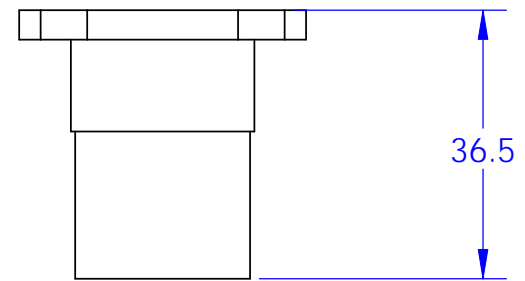
REV.	DATE	DCN #	DRAWING TREE #
00 (v1)	NOV07	INITIAL RELEASE (R.JONES)	
01(v2)	MAY08	ADD (4X)CLEARANCE RADII FOR LENS/CAGE ASSEMBLY (R.JONES)	
02 (v3)	FEB11	ALTER EXTERNAL THREAD FROM METRIC, TO IMPERIAL 15/16-12 FOR NEW ARTICULATED ARMS AT SITE. (R.JONES)	



2X, $\phi 5.0$ CLEAR THRU $\phi 18.0$ THRU



CUT EXTERNAL THREAD 15/16"-12 2A 4X, $\phi 12/10$

(16.0 BOTH SIDES)



NOTES: (UNLESS OTHERWISE SPECIFIED)		PARTS LIST	
1. DO NOT SCALE FROM DRAWING.	DIMENSIONS ARE IN MILLIMETERS	 CALIFORNIA INSTITUTE OF TECHNOLOGY MASSACHUSETTS INSTITUTE OF TECHNOLOGY IGR, GLASGOW UNIVERSITY GEO 600 GROUP	
2. REMOVE ALL SHARP EDGES, R.5 MIN.	TOLERANCES: .X ± 0.1 .XX ± 0.05		
	ANGULAR $\pm 0.2^\circ$		
	MATERIAL 6082-T6 Al		
	FINISH --		
		SYSTEM ADVANCED LIGO	
		SUB-SYSTEM SUS	
		NEXT ASSY CO2 Laser Machine	
		PART NAME Articulated Arm_Connector	
		SIZE B	DWG. NO. D080048
		SCALE: 1:1	PROJECTION:  SHEET 1 OF 1

8 7 6 5 4 3 2 1

D
C
B
A

D
C
B
A

8 7 6 5 4 3 2 1