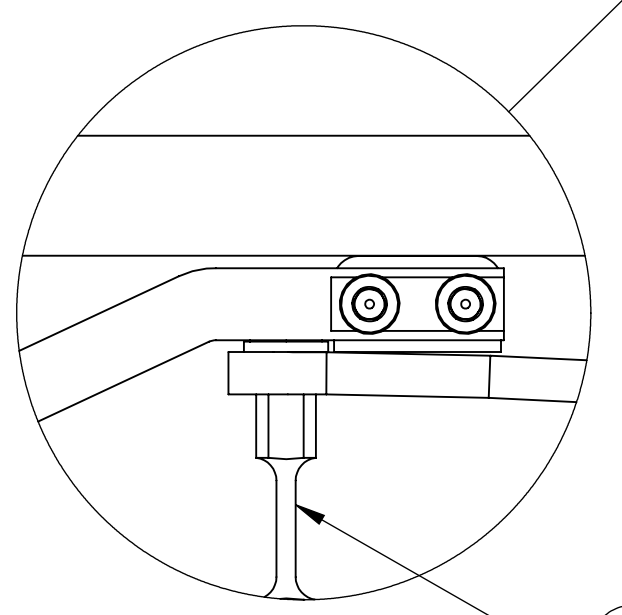
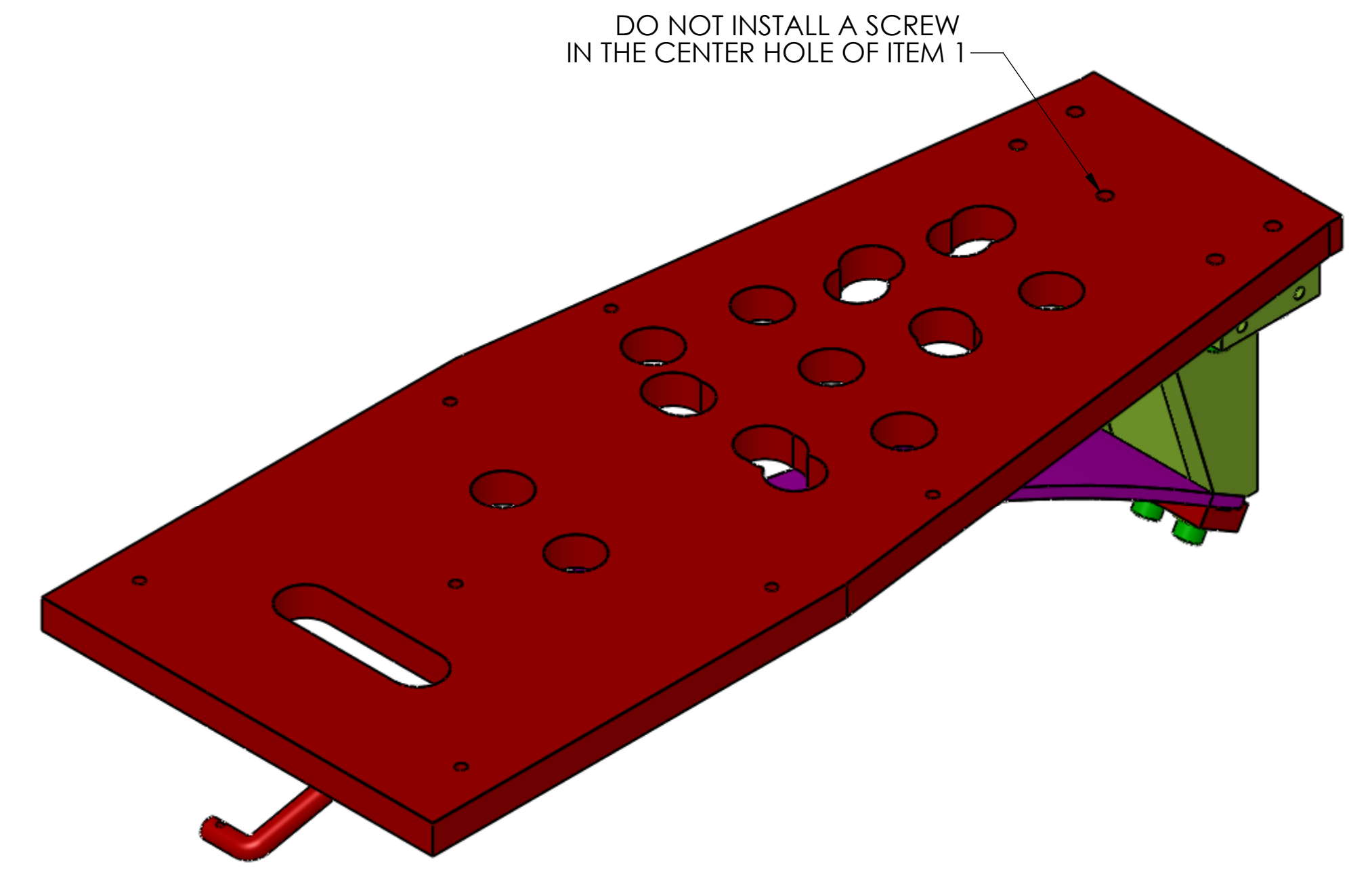
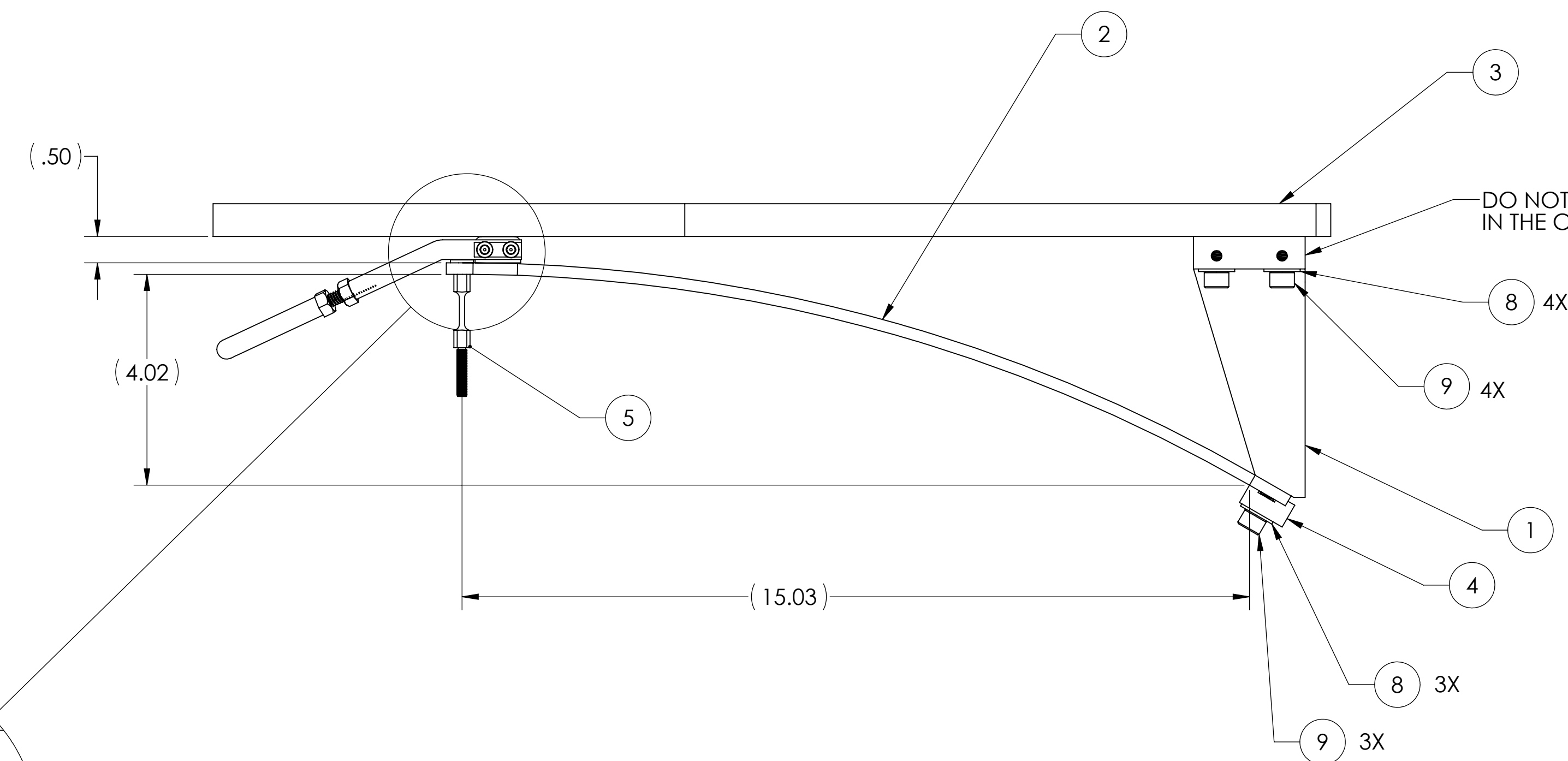


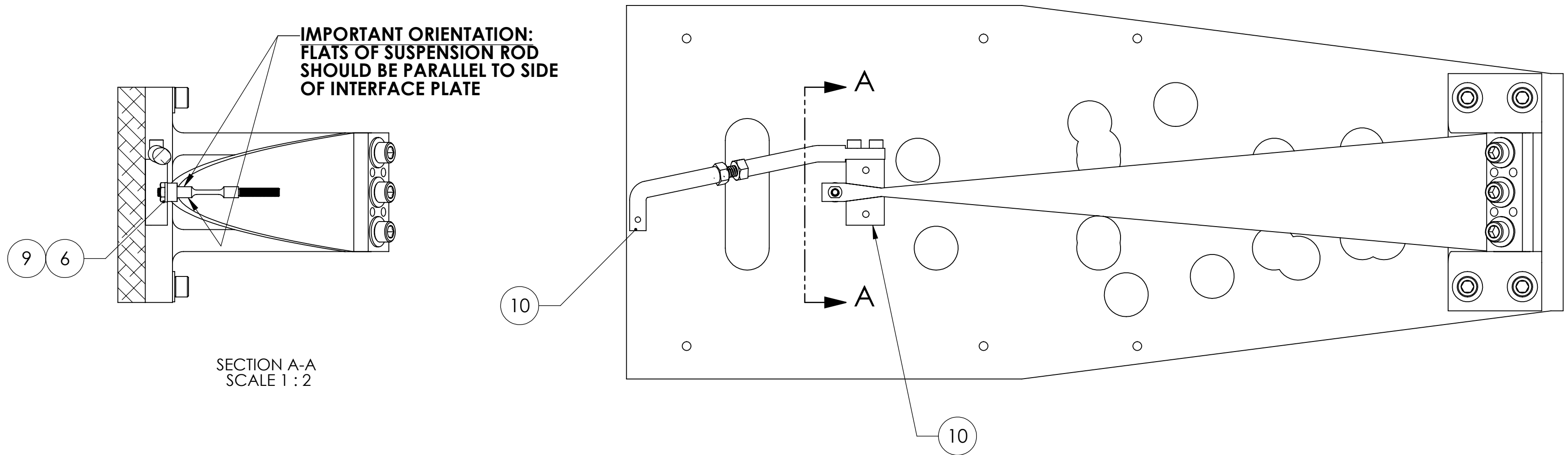
REV.	DATE	DCN #	DRAWING TREE #
v3	02 JUN 2010	E1100216	E1000640
v3	10 SEP 2011	E1100335	E1000640
v4	07 NOV. 2011	E1100335	E1000640



5 IMPORTANT TO LINE UP ITEM 5 (SLC ACB SUSPENSION ROD) WITH CENTER HOLE OF ITEM 3 (PLATE)

DETAIL A

IMPORTANT ORIENTATION: FLATS OF SUSPENSION ROD SHOULD BE PARALLEL TO SIDE OF INTERFACE PLATE



SECTION A-A
SCALE 1:2

ITEM NO.	PART NUMBER	DESCRIPTION	MATERIAL	DEFAULT/ALL PARTS/QTY.	SPARE
14	C-2014-A	SCREW, SOCKET HEAD CAP, 1/4-20 UNC-2A X 0.375 LONG, FULLY THREADED	18-8 SSSL	4	
13	D1101099	gLIGO ACB BEND FIXTURE	6061-T6 Al	1	
12	D1101298	BLADE SPRING BENDING HOOK ASSY	304 SSSL	1	
11	92200A242	SOCKET HEAD SCREW, #10-24 X .50 LG (MS16995-36)	300 SSSL	2	
10	D1102325	ACB BEND FIXTURE HOLDER ASSY	N/A	1	
9	C-1820-NA	U-C COMP. 5/16-18 X 1.25L, S.H.C.S.	Ag-PLATED 300 SSSL	7	
8	98019A385	.312 FLAT WASHER, .34 ID X .69 OD X .06 T, NASM 15795-812	300 SSSL	7	
7	N-1024-A	HEX NUT, #10-24, AG PLATED,(OR EQUIVALENT)	18-8 SSSL	1	
6	98019A330	WASHER #10, NASM 15795-808	300 SSSL	1	
5	D1002340	SLC ACB SUSPENSION ROD	316 SSSL	1	
4	D1002844	SLC ACB BLADE CLAMP	304 SSSL	1	
3	D1001138	SLC ACB INTERFACE MTG PLATE	304 SSSL	1	
2	D1002608	SLC ACB SUSPENSION BLADE	MARAGING STEEL C250	1	
1	D1002609	SLC BLADE MOUNTING BRACKET	304 SSSL	1	

NOTES AND TOLERANCES: (UNLESS OTHERWISE SPECIFIED)

DIMENSIONS ARE IN INCHES

TOLERANCES:
 .XX ± .03
 .XXX ± .010

ANGULAR ± 0.5°

MATERIAL	N/A	FINISH	N/A μinch
----------	-----	--------	-----------

LIGO CALIFORNIA INSTITUTE OF TECHNOLOGY
 MASSACHUSETTS INSTITUTE OF TECHNOLOGY

SYSTEM: ADVANCED LIGO SUB-SYSTEM: AOS

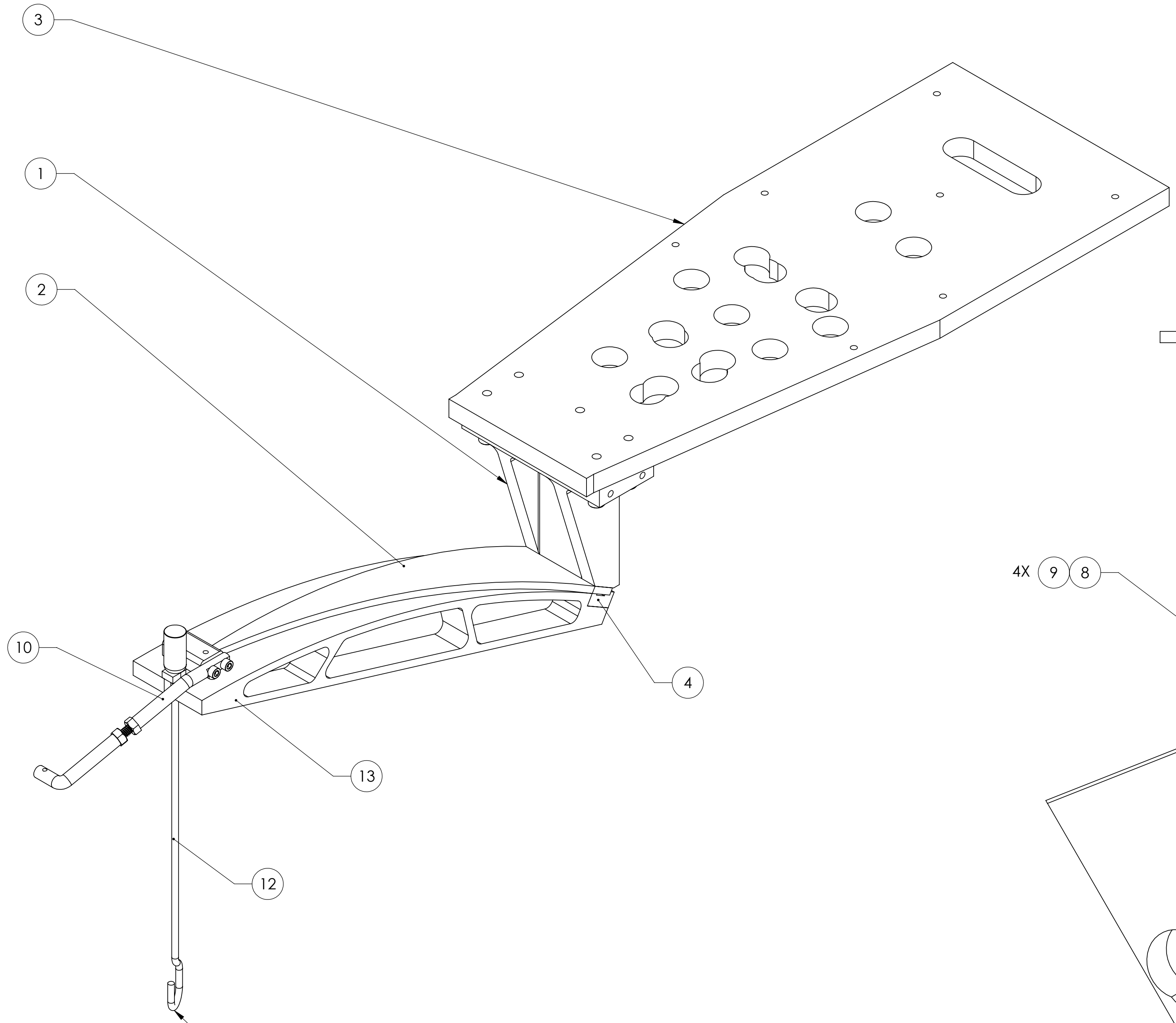
PART NAME: **ARM CAVITY BAFFLE BLADE ASSY**

DESIGNER	N.Nguyen	20 Aug 2010	SIZE	DWG. NO.	REV.
DRAFTER	TQ. NGUYEN	28 MAY 2010	D	D1001005	v4
CHECKER	M. SMITH	10 NOV 2010	SCALE: 1:1	PROJECTION:	SHEET 1 OF 2
APPROVAL	D. COYNE	20 NOV 2010			

D:\001_005_Adu\GO_AOS_SLC_ARM_Cavity_Baffle_Blade Assy_PART PDM REV: X.085.DRAWING PDM REV: X.036

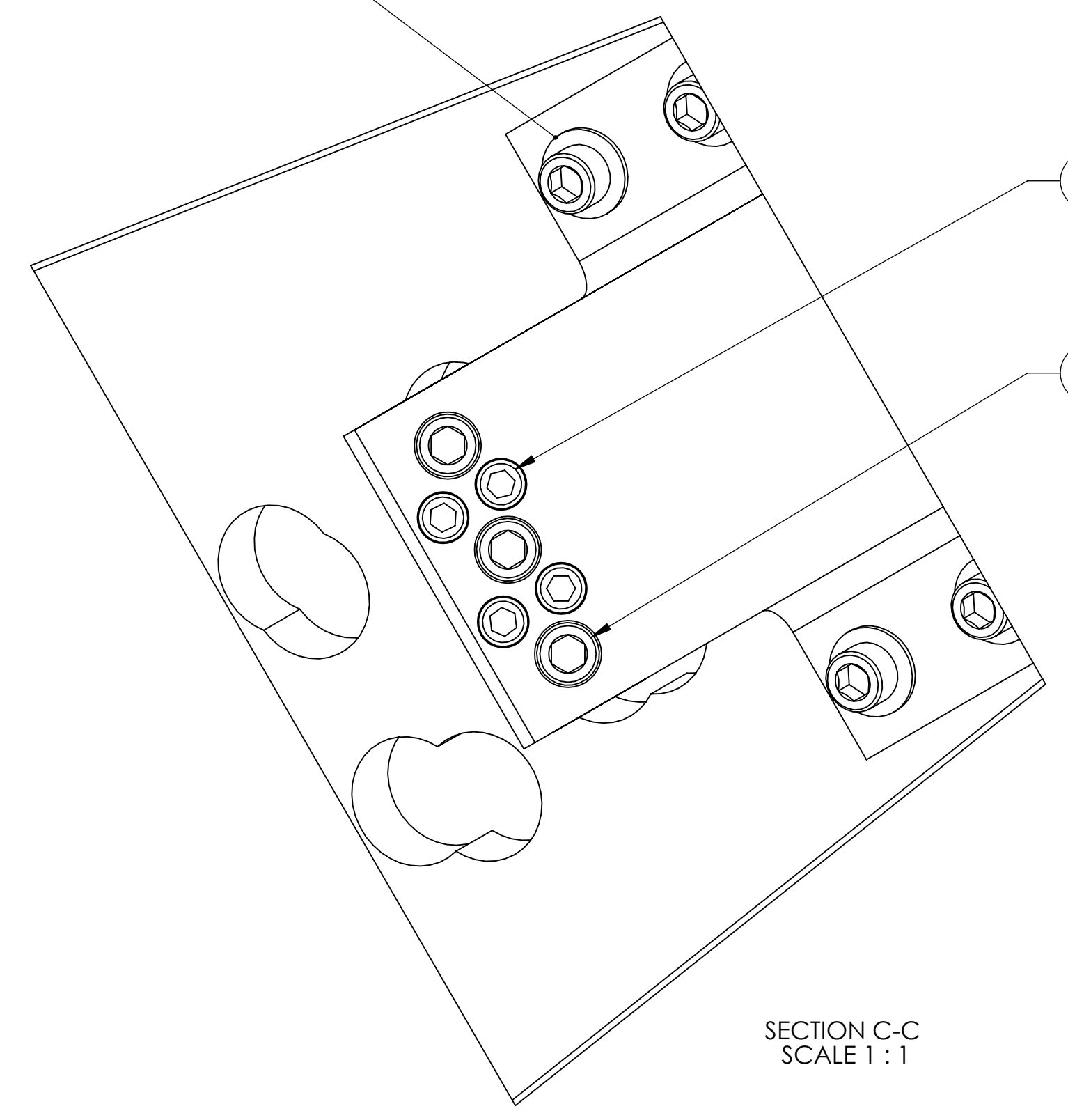
8 7 6 5 4 3 2 1

H G F E D C B A

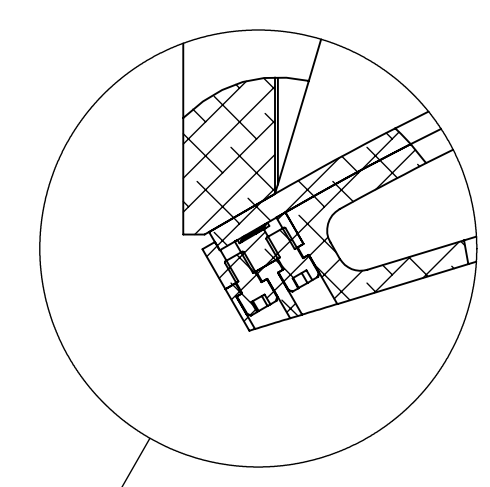


ADD WEIGHTS (~130 LB.) TO BEND SUSPENSION BLADE

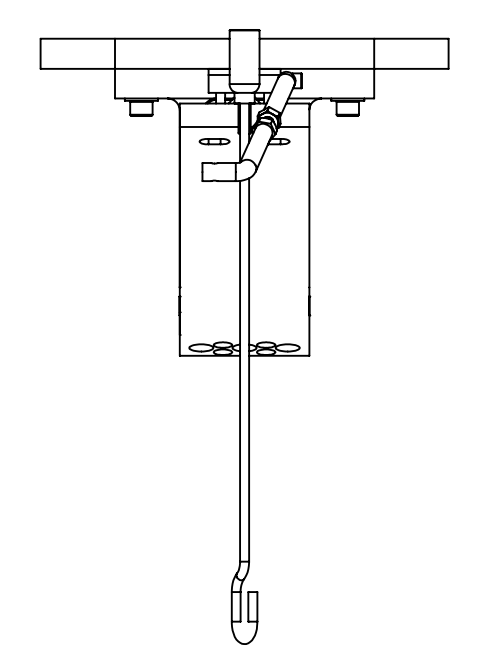
4X 9 8



SECTION C-C SCALE 1 : 1



DETAIL F SCALE 1 : 2



BLADE BENDING CONFIGURATION REFER TO E1100867 FOR DETAILS

LIGO CALIFORNIA INSTITUTE OF TECHNOLOGY MASSACHUSETTS INSTITUTE OF TECHNOLOGY		REV.
SIZE DWG. NO.	D1001005	v4
SCALE: 1:4	PROJECTION:	SHEET 2 OF 2

8 7 6 5 4 3 2 1

H G F E D C B A

D:\001_005_AduLIGO_AOS_SLC_ARM_Coily_Bottle_Blade Assy_PART PDM REV. X.085L DRAWING PDM REV. X.036