

8

7

6

5

4

3

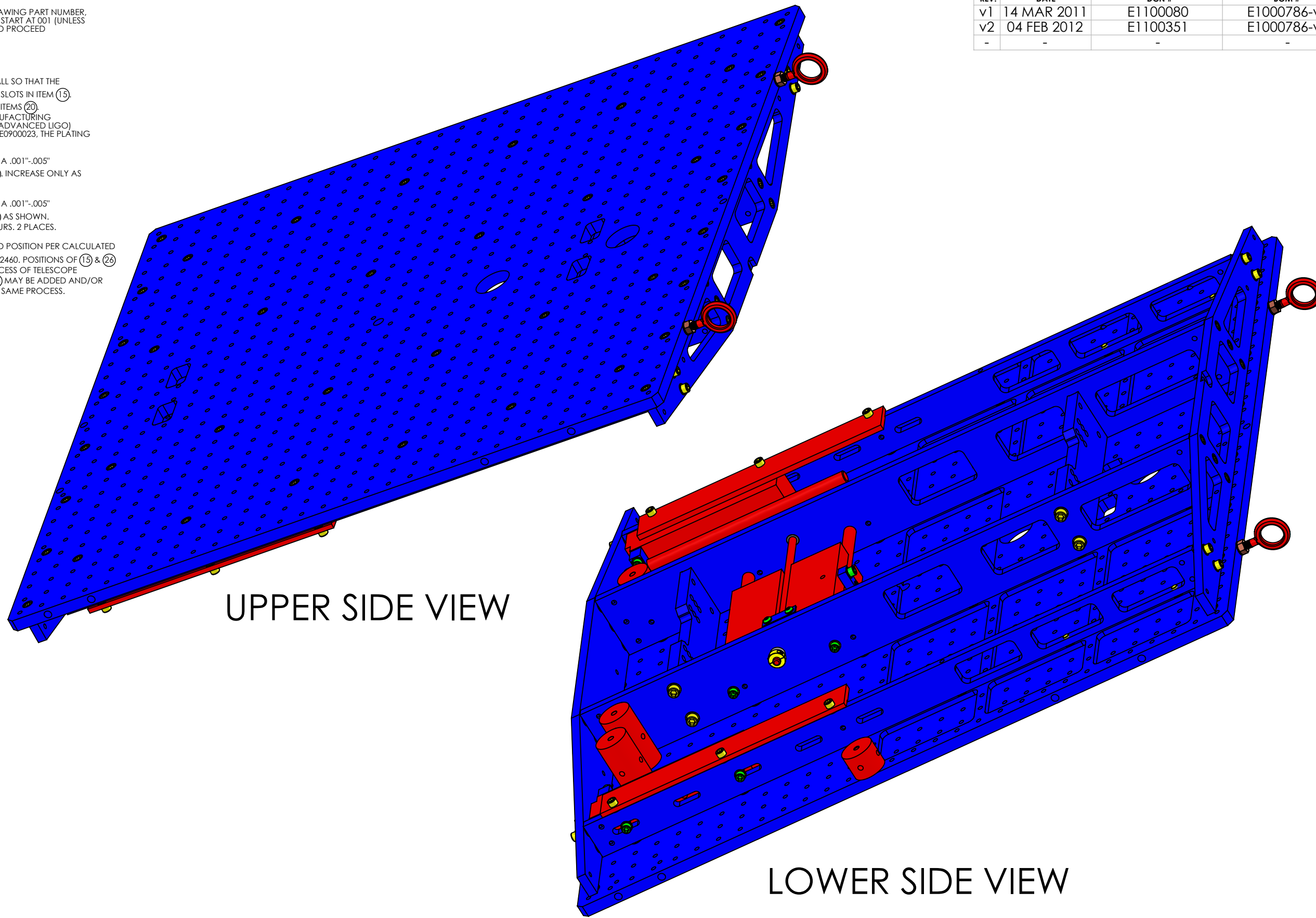
2

1

NOTES CONTINUED:

- 5. BAG AND TAG PARTS SEPARATELY WITH THEIR DRAWING PART NUMBER, REVISION, AND SERIAL NUMBER. SERIAL NUMBERS START AT 001 (UNLESS OTHERWISE SPECIFIED) FOR THE FIRST ARTICLE AND PROCEED CONSECUTIVELY.  
EXAMPLE:  
DXXXXXX-vY  
S/N-001
- 6. MASS: 79.552 LB [36.084 KG].
- 7. IF ITEMS (13) ARE MECHANICALLY MARKED, INSTALL SO THAT THE MARKINGS ARE TOWARD THE OPEN SIDES OF THE SLOTS IN ITEM (15).
- 8. LOW PHOSPHOROUS ELECTROLESS NICKEL PLATE ITEMS (20). ADHERE TO LIGO SPECIFICATION E0900023 (MANUFACTURING PROCESS FOR CANTELEVER SPRING BLADES FOR ADVANCED LIGO) SECTION 2.5.2. AS EXCEPTION TO SPECIFICATION E0900023, THE PLATING THICKNESS MAY BE .0003" MAX.
- 9. WITH ITEM (15) IN THE UNLOCKED CONDITION, SET A .001"-.005" CLEARANCE GAP BETWEEN ITEM (4) AND ITEM (21). INCREASE ONLY AS NECESSARY IF BINDING OCCURS.
- 10. WITH ITEM (26) IN THE UNLOCKED CONDITION, SET A .001"-.005" CLEARANCE GAP BETWEEN ITEM (4) AND ITEM (30) AS SHOWN. INCREASE ONLY AS NECESSARY IF BINDING OCCURS. 2 PLACES.
- 11. ITEMS (15), (26), (33), (35) ARE SHOWN IN SUGGESTED POSITION PER CALCULATED MASS PROPERTIES OF TELESCOPE ASSEMBLY D1002460. POSITIONS OF (15) & (26) WILL BE ADJUSTED DURING THE BALANCING PROCESS OF TELESCOPE ASSEMBLY D1002460. ALSO ITEMS (33) AND/OR (35) MAY BE ADDED AND/OR OMITTED AND/OR MOVED AS REQUIRED DURING SAME PROCESS.

REV.	DATE	DCN #	BOM #
v1	14 MAR 2011	E1100080	E1000786-v1
v2	04 FEB 2012	E1100351	E1000786-v2
-	-	-	-



UPPER SIDE VIEW

LOWER SIDE VIEW

D1001160.dLIGO OPTICS TABLE TOP STRUCTURAL ASSEMBLY.dgsm, PART PDM REV: X-587, DRAWING PDM REV: X-177

DIMENSIONS ARE IN INCHES		TOLERANCES:		ANGULAR ± 1.0°		NOTES AND TOLERANCES: (UNLESS OTHERWISE SPECIFIED)		MATERIAL		FINISH		SYSTEM		SUB-SYSTEM		NEXT ASSY		PART NAME		DESIGNER		DRAFTER		CHECKER		APPROVAL		SIZE		DWG. NO.		REV.	
.XX ± .01		.XXX ± .005				1. INTERPRET DRAWING PER ASME Y14.5-1994. 2. REMOVE ALL SHARP EDGES, R.02 MIN. 3. DO NOT SCALE FROM DRAWING. 4. ALL MACHINING FLUIDS MUST BE FULLY SYNTHETIC, FULLY WATER SOLUBLE AND FREE OF SULFUR, SILICONE, AND CHLORINE.		N/A		N/A		ADVANCED LIGO		AOS		D1000484		aLIGO OPTICS TABLE TOP STRUCTURAL ASSEMBLY		K. MAILAND		C. CONLEY		SEE DCN		SEE DCN		B		D1001160		v2	
												CALIFORNIA INSTITUTE OF TECHNOLOGY MASSACHUSETTS INSTITUTE OF TECHNOLOGY								10/08/2010		14 MAR 2011				SCALE: NONE		PROJECTION:		SHEET 1 OF 6			

8

7

6

5

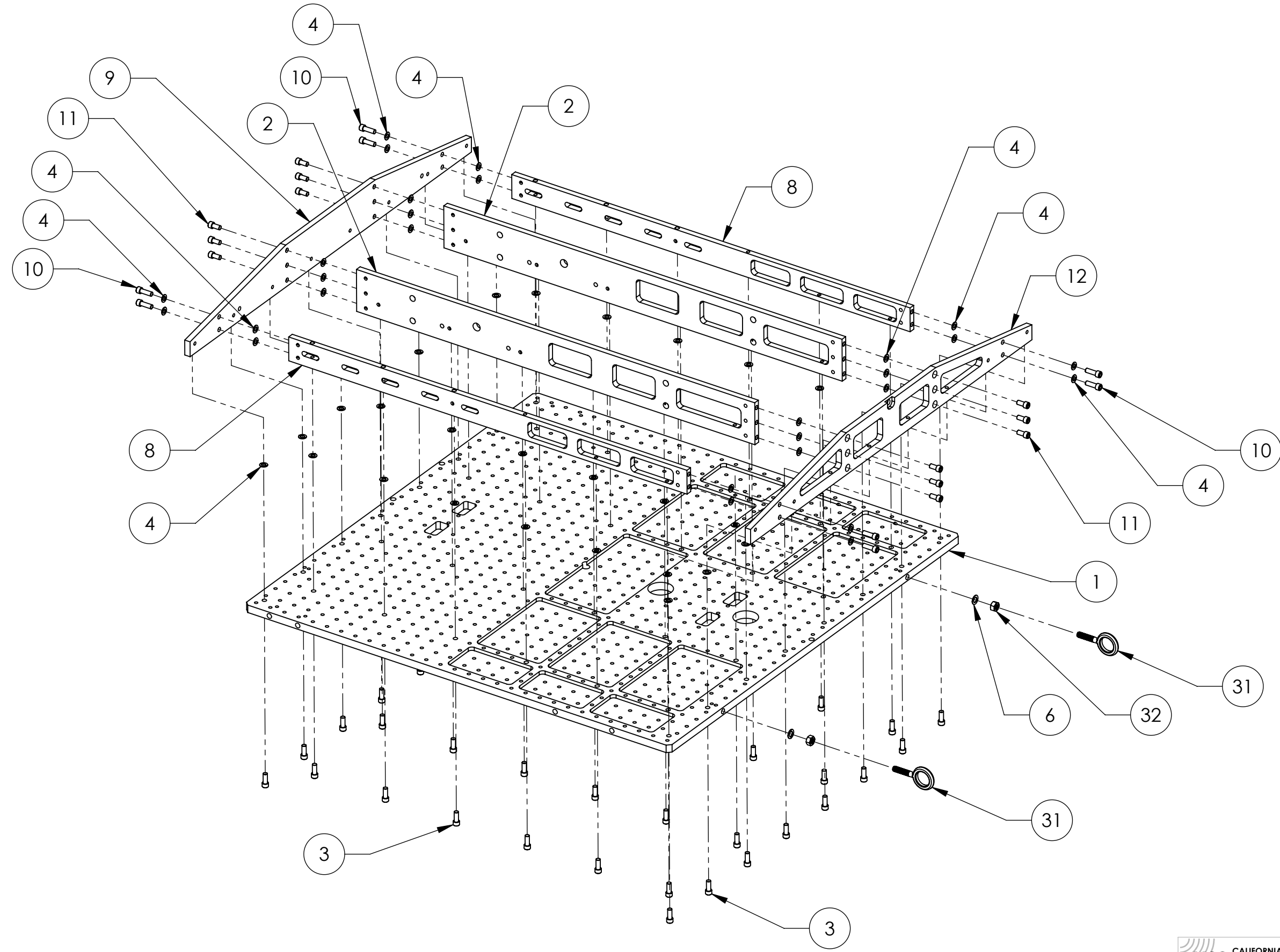
4

3

2

1

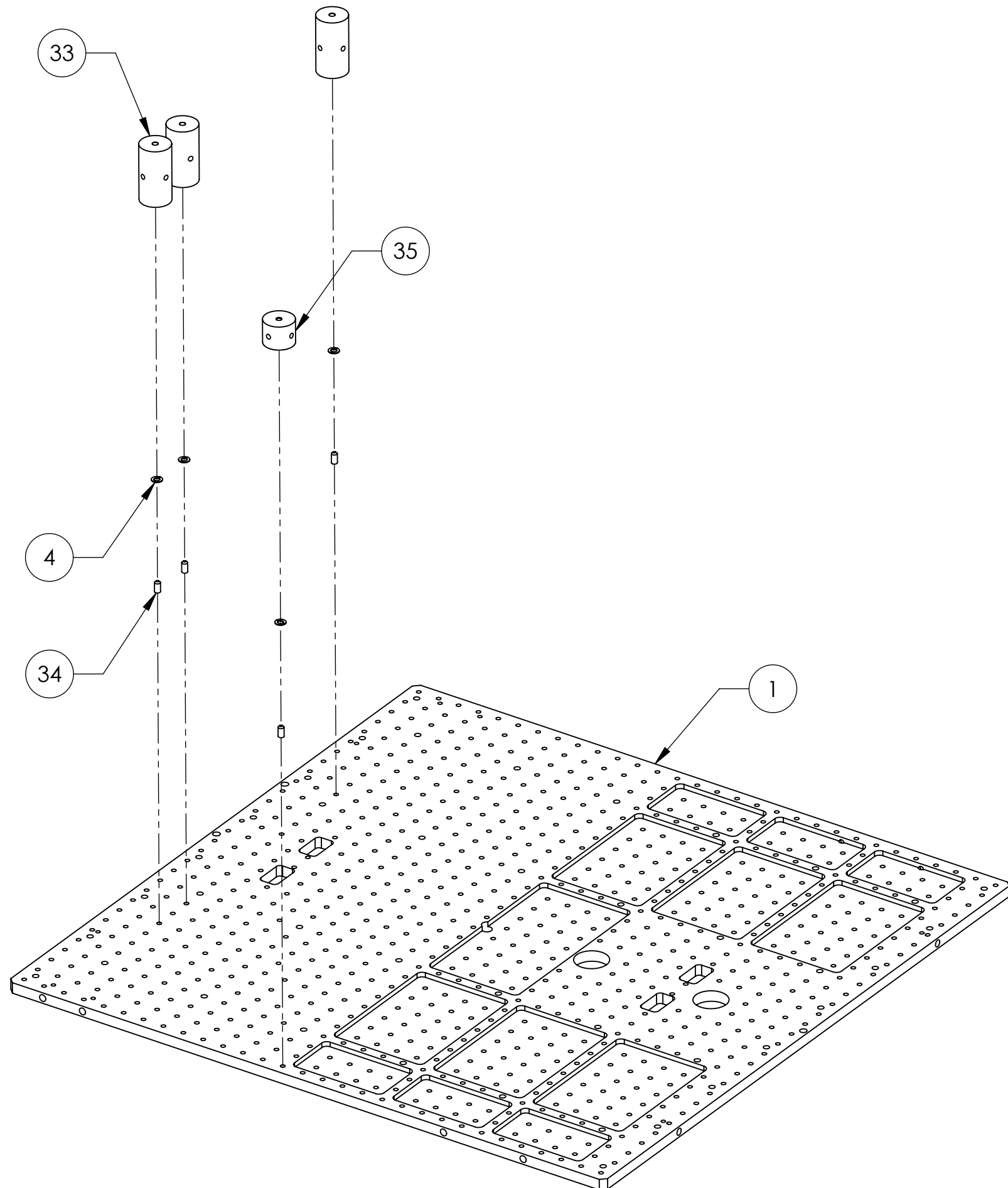
D1001160.dwg LIGO OPTICS TABLE TOP STRUCTURAL ASSEMBLY.sldasm, PART PDM REV: X-587, DRAWING PDM REV: X-177



**LIGO** CALIFORNIA INSTITUTE OF TECHNOLOGY  
 MASSACHUSETTS INSTITUTE OF TECHNOLOGY

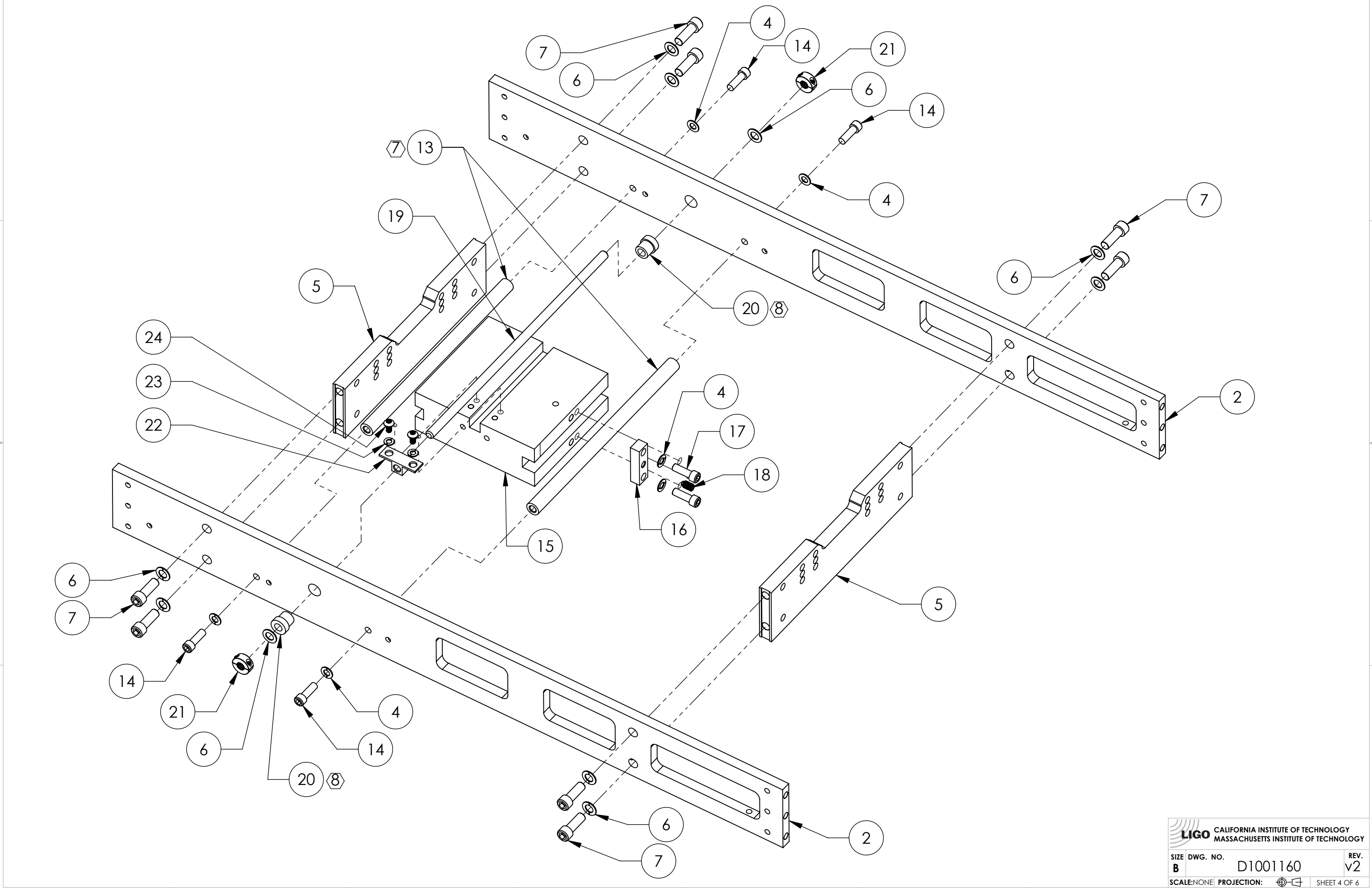
SIZE	DWG. NO.	REV.
B	D1001160	v2
SCALE: NONE		PROJECTION:
		SHEET 2 OF 6



D1001160.dLIGO OPTICS TABLE TOP STRUCTURAL ASSEMBLY.sldasm, PART PDM REV: X-587, DRAWING PDM REV: X-177



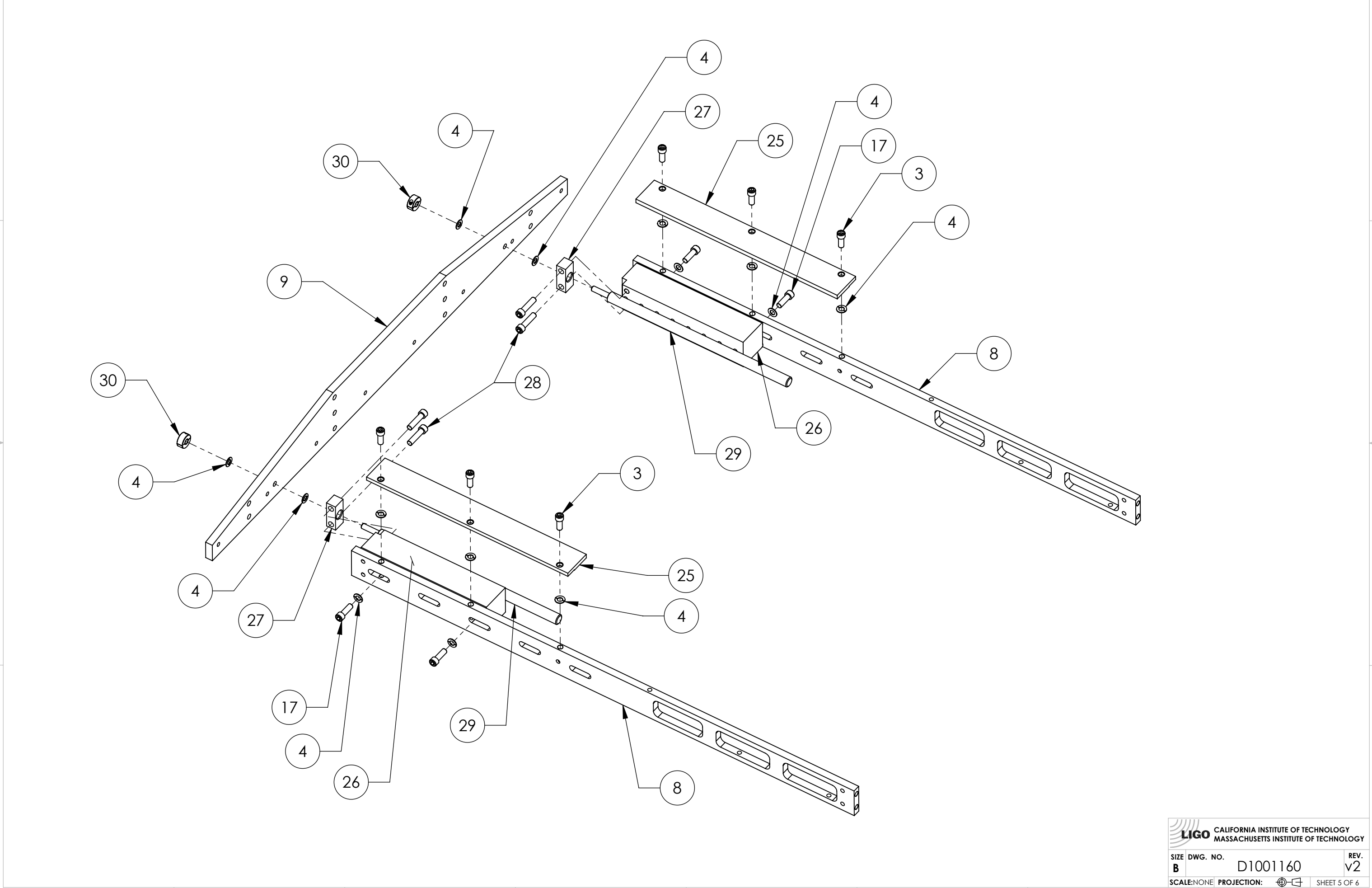
 <b>CALIFORNIA INSTITUTE OF TECHNOLOGY</b> <b>MASSACHUSETTS INSTITUTE OF TECHNOLOGY</b>		
SIZE	DWG. NO.	REV.
<b>B</b>	D1001160	v2
SCALE: NONE	PROJECTION:	SHEET 3 OF 6


D1001160.dwg LIGO OPTICS TABLE TOP STRUCTURAL ASSEMBLY.sldasm, PART PDM REV: X-587, DRAWING PDM REV: X-177



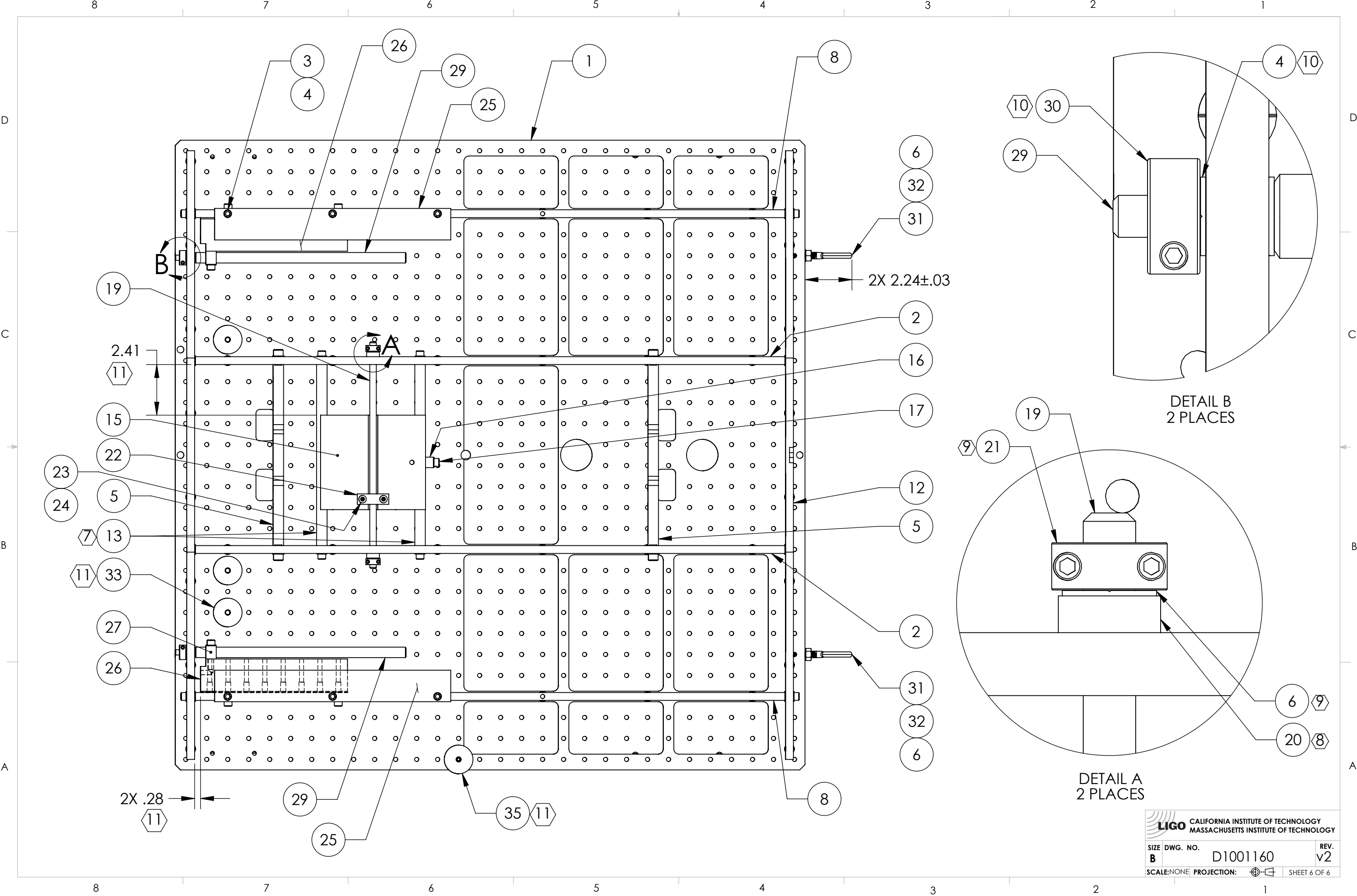
 CALIFORNIA INSTITUTE OF TECHNOLOGY MASSACHUSETTS INSTITUTE OF TECHNOLOGY	
SIZE DWG. NO.	REV.
<b>B</b> D1001160	v2
SCALE: NONE PROJECTION: 	SHEET 4 OF 6

D:\001160.dwg LIGO OPTICS TABLE TOP STRUCTURAL ASSEMBLY.sldasm, PART PDM REV: X-587, DRAWING PDM REV: X-177



 <b>CALIFORNIA INSTITUTE OF TECHNOLOGY</b> <b>MASSACHUSETTS INSTITUTE OF TECHNOLOGY</b>		
SIZE	DWG. NO.	REV.
B	D1001160	v2
SCALE: NONE	PROJECTION:	SHEET 5 OF 6

D1001160.dwg LIGO OPTICS TABLE TOP STRUCTURAL ASSEMBLY.dwgsm, PART PDM REV: X-587, DRAWING PDM REV: X-177



**LIGO** CALIFORNIA INSTITUTE OF TECHNOLOGY  
 MASSACHUSETTS INSTITUTE OF TECHNOLOGY

SIZE	DWG. NO.	REV.
B	D1001160	v2
SCALE: NONE	PROJECTION:	SHEET 6 OF 6