

8

7

6

5

4

3

2

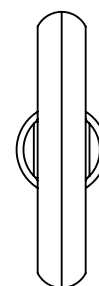
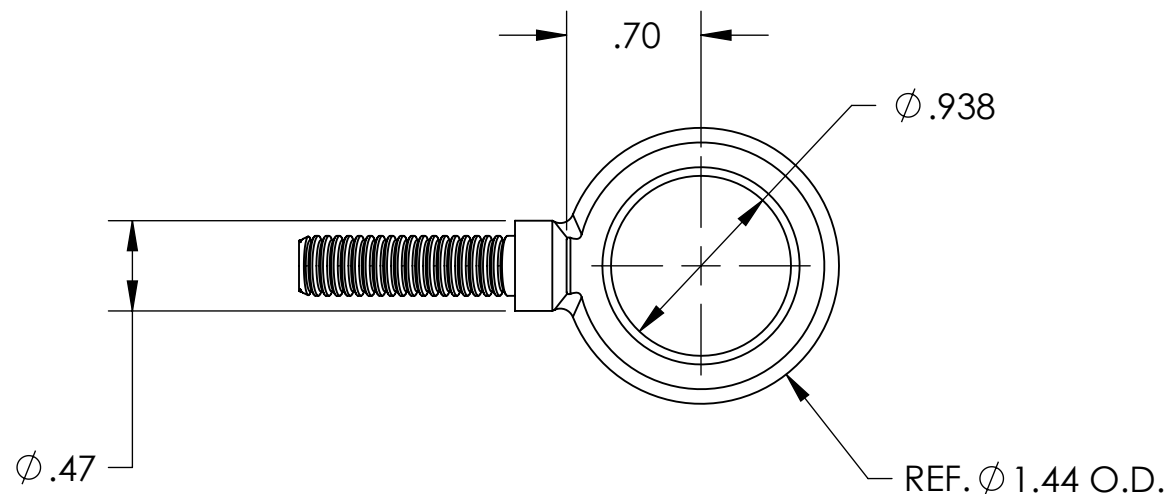
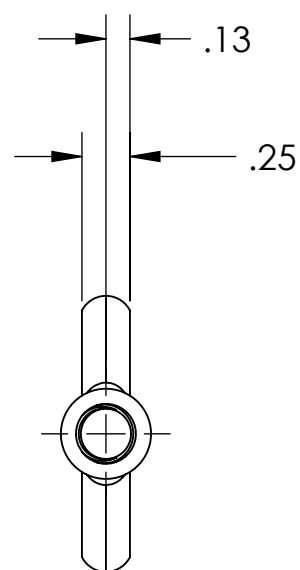
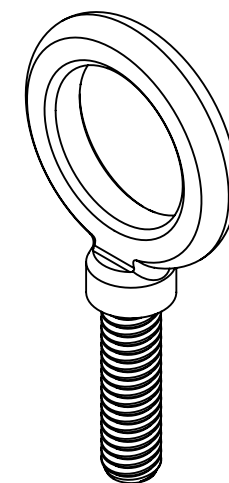
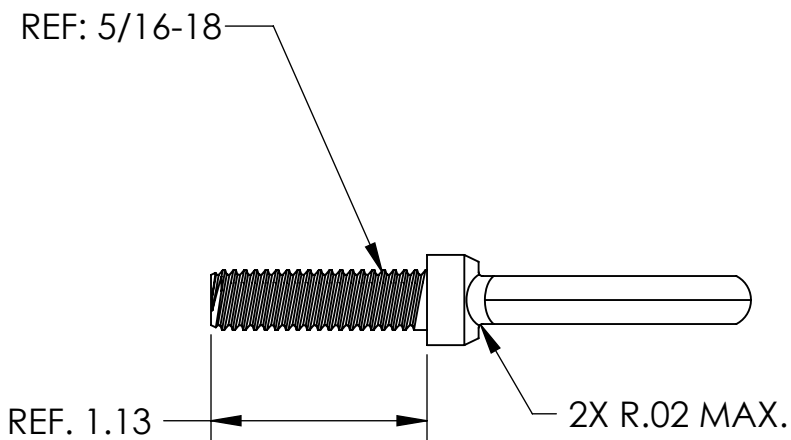
1

NOTES CONTINUED:

- 5. SCRIBE, ENGRAVE, OR MECHANICALLY STAMP (NO DYES OR INKS) A UNIQUE THREE DIGIT SERIAL NUMBER & REVISION NUMBER ON EACH PART. SERIAL NUMBERS START AT 001 FOR THE FIRST ARTICLE AND PROCEED CONSECUTIVELY. BAG AND TAG PARTS WITH THEIR DRAWING PART NUMBER, REVISION, VARIANT OR "TYPE" (IF APPLICABLE), AND QUANTITY. IF PARTS ARE TOO SMALL TO SCRIBE, BAGGING AND TAGGING ALONE IS SUFFICIENT.
EXAMPLE (PART): 001-v1
EXAMPLE (TAG): DXXXXXX-VY, TYPE-XX, QTY: TBD
- 6. APPROXIMATE WEIGHT = .09 LB [42.7 G].
- 7. MACHINE ALL SURFACES TO REMOVE OXIDES AND MILL FINISH. USE OF ABRASIVE REMOVAL TECHNIQUES IS NOT ALLOWED.
- 8. ALL PARTS SHALL BE MANUFACTURED IN ACCORDANCE WITH LIGO SPECIFICATION E0900364.
- 9. ALL MATERIAL IS TO BE VIRGIN MATERIAL (i.e. NOT WELD REPAIRS OR PLUGS UNLESS APPROVED IN ADVANCE IN WRITING BY LIGO, REFER TO LIGO-E0900364.
- 10. NO REPAIRS SHALL BE MADE UNLESS APPROVED IN ADVANCE, AND IN WRITING, BY LIGO LABORATORY. IN GENERAL WELD REPAIRS AND PRESS FIT INSERT REPAIRS ARE NEVER ACCEPTABLE. THE MATERIAL SHOULD BE MADE WITH VIRGIN MATERIAL. SPECIAL CIRCUMSTANCES CAN BE REVIEWED IF / WHEN BROUGHT TO THE ATTENTION OF LIGO CONTRACTING OFFICER'S REPRESENTATIVE (COTR) THROUGH A MATERIAL REVIEW BOARD (MRB) PROCESS, REFER TO LIGO-E0900364.

(11) FINISH APPLIES TO MODIFICATIOIS ONLY.

REV.	DATE	DCN #	DRAWING TREE #
v1	22 DEC 2010	E100762-v1	-
-	-	-	-
-	-	-	-



MODIFY REF: MACMASTER-CARR PART# 33045T78

NOTES AND TOLERANCES: (UNLESS OTHERWISE SPECIFIED)				LIGO CALIFORNIA INSTITUTE OF TECHNOLOGY MASSACHUSETTS INSTITUTE OF TECHNOLOGY		PART NAME	
DIMENSIONS ARE IN INCHES				ADVANCED LIGO		aLIGO_OPTICS_TABLE_TOP_MODIFIED_EYEBOLT	
TOLERANCES: .XX ± .01 .XXX ± .005				SUB-SYSTEM AOS		DESIGNER K. MAILAND 12/10/2010	SIZE DWG. NO. B
ANGULAR ± 1.0°				NEXT ASSY D1001160		DRAFTER M. MILLER 12/16/2010	REV. v1
MATERIAL 304 SSTL				FINISH 63 μinch Ra (11)		CHECKER	SCALE: 1:1
						APPROVAL	PROJECTION:
						SHEET 1 OF 1	

D1001161 aLIGO OPTICS TABLE TOP MODIFIED EYEBOLT, PART PDM REV: X-020, DRAWING PDM REV: X-015

8

7

6

5

4

3

2

1