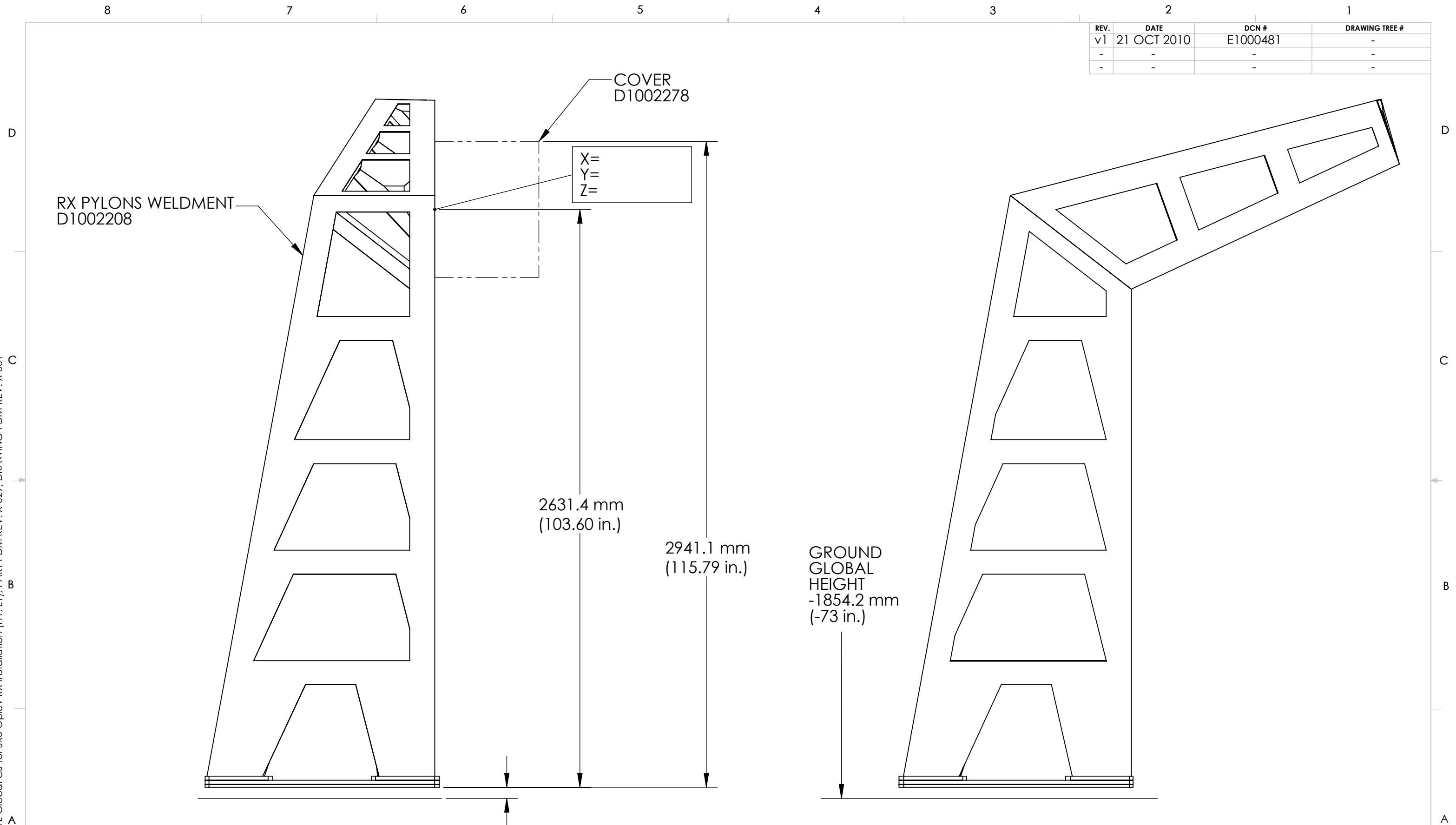


D1001170 aLIGO AOS XYZ Global CS for SR3 Oplev RX Installation (H1, L1), PART PDM REV: X-029, DRAWING PDM REV: X-001

REV.	DATE	DCN #	DRAWING TREE #
v1	21 OCT 2010	E1000481	-
-	-	-	-
-	-	-	-



RIGHT HANDED GIRAFFE

NOTES AND TOLERANCES: (UNLESS OTHERWISE SPECIFIED)				LIGO CALIFORNIA INSTITUTE OF TECHNOLOGY MASSACHUSETTS INSTITUTE OF TECHNOLOGY		PART NAME	
DIMENSIONS ARE IN INCHES TOLERANCES: .XX ± .01 .XXX ± .005 ANGULAR ± 1.0°				1. INTERPRET DRAWING PER ASME Y14.5-1994. 2. REMOVE ALL SHARP EDGES, R.02 MIN. 3. DO NOT SCALE FROM DRAWING. 4. ALL MACHINING FLUIDS MUST BE FULLY SYNTHETIC, FULLY WATER SOLUBLE AND FREE OF SULFUR, SILICONE, AND CHLORINE.		DESIGNER C. CONLEY 23 FEB 2010	
						DRAFTER N. KILPATRICK 21 OCT 2010	
MATERIAL N/A				FINISH N/A μinch		SUB-SYSTEM AOS	
NEXT ASSY D1000420				SYSTEM ADVANCED LIGO		SIZE DWG. NO. B D1001170	
						CHECKER	
						APPROVAL	
						SCALE: 1:16 PROJECTION: SHEET 1 OF 1	

8 7 6 5 4 3 2 1