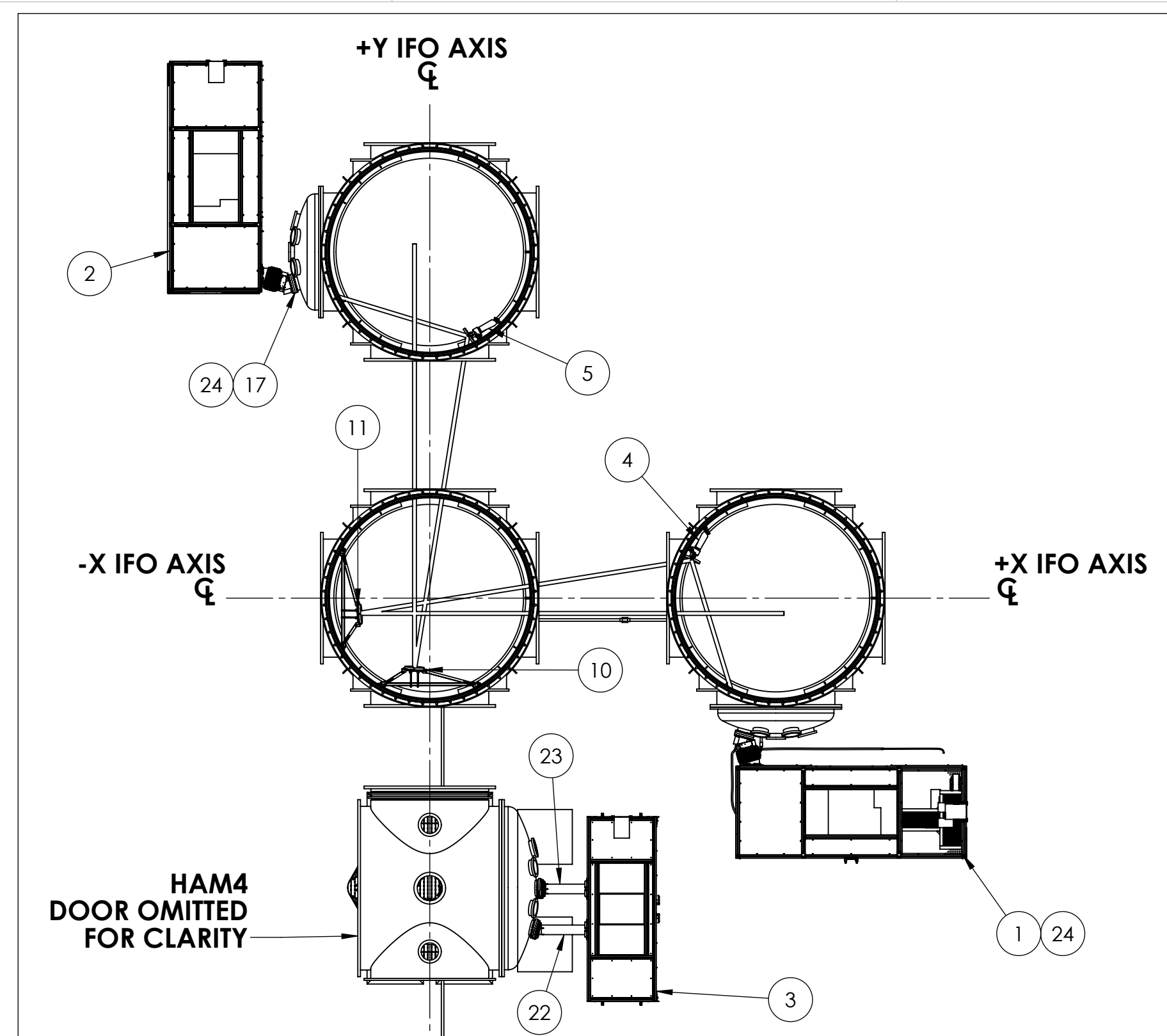
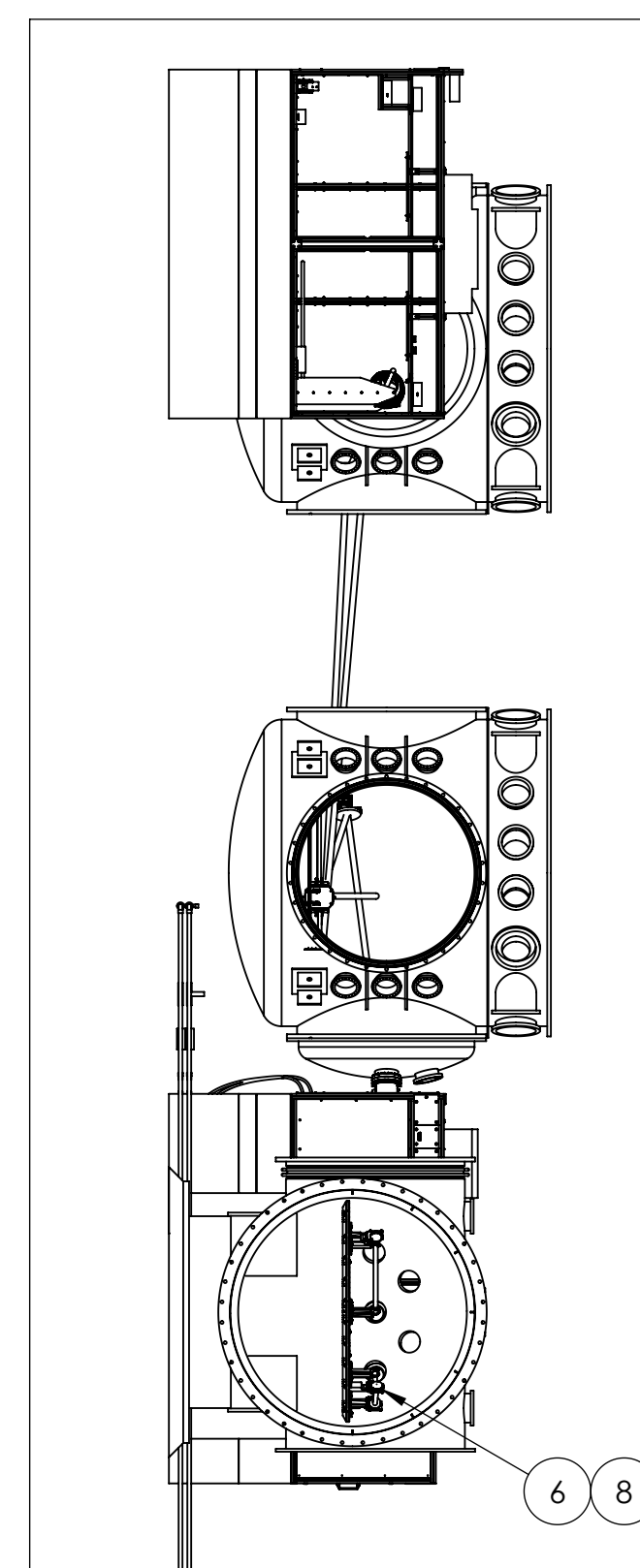


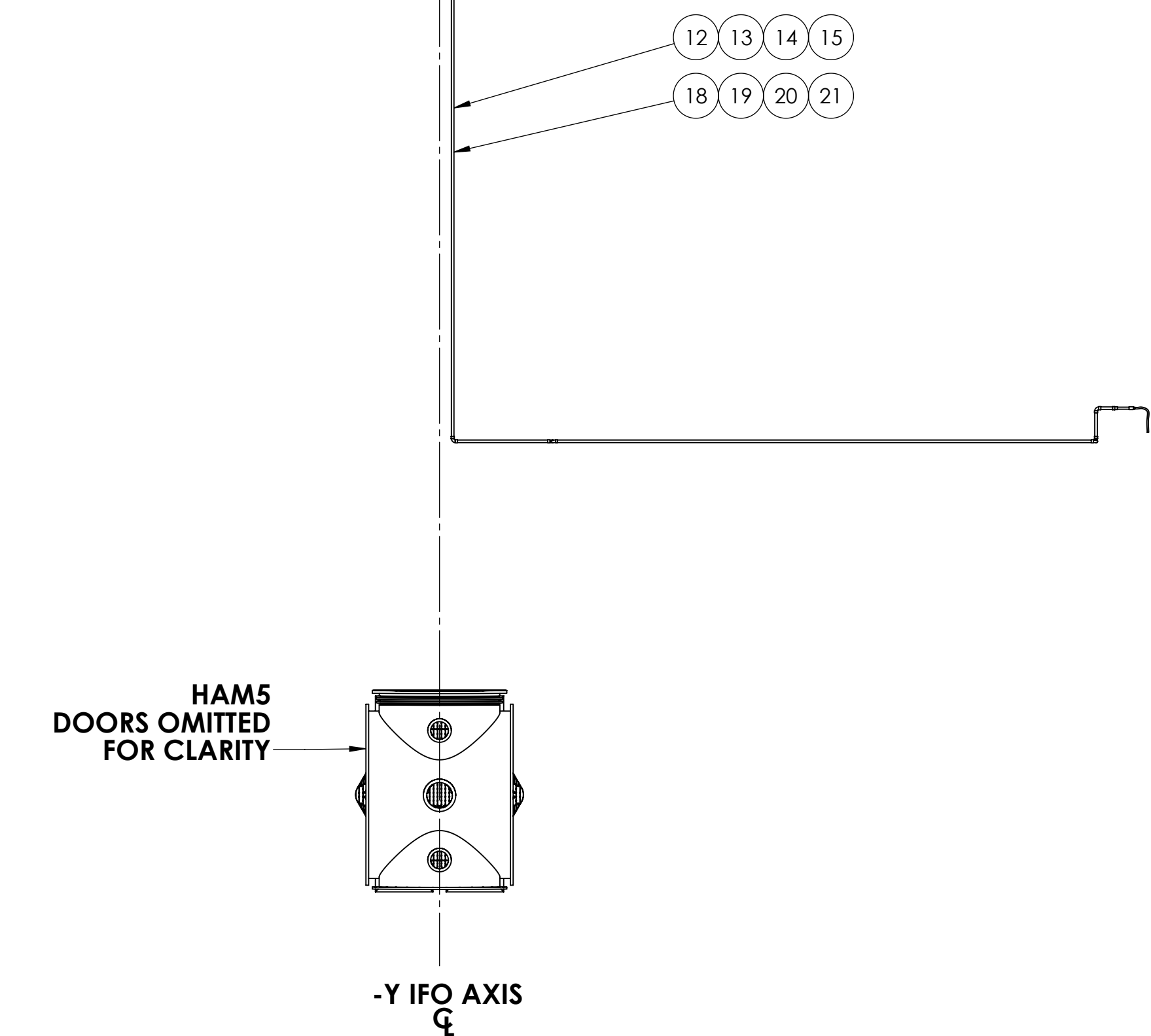
REV.	DATE	DCN #	DRAWING TREE #
v1	19-JUL-2011		
v6	25 MAR 2016	E1600078-x0	-



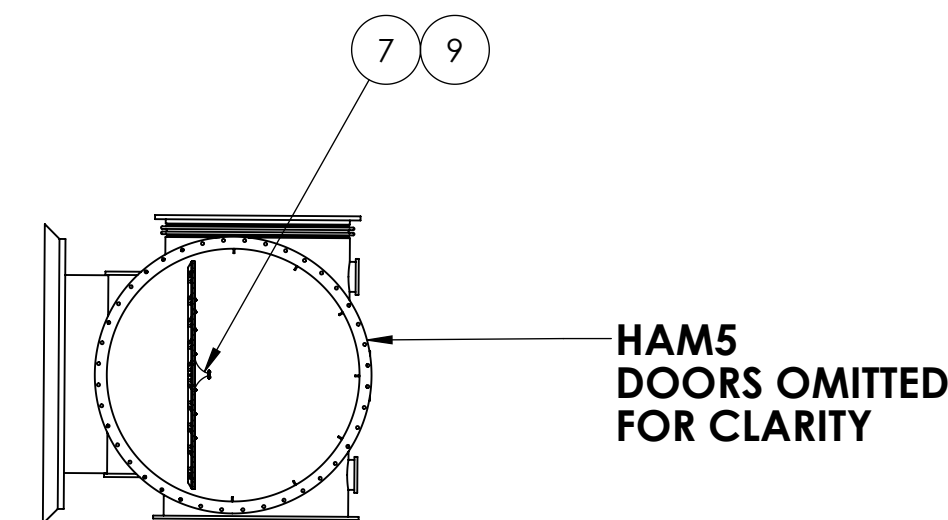
SHEET 2  
SCALE 1:30



SHEET 2  
SCALE 1:30



SIDE VIEW  
BEAM TUBES OMITTED FOR CLARITY



ITEM NO.	PART NUMBER	DESCRIPTION	MATERIAL	LLO DEFAULT/QTY.	LHO DEFAULT/QTY.
24	D1600127	αLIGO, TCS CO2P, VP ENCLOSURE TO TABLE ADAPTER INTERFACE ASSY.	MULTI	1	1
23	D1102397	αLIGO TCS HAM4 HWS-Y VIEWPORT AND BEAM ENCLOSURE ASSEMBLY	MULTI	1	1
22	D1102389	αLIGO TCS HAM4 HWS-X VIEWPORT AND BEAM ENCLOSURE ASSEMBLY	MULTI	1	1
21	D1300617-112	LHO PLUMBING LAYOUT, αLIGO TCS CO2P, Y-ARM RETURN	PVC, SSSL	0	1
20	D1300617-102	LHO PLUMBING LAYOUT, αLIGO TCS CO2P, Y-ARM SUPPLY	PVC, SSSL	0	1
19	D1300617-111	LHO PLUMBING LAYOUT, αLIGO TCS CO2P, X-ARM RETURN	PVC, SSSL	0	1
18	D1300617-101	LHO PLUMBING LAYOUT, αLIGO TCS CO2P, X-ARM SUPPLY	PVC, SSSL	0	1
17	D1101627-02	VIEWPORT ENCLOSURE ASSEMBLY, H1/L1	MULTI	1	1
16	D1101627-01	VIEWPORT ENCLOSURE ASSEMBLY, H1/L1	MULTI	1	1
15	D1300617-12	LLO PLUMBING LAYOUT, αLIGO TCS CO2P, Y-ARM RETURN	PVC, SSSL	1	0
14	D1300617-02	LLO PLUMBING LAYOUT, αLIGO TCS CO2P, Y-ARM SUPPLY	PVC, SSSL	1	0
13	D1300617-11	LLO PLUMBING LAYOUT, αLIGO TCS CO2P, X-ARM RETURN	PVC, SSSL	1	0
12	D1300617-01	LLO PLUMBING LAYOUT, αLIGO TCS CO2P, X-ARM SUPPLY	PVC, SSSL	1	0
11	D1101851-02	TCS CO2P SYS STEERING OPTICS ASSY, H1-L1, BSC2	MULTI	1	1
10	D1101851-01	TCS CO2P SYS STEERING OPTICS ASSY, H1-L1, BSC2	MULTI	1	1
9	D1101125	αLIGO TCS HWS OPTICS ASSY, HAM5 H1	MULTI	0	1
8	D1101085	αLIGO TCS HWS OPTICS ASSY IN VACUUM, H1 HAM4	MULTI	0	1
7	D1101849	αLIGO TCS HWS OPTICS ASSY In Vac, L1 HAM5	N/A	1	0
6	D1101846	αLIGO TCS HWS OPTICS ASSY IN VACUUM, L1 HAM4	N/A	1	0
5	D1101013-02	αLIGO TCS CO2P STERRING MIRROR 1 ASSY, H1-L1	MULTI	1	1
4	D1101013-01	αLIGO TCS CO2P STEERING MIRROR 1 ASSY, H1-L1	MULTI	1	1
3	D1000635	TCS HWS TABLE ASSEMBLY, HAM4	MULTI	1	1
2	D1000634-02	TCS CO2P TABLE ASSEMBLY, H1/L1	MULTI	1	1
1	D1000634-01	TCS CO2P TABLE ASSEMBLY, H1/L1	MULTI	1	1

PARTS LIST

NOTES AND TOLERANCES: (UNLESS OTHERWISE SPECIFIED)

- INTERPRET DRAWING PER ASME Y14.5-1994.
- DO NOT SCALE FROM DRAWING.

DIMENSIONS ARE IN INCHES

TOLERANCES:  
.XX ± .01  
.XXX ± .005

ANGULAR ± 1.0°

**LIGO** CALIFORNIA INSTITUTE OF TECHNOLOGY  
MASSACHUSETTS INSTITUTE OF TECHNOLOGY

SYSTEM ADVANCED LIGO SUB-SYSTEM AOS

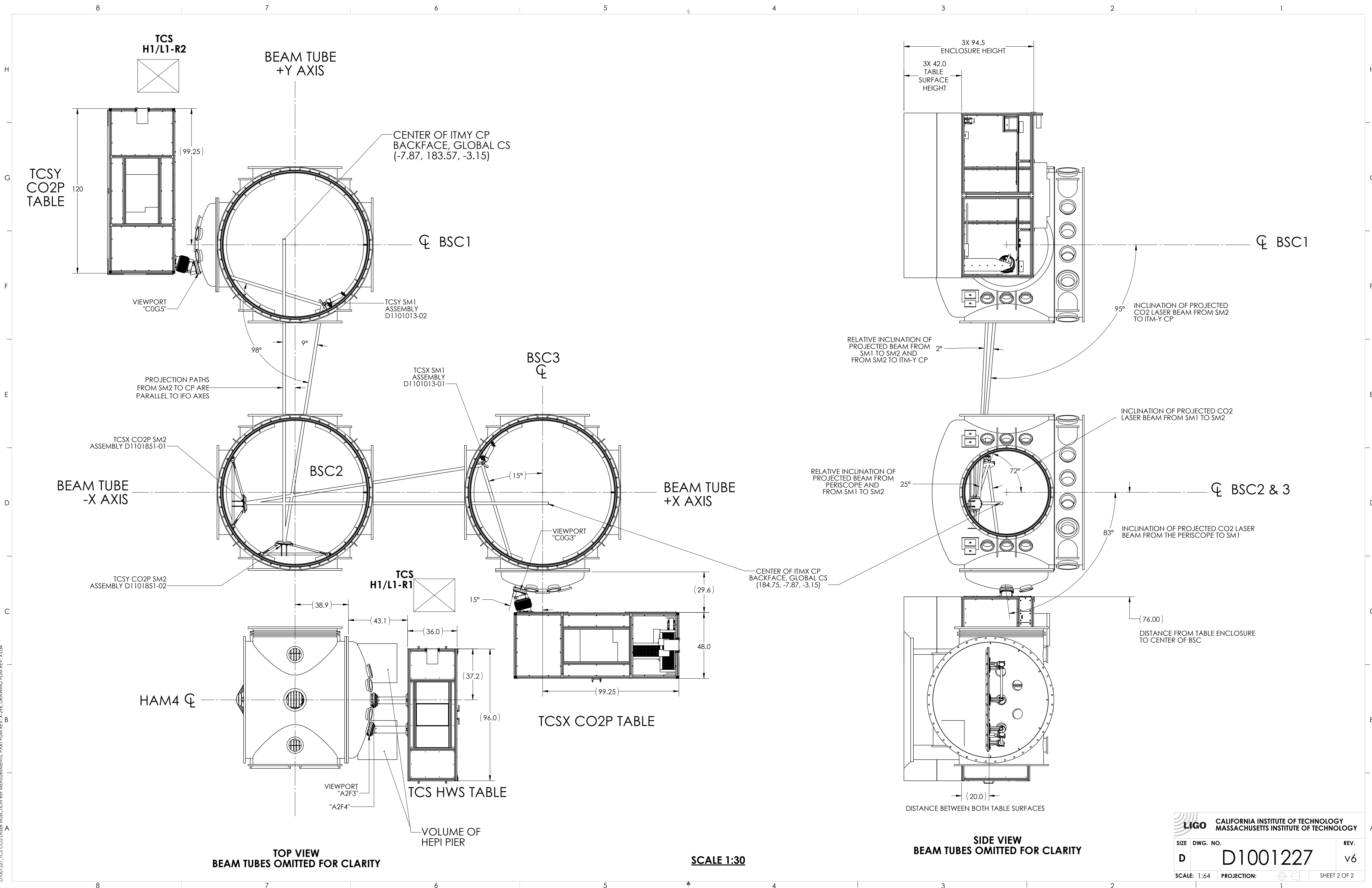
NEXT ASSY D0901466, D0901469

PART NAME αLIGO TCS CORNER STATION LAYOUT

DESIGNER M. JACOBSON 18 MAY 2010 SIZE DWG. NO. D1001227 REV. v6

DRAFTER M. JACOBSON 22 NOV 2013  
CHECKER A. BROOKS 25 NOV 2013  
APPROVAL D. COYNE SCALE: 1:64 PROJECTION: SHEET 1 OF 2

D1001227\_TCS CO2P LASER INJECTION REF MEASUREMENTS, PART PDM REV: X-296, DRAWING PDM REV: X-004



D1001227\_TCS CO2 LASER INJECTION REF MEASUREMENTS, PART PDM REV. X-296, DRAWING PDM REV. X-034

CALIFORNIA INSTITUTE OF TECHNOLOGY MASSACHUSETTS INSTITUTE OF TECHNOLOGY	
SIZE DWG. NO.	REV.
D D1001227	v6
SCALE: 1:64	PROJECTION:
SHEET 2 OF 2	