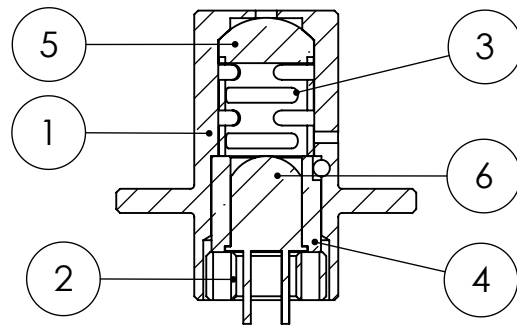
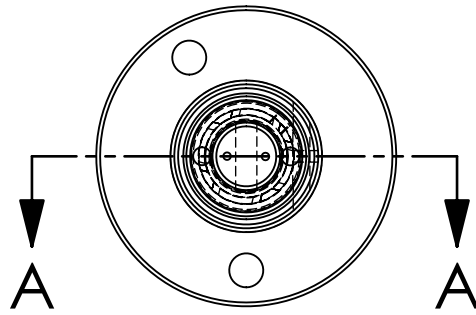
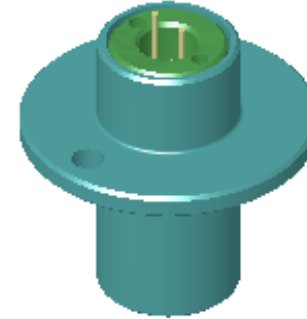
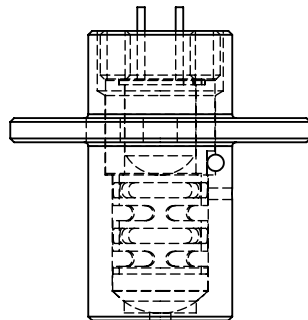


REV.	DATE	DCN #	DRAWING TREE #
A	6 NOV 06	E060262	E060243
B	1 APR 07	E060262	E060243
C	12 DEC 07	E060262	E060243



SECTION A-A
SCALE 2 : 1



ITEM NO	REQ.	SPARE	TOT.	PART NUMBER	DESCRIPTION
6	1	1	2		IRLED (OP232)
5	1	1	2		Plano-Convex Lens (08PQ06)
4	1	1	2	D060116	IRLED Sleeve
3	1	1	2	D060115	IRLED Lens Retainer
2	1	1	2	D060113	IRLED Retainer
1	1	1	2	D060111	IRLED Carrier

NOTES: (UNLESS OTHERWISE SPECIFIED)

- DO NOT SCALE FROM DRAWING
- REMOVE ALL SHARP EDGES, R.02 MAX.
- ALL MACHINING FLUIDS SHALL BE WATER SOLUBLE AND FREE OF SULFUR, CHLORINE AND SILICONE, SUCH AS CINCINNATI MILACRON'S CIMTECH 410 (STAINLESS STEEL)
- ASSEMBLE ACCORDING TO NOISE PROTOTYPE OSEM ASSEMBLY SPECIFICATION.

DIMENSIONS ARE IN INCHES [mm]

TOLERANCES:

.XX ± 0.01
.XXX ± 0.005

ANGULAR ± 0.5 °

MATERIAL

FINISH

	NAME	DATE
DRAWN	S.Brookes	26 JUN 06
CHECKED	S.Aston	12 OCT 06
APPROVED	A. Vecchio	31 OCT 06



CALIFORNIA INSTITUTE OF TECHNOLOGY
MASSACHUSETTS INSTITUTE OF TECHNOLOGY
IGR, GLASGOW UNIVERSITY GEO 600 GROUP
UNIVERSITY OF BIRMINGHAM

SYSTEM ADVANCED LIGO

SUB-SYSTEM SUS

NEXT ASSY D060218 BOSEM Assembly

PART NAME IRLED Assembly

SIZE DWG. NO. D060216

REV. C

SCALE: 1:2 PROJECTION: SHEET 1 OF 1