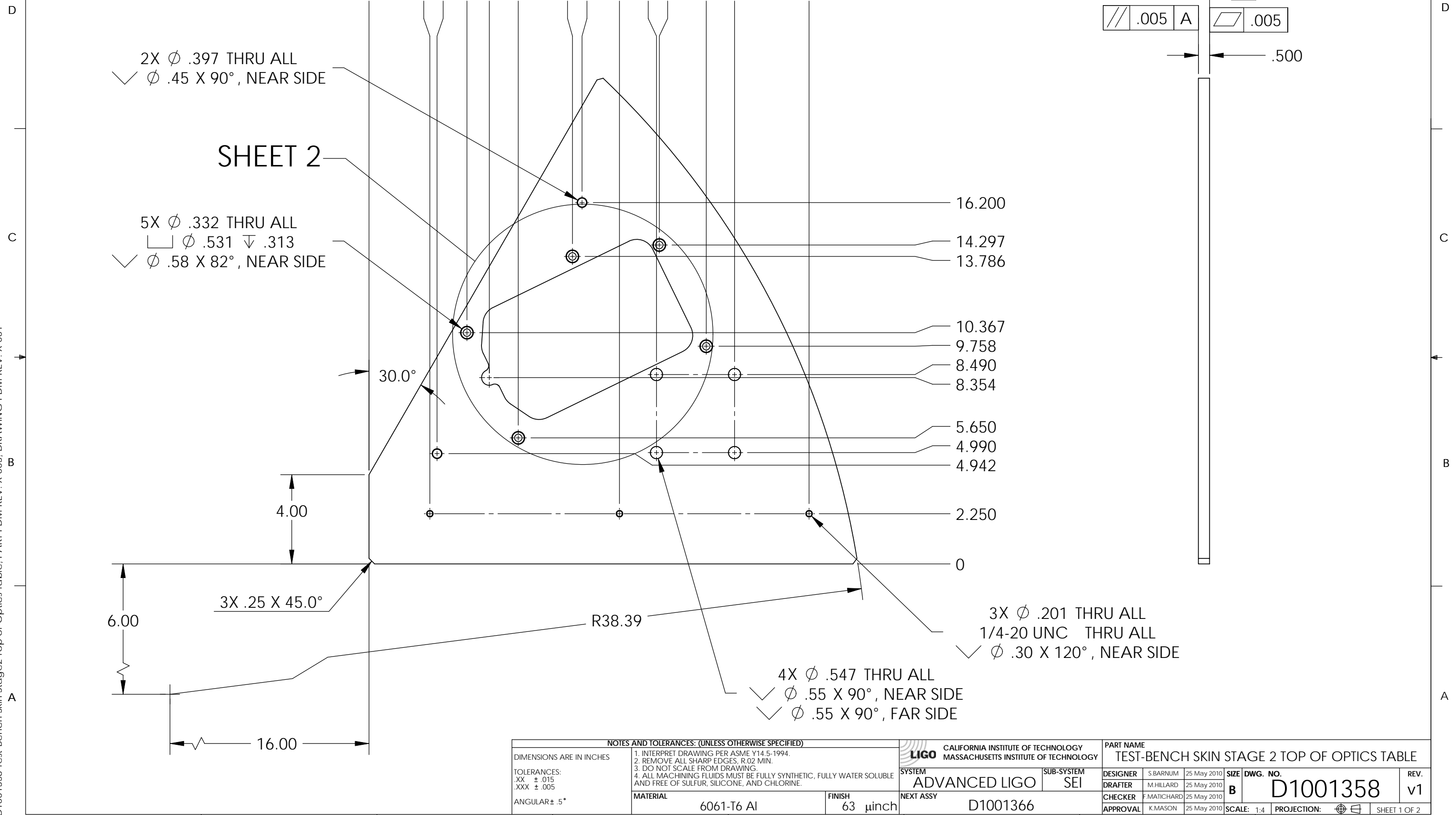


D1001358 Test-Bench Skin Stage2 Top of Optics Table, PART PDM REV: X-003, DRAWING PDM REV: X-001

REV.	DATE	DCN #	DRAWING TREE #
v1	25 May 2010	E1000195	-

NOTES CONTINUED:
 5. SCRIBE, ENGRAVE, OR MECHANICALLY STAMP (NO INKS OR DYES) DRAWING PART NUMBER, REVISION (AND VARIANT OR "TYPE" IF APPLICABLE ON NOTED SURFACE OF PART FOLLOWED ON THE NEXT LINE WITH A THREE DIGIT SERIAL NUMBER. SERIAL NUMBERS START AT 001 FOR THE FIRST ARTICLE AND PROCEED CONSECUTIVELY. USE MINIMUM 0.12 HIGH CHARACTERS, UNLESS THE SIZE OF THE PART DICTATES SMALLER CHARACTERS. A VIBRATORY TOOL MAY BE USED.
 EXAMPLE DXXXXXX-VY, TYPE-XX, S/N XXX.
 6. APPROXIMATE WEIGHT = 11.9 LB.

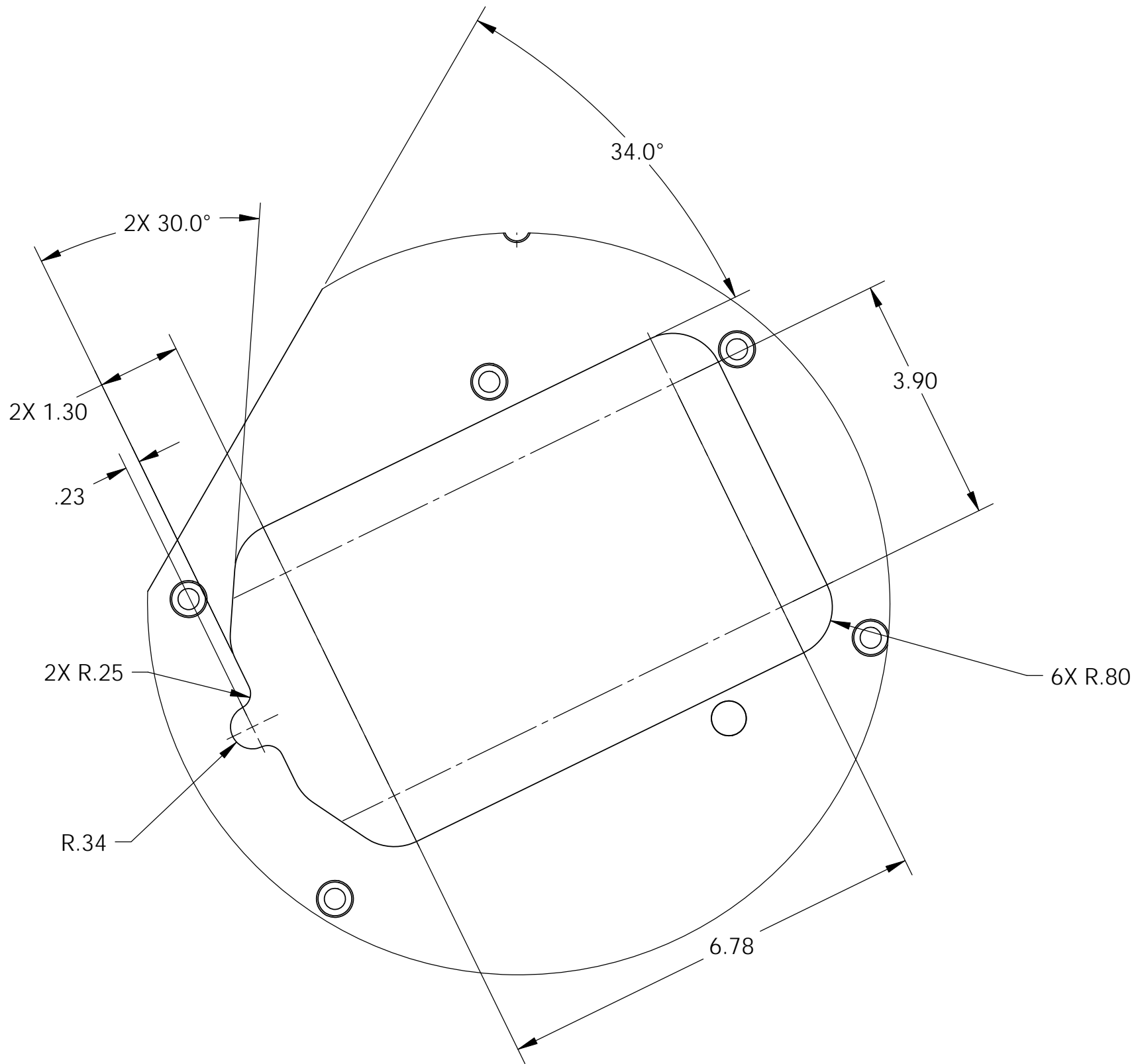


SHEET 2

NOTES AND TOLERANCES: (UNLESS OTHERWISE SPECIFIED)	
DIMENSIONS ARE IN INCHES	
TOLERANCES: .XX ± .015 .XXX ± .005	
ANGULAR ± .5°	
1. INTERPRET DRAWING PER ASME Y14.5-1994. 2. REMOVE ALL SHARP EDGES, R.02 MIN. 3. DO NOT SCALE FROM DRAWING. 4. ALL MACHINING FLUIDS MUST BE FULLY SYNTHETIC, FULLY WATER SOLUBLE AND FREE OF SULFUR, SILICONE, AND CHLORINE.	
MATERIAL	FINISH
6061-T6 Al	63 μinch

CALIFORNIA INSTITUTE OF TECHNOLOGY MASSACHUSETTS INSTITUTE OF TECHNOLOGY		PART NAME	
ADVANCED LIGO		TEST-BENCH SKIN STAGE 2 TOP OF OPTICS TABLE	
DESIGNER	S.BARNUM	25 May 2010	SIZE
DRAFTER	M.HILLARD	25 May 2010	DWG. NO.
CHECKER	F.MATICHARD	25 May 2010	B
APPROVAL	K.MASON	25 May 2010	SCALE: 1:4
NEXT ASSY		PROJECTION:	
D1001366			
		SHEET 1 OF 2	

D1001358 Test-Bench Skin Stage2 Top of Optics Table; PART PDM REV: X-003, DRAWING PDM REV: X-001



 CALIFORNIA INSTITUTE OF TECHNOLOGY MASSACHUSETTS INSTITUTE OF TECHNOLOGY		
SIZE B	DWG. NO. D1001358	REV. V1
SCALE: 1:4	PROJECTION: 	SHEET 2 OF 2

8 7 6 5 4 3 2 1

D
C
B
A

D
C
B
A

8 7 6 5 4 3 2 1