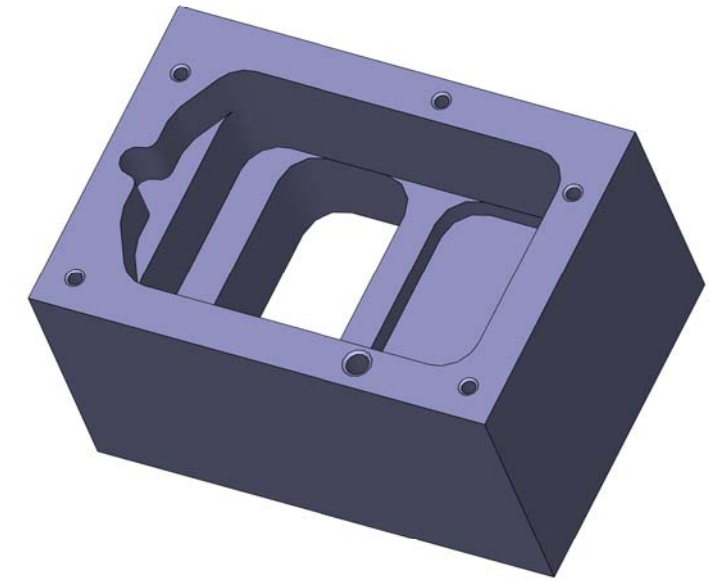
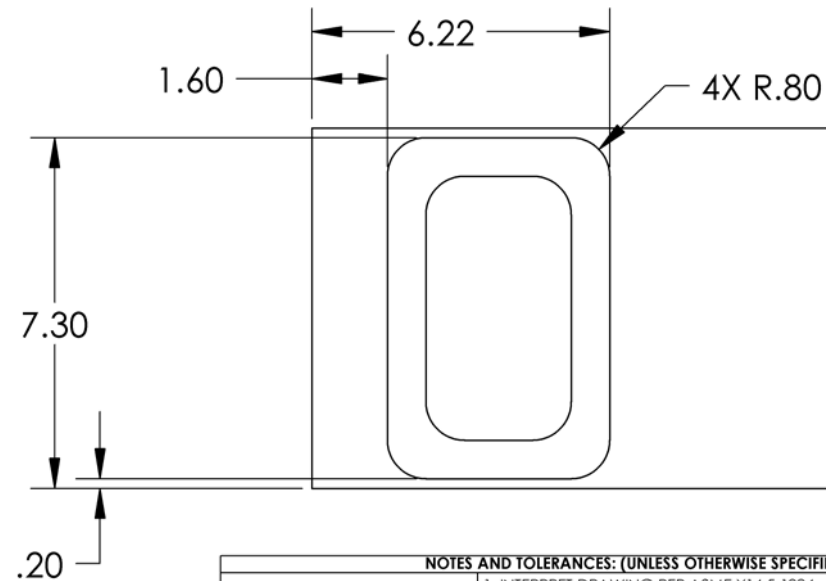
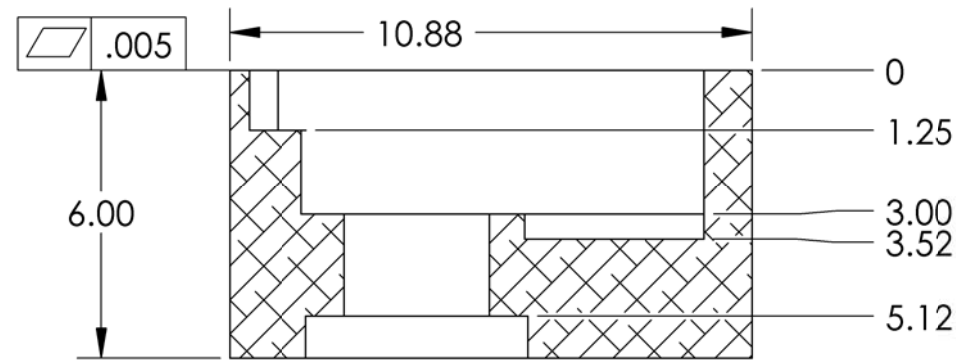
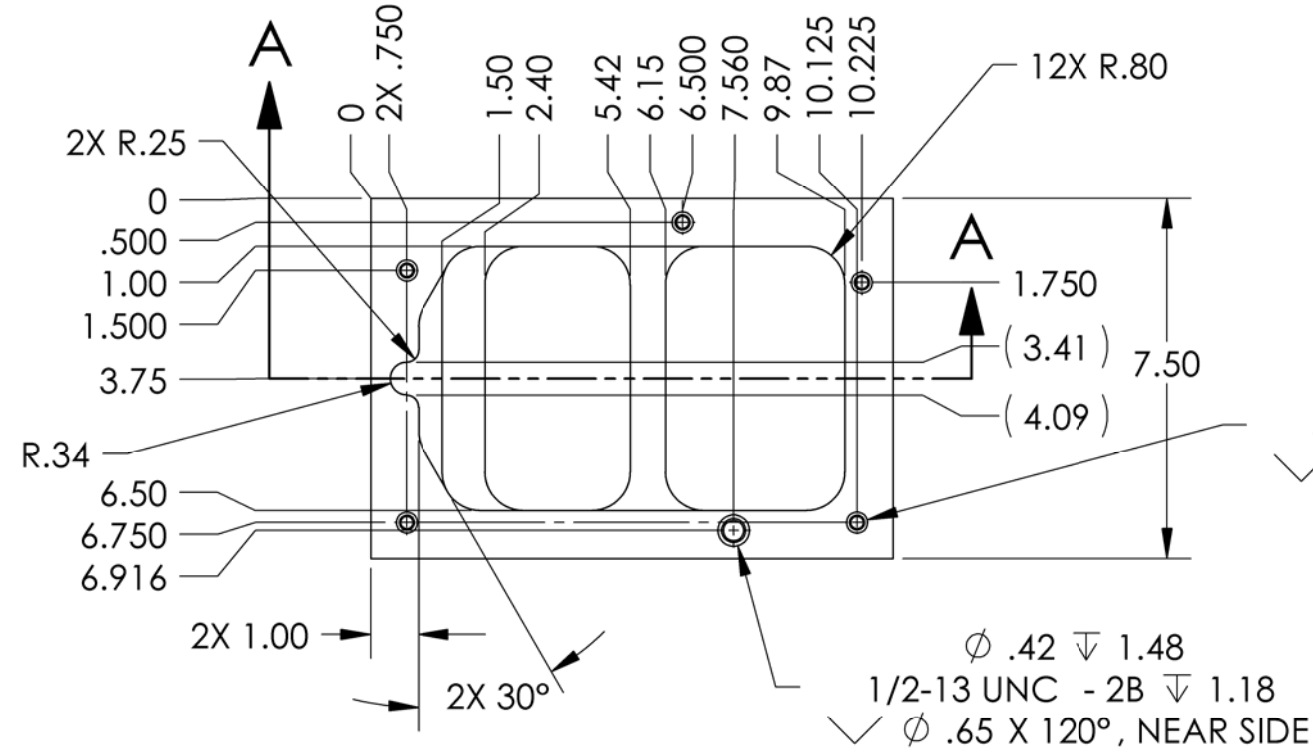


D1001359 Test-Bench Pocket Stage2 Optics Table, PART PDM REV: X-003, DRAWING PDM REV: X-005

NOTES CONTINUED:
 5. SCRIBE, ENGRAVE, OR MECHANICALLY STAMP (NO INKS OR DYES) DRAWING PART NUMBER, REVISION (AND VARIANT OR 'TYPE' IF APPLICABLE ON NOTED SURFACE OF PART FOLLOWED ON THE NEXT LINE WITH A THREE DIGIT SERIAL NUMBER, SERIAL NUMBERS START AT 001 FOR THE FIRST ARTICLE AND PROCEED CONSECUTIVELY. USE MINIMUM 0.12 HIGH CHARACTERS, UNLESS THE SIZE OF THE PART DICTATES SMALLER CHARACTERS. A VIBRATORY TOOL MAY BE USED.
 EXAMPLE DXXXXXXX-VY, TYPE-XX, S/N XXX.
 6. APPROXIMATE WEIGHT = 27.0 LB.

REV.	DATE	DCN #	DRAWING TREE #
v1	25 May 2010	E1000195	-
v2	03 Aug. 2010	E1000288	-
v3	03 Aug. 2010	E1000288	-



NOTES AND TOLERANCES: (UNLESS OTHERWISE SPECIFIED)	
DIMENSIONS ARE IN INCHES	
TOLERANCES: .XX ± .015 .XXX ± .005	
ANGULAR ± .5°	
1. INTERPRET DRAWING PER ASME Y14.5-1994. 2. REMOVE ALL SHARP EDGES, R.02 MIN. 3. DO NOT SCALE FROM DRAWING. 4. ALL MACHINING FLUIDS MUST BE FULLY SYNTHETIC, FULLY WATER SOLUBLE AND FREE OF SULFUR, SILICONE, AND CHLORINE.	
MATERIAL	FINISH
6061-T6 Al	63 μinch

CALIFORNIA INSTITUTE OF TECHNOLOGY MASSACHUSETTS INSTITUTE OF TECHNOLOGY		PART NAME TEST-BENCH POCKET STAGE 2 OPTICS TABLE	
SYSTEM	SUB-SYSTEM	DESIGNER	DATE
ADVANCED LIGO	SEI	S.BARNUM	25 May 2010
CHECKER	APPROVAL	DWG. NO.	REV.
F.MATICHARD	K.MASON	D1001359	v3
SCALE: 1:4	PROJECTION:	SHEET 1 OF 1	