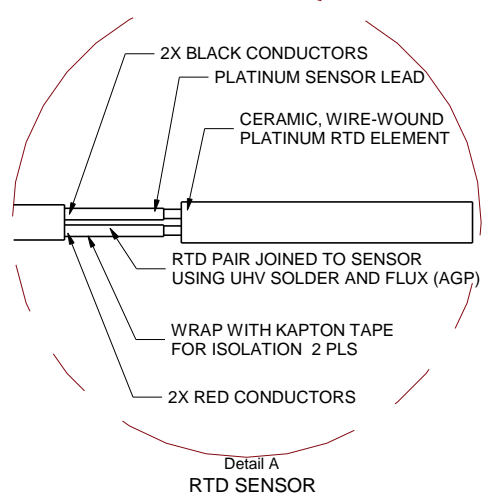
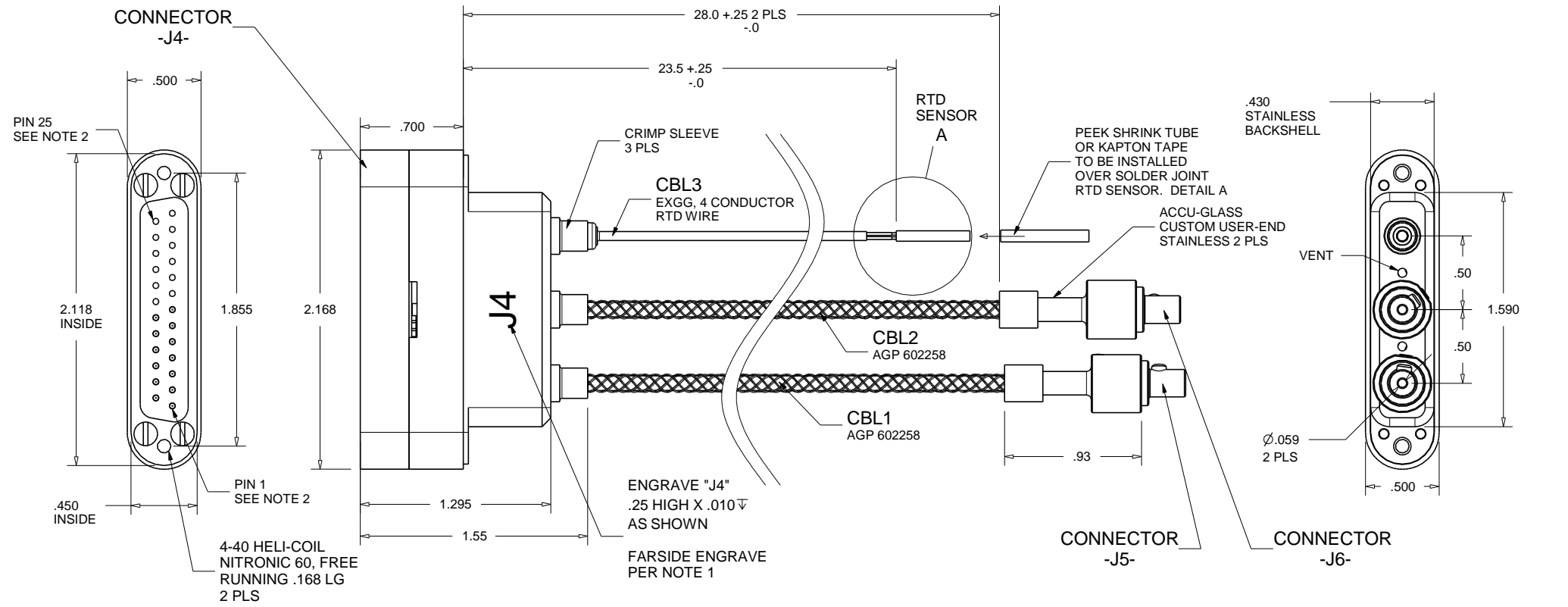
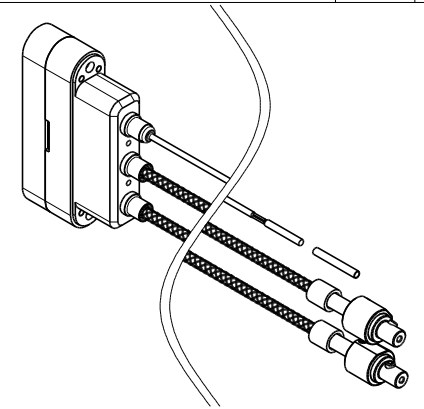


**PROPRIETARY AND CONFIDENTIAL**  
 THE INFORMATION CONTAINED IN THIS DRAWING IS THE SOLE PROPERTY OF ACCU-GLASS PRODUCTS INC. ANY REPRODUCTION IN PART OR AS WHOLE WITHOUT THE WRITTEN PERMISSION OF ACCU-GLASS PRODUCTS INC. IS **PROHIBITED.**

1. ENGRAVE BACKSHELL USING .13 HIGH CHARACTERS. ENGRAVE PART NUMBER, REVISION FOLLOWED ON THE NEXT LINE WITH A SERIAL NUMBER PER NOTE 6
2. MACHINE ALL SURFACES TO REMOVE OXIDES AND MILL FINISH. USE OF ABBRASIVE REMOVAL TECHNIQUES IS NOT ALLOWED.
3. ALL PARTS SHALL BE MANUFACTURED IN ACCORDANCE WITH LIGO SPECIFICATION E0900364.
4. ALL JOINTS TO BE CRIMPED. NO OTHER FORM OF JOINT IS ALLOWED. EXCEPT FOR RTD SENSOR JOINT DETAIL A, ONLY UHV SOLDER TO BE USED.
5. ALL MATERIAL IS TO BE VIRGIN MATERIAL, WELD REPAIR, PLUGS ETC. IS NOT ALLOWED. NO REPAIRS SHALL BE MADE UNLESS APPROVED IN ADVANCE, AND IN WRITING, BY LIGO LABORATORY. REFER TO LIGO-E0900364
6. LIGO HAS RESERVED A BLOCK OF FIFTEEN UNIQUE SERIAL NUMBERS FOR THIS CABLE HARNESS S1106592 THRU S1106606



Rev	Description	Date	Approved
A	INITIAL RELEASE		
B	CHANGES LENGTHS OF CABLES	100511	C M
C	CHANGED PIN OUT	010512	C M




Accu-Glass Products Inc.  
 700 Arroyo Ave.  
 San Fernando, CA 91340  
 TEL 818-365-4215  
 FAX 818-365-7074  
 accuglassproducts.com

Notes:  
 1. DIMENSIONS SYMMETRICAL ABOUT CENTERLINES  
 2. NOT INDUSTRY STANDARD PIN LOCATIONS (REVERSED)

**\*UNCONTROLLED WEB COPY\***

Material	
ASSEMBLY	
Tolerances unless otherwise specified.	
.X ± .03	Angular: +/- .5°
.XX ± .01	Finish: Min. 63 Ra
.XXX ± .005	

Title: 25D PEEK MALE LIGO STYLE D1001519 V6 CUSTOM CABLE ASSEMBLY			
Drawn By Date	CR 113010	DWG. NO. 6-100001	Rev. C
Approved	C M	Sheet 1 OF 2	