

# Description of PowerFlux 2 algorithms and implementation (draft)

LIGO-T1000272-v5

Vladimir Dergachev

February 17, 2011

## Contents

<b>1</b>	<b>Introduction</b>	<b>5</b>
<b>2</b>	<b>Overview of PowerFlux and loosely coherent methods</b>	<b>6</b>
<b>3</b>	<b>Power sum caching</b>	<b>7</b>
<b>4</b>	<b>PowerFlux2 architecture</b>	<b>9</b>
4.1	Data flow . . . . .	9
4.2	Data structures overview . . . . .	10
4.3	Partial power sum . . . . .	11
4.4	SFT information . . . . .	12
4.5	Simple cache . . . . .	13
4.6	Power sums . . . . .	14
4.7	Summing context . . . . .	14
4.8	Alignment coefficients . . . . .	16
4.9	Point statistics . . . . .	16
4.10	Accumulated statistics . . . . .	17
4.11	Extremal points . . . . .	17

<b>5</b>	<b>Single bin semi-coherent statistic</b>	<b>20</b>
5.1	Computation of partial power sums . . . . .	21
5.2	Caching of partial power sums . . . . .	21
5.3	Power sum accumulation . . . . .	21
<b>6</b>	<b>Loosely coherent statistic</b>	<b>22</b>
6.1	Computation of partial power sums . . . . .	22
6.2	Caching of partial power sums . . . . .	23
6.3	Power sum accumulation . . . . .	23
<b>7</b>	<b>Processing of amplitude modulation in PowerFlux2</b>	<b>23</b>
<b>8</b>	<b>Example output</b>	<b>26</b>
<b>9</b>	<b>Running PowerFlux on the cluster</b>	<b>30</b>
<b>10</b>	<b>PowerFlux configuration options</b>	<b>31</b>
10.1	config . . . . .	39
10.2	Input/Output options . . . . .	39
10.2.1	config . . . . .	39
10.2.2	dataset . . . . .	39
10.2.3	input-format . . . . .	39
10.2.4	segments-file . . . . .	40
10.2.5	veto-segments-file . . . . .	40
10.2.6	ephemeris-path . . . . .	40
10.2.7	earth-ephemeris . . . . .	40
10.2.8	sun-ephemeris . . . . .	40
10.2.9	skymarks . . . . .	40
10.2.10	output . . . . .	40
10.2.11	extra-phase . . . . .	40
10.3	Analysis parameters . . . . .	41
10.3.1	first-bin . . . . .	41
10.3.2	nbins . . . . .	41
10.3.3	side-cut . . . . .	41
10.3.4	extra-side-cut . . . . .	41
10.3.5	spindown-start . . . . .	41
10.3.6	spindown-count . . . . .	41
10.3.7	spindown-step . . . . .	42

10.3.8	nfshift	42
10.3.9	nchunks	42
10.3.10	niota	42
10.3.11	npsi	42
10.3.12	phase-mismatch	42
10.3.13	doppler-multiplier	42
10.3.14	dInv	42
10.3.15	compute-cross-terms	43
10.4	Analysis options	43
10.4.1	no-demodulation	43
10.4.2	no-decomposition	43
10.4.3	no-am-response	43
10.4.4	skymap-resolution	43
10.4.5	skymap-resolution-ratio	43
10.4.6	small-weight-ratio	44
10.4.7	three-bins	44
10.4.8	do-cutoff	44
10.4.9	filter-lines	44
10.4.10	subtract-background	44
10.4.11	sse	44
10.4.12	preallocate-memory	45
10.4.13	memory-allocation-retries	45
10.5	Data reporting options	45
10.5.1	skymap-orientation	45
10.5.2	nskybands	45
10.5.3	skyband-method	45
10.5.4	band-axis	45
10.5.5	band-axis-norm	46
10.5.6	large-S	46
10.5.7	only-large-cos	46
10.5.8	ks-test	46
10.5.9	upper-limit-comp	46
10.5.10	lower-limit-comp	46
10.5.11	write-dat	47
10.5.12	write-png	47
10.6	Software injections	47
10.6.1	fake-linear	47
10.6.2	fake-circular	47

10.6.3	fake-ra	47
10.6.4	fake-dec	48
10.6.5	fake-orientation	48
10.6.6	fake-spindown	48
10.6.7	fake-strain	48
10.6.8	fake-freq	48
10.6.9	fake-dInv	48
10.6.10	fake-freq-modulation-depth	48
10.6.11	fake-freq-modulation-freq	48
10.6.12	fake-freq-modulation-phase	48
10.6.13	fake-phase-modulation-depth	49
10.6.14	fake-phase-modulation-freq	49
10.6.15	fake-phase-modulation-phase	49

11	Appendix A: example configuration files	50
----	---	----

## List of Figures

1	Flowchart of PowerFlux code	9
2	PARTIAL_POWER_SUM	11
3	SEGMENT_INFO	12
4	SIMPLE_CACHE	13
5	POWER_SUM	14
6	SUMMING_CONTEXT	15
7	ALIGNMENT_COEFFS	17
8	POINT_STATS	18
9	POWER_SUM_STATS	19
10	EXTREME_INFO	20
11	Call graph of PowerFlux2 outer loop	27
12	Example SNR skymap	28
13	Example upper limit skymap	29
14	Zoomed in SNR skymap	30
15	config.single_bin	50
16	config.single_bin_zoomed	51
17	config.loose_pi_2	52
18	all_sky_marks.txt	53
19	random.dst	53

# 1 Introduction

PowerFlux is a program for estimating the flux of monochromatic gravitational waves from a particular source in the sky. It uses short Fourier transform files (SFTs) of 30 minute duration (also called “coherence time”) as input data. Because of this, PowerFlux is much less sensitive to variations in phase than coherent methods (for example ComputeFStatistic). The result is a trade-off of sensitivity for drastic reduction of search space, allowing for full-sky full-bandwidth searches to be completed in reasonable time.

This algorithm has been previously described in [1, 2, 3].

The original PowerFlux code was designed for efficient computation of power sums in 0.25 Hz bands while iterating over sky templates, spindowns and polarizations. A Feldman-Cousins algorithm [4] was then used to obtain upper limits. A number of auxiliary values were collected as well, in particular signal-to-noise ratios, locations of outliers and values of Kolmogorov-Smirnov tests to verify Gaussianity of underlying data.

The all-sky search of full S5 dataset which spanned 2 years of data presented a number of challenges:

- The spindown step used in the search had to be decreased to  $3 \times 10^{-11}$  Hz/s from  $5 \times 10^{-10}$  Hz/s used in previous searches. This greatly increased the computing time needed to cover the same range of parameters.
- The larger dataset strained memory limits of available computing clusters. At the moment the largest cluster is ATLAS which makes available 2 GB of memory per node - a soft limit as actual quad-core machines have 8 GB of memory which is shared between 4 nodes.
- For a good portion of frequency range full S5 dataset is the most sensitive to date and is expected to be superseded only when advanced LIGO or Virgo detectors come into operation. This presents a problem as we cannot rely on more sensitive data to confirm or reject potential candidates.

These issues were met by rewriting PowerFlux analysis pipeline to accommodate new search methods and increase efficiency. The existing startup code - including sky grid generation, SFT input-output and software injection engine - was reused with only minimal changes to accommodate new pipeline. Thus both original (PowerFlux) and new (PowerFlux2) codes can

be compiled from the same common code base and tested using the same software injection code.

Both executables can run from the same configuration file and the options not applicable to the particular code are ignored.

The following features are new in PowerFlux2:

- Partial power sum cache provides 5-10x speedup when running in single bin mode.
- The ability to produce upper limits for subsets of the entire data broken down by time and interferometers, as well as their combinations. Thus outliers for individual interferometers and using all interferometers together are obtained from the same instance.
- Utilization of vector processing instructions of modern CPUs.
- Extensibility to new methods of computation power sums.
- Higher sensitivity (but slower) *loosely coherent* mode [5] of computing power sums.

## 2 Overview of PowerFlux and loosely coherent methods

PowerFlux estimates power coming from particular direction on the sky by computing the following weighted sum:

$$P[k, f_t, a_t] = \frac{\sum_{t \in SFTs} a_t^2 |z_{t, k+f_t}|^2 / w_t^4}{\sum_{t \in SFTs} a_t^4 / w_t^4}$$

Here we use  $a_t$  for the series of amplitude response coefficients for a particular polarization and direction on the sky,  $f_t$  denotes the series of frequency bin shifts due to Doppler effect and spindown,  $|z_{t, f_t}|^2$  is the power in bin  $f_t$  for SFT acquired at time  $t$  and  $k$  indexes bin number of the resulting power sum. The weights  $w_t$  describe level of noise in individual SFTs and do not depend on sky location or polarization.

This power is computed for 501 contiguous frequency bins at a time for a fixed sky location, spindown and polarization. These 501 numbers are used to compute signal-to-noise ratios, upper limits and other statistics.

The new loosely coherent mode takes a controllable amount of phase information into account trading computational efficiency for higher sensitivity. The particular implementation used in PowerFlux2 uses a double sum with a Lanczos kernel:

$$L[k, f_t, a_t] = \frac{\sum_{t_1, t_2 \in SFT_s} a_{t_1} \bar{a}_{t_2} K_{t_1, t_2}(\delta) \Phi(t_1) \bar{\Phi}(t_2) z_{t_1, k+f_{t_1}} \bar{z}_{t_2, k+f_{t_2}} / (w_{t_1}^2 w_{t_2}^2)}{\sum_{t_1, t_2 \in SFT_s} a_{t_1}^2 \bar{a}_{t_2}^2 K(t_1 - t_2) / (w_{t_1}^2 w_{t_2}^2)}$$

Here  $K_{t_1, t_2}(\delta)$  is the kernel configured at compile time and  $\Phi(t_1)$  is the phase correction obtained by computing emission time in solar system barycenter frame of reference. The parameter  $\delta$  governs the amount of phase drift the search can tolerate in 1800 seconds. The tested values include  $\pi$ ,  $\pi/2$  and  $\pi/5$ . For these values of  $\delta$  most cross terms are zero and a number of approximations (discussed later) can significantly speedup the computation.

By analyzing data with successively smaller values of  $\delta$  the loosely coherent code can confirm or reject outliers from original PowerFlux analysis, while still preserving a large degree of immunity to phase variations that benefit original PowerFlux method. This provides greater feedback on the nature of the signal (instrumental or astrophysical) that caused the outlier as well as confidence that small deviations from accepted astrophysical signal model.

In addition, the method has sufficient speed to analyze large areas of the sky at low frequencies where Doppler shifts are small and original PowerFlux method has difficulty distinguishing between instrumental artifacts and real signal.

### 3 Power sum caching

The most significant change in PowerFlux is the introduction of partial power sum cache. The idea is as follows: suppose we are analyzing a stretch of data several month long. Then the minimal change in spindown value that the search can tolerate is determined by this large timebase.

Consider now a partition of the power sum over the entire dataset into stretches 2 week long. Each stretch can tolerate significantly larger spindown step. If we precompute the partial power sums for each stretch we can quickly conclude the entire computation by picking the appropriate partial power sum altered by some constant frequency shift for each finer spindown value.

This approach can be further elaborated by noting that the other large source of frequency shift is Doppler effect from Earth orbital velocity vector which also stays almost constant on the scale of a few weeks. Thus additional savings can be realized by extending the same principle to groups of nearby sky templates.

The actual implementation groups all of these concepts together.

First, we compute power sums for groups of sky templates for which we can assume constant amplitude response (we will call such a group a “patch”).

Secondly, the only thing that matters for computation of power sums are per-SFT frequency shift and, for the loosely coherent search, the relative phase adjustment.

Then an associative cache that uses sequences of frequency shifts as key will provide a model-independent way to accelerate the code and take advantage of degeneracy between signal parameters on short timescales.

Several nuances result in improved performance:

- In practice the frequency shifts are real numbers. To use them as a key one should round them to the nearest point on a frequency grid. For single bin PowerFlux mode this means rounding to the nearest frequency bin.
- Two sequences of shifts that are different by the same constant in every term can be easily derived from the same power sum if it had enough extra points to accommodate the offset.
- It is best to group SFTs by the magnitude of their frequency shift. This way they are more likely to differ by only a constant shift from previously computed group.

The result of all these improvements is that a single spindown run in single-bin PowerFlux mode usually sees cache efficiency on the order of 90%, while a multiple spindown run can achieve efficiency of 95%. The cached sums still need to be accumulated and analyzed, so the overall gain in speed is between 5x (for single spindown run) to 10x (for multiple spindowns).



## 4 PowerFlux2 architecture

### 4.1 Data flow

The data flow of PowerFlux can be followed on figure 1. We start with 1800-second short Fourier transforms (SFTs), which are first analyzed without demodulation to establish general noise levels and isolation sharp lines which are typically caused by detector artifacts.

A summing engine generates sky and spindown templates and precomputes quantities needed to determine Doppler shift, emission times in solar system barycenter frame and amplitude response. An index of SFTs needed to analyze the particular chunk of data is created and populated with information for each template in turn.

With this summing plan in hand we query the cache engine for computed **partial power sums**. If an existing sum is found in cache it is returned immediately. If not the caching engine calls an appropriate function to compute the partial power sum.

When partial power sums computed for all chunks they are passed on to the statistics code which produces upper limits and signal-to-noise ratios for any combination of consecutive chunks for individual interferometer or all interferometers combined and the results are saved into log files.

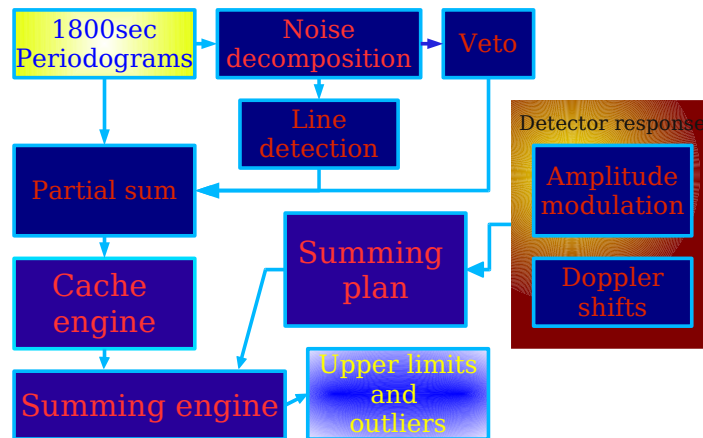


Figure 1: Flowchart of PowerFlux code

## 4.2 Data structures overview

Like its predecessor, PowerFlux2 is structured as a computational engine where a library of functions operates on data structures that carry information throughout the pipeline.

The following data structures are particularly important:

- `PARTIAL_POWER_SUM` carries the results of accumulating power from a subset of available SFTs. Instead of specializing to particular polarizations (as has been done in earlier version of PowerFlux) we carry the coefficients of the polynomials (quadratic in power and quartic in weight) that depend on polarization coefficients.
- `SEGMENT_INFO` is filled in with information on a single SFT to be included into `PARTIAL_POWER_SUM`
- `SIMPLE_CACHE` keeps the cache of previously computed partial power sums.
- `POWER_SUM` contains information on particular template (sky location, spindown and sub-bin frequency shift) and computed partial power sum.
- `SUMMING_CONTEXT` carries the parameters that define which particular flavour of power sum is being computed as well as information local to a particular computational thread. In the current code there is one such structure for each allocated thread.
- `ALIGNMENT_COEFFS` specifies a particular polarization and contains pre-computed coefficients ready to convert a `PARTIAL_POWER_SUM` into a weighted sum for computation of upper limits.
- `POINT_STATS` is used to store computed upper limit, signal-to-noise ratio and other statistics for a particular polarization, sky location, spindown and sub-bin frequency shift.
- `POWER_SUM_STATS` carries aggregate information for a particular power sum or a set of templates.
- `EXTREME_INFO` carries aggregate information for the entire computation. The skymap members are `NULL` by default which saves memory in batched analysis.

### 4.3 Partial power sum

The figure 2 shows the declaration of the `PARTIAL_POWER_SUM` structure. The weighted power sum depends quadratically on amplitude modulation, while the sum of weights depends on it in the fourth degree. The individual components are labeled `pp`, `pc` and `cc` for the quadratic case and `pppp`, `pppc` and so on for the quartic case.

```
typedef struct {
    int type;
    int nbins;

    REAL c_weight_pppp;
    REAL c_weight_pppc;
    REAL c_weight_ppcc;
    REAL c_weight_pccc;
    REAL c_weight_cccc;

    REAL *weight_pppp;
    REAL *weight_pppc;
    REAL *weight_ppcc;
    REAL *weight_pccc;
    REAL *weight_cccc;

    /* power sums - plus^2, plus*cross and cross^2*/
    REAL *power_pp;
    REAL *power_pc;
    REAL *power_cc;

    int offset; /* this is the index of the bin with index 0 in the output (i.e. fi

    int weight_arrays_non_zero;
    int collapsed_weight_arrays;
} SUFFIX(PARTIAL_POWER_SUM);
```

Figure 2: `PARTIAL_POWER_SUM`

There are two sets of fields accumulating weights - the constant fields hold overall weight, while weight arrays are used only of line avoidance is being performed.

## 4.4 SFT information

The array of structures `SEGMENT_INFO` 3 is used as a summing plan for the un-cached power sum functions. It carries the information on which SFTs with what frequency shifts and amplitude response coefficients will be summed. The actual functions are thus isolated from a specific signal model that is used in the power sum accumulation function.

The code implementing partial power sum cache ignores amplitude response coefficients, so they should be kept fixed between calls to reset the cache.

```
typedef struct {
/* fields below are filled in when computing power */

/* amplitude response factors to use in power sum - note these are kept constant through
float f_plus;
float f_cross;

/* bin shift to apply, this is in units of 1/coherence_time - as opposed to power sums *
double bin_shift;
double diff_bin_shift; /* linear component, drift from one frequency bin to another */

/* fields below are filled in when locating segments */

/* for convenience, same as datasets[dataset].gps[segment] */
double gps;
double detector_velocity[3]; /* also from datasets[dataset] */
double coherence_time;

/* segment coordinates */
int dataset;
int segment;
int index; /* arbitrary index for use by power_sum accumulation code, typically for refer
} SEGMENT_INFO;
```

Figure 3: `SEGMENT_INFO`

## 4.5 Simple cache

To speedup computation PowerFlux keeps an associative cache 4 of computed partial power sums. The `id` member identifies which particular pipeline flavour created it.

During execution the cache collects statistics on its performance. Besides basic `hits` and `misses` counters, a cache fault can be caused by an `overwrite` when key collision occurs or `large_shift` when we are requesting to compute a power sum with a constant frequency offset too large to be accommodated by built-in window.

The cache structure is reset for different sets of templates (“patches”) and different SFT sets. The SFT count it expects is kept in `segment_count` variable. The actual cache keys are the sequences of `SEGMENT_INFO` structures kept in `si` member. Their hashes are stored in the `key` field of the structure.

```
typedef struct {
long id;

/* statistics */
long hits;
long misses;
long overwrites;
long large_shifts;
int max_size;

/* cache contents */
int segment_count;
int size;
int free;
int *key;
SEGMENT_INFO **si;
PARTIAL_POWER_SUM_F **pps;
} SIMPLE_CACHE;
```

Figure 4: SIMPLE\_CACHE

## 4.6 Power sums

The `POWER_SUM` data structure wraps `PARTIAL_POWER_SUM` with information sufficient to calculation frequency shift and amplitude response passed to partial power sum functions. It thus acts as a template. The partial power sum will hold the accumulated data, and `min_gps` and `max_gps` members record the actual sampled timebase.

An array of power sum structures is passed to power sum accumulation function and all the templates specified by the array are computed simultaneously and share the same cache.

```
typedef struct S_POWER_SUM {
float freq_shift; /* additional shift e.g. for half-bin sampling */
float spindown;
float ra;
float dec;
float patch_ra;
float patch_dec;

double min_gps;
double max_gps;

float e[26];
float patch_e[26];

int skyband;

PARTIAL_POWER_SUM_F *pps;
} POWER_SUM;
```

Figure 5: `POWER_SUM`

## 4.7 Summing context

The summing context keeps thread specific information as well as methods defining which particular computation is being done.

The figure 6 shows the declaration of the structure. The method `get_uncached_power_sum` performs the actual computation of partial power sum and defines the search

```

typedef struct S_SUMMING_CONTEXT {
void (*get_uncached_power_sum)(struct S_SUMMING_CONTEXT *ctx, SEGMENT_INFO *si, int count);
void (*accumulate_power_sum_cached)(struct S_SUMMING_CONTEXT *ctx, SEGMENT_INFO *si, int count);
void (*accumulate_power_sums)(struct S_SUMMING_CONTEXT *ctx, struct S_POWER_SUM *ps, int count);

int cache_granularity;
double inv_cache_granularity;
double half_inv_cache_granularity;

int diff_shift_granularity;
double inv_diff_shift_granularity;
double half_inv_diff_shift_granularity;

int sidereal_group_count; /* group sfts falling on similar times of the day in this many groups */
double summing_step; /* process SFTs in blocks of this many seconds each */
int time_group_count; /* group SFTs by their GPS time within a block into this many groups */

void *cache;
void (*free_cache)(struct S_SUMMING_CONTEXT *ctx);
void (*print_cache_stats)(struct S_SUMMING_CONTEXT *ctx);
void (*reset_cache)(struct S_SUMMING_CONTEXT *ctx, int segment_count, int template_count);

void *patch_private_data;

/* dynamic parameters */
int loose_first_half_count;

} SUMMING_CONTEXT;

```

Figure 6: SUMMING\_CONTEXT

being performed. The accumulate methods implement the cache of previously computed power sums as well as calling sequence that makes most use of it. The same method can be shared between different search codes, but usually needs tuning to make the most of the cache while still accurately computing the power sums.

The most important tuning parameter is `cache_granularity` which controls the sub-frequency bin tolerance of the cache for the purpose of computing frequency shifts. The parameter `diff_shift_granularity` performs the same function for frequency-dependent Doppler shift variation that loosely coherent search is sensitive to.

To make the most use of the cache the SFTs are partitioned in blocks of `summing_step` seconds and each block is further partitioned into `sidereal_group_count` groups by the magnitude of the frequency shift - in most cases it mostly depends on the hour of day.

## 4.8 Alignment coefficients

The `ALIGNMENT_COEFFS` 7 structure holds precomputed amplitude response coefficients, which make easy to compute numerator and denominator of weighted power sum by simply taking a dot product of  $(pp, pc, cc)$  and  $(pppp, pppc, ppcc, pccc, cccc)$  members of the alignment structure with accumulated `PARTIAL_POWER_SUM`.

An array of alignment coefficients is allocated - one for each sampled polarization. A circular polarization is always added, so the total number of polarizations sampled is `npsi·niota+1`.

## 4.9 Point statistics

The point statistics structure 8 contains upper limit and signal-to-noise ratio estimates for a particular template and particular polarization, as well as many other statistic parameters of various usefulness. The `iota` and `psi` members specify particular polarization this data was computed for. The four last fields are used to convey complete information on point for which the values were achieved - which is the maximum of upper limit and signal-to-noise ratio (both maximums are achieved for the same frequency bin).

`ks_value` has the value of Kolmogorov-Smirnov statistic when `statistics-function` is set to `sorted`. Otherwise the code fills in `m1_neg`, `m3_neg` and `m4` members which are the negative parts of first and third moments and a fourth moment. These are used to check for Gaussianity of computed power sums.



```

typedef struct {
float iota;
float psi;

float pp;
float pc;
float cc;

float pppp;
float pppc;
float ppcc;
float pccc;
float cccc;
} ALIGNMENT_COEFFS;

```

Figure 7: ALIGNMENT\_COEFFS

`weight_loss_fraction` describes how much underlying data was discarded due to line veto.

## 4.10 Accumulated statistics

`POWER_SUM_STATS` 9 holds the accumulated statistics from `POINT_STATS` structures computed for many polarizations and templates.

The inclusion of complete `POINT_STATS` structures for highest upper limit and signal-to-noise ratio points allows to identify where they were achieved.

## 4.11 Extremal points

The structure `EXTREME_INFO` 10 carries information about points which achieve maxima and minima of various statistics over different sets of templates. The skymap members contain maxima over spindowns, polarizations and frequencies. They can be set to `NULL` to conserve memory. The `band_info` members carry information about extremal points in each sky band.

There is one extreme info structure for each chunk of SFT data under analysis. The member `first_chunk` and `last_chunk` specify the start and end of the contiguous set of SFTs to analyze. `veto_num` indicates whether we are

```
typedef struct {
double iota;
double psi;

double ul;
double ll;
double centroid;
double snr;

double M;
double S;
double ks_value;
double m1_neg;
double m3_neg;
double m4;
double max_weight;
double weight_loss_fraction;

int ks_count;

int bin;

/* the following fields are for convenience and are filled in by outside code based on v
double frequency;
double spindown;
double ra;
double dec;

} POINT_STATS;
```

Figure 8: POINT\_STATS

```
typedef struct {
POINT_STATS highest_ul;
POINT_STATS highest_snr;
POINT_STATS highest_ks;
POINT_STATS highest_M;
POINT_STATS highest_S;
POINT_STATS highest_circ_ul;
double max_weight_loss_fraction;
double max_weight;
double min_weight;
double max_m1_neg;
double min_m1_neg;
double max_m3_neg;
double min_m3_neg;
double max_m4;
double min_m4;
int ntemplates;
} POWER_SUM_STATS;
```

Figure 9: POWER\_SUM\_STATS

using SFTs from a particular detector only, or all detectors simultaneously (-1).

```
typedef struct {
char *name;

float *ul_skymap;
float *circ_ul_skymap;
float *snr_skymap;
float *ul_freq_skymap;
float *circ_ul_freq_skymap;
float *snr_freq_skymap;
float *snr_ul_skymap;
float *max_weight_skymap;
float *min_weight_skymap;
float *weight_loss_fraction_skymap;
float *ks_skymap;

POWER_SUM_STATS *band_info;
int *band_valid_count;
int *band_masked_count;

/* convenience info for keeping track of which ei is which */
int first_chunk;
int last_chunk;
int veto_num;
} EXTREME_INFO;
```

Figure 10: EXTREME\_INFO

## 5 Single bin semi-coherent statistic

The single-bin semi-coherent summing mode is turned on by specifying `averaging-mode=one`. This implements conventional weighted power sum algorithm, with several optimizations that increase speed by up to a factor of 10 when iterating over many small spindown steps. The “single-bin” refers to the use of a single power bin from each Hann windowed SFT. It is possible to create a variation of the same algorithm that uses several SFT bins for more accurate

power estimation (called “matched filter” mode), however the matched filter employed for that purpose is computationally expensive and the results are more sensitive to sub-bin frequency shift.

## 5.1 Computation of partial power sums

The uncached partial power sum function computes the partial power sum taking into account amplitude modulation and SFT noise level. The weight estimation can be performed either by using the `TMedians` as in the first version of `PowerFlux`, or by computing variance of SFT bins actually used. This results in small improvement in sensitivity. The non-robustness of variance is actually useful as it deemphasizes SFTs with large spikes. Which of the two methods is used is determined by `tmedian-noise-level` parameter.

If line veto is on, the algorithm avoids lines by subtracting out the contribution of affected frequency bins.

Two variants of the function has been written - a regular C implementation and an optimized version using explicit calls to functions implementing vector based arithmetic.

## 5.2 Caching of partial power sums

The cached accumulation function implements a hash table that holds previously computed power sums. This assumes that amplitude modulation constants are the same for all templates being processed, therefore, the cache is emptied at the start of each patch with different amplitude modulation constants.

The key is based on the well-known modulo arithmetic algorithm applied to frequency bin shifts. The value of the first bin shift is subtracted out as translation by integer number of frequency bin can be easily accommodated by computing slightly more frequency bins than necessary.

## 5.3 Power sum accumulation

The power sum accumulation function computes the power sums in blocks of `summing_step` seconds (by default 10 days). Each block is partitioned into SFT groups by the magnitude of the frequency shifts. The total number of groups is governed by `sidereal-group-count` parameter. Note that the

groups do not have to be equal in length, in fact computation will be more efficient in the case of one large group.

## 6 Loosely coherent statistic

The loosely coherent method is activated by specifying `averaging-mode=loose_single_bin`. This turns on higher sensitivity, though slower, mode meant for investigation of small portions of the sky.

The code is contained in files `single_bin_loosely_coherent_sum.c` and `single_bin_loosely_coherent_sum.h` which define uncached partial power sum function as well as corresponding accumulation methods.

### 6.1 Computation of partial power sums

The uncached partial power sum function assumes that its input is split into two sets of SFTs (which may coincide). The number of SFTs in the first step is governed by parameter `loose_first_half_count` in the summing context. This function returns the double sum:

$$P_k = \sum_{i,j} b_{kj}^* K_{ji} a_{ki}$$

where  $a_{ki}$  are phase corrected SFT bins from the first set, index  $k$  differentiates different SFT bins, while  $i$  corresponds to time.  $b_{ki}$  denotes the phase corrected SFT bins from the second set. The kernel  $K_{ij}$  is a suitable loosely coherent kernel. In the present implementation we have explored exponential kernel described in [5], the sinc kernel and two variations of the Lanczos kernels. The latter have been chosen for regular use as it provides the best trade-off between flatness for a limited amount phase mismatch and keeping the most coefficients of  $K_{ij}$  zero.

The kernel presently used is based on Lanczos kernel with parameter 3 defined in function `lanczos_kernel3`:

$$\tilde{K}_{ij}(\delta) = \begin{cases} \delta |t_i - t_j| / 1800.0 \text{ sec} > 3.0 & 0.0 \\ \text{else} & \text{sinc}(\delta |t_i - t_j| / 1800.0 \text{ sec}) \text{sinc}(\delta |t_i - t_j| / 5400.0 \text{ sec}) \end{cases}$$

where  $\text{sinc}(x) = \frac{\sin(x)}{x}$  is the well-known *sinc* function.  $t_i$  are the GPS times of the SFTs being summed and  $\delta$  is the parameter describing tolerance to the phase mismatch.

The full kernel takes into account weights and amplitude modulation:

$$K_{ij} = F \sqrt{w_j} \tilde{K}_{ji} \sqrt{w_i}$$

where  $w_i$  are the conventional inverse square PowerFlux weights and  $A$  is one of quadratic amplitude modulation factors  $F_+^2$ ,  $F_\times^2$  or  $F_+F_\times$ . The imaginary component of amplitude modulation is neglected to fit the existing PowerFlux array layout (more details are in section 7).

Neither background subtraction nor line avoidance are implemented.

## 6.2 Caching of partial power sums

The cached accumulation function follows the same algorithm as the one for `single_bin` power sum method, except that key depends on differential shift as well as a regular one - this is to account for phase variance between neighbouring frequency bins.

## 6.3 Power sum accumulation

The power sum accumulation function is different in two respects: first, it is a double sum over SFT sets from each group. Secondly, the block is partitioned into groups both by sidereal time (as in `single_bin` case) and, in addition, by time as well. The latter is done to speed up computation - for large  $\delta$  values there is no reason to compute matrix elements between groups widely spaced SFT sets.

Also, the default value of `summing_step` parameter that describes the length of one block is 3 days, not 10 as for single bin code.

# 7 Processing of amplitude modulation in PowerFlux2

There are two ways to derive the formulas for universal polarization coefficients appropriate for computing bilinear products. One way is to apply mathematical technique of polarization of homogeneous polynomials, while the other is to derive it from the basics.

We will follow the formalism of [1, 6, 7, 8]

Let us consider a single SFT and an elliptically polarized source with major axis tilted at an angle  $\psi$  w.r.t. vertical axis.

We assume that during SFT period (usually 30 minutes or less) the frequency of source can be assumed constant.

$$\begin{aligned} h'_+ &= A_+ \cos(\omega t) \\ h'_\times &= A_\times \sin(\omega t) \end{aligned}$$

A generic pulsar signal can be represented as  $A_+ = h_0 (1 + \cos^2(\iota)) / 2$ ,  $A_\times = h_0 \cos(\iota)$ , with  $h_0 = A_+ + \sqrt{A_+^2 - A_\times^2}$  and  $\cos(\iota) = A_\times / (A_+ + \sqrt{A_+^2 - A_\times^2})$

We will assume that demodulation is performed for a fixed frame of plus and cross polarizations rotated at an angle  $\alpha$ . In this coordinate system we have:

$$\begin{aligned} h_+ &= A_+ \cos(\omega t) \cos(\epsilon) - A_\times \sin(\omega t) \sin(\epsilon) \\ h_\times &= A_+ \cos(\omega t) \sin(\epsilon) + A_\times \sin(\omega t) \cos(\epsilon) \end{aligned}$$

where we introduced  $\epsilon = 2(\psi - \alpha)$ .

The signal amplitude in SFT bin corresponding to frequency  $\omega$  is then

$$\begin{aligned} z &= \int (F_+ h_+ + F_\times h_\times) e^{-i\omega t} dt = \\ &= \frac{1}{2} (F_+ (A_+ \cos(\epsilon) + iA_\times \sin(\epsilon)) + F_\times (A_+ \sin(\epsilon) - iA_\times \cos(\epsilon))) \\ &= \frac{1}{2} (A_+ (F_+ \cos(\epsilon) + F_\times \sin(\epsilon)) + iA_\times (F_+ \sin(\epsilon) - F_\times \cos(\epsilon))) \end{aligned}$$

For the computation of loosely coherent statistic we are concerned with the product  $z^1 \bar{z}^2$  of signal amplitudes from two SFTs.

$$\begin{aligned} \text{Re} z^1 \bar{z}^2 &= \frac{1}{4} \text{Re} (A_+ (F_+^1 \cos(\epsilon) + F_\times^1 \sin(\epsilon)) + iA_\times (F_+^1 \sin(\epsilon) - F_\times^1 \cos(\epsilon))) \cdot \\ &\quad \cdot (A_+ (F_+^2 \cos(\epsilon) + F_\times^2 \sin(\epsilon)) - iA_\times (F_+^2 \sin(\epsilon) - F_\times^2 \cos(\epsilon))) = \\ &= \frac{1}{4} (A_+^2 (F_+^1 \cos(\epsilon) + F_\times^1 \sin(\epsilon))(F_+^2 \cos(\epsilon) + F_\times^2 \sin(\epsilon)) + \\ &\quad + A_\times^2 (F_+^1 \sin(\epsilon) - F_\times^1 \cos(\epsilon))(F_+^2 \sin(\epsilon) - F_\times^2 \cos(\epsilon))) \end{aligned}$$



Grouping terms with products of  $F_+$  and  $F_\times$  we obtain:

$$\begin{aligned}
\text{Re}z^1\bar{z}^2 &= \frac{1}{4} (A_+^2(F_+^1 \cos(\epsilon) + F_\times^1 \sin(\epsilon))(F_+^2 \cos(\epsilon) + F_\times^2 \sin(\epsilon)) + \\
&\quad + A_\times^2(F_+^1 \sin(\epsilon) - F_\times^1 \cos(\epsilon))(F_+^2 \sin(\epsilon) - F_\times^2 \cos(\epsilon))) = \\
&= \frac{1}{4} (F_+^1 F_+^2 (A_+^2 \cos^2(\epsilon) + A_\times^2 \sin^2(\epsilon)) + F_+^1 F_\times^2 (A_+^2 - A_\times^2) \cos(\epsilon) \sin(\epsilon) + \\
&\quad + F_\times^1 F_+^2 (A_+^2 - A_\times^2) \cos(\epsilon) \sin(\epsilon) + F_\times^2 F_\times^2 (A_+^2 \sin^2(\epsilon) + A_\times^2 \cos^2(\epsilon))) = \\
&= \frac{1}{4} (F_+^1 F_+^2 (A_+^2 \cos^2(\epsilon) + A_\times^2 \sin^2(\epsilon)) + \\
&\quad + \frac{1}{2} (F_+^1 F_\times^2 + F_\times^1 F_+^2) (A_+^2 - A_\times^2) \sin(2\epsilon) + \\
&\quad + F_\times^1 F_\times^2 (A_+^2 \sin^2(\epsilon) + A_\times^2 \cos^2(\epsilon))) = \\
&= \frac{1}{8} ((F_+^1 F_+^2 + F_\times^1 F_\times^2) (A_+^2 + A_\times^2) + \\
&\quad + (F_+^1 F_+^2 - F_\times^1 F_\times^2) (A_+^2 - A_\times^2) \cos(2\epsilon) + \\
&\quad + (F_+^1 F_\times^2 + F_\times^1 F_+^2) (A_+^2 - A_\times^2) \sin(2\epsilon)) \\
&= \frac{1}{8} (F_+^1 F_+^2 ((A_+^2 + A_\times^2) + (A_+^2 - A_\times^2) \cos(2\epsilon)) + \\
&\quad + F_\times^1 F_\times^2 ((A_+^2 + A_\times^2) - (A_+^2 - A_\times^2) \cos(2\epsilon)) + \\
&\quad + (F_+^1 F_\times^2 + F_\times^1 F_+^2) (A_+^2 - A_\times^2) \sin(2\epsilon))
\end{aligned}$$

Similarly

$$\begin{aligned}
\text{Im}z^1\bar{z}^2 &= \frac{1}{4} \text{Im} (A_+ (F_+^1 \cos(\epsilon) + F_\times^1 \sin(\epsilon)) + iA_\times (F_+^1 \sin(\epsilon) - F_\times^1 \cos(\epsilon))) \cdot \\
&\quad \cdot (A_+ (F_+^2 \cos(\epsilon) + F_\times^2 \sin(\epsilon)) - iA_\times (F_+^2 \sin(\epsilon) - F_\times^2 \cos(\epsilon))) = \\
&= \frac{1}{4} (F_+^1 F_\times^2 A_+ A_\times - F_\times^1 F_+^2 A_+ A_\times) = \\
&= \frac{1}{4} (F_+^1 F_\times^2 - F_\times^1 F_+^2) A_+ A_\times
\end{aligned}$$

Thus the response of a single SFT bin can be decomposed into detector response terms  $F_+^1 F_+^2$ ,  $F_\times^1 F_\times^2$ ,  $F_+^1 F_\times^2 + F_\times^1 F_+^2$  and  $F_+^1 F_\times^2 - F_\times^1 F_+^2$  and corresponding polarization dependent coefficients that are universal for all SFTs. If one computes partial power sums for detector response terms alone - an effort equivalent to sampling 3-5 individual polarizations - then it is possible to reconstruct power sums for any polarization without summing over the entire SFT set.

The single bin code is only concerned with the case  $z_1 = z_2$  in which case the imaginary component is identically zero.

The imaginary component is neglected in loosely coherent search code as original partial power sum structures were constructed for single bin case alone. This does not result in a large impact for two reasons:

- The antenna pattern factors evolve slowly in time making it small for closely spaced SFTs. For  $\pi/2$  search the kernel coefficients is less than 5% of maximum value for SFTs 2 hours apart. For  $\pi/5$  search the distance is 5 hours.

- The product  $A_+A_\times$  is small for linear polarizations which make up the overall upper limit. Thus the losses from not taking  $\text{Im}z^1\bar{z}^2$  into account for elliptically polarized signals are made up by overestimate when demodulating them as linearly polarized signals.

The overall correction is a combination of these two factors. For example, when considering  $\pi/2$  search we can bound the effect of evolution of amplitude modulation factors as 2 hours/24 hours = 8.3%. As the power injected by the signal varies by a factor of 8 between linearly polarized signals and circularly polarized signals the overall upper limit will not be affected.

## 8 Example output

The figures 12 and 14 contain example output produced using configuration files shown on figures 15, 16 and 17.

These configuration files can be obtained from `lsc-docs` CVS or copy-and-pasted from this document. To reproduce the output put all configuration files in a suitable directory along with ephemeris files `earth05-09.dat` and `sun05-09.dat` which can be found in `lalapps` repository. Then, using either multithreaded version of PowerFlux 2 `powerflux-mt2` or condorized single-threaded executable `powerflux-condor2` run the following commands:

```
powerflux-mt2 --config=config.single_bin
powerflux-mt2 --config=config.single_bin_zoomed
powerflux-mt2 --config=config.loose_pi_2
```

This will create directories `single_bin`, `single_bin_zoomed` and `loose_pi_2` with the images and log files.

In all cases we have made a linearly polarized injection into Gaussian noise that spanned several months. The injection strength was chosen to produce a signal-to-noise ratio of 8.29 - a typical value for an outlier to be followed up. Figure 12 shows the entire sky as would be explored in typical PowerFlux run. Figure 14 shows a skymap produced using regular single-bin code (left) and a skymap made with loosely coherent search with  $\delta = \pi/2$  and 10x magnification.

Figure 13 shows corresponding skymap of upper limits. The injection is barely visible in the top right corner due to less sensitive region at the equator.

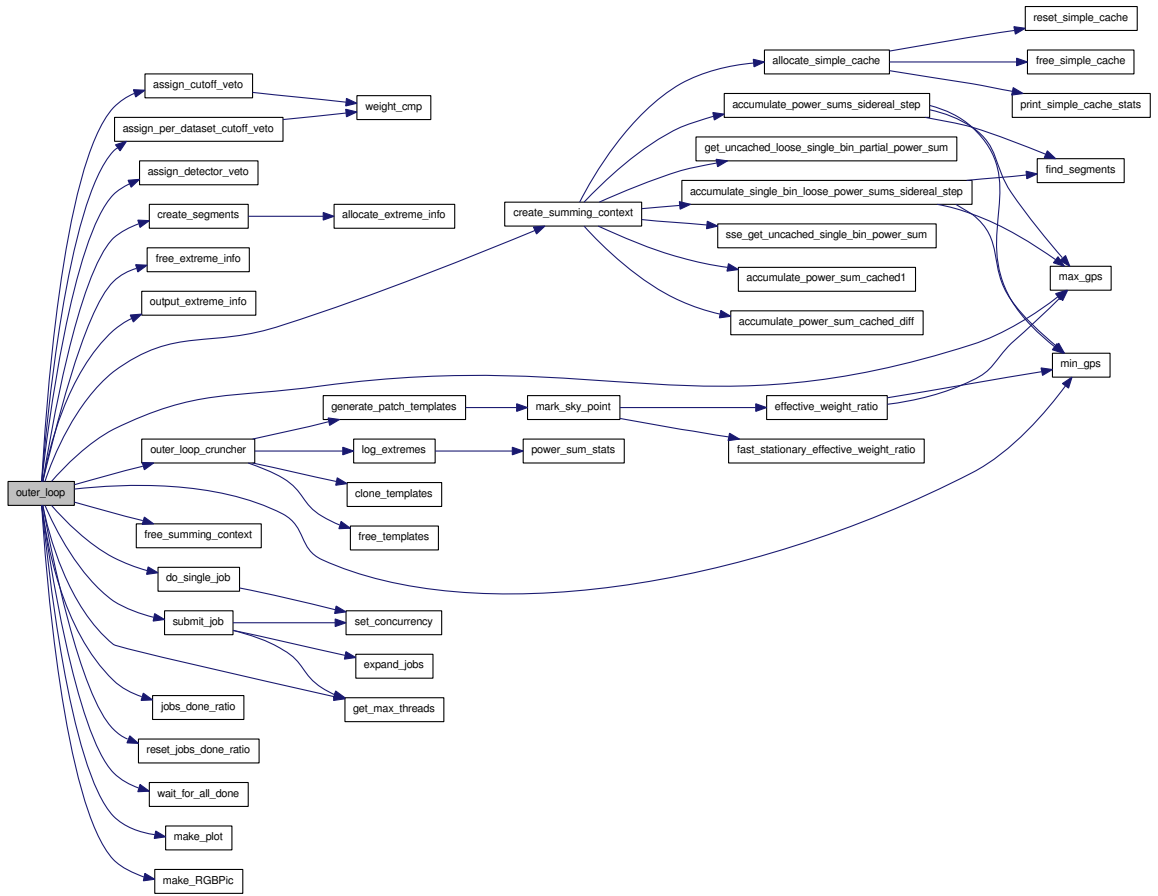


Figure 11: Call graph of PowerFlux2 outer loop function. This does not include calls to methods of summing context.

On all skymaps the square pixels describe patches - multiple templates were sampled for each patch.

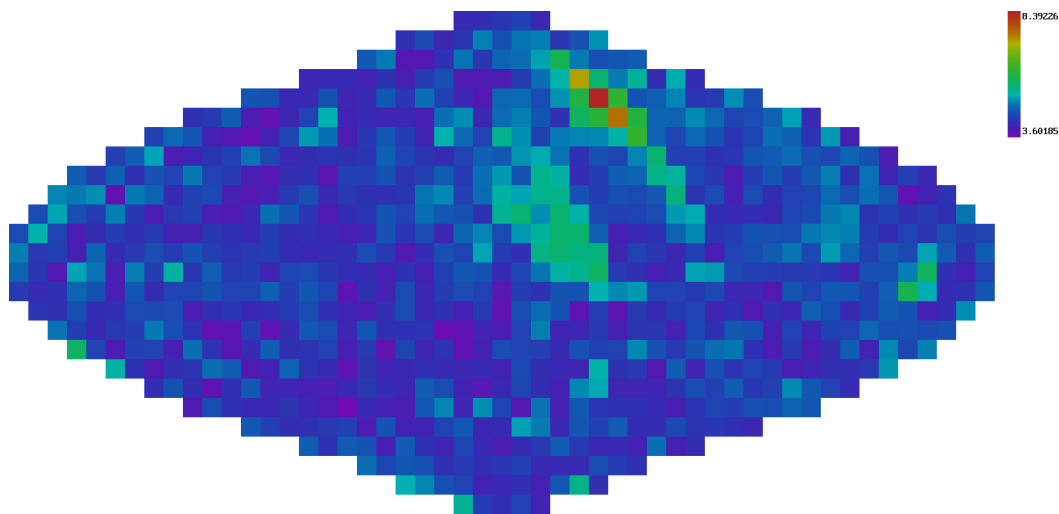


Figure 12: Example skymap of signal-to-noise ratios using single-bin Power-Flux2 mode. The injection was performed at RA=2.0 and DEC=1.0. Each square corresponds to a sky patch - a set of templates that used the same amplitude response coefficients.

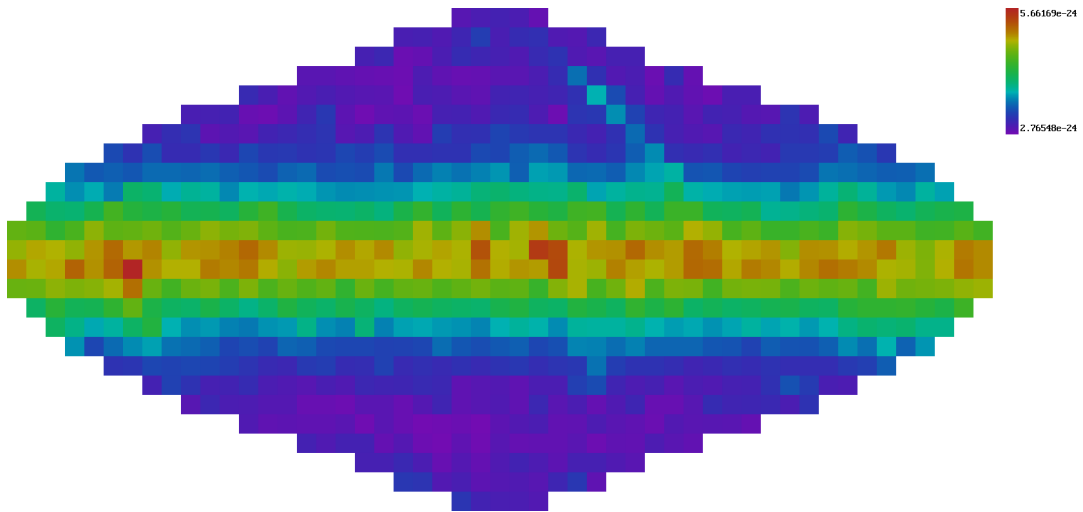


Figure 13: Example skymap of upper limits using single-bin PowerFlux2 mode. The injection was performed at RA=2.0 and DEC=1.0 and is barely visible, compared to equatorial points where we are less sensitive.

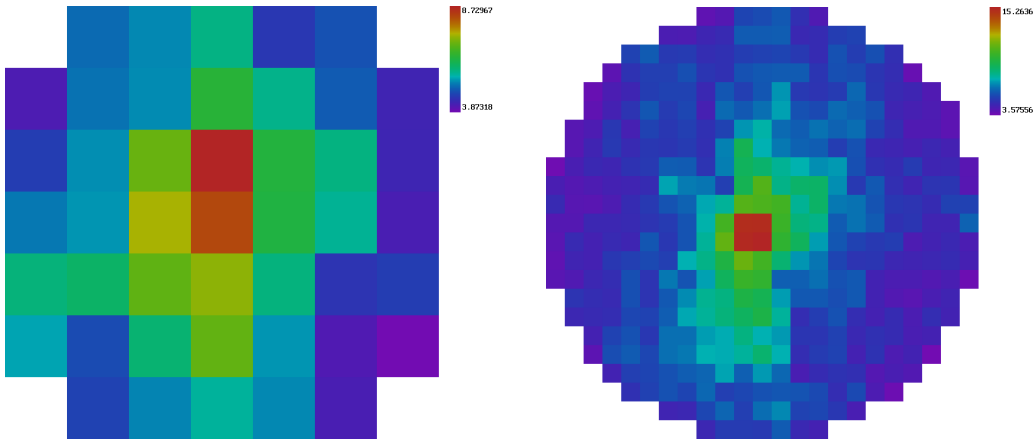


Figure 14: Zoomed view of the injection. The area displayed in both pictures is a disk with 0.3 radians radius centered at the location of the outlier of figure 12. The left image has been made with single-bin code. The right image was produced by loosely coherent code using  $\delta = \pi/2$  and `sky-resolution-ratio=0.25`.

## 9 Running PowerFlux on the cluster

The monolithic PowerFlux binary adapts readily to running on multiple CPUs. The simplest way to use more computing power is to start a multi-threaded version on machine with many cores. It will automatically utilize as many cores as are available, while sharing input and output arrays between different threads.

If condor controlled cluster is available it is best to run condor-enabled version of PowerFlux under “standard” universe which enables checkpointing. In this configuration it is feasible to have individual instances run complete over a few days with the entire analysis taking weeks or months. One drawback of this approach is that since we are running single-threaded each instance needs its own input and output arrays which can take 2 GB or more of memory. If memory consumption is a problem the sky can be partitioned into slices to reduce the size of internal skymaps - but there is no workaround if you are dominated by the size of the input data.

Once the analysis is complete the log files `powerflux.log` and `data.log`

should be used to extract upper limits, signal-to-noise ratios, outliers and other statistics.

A number of scripts make setting up dags and collecting data easy. They are stored in the `scripts` subdirectory in PowerFlux tree and should be used as a guide for setting up new analysis.

In particular, the following scripts can be of use:

- `make_run.tcl` - generate dag and other supporting files for PowerFlux analysis run.
- `make_1800_sfts.tcl` - generate dag for producing PowerFlux-style Hann windowed SFTs.
- `normalize_sft_name.tcl` - rename SFTs in accordance with common LDR usage.
- `make_native_sft_injection_run.tcl` - generate dag and supporting files for software injection run.
- `archive.tcl` - compress one or more directories in tarball for archiving. This is done in background. The original directory can be removed on successful completion.
- `find_outlier_matches.tcl` - compile the initial list of coincident outliers from PowerFlux `data.log` file. This is done with very loose constraints to reduce the amount of data to more manageable (several GB) size.
- `make_outlier_histogram.tcl` - compute outlier histogram data from `powerflux.log` file.

The collected data can easily exceed 10 GB for a large run. At these size loading into analysis program such as R is awkward (though possible) and it is best to first upload the data to a database (such as MySQL) and then analyze one frequency band at a time.

## 10 PowerFlux configuration options

When started with `--help` option PowerFlux prints out a summary of available command line switches:

powerflux 1.4.47-64

Powerflux analysis program

Usage: powerflux [OPTIONS]...

-h, --help	Print help and exit
-V, --version	Print version and exit
-c, --config=STRING	configuration file (in gengetopt format) to pass parameters
--label=STRING	arbitrary string to be printed in the beginning of PowerFlux log file (default='')
--sky-grid=STRING	sky grid type (arcsin, plain_rectangular, sin_theta) (default='sin_theta')
--skymap-orientation=STRING	orientation of produced skymaps: equatorial, ecliptic, band_axis (default='equatorial')
--skyband-method=STRING	method of assigning band numbers: angle, S (default='S')
--nskybands=INT	split sky in this many bands for logging maximum upper limits (default='11')
--large-S=DOUBLE	value of S to consider good enough
--band-axis=STRING	which band axis to use for splitting sky into bands (perpendicular to band axis) (possible values: equatorial, auto, explicit(float,float,float) (default='auto'))
--band-axis-norm=DOUBLE	norm of band axis vector to use in S value calculation
--sky-marks-file=STRING	file describing how to mark up a sky
--fine-factor=INT	make fine grid this times finer (default='5')
--skymap-resolution=DOUBLE	specify skymap resolution explicitly
--skymap-resolution-ratio=DOUBLE	adjust default coarseness of the grid by this factor (default='1.0')
--small-weight-ratio=DOUBLE	ratio that determines which weight is too small to include in max statistics (default='0.2')
--strain-norm-factor=DOUBLE	strain normalization factor to prevent



```

                                overflowing of the exponent
                                (default='1e-20')
--lock-file=STRING              file to lock when reading SFTs in order to
                                globally serialize disk access
--enable-dataset-locking=INT    set to 1 to enable dataset level locking
                                (default='1')
--retry-delay=INT              number of seconds to wait before retrying I/O
                                (default='2')
--lock-retry-delay=INT         number of seconds to wait before trying to
                                acquire lock again (default='10')
-s, --dataset=STRING           dataset file
-i, --initial-dataset-seed=INT  initial seed to use for generating gaussian
                                data (default='12345')
--input-format=STRING          format of input files (GEO, SFT, Power)
                                (default='GEO')
--dump-data=STRING             file to output loaded SFT data into, for
                                testing
--dump-sftv2=STRING           directory to output loaded data, together with
                                dataset description
-o, --output=STRING            output directory
--flat-output=STRING           output directory to contain all files, with no
                                subdirectories (for globus condor)
--ephemeris-path=STRING        path to detresponse program from lalapps
--earth-ephemeris=STRING       Earth ephemeris file, overrides ephemeris-path
                                argument
--sun-ephemeris=STRING         Sun ephemeris file, overrides ephemeris-path
                                argument
-f, --first-bin=INT            first frequency bin in the band to be analyzed
-n, --nbins=INT                number of frequency bins to analyze
                                (default='501')
--side-cut=INT                 number of extra bins to load to accomodate
                                doppler shifts and spindown
--extra-side-cut=INT           number of extra bins to load in addition to
                                side-cut computed automatically
                                (default='0')
--expected-timebase=DOUBLE     expected timebase in months (default='6')
--hist-bins=INT                number of bins to use when producing histograms

```

```

                                (default='200')
-d, --detector=STRING          detector location (i.e. LHO or LLO), passed to
                                detresponse
--doppler-multiplier=DOUBLE    a constant to multiply Doppler shifts by (1.0
                                corresponds to standard physics)
                                (default='1.0')
--dInv=DOUBLE                  inverse distance to expected source in seconds
                                (default='0.0')
--spindown-start-time=DOUBLE   specify spindown start time in GPS sec. Assumed
                                to be the first SFT segment by default
--frequency-offset=DOUBLE     (small) frequency offset - used to achieve
                                fractional bin shifts (default='0.0')
--spindown-start=DOUBLE        first spindown value to process
                                (default='0.0')
--spindown-step=DOUBLE         step for processing multiple spindown values
                                (default='5e-10')
--spindown-count=INT           how many separate spindown values to process
                                (default='1')
--fdotdot=DOUBLE              second frequency derivative (default='0.0')
--orientation=DOUBLE          additional orientation phase, specifying 0.7853
                                will turn plus into cross (default='0')
--nlinear-polarizations=INT    even number of linear polarizations to profile,
                                distributed uniformly between 0 and PI/2
                                (default='4')
--no-demodulation=INT         do not perform demodulation stage, analyze
                                background only (default='0')
--no-decomposition=INT        do not perform noise decomposition stage,
                                output simple statistics only (default='0')
--no-candidates=INT           do not perform analysis to identify candidates
                                (default='0')
--no-am-response=INT          force AM_response() function to return 1.0
                                irrespective of the arguments (default='0')
--no-secondary-skymaps=INT    do not store values not essential for upper
                                limits and followup (default='0')
--averaging-mode=STRING       1 - use one bin, 3 - average 3, matched - use 7
                                bin matched filter (default='1')

```

```

--subtract-background=INT subtract rank 1 matrix in order to flatten
                           noise spectrum (default='0')
--do-cutoff=INT            neglect contribution from SFT with high
                           effective noise level (default='1')
--filter-lines=INT        perform detection of lines in background noise
                           and veto corresponding frequency bins
                           (default='1')
--ks-test=INT             perform Kolmogorov-Smirnov test for normality
                           of averaged powers (default='1')
--compute-betas=INT       compute beta coefficients as described in
                           PowerFlux polarizations document
                           (default='0')
--upper-limit-comp=STRING upper limit compensation factor - used to
                           account for windowing in SFTs (possible
                           values: Hann, flat, arbitrary number)
                           (default='Hann')
--lower-limit-comp=STRING lower limit compensation factor - used to
                           account for windowing in SFTs (possible
                           values: Hann, flat, arbitrary number)
                           (default='Hann')
--write-dat=STRING        regular expression describing which *.dat files
                           to write (default='.*')
--write-png=STRING        regular expression describing which *.png files
                           to write (default='.*')
--dump-points=INT         output averaged power bins for each point in
                           the sky (default='0')
--dump-candidates=INT     output SFT data for first N candidates
                           (default='0')
--focus-ra=DOUBLE        focus computation on a circular area with
                           center at this RA
--focus-dec=DOUBLE       focus computation on a circular area with
                           center at this DEC
--focus-radius=DOUBLE    focus computation on a circular area with this
                           radius
--only-large-cos=DOUBLE   restrict computation to points on the sky with
                           cos of angle to band axis larger than a given
                           number

```

Group: injection

```

--fake-linear             Inject linearly polarized fake signal

```

```

--fake-circular           Inject circularly polarized fake signal
--fake-ref-time=DOUBLE   time of signal start (default='0')
--fake-ra=DOUBLE         RA of fake signal to inject (default='0.0')
--fake-dec=DOUBLE        DEC of fake signal to inject (default='0.0')
--fake-iota=DOUBLE       iota of fake signal to inject (default='0.0')
--fake-psi=DOUBLE        orientation of fake signal to inject
                          (default='0.0')
--fake-phi=DOUBLE        phase of fake signal to inject (default='0.0')
--fake-spindown=DOUBLE   spindown of fake signal to inject
                          (default='0.0')
--fake-strain=DOUBLE     amplitude of fake signal to inject
                          (default='0.0')
--fake-freq=DOUBLE       frequency of fake signal to inject
--fake-dInv=DOUBLE       inverse distance to source of fake signal in
                          seconds (default='0.0')
--fake-freq-modulation-depth=DOUBLE
                          depth of additional sinusoidal frequency
                          modulation in Hz (default='0.0')
--fake-freq-modulation-freq=DOUBLE
                          frequency of additional sinusoidal frequency
                          modulation (default='1.0')
--fake-freq-modulation-phase=DOUBLE
                          phase of additional sinusoidal frequency
                          modulation (default='0.0')
--fake-phase-modulation-depth=DOUBLE
                          depth of additional sinusoidal phase modulation
                          in radians (default='0.0')
--fake-phase-modulation-freq=DOUBLE
                          frequency of additional sinusoidal phase
                          modulation (default='0.0')
--fake-phase-modulation-phase=DOUBLE
                          phase of additional sinusoidal phase modulation
                          (default='0.0')
--fake-injection-window=INT
                          compute this number of frequency bins to the
                          left and right of the central frequency
                          (default='5')
--snr-precision=DOUBLE   Assumed level of error in detection strength -
                          used for listing candidates (default='0.2')
--max-candidates=INT     Do not optimize more than this number of

```

candidates (default='1')  
 --min-candidate-snr=DOUBLE Do not optimize candidates with SNR below this level (default='5.0')  
 --output-initial=INT write initial candidates into log file (default='0')  
 --output-optimized=INT write optimized (second pass) candidates into log file (default='0')  
 --output-cache=INT write out all candidates in cache to log file (default='0')  
 --extended-test=INT Perform extended self test (default='0')  
 --max-sft-report=INT Maximum count of SFTs to report with veto information (default='100')  
 --num-threads=INT Use that many threads for computation (default='1')  
 --niota=INT Number of iota values to use in alignment grid (default='3')  
 --npsi=INT Number of psi values to use in alignment grid (default='6')  
 --nfshift=INT Number of sub-bin frequency shifts to sample (default='2')  
 --nchunks=INT Partition the timebase into this many chunks for sub period analysis (default='5')  
 --split-ifos=INT Split interferometers in separate chunks (default='1')  
 --weight-cutoff-fraction=DOUBLE Discard sfts with small weights that contribute this fraction of total weight (default='0.04')  
 --per-dataset-weight-cutoff-fraction=DOUBLE Discard sfts with small weights that contribute this fraction of total weight in each dataset (default='0.04')  
 --power-max-median-factor=DOUBLE This determines scaling factor between median and maximum of exponentially distributed variable. Used for computing power sum weights (default='0.1')  
 --tmedian-noise-level=INT Use TMedians to estimate noise level (as opposed to in-place standard deviation)

```

                                (default='1')
--summing-step=DOUBLE           integration step size, in seconds
--max-first-shift=INT           larger values accomodate bigger spindown ranges
                                but require more bins to be computed in
                                uncached function (default='10')
--statistics-function=STRING    specify statistics postprocessing to apply.
                                Possible values: linear, sorted
                                (default='linear')
--dump-power-sums=INT          Write out all power sum data into data.log
                                file. It is recommend to restrict the sky to
                                very few pixels (default='0')
--compute-skymaps=INT          allocate memory and compute skymaps with final
                                results (default='0')
--fine-grid-skymarks=INT       use sky marks from the fine grid, this uses
                                constant spindown (default='0')
--half-window=INT              number of bins to exclude to the left and to
                                the right of highest point when computing
                                linear statistics (default='20')
--tail-veto=INT                do not report outlier if its frequency is
                                within that many bins from the tail - happens
                                with steep spectrum (default='10')
--cache-granularity=INT        granularity of power cache frequency shift
                                resolution, in fractions of a frequency bin
                                (default='-1')
--sidereal-group-count=INT      separate SFTs in that many groups by frequency
                                shift
--time-group-count=INT          separate SFTs in that many groups by gps time
--phase-mismatch=DOUBLE         maximal phase mismatch over coherence length to
                                assume when using loosely coherent mode
                                (default='1.570796')
--bypass-powersum-cache=INT     bypass partial power sum cache (default='0')
--compute-cross-terms=INT       compute imaginary cross terms in loosely
                                coherent search (default='0')
--preallocate-memory=DOUBLE     preallocate this many gigabytes of memory for
                                future usage (default='0.0')
--memory-allocation-retries=INT

```

	number of times to retry allocating memory before giving up (default='1000')
--sse=INT	use hand-coded SSE optimizations (default='1')
--extra-phase=STRING	shift data of all datasets matching regexp by this phase (specify in degrees as ".*H1.* 45.3")

## 10.1 config

Specify the first part of SFT file name. The complete name is formed by appending an SFT number to the end.

Instead of specifying arguments on the command line it is possible to create a file with each line containing option value pair. The "-" prefix in front of the option name must to be omitted.

In the following PowerFlux options would be referred by their name as used in the configuration file, for command line use prepend "--".

## 10.2 Input/Output options

### 10.2.1 config

Configuration file with more options. This can be supplied more than once.

### 10.2.2 dataset

Specify file containing description of the data to load.

### 10.2.3 input-format

Specify the format of input SFT files.

- **Power** refers to ASCII header binary body power-only files produces by `make_sft_op`
- **SFT** refers to ASCII header binary body SFT files produced by `make_sft_op`
- **GEO** refers to binary header binary body GEO-style SFT files in common use in LSC.

#### 10.2.4 segments-file

Allows to restrict processing to only SFT files that are inside a list of segments described in the ASCII file specified with this option.

Each line specifies a single segment described the starting GPS time followed by ending GPS time. The rest of line is discarded (this makes possible to use standard segment list files).

#### 10.2.5 veto-segments-file

Same as `segments-file` except this option specifies the list of times **not** to process. Useful for vetoing parts of data.

#### 10.2.6 ephemeris-path

Path to files with ephemeris data (they can be found, for example, in `lalapps/src/detresponse/` directory).

#### 10.2.7 earth-ephemeris

Specify Earth ephemeris file explicitly. This overrides `ephemeris-path` option.

#### 10.2.8 sun-ephemeris

Specify Sun ephemeris file explicitly. This overrides `ephemeris-path` option.

#### 10.2.9 skymarks

Specify file describing sky partitioning into areas for data collection.

#### 10.2.10 output

Specify directory to put output of PowerFlux into. Everything that PowerFlux writes will be located in this directory.

#### 10.2.11 extra-phase

Apply additional phase corrections to all data sets matching a regular expression. This option can be specified multiple times as “`regexp DEGREES`”.



## 10.3 Analysis parameters

### 10.3.1 `first-bin`

Specify first bin of 501 bin stretch to analyze. This is an integer in units of 1/1800 Hz. It specifies the *source* (i.e. decoded) frequency, not frequency as received by the detector.

### 10.3.2 `nbins`

Number of frequency bins to analyze. The default is 501. At the moment this value should not be changed - there are some hard-coded constants that rely on this number. In particular, the Feldman-Cousins method relies on constants produced by Monte-Carlo simulation on the assumption that `nbins=501`.

### 10.3.3 `side-cut`

Due to the need to apply Doppler shift the actual number of bins read from SFT file is larger than `nbins` and varies with frequency and spindown. Normally PowerFlux will compute the number of extra bins to read automatically. This option allows an explicit override. Specifying `--side-cut=100` will cause PowerFlux to read all bins from `first-bin-100` to `first-bin+nbins+100`.

### 10.3.4 `extra-side-cut`

Load this many additional bins on the left and right of the frequency band in addition to `side-cut` parameter.

### 10.3.5 `spindown-start`

Specify initial spindown value to process. It is a floating-point value in units of Hz/sec. Negative values correspond to frequency decreasing with time.

### 10.3.6 `spindown-count`

Specify the number of spindown values to process starting with value specified by `spindown-start` option.

### **10.3.7 spindown-step**

Specify the increment between spindown values to process. Can be positive or negative.

### **10.3.8 nfshift**

Number of sub-bin steps to sample. The frequency resolution will in units of  $1/\text{nfshift}$  of frequency bin.

### **10.3.9 nchunks**

Break up the loaded dataset into **nchunks** equally spaced segments and report results for any contiguous combination.

### **10.3.10 niota**

Sample  $\text{niota} + 1$  values, including 0 (for circular polarization) and  $\pi/2$  (for linear polarization).

### **10.3.11 npsi**

Sample **npsi** orientation values. The total number of polarizations sampled is  $\text{npsi} \cdot \text{niota} + 1$ , as circular polarization does not depend on  $\psi$ .

### **10.3.12 phase-mismatch**

Maximum allowable phase mismatch for loosely coherent searches.

### **10.3.13 doppler-multiplier**

An additional multiplier to apply to Doppler shifts. This is equivalent to adjusting the speed of gravitational waves. This should be set to the default value of 1.0 for loosely coherent modes.

### **10.3.14 dInv**

Inverse distance to expected source in seconds. This is only used by loosely coherent modes which are phase sensitive.

### **10.3.15** `compute-cross-terms`

Compute imaginary part of amplitude response for loosely coherent statistic. This is a 5% effect for circularly polarized signals is 0 for linearly polarized ones.

## **10.4** `Analysis options`

### **10.4.1** `no-demodulation`

Do not perform demodulation, stop after analyzing background. Since Feldman-Cousins is not performed `nbins` can be specified to an arbitrary number, although values exceeding 25 Hz require lots of computer memory (in excess of 2 Gb).

It is convenient to specify `--side-cut=0` to provide greater control over starting frequency.

### **10.4.2** `no-decomposition`

Only read in SFT files and output simple statistics. This is even faster than `no-demodulation` option. Same suggestions apply.

### **10.4.3** `no-am-response`

Assume that amplitude response is always 1.0 irrespective of time or sky position.

### **10.4.4** `skymap-resolution`

PowerFlux computes optimal resolution of skymaps automatically (It depends mostly on magnitude of Doppler shifts). This options allows to specify resolution explicitly skymaps. This option is very handy for comparing PowerFlux skymap output for different frequency bands.

### **10.4.5** `skymap-resolution-ratio`

PowerFlux computes optimal resolution of skymaps automatically (It depends mostly on magnitude of Doppler shifts). This options allows to force skymaps to have a finer or coarser resolution by a given factor.

#### 10.4.6 `small-weight-ratio`

PowerFlux discards data in weighted sum that is assigned too small a weight. This option allows to specify it.

For a perfect instrument setting this ratio to 0 will produce the best result as the weighting scheme used will make good use even of data with very small weights.

In practice, discarding SFTs saves CPU cycles so it makes sense to skip those which provide marginal improvement.

Furthermore, the SFTs with small weight can often have radically different noise spectrum. The default value is prudent 0.2.

#### 10.4.7 `three-bins`

Specifying `three-bins=1` causes PowerFlux to average every neighbouring three bins in its analysis. Because of this Doppler tracks are widened and a coarser skymaps may be used while still retaining full sky coverage.

The drawback is a factor of  $\sqrt{2}$  loss in sensitivity.

#### 10.4.8 `do-cutoff`

Enabled by default. Setting it to 0 will turn off Cutoff computation. This is similar to specifying `--small-weight-ratio=0.0`

#### 10.4.9 `filter-lines`

Perform automatic detection of lines in background noise and veto corresponding frequency bins. Up to 5 frequency bins can be vetoed.

#### 10.4.10 `subtract-background`

Subtract rank 1 matrix formed from `TMedians` and `FMedians` in order to improve noise performance for sky positions with large variation in Doppler shifts. Turning this option on will clobber signals from sky positions with small variation in Doppler shifts, therefore one should combine it with `only-large-cos=0.3`.

#### 10.4.11 `sse`

Use SSE optimized code. This option is on by default.

#### 10.4.12 `preallocate-memory`

Preallocate this many gigabytes of memory at the beginning of the program. This also turns off the use of `mmap` for managing large memory blocks. Useful when running on machines with competing large memory processes to prevent condor from failing in low memory conditions.

#### 10.4.13 `memory-allocation-retries`

When low on memory retry this many times before giving up. Only applies to PowerFlux code - external code such as condor can still crash. This will tie up the low-memory node until memory becomes available.

### 10.5 Data reporting options

#### 10.5.1 `skymap-orientation`

The skymaps produced by PowerFlux can have different orientations to please the user. Possible choices are equatorial, ecliptic or "band-axis" - with band axis vector pointing to the North pole.

#### 10.5.2 `nskybands`

Split sky in a given number of bands and report analysis results for each band individually.

#### 10.5.3 `skyband-method`

Specify method used to partition sky into regions.

Possible values are `angle` and `S`. The latter method is useful on short timebases, while the former can used to partition the sky into bands along declination.

#### 10.5.4 `band-axis`

By default PowerFlux computes optimal band axis automatically (this has to do with average detector acceleration during analyzed data set). However, it may be useful to specify it explicitly - for example for comparison of results between different interferometers.

Possible values are `equatorial`, `auto` and `explicit(%f,%f,%f)`.

### **10.5.5** `band-axis-norm`

Specify the norm of band axis vector explicitly. This is useful for comparison of results between different IFOs.

### **10.5.6** `large-S`

Specify values of S function considered to be good enough. All sky points with S value larger or equal to this value will be assigned to band 0.

### **10.5.7** `only-large-cos`

Restrict computation to only those areas of sky which projection to band axis has absolute value larger than a value specified to this option. If you want to do this (due to presence of line artifacts, for example) the recommended value is 0.3.

This cleans up the results reported for entire skymap and can significantly reduce computation time requirements.

### **10.5.8** `ks-test`

Perform and output results of Kolmogorov-Smirnov test for compliance of averaged weighted power with gaussian distribution with parameters employed later to establish Feldman-Cousins limits. This increases the computation time, but is a highly recommended cross check for analysis. High values of KS statistic indicate bands with pathological noise floor behaviour.

### **10.5.9** `upper-limit-comp`

A factor to multiply upper limits reported in strain units. One can specify a floating-point number or "Hann" for Hann windowed SFTs. This factor is used to account for the fact that non bin-centered (in frequency) signals would have smaller amplitude than bin-centered ones. For Hann windowed SFTs, using 1-bin mode the factor is 1/0.85.

### **10.5.10** `lower-limit-comp`

A factor to multiply lower limits reported in strain units. One can specify a floating-point number or "Hann" for Hann windowed SFTs. This factor is used to account for the fact that non bin-centered (in frequency) signals

would have smaller amplitude than bin-centered ones. For Hann windowed SFTs, using 1-bin mode the factor is 1.

#### **10.5.11 write-dat**

By default PowerFlux writes a binary file with data for each plot it makes. You can use this option to specify a regular expression to filter what will actually be written.

This can significantly reduce storage requirements for PowerFlux output, as well as speed up computation.

#### **10.5.12 write-png**

By default PowerFlux creates a number of plots. You can use this option to specify a regular expression to filter what will actually be written.

This can significantly reduce storage requirements for PowerFlux output, as well as speed up computation.

### **10.6 Software injections**

The following options provide interface to software injections done by PowerFlux itself (as opposed to using external programs). The injections are power-only, modeled with assumption of random phase of incoming signal to a particular frequency bin.

#### **10.6.1 fake-linear**

Perform injection of linearly polarized signal.

#### **10.6.2 fake-circular**

Perform injection of circularly polarized signal.

#### **10.6.3 fake-ra**

Specify right ascension of injected signal source in radians (values from 0 to  $2\pi$  are acceptable).

#### **10.6.4 fake-dec**

Specify declination of injected signal source in radians (values from  $-\pi/2$  to  $\pi/2$  are acceptable).

#### **10.6.5 fake-orientation**

Specify polarization of injected signal (assumed to be linearly polarized). Valid values are between 0 and  $\pi/4$ .

#### **10.6.6 fake-spindown**

Specify spindown of injected signal in units of Hz/sec.

#### **10.6.7 fake-strain**

Specify strain of injected signal.

#### **10.6.8 fake-freq**

Specify frequency of injected signal.

#### **10.6.9 fake-dInv**

Specify inverse distance to source of injected signal.

#### **10.6.10 fake-freq-modulation-depth**

Specify modulation depth  $A$  of injected signal frequency according to the formula  $A \sin(2\pi f_m t + \phi)$ .

#### **10.6.11 fake-freq-modulation-freq**

Specify modulation frequency  $f_m$  of injected signal frequency according to the formula  $A \sin(2\pi f_m t + \phi)$ .

#### **10.6.12 fake-freq-modulation-phase**

Specify modulation phase  $\phi$  of injected signal frequency according to the formula  $A \sin(2\pi f_m t + \phi)$ .



### 10.6.13 fake-phase-modulation-depth

Specify modulation depth  $A$  of injected signal phase according to the formula  $A \sin(2\pi f_m t + \phi)$ .

### 10.6.14 fake-phase-modulation-freq

Specify modulation frequency  $f_m$  of injected signal phase according to the formula  $A \sin(2\pi f_m t + \phi)$ .

### 10.6.15 fake-phase-modulation-phase

Specify modulation phase  $\phi$  of injected signal phase according to the formula  $A \sin(2\pi f_m t + \phi)$ .

## 11 Appendix A: example configuration files

```
dataset random.dst
input-format GEO
earth-ephemeris earth05-09.dat
sun-ephemeris sun05-09.dat
sky-marks all_sky_marks.txt
first-bin 180000
nbins 501
do-cutoff 1
filter-lines 1
averaging-mode one
spindown-start-time 793154935
spindown-start -1e-8
expected-timebase 7

write-dat NONE
#write-png NONE
subtract-background 1
ks-test 1
compute-betas 0
output-initial 1
max-candidates 0

fake-ref-time 793154935
fake-ra 2.0
fake-dec 1.0
fake-iota 1.570796
fake-psi 0.392699
fake-phi 0.0
fake-spindown -1e-8
fake-strain 3e-24
fake-freq 100.1389

skymap-resolution-ratio 1

compute-skymaps 1

initial-dataset-seed 0

nchunks 1
fine-factor 5

output single_bin
```

Figure 15: config.single\_bin

```
dataset random.dst
input-format GEO
earth-ephemeris earth05-09.dat
sun-ephemeris sun05-09.dat
sky-marks all_sky_marks.txt
sky-grid targeted_rectangular
first-bin 180000
nbins 501
do-cutoff 1
filter-lines 1
averaging-mode one
spindown-start-time 793154935
spindown-start -1e-8
expected-timebase 7

write-dat NONE
#write-png NONE
subtract-background 1
ks-test 1
compute-betas 0
output-initial 1
max-candidates 0

fake-ref-time 793154935
fake-ra 2.0
fake-dec 1.0
fake-iota 1.570796
fake-psi 0.392699
fake-phi 0.0
fake-spindown -1e-8
fake-strain 3e-24
fake-freq 100.1389

focus-ra 1.978040
focus-dec 1.009798
focus-radius 0.3

skymap-resolution-ratio 1

compute-skymaps 1

initial-dataset-seed 0

nchunks 1
fine-factor 5

output single_bin_zoomed
```

Figure 16: config.single\_bin\_zoomed

```
dataset random.dst
input-format GEO
earth-ephemeris earth05-09.dat
sun-ephemeris sun05-09.dat
sky-marks all_sky_marks.txt
sky-grid targeted_rectangular
first-bin 180000
nbins 501
do-cutoff 1
filter-lines 0
averaging-mode single_bin_loose
spindown-start-time 793154935
spindown-start -1e-8

expected-timebase 7
write-dat NONE
#write-png NONE
subtract-background 1
ks-test 1
compute-betas 0
output-initial 1
max-candidates 0

fake-ref-time 793154935
fake-ra 2.0
fake-dec 1.0
fake-iota 1.570796
fake-psi 0.392699
fake-phi 0.0
fake-spindown -1e-8
fake-strain 3e-24
fake-freq 100.1389

focus-ra 1.978040
focus-dec 1.009798
focus-radius 0.3
skymap-resolution-ratio 0.25

compute-skymaps 1

initial-dataset-seed 0

nchunks 1
fine-factor 5

output loose_pi_2
```

Figure 17: config.loose\_pi\_2

```

#
# Mark general sky areas
#
band "south" "" 0.0 1.570796 -2.0 -0.65
band "midsouth" "" 0.0 1.570796 -0.65 -0.3
band "equator" "" 0.0 1.570796 -0.3 0.3
band "midnorth" "" 0.0 1.570796 0.3 0.65
band "north" "" 0.0 1.570796 0.65 2.0

#
# Using J2000, equatorial coordinates
# All numbers in radians
#
#disk "North_pole" "" 4.712389 1.16 0.05
#disk "South_pole" "" 1.570796 -1.16 0.05
line_response "Lines" "" 0.05 3

# Mask
#band "" "" 1.570796 0.0 -2 0
#band "" "" 2.199115 0.0 0 2

```

Figure 18: all\_sky\_marks.txt

```

new_dataset "H1_test1"
detector "LHO"
gaussian_fill 793154935 900 20001 1e-24
apply_hanning_filter

```

Figure 19: random.dst

## References

- [1] V. Dergachev, “Description of PowerFlux Algorithms and Implementation”, LIGO technical document LIGO-T050186 (2005), available in <http://admbdsvr.ligo.caltech.edu/dcc/>
- [2] All-sky search for periodic gravitational waves in LIGO S4 data, B. Abbott *et al.* (The LIGO Scientific Collaboration), *Phys. Rev. D* **77**, 022001 (2008).
- [3] All-sky LIGO Search for Periodic Gravitational Waves in the Early S5 Data, B. Abbott *et al.* (The LIGO Scientific Collaboration), *Phys. Rev. Lett.* 102, 111102 (2009)
- [4] Unified approach to the classical statistical analysis of small signals, G. J. Feldman and R. D. Cousins, *Phys. Rev. D* **57**, 3873 (1998).
- [5] On blind searches for noise dominated signals: a loosely coherent approach, Vladimir Dergachev, arXiv:1003.2178v1 [gr-qc]

- [6] Data analysis of gravitational-wave signals from spinning neutron stars. I. The signal and its detection. P. Jaranowski, A. Królak, and B. F. Schutz, *Phys. Rev. D* **58**, 063001 (1998).
- [7] V. Dergachev and K. Riles, “PowerFlux Polarization Analysis“ LIGO Technical Document LIGO-T050187 (2005), available in <http://admbsrv.ligo.caltech.edu/dcc/>
- [8] Using generalized PowerFlux methods to estimate the parameters of periodic gravitational waves, Gregory Mendell and Karl Wette, *Class. Quantum Grav.* 25 (2008) 114044
- [9] First upper limits from LIGO on gravitational wave bursts, B. Abbott *et al.* (The LIGO Scientific Collaboration), *Phys. Rev. D* **69** 102001 (2004).
- [10] Limits on Gravitational-Wave Emission from Selected Pulsars Using LIGO Data B. Abbott *et al.* (The LIGO Scientific Collaboration), M. Kramer, and A. G. Lyne, *Phys. Rev. Lett.* **94** 181103 (2005).
- [11] Upper limits on gravitational wave emission from 78 radio pulsars B. Abbott *et al.* (The LIGO Scientific Collaboration), M. Kramer, and A. G. Lyne, *Phys Rev. D* **76**, 042001 (2007).
- [12] Searches for periodic gravitational waves from unknown isolated sources and Scorpius X-1: Results from the second LIGO science run B. Abbott *et al.* (The LIGO Scientific Collaboration), *Phys. Rev. D* 76 (2007) 082001
- [13] The Einstein@Home project is built upon the BOINC (Berkeley Open Infrastructure for Network Computing) architecture described at <http://boinc.berkeley.edu/>.
- [14] Einstein@Home search for periodic gravitational waves in LIGO S4 data, B. Abbott *et al.* (The LIGO Scientific Collaboration), *Phys. Rev. D* 79, 022001 (2009)
- [15] Einstein@Home search for periodic gravitational waves in early S5 LIGO data, B. Abbott *et al.* (The LIGO Scientific Collaboration), arXiv:0905.1705
- [16] Bernard F.Schutz (1990). A first course in general relativity. Cambridge University Press.

- [17] C. W. Misner, K. S. Thorne, and J. A. Wheeler (1973). Gravitation. W. H. Freeman and Co.
- [18] Peter R.Saulson (1994). Fundamentals of interferometric gravitational wave detectors. World Scientific.
- [19] Making  $h(t)$  for LIGO, Xavier Siemens, Bruce Allen , Jolien Creighton , Martin Hewitson, Michael Landry, 2004 Class. Quantum Grav. 21 S1723-S1735