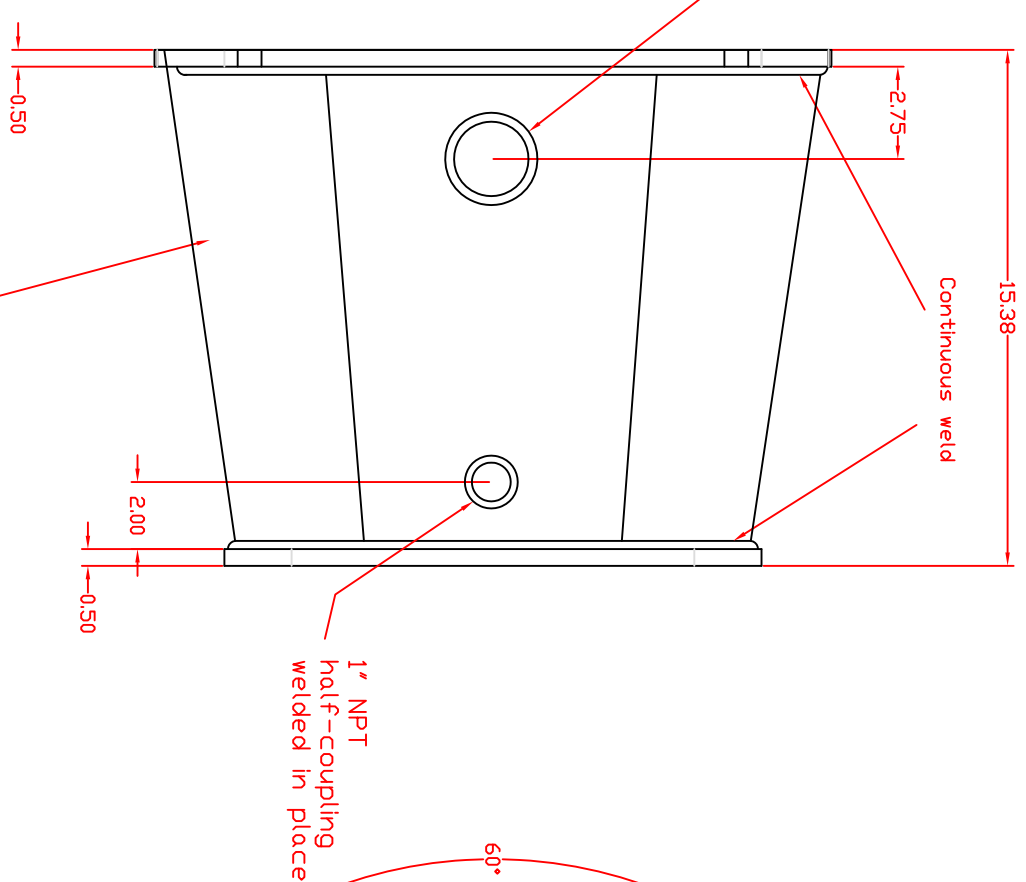


Bottom View

2" NPT
half-coupling
welded in place

Drill thru $\frac{5}{8}$ dia.
(3 pcs.)

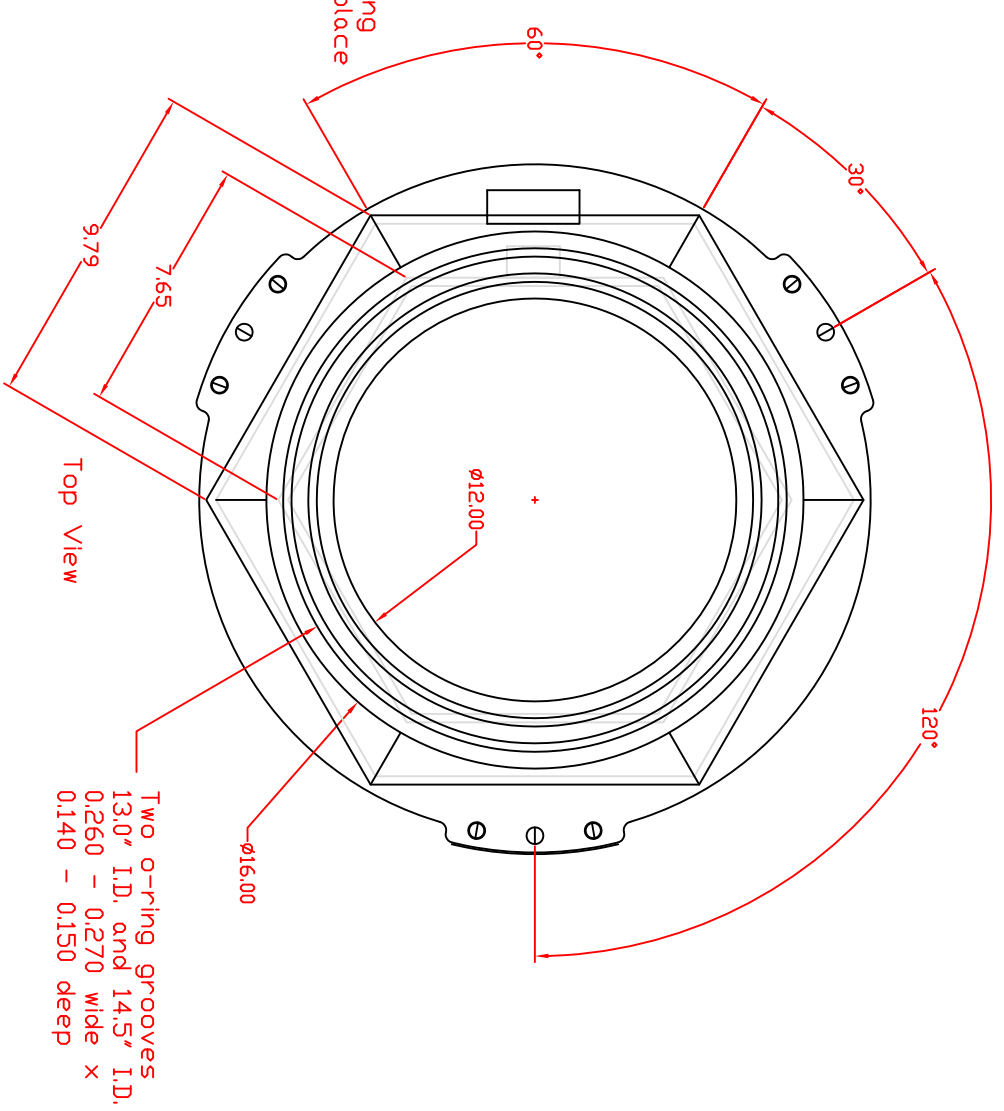
Tap thru $3/8$ -16
(6 pcs.)



Continuous weld

1" NPT
half-coupling
welded in place

0.25" wall
bump formed in two pieces and welded
ends centered on top
and bottom rings
top center diameter 14"
bottom center diameter 18"



Top View

Two o-ring grooves
13.0" I.D. and 14.5" I.D.
0.260 - 0.270 wide x
0.140 - 0.150 deep

- Notes:
- 1) Material: Steel
 - 2) Top and bottom rings can be cut from the same plate (i.e. top ID < bottom ID).
 - 3) Top surface flatness $\pm .005$
 - 4) Powder coat outside white. Mask top and bottom surfaces.
 - 5) Quantity: 6 ea.

ALIGD PSL/ID Optical
Table Leg v.5a
R. Savage April 24, 2010