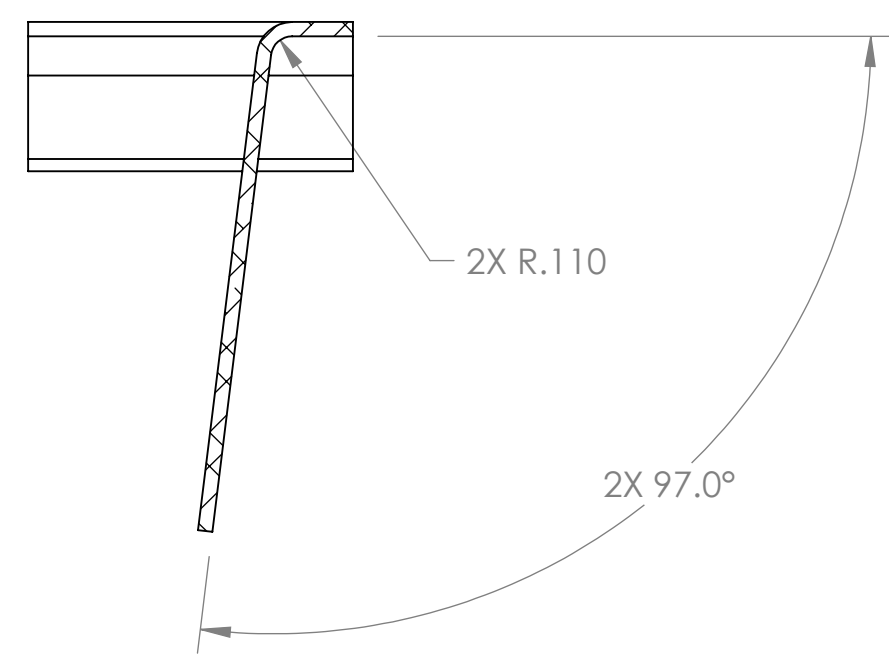
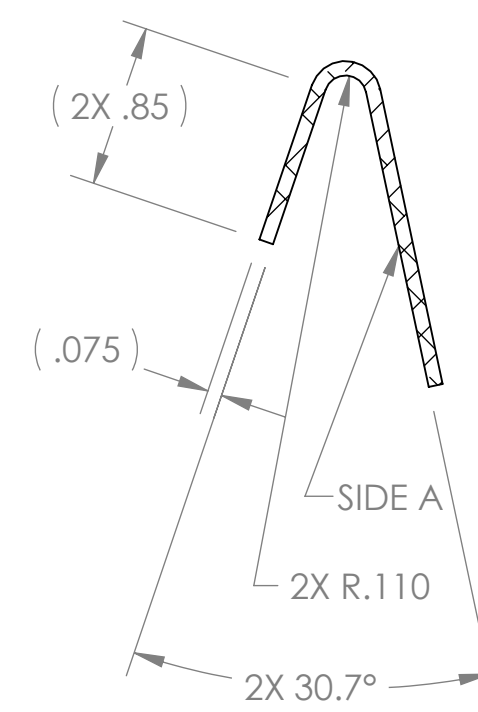


NOTES CONTINUED:
 (1) STOCK FINISH / AS RECEIVED.

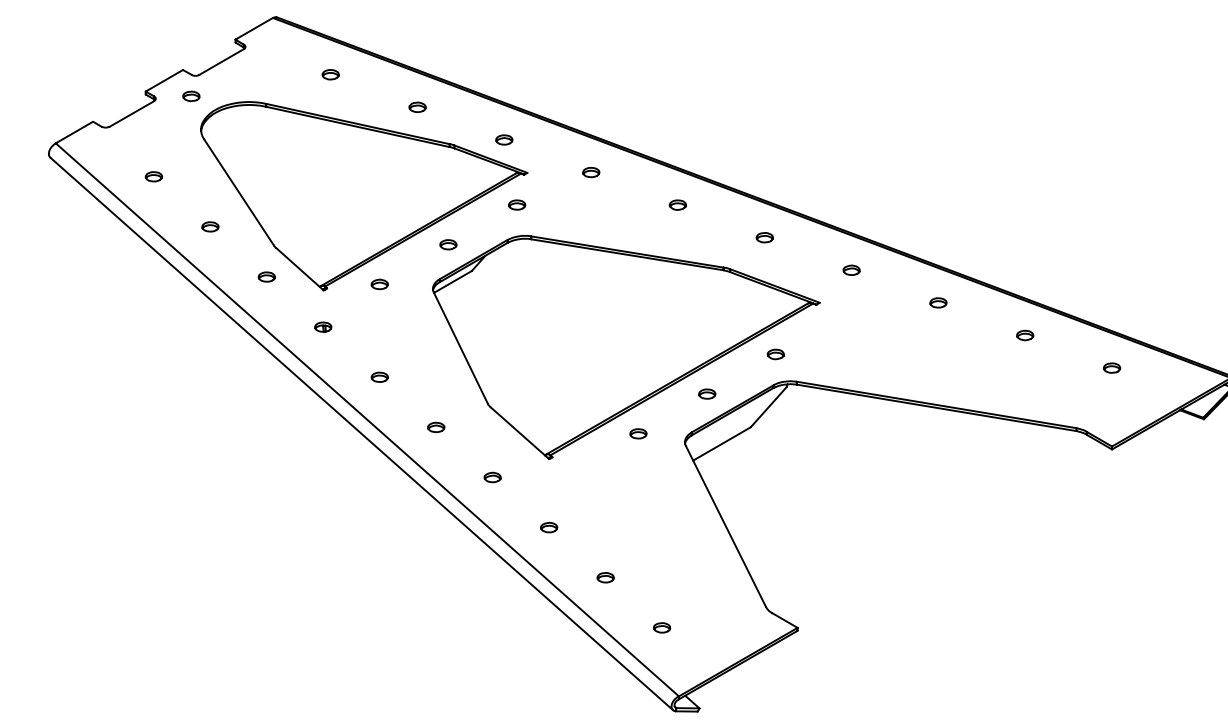
REV.	DATE	DCN #	DRAWING TREE #
v1	08 AUGUST 2010	E1000182-v1	-
-	-	-	-
-	-	-	-



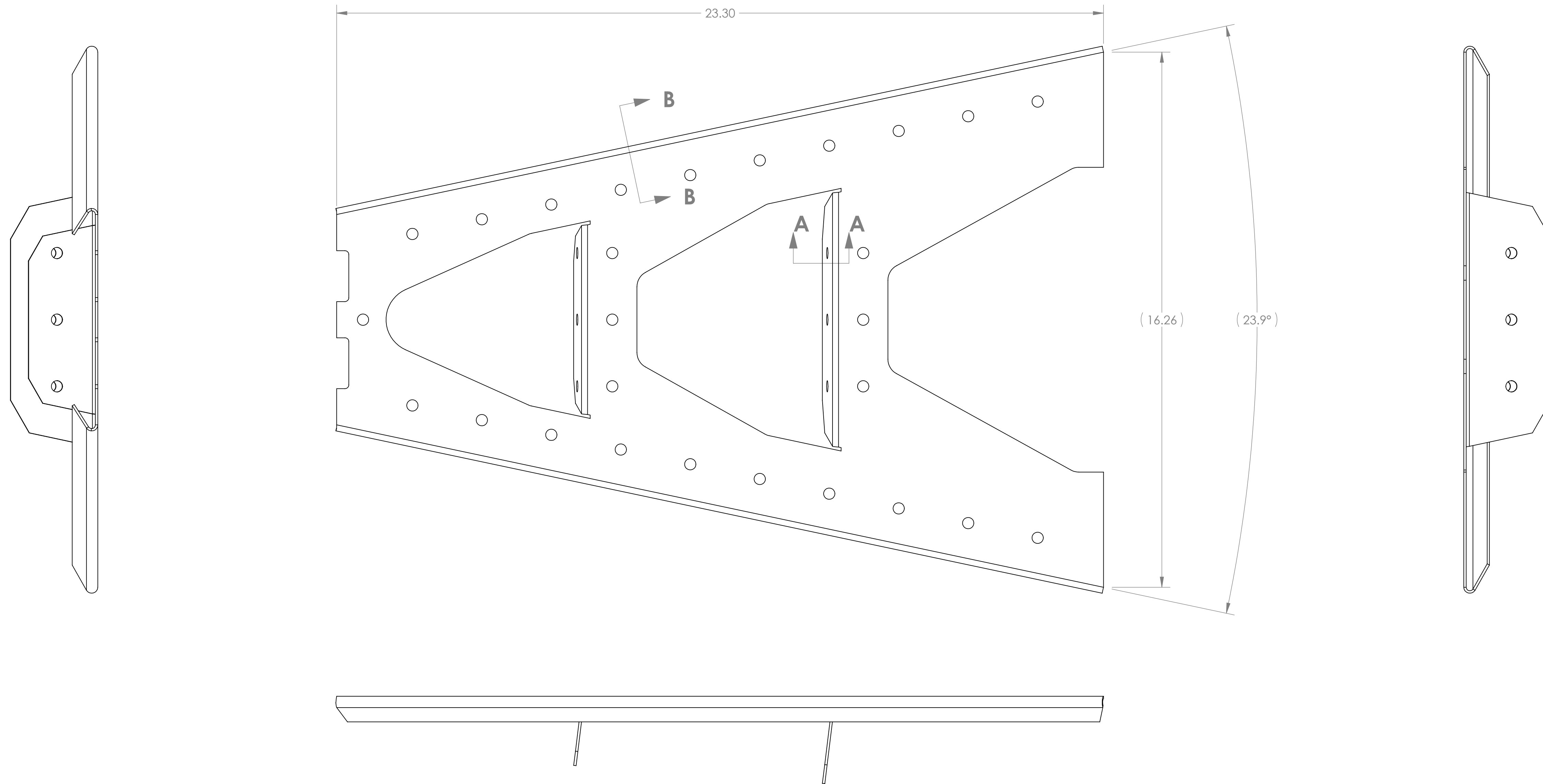
SECTION A-A
SCALE 1 : 1



SECTION B-B
SCALE 1 : 1



ISO VIEW

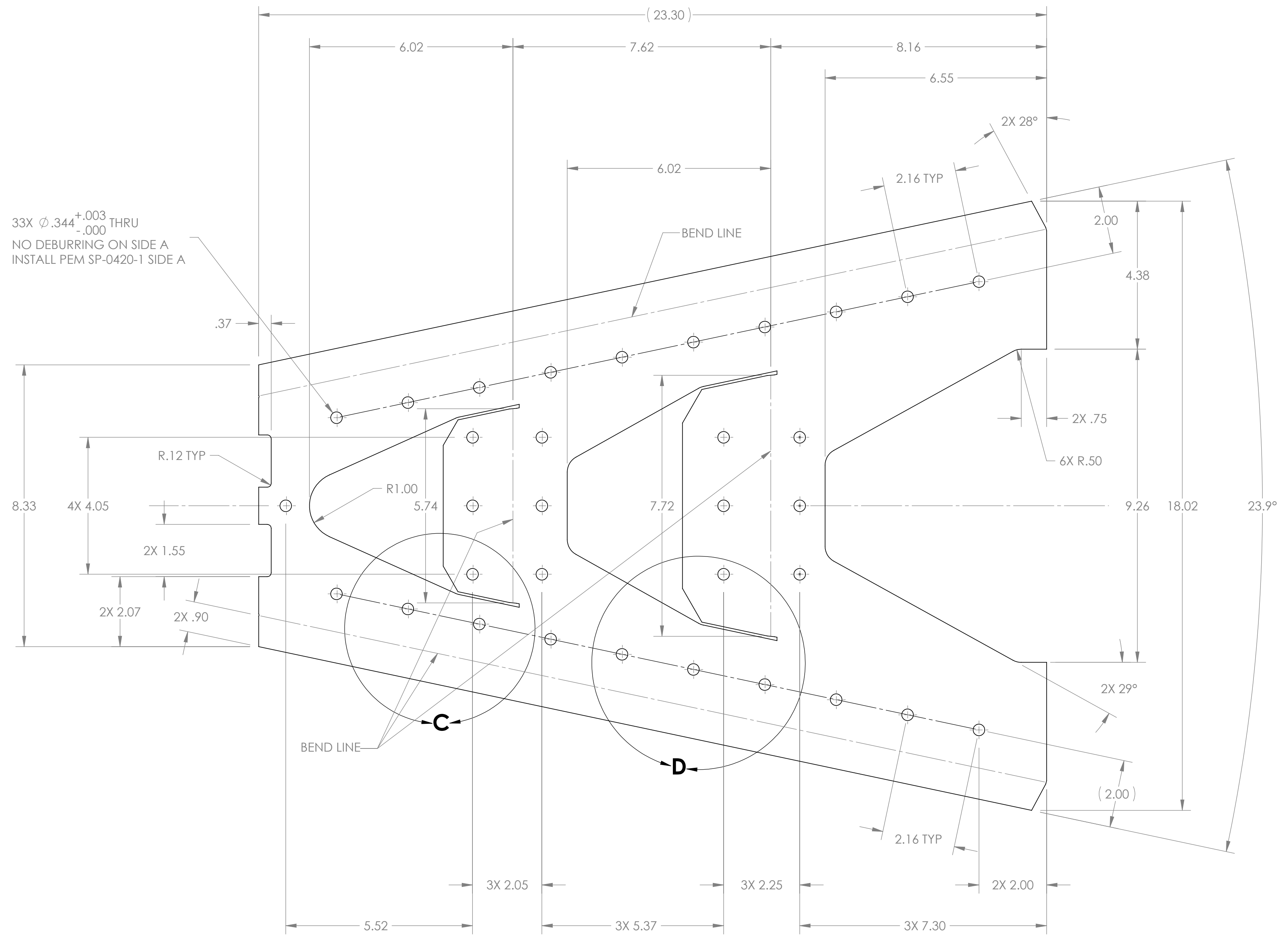
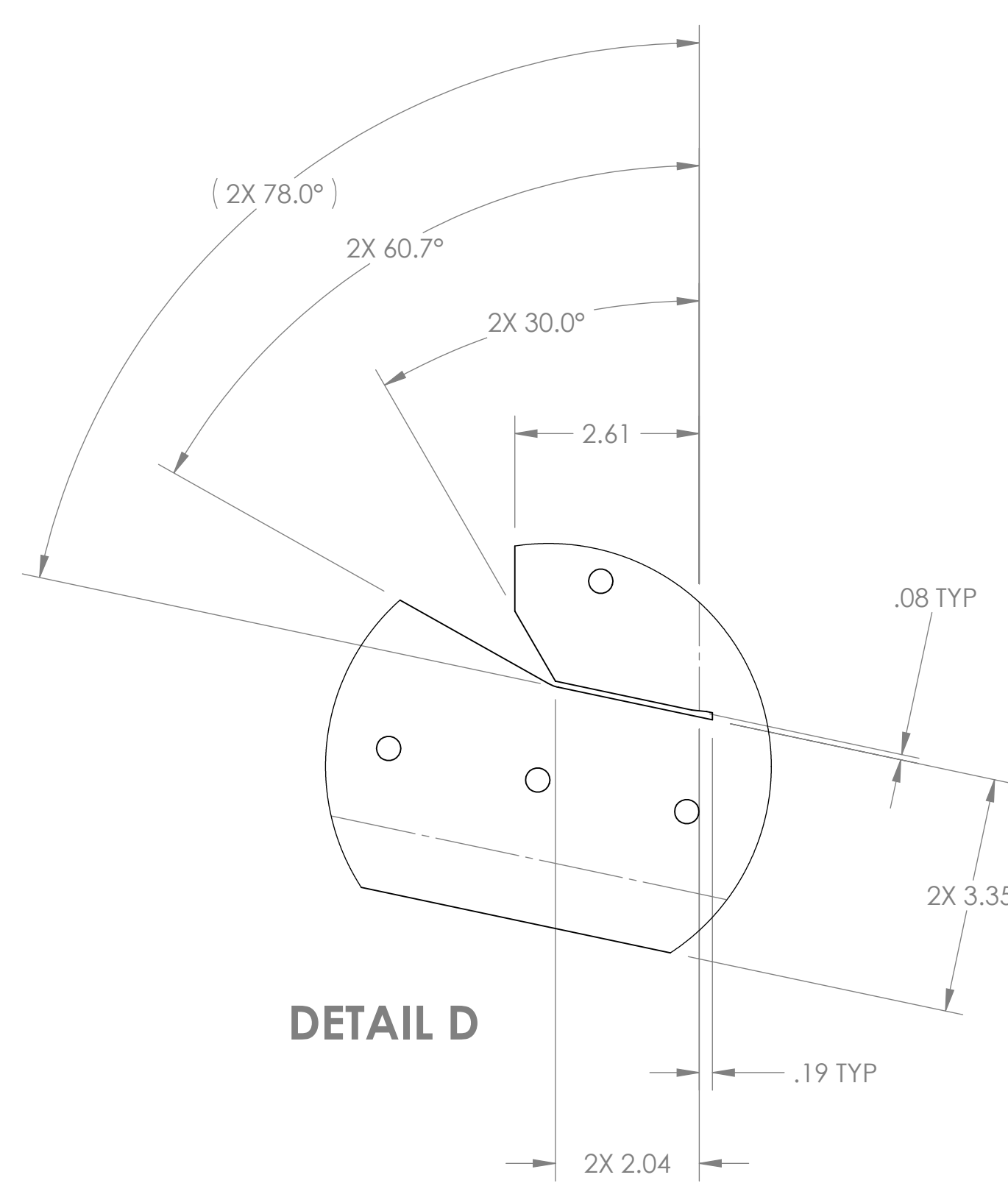
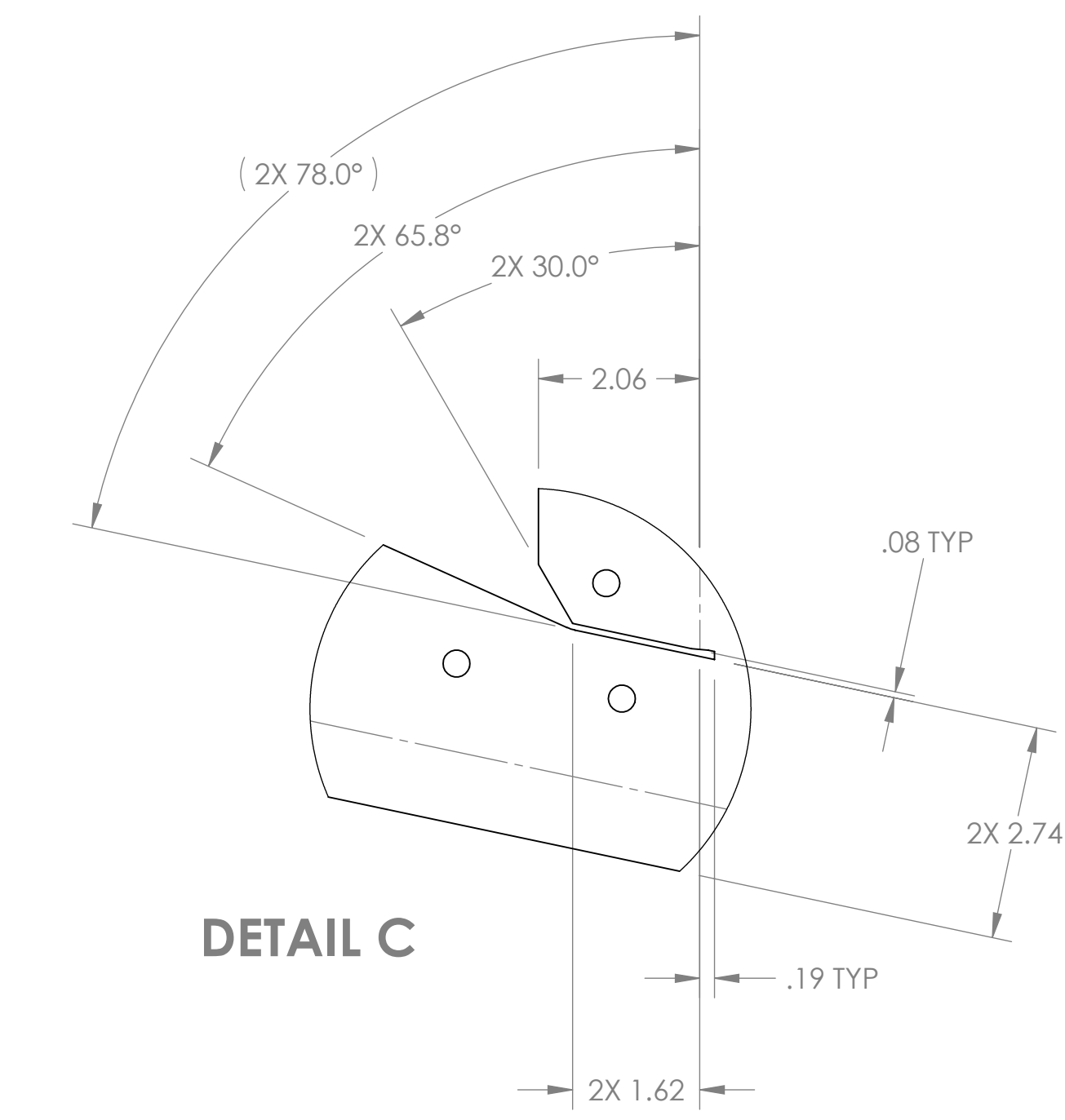


NOTES AND TOLERANCES: (UNLESS OTHERWISE SPECIFIED)	
1. INTERPRET DRAWING PER ASME Y14.5-1994. 2. REMOVE ALL SHARP EDGES, R.02 MIN. 3. DO NOT SCALE FROM DRAWING. 4. ALL MACHINING FLUIDS MUST BE FULLY SYNTHETIC, FULLY WATER SOLUBLE AND FREE OF SULFUR, SILICONE, AND CHLORINE.	
DIMENSIONS ARE IN INCHES TOLERANCES: .XX ± .01 .XXX ± .005 ANGULAR ± 1.0°	MATERIAL 304 SSSL SHEET, 14 GAUGE
FINISH (1)	NEXT ASSY D1001301

CALIFORNIA INSTITUTE OF TECHNOLOGY MASSACHUSETTS INSTITUTE OF TECHNOLOGY	
SYSTEM ADVANCED LIGO	SUB-SYSTEM AOS
PART NAME ALIGO AOS OPLEV TX PIER SIDE PANEL (PR3, SR3)	
DESIGNER C. CONLEY	DATE 6 AUG 2009
DRAFTER N. KILPATRICK	DATE 09 AUG 2010
CHECKER (blank)	APPROVAL (blank)
SIZE D	DWG. NO. D1001857
SCALE: 1:2	PROJECTION:

REV. v1	SHEET 1 OF 2
------------	--------------

D1001857.dwg: AOS Oplev TX Pier Side Panel (PR3, SR3) PART PDM REV: X-200, DRAWING PDM REV: X-004



LIGO CALIFORNIA INSTITUTE OF TECHNOLOGY MASSACHUSETTS INSTITUTE OF TECHNOLOGY	
SIZE DWG. NO.	REV.
D D1001857	v1
SCALE: 1:2	PROJECTION:
SHEET 2 OF 2	

D:\001857.dwg ACS C:\dev\TX File Side Panel (PES, S3) \PART PDM REV\X-200 DRAWING PDM REV.X-004