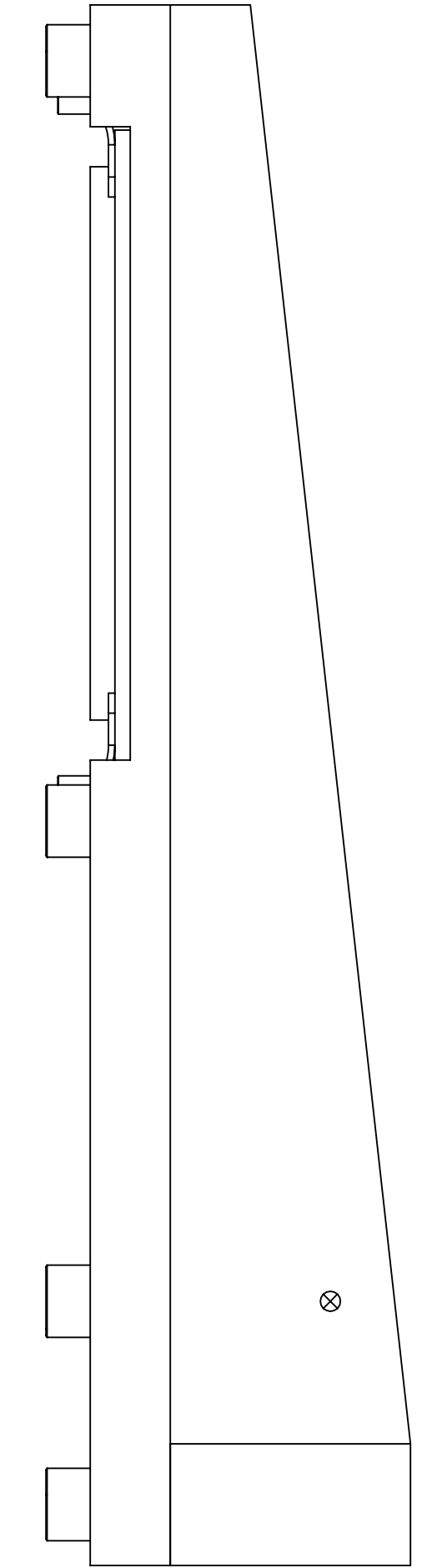
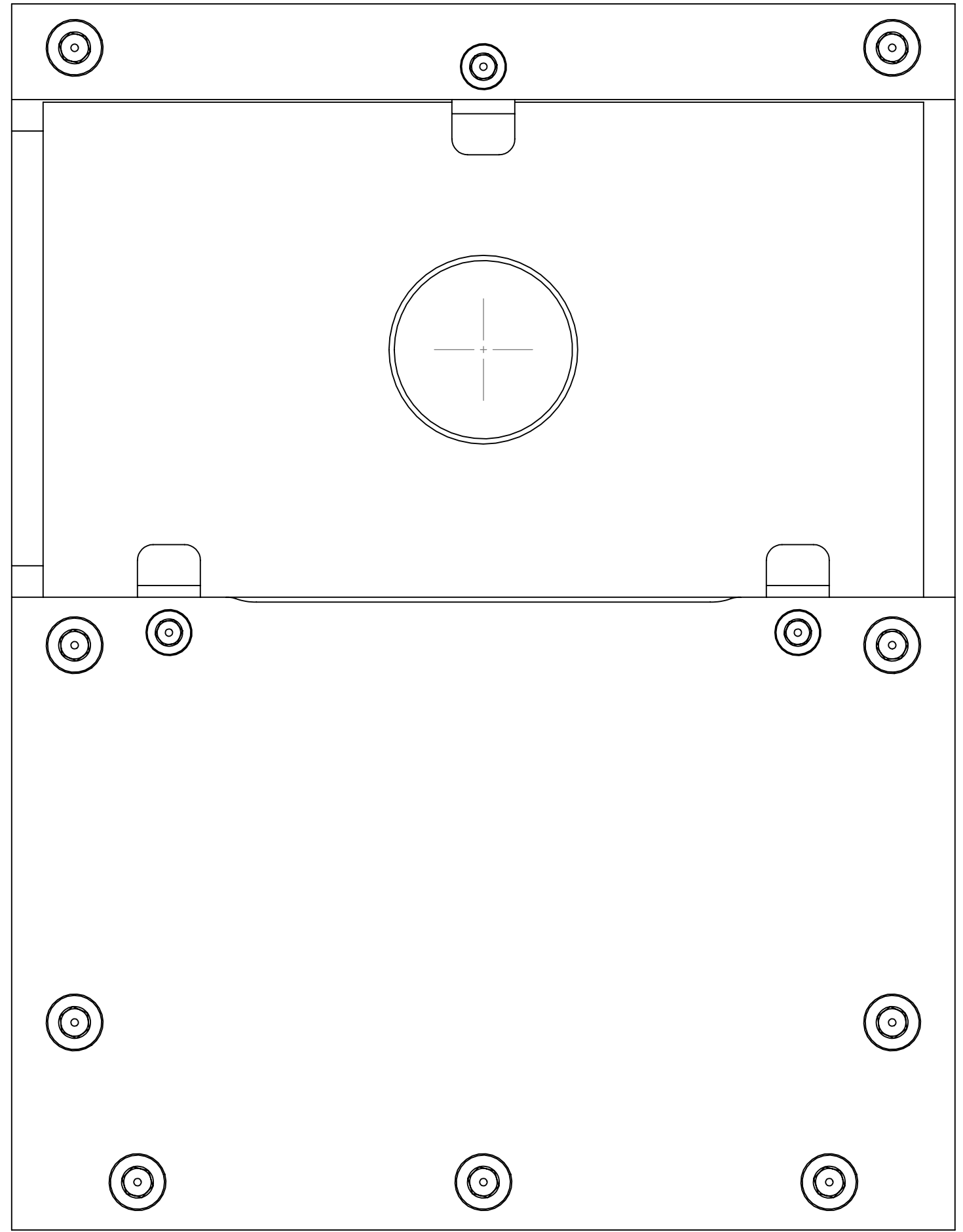
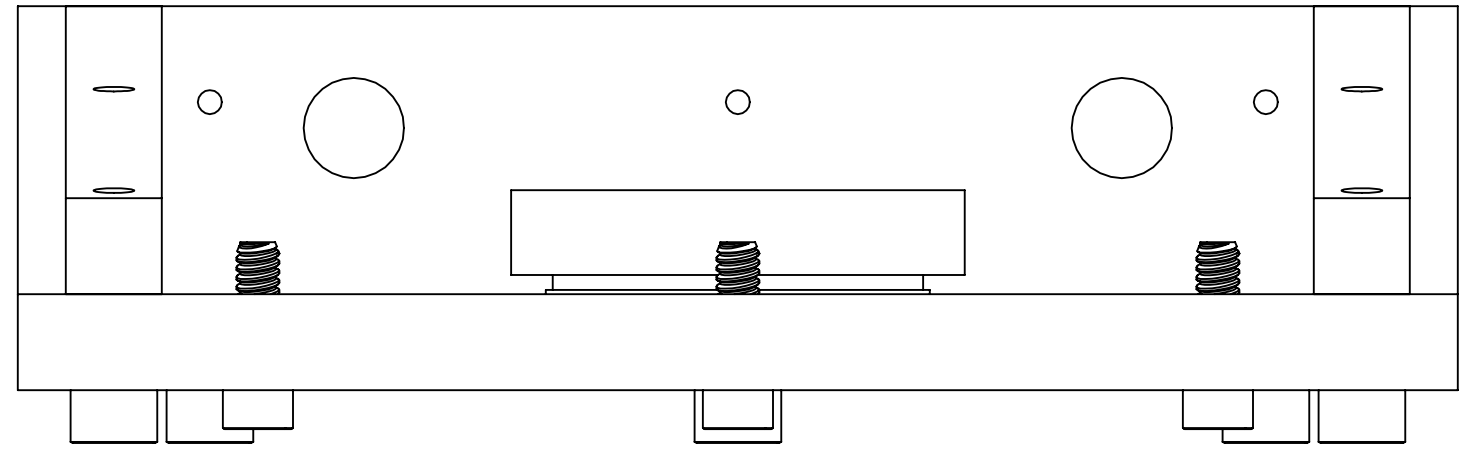
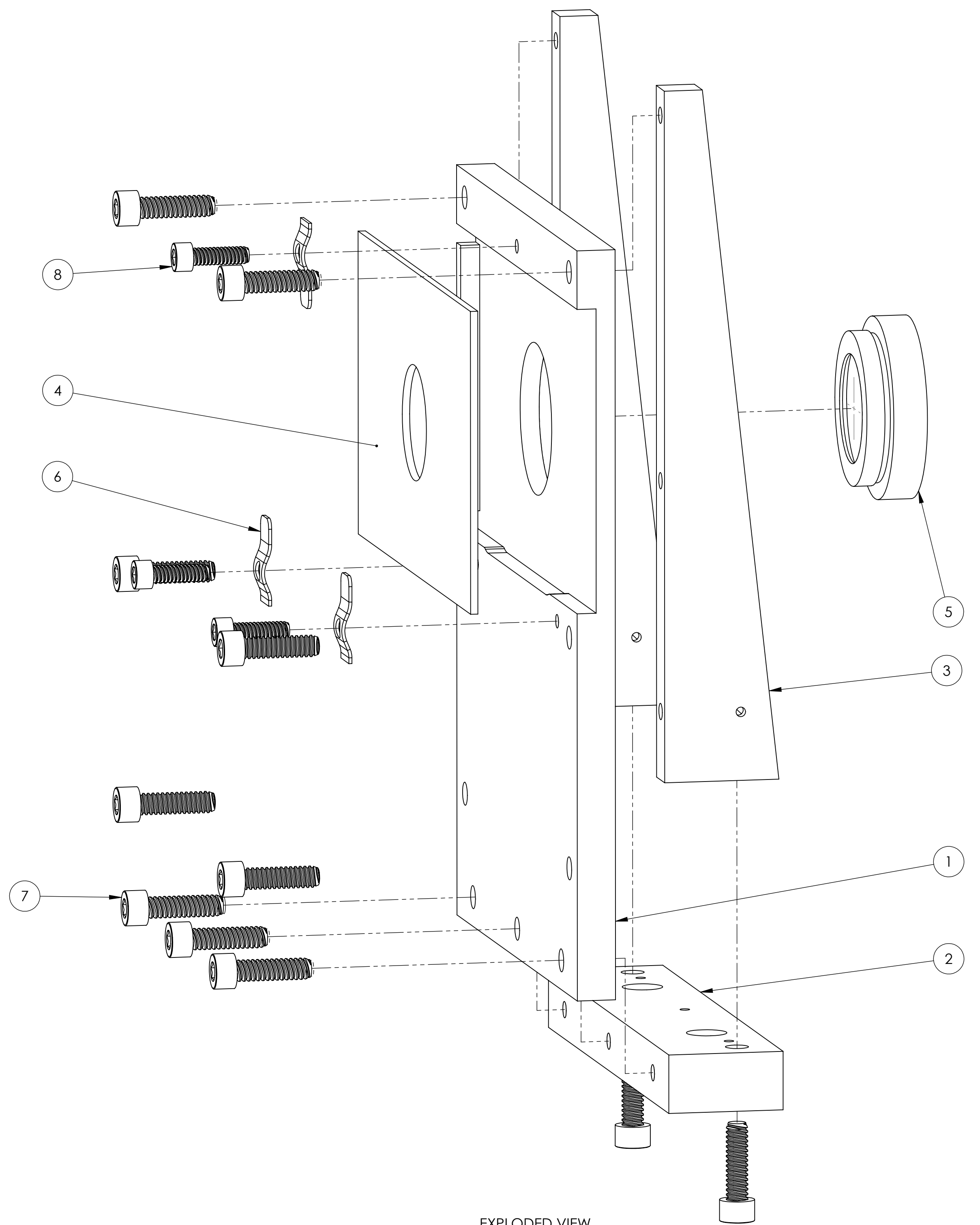


NOTES CONTINUED:  
 ⑤

| REV. | DATE        | DCN #    | DRAWING TREE # |
|------|-------------|----------|----------------|
| v1   | 7 OCT 2010  | E1000563 | -              |
| v2   | 17 DEC 2010 | E1000563 | -              |
| v3   | 02 MAR 2011 | E1000563 | -              |



EXPLODED VIEW  
SCALE 2:1

| ITEM NO. | PART NUMBER | DESCRIPTION   | MATERIAL                | Def<br>ault<br>/RE<br>Q | SPARE | TOTAL |
|----------|-------------|---|-------------------------|-------------------------|-------|-------|
| 8        | 92200A108   | Head Cap Screw 300 Series SS, 4-40 Thrd, 3/8" Length, MS 16995-10 | 18-8 SSSL               | 3                       |       | 0     |
| 7        | 92200A148   | SHCS, 6-32 x .50, 300 SSSL, MS16995-18                            | 300 SSSL                | 11                      |       | 0     |
| 6        | D1001919    | BEAM DUMP MOUNTING CLAMP  | 304 SSSL                | 3                       |       | 0     |
| 5        | D1001924    | C-MOUNT RETICLE   | UNKNOWN                 | 1                       |       | 0     |
| 4        | D1001920    | INPUT BAFFLE BEAM DUMP  | 18 GA A424 TYPE 1 STEEL | 1                       |       | 0     |
| 3        | D1001916    | INPUT BAFFLE SIDE SUPPORT   | 6061-T6 Al              | 2                       |       | 0     |
| 2        | D1001917    | INPUT BAFFLE BASE   | 6061-T6 Al              | 1                       |       | 0     |
| 1        | D1001915    | INPUT BAFFLE HOLDER   | 6061-T6 Al              | 1                       |       | 0     |

| NOTES AND TOLERANCES: (UNLESS OTHERWISE SPECIFIED) |           |
|--|-----------|
| DIMENSIONS ARE IN INCHES                           |           |
| TOLERANCES:<br>.XX ± .01<br>.XXX ± .005            |           |
| ANGULAR ± 0.5°                                     |           |
| MATERIAL   | FINISH    |
| N/A  | N/A μinch |

**LIGO** CALIFORNIA INSTITUTE OF TECHNOLOGY  
 MASSACHUSETTS INSTITUTE OF TECHNOLOGY

SYSTEM: ADVANCED LIGO SUB-SYSTEM: AOS

NEXT ASSY: D0900623

| PART NAME |            | INPUT BAFFLE ASSY |               |
|-----------|------------|-------------------|---------------|
| DESIGNER  | TQ. NGUYEN | 01 AUG 2010       | SIZE DWG. NO. |
| DRAFTER   | TQ. NGUYEN | 25 AUG 2010       | D D1001918    |
| CHECKER   | M. SMITH   |                   | REV. v3       |
| APPROVAL  | D. COYNE   | SCALE: 2:1        | PROJECTION:   |
|           |            | SHEET 1 OF 1      |               |

D:\001918\_d\UGO\_AOS\_Wedge Window Input Baffle Assy\_PART PDM REV: X0111.DRAWING PDM REV: X010