

8

7

6

5

4

3

2

1

REVISIONS			
REV	DESCRIPTION	DATE	APPROVED
A	SEE ECN# D972710-A FOR CHANGE LIST	11/03/97	T. THOMPSON
B	SEE ECN# D972710-B FOR CHANGE LIST	03/11/98	T. THOMPSON
C	SEE ECN# D972710-C FOR CHANGE LIST	03/20/98	T. THOMPSON
D	SEE ECN# D972710-D FOR CHANGE LIST	04/14/98	T. THOMPSON
E	SEE ECN# D972710-E FOR CHANGE LIST	05/21/98	T. THOMPSON
F	SEE ECN# D972710-F FOR CHANGE LIST	08/17/98	T. THOMPSON
G	SEE ECN# D972710-G FOR CHANGE LIST	04/23/99	T. THOMPSON

1/4-20 UNC-2B THRU  
 +.005 OVERSIZE TAP WITH  
 #1 (Ø .228) DRILL SIZE  
 2.00 X 2.00 HOLE PATTERN  
 FILLS THE ENTIRE UPPER  
 SURFACE OF OPTICAL TABLE

TO REMAIN .50 FROM EDGE  
 OF OTHER THRU HOLES IN  
 SURFACE

⊕ Ø .017 (M) (P) .50 A B C

4X Ø 9.000 B.C.

12X  
 Ø 2.500, THRU ITEM 5  
 ✓ Ø 2.000 X 90°, 12.750 FROM DATUM A  
 Ø 1.000 THRU ITEM 1  
 ⊕ Ø .012 (M) A B C

DETAIL K  
 SCALE 1 : 4

SEE WELD  
 CONFIGURATION #2  
 ON D972202

24X  
 R .5

4X 2.00  
 THRU ALL  
 ⊕ .050 (S) A B C

3X .50  
 2 PLACES

2X 1.50  
 2 PLACES

8X .50  
 2 PLACES

4X 2.500

2X 4.00 THRU ALL  
 ⊕ .050 (S) A B C

4X 2.500

2X 1.50 2 PLACES

6X 7.50 2 PLACES  
 THRU ALL  
 ⊕ .050 (S) A B C

14X 2.500

2X 4.00 THRU ALL  
 ⊕ .050 (S) A B C

4X 2.500

2X 1.50 2 PLACES

8X .50 2 PLACES

4X 2.500

2X 4.00 THRU ALL  
 ⊕ .050 (S) A B C

4X 2.500

2X 1.50 2 PLACES

6X 7.50 2 PLACES  
 THRU ALL  
 ⊕ .050 (S) A B C

14X 2.500

2X 4.00 THRU ALL  
 ⊕ .050 (S) A B C

4X 2.500

2X 1.50 2 PLACES

8X .50 2 PLACES

4X 2.500

2X 4.00 THRU ALL  
 ⊕ .050 (S) A B C

4X 2.500

2X 1.50 2 PLACES

6X 7.50 2 PLACES  
 THRU ALL  
 ⊕ .050 (S) A B C

14X 2.500

2X 4.00 THRU ALL  
 ⊕ .050 (S) A B C

4X 2.500

2X 1.50 2 PLACES

8X .50 2 PLACES

4X 2.500

2X 4.00 THRU ALL  
 ⊕ .050 (S) A B C

4X 2.500

2X 1.50 2 PLACES

6X 7.50 2 PLACES  
 THRU ALL  
 ⊕ .050 (S) A B C

14X 2.500

2X 4.00 THRU ALL  
 ⊕ .050 (S) A B C

4X 2.500

2X 1.50 2 PLACES

8X .50 2 PLACES

4X 2.500

2X 4.00 THRU ALL  
 ⊕ .050 (S) A B C

4X 2.500

2X 1.50 2 PLACES

6X 7.50 2 PLACES  
 THRU ALL  
 ⊕ .050 (S) A B C

14X 2.500

2X 4.00 THRU ALL  
 ⊕ .050 (S) A B C

4X 2.500

2X 1.50 2 PLACES

8X .50 2 PLACES

4X 2.500

2X 4.00 THRU ALL  
 ⊕ .050 (S) A B C

4X 2.500

2X 1.50 2 PLACES

6X 7.50 2 PLACES  
 THRU ALL  
 ⊕ .050 (S) A B C

14X 2.500

2X 4.00 THRU ALL  
 ⊕ .050 (S) A B C

4X 2.500

2X 1.50 2 PLACES

8X .50 2 PLACES

4X 2.500

2X 4.00 THRU ALL  
 ⊕ .050 (S) A B C

4X 2.500

2X 1.50 2 PLACES

6X 7.50 2 PLACES  
 THRU ALL  
 ⊕ .050 (S) A B C

14X 2.500

2X 4.00 THRU ALL  
 ⊕ .050 (S) A B C

4X 2.500

2X 1.50 2 PLACES

8X .50 2 PLACES

4X 2.500

2X 4.00 THRU ALL  
 ⊕ .050 (S) A B C

4X 2.500

2X 1.50 2 PLACES

6X 7.50 2 PLACES  
 THRU ALL  
 ⊕ .050 (S) A B C

14X 2.500

2X 4.00 THRU ALL  
 ⊕ .050 (S) A B C

4X 2.500

2X 1.50 2 PLACES

8X .50 2 PLACES

4X 2.500

2X 4.00 THRU ALL  
 ⊕ .050 (S) A B C

4X 2.500

2X 1.50 2 PLACES

6X 7.50 2 PLACES  
 THRU ALL  
 ⊕ .050 (S) A B C

14X 2.500

2X 4.00 THRU ALL  
 ⊕ .050 (S) A B C

4X 2.500

2X 1.50 2 PLACES

8X .50 2 PLACES

4X 2.500

2X 4.00 THRU ALL  
 ⊕ .050 (S) A B C

4X 2.500

2X 1.50 2 PLACES

6X 7.50 2 PLACES  
 THRU ALL  
 ⊕ .050 (S) A B C

14X 2.500

2X 4.00 THRU ALL  
 ⊕ .050 (S) A B C

4X 2.500

2X 1.50 2 PLACES

8X .50 2 PLACES

4X 2.500

2X 4.00 THRU ALL  
 ⊕ .050 (S) A B C

4X 2.500

2X 1.50 2 PLACES

6X 7.50 2 PLACES  
 THRU ALL  
 ⊕ .050 (S) A B C

14X 2.500

2X 4.00 THRU ALL  
 ⊕ .050 (S) A B C

4X 2.500

2X 1.50 2 PLACES

8X .50 2 PLACES

4X 2.500

2X 4.00 THRU ALL  
 ⊕ .050 (S) A B C

4X 2.500

2X 1.50 2 PLACES

6X 7.50 2 PLACES  
 THRU ALL  
 ⊕ .050 (S) A B C

14X 2.500

2X 4.00 THRU ALL  
 ⊕ .050 (S) A B C

4X 2.500

2X 1.50 2 PLACES

8X .50 2 PLACES

4X 2.500

2X 4.00 THRU ALL  
 ⊕ .050 (S) A B C

4X 2.500

2X 1.50 2 PLACES

6X 7.50 2 PLACES  
 THRU ALL  
 ⊕ .050 (S) A B C

14X 2.500

2X 4.00 THRU ALL  
 ⊕ .050 (S) A B C

4X 2.500

2X 1.50 2 PLACES

8X .50 2 PLACES

4X 2.500

2X 4.00 THRU ALL  
 ⊕ .050 (S) A B C

4X 2.500

2X 1.50 2 PLACES

6X 7.50 2 PLACES  
 THRU ALL  
 ⊕ .050 (S) A B C

14X 2.500

2X 4.00 THRU ALL  
 ⊕ .050 (S) A B C

4X 2.500

2X 1.50 2 PLACES

8X .50 2 PLACES

4X 2.500

2X 4.00 THRU ALL  
 ⊕ .050 (S) A B C

4X 2.500

2X 1.50 2 PLACES

6X 7.50 2 PLACES  
 THRU ALL  
 ⊕ .050 (S) A B C

14X 2.500

2X 4.00 THRU ALL  
 ⊕ .050 (S) A B C

4X 2.500

2X 1.50 2 PLACES

8X .50 2 PLACES

4X 2.500

2X 4.00 THRU ALL  
 ⊕ .050 (S) A B C

4X 2.500

2X 1.50 2 PLACES

6X 7.50 2 PLACES  
 THRU ALL  
 ⊕ .050 (S) A B C

14X 2.500

2X 4.00 THRU ALL  
 ⊕ .050 (S) A B C

4X 2.500

2X 1.50 2 PLACES

8X .50 2 PLACES

4X 2.500

2X 4.00 THRU ALL  
 ⊕ .050 (S) A B C

4X 2.500

2X 1.50 2 PLACES

6X 7.50 2 PLACES  
 THRU ALL  
 ⊕ .050 (S) A B C

14X 2.500

2X 4.00 THRU ALL  
 ⊕ .050 (S) A B C

4X 2.500

2X 1.50 2 PLACES

8X .50 2 PLACES

4X 2.500

2X 4.00 THRU ALL  
 ⊕ .050 (S) A B C

4X 2.500

2X 1.50 2 PLACES

6X 7.50 2 PLACES  
 THRU ALL  
 ⊕ .050 (S) A B C

14X 2.500

2X 4.00 THRU ALL  
 ⊕ .050 (S) A B C

4X 2.500

2X 1.50 2 PLACES

8X .50 2 PLACES

4X 2.500

2X 4.00 THRU ALL  
 ⊕ .050 (S) A B C

4X 2.500

2X 1.50 2 PLACES

6X 7.50 2 PLACES  
 THRU ALL  
 ⊕ .050 (S) A B C

14X 2.500

2X 4.00 THRU ALL  
 ⊕ .050 (S) A B C

4X 2.500

2X 1.50 2 PLACES

8X .50 2 PLACES

4X 2.500

2X 4.00 THRU ALL  
 ⊕ .050 (S) A B C

4X 2.500

2X 1.50 2 PLACES

6X 7.50 2 PLACES  
 THRU ALL  
 ⊕ .050 (S) A B C

14X 2.500

2X 4.00 THRU ALL  
 ⊕ .050 (S) A B C

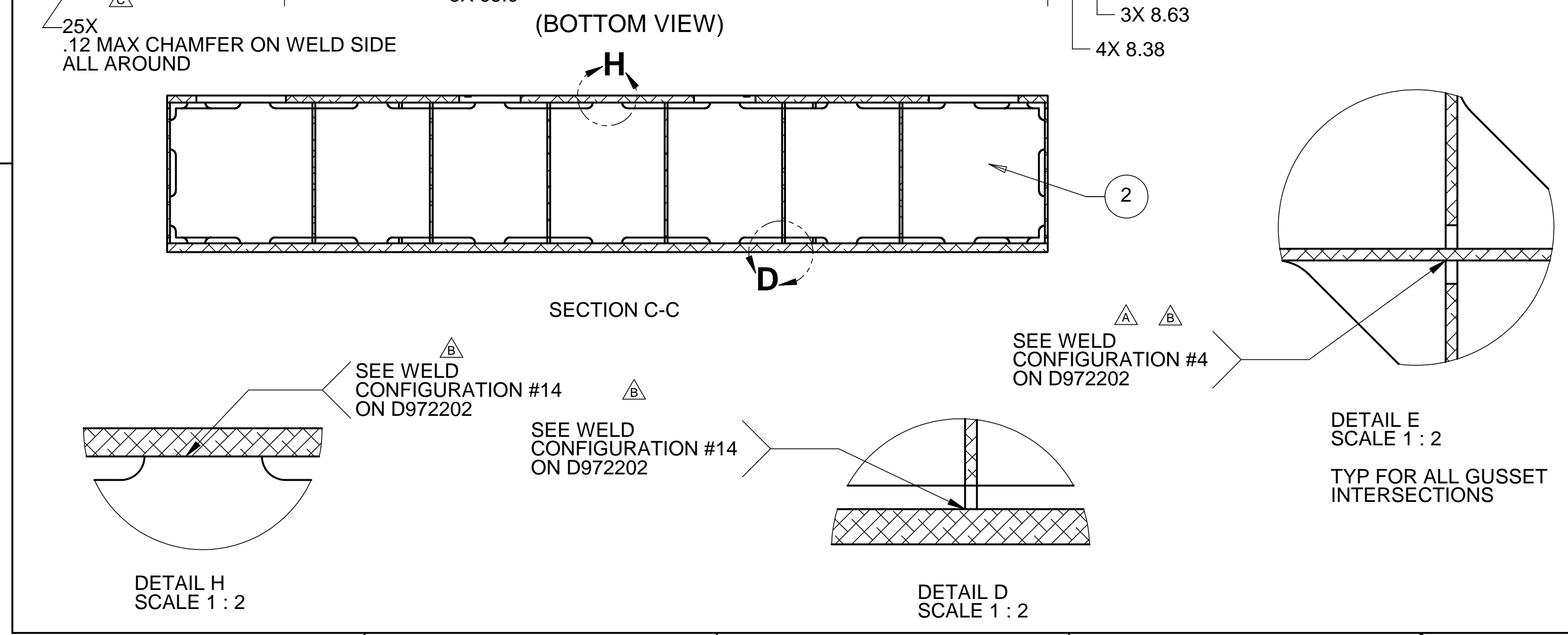
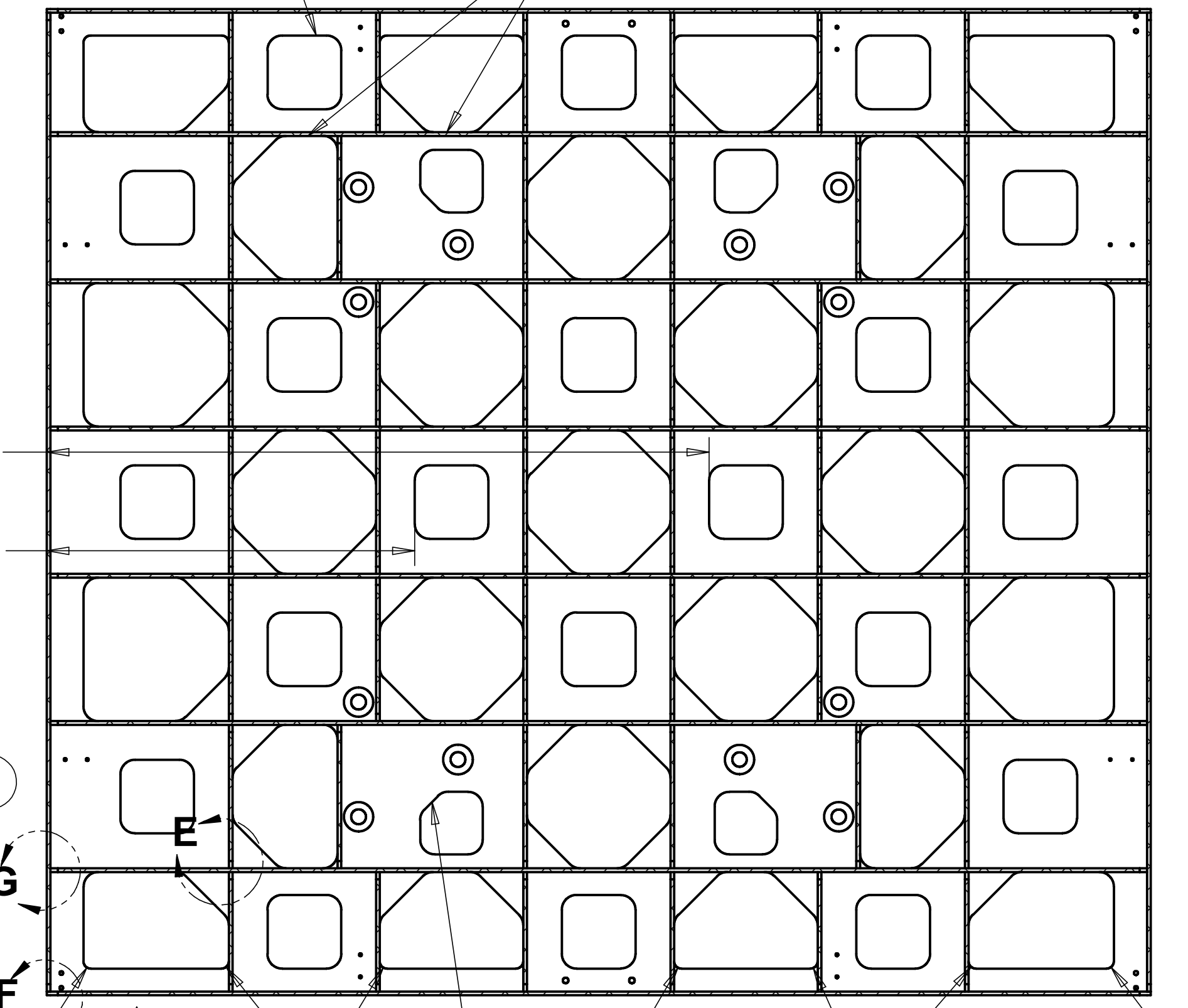
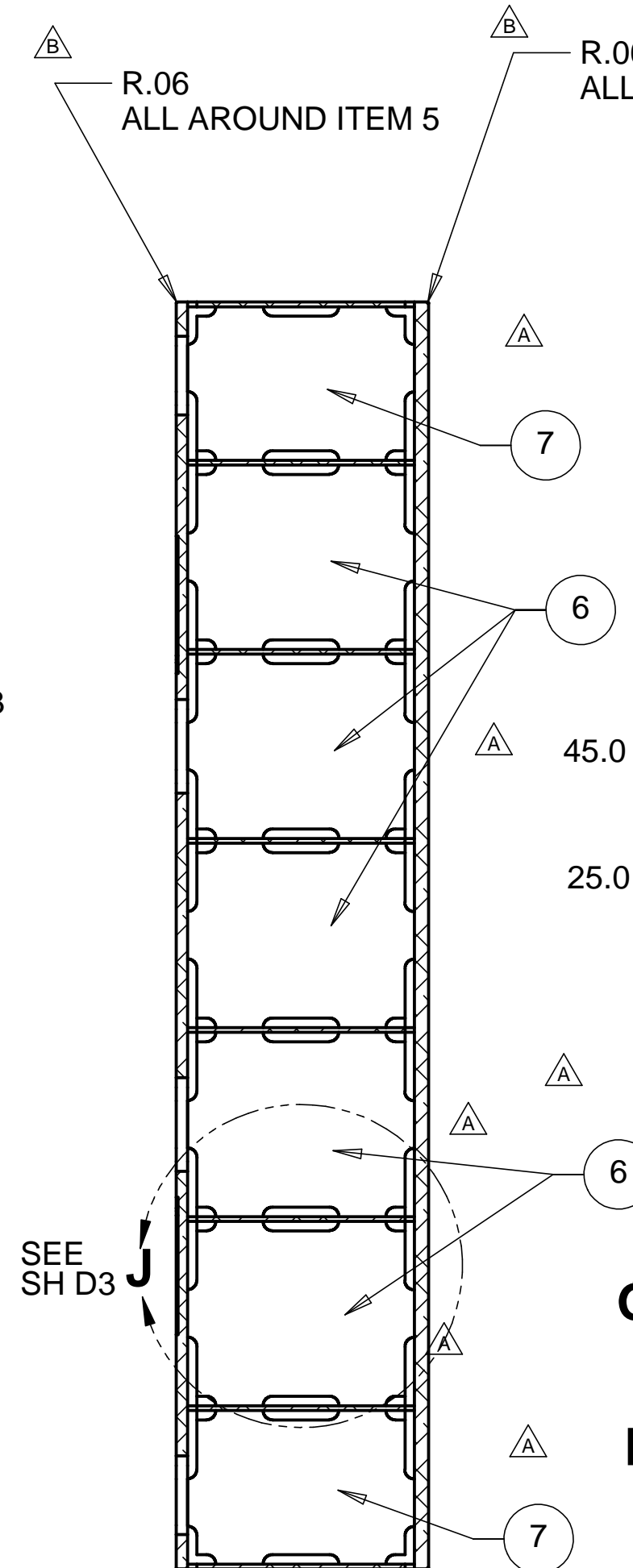
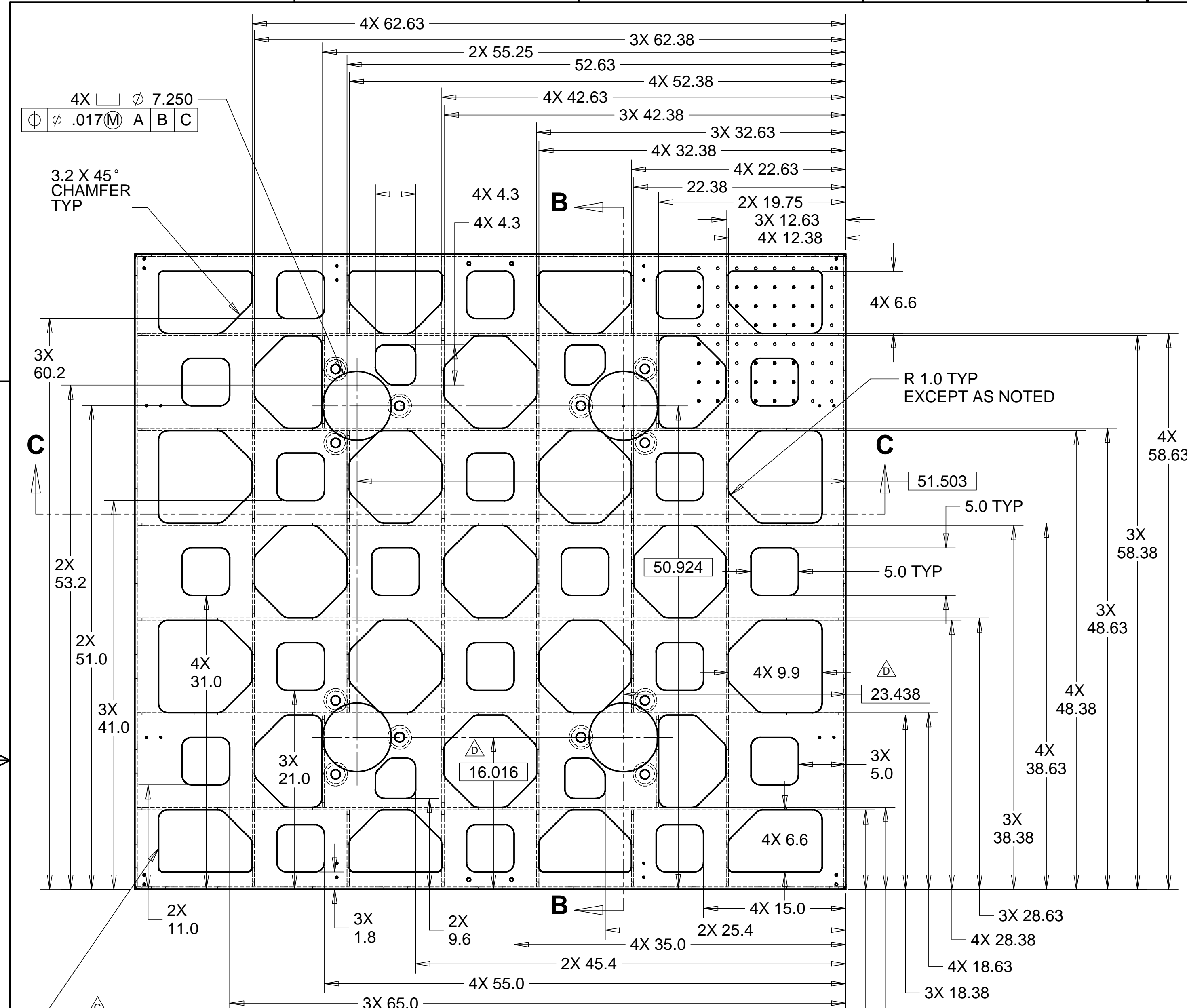
4X 2.500

2X 1.50 2 PLACES

8X .50 2 PLACES

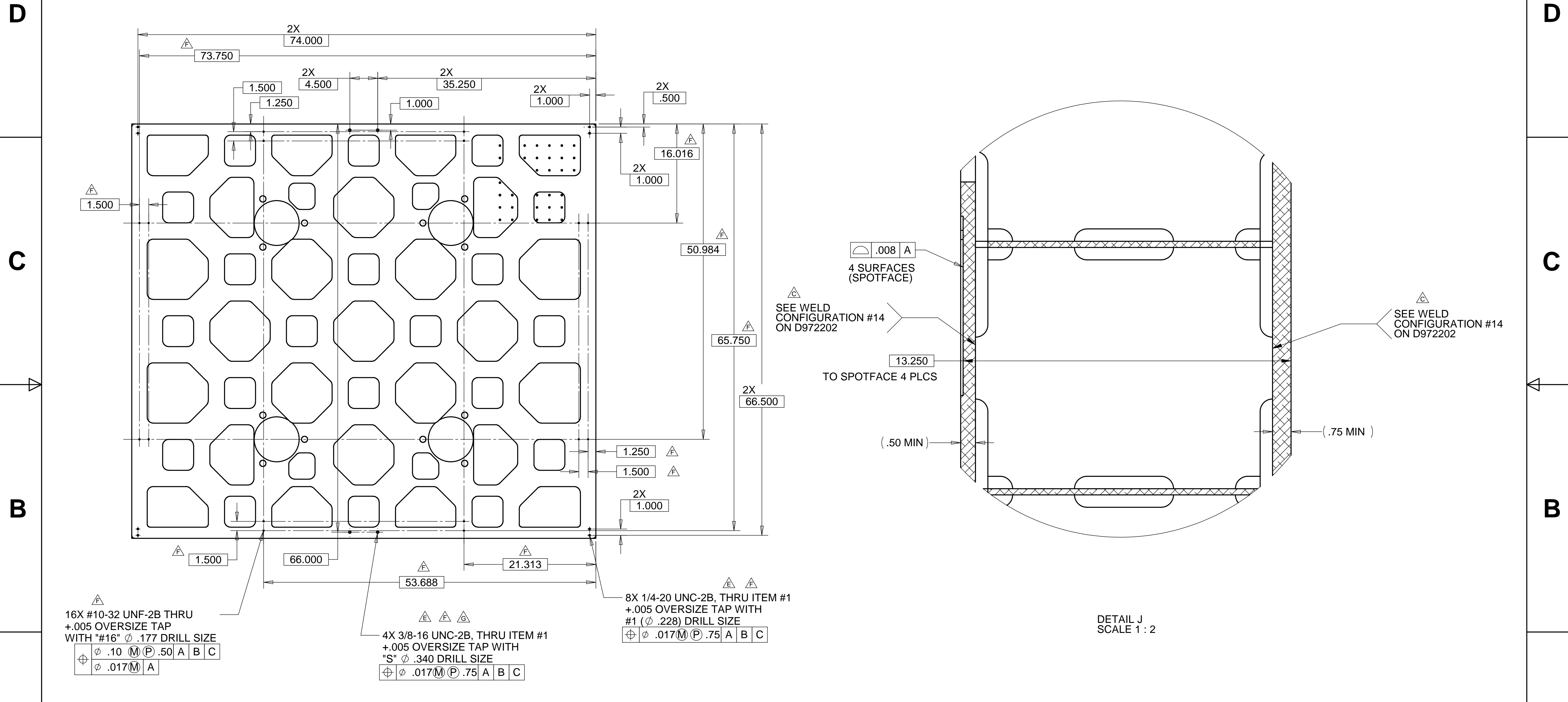
4X 2.500

REV	DESCRIPTION	DATE	APPROVED
A	SEE ECN# D972710-A FOR CHANGE LIST	11/03/97	T. THOMPSON
B	SEE ECN# D972710-B FOR CHANGE LIST	03/11/98	T. THOMPSON
C	SEE ECN# D972710-C FOR CHANGE LIST	03/20/98	T. THOMPSON
D	SEE ECN# D972710-D FOR CHANGE LIST	04/14/98	T. THOMPSON
E	SEE ECN# D972710-E FOR CHANGE LIST	05/21/98	T. THOMPSON
F	SEE ECN# D972710-F FOR CHANGE LIST	08/17/98	T. THOMPSON
G	SEE ECN# D972710-G FOR CHANGE LIST	04/23/99	T. THOMPSON



PARTS LIST			
UNLESS OTHERWISE SPECIFIED: DIMENSIONS ARE IN INCHES -TOLERANCES-		CAD GENERATED DRAWING, DO NOT MANUALLY UPDATE DO NOT SCALE DRAWING	
DECIMALS X = +/- .1 XX = +/- .03 XXX = +/- .010	ANGULAR = +/- .30° SURFACE FINISH = 250	TITLE <b>HYTEC, INC</b> LIGO HAM OPTICAL TABLE	
FINISH ALL MACHINED SURFACES 64 RMS	SIGNATURE ROGER L. SMITH	DATE 5-28-97	DWG. NO. D972710
PART NO. D972710-1	DRAWN ROGER L. SMITH	DATE 5-28-97	SIZE D
	CHECKED HARRY SALAZAR	DATE 6-6-97	SHEET NO. 2 of 3
	ENGR. T. THOMPSON	DATE 6-16-97	SCALE 1/8
	APPROVED T. THOMPSON	DATE 6-16-97	REVISION G

REVISIONS			
REV	DESCRIPTION	DATE	APPROVED
A	SEE ECN# D972710-A FOR CHANGE LIST	11/03/97	T. THOMPSON
B	SEE ECN# D972710-B FOR CHANGE LIST	03/11/98	T. THOMPSON
C	SEE ECN# D972710-C FOR CHANGE LIST	03/20/98	T. THOMPSON
D	SEE ECN# D972710-D FOR CHANGE LIST	04/14/98	T. THOMPSON
E	SEE ECN# D972710-E FOR CHANGE LIST	05/21/98	T. THOMPSON
F	SEE ECN# D972710-F FOR CHANGE LIST	08/17/98	T. THOMPSON
G	SEE ECN# D972710-G FOR CHANGE LIST	04/23/99	T. THOMPSON



16X #10-32 UNF-2B THRU  
+.005 OVERSIZE TAP  
WITH "#16"  $\phi$  .177 DRILL SIZE

$\phi$ .10	M	P	.50	A	B	C
$\phi$ .017	M			A		

4X 3/8-16 UNC-2B, THRU ITEM #1  
+.005 OVERSIZE TAP WITH  
"S"  $\phi$  .340 DRILL SIZE

$\phi$ .017	M	P	.75	A	B	C
-------------	---	---	-----	---	---	---

8X 1/4-20 UNC-2B, THRU ITEM #1  
+.005 OVERSIZE TAP WITH  
#1 ( $\phi$  .228) DRILL SIZE

$\phi$ .017	M	P	.75	A	B	C
-------------	---	---	-----	---	---	---

PARTS LIST								
UNLESS OTHERWISE SPECIFIED: DIMENSIONS ARE IN INCHES -TOLERANCES-  DECIMALS      ANGULAR = +/- .30° .X    = +/- .1 .XX   = +/- .03 .XXX = +/- .010      SURFACE FINISH = 250	CAD GENERATED DRAWING, DO NOT MANUALLY UPDATE DO NOT SCALE DRAWING		<b>HYTEC, INC</b>  TITLE <b>LIGO HAM OPTICAL TABLE</b>					
					DESIGNED	ROGER L. SMITH	DATE	10-22-97
			DRAWN	ROGER L. SMITH	15-20-97	DWG. NO.	SIZE	SHEET NO.
			CHECKED	HARRY SALAZAR	3-2-98	D972710	D	3 of 3
ENGR.	T. THOMPSON	3-7-98						
APPROVED	T. THOMPSON	3-7-98	SCALE 1/2	REVISION G				
PART NO.	D972710-1							