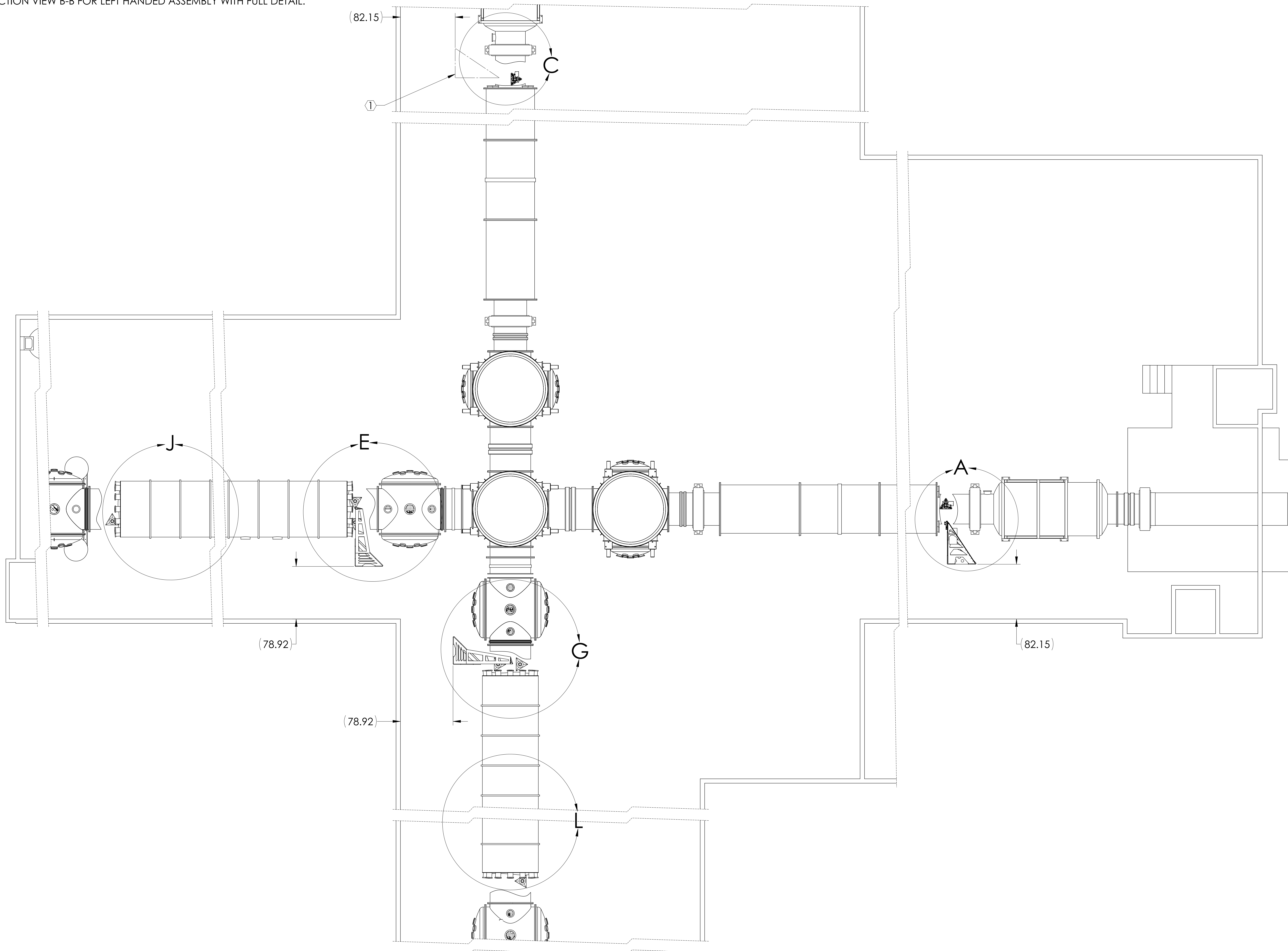


NOTES CONTINUED:

① RIGHT HANDED OPLEV RECEIVER ASSEMBLY AT NOTED LOCATION. MIRROR IMAGE OF LEFT HANDED ASSEMBLY. SEE DETAIL VIEW A AND SECTION VIEW B-B FOR LEFT HANDED ASSEMBLY WITH FULL DETAIL.

REV.	DATE	DCN #	DRAWING TREE #
-	-	-	-
-	-	-	-
-	-	-	-



DIMENSIONS ARE IN INCHES

TOLERANCES:
 .XX ±
 .XXX ±
 ANGULAR ± °

NOTES AND TOLERANCES: (UNLESS OTHERWISE SPECIFIED)
 1. INTERPRET DRAWING PER ASME Y14.5-1994.
 2. REMOVE ALL SHARP EDGES, R.02 MIN.
 3. DO NOT SCALE FROM DRAWING.
 4. ALL MACHINING FLUIDS MUST BE FULLY SYNTHETIC, FULLY WATER SOLUBLE, AND FREE OF SULFUR, SILICONE, AND CHLORINE.

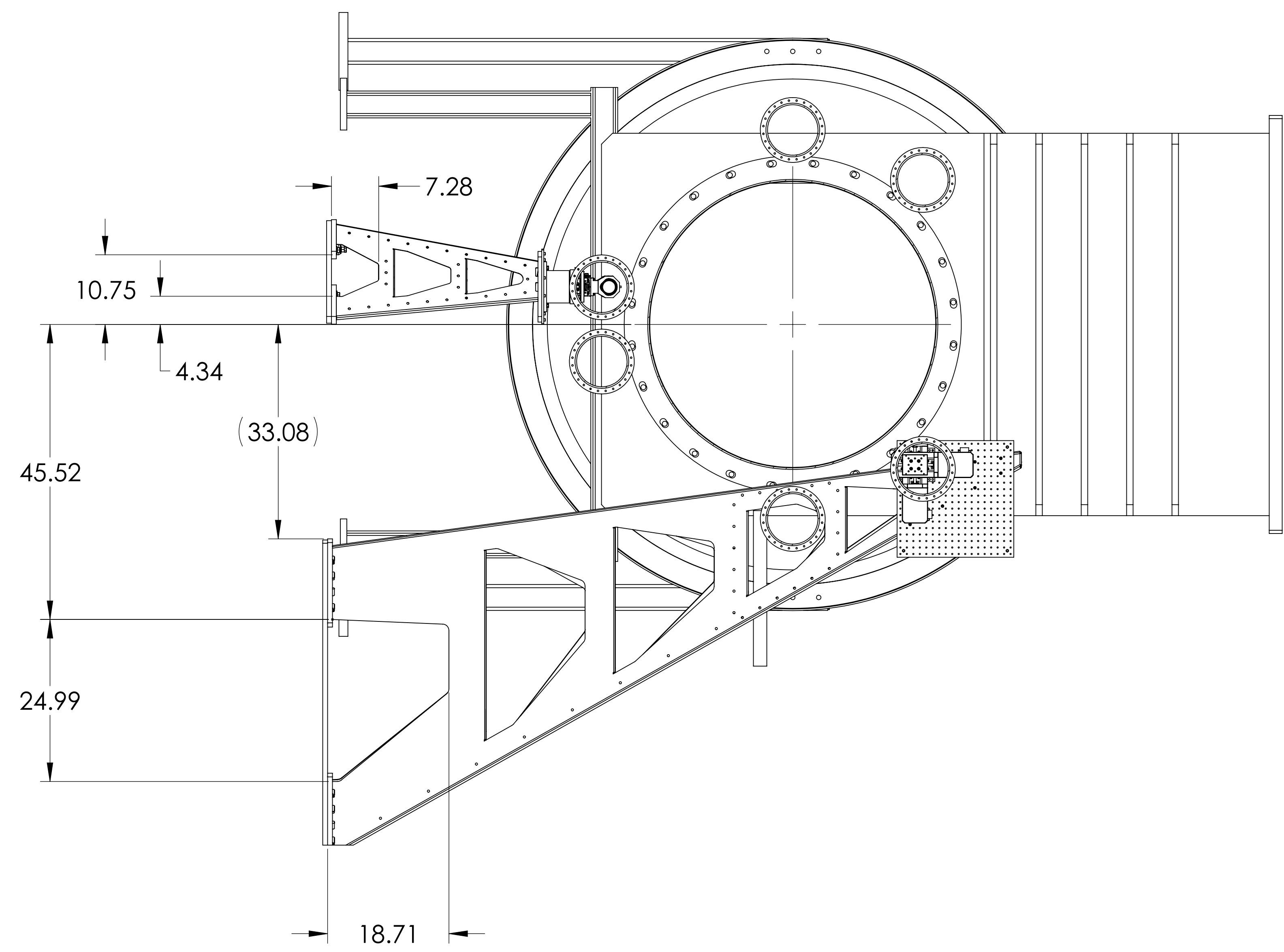
MATERIAL: N/A
 FINISH: N/A μinch

LIGO CALIFORNIA INSTITUTE OF TECHNOLOGY
 MASSACHUSETTS INSTITUTE OF TECHNOLOGY

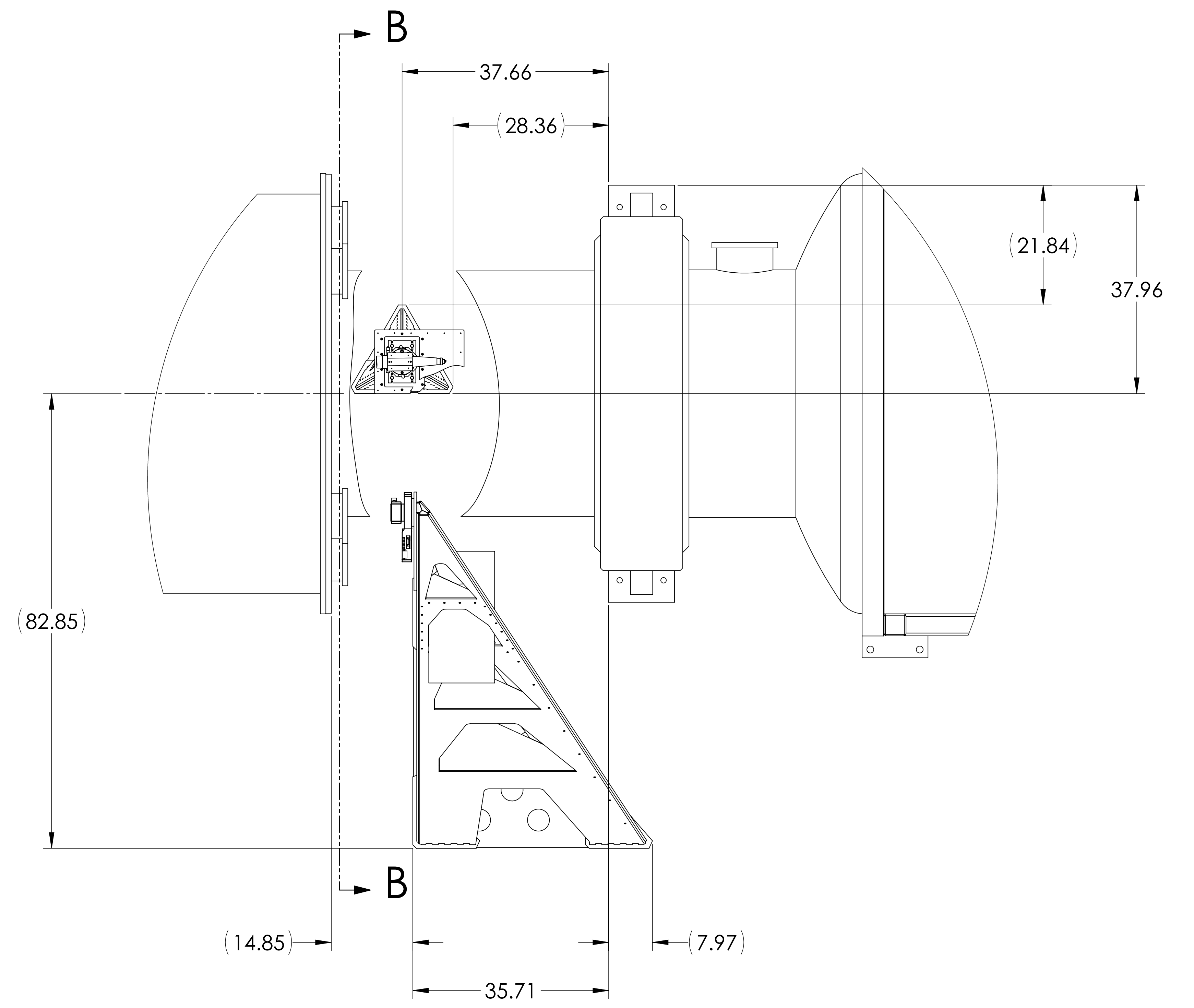
SYSTEM: NEXT ASSY

PART NAME	FLOOR OCCUPANCY, OPTICAL LEVERS, LLO CORNER STATION		
DESIGNER	C. CONLEY	DATE	14 JUL 2010
DRAFTER		CHECKER	
APPROVAL		SCALE	NONE PROJECTION
SUB-SYSTEM	AOS	SIZE	DWG. NO. G1000700
REV.			

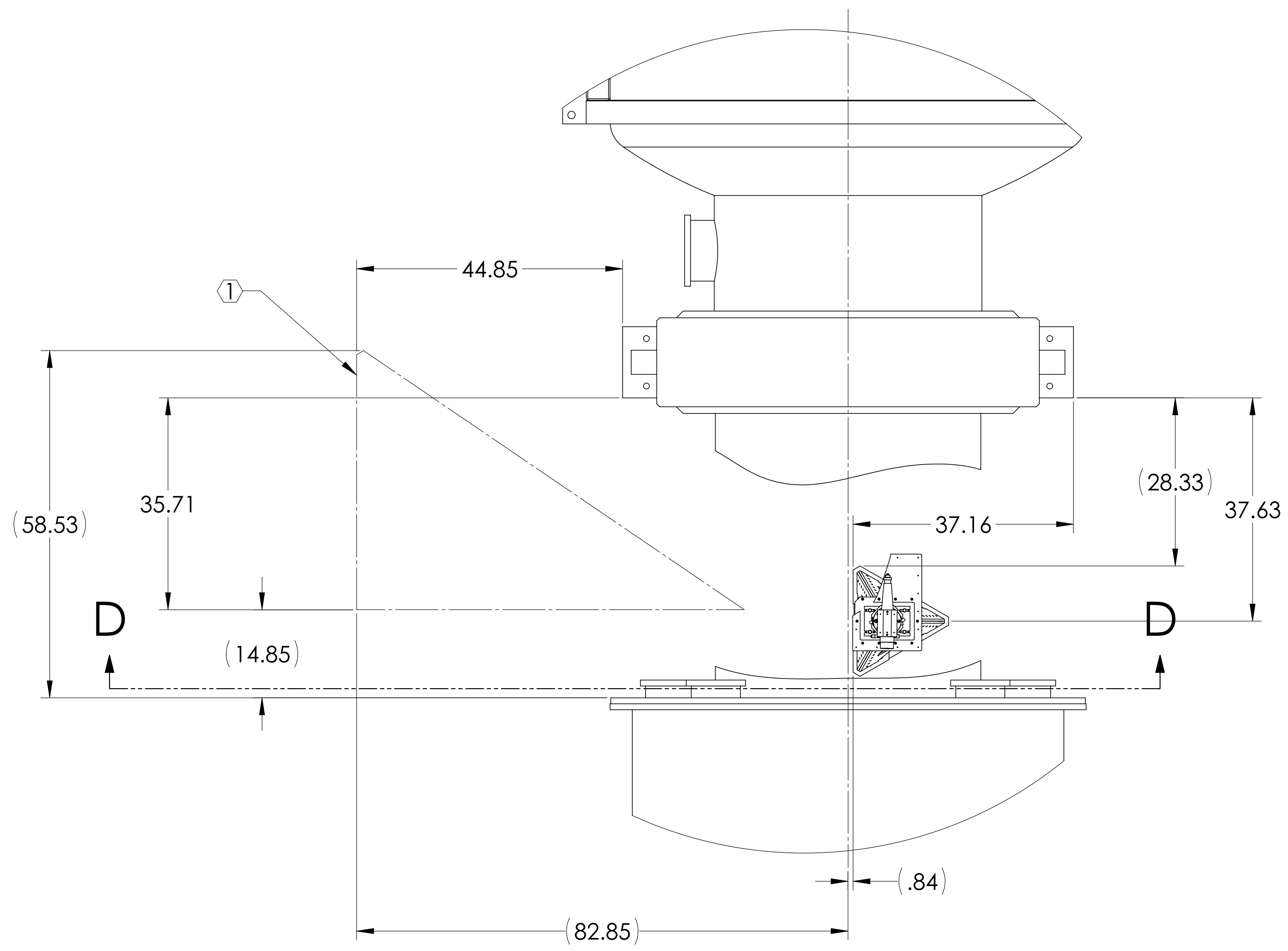
G:\200808\floor occupancy\llo corner station\llo corner station.dwg, 14 JUL 2010, REV. 004, DRAWING FILE REV. X.202



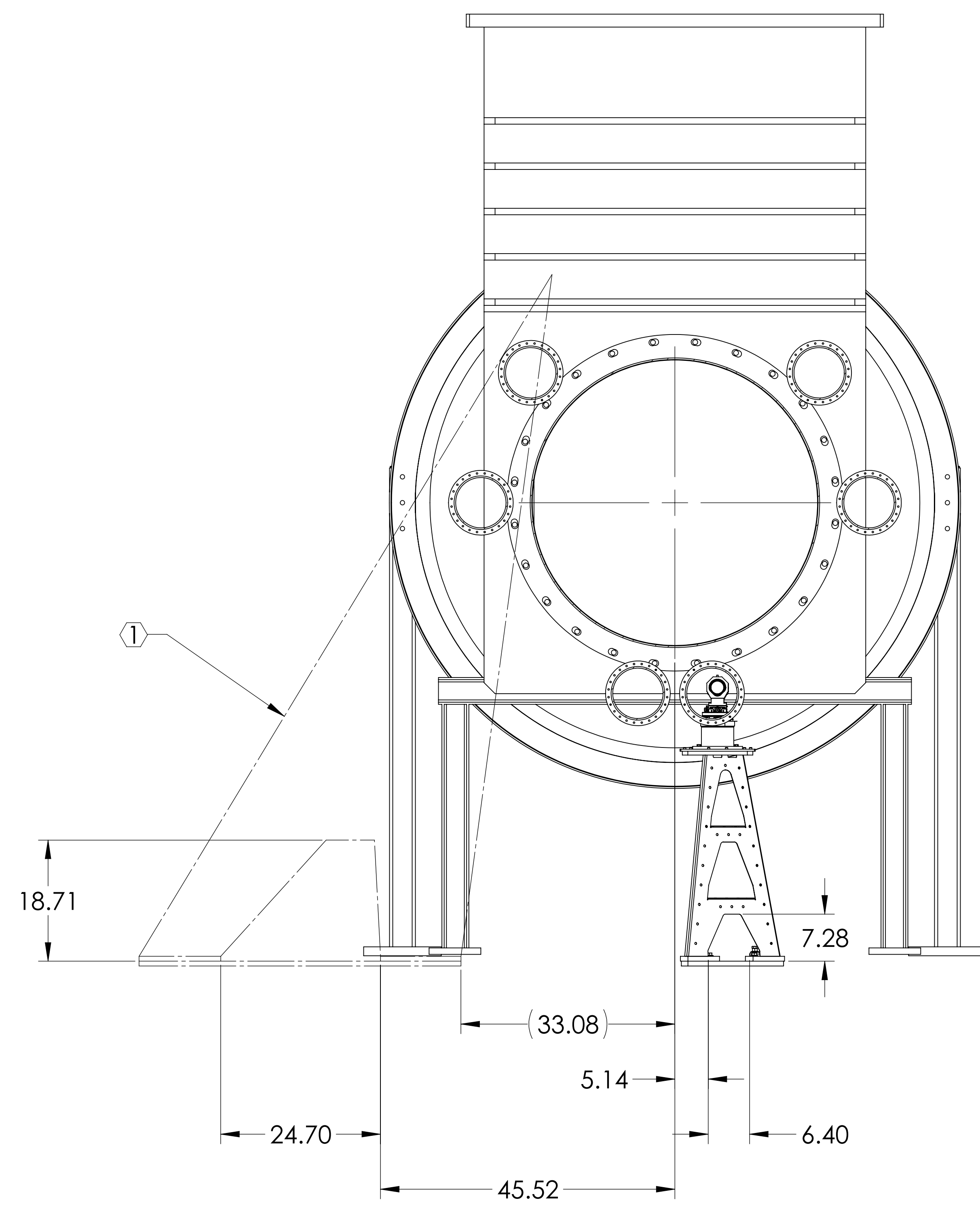
SECTION B-B



DETAIL A

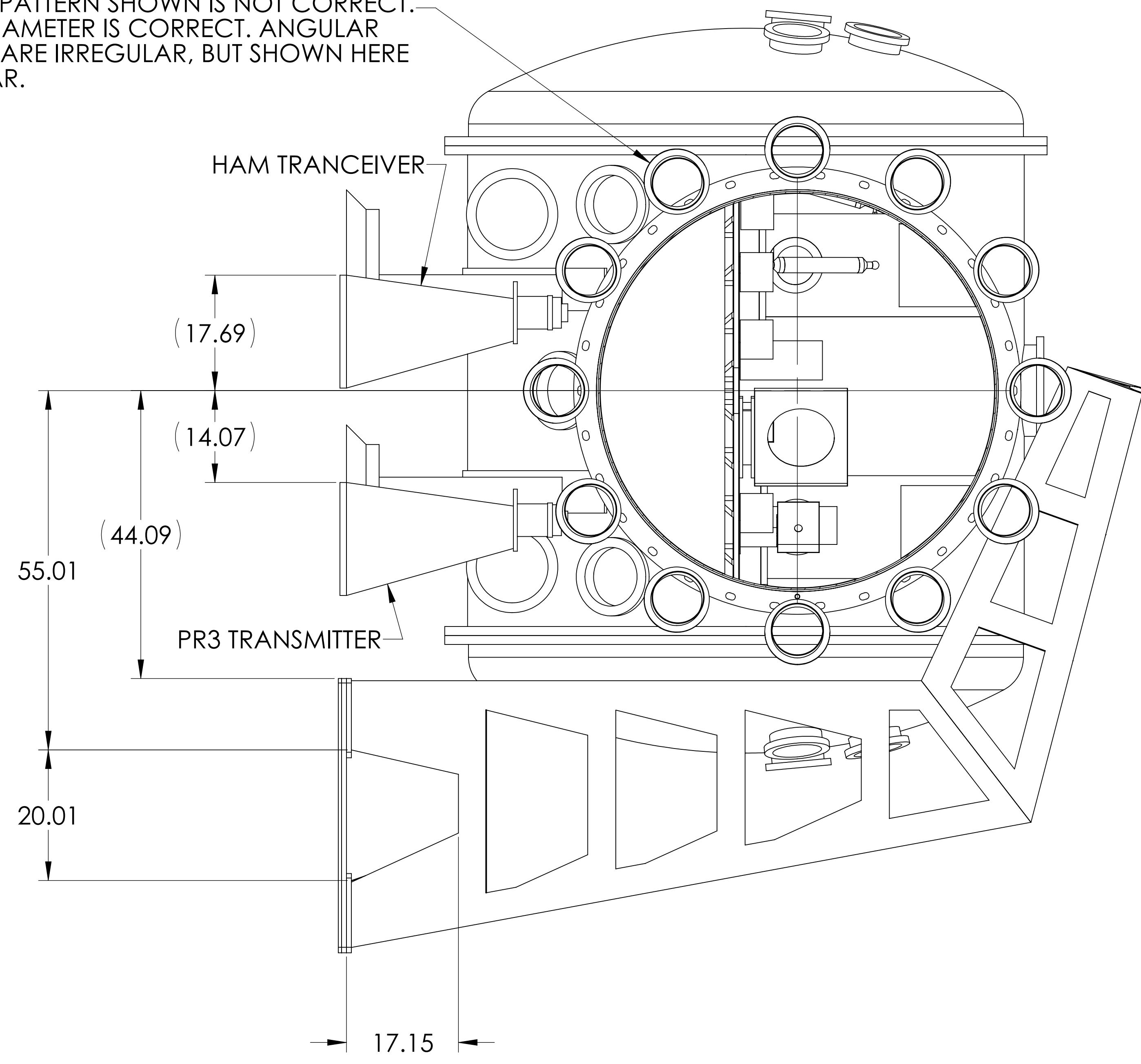


DETAIL C

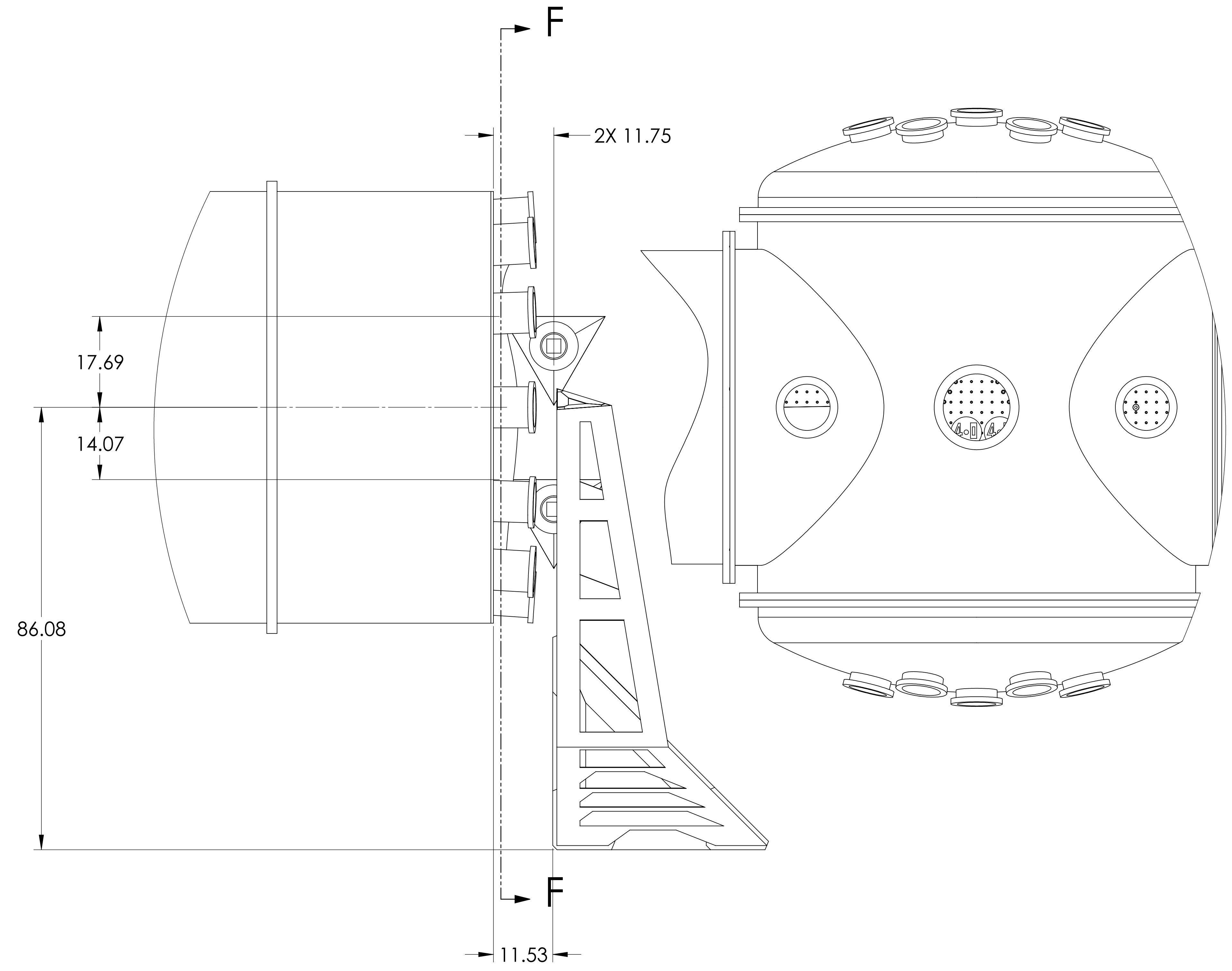


SECTION D-D

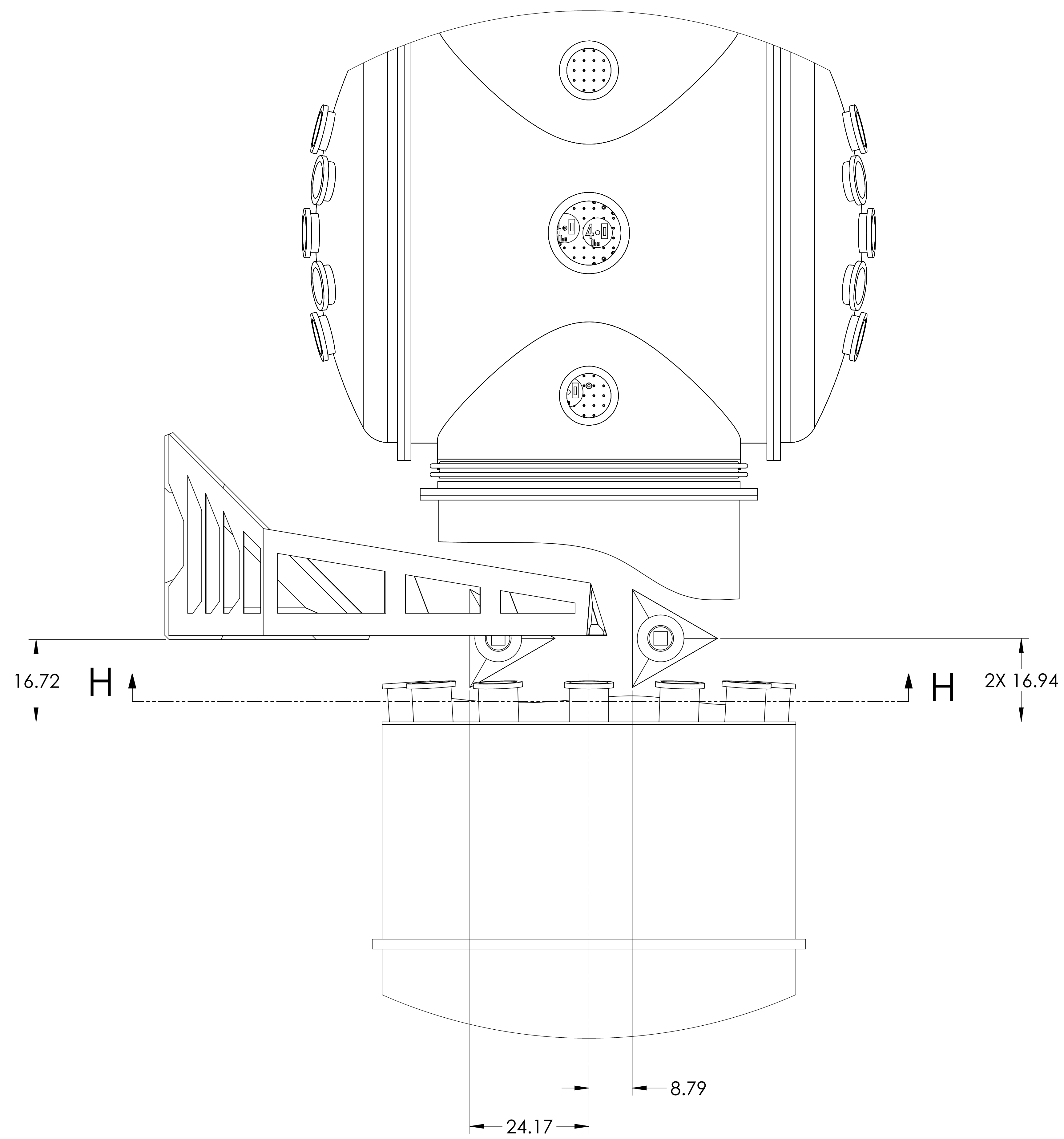
VIEWPORT PATTERN SHOWN IS NOT CORRECT.
 PATTERN DIAMETER IS CORRECT. ANGULAR
 SPACINGS ARE IRREGULAR, BUT SHOWN HERE
 AS REGULAR.



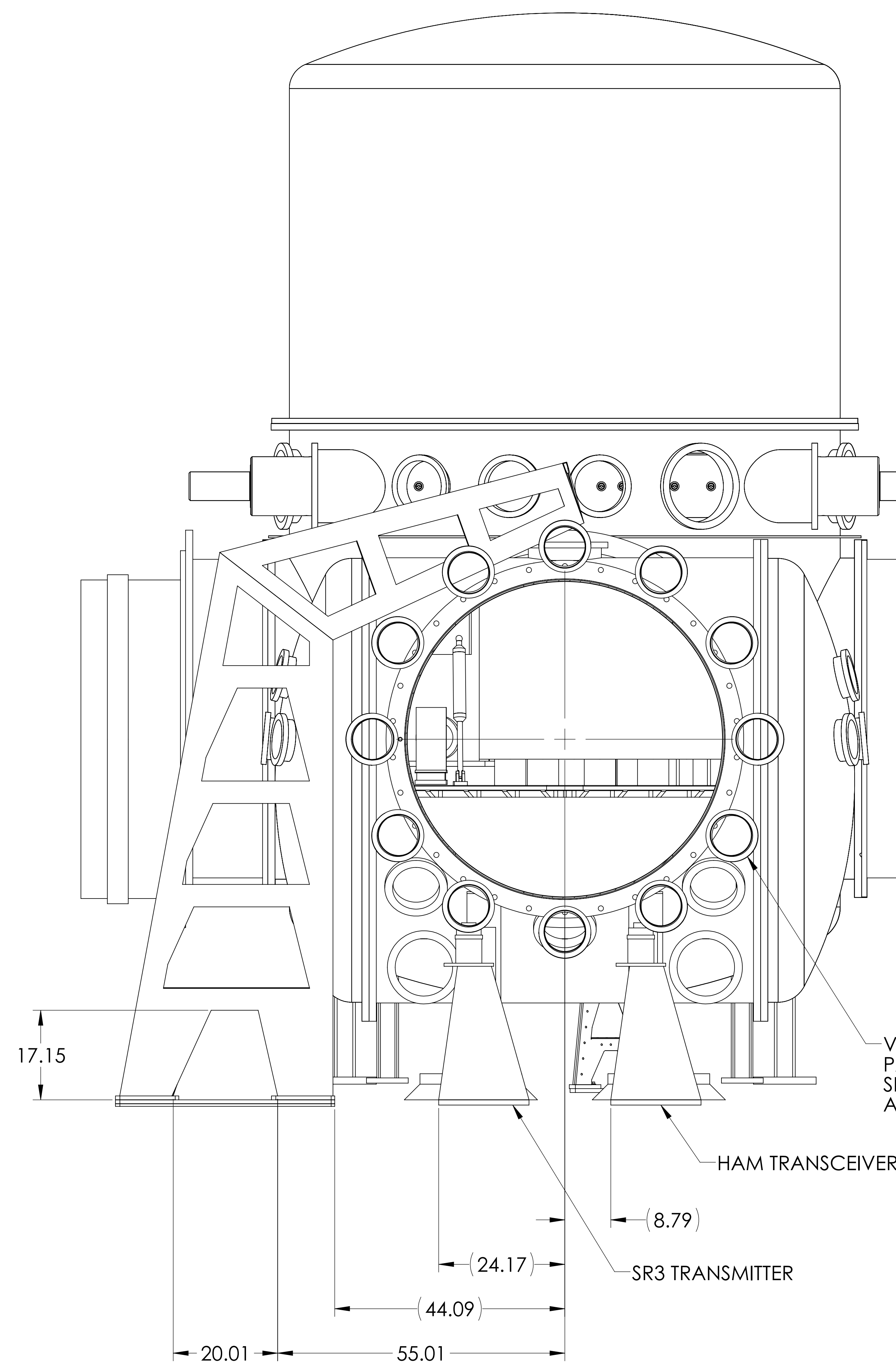
SECTION F-F



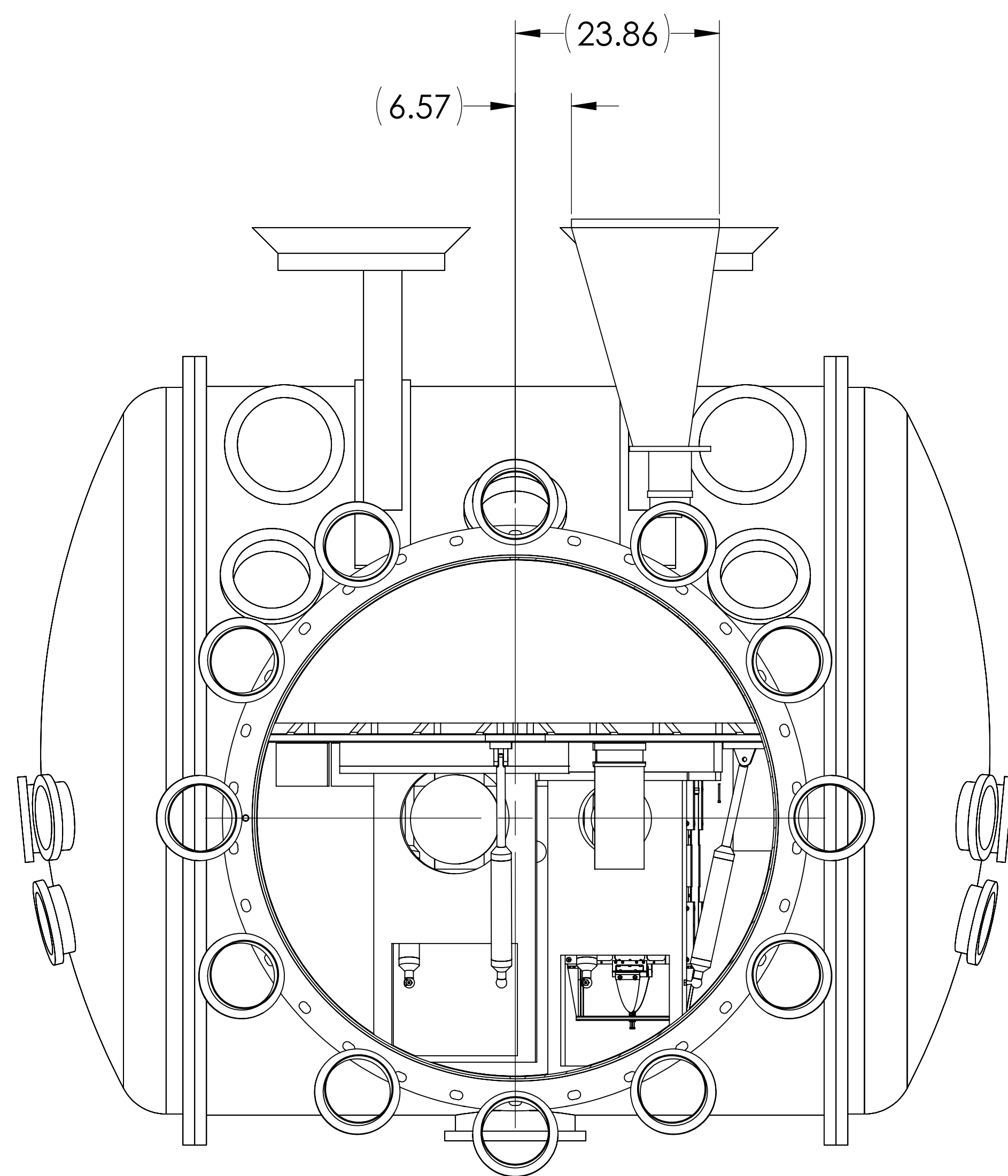
DETAIL E



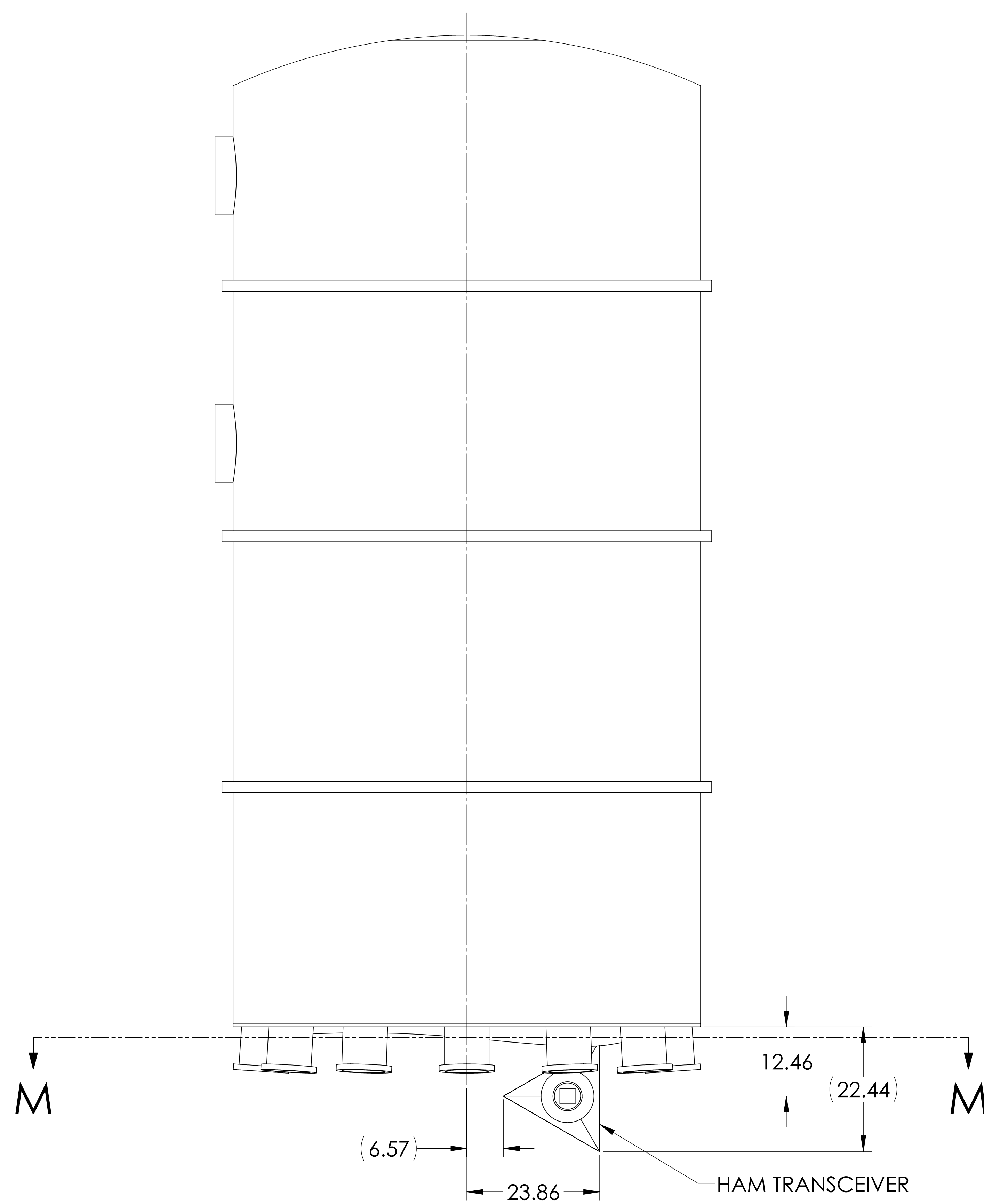
DETAIL G



SECTION H-H



SECTION M-M



DETAIL L