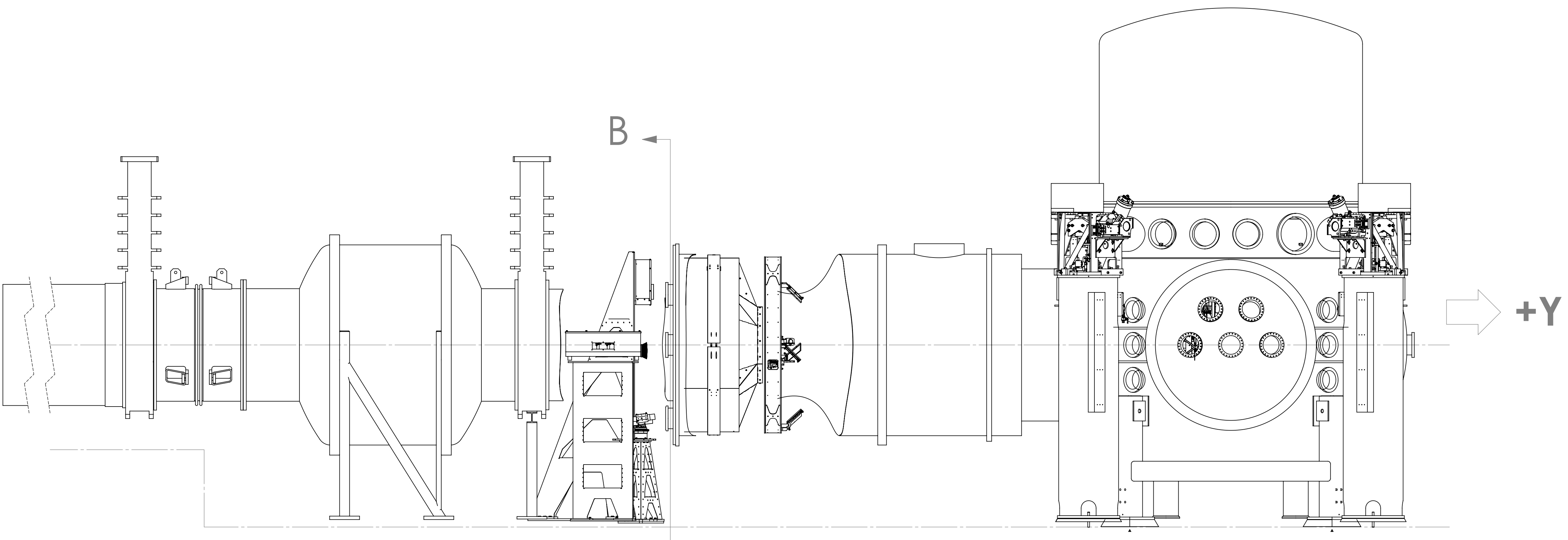
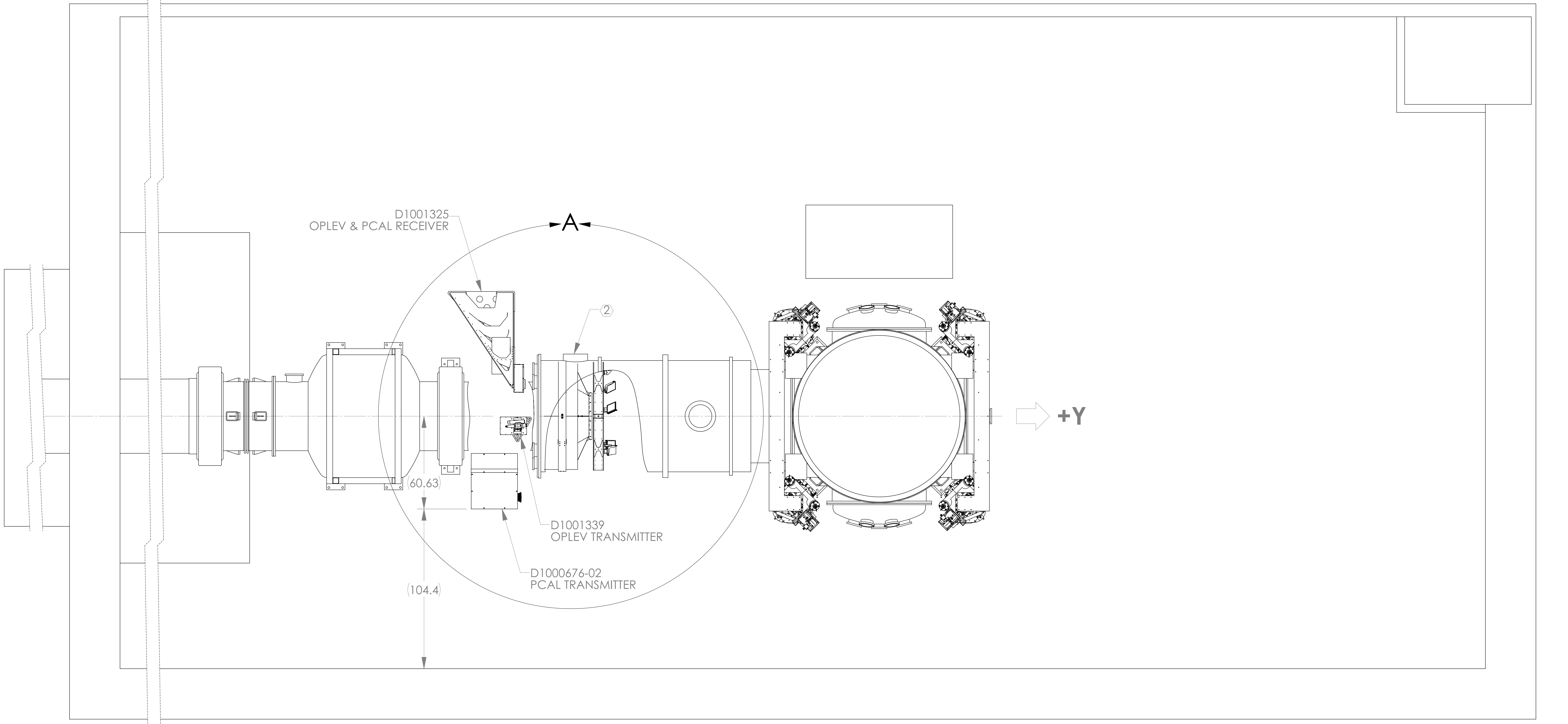


REV.	DATE	DCN #	BOM #
v4	10 MAY 2013	E1300418-v0	-
-	-	-	-
-	-	-	-

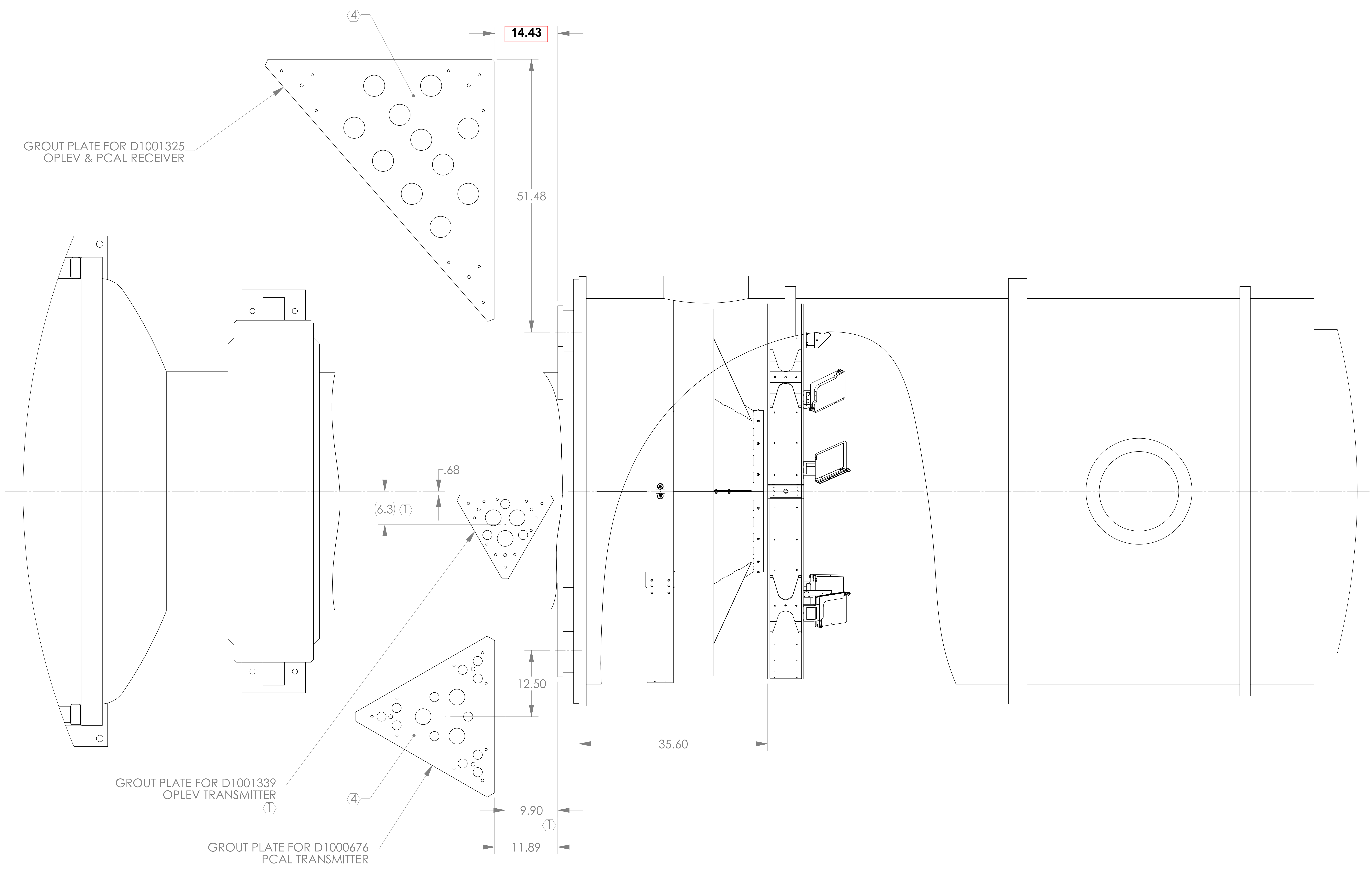


- NOTES:**
- ① NOTED GROUT PLATE INSTALLATION MAY BE ROTATED 180° ABOUT ITS CENTER HOLE IF PREFERABLE. ANCHOR PATTERN MUST BE ROTATED ACCORDINGLY.
 - ② TURBO PUMP AT THE NOTED VACUUM PORT MUST BE ORIENTED APPROPRIATELY TO PROVIDE CLEARANCE FOR THE INSTALLED D1001325 OPLV & PCAL RECEIVER.
 - ③ THE MEASURED HEIGHT FROM THE A-1 ADAPTER HORIZONTAL MIDPLANE VIEW PORT TO THE VEA FLOOR IS 72.50.
 - ④ PCAL GROUT PLATES TO BE LEVEL WITHIN .06" OVER ENTIRE SURFACE.

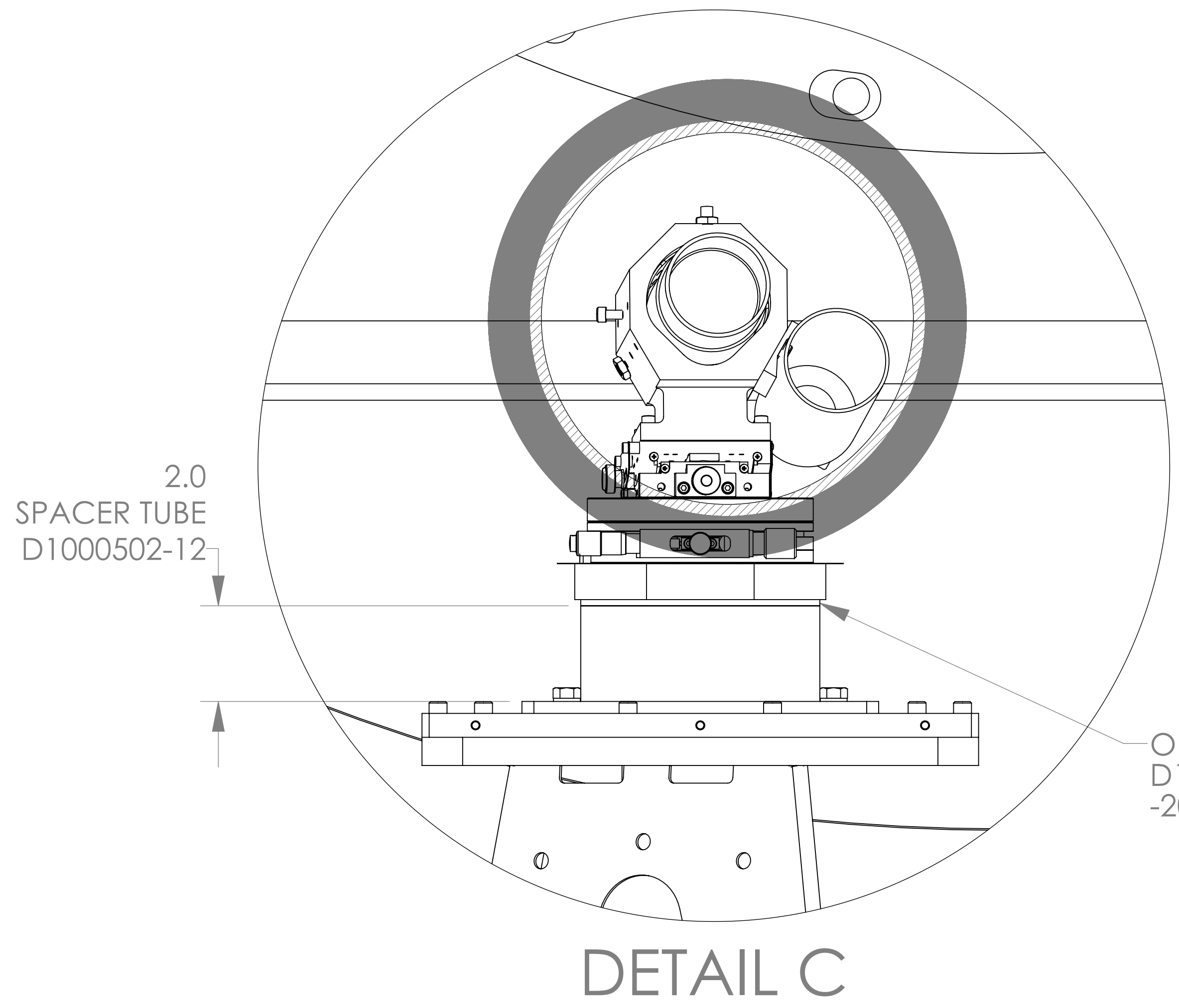
DIMENSIONS ARE IN INCHES		NOTES AND TOLERANCES: (UNLESS OTHERWISE SPECIFIED)		CALIFORNIA INSTITUTE OF TECHNOLOGY MASSACHUSETTS INSTITUTE OF TECHNOLOGY		PART NAME Floor Occupancy, OpLev & PCal, LLO Y-End Station	
TOLERANCES:	X ± .1	1. INTERPRET DRAWING PER ASME Y14.5-1994.	2. REMOVE ALL SHARP EDGES, R.02 MIN.	SYSTEM ADVANCED LIGO	SUB-SYSTEM AOS	DESIGNER C. CONLEY	SIZE DWG. NO.
.XX ± .05		3. DO NOT SCALE FROM DRAWING.	4. ALL MACHINING FLUIDS MUST BE FULLY SYNTHETIC, FULLY WATER SOLUBLE, AND FREE OF SULFUR, SILICONE, AND CHLORINE.	NEXT ASSY		10 NOV 2012	E
ANGULAR ± °				FINISH	--	SEE DCN	SCALE: NONE; PROJECTION:
				FINISH	--	SEE DCN	SCALE: NONE; PROJECTION:
				FINISH	--	SEE DCN	SCALE: NONE; PROJECTION:

G1000702-v3

SHEET 1 OF 3

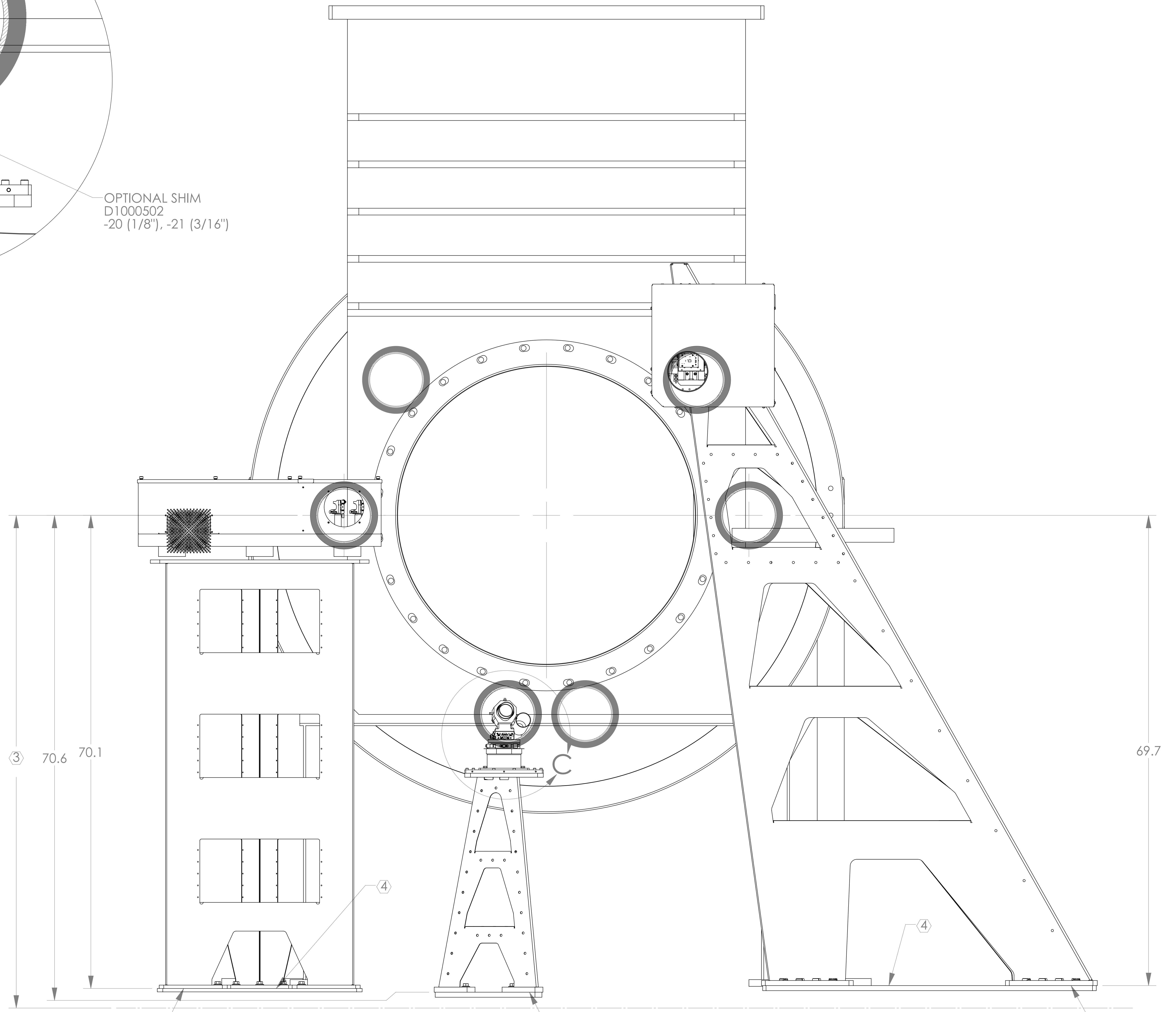


DETAIL A



OPTIONAL SHIM
D1000502
-20 (1/8\"), -21 (3/16\")

DETAIL C



D1000676-02
PCAL TRANSMITTER

D1001339
OPLEV TRANSMITTER

D1001325
OPLEV & PCAL
RECEIVER

SECTION B-B