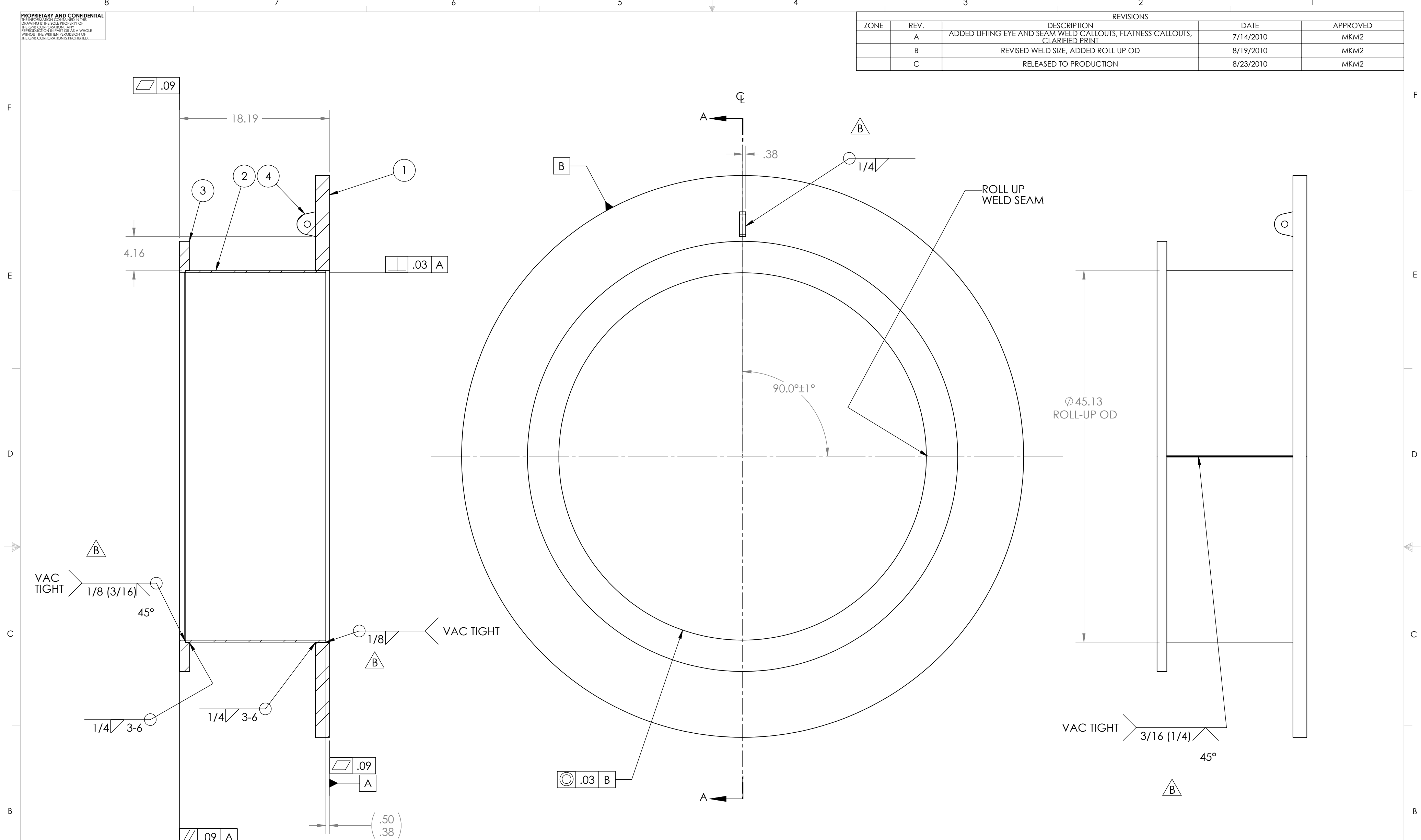


PROPRIETARY AND CONFIDENTIAL
 DRAWING IS THE SOLE PROPERTY OF
 THE GNB CORPORATION. ANY
 REPRODUCTION IN PART OR AS A WHOLE
 WITHOUT THE WRITTEN PERMISSION OF
 THE GNB CORPORATION IS PROHIBITED.

| REVISIONS | | | | |
|-----------|------|------------------------------------------------------------------------------|-----------|----------|
| ZONE | REV. | DESCRIPTION | DATE | APPROVED |
| | A | ADDED LIFTING EYE AND SEAM WELD CALLOUTS, FLATNESS CALLOUTS, CLARIFIED PRINT | 7/14/2010 | MKM2 |
| | B | REVISED WELD SIZE, ADDED ROLL UP OD | 8/19/2010 | MKM2 |
| | C | RELEASED TO PRODUCTION | 8/23/2010 | MKM2 |



SECTION A-A

- NOTES:
1. ALL WELD PREPS TO BE DONE BY TUNGSTEN CARBIDE CUTTING TOOLS ONLY
 2. WELD PER QP1750-W2, LIGO WELDING AND REPAIR PROCEDURE, LATEST REVISION
 3. CLEAN WELD WIRE AND SURFACES TO BE WELDED WITH CO2 SCRUBBING
 4. INTERNAL WELD SURFACE TO BE SMOOTH BUT NOT GROUND
 5. ALL WELDS TO BE GTAW UNLESS OTHERWISE NOTED
 6. ALL INTERNAL WELDS TO BE CONTINUOUS AND VACUUM TIGHT
 7. NO POST WELD HEAT TREATMENT IS REQUIRED

| ITEM NO. | PART NUMBER | DESCRIPTION | QTY. |
|----------|-------------|-----------------------------|------|
| 1 | 114288-00S | FLANGE, LARGE, ADAPTER A-16 | 1 |
| 2 | 114290-00S | ROLL-UP, ADAPTER A-16 | 1 |
| 3 | 114291-00S | FLANGE, SMALL, ADAPTER A-16 | 1 |
| 4 | 114294-00S | LUG, LIFTING, ADAPTERS | 1 |

MATERIAL: AISI 304/ AISI 304L DUAL CERT PER SA240

UNLESS OTHERWISE SPECIFIED:
 DIMENSIONS ARE IN INCHES
 TOLERANCES: FINISH
 ANGULAR: ± 0°30'
 .XX ±.03
 .XXX ±.005
 UNSPECIFIED FILLETS: R.015
 BREAK EDGES .010x45°
 REMOVE ALL BURRS
 // .1 WITHIN .03

WEIGHT: 1369.39#

APPROVALS: DATE
 DRAFTER MKM2 7/1/10
 CHECKER RW 7/9/10
 ENGINEER MKM2 7/1/10

GNB CORPORATION
 SCIENTIFIC AND INDUSTRIAL EQUIPMENT
 3200 DWIGHT RD. SUITE 100
 ELK GROVE, CA 95758
 916-395-3003 FAX: 916-395-3363
 www.gnbvalves.com

TITLE: **WELDMENT, INITIAL, ADAPTER A-16**

THIRD ANGLE PROJECTION

DO NOT SCALE DRAWING

C DWG. NO. 114287-00WS REV
 SCALE: 1:8 SHEET 1 OF 1 C