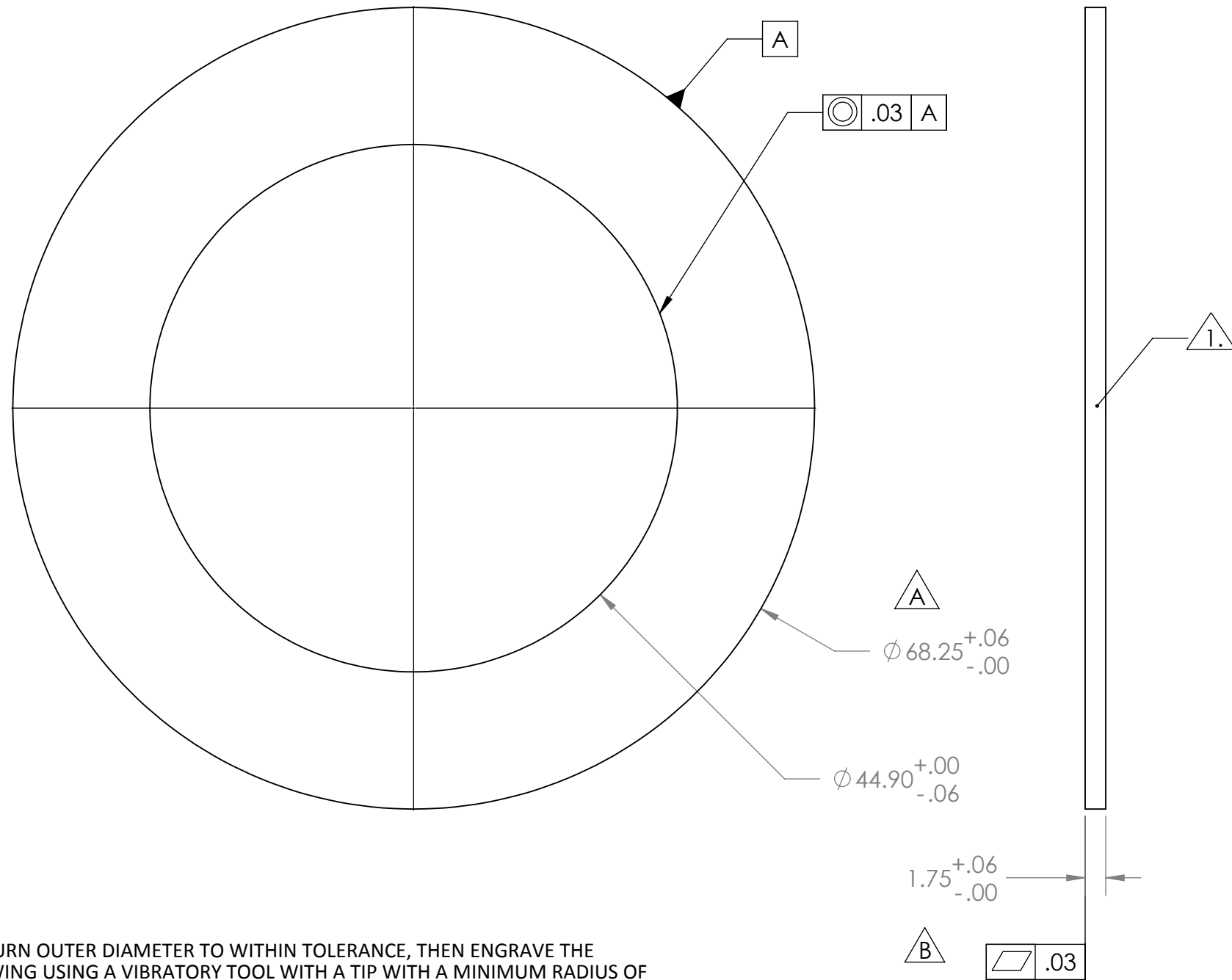


PROPRIETARY AND CONFIDENTIAL  
 THE INFORMATION CONTAINED IN THIS  
 DRAWING IS THE SOLE PROPERTY OF  
 GNB CORPORATION. ANY  
 REPRODUCTION IN PART OR AS A WHOLE  
 WITHOUT THE WRITTEN PERMISSION OF  
 GNB CORPORATION IS PROHIBITED.

REVISIONS				
ZONE	REV.	DESCRIPTION	DATE	APPROVED
	A	68.25 WAS 68.50	7/14/2010	MKM2
	B	1.75 WAS 1.25	7/19/2010	MKM2
	C	RELEASED TO PRODUCTION	8/20/2010	MKM2



NOTES:

1. TURN OUTER DIAMETER TO WITHIN TOLERANCE, THEN ENGRAVE THE FOLLOWING USING A VIBRATORY TOOL WITH A TIP WITH A MINIMUM RADIUS OF .005":
  - a. HEAT NUMBER
  - b. LOT NUMBER
  - c. PART NUMBER
2. PROVIDE A COUPON, SIZED 2" X 2", FROM THE SAME HEAT NUMBER, LOT, AND THICKNESS OF THE MATERIAL.
3. NO WELD SPLICES OR REPAIR WELDING ALLOWED
4. MATERIAL IDENTIFICATION TO BE MAINTAINED AT ALL TIMES. IF IDENTIFICATION IS LOST, TESTING REQUIRED FOR THE MATERIAL MUST BE REPEATED.
5. NO GRINDING ALLOWED
6. FORGING MUST BE PROTECTED FROM CONTAMINATION FROM CARBON STEEL OR HYDROCARBONS. KEEP FORGINGS PROTECTED AT ALL TIMES.
7. PACKAGE FORGINGS PER ASTM A-700.



DESCRIPTION FORGING, 1.75 THK, 44.90 ID, 68.50 OD		WEIGHT: 1049.53#		<p>SCIENTIFIC AND INDUSTRIAL EQUIPMENT</p> <p>3200 DWIGHT RD. SUITE 100        ELK GROVE, CA, 95758        916-395-3003 FAX: 916-395-3363        www.gnbvalves.com</p>
MATERIAL: AISI 304L PER ASME SPEC SA-182 GRADE F; MAX SULFUR CONTENT .006%		UNLESS OTHERWISE SPECIFIED: DIMENSIONS ARE IN INCHES TOLERANCES: FINISH ANGULAR: $\pm 0^{\circ}30'$ 250 .XX $\pm .06$ .XXX $\pm .005$ UNSPECIFIED FILLETS: R.015 BREAK EDGES .010x45° REMOVE ALL BURRS		
APPROVALS	DATE	DRAFTER MKM2 6/14/10		
CHECKER RW	6/14/10	ENGINEER MKM2 6/14/10		
TITLE: FORGING, FLANGE, 44.9 ID X 68.50 OD				
DO NOT SCALE DRAWING		B DWG. NO. 114289-00S	REV C	
SCALE: 1:12		SHEET 1 OF 1		

