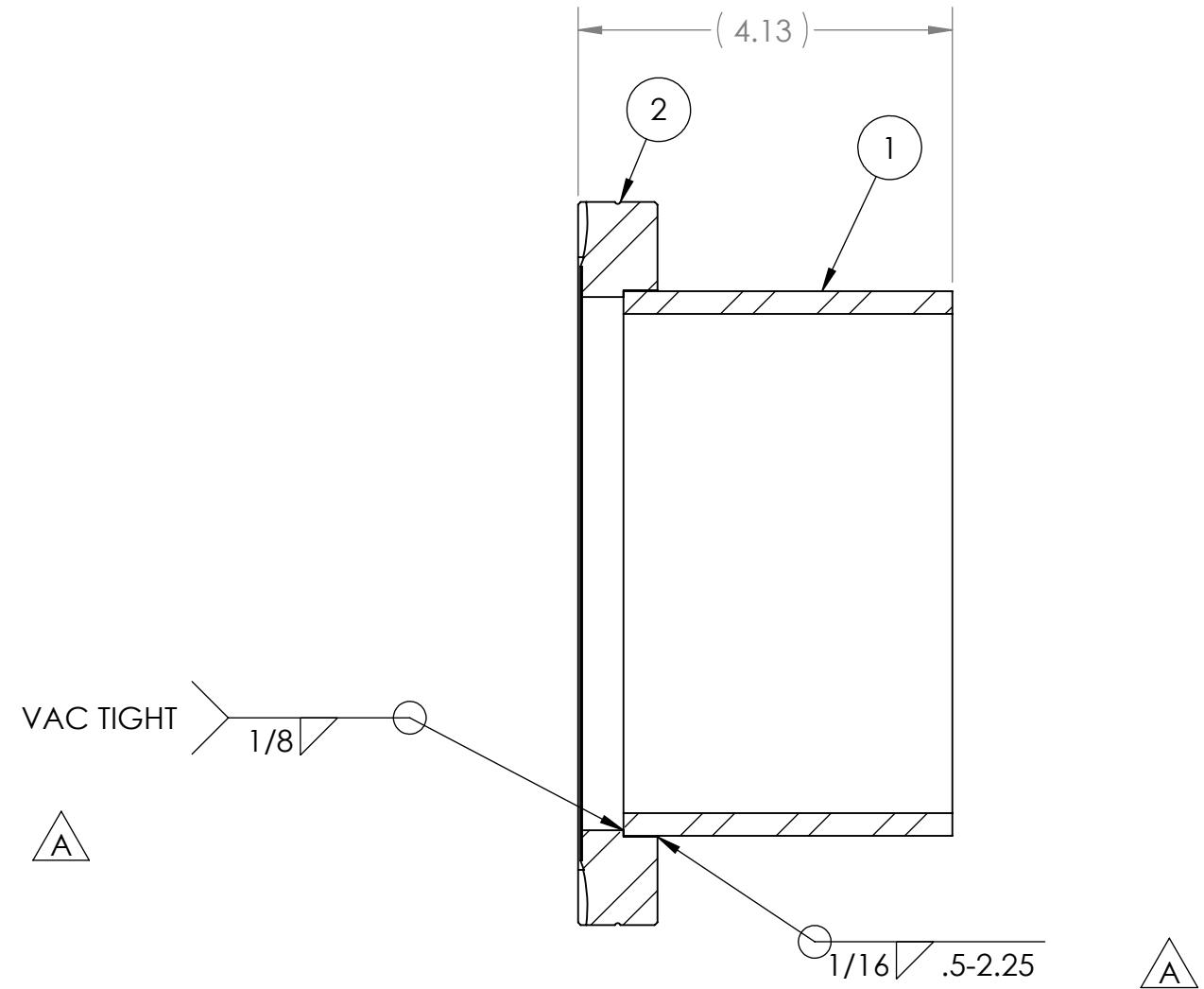
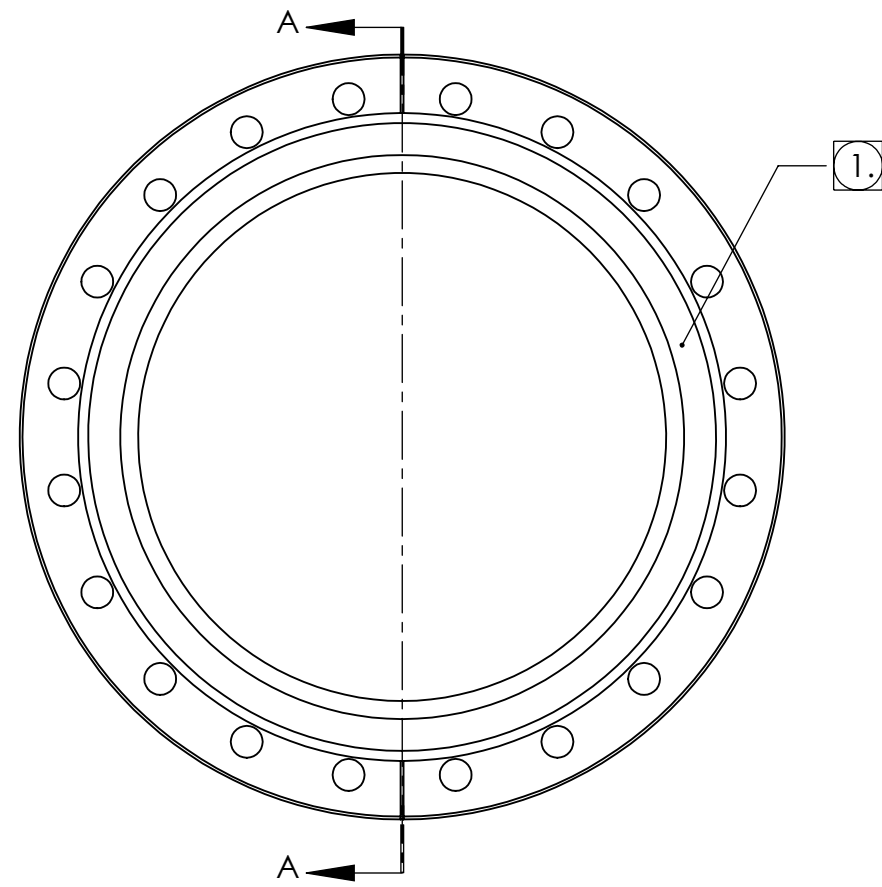


PROPRIETARY AND CONFIDENTIAL  
 THE INFORMATION CONTAINED IN THIS  
 DRAWING IS THE SOLE PROPERTY OF  
 GNB CORPORATION. ANY  
 REPRODUCTION IN PART OR AS A WHOLE  
 WITHOUT THE WRITTEN PERMISSION OF  
 GNB CORPORATION IS PROHIBITED.

REVISIONS				
ZONE	REV.	DESCRIPTION	DATE	APPROVED
	A	REDUCED WELD, ADDED OVERALL LENGTH AS REF DIM.	8/20/2010	MKM2
	B	RELEASED TO PRODUCTION	8/23/2010	MKM2



SECTION A-A

NOTES:

- 1. VACUUM SEALING SURFACE
- 2. ALL WELD PREPS TO BE DONE BY TUNGSTEN CARBIDE CUTTING TOOLS ONLY
- 3. WELD PER QP1750-W2, LIGO WELDING AND REPAIR PROCEDURE, LATEST REVISION
- 4. CLEAN WELD WIRE AND SURFACES TO BE WELDED WITH CO2 SCRUBBING
- 5. INTERNAL WELD SURFACE TO BE SMOOTH BUT NOT GROUND
- 6. ALL WELDS TO BE GTAW UNLESS OTHERWISE NOTED
- 7. ALL INTERNAL WELDS TO BE CONTINUOUS AND VACUUM TIGHT
- 8. NO POST WELD HEAT TREATMENT IS REQUIRED

ITEM NO.	PART NUMBER	DESCRIPTION	QTY.
1	114433-00S	TUBE, 8" CF PORT	1
2	800-600N	(NORCAL) FLANGE, CF, 8" OD, THRU HOLE, NR	1

MATERIAL: AISI 304/AISI 304L DUAL CERT PER SA-240

UNLESS OTHERWISE SPECIFIED:  
 DIMENSIONS ARE IN INCHES  
 TOLERANCES:  
 ANGULAR: ± 0°30'  
 .XX ± .03  
 .XXX ± .005  
 UNSPECIFIED FILLETS: R.015  
 BREAK EDGES .010x45°  
 REMOVE ALL BURRS

//, □, ⊥ WITHIN .03

THIRD ANGLE PROJECTION



WEIGHT: 9.77#	
APPROVALS	DATE
DRAFTER MKM2	7/26/10
CHECKER ER	8/17/10
ENGINEER MKM2	7/26/10

**GNB CORPORATION**  
 SCIENTIFIC AND INDUSTRIAL EQUIPMENT  
 3200 DWIGHT RD. SUITE 100  
 ELK GROVE, CA, 95758  
 916-395-3003 FAX: 916-395-3363  
 www.gnbvalves.com

TITLE: <b>PORT, 8" CF, WELDMENT</b> A-16	
DO NOT SCALE DRAWING	DWG. NO. <b>B</b> 114295-00WS
SCALE: 1:2	REV B
SHEET 1 OF 1	