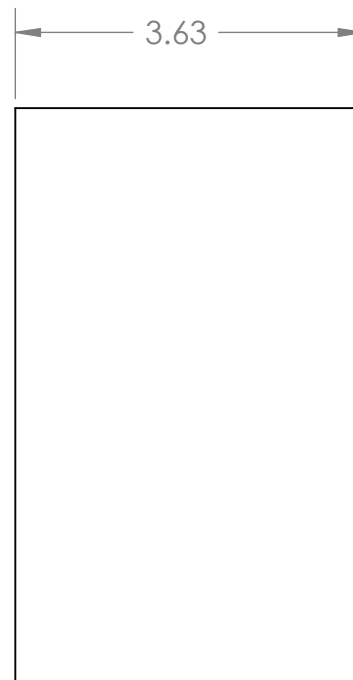
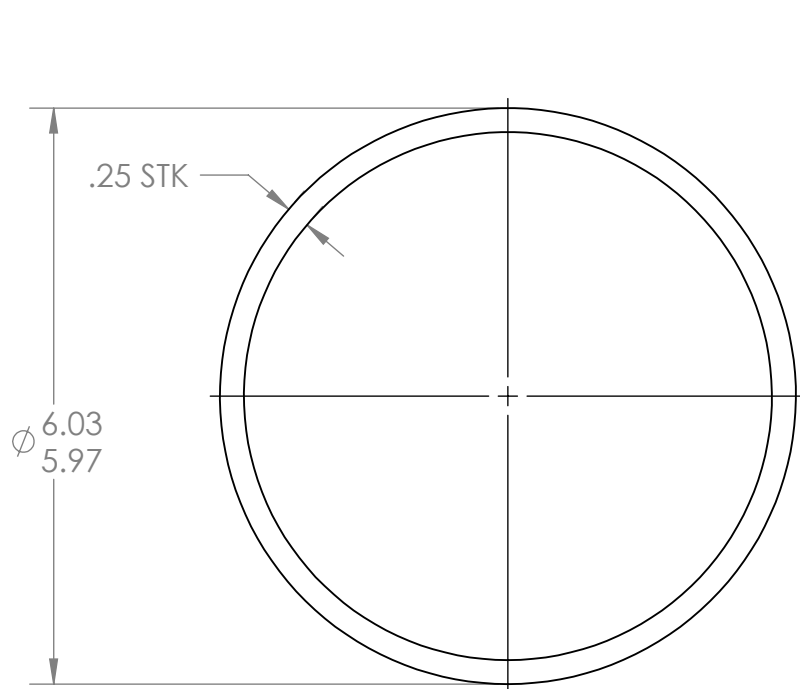


PROPRIETARY AND CONFIDENTIAL
 THE INFORMATION CONTAINED IN THIS
 DRAWING IS THE SOLE PROPERTY OF
 GNB CORPORATION. ANY
 REPRODUCTION IN PART OR AS A WHOLE
 WITHOUT THE WRITTEN PERMISSION OF
 GNB CORPORATION IS PROHIBITED.

REVISIONS				
ZONE	REV.	DESCRIPTION	DATE	APPROVED
	A	ADDED MACH. NOTE 5, RELEASED TO PRODUCTION	8/23/2010	MKM2



- NOTES:
1. THE FOLLOWING ARE NOT ALLOWED: GRINDING, HONING, LAPPING, POLISHING, BUFFING, SANDING, BLASTING.
 2. NO HYDROCARBONS ALLOWED IN THE COOLANT. COOLANT LIMITS AS FOLLOWS
 - a. WATER LEACHABLE CHLORIDES: 100PPM
 - b. TOTAL HALOGENS (INCLUDING CHLORIDES): 1000PPM
 - c. TOTAL SULFUR: 1000PPM
 3. DO NOT ALLOW PART TO BE CONTAMINATED BY CARBON STEEL OR IRON CONTACT.
 4. MACHINING TO BE IN LINE WITH LIGO SPECIFICATION E0900406, LATEST REVISION.
 5. MACHINE OD IF NECESSARY TO MEET OD TOLERANCE



DESCRIPTION: TUBE, 6.00 OD, .25 WALL, 3.63 LG		 SCIENTIFIC AND INDUSTRIAL EQUIPMENT 3200 DWIGHT RD, SUITE 100 ELK GROVE, CA 95758 916-395-3003 FAX: 916-395-3363 WWW.GNBVALVES.COM															
MATERIAL: AISI 304/AISI 304L DUAL CERT PER SA-240																	
UNLESS OTHERWISE SPECIFIED:	WEIGHT: 4.73 #	DWG. NO. A 114433-00S SCALE: 1:2 SHEET 1 OF 1															
DIMENSIONS ARE IN INCHES	<table border="1"> <thead> <tr> <th colspan="3">APPROVALS</th> </tr> <tr> <th></th> <th>NAME</th> <th>DATE</th> </tr> </thead> <tbody> <tr> <td>DRAFTER</td> <td>MKM2</td> <td>7/26/10</td> </tr> <tr> <td>CHECKER</td> <td>ER</td> <td>8/17/10</td> </tr> <tr> <td>ENGINEER</td> <td>MKM2</td> <td>7/26/10</td> </tr> </tbody> </table>		APPROVALS				NAME	DATE	DRAFTER	MKM2	7/26/10	CHECKER	ER	8/17/10	ENGINEER	MKM2	7/26/10
APPROVALS																	
			NAME	DATE													
DRAFTER	MKM2	7/26/10															
CHECKER	ER	8/17/10															
ENGINEER	MKM2	7/26/10															
TOLERANCES:																	
ANGULAR: $\pm 0^{\circ}30'$	FINISH 125																
.XX $\pm .03$		TITLE: TUBE, 8" CF PORT															
.XXX $\pm .005$																	
UNSPECIFIED FILLETS: R.015																	
BREAK EDGES .010 x 45°																	
REMOVE ALL BURRS																	
// □ ⊥ WITHIN .03																	
THIRD ANGLE PROJECTION																	
		DO NOT SCALE DRAWING															