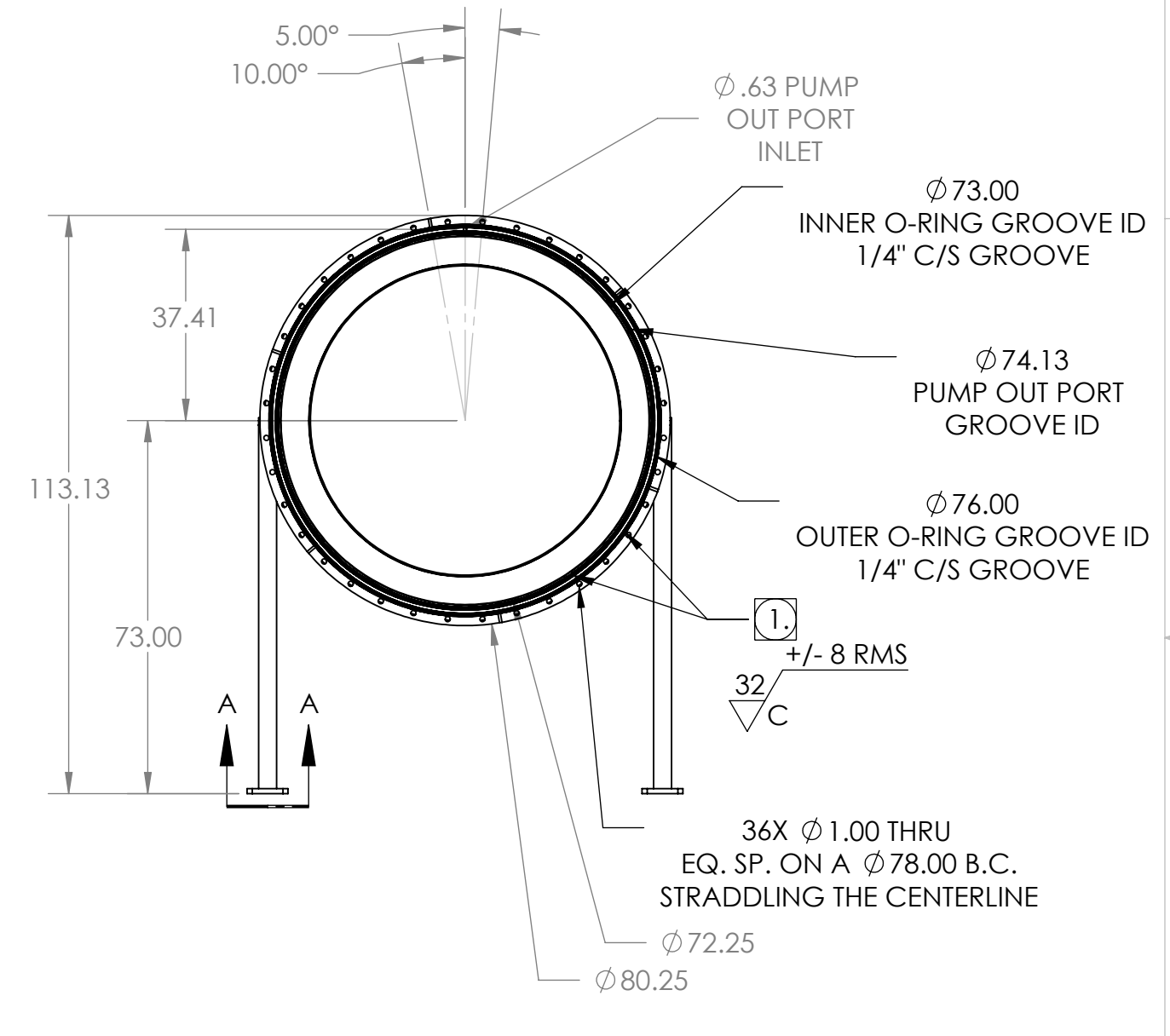
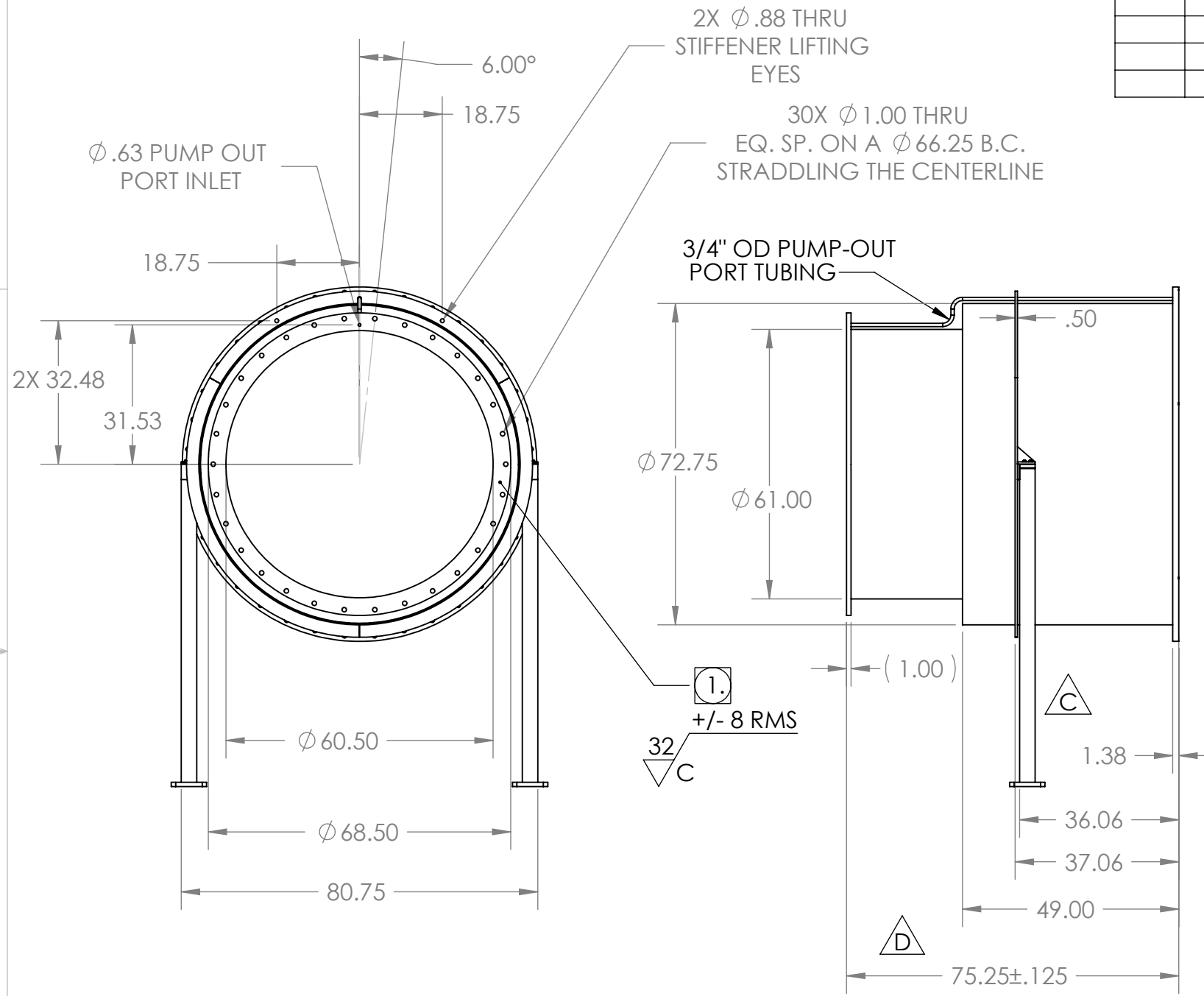
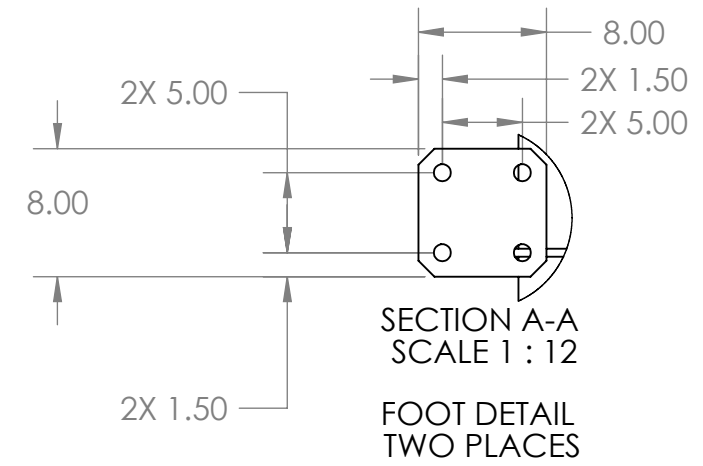


PROPRIETARY AND CONFIDENTIAL
 THE INFORMATION CONTAINED IN THIS
 DRAWING IS THE SOLE PROPERTY OF
 GNB CORPORATION. ANY
 REPRODUCTION IN PART OR AS A WHOLE
 WITHOUT THE WRITTEN PERMISSION OF
 GNB CORPORATION IS PROHIBITED.

REVISIONS				
ZONE	REV.	DESCRIPTION	DATE	APPROVED
	A	REVISED MODEL TO MATCH MFG PROCESSES	6/9/10	MKM2
	B	REVISED TOLERANCE BLOCK, GD&T TOLERANCE WAS .05, NOW .03	6/24/10	MKM2
	C	ADDED STAND AND BRACKETRY	7/30/2010	MKM2
	D	72.25 WAS 72.00	8/18/2010	MKM2
	E	RELEASED TO PRODUCTION	8/20/2010	MKM2



NOTES:
 1. VACUUM SEALING SURFACE



MATERIAL: AISI 304/AISI 304L DUAL CERT PER SA-240

UNLESS OTHERWISE SPECIFIED:
 DIMENSIONS ARE IN INCHES
 TOLERANCES:
 ANGULAR: $\pm 0^{\circ}30'$
 .XX $\pm .06$
 .XXX $\pm .005$
 UNSPECIFIED FILLETS: R.015
 BREAK EDGES .010x45°
 REMOVE ALL BURRS

//, /, ⊥ WITHIN .03

THIRD ANGLE PROJECTION



WEIGHT: 2608.18#

APPROVALS	DATE
DRAFTER MKM2	6/9/10
CHECKER RW	6/15/10
ENGINEER MKM2	6/9/10

TITLE:

DO NOT SCALE
DRAWING

GNB CORPORATION
 SCIENTIFIC AND INDUSTRIAL EQUIPMENT

3200 DWIGHT RD. SUITE 100
 ELK GROVE, CA, 95758
 916-395-3003 FAX: 916-395-3363
 www.gnbvalves.com

OUTLINE, ADAPTER A-18

SCALE: 1:32	DWG. NO. 114143-00	REV E
SHEET 1 OF 1		