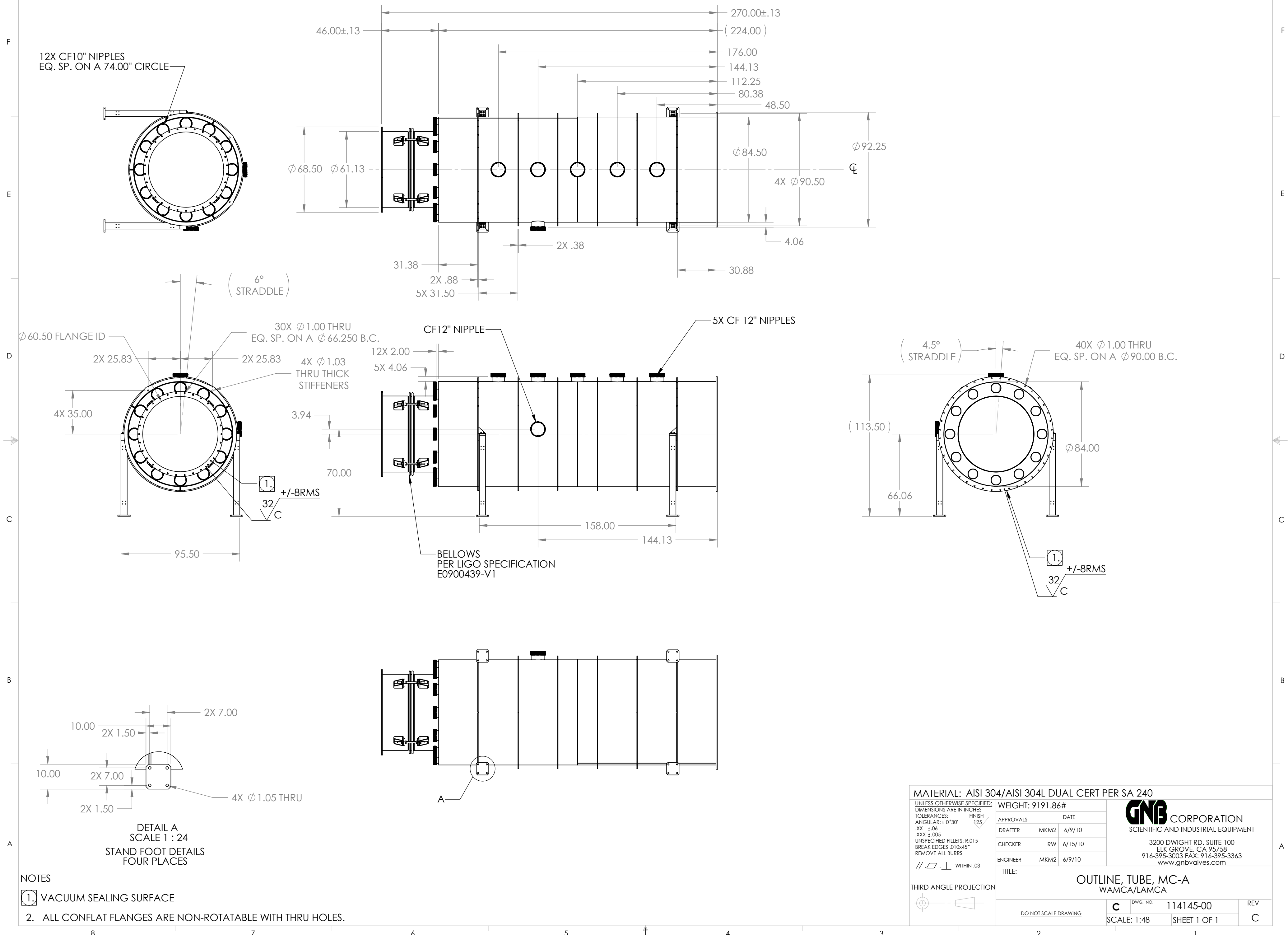


PROPRIETARY AND CONFIDENTIAL
 DRAWING IS THE SOLE PROPERTY OF
 THE GNB CORPORATION. ANY
 REPRODUCTION IN PART OR AS A WHOLE
 WITHOUT THE WRITTEN PERMISSION OF
 THE GNB CORPORATION IS PROHIBITED.

REVISIONS				
ZONE	REV.	DESCRIPTION	DATE	APPROVED
	A	REVISED MODEL TO MATCH CONSTRUCTION MODELS	6/9/10	MKM2
	B	REVISED TOLERANCE BLOCK, GD&T TOLERANCE WAS .01, NOW .03	6/24/10	MKM2
	C	SIDE PORT IS NOW 12" OD CF PORT, RELEASE TO PRODUCTION	8/20/2010	MKM2



MATERIAL: AISI 304/AISI 304L DUAL CERT PER SA 240

UNLESS OTHERWISE SPECIFIED:
 DIMENSIONS ARE IN INCHES
 TOLERANCES: FINISH
 ANGULAR: ± 0°30' 125
 .XX ±.06
 .XXX ±.005
 UNSPECIFIED FILLETS: R.015
 BREAK EDGES .010x45°
 REMOVE ALL BURRS

WEIGHT: 9191.86#

APPROVALS	DATE
DRAFTER MKM2	6/9/10
CHECKER RW	6/15/10
ENGINEER MKM2	6/9/10

GNB CORPORATION
 SCIENTIFIC AND INDUSTRIAL EQUIPMENT
 3200 DWIGHT RD. SUITE 100
 ELK GROVE, CA 95758
 916-395-3003 FAX: 916-395-3363
 www.gnbvalves.com

TITLE: OUTLINE, TUBE, MC-A
WAMCA/LAMCA

THIRD ANGLE PROJECTION

DO NOT SCALE DRAWING

SCALE: 1:48

DWG. NO. 114145-00

SHEET 1 OF 1

REV C