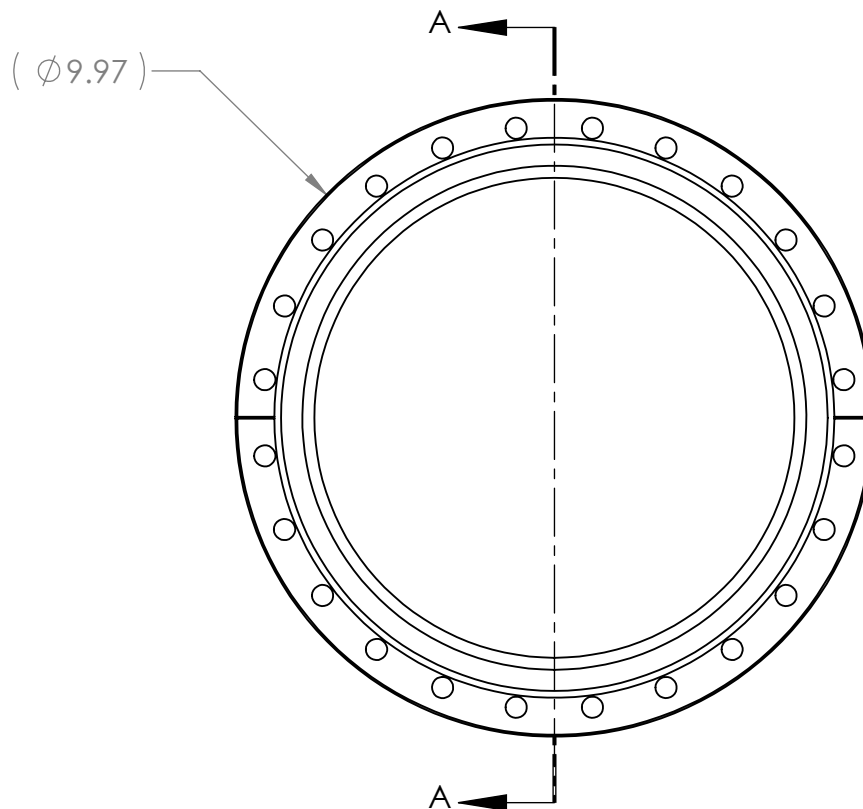
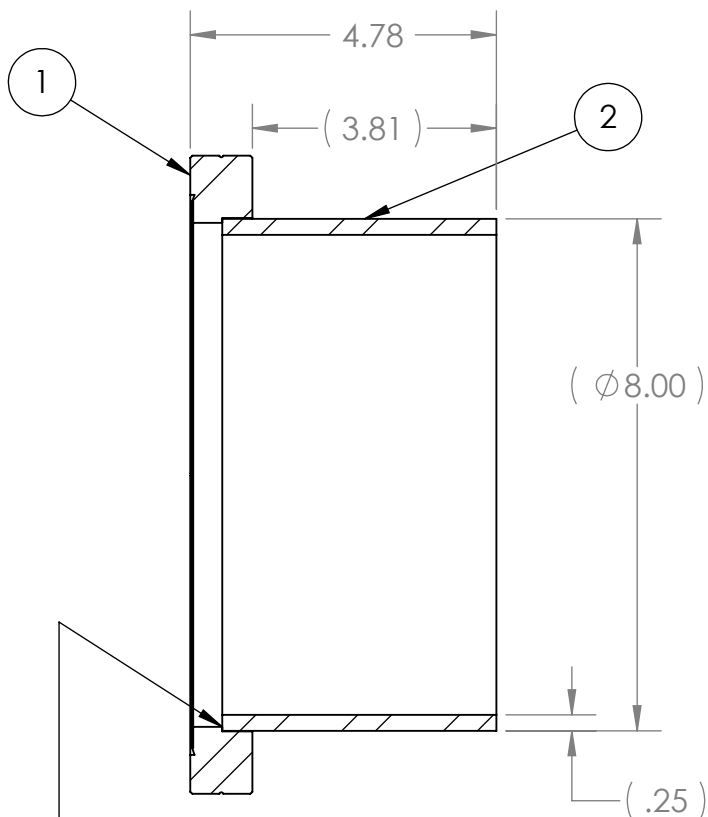
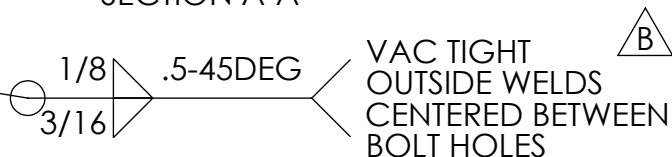


PROPRIETARY AND CONFIDENTIAL  
 THE INFORMATION CONTAINED IN THIS  
 DRAWING IS THE SOLE PROPERTY OF  
 GNB CORPORATION. ANY  
 REPRODUCTION IN PART OR AS A WHOLE  
 WITHOUT THE WRITTEN PERMISSION OF  
 GNB CORPORATION IS PROHIBITED.

		REVISIONS		
ZONE	REV.	DESCRIPTION	DATE	APPROVED
	A	REVISED COMPONENT TO BE WELDMENT INSTEAD OF COTS PART	7/13/2010	MKM2
	B	REVISED WELD CALL-OUTS	8/11/2010	MKM2
	C	RELEASED TO PRODUCTION	8/24/2010	MKM2



SECTION A-A



- NOTES:**
- THE FOLLOWING ARE NOT ALLOWED: GRINDING, HONING, LAPPING, POLISHING, BUFFING, SANDING, BLASTING.
  - NO HYDROCARBONS ALLOWED IN THE COOLANT. COOLANT LIMITS AS FOLLOWS
    - WATER LEACHABLE CHLORIDES: 100PPM
    - TOTAL HALOGENS (INCLUDING CHLORIDES): 1000PPM
    - TOTAL SULFUR: 1000PPM
  - DO NOT ALLOW PART TO BE CONTAMINATED BY CARBON STEEL OR IRON CONTACT.
  - MACHINING TO BE IN LINE WITH LIGO SPECIFICATION E0900406, LATEST REVISION.

ITEM NO.	PART NUMBER	DESCRIPTION	QTY.
1	1000-800N	(N-C) FLANGE, CF, 10" OD, NR, THRU HOLES	1
2	114435-00S	TUBE, 10" CF, MC-TUBE PORT	1

MATERIAL: AISI 304/AISI 304L DUAL CERT PER SA240

UNLESS OTHERWISE SPECIFIED: WEIGHT: 14.74 #

DIMENSIONS ARE IN INCHES  
 TOLERANCES: FINISH  
 ANGULAR: ± 0°30' 125  
 .XX ± .01  
 .XXX ± .005  
 UNSPECIFIED FILLETS: R.015  
 BREAK EDGES .010 x 45°  
 REMOVE ALL BURRS

THIRD ANGLE PROJECTION

DO NOT SCALE DRAWING

APPROVALS		
	NAME	DATE
DRAFTER	MKM2	6/11/10
CHECKER	RW	6/14/10
ENGINEER	MKM2	6/11/10

**GNB CORPORATION**  
 SCIENTIFIC AND INDUSTRIAL EQUIPMENT  
 3200 DWIGHT RD, SUITE 100  
 ELK GROVE, CA 95758  
 916-395-3003 FAX: 916-395-3363  
 WWW.GNBVALVES.COM

TITLE: WELDMENT, PORT, 10" CF MC TUBES

DWG. NO. **A** 114260-00WS

SCALE: 1:3

SHEET 1 OF 1

REV C