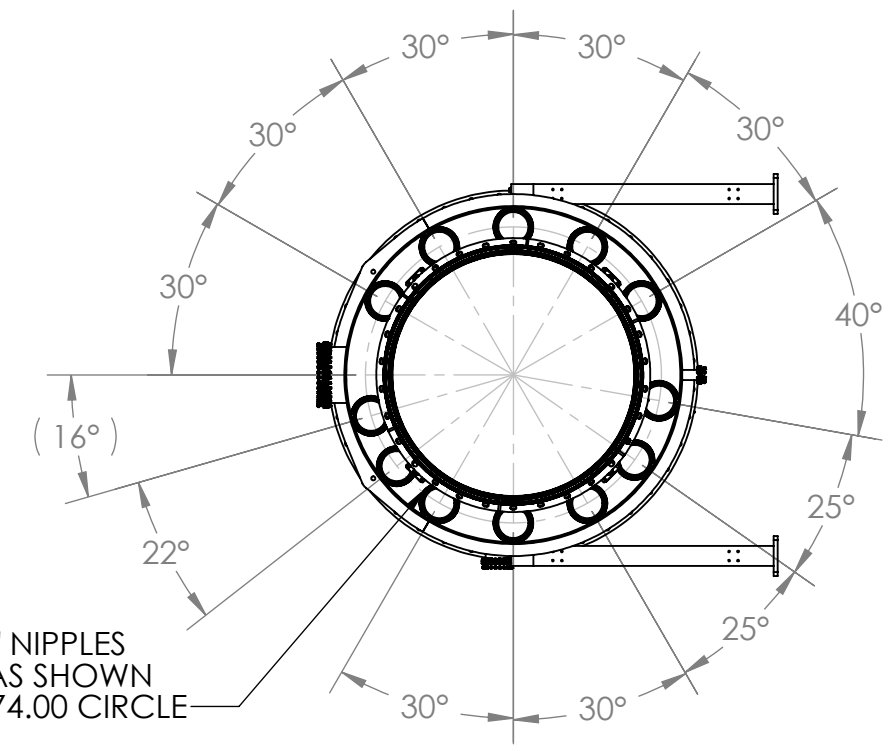
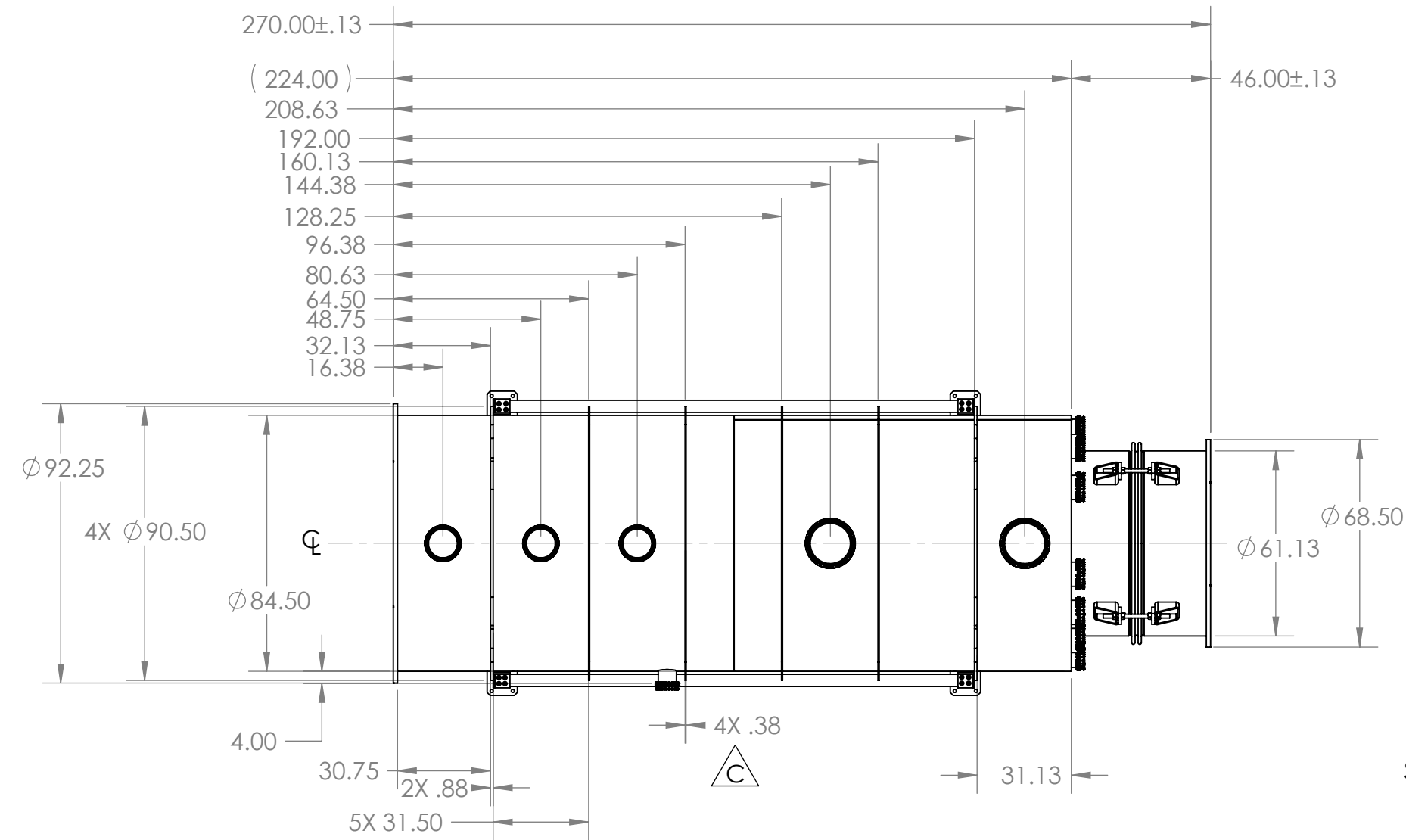
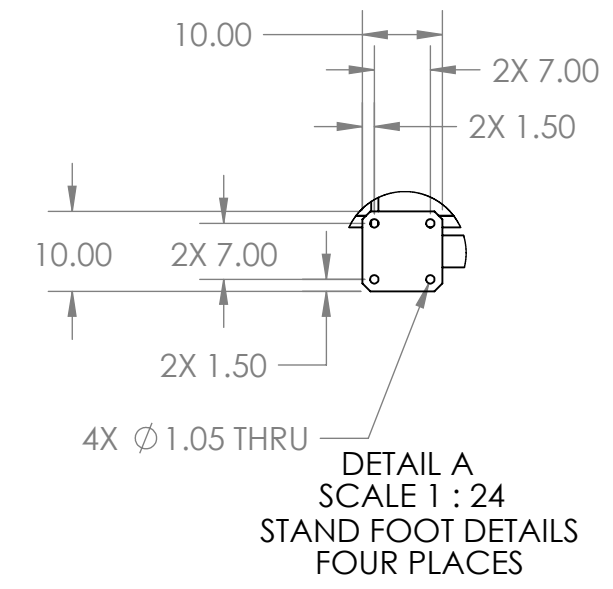
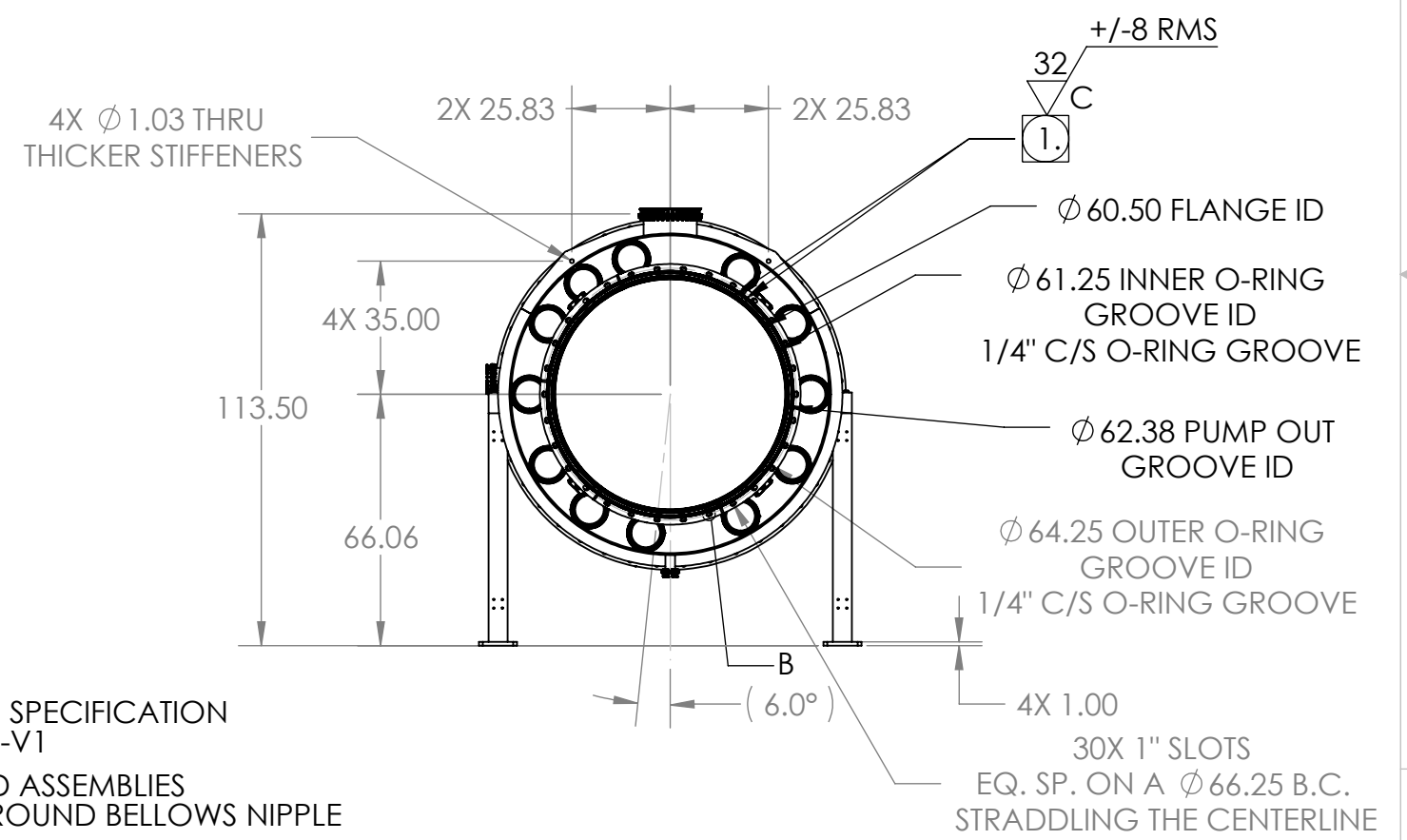
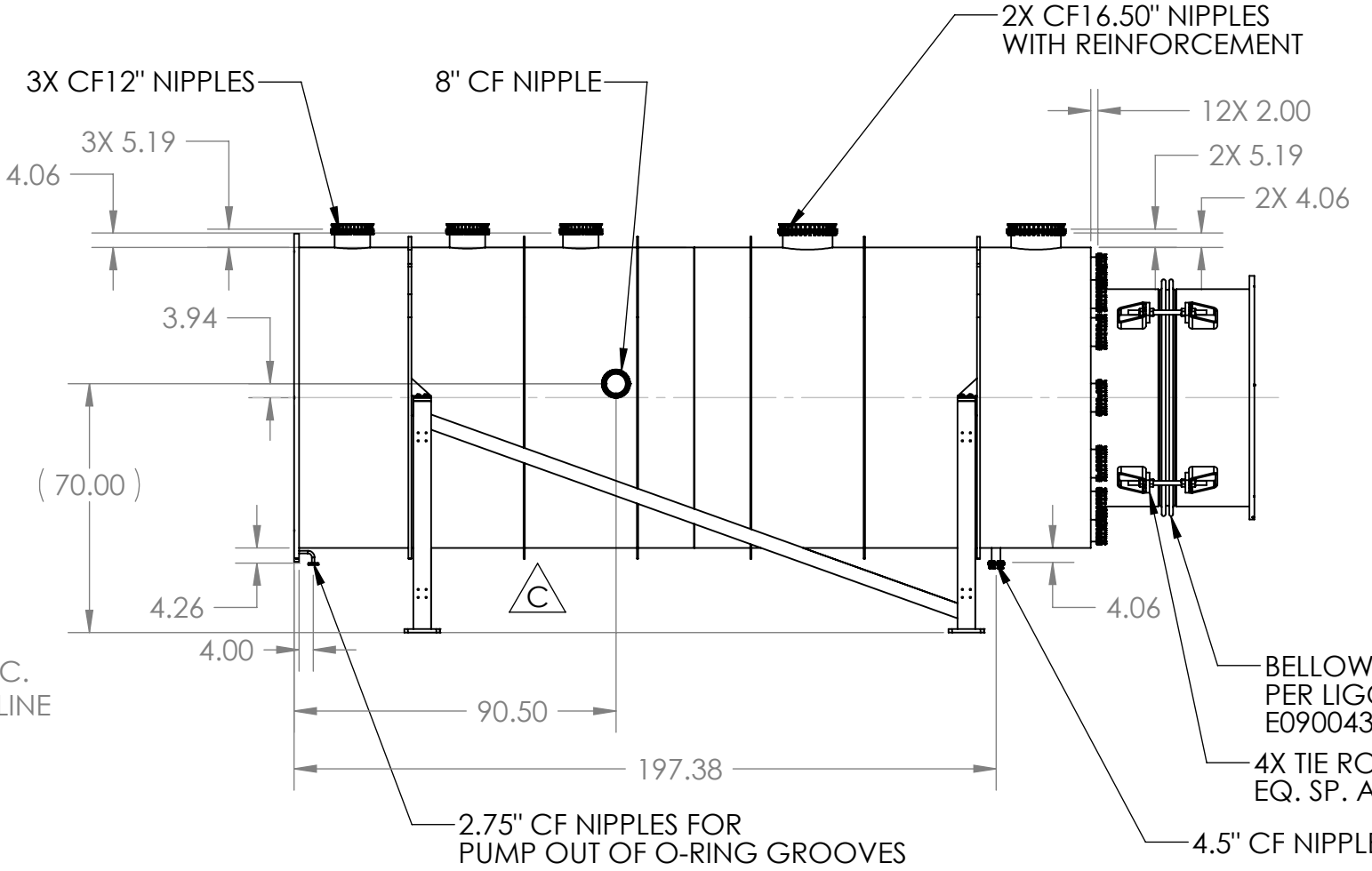
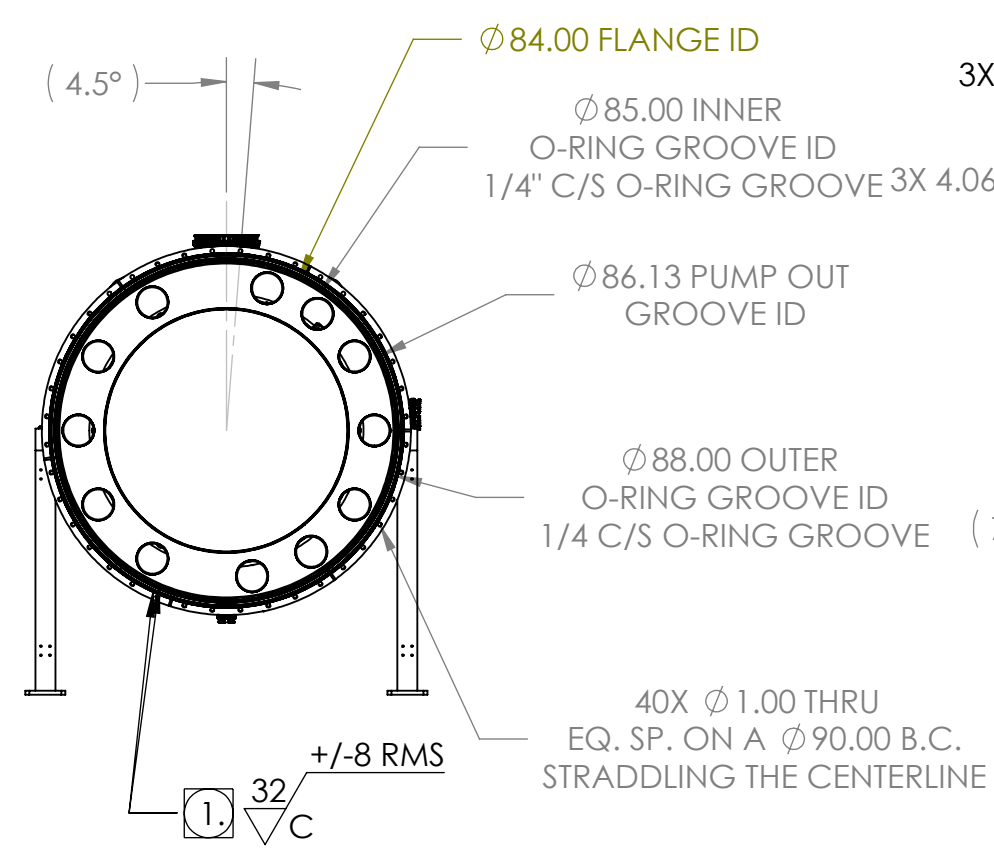


PROPRIETARY AND CONFIDENTIAL
 DRAWING IS THE SOLE PROPERTY OF
 THE GNB CORPORATION. ANY
 REPRODUCTION IN PART OR AS A WHOLE
 WITHOUT THE WRITTEN PERMISSION OF
 THE GNB CORPORATION IS PROHIBITED.

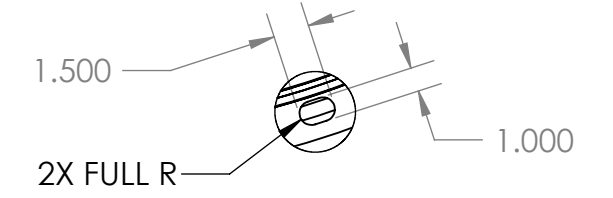
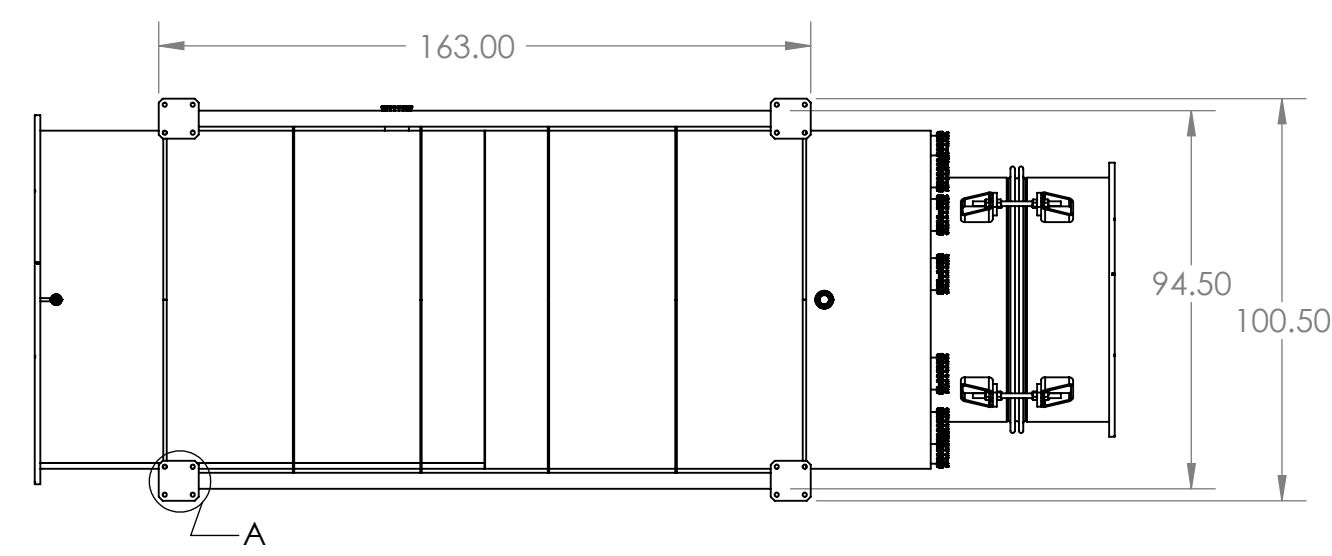
REVISIONS				
ZONE	REV.	DESCRIPTION	DATE	APPROVED
	A	REVISED MODEL TO MATCH CONSTRUCTION MODELS	6/9/10	MKM2
	B	REVISED TITLE BLOCK, GD&T TOLERANCE WAS .010, NOW .03; REMOVED 2.75" OF PUMP OUT PORT	6/24/10	MKM2
	C	ADDED TWO MORE STIFFENERS, REVISED STAND TO MATCH CLARIFIED USE CONDITIONS.	7/2/2010	MKM2
	D	RELEASED TO PRODUCTION	8/24/2010	MKM2



12X CF10" NIPPLES
 SPACED AS SHOWN
 ON A Ø74.00 CIRCLE



DETAIL A
 SCALE 1 : 24
 STAND FOOT DETAILS
 FOUR PLACES



DETAIL B
 SCALE 1 : 8
 1" SLOT DETAIL
 30 PLACES

NOTES:
 1. VACUUM SEALING SURFACE
 2. ALL CONFLAT FLANGES ARE NON-ROTATABLE AND WITH THRU HOLES.

MATERIAL: AISI 304/ AISI 304L DUAL CERT PER SA240
 WEIGHT: 8988.37#

UNLESS OTHERWISE SPECIFIED: DIMENSIONS ARE IN INCHES TOLERANCES: FINISH	APPROVALS	DATE
ANGULAR: ± 1°	DRAFTER	6/9/10
.XX ± .06	CHECKER	6/15/10
.XXX ± .005	ENGINEER	6/9/10
UNSPECIFIED FILLETS: R.015		
BREAK EDGES .010x45°		
REMOVE ALL BURRS		
// □ ⊥ WITHIN .03		

THIRD ANGLE PROJECTION

GNB CORPORATION
 SCIENTIFIC AND INDUSTRIAL EQUIPMENT
 3200 DWIGHT RD. SUITE 100
 ELK GROVE, CA 95758
 916-395-3003 FAX: 916-395-3363
 www.gnbvalves.com

TITLE:
 OUTLINE, TUBE, MC-B #3
 WAMCB3

DO NOT SCALE DRAWING	DWG. NO.	REV
SCALE: 1:48	114146-02	D
	SHEET 1 OF 1	