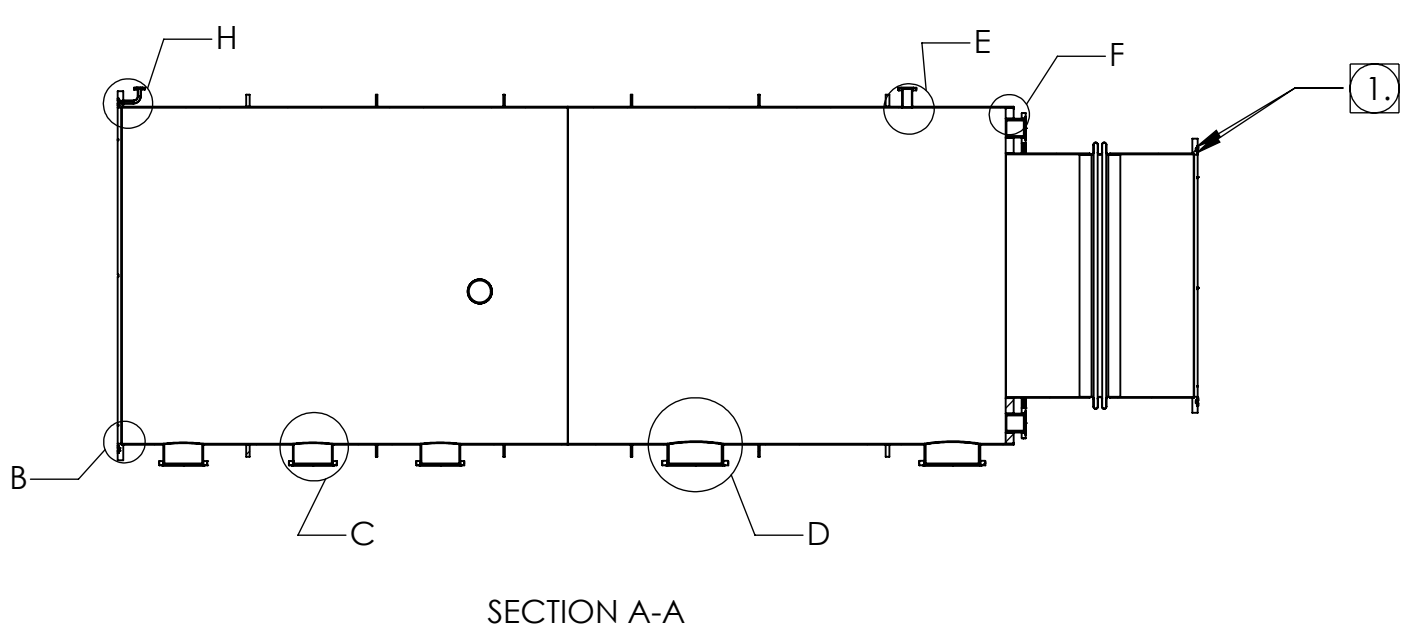
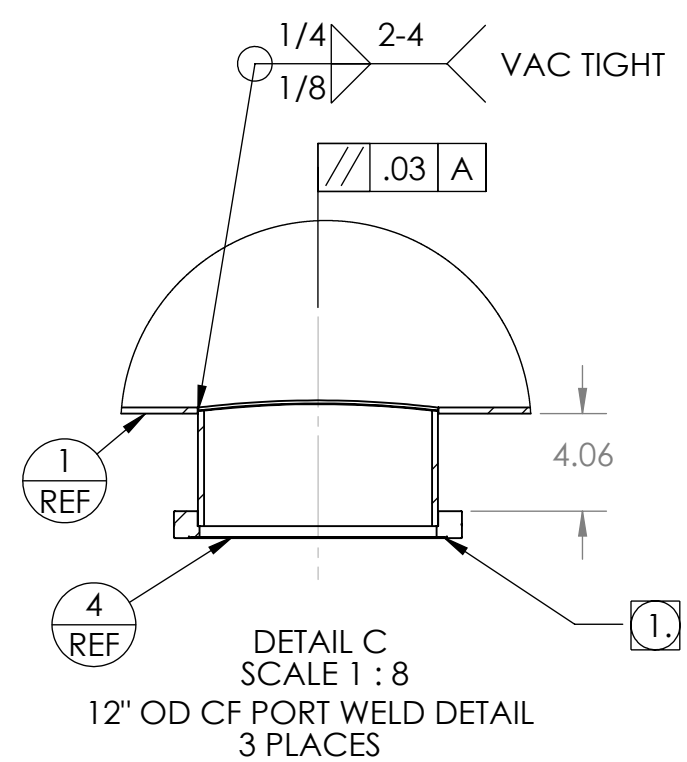
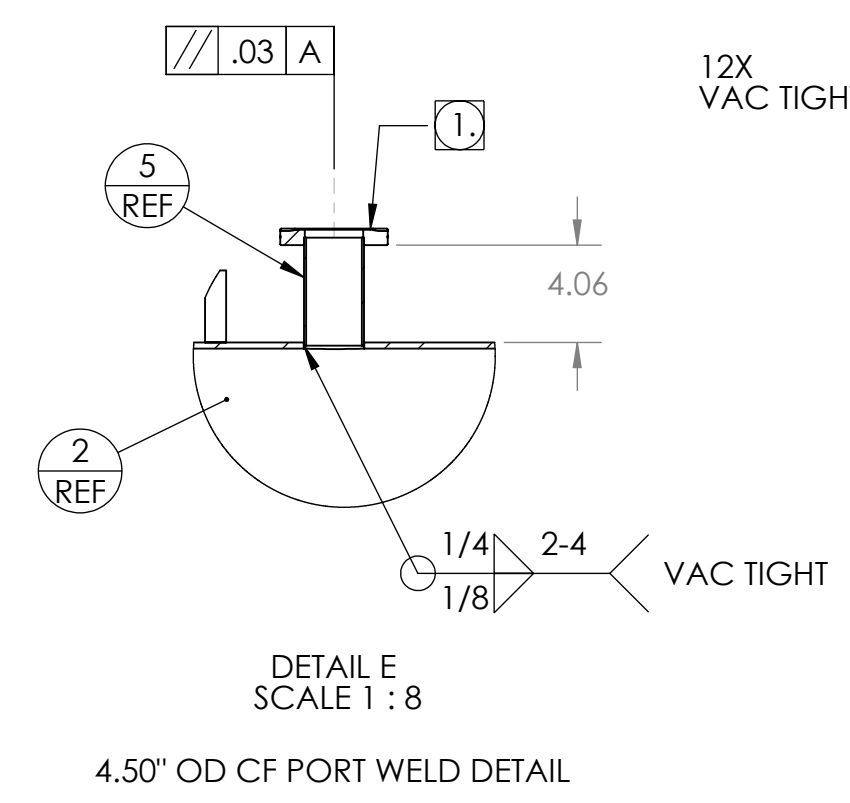
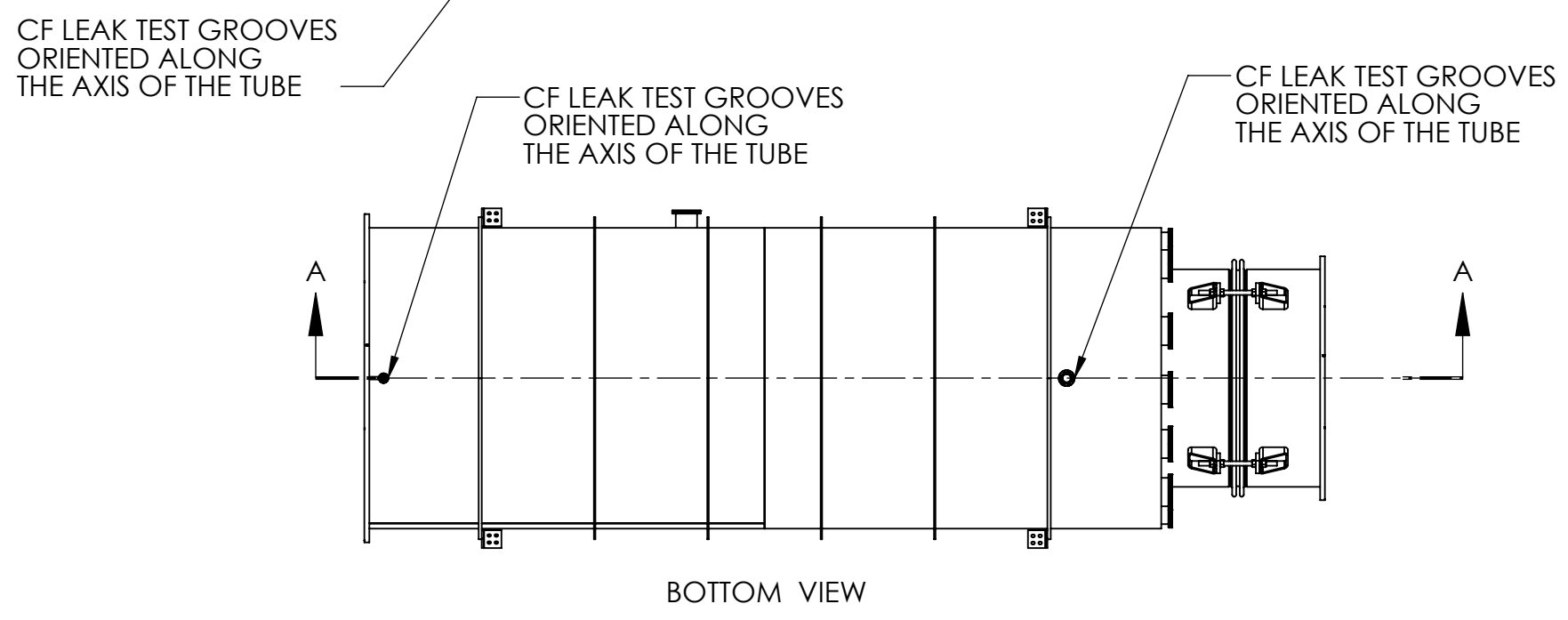
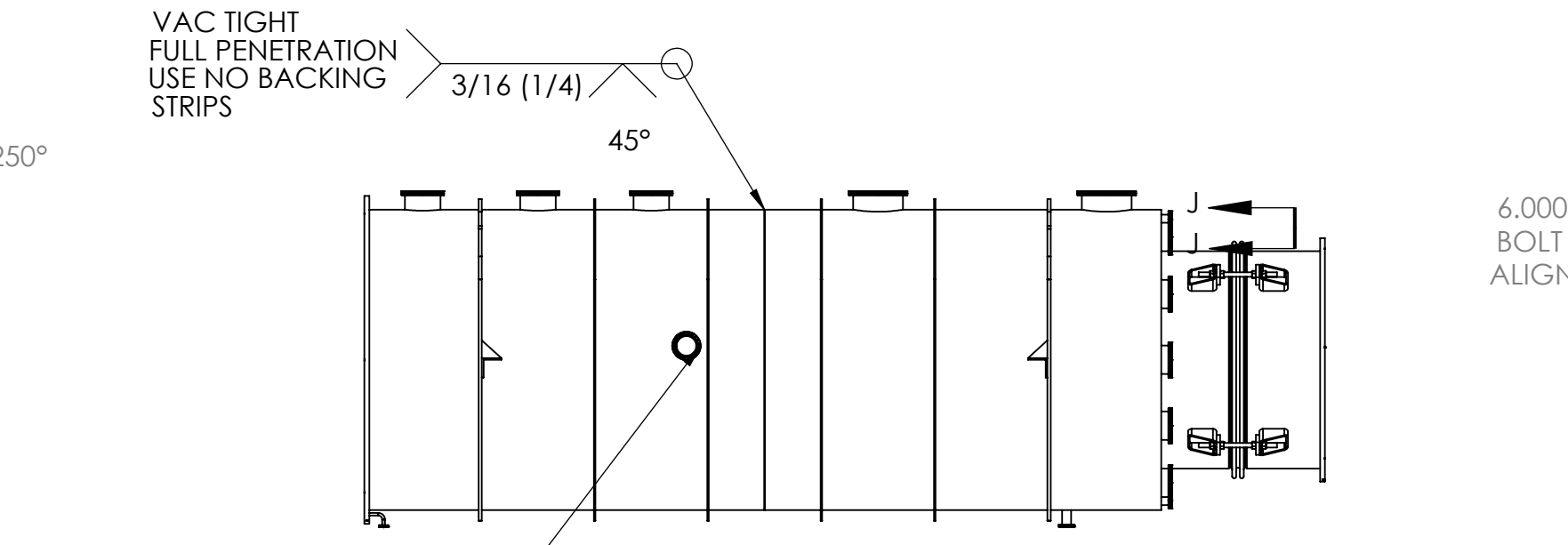
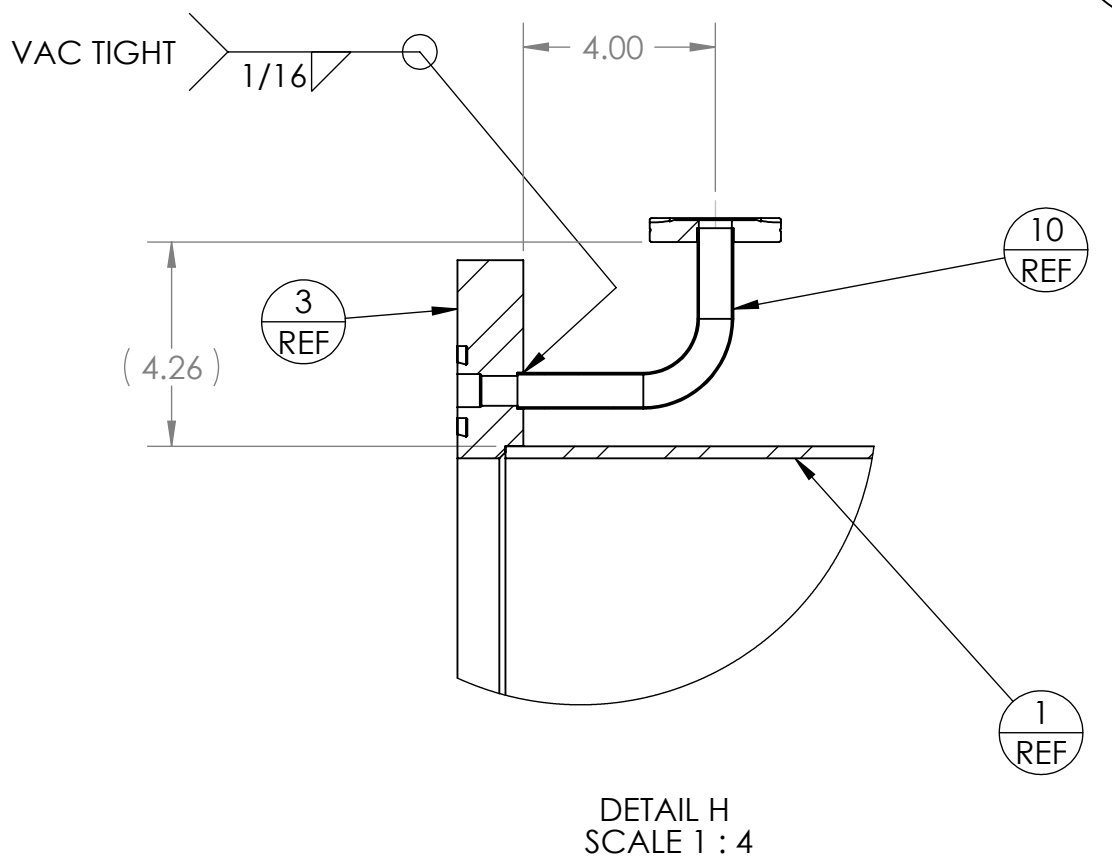
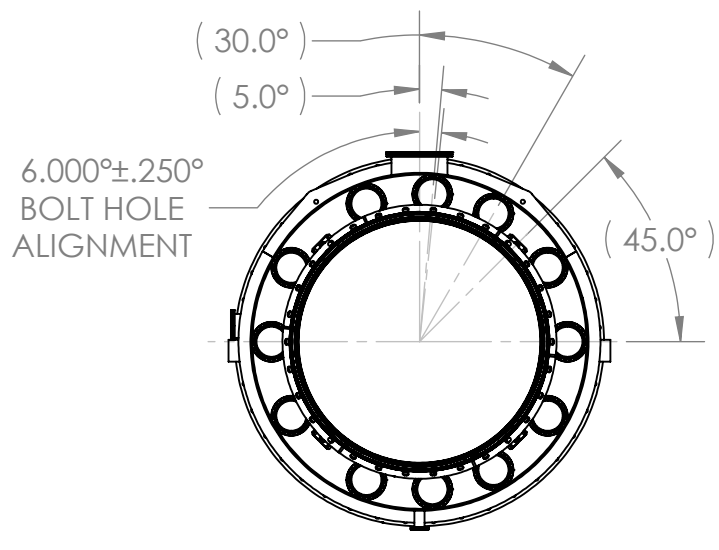
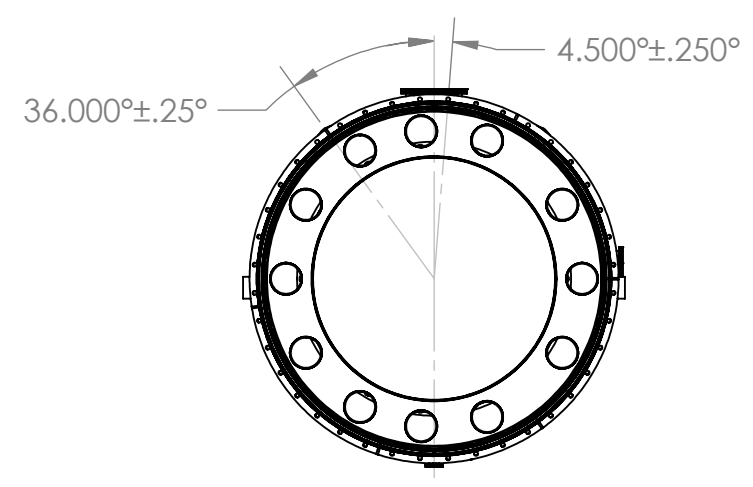
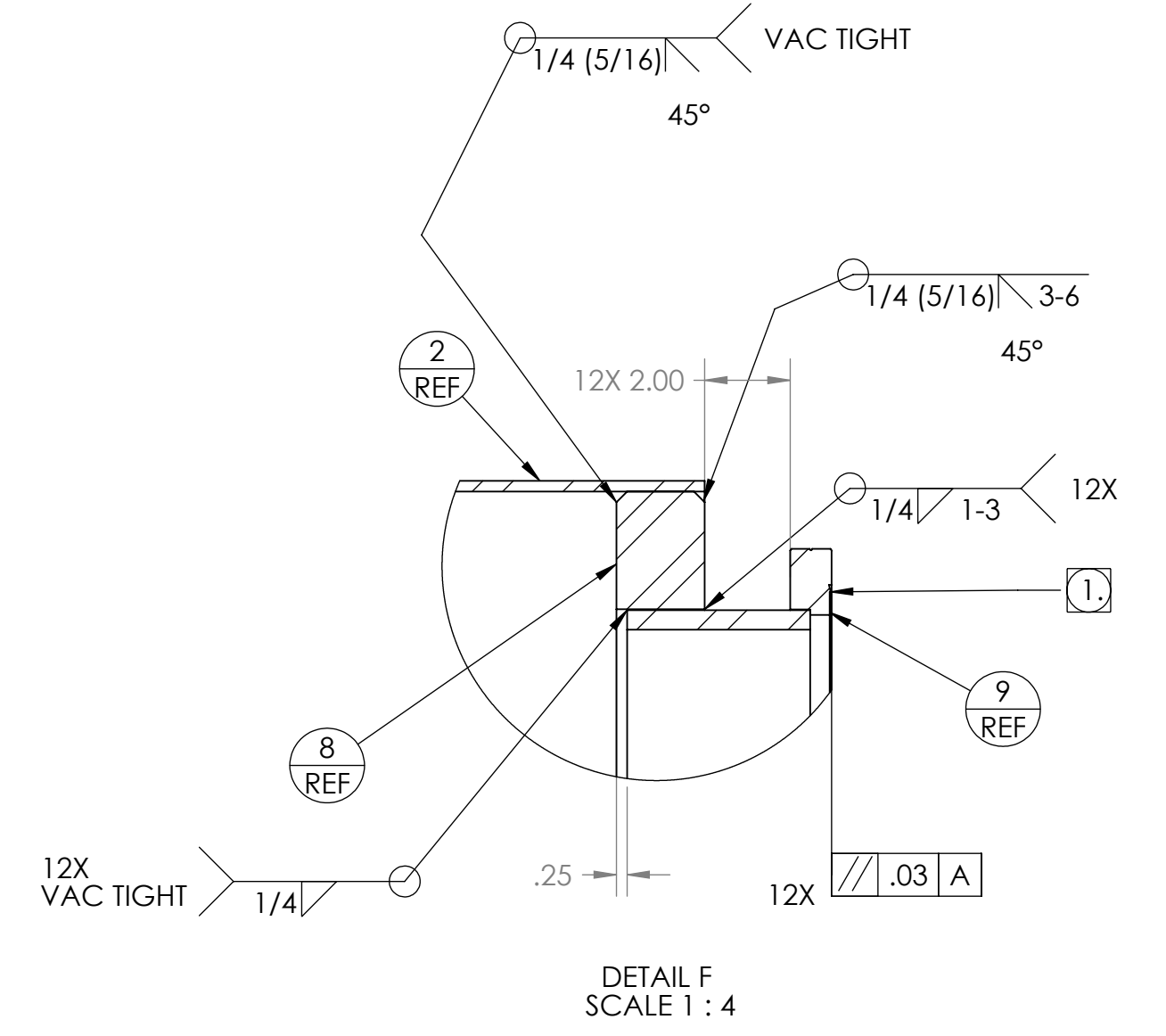
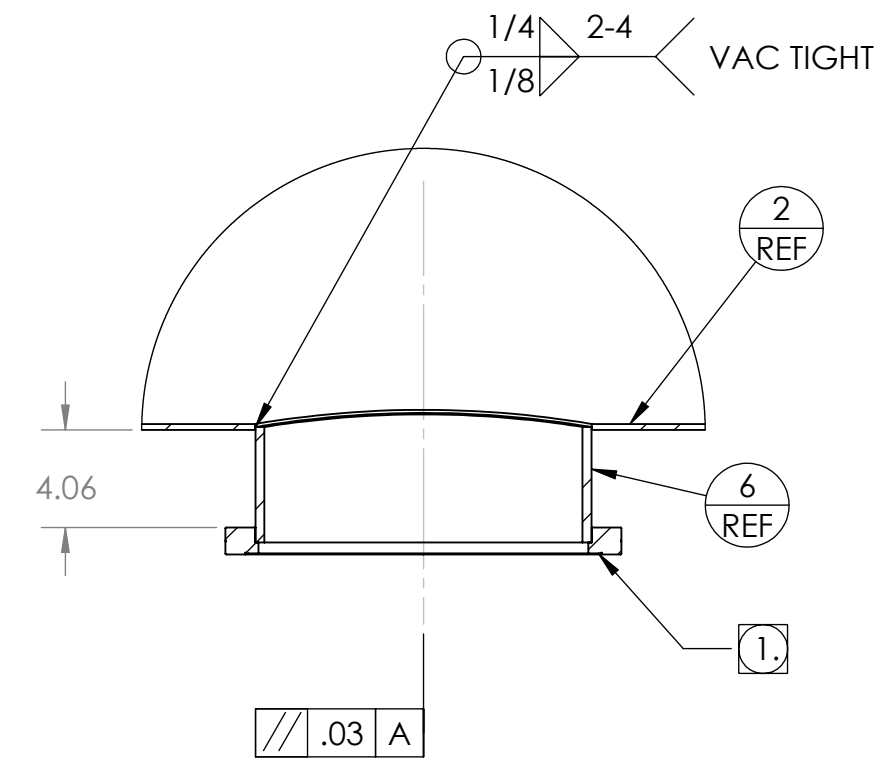
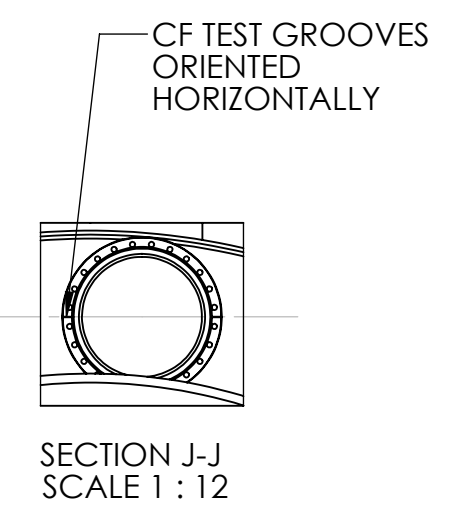
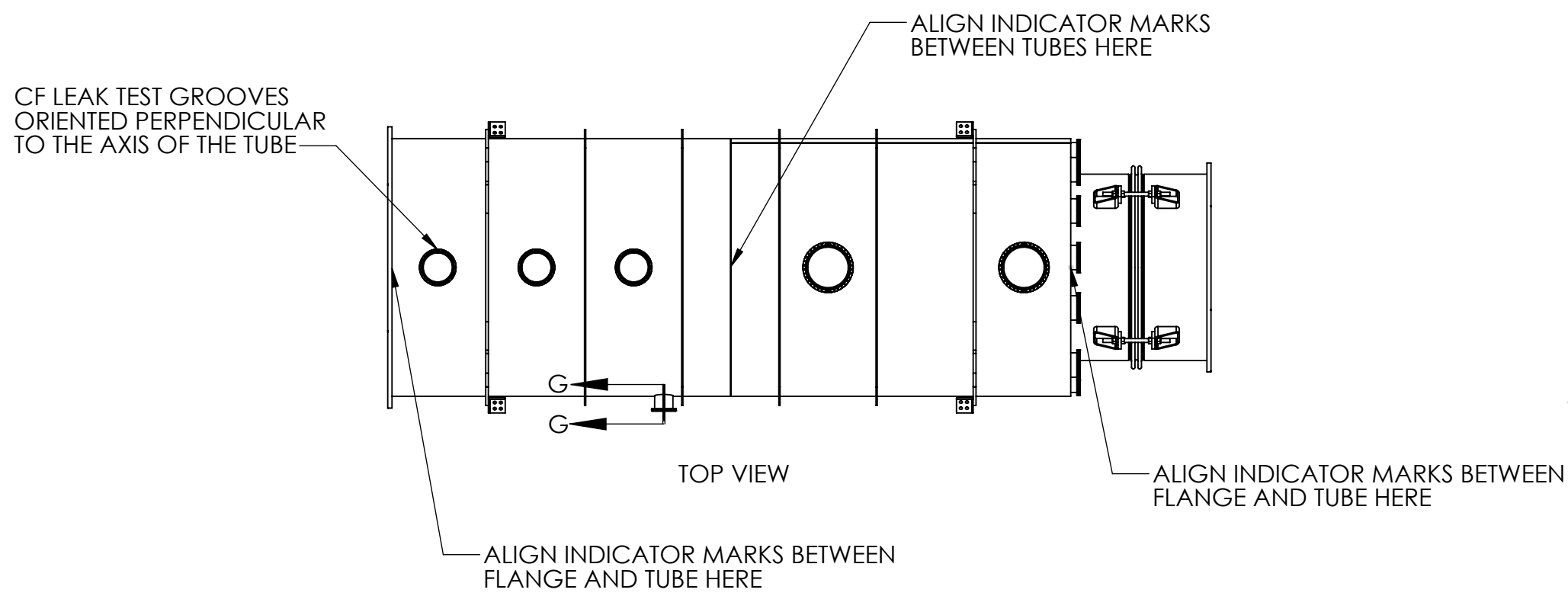
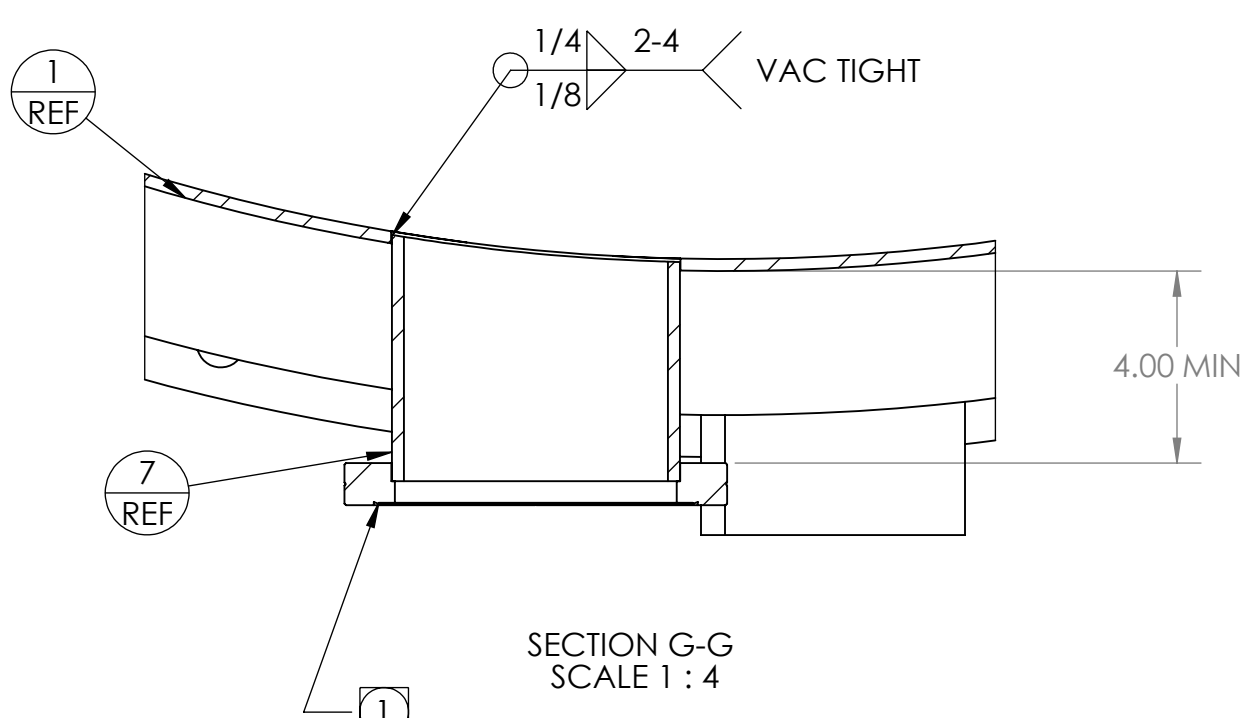
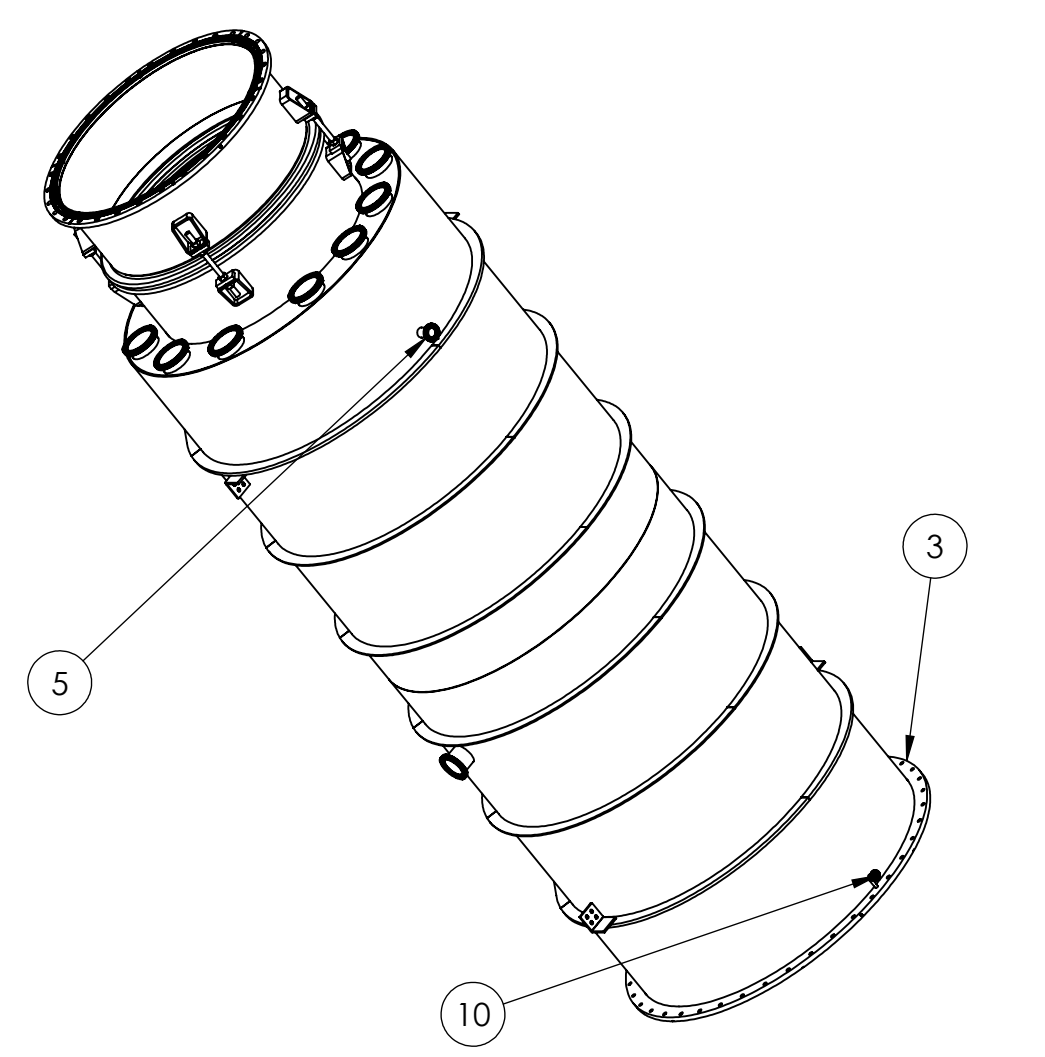
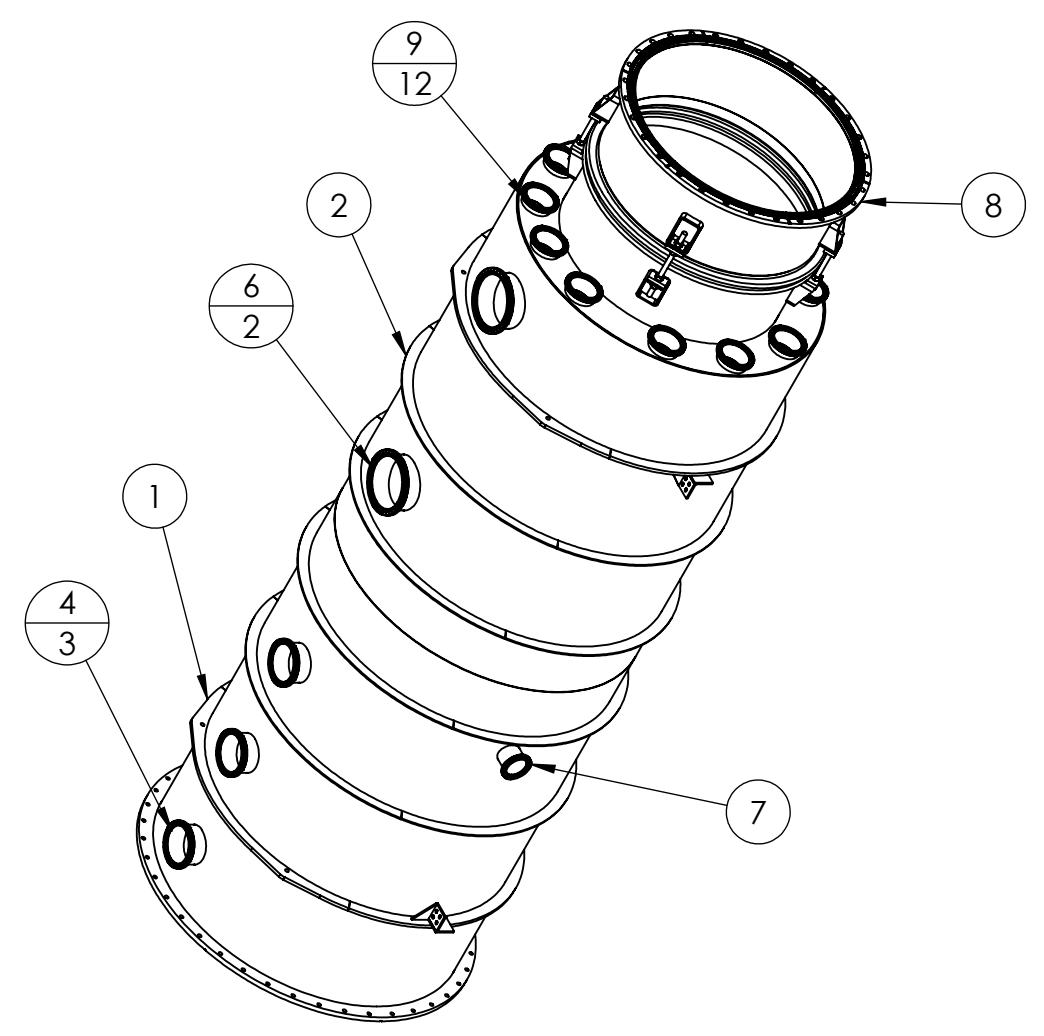
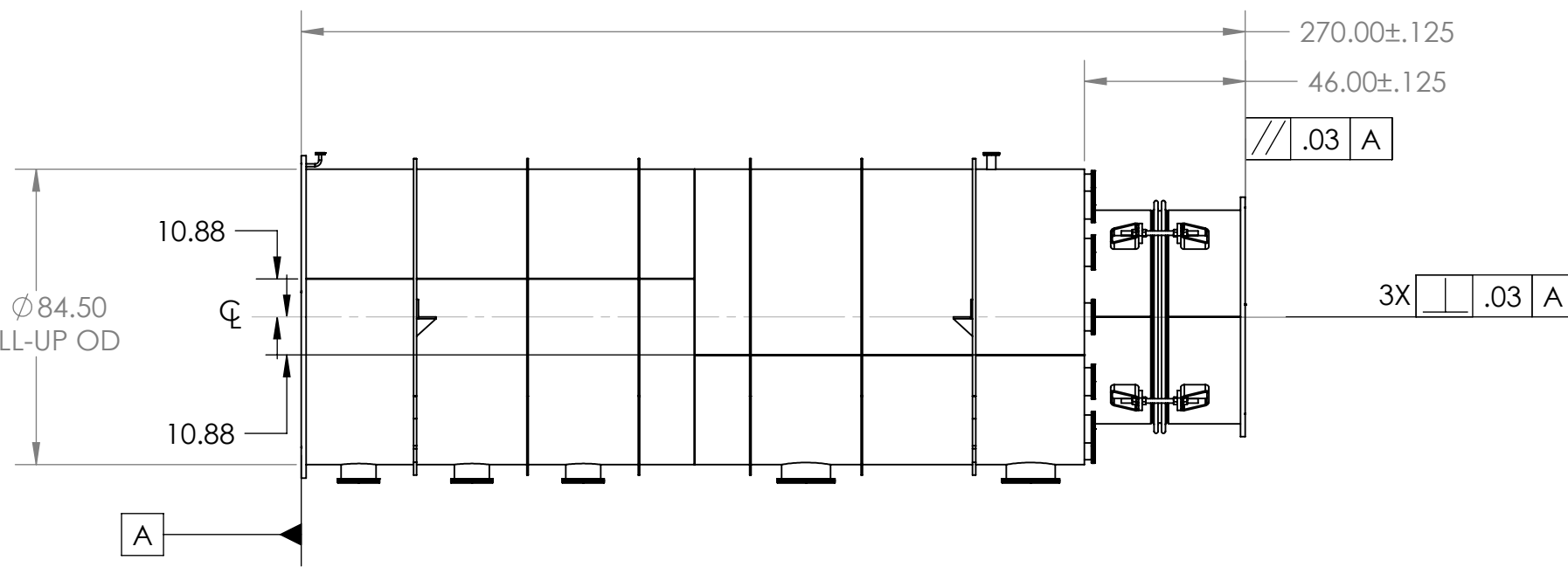
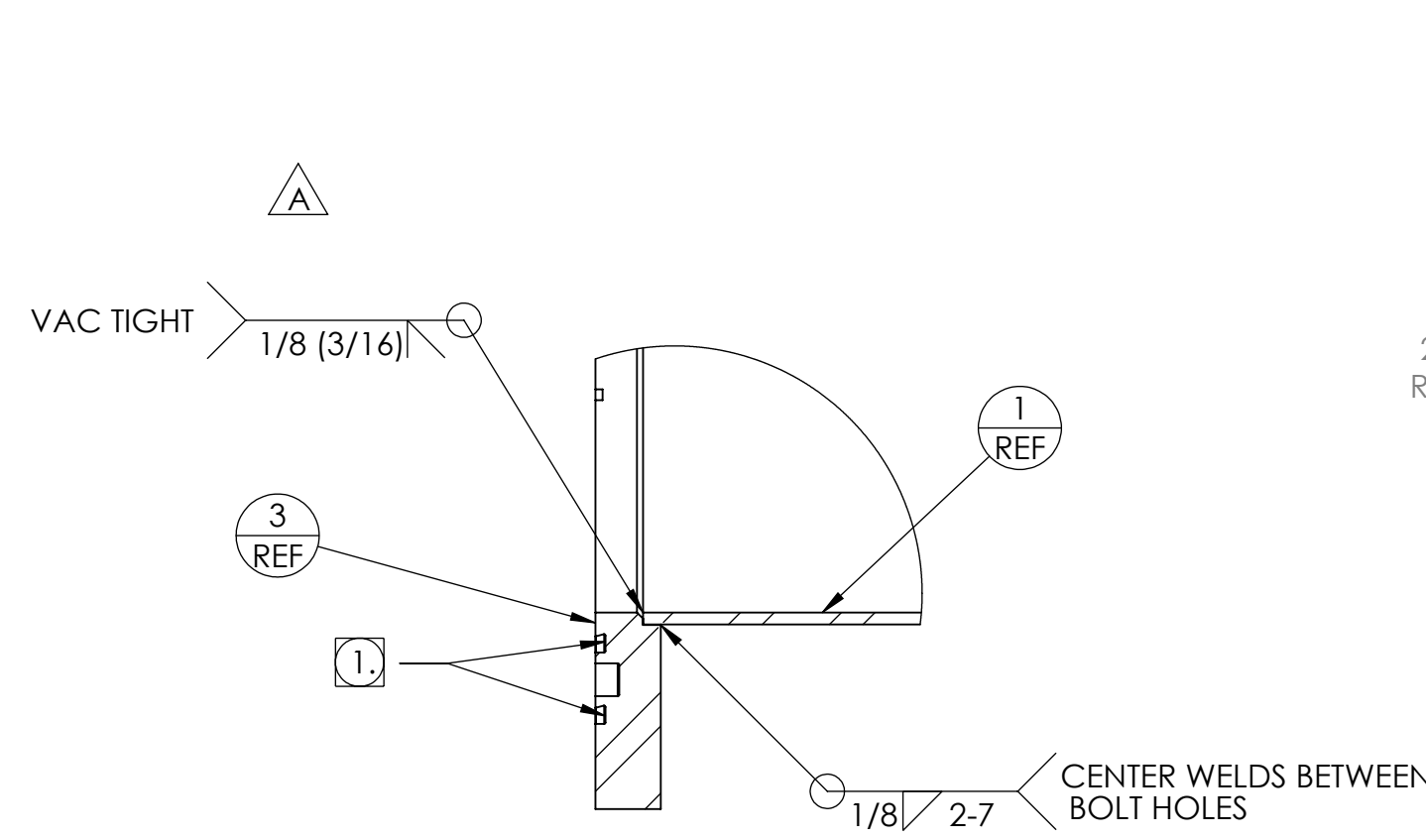


PROPRIETARY AND CONFIDENTIAL  
 THE INFORMATION CONTAINED HEREIN IS THE PROPERTY OF GNB CORPORATION AND IS TO BE KEPT CONFIDENTIAL AND NOT RELEASED TO THE PUBLIC WITHOUT THE WRITTEN PERMISSION OF GNB CORPORATION.

ZONE		REV.	DESCRIPTION	DATE	APPROVED
A			REVISED WELD SIGNS.	8/11/2010	MKM2
B			RELEASED TO PRODUCTION	8/25/2010	MKM2



- NOTES:
- VACUUM SEALING SURFACE
  - CLEAN ALL WELD WIRE AND SURFACES WITH CO2 SCRUBBING PRIOR TO WELDING.
  - ALL WELDS TO BE SMOOTH BUT NO GRINDING IS ALLOWED.
  - ALL WELDS TO BE GTAW.
  - ALL WELD PREPARATION TO BE DONE BY TUNGSTON CARBIDE TOOLING IF NEEDED.
  - ALL WELDING TO BE IN ACCORDANCE WITH QP1750-W2, LIGO WELDING AND REPAIR PROCEDURE.
  - AFTER WELDING, COMPLETE COMPONENT TO BE CLEANED PER QP1730-10.
  - COMPONENT TO BE FREE FROM CONTAMINATION PER QP1730-10, CONTAMINATION CONTROL PLAN.
  - COMPONENT CLEANLINESS TO BE TESTED PER QP1750-A3, LIGO CLEANLINESS TESTING.

ITEM NO.	PART NUMBER	DESCRIPTION	QTY.
1	114201-00S	TUBE, LEFT, MCB TUBE	1
2	114210-00S	TUBE, RIGHT, MCB TUBE	1
3	114212-00S	FLANGE, 84\"/>	

MATERIAL: AISI 304/ AISI 304L DUAL CERT PER SA240  
 UNLESS OTHERWISE SPECIFIED: WEIGHT: 8016.43 #  
 DIMENSIONS ARE IN INCHES

APPROVALS: DATE: 7/9/10  
 DRAFTER: MKM2  
 CHECKER: RW 7/22/10  
 ENGINEER: MKM2 7/9/10

**GNB CORPORATION**  
 SCIENTIFIC AND INDUSTRIAL EQUIPMENT  
 3200 DWIGHT RD. SUITE #100  
 ELK GROVE, CA 95758  
 916-395-3003 FAX: 916-395-3363  
 www.gnbvalves.com

**FINAL WELDMENT, MCB TUBE**  
 WAMCB#1, LAMCB#1

DO NOT SCALE DRAWING  
 DWG. NO. 114200-00WS  
 SCALE: 1:48 SHEET 1 OF 1

REV B