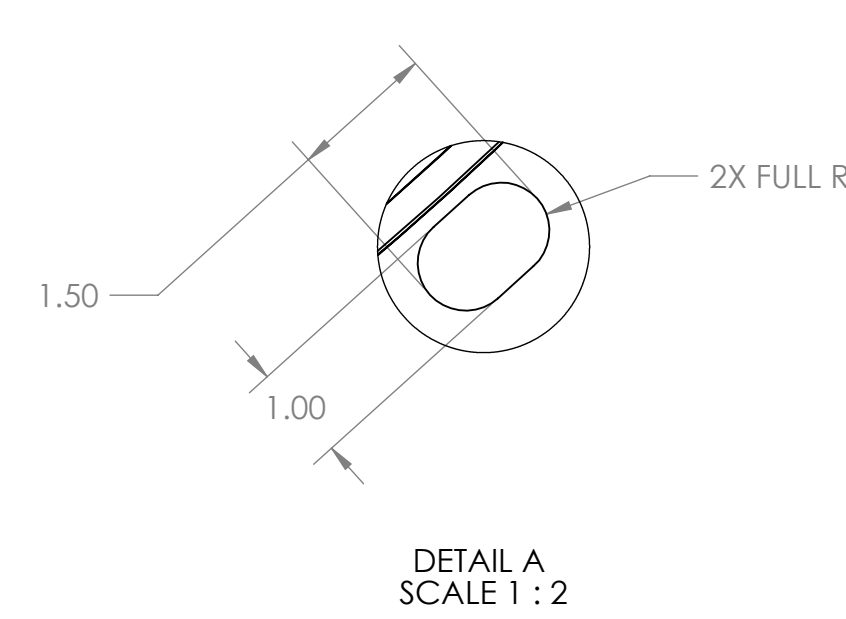
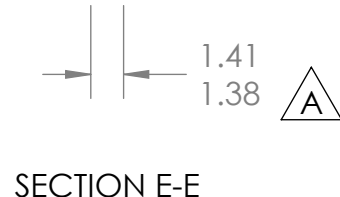
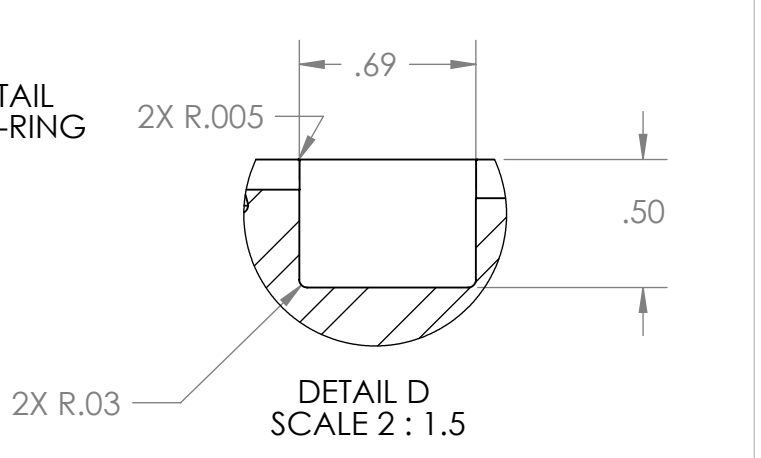
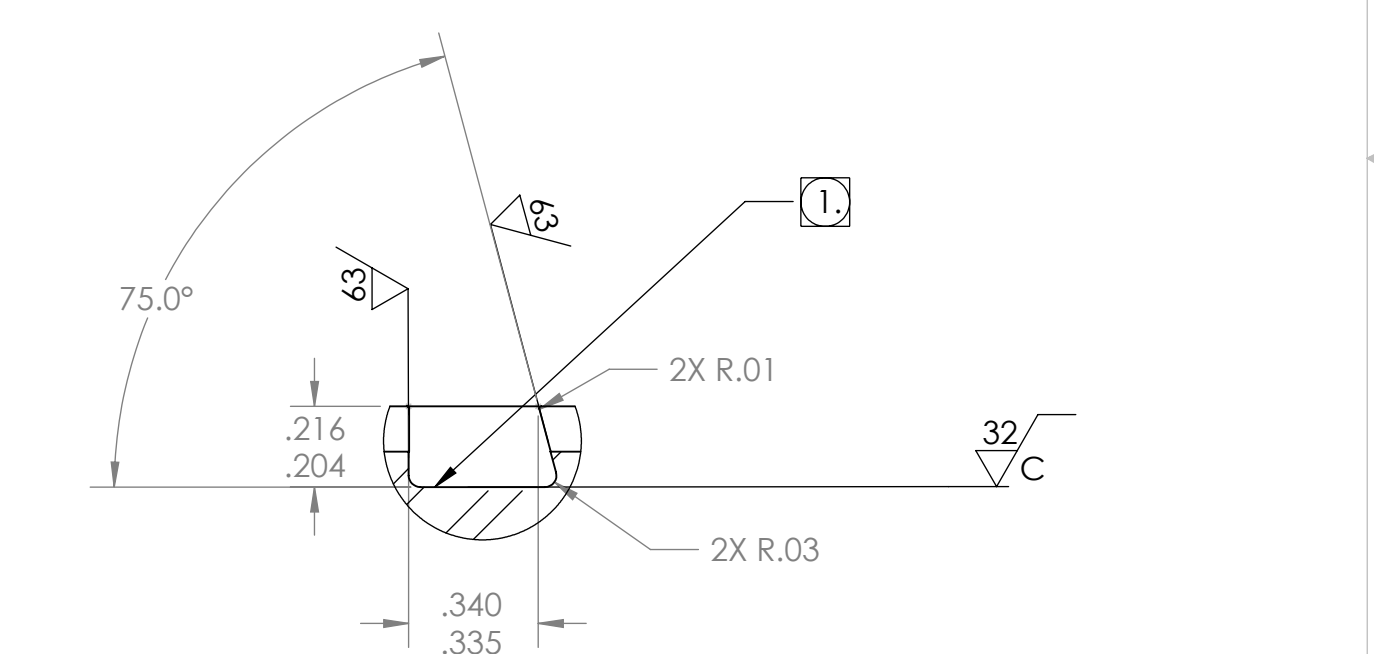
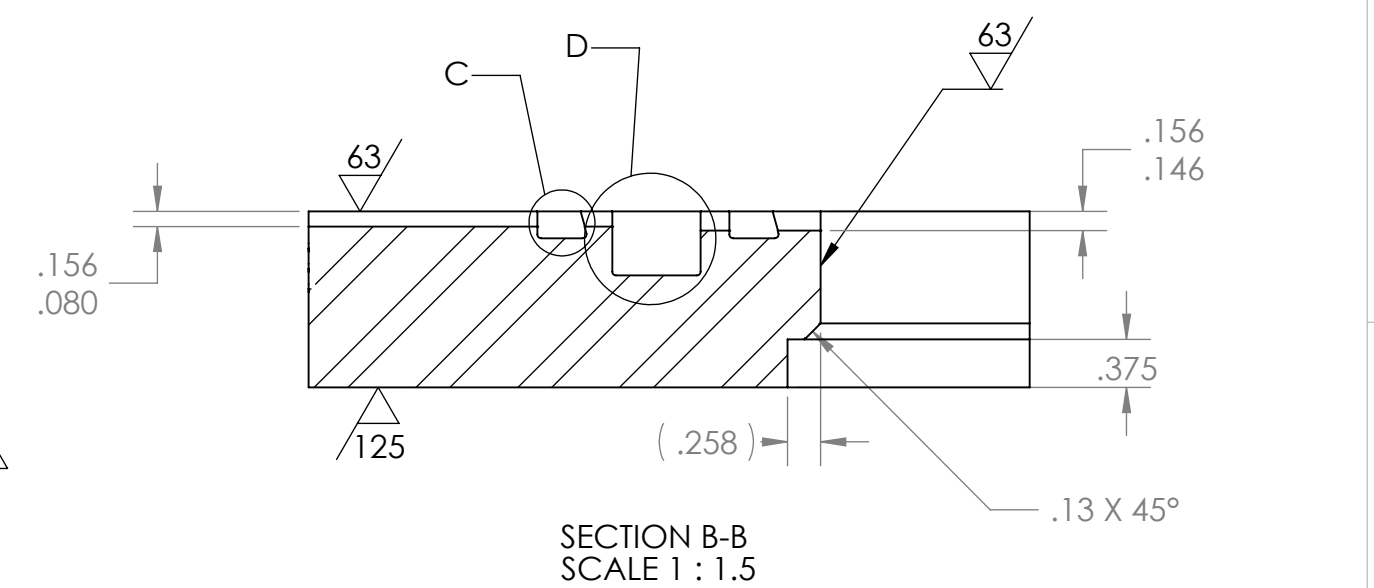
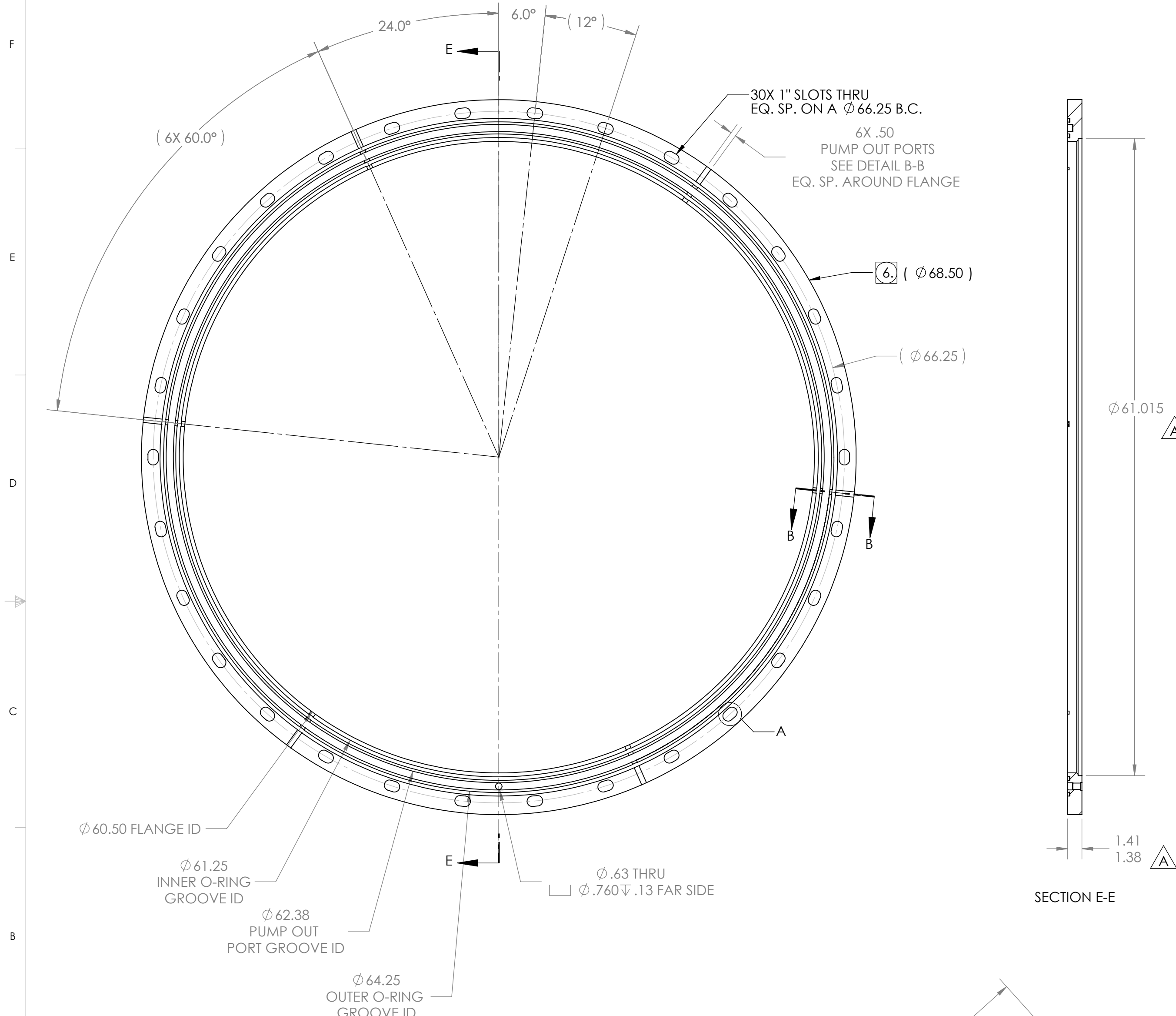


PROPRIETARY AND CONFIDENTIAL
 DRAWING IS THE SOLE PROPERTY OF
 THE GNB CORPORATION. ANY
 REPRODUCTION IN PART OR AS A WHOLE
 WITHOUT THE WRITTEN PERMISSION OF
 THE GNB CORPORATION IS PROHIBITED.

REVISIONS				
ZONE	REV.	DESCRIPTION	DATE	APPROVED
	A	ADDED THICKNESS CALLOUT, 61.015 WAS 61.09, .760 WAS .76; RELEASED TO PRODUCTION	8/23/2010	MKM2



- NOTES:
- VACUUM SEALING SURFACE
 - THE FOLLOWING ARE NOT ALLOWED: GRINDING, HONING, LAPPING, POLISHING, BUFFING, SANDING, BLASTING.
 - NO HYDROCARBONS ALLOWED IN THE COOLANT. COOLANT LIMITS AS FOLLOWS
 - WATER LEACHABLE CHLORIDES: 100PPM
 - TOTAL HALOGENS (INCLUDING CHLORIDES): 1000PPM
 - TOTAL SULFUR: 1000PPM
 - DO NOT ALLOW PART TO BE CONTAMINATED BY CARBON STEEL OR IRON CONTACT.
 - MACHINING TO BE IN LINE WITH LIGO SPECIFICATION E0900406, LATEST REVISION.
 - DO NOT MACHINE OD OF FORGING; FORGING MANUFACTURER'S NUMBERS TO REMAIN INTACT

ITEM NO.	PART NUMBER	DESCRIPTION	QTY.
1	114269-00S	FORGING, FLANGE, MIDSTATION	1

MATERIAL: AISI 304L PER ASME SPEC SA-182 GRADE F, MAX SULFUR CONTENT .006%

UNLESS OTHERWISE SPECIFIED:
 DIMENSIONS ARE IN INCHES
 TOLERANCES: FINISH
 ANGULAR: $\pm 0^{\circ}30'$ 125
 .XX $\pm .03$
 .XXX $\pm .005$
 UNSPECIFIED FILLETS: R.015
 BREAK EDGES .010x45°
 REMOVE ALL BURRS

WEIGHT: 272.19#

APPROVALS: DATE
 DRAFTER MKM2 7/2/10
 CHECKER RW 7/9/10
 ENGINEER MKM2 7/2/10

GNB CORPORATION
 SCIENTIFIC AND INDUSTRIAL EQUIPMENT
 3200 DWIGHT RD. SUITE 100
 ELK GROVE, CA 95758
 916-395-3003 FAX: 916-395-3363
 www.gnbvalves.com

TITLE: FLANGE, MIDSTATION POOL

THIRD ANGLE PROJECTION

DO NOT SCALE DRAWING

C DWG. NO. 114268-00S REV A
 SCALE: 1:8 SHEET 1 OF 1