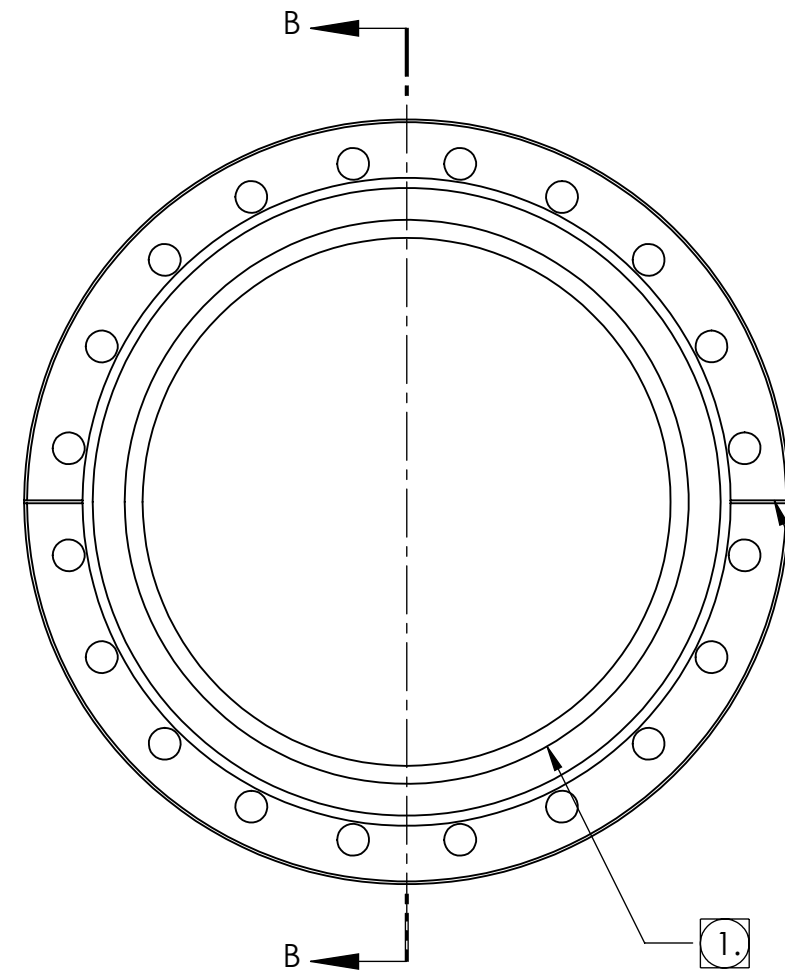
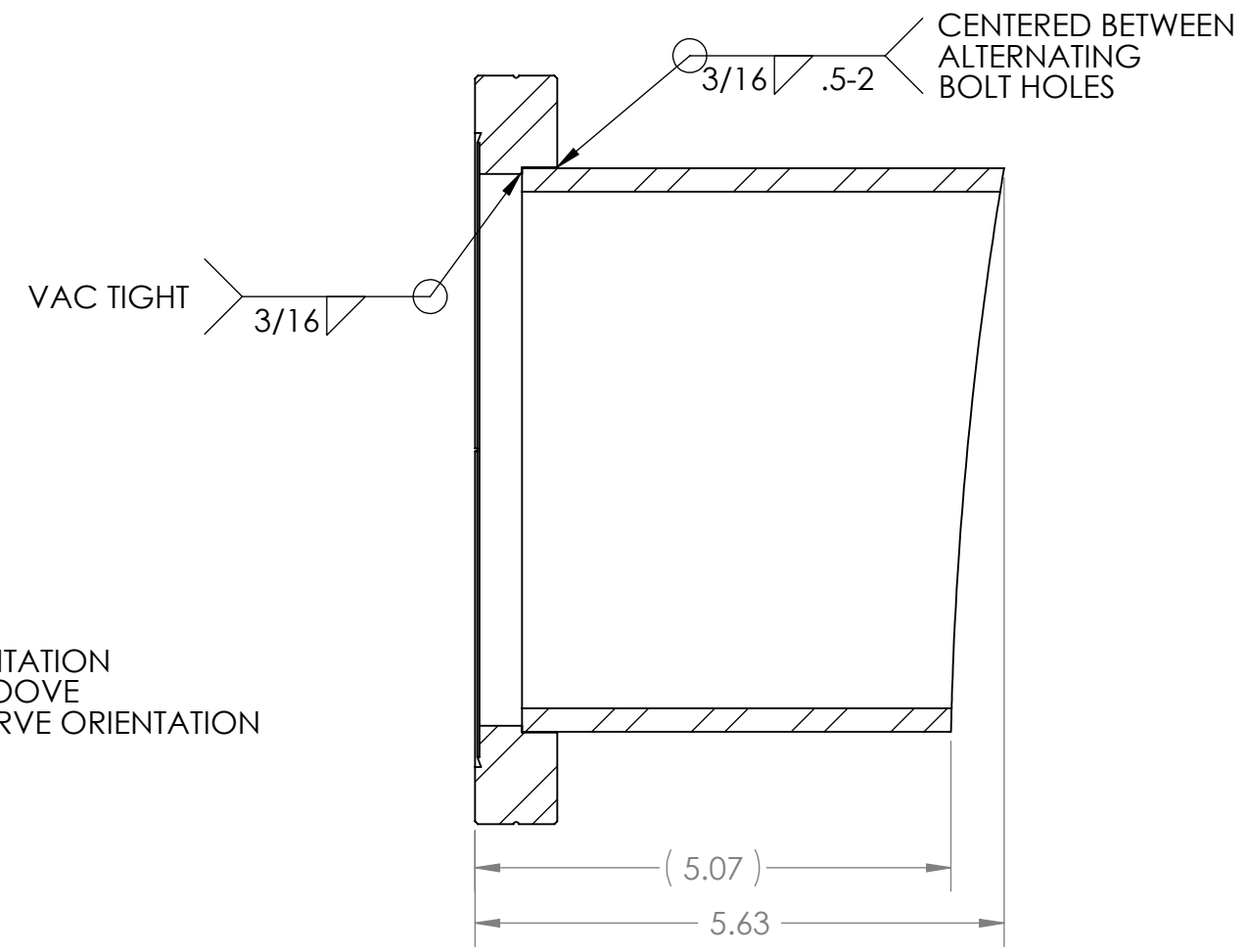


PROPRIETARY AND CONFIDENTIAL  
 THE INFORMATION CONTAINED IN THIS  
 DRAWING IS THE SOLE PROPERTY OF  
 GNB CORPORATION. ANY  
 REPRODUCTION IN PART OR AS A WHOLE  
 WITHOUT THE WRITTEN PERMISSION OF  
 GNB CORPORATION IS PROHIBITED.

REVISIONS				
ZONE	REV.	DESCRIPTION	DATE	APPROVED



NOTE ORIENTATION  
 OF TEST GROOVE  
 TO TUBE CURVE ORIENTATION



SECTION B-B

ITEM NO.	PART NUMBER	DESCRIPTION	QTY.
1	800-600N	(NORCAL) FLANGE, CF, 8" OD, THRU HOLE, NR	1
2	114432-00S	TUBE, 8" CF PORT, MCB TUBE	1

NOTES:

- ① VACUUM SEALING SURFACE
- 2. ALL WELD PREPS TO BE DONE BY TUNGSTEN CARBIDE CUTTING TOOLS ONLY
- 3. WELD PER QP1750-W2, LIGO WELDING AND REPAIR PROCEDURE, LATEST REVISION
- 4. CLEAN WELD WIRE AND SURFACES TO BE WELDED WITH CO2 SCRUBBING
- 5. INTERNAL WELD SURFACE TO BE SMOOTH BUT NOT GROUND
- 6. ALL WELDS TO BE GTAW UNLESS OTHERWISE NOTED
- 7. ALL INTERNAL WELDS TO BE CONTINUOUS AND VACUUM TIGHT
- 8. NO POST WELD HEAT TREATMENT IS REQUIRED

MATERIAL: AISI 304/AISI 304L DUAL CERT PER SA 240

UNLESS OTHERWISE SPECIFIED:  
 DIMENSIONS ARE IN INCHES  
 TOLERANCES: FINISH 125  
 ANGULAR: ± 1°  
 .XX ± .03  
 .XXX ± .005  
 UNSPECIFIED FILLETS: R.015  
 BREAK EDGES .010x45°  
 REMOVE ALL BURRS

WEIGHT: 11.29#

APPROVALS	DATE
DRAFTER MKM2	7/23/10
CHECKER RW	7/22/10
ENGINEER MKM2	7/23/10

THIRD ANGLE PROJECTION

DO NOT SCALE DRAWING

**B** DWG. NO. 114340-00WS  
 SCALE: 1:2 SHEET 1 OF 1

GNB CORPORATION  
 SCIENTIFIC AND INDUSTRIAL EQUIPMENT  
 3200 DWIGHT RD. SUITE 100  
 ELK GROVE, CA, 95758  
 916-395-3003 FAX: 916-395-3363  
 www.gnbvalves.com

TITLE: PORT, 8" CF, 5.5 LG