
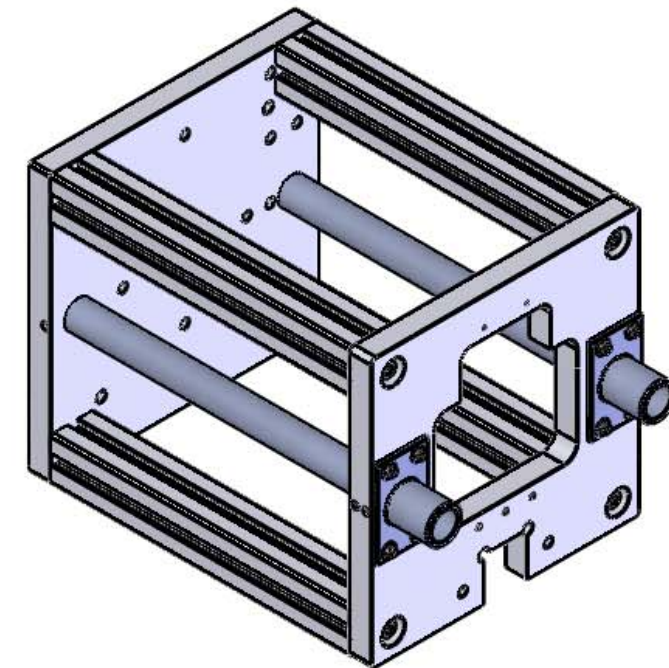
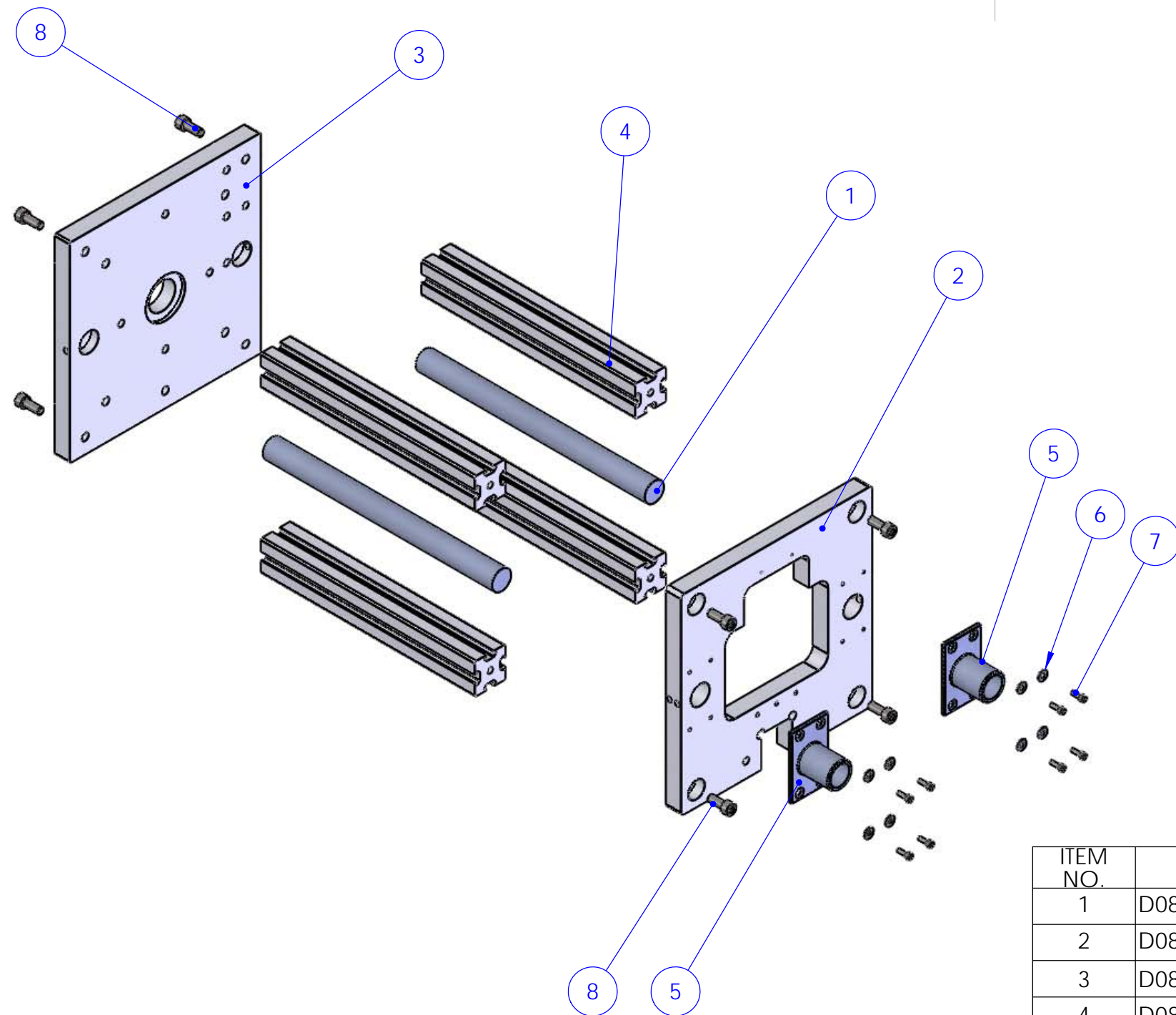



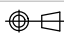
SECTION A-A

| | | | |
|--|-------------|---|---|
| NOTES (UNLESS OTHERWISE SPECIFIED): | | DO NOT SCALE DRAWING | A3 |
| DIMENSIONS ARE IN MILLIMETERS | |  Institute for Gravitational Research University of Glasgow GEO 600 Group | SYSTEM: IGR_MKII Strength Testing Machine SUB-SYSTEM: -- |
| GENERAL TOLERANCES: 0<X<50mm: ±0.1mm 50<X<150mm: ±0.2mm 100<X<1000mm: ±0.3mm 1000>: ±0.5mm ANGULAR: ±0.2° | | | |
| 1. DEBUR AND BREAK SHARP EDGES | | QUANTITY: MATERIAL: *-* SURFACE TEXTURE (µm): ✓ UNLESS STATED FINISH: | DWG NO. D080198 REV: 00 |
| DRAWN | NAME | DATE | SCALE:1:5 PROJECTION: (3rd ANGLE) |
| CHK'D | R.JONES | APR08 | |
| APPV'D | -- | -- | |
| Q.A | | | SHEET 1 OF 2 |

GENERAL ARRANGEMENT



| ITEM NO. | PART NUMBER | QTY. |
|----------|--|------|
| 1 | D080206_Drive_Pull Module_bearing pole (load cell balance) | 2 |
| 2 | D080204_Drive_Pull Module_Endplate (drive module) | 1 |
| 3 | D080203_Drive_Pull Module_Base Plate_drive mount | 1 |
| 4 | D080205_Drive_Pull Module_short extrusion (drive module) | 4 |
| 5 | Rail base_JSLB04_stainless | 2 |
| 6 | Washer ISO 7093 - 4 | 8 |
| 7 | ISO 4762 M4 x 12 --- 12N | 8 |
| 8 | ISO 4762 M8 x 20 --- 20N | 8 |

| | | | | |
|--|--|---|--|---|
| NOTES (UNLESS OTHERWISE SPECIFIED): | | DO NOT SCALE DRAWING | | A3 |
| DIMENSIONS ARE IN MILLIMETERS | | QUANTITY: | |  Institute for Gravitational Research University of Glasgow GEO 600 Group |
| GENERAL TOLERANCES: 0<X<50mm: ±0.1mm 50<X<150mm: ±0.2mm 100<X<1000mm: ±0.3mm 1000>: ±0.5mm ANGULAR: ±0.2° | | MATERIAL: *..* | | |
| 1. DEBUR AND BREAK SHARP EDGES | | SURFACE TEXTURE (µm): ✓ UNLESS STATED | | |
| | | FINISH: | | SYSTEM: IGR_MKII Strength Testing Machine |
| | | DRAWN R.JONES | | DATE APR08 |
| | | CHK'D -- | | ASSEMBLY: Drive/Pull Module |
| | | APPV'D -- | | PART NAME: Drive/Pull Module |
| | | Q.A | | DWG NO. D080198 |
| | | | | REV: 00 |
| | | SCALE:1:5 | | PROJECTION: (3rd ANGLE)  |
| | | | | SHEET 2 OF 2 |

EXPLODED ISOMETRIC