

NOTES CONTINUED:  
 5. FULL WELDED CONSTRUCTION.

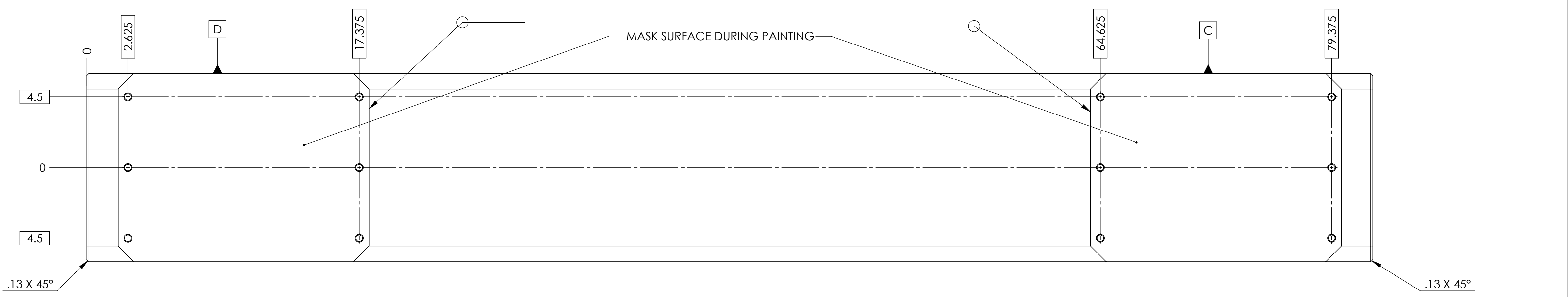
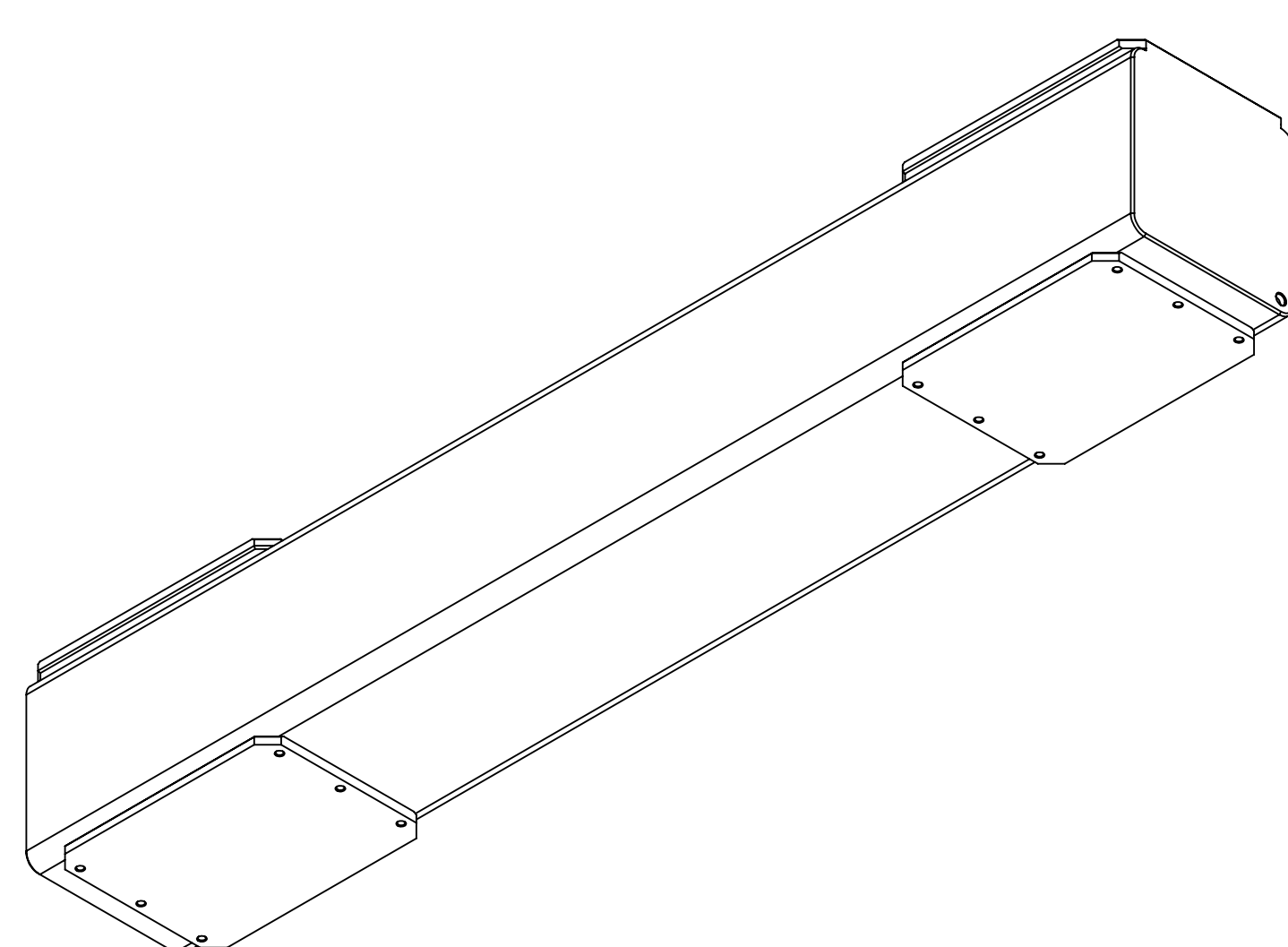
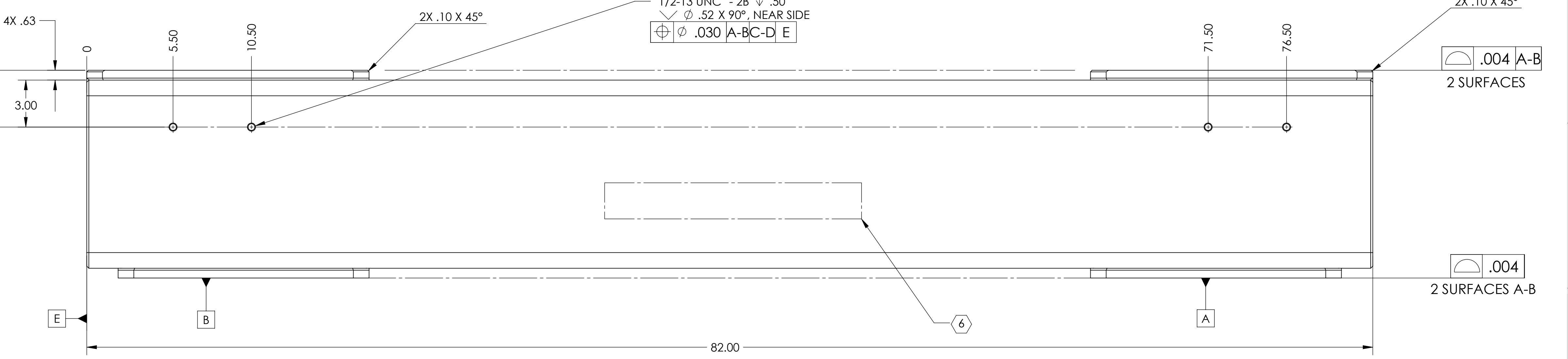
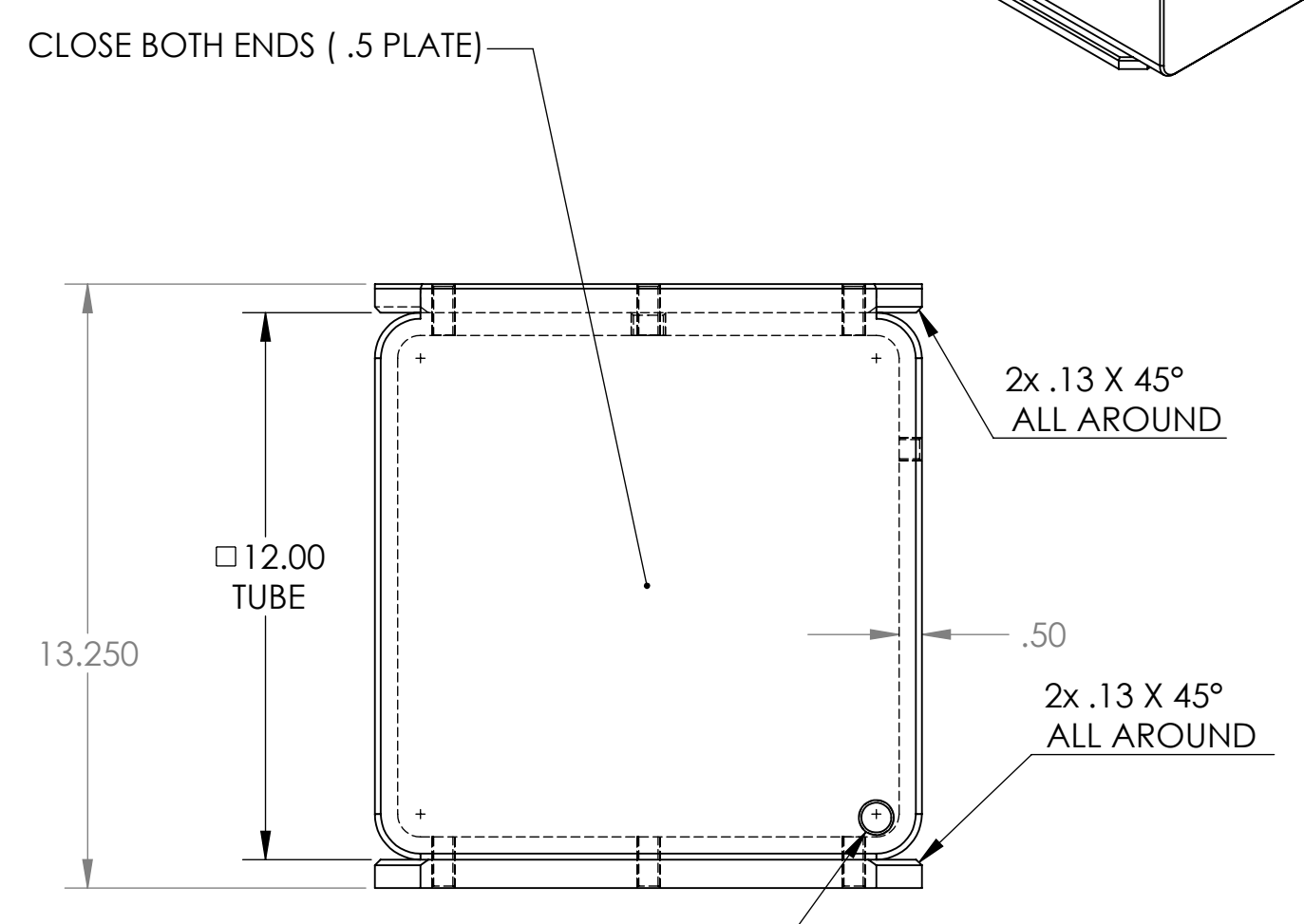
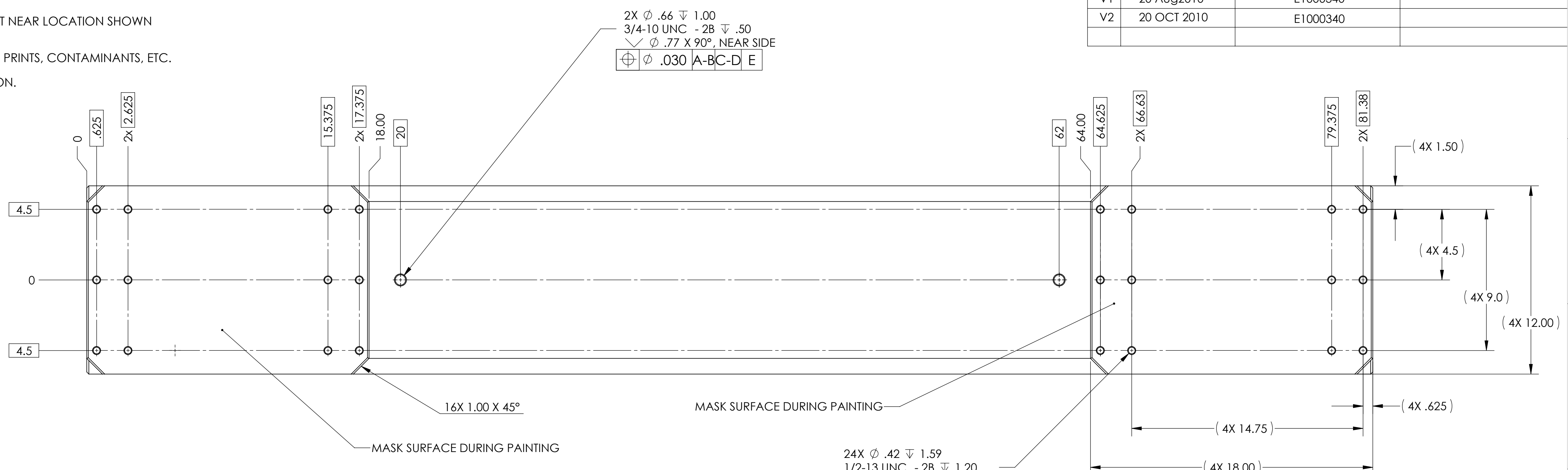
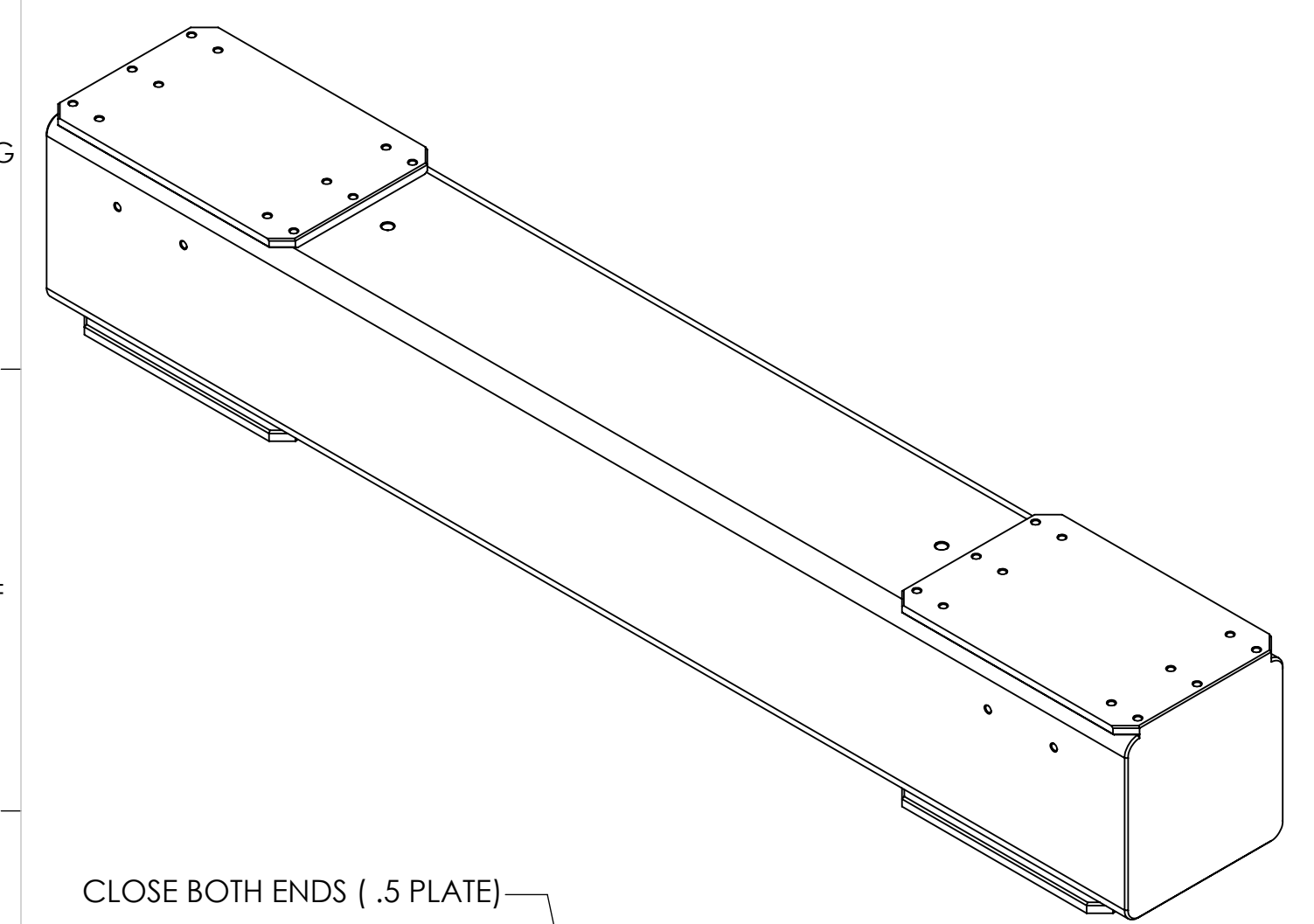
6. PART NUMBER (DRAWING NO. PLUS REVISION) TO BE CLEARLY MARKED ON THE PART NEAR LOCATION SHOWN  
 EXAMPLE: **D1002125-V1** (~ 1" CHARACTERS)

7. BEFORE FINISHING REMOVE ALL: MILL SCALE, OXIDATION, GREASE, OIL, DIRT, FINGER PRINTS, CONTAMINANTS, ETC.

8. PRIME WITH SHERWIN WILLIAMS INDUSTRIAL WASH PRIMER "P60G2" PER SPECIFICATION.

9. PAINT SMOOTH WHITE, SHERWIN WILLIAMS "POLANE HS-PLUS" POLYURETHANE ENAMEL P/N F63W66.

REV.	DATE	DCN #	DRAWING TREE #
V1	20 Aug2010	E1000340	
V2	20 OCT 2010	E1000340	



NOTES AND TOLERANCES: (UNLESS OTHERWISE SPECIFIED)				LIGO CALIFORNIA INSTITUTE OF TECHNOLOGY MASSACHUSETTS INSTITUTE OF TECHNOLOGY		PART NAME	
1. INTERPRET DRAWING PER ASME Y14.5-1994. 2. REMOVE ALL SHARP EDGES, R.02 MIN. 3. DO NOT SCALE FROM DRAWING. 4. ALL MACHINING FLUIDS MUST BE FULLY SYNTHETIC, FULLY WATER SOLUBLE AND FREE OF SULFUR, SILICONE, AND CHLORINE.				<b>ADVANCED LIGO</b>		<b>Cross Brace, Stand, Test, BSC-ISI+Quad + HAM-ISI, aLIGO</b>	
DIMENSIONS ARE IN INCHES TOLERANCES: .XX $\pm .025$ .XXX $\pm .010$ ANGULAR $\pm 0.5^\circ$				MATERIAL: <b>ASTM a500 Grade-B</b> FINISH: <b>125 <math>\mu</math>inch</b>		DESIGNER: sbarnum 10 Aug 2010 DRAFTER: SBARNUM 18 AUG 2010 CHECKER: MHILLARD 19 OCT 2010 APPROVAL: KMAISON 20 OCT 2010	
				SYSTEM: <b>ADVANCED LIGO</b> NEXT ASSY: <b>D1002124</b>		SIZE: <b>D</b> DWG. NO.: <b>D1002125</b> SCALE: 1:1 PROJECTION:	
						REV. <b>v2</b> SHEET 1 OF 1	

D1002125 Cross Brace, Stand, Test, BSC-ISI+Quad + HAM-ISI, aLIGO, PART PDM REV: X-000, DRAWING PDM REV: X-000