

NOTES CONTINUED:

5. FULL WELDED CONSTRUCTION.

6. PART NUMBER (DRAWING NO. PLUS REVISION AND "SET #") TO BE CLEARLY MARKED ON THE PART
 EXAMPLE: **D1002126 V1 SET OF 4 # 1** (~ 1" CHARACTERS) (ONE SET IS 4 LEGS)

7. BEFORE FINISHING REMOVE ALL: MILL SCALE, OXYDATION, GREASE, OIL, DIRT, FINGER PRINTS, ETC.

8. PRIME WITH SHERWIN WILLIAMS INDUSTRIAL WASH PRIMER "P60G2" PER SPECIFICATON.

9. PAINT SMOOTH WHITE, SHERWIN WILLIAMS "POLANE HS-PLUS" POLYURETHANE ENAMEL P/N F63W66.

REV.	DATE	DCN #	DRAWING TREE #
V1	20 Aug 2010	E1000340	
V2	20 OCT 2010	E1000340	

/// .006 A

▨ .004 A

MASK SURFACE DURING PAINTNG

MASK SURFACE DURING PAINTNG

6X ϕ .55 ∇ 1.00
 \surd ϕ .58 X 90°, NEAR SIDE
 \oplus ϕ .020 A B C

ϕ .66 ∇ 1.10
 3/4-10 UNC - 2B ∇ .60
 \surd ϕ .80 X 90°, FAR SIDE
 \oplus ϕ .024 A B C

.75

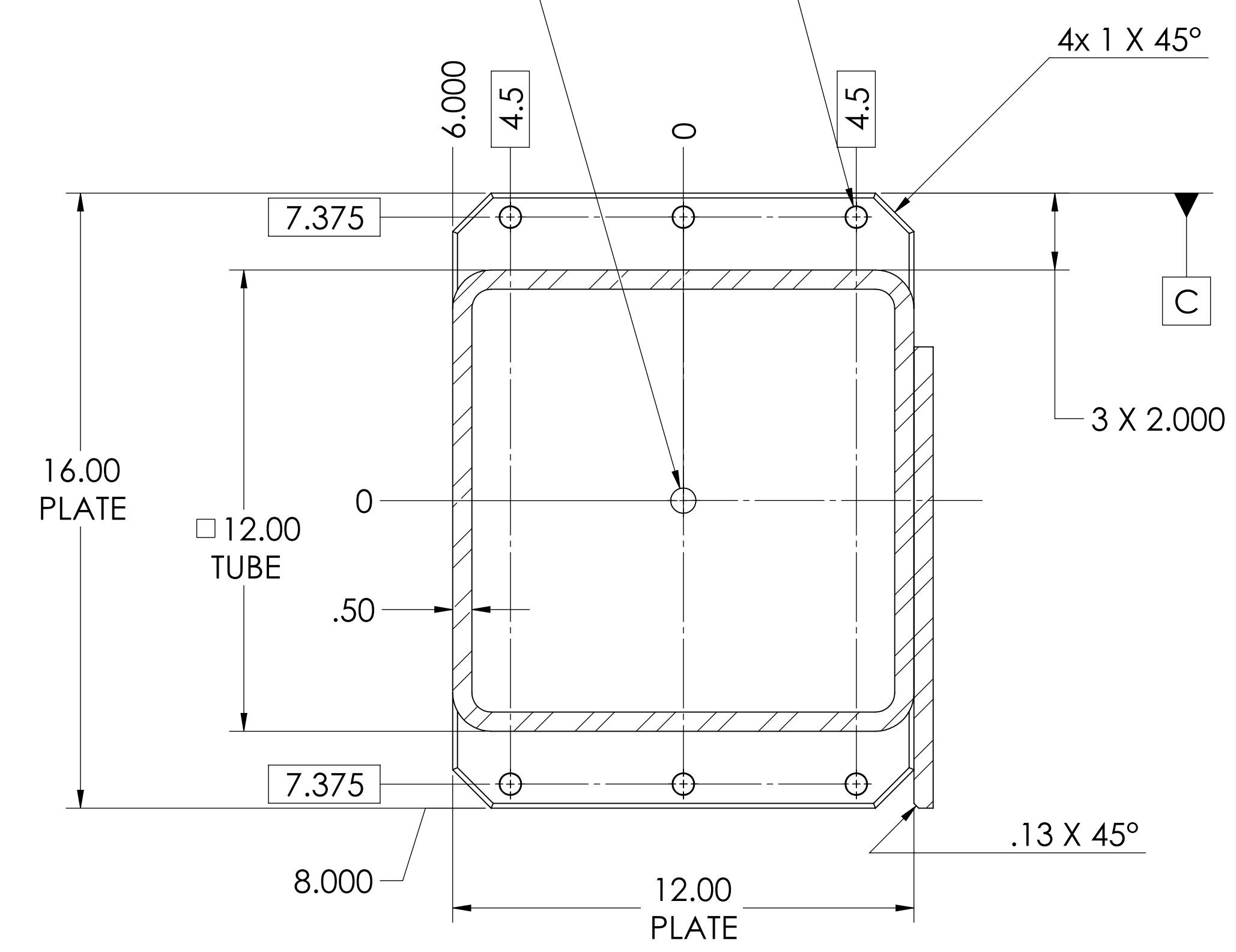
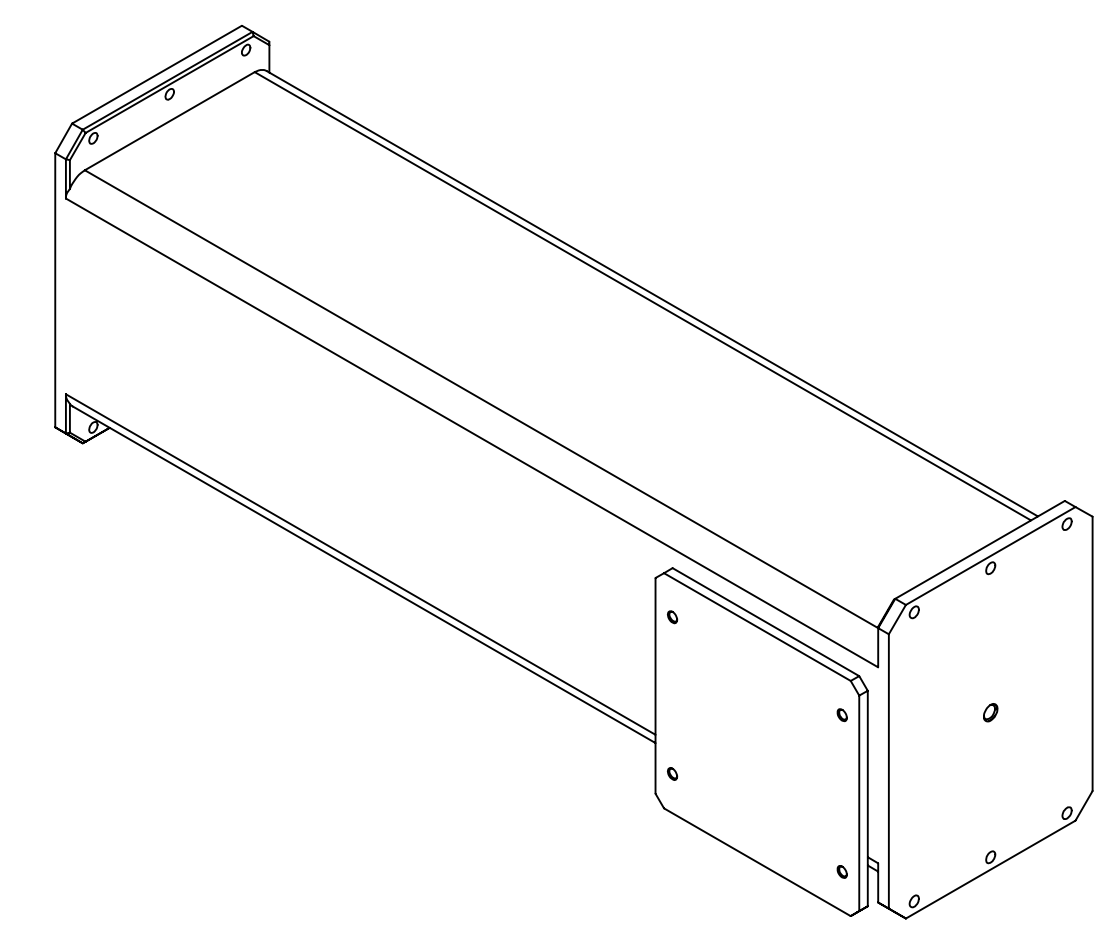
.50

▨ .006 A

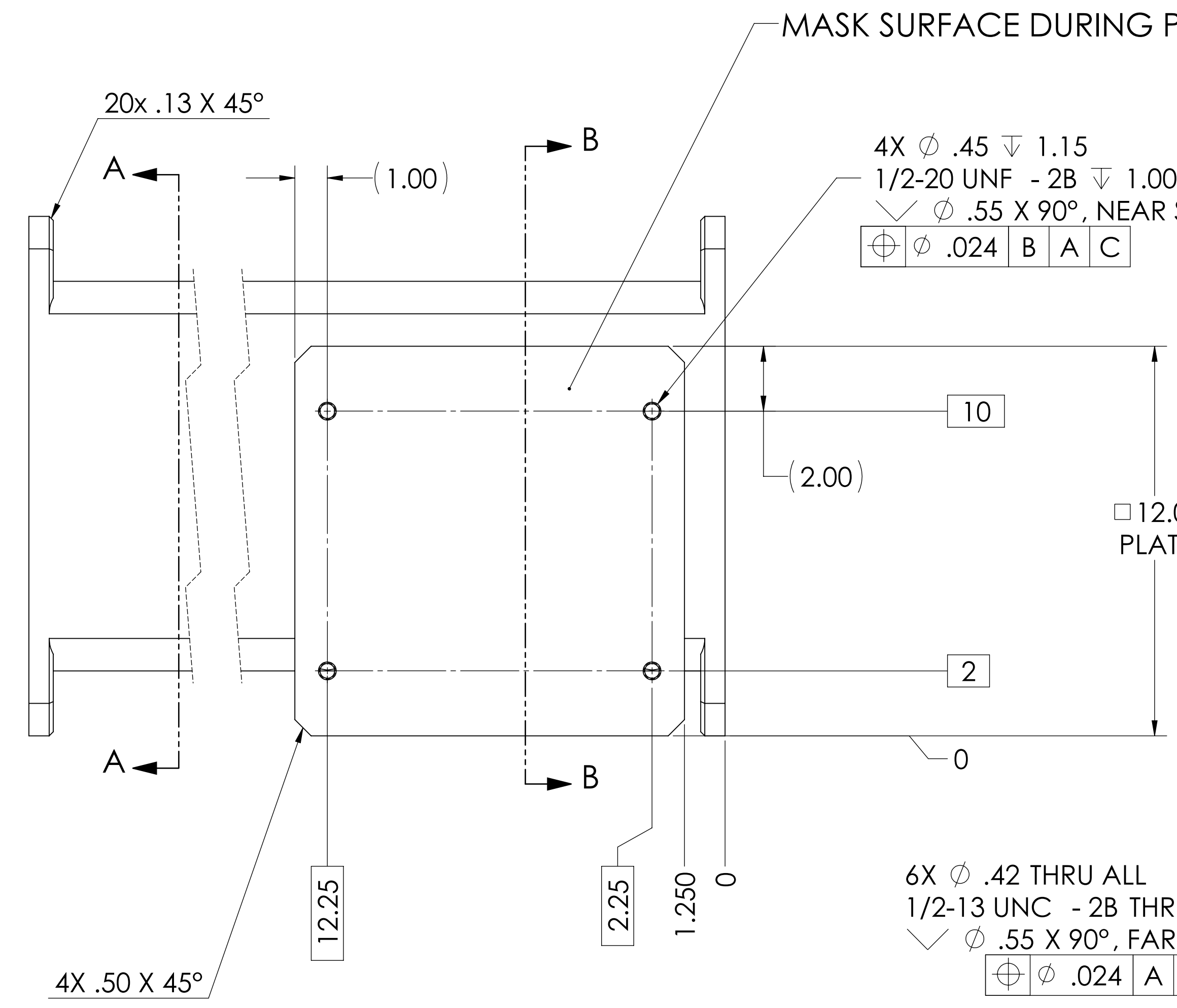
B

(47.63 TUBE)

49.13



SECTION B-B



SECTION A-A
 (LAYOUT & DIMENSIONS SAME AS SECTION B-B)

NOTES AND TOLERANCES: (UNLESS OTHERWISE SPECIFIED)				LIGO CALIFORNIA INSTITUTE OF TECHNOLOGY MASSACHUSETTS INSTITUTE OF TECHNOLOGY		PART NAME					
1. INTERPRET DRAWING PER ASME Y14.5-1994. 2. REMOVE ALL SHARP EDGES, R.02 MIN. 3. DO NOT SCALE FROM DRAWING. 4. ALL MACHINING FLUIDS MUST BE FULLY SYNTHETIC, FULLY WATER SOLUBLE AND FREE OF SULFUR, SILICONE, AND CHLORINE.				ADVANCED LIGO		Right Leg, Stand, Test, BSC-QUAD + HAM, ISIs, aLIGO		DESIGNER: sbarnum 10 Aug 2010 DRAFTER: SBARNUM 23 AUG 2010 CHECKER: MHILLARD 19 OCT 2010 APPROVAL: KMAISON 20 OCT 2010		SIZE: D DWG. NO.: D1002126 REV.: v2	
DIMENSIONS ARE IN INCHES TOLERANCES: .XX ± .025 .XXX ± .010 ANGULAR ± .5°				MATERIAL: ASTM a500 Grade-B FINISH: 125 μ inch		NEXT ASSY: D1002124		SCALE: 1:3 PROJECTION:		SHEET 1 OF 1	

D1002126 Right Leg, Stand, Test, BSC-QUAD + HAM, ISIs, aLIGO, PART PDM REV: X.000, DRAWING PDM REV: X.000