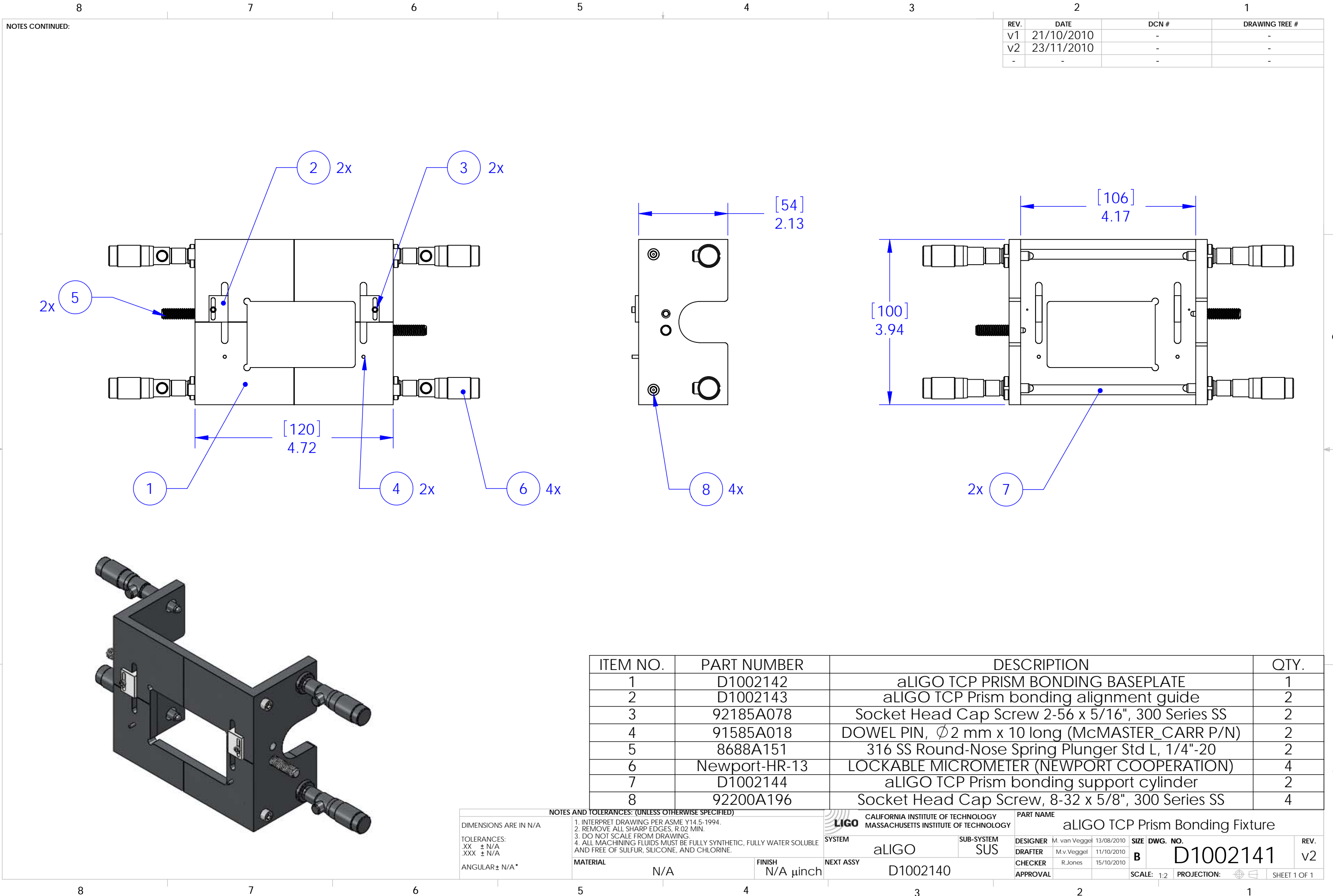


D1002141_alIGO_TCP_PRISM_BONDING_FIXTURE, PART PDM REV: v2, DRAWING PDM REV:



REV.	DATE	DCN #	DRAWING TREE #
v1	21/10/2010	-	-
v2	23/11/2010	-	-
-	-	-	-

ITEM NO.	PART NUMBER	DESCRIPTION	QTY.
1	D1002142	aLIGO TCP PRISM BONDING BASEPLATE	1
2	D1002143	aLIGO TCP Prism bonding alignment guide	2
3	92185A078	Socket Head Cap Screw 2-56 x 5/16", 300 Series SS	2
4	91585A018	DOWEL PIN, ϕ 2 mm x 10 long (McMASTER_CARR P/N)	2
5	8688A151	316 SS Round-Nose Spring Plunger Std L, 1/4"-20	2
6	Newport-HR-13	LOCKABLE MICROMETER (NEWPORT COOPERATION)	4
7	D1002144	aLIGO TCP Prism bonding support cylinder	2
8	92200A196	Socket Head Cap Screw, 8-32 x 5/8", 300 Series SS	4

NOTES AND TOLERANCES: (UNLESS OTHERWISE SPECIFIED)

1. INTERPRET DRAWING PER ASME Y14.5-1994.
 2. REMOVE ALL SHARP EDGES, R.02 MIN.
 3. DO NOT SCALE FROM DRAWING.
 4. ALL MACHINING FLUIDS MUST BE FULLY SYNTHETIC, FULLY WATER SOLUBLE AND FREE OF SULFUR, SILICONE, AND CHLORINE.

DIMENSIONS ARE IN N/A
 TOLERANCES:
 .XX ± N/A
 .XXX ± N/A
 ANGULAR ± N/A*

MATERIAL: N/A FINISH: N/A μ inch

LIGO CALIFORNIA INSTITUTE OF TECHNOLOGY
 MASSACHUSETTS INSTITUTE OF TECHNOLOGY

SYSTEM: aLIGO SUB-SYSTEM: SUS NEXT ASSY: D1002140

PART NAME: aLIGO TCP Prism Bonding Fixture

DESIGNER: M.van Veggel 13/08/2010	SIZE: B	DWG. NO.: D1002141	REV.: v2
DRAFTER: M.v.Veggel 11/10/2010	SCALE: 1:2	PROJECTION:	SHEET 1 OF 1
CHECKER: R.Jones 15/10/2010			
APPROVAL:			