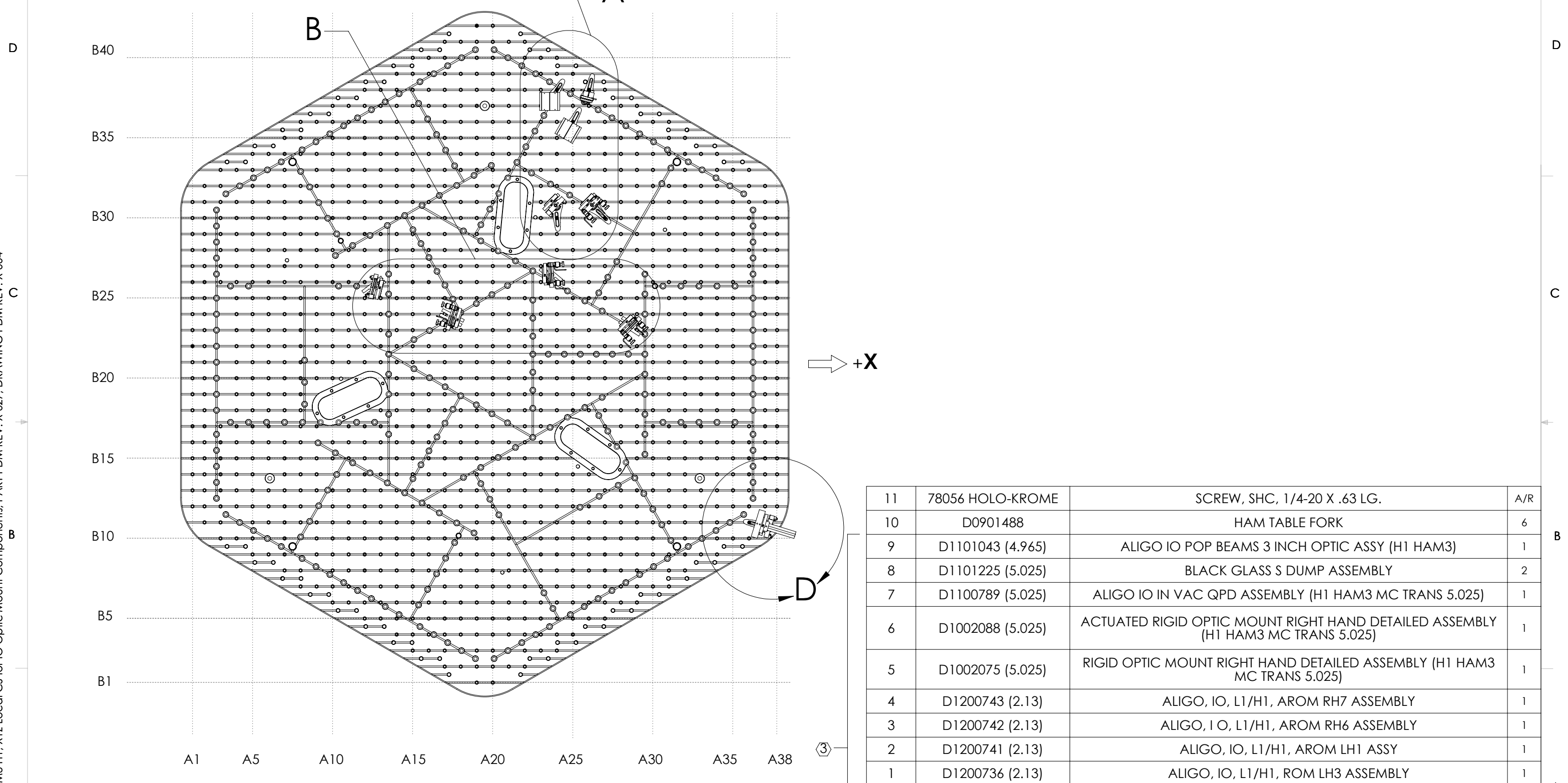


D1002171 AdvLIGO SEI HAM3-H1, XYZ Local CS for IO Optic Mount Components, PART PDM REV: X-027, DRAWING PDM REV: X-004

③ FIGURES IN PARENTHESES NEXT TO ITEM PART NUMBER INDICATE POSTS HEIGHT.

REV.	DATE	DCN #	DRAWING TREE #
v1	26 APR 2012	-	-
v2	16 AUG 2012	E1200773-x0	-
-	-	-	-



TOP

- REFER TO DOCUMENT D1101296 FOR OPTICAL TABLE HOLE TABULATION CONVENTION.
- REFER TO G1000125 FOR ISI NAMING AND ORIENTATION CONVENTION.

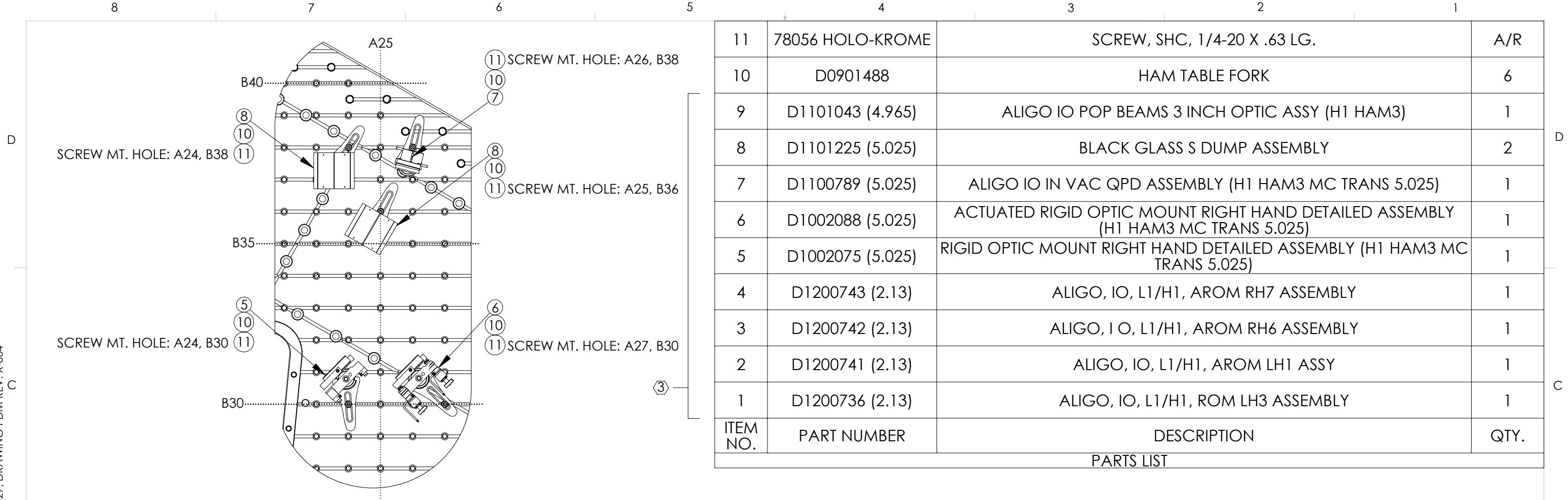
NOTES: UNLESS OTHERWISE SPECIFIED.

11	78056 HOLO-KROME	SCREW, SHC, 1/4-20 X .63 LG.	A/R
10	D0901488	HAM TABLE FORK	6
9	D1101043 (4.965)	ALIGO IO POP BEAMS 3 INCH OPTIC ASSY (H1 HAM3)	1
8	D1101225 (5.025)	BLACK GLASS S DUMP ASSEMBLY	2
7	D1100789 (5.025)	ALIGO IO IN VAC QPD ASSEMBLY (H1 HAM3 MC TRANS 5.025)	1
6	D1002088 (5.025)	ACTUATED RIGID OPTIC MOUNT RIGHT HAND DETAILED ASSEMBLY (H1 HAM3 MC TRANS 5.025)	1
5	D1002075 (5.025)	RIGID OPTIC MOUNT RIGHT HAND DETAILED ASSEMBLY (H1 HAM3 MC TRANS 5.025)	1
4	D1200743 (2.13)	ALIGO, IO, L1/H1, AROM RH7 ASSEMBLY	1
3	D1200742 (2.13)	ALIGO, IO, L1/H1, AROM RH6 ASSEMBLY	1
2	D1200741 (2.13)	ALIGO, IO, L1/H1, AROM LH1 ASSY	1
1	D1200736 (2.13)	ALIGO, IO, L1/H1, ROM LH3 ASSEMBLY	1
ITEM NO.	PART NUMBER	DESCRIPTION	QTY.

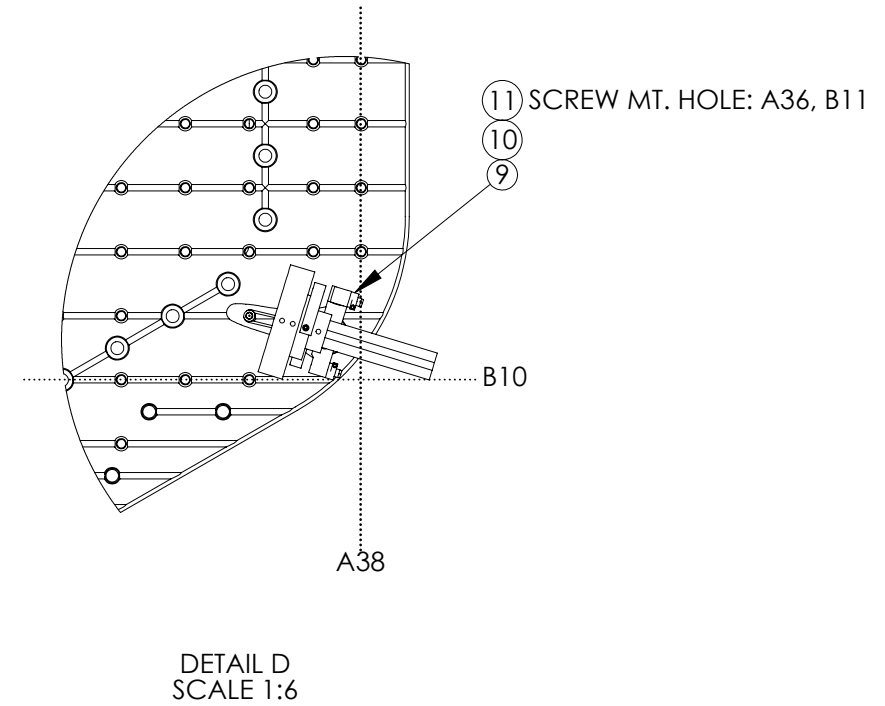
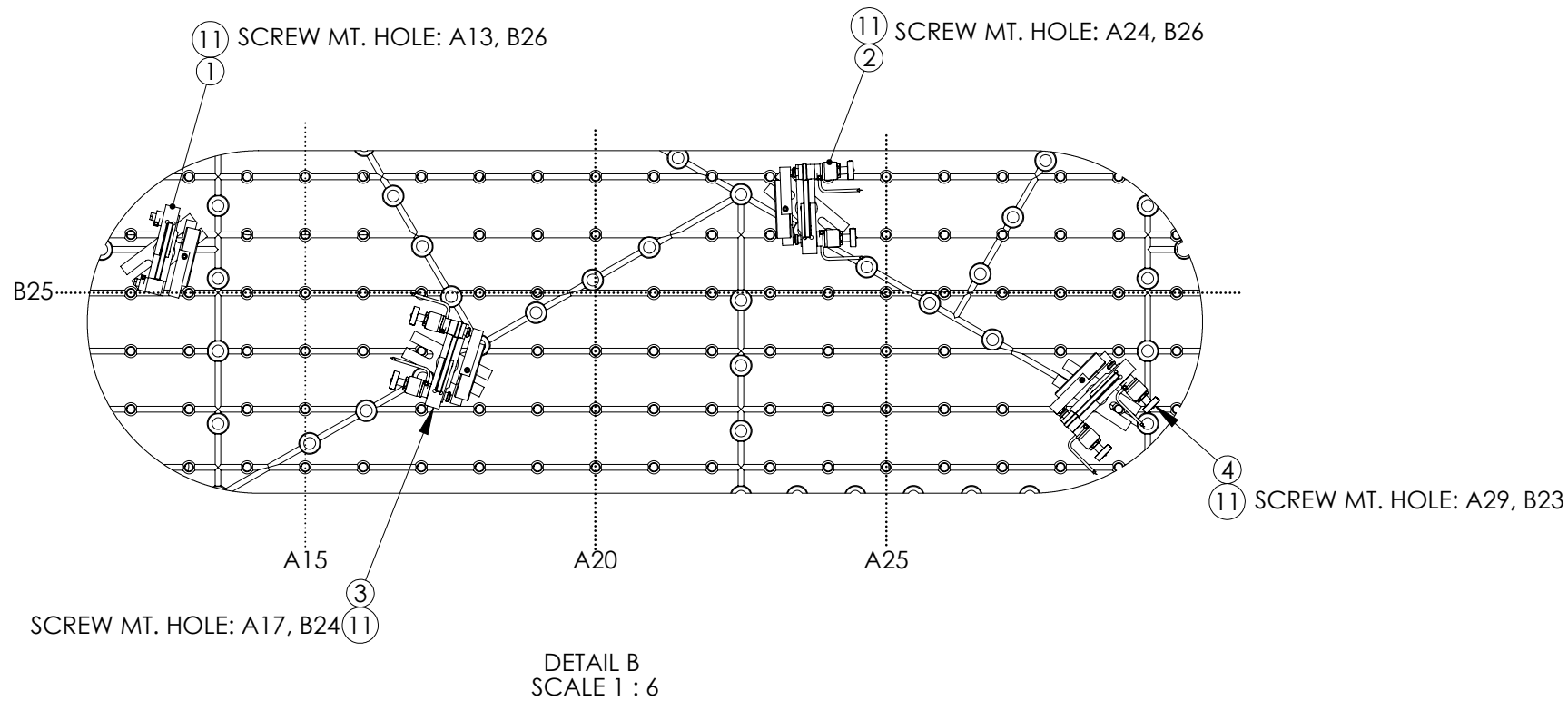
NOTES AND TOLERANCES: (UNLESS OTHERWISE SPECIFIED)

MATERIAL		N/A		FINISH		N/A μinch		NEXT ASSY		D0901094							
CALIFORNIA INSTITUTE OF TECHNOLOGY MASSACHUSETTS INSTITUTE OF TECHNOLOGY				PART NAME AdvLIGO SEI HAM3-H1, XYZ LOCAL CS for IO Optic Mount Components				DESIGNER E.SANCHEZ		DRAFTER 26 APR 2012		SIZE DWG. NO. B D1002171		REV. v2			
								CHECKER SEE DCC		SEE DCC		SCALE: 1:12		PROJECTION:		SHEET 1 OF 3	

D1002171 AdvLIGO SEI HAM3-H1, XYZ Local CS for IO Optic Mount Components, PART PDM REV: X-027, DRAWING PDM REV: X-004



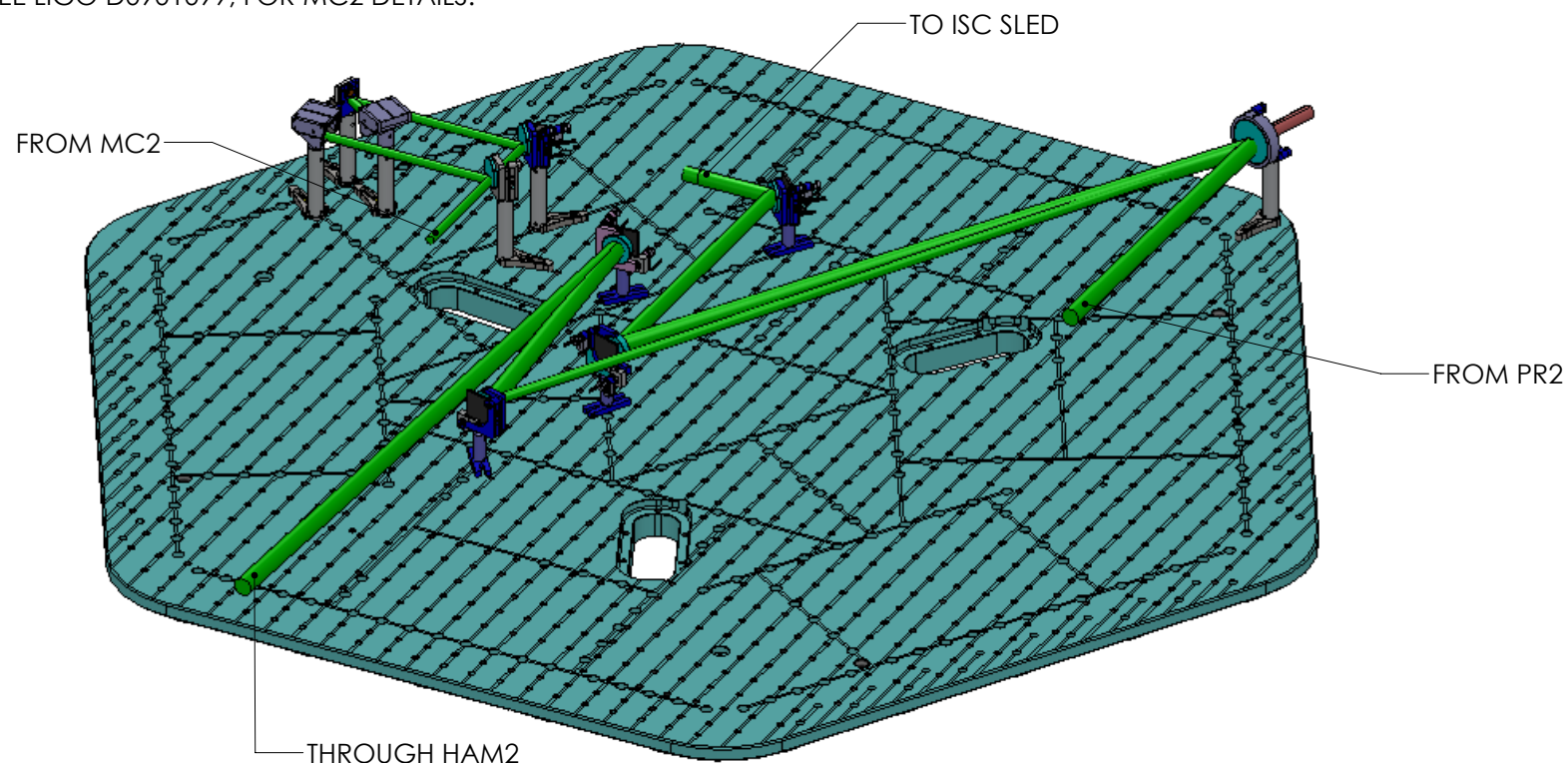
ITEM NO.	PART NUMBER	DESCRIPTION	QTY.
11	78056 HOLO-KROME	SCREW, SHC, 1/4-20 X .63 LG.	A/R
10	D0901488	HAM TABLE FORK	6
9	D1101043 (4.965)	ALIGO IO POP BEAMS 3 INCH OPTIC ASSY (H1 HAM3)	1
8	D1101225 (5.025)	BLACK GLASS S DUMP ASSEMBLY	2
7	D1100789 (5.025)	ALIGO IO IN VAC QPD ASSEMBLY (H1 HAM3 MC TRANS 5.025)	1
6	D1002088 (5.025)	ACTUATED RIGID OPTIC MOUNT RIGHT HAND DETAILED ASSEMBLY (H1 HAM3 MC TRANS 5.025)	1
5	D1002075 (5.025)	RIGID OPTIC MOUNT RIGHT HAND DETAILED ASSEMBLY (H1 HAM3 MC TRANS 5.025)	1
4	D1200743 (2.13)	ALIGO, IO, L1/H1, AROM RH7 ASSEMBLY	1
3	D1200742 (2.13)	ALIGO, IO, L1/H1, AROM RH6 ASSEMBLY	1
2	D1200741 (2.13)	ALIGO, IO, L1/H1, AROM LH1 ASSY	1
1	D1200736 (2.13)	ALIGO, IO, L1/H1, ROM LH3 ASSEMBLY	1
PARTS LIST			



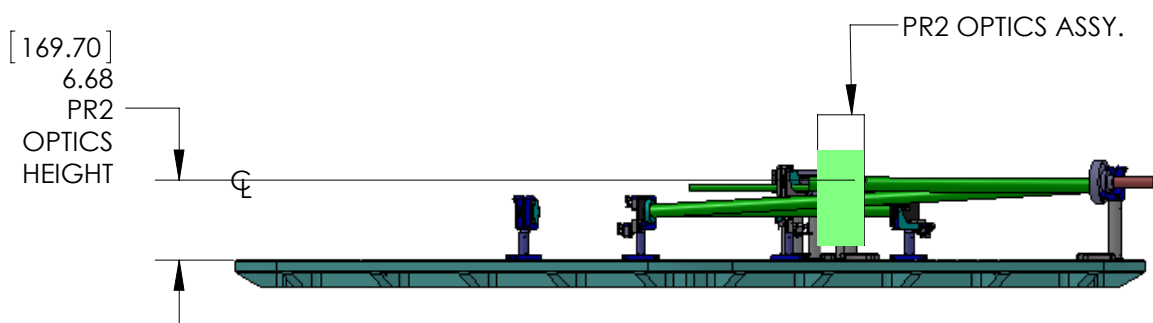
③ FIGURES IN PARENTHESES NEXT TO ITEM PART NUMBER INDICATE POSTS HEIGHT.

4. REFERENCE DOCUMENTATION:

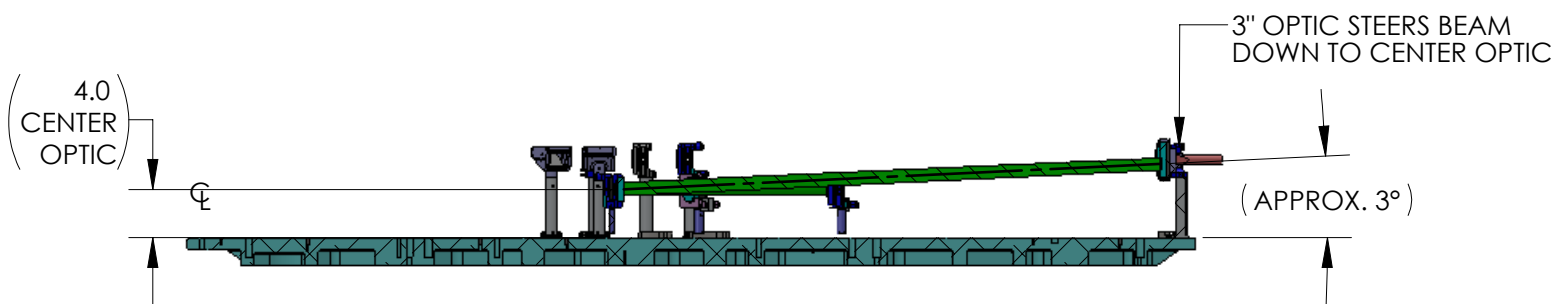
SEE LIGO E1100652, FOR ALIGO I/O IN VACUUM POST SPECIFICATIONS
 SEE LIGO D1000339, FOR ISC SLED POST HEIGHT DETAILS.
 SEE LIGO D0901098, FOR PR2 DETAILS.
 SEE LIGO D0901099, FOR MC2 DETAILS.



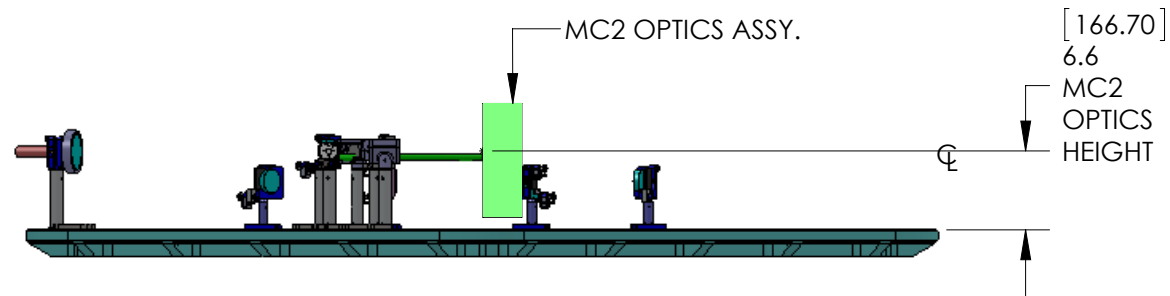
ISO VIEW
 (SUS STRUCTURES, ISC SLED, AND IRRELEVANT TEMS NOT SHOWN FOR CLARITY)



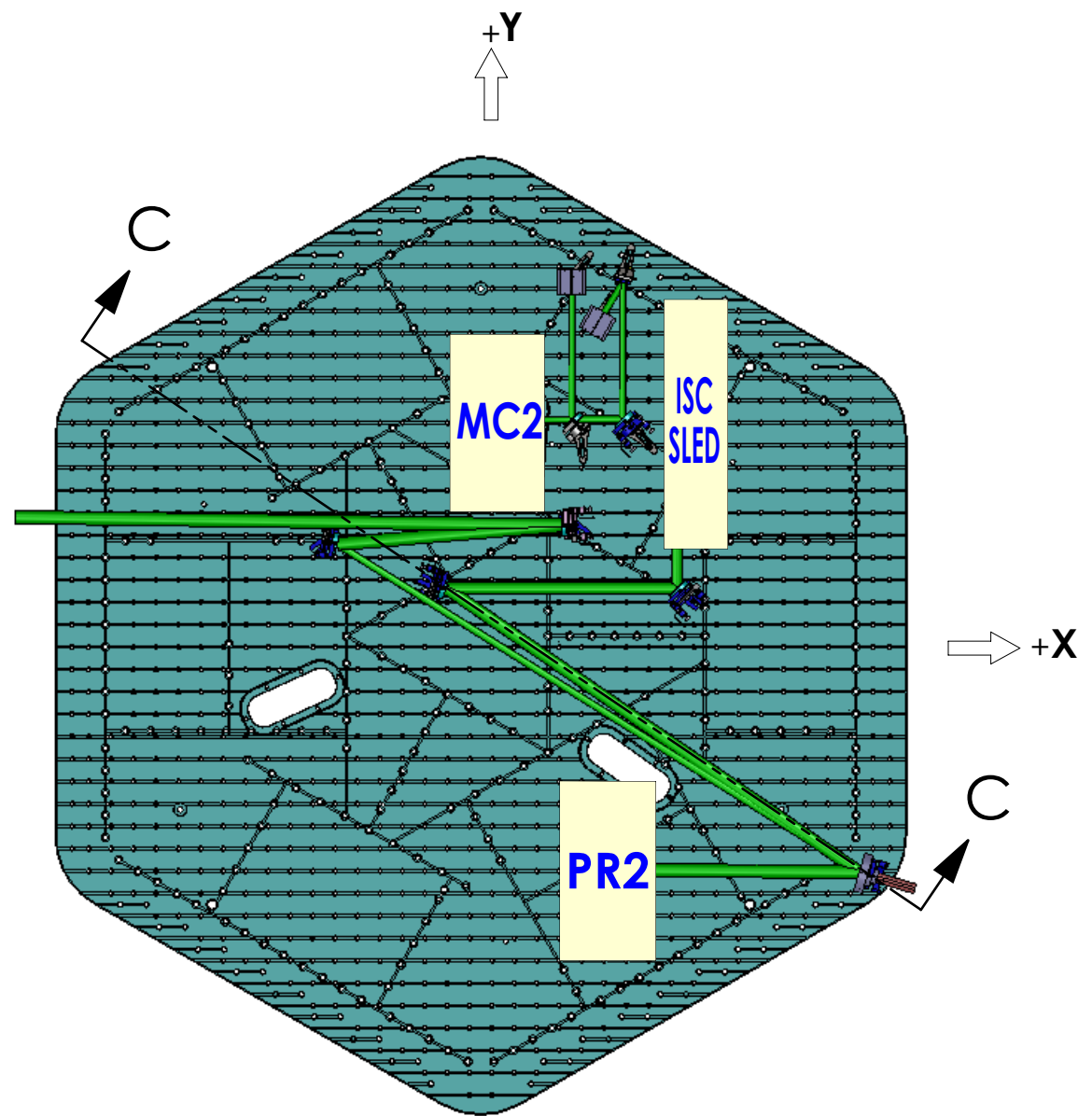
FRONT



SECTION C-C
 (ROTATED 34 DEG. CCW)



REAR VIEW
 (ROTATED 180 DEG. CCW)



TOP VIEW

LIGO CALIFORNIA INSTITUTE OF TECHNOLOGY
 MASSACHUSETTS INSTITUTE OF TECHNOLOGY

SIZE	DWG. NO.	REV.
B	D1002171	v2
SCALE: 1:128 PROJECTION:		SHEET 3 OF 3

D1002171 AdvLIGO SEI HAM3-H1, XYZ Local CS for IO Optic Mount Components, PART PDM REV: X-027, DRAWING PDM REV: X-004