

**NOTES CONTINUED:**  
 5. BAG AND TAG PARTS SEPARATELY WITH THEIR DRAWING PART NUMBER, REVISION, AND SERIAL NUMBER. SERIAL NUMBERS START AT 001 (UNLESS OTHERWISE SPECIFIED) FOR THE FIRST ARTICLE AND PROCEED CONSECUTIVELY.  
 EXAMPLE:  
 DXXXXXX-vY  
 S/N-001  
 6. APPROXIMATE WEIGHT = .652 LB. [.296 KG.]  
 7. ELECTRO-POLISH ADJUSTING SCREWS INDICATED PER LIGO SPECIFICATION E0900364-v7, SECTION 5.2.2.

REV.	DATE	DCN #	BOM #
v1	02 SEP 2010	E1000383-v1	E1000459-v1
v2	03 FEB 2011	E1100080-v1	E1000459-v2
-	-	-	-

D

D

C

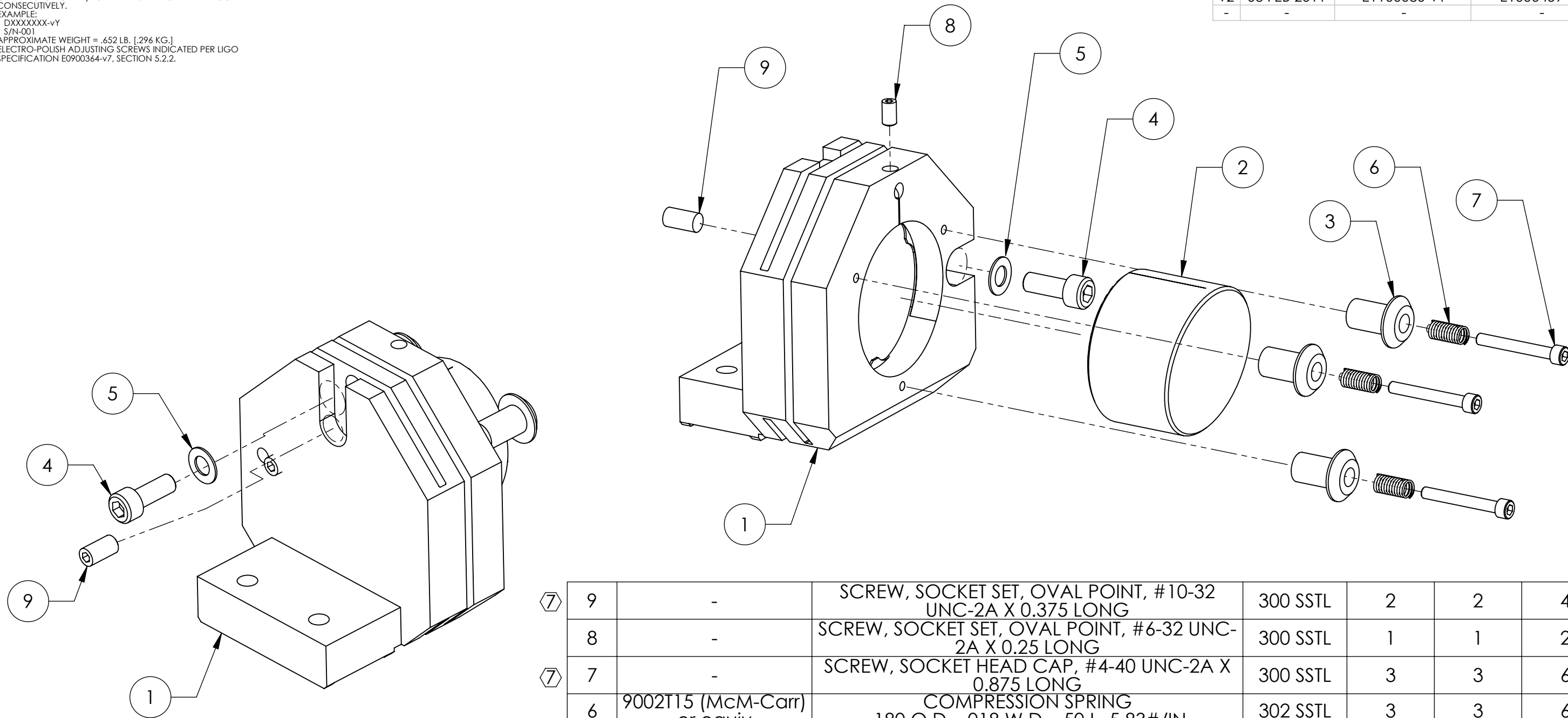
C

B

B

A

A



7	9	-	SCREW, SOCKET SET, OVAL POINT, #10-32 UNC-2A X 0.375 LONG	300 SSTL	2	2	4
	8	-	SCREW, SOCKET SET, OVAL POINT, #6-32 UNC-2A X 0.25 LONG	300 SSTL	1	1	2
7	7	-	SCREW, SOCKET HEAD CAP, #4-40 UNC-2A X 0.875 LONG	300 SSTL	3	3	6
	6	9002T15 (McM-Carr) or equiv	COMPRESSION SPRING .180 O.D., .018 W.D., .50 L, 5.83#/IN	302 SSTL	3	3	6
	5	MS 15795-846 (#10) FLAT WASHER	MS 15795 FLAT WASHERS	300 SSTL	2	2	4
7	4	MS16996-10	SCREW, SOCKET HEAD CAP, #10-32 UNF-2A X 0.5 LONG	300 SSTL	2	2	4
	3	D1100114	TMS TELESCOPE SECONDARY MIRROR CLAMP	6061-T6	3	0	3
	2	E0900349	ETM TELESCOPE SECONDARY PARABOLIC MIRROR, ADLIGO	ZERODUR	1	0	1
	1	D1002211	ALIGO TMS FLEXIBLE SEC MIRROR MOUNT	6061-T6	1	0	1
	ITEM NO.	PART NUMBER	DESCRIPTION	Material	Default/ QTY.	SPARE QTY.	TOTAL QTY.

**NOTES AND TOLERANCES: (UNLESS OTHERWISE SPECIFIED)**

1. INTERPRET DRAWING PER ASME Y14.5-1994.  
 2. REMOVE ALL SHARP EDGES, R.02 MIN.  
 3. DO NOT SCALE FROM DRAWING.  
 4. ALL MACHINING FLUIDS MUST BE FULLY SYNTHETIC, FULLY WATER SOLUBLE AND FREE OF SULFUR, SILICONE, AND CHLORINE.

DIMENSIONS ARE IN INCHES  
 TOLERANCES:  
 .XX ± .01  
 .XXX ± .005  
 ANGULAR ± 1.0°

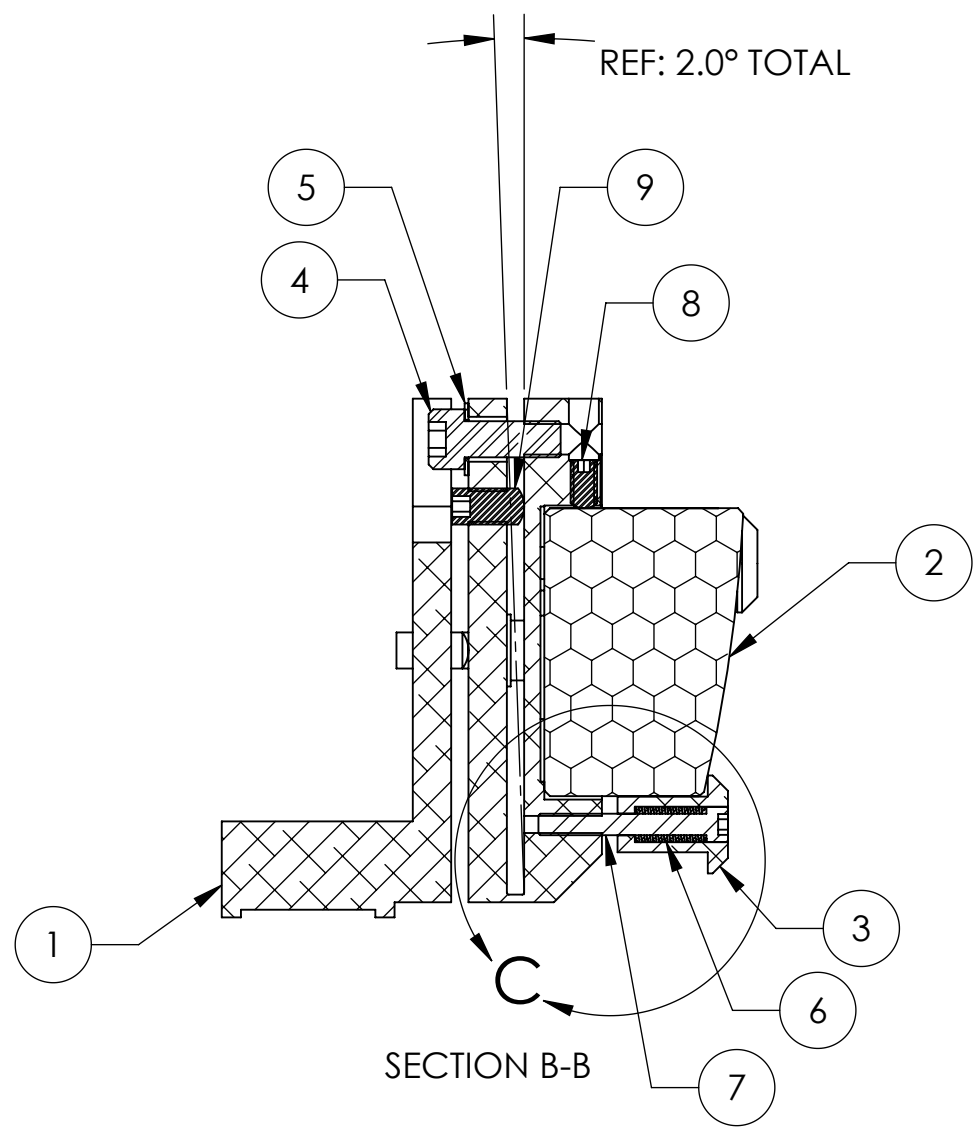
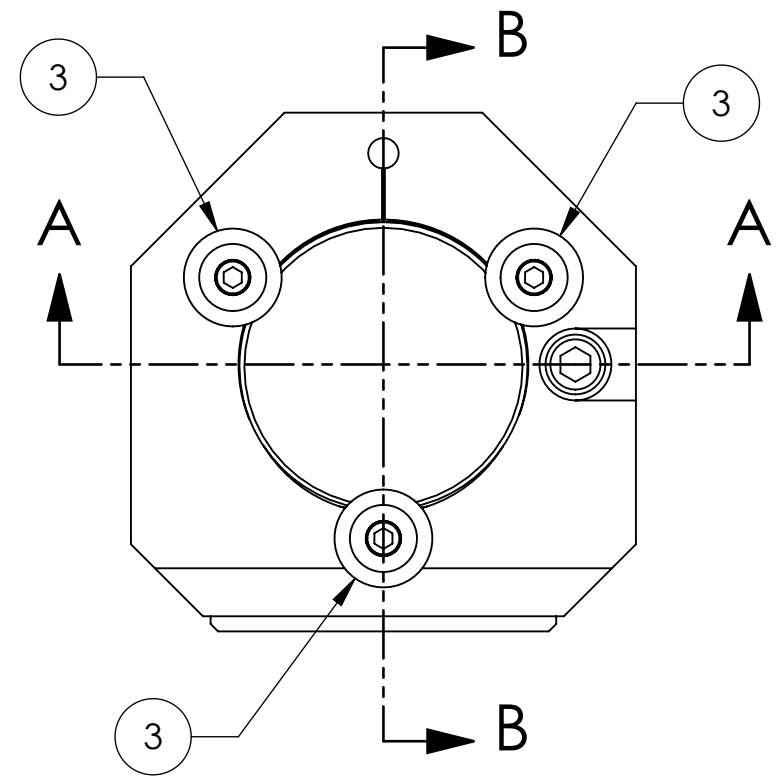
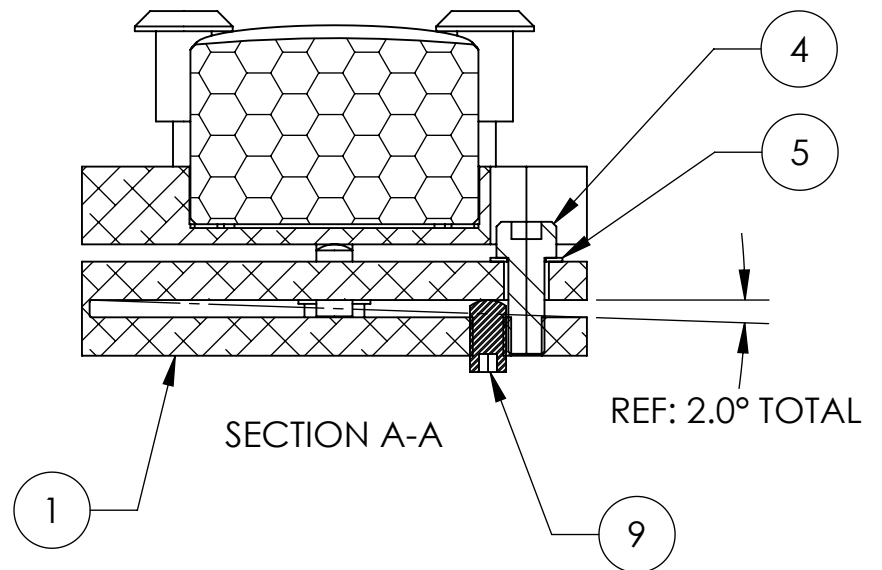
**LIGO** CALIFORNIA INSTITUTE OF TECHNOLOGY MASSACHUSETTS INSTITUTE OF TECHNOLOGY  
 SYSTEM LIGO SUB-SYSTEM AOS  
 NEXT ASSY D1001600


PART NAME  
**ALIGO TMS FLEXIBLE SEC MIRROR MT. ASSY**  
 DESIGNER K. MAILAND 08/15/2010  
 DRAFTER M. MILLER 08/17/2010  
 CHECKER  
 APPROVAL

SCALE: 1:1 PROJECTION: SHEET 1 OF 3

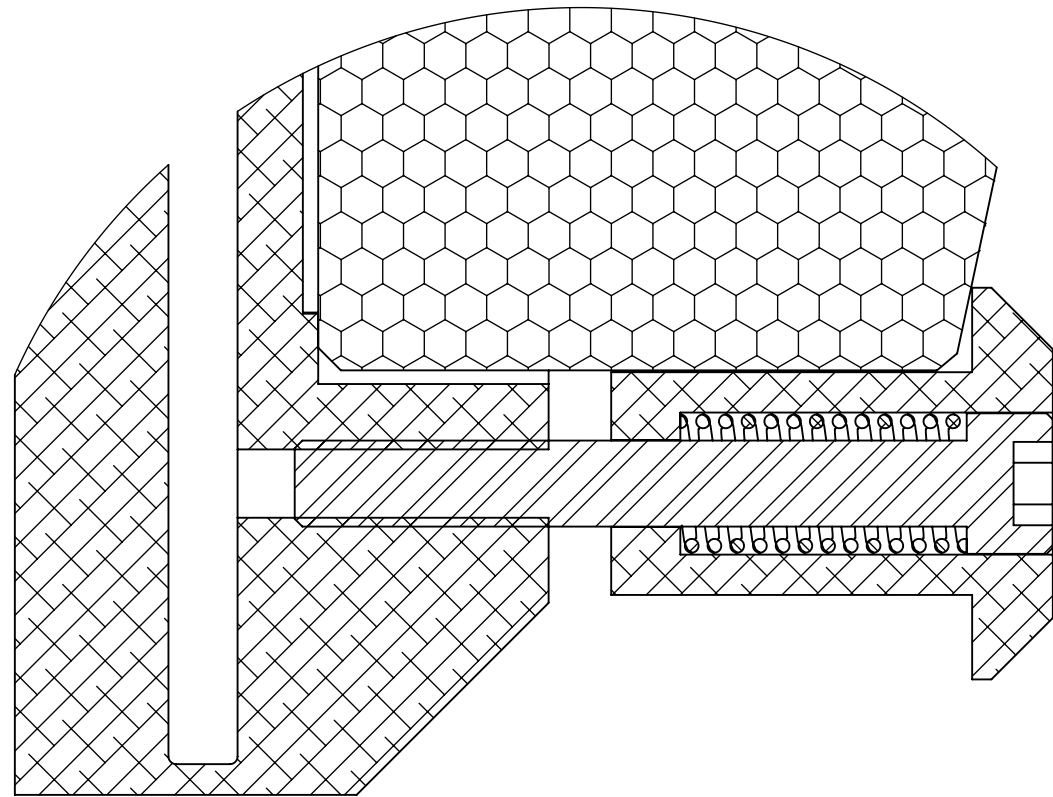
SIZE DWG. NO. **B D1002210** REV. **v2**

D1002210\_qLIGO\_TMS FLEXIBLE SEC MIRROR MT. ASSY., PART PDM REV: X-056, DRAWING PDM REV: X-026





 <b>CALIFORNIA INSTITUTE OF TECHNOLOGY</b> <b>MASSACHUSETTS INSTITUTE OF TECHNOLOGY</b>		
SIZE	DWG. NO.	REV.
<b>B</b>	D1002210	v2
SCALE: 1:1	PROJECTION:	SHEET 2 OF 3

D1002210\_dLIGO\_TMS FLEXIBLE SEC. MIRROR MT. ASSY., PART PDM REV: X-056, DRAWING PDM REV: X-026



REF:  
SCREW HEAD FLUSH WITH CLAMP FACE  
COMPRESSIVE FORCE 1 Lb  
3 CLAMPS = 3 Lb

DETAIL C  
SCALE 4 : 1

 CALIFORNIA INSTITUTE OF TECHNOLOGY MASSACHUSETTS INSTITUTE OF TECHNOLOGY	
SIZE <b>B</b>	DWG. NO. D1002210
SCALE: 8:1	REV. v2
PROJECTION: 	SHEET 3 OF 3