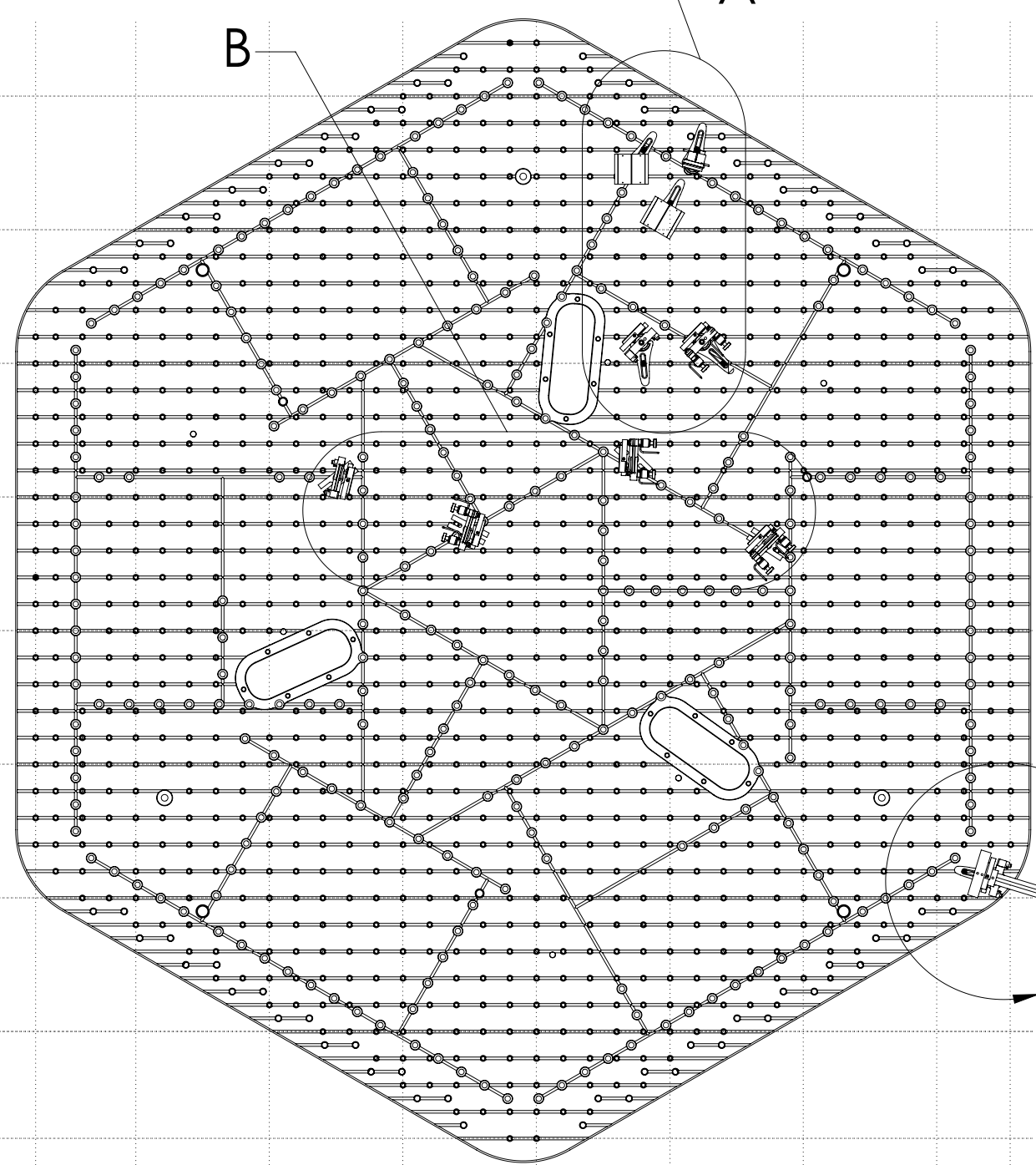


③ FIGURES IN PARENTHESES NEXT TO ITEM PART NUMBER INDICATE POSTS HEIGHT.

REV.	DATE	DCN #	DRAWING TREE #
v1	02 AUG 2011	-	-
v6	16 AUG 2012	E1200773-x0	-
-	-	-	-



ITEM NO.	PART NUMBER	DESCRIPTION	QTY.
11	78056 HOLO-KROME	SCREW, SHC, 1/4-20 X .63 LG.	A/R
10	D0901488	HAM TABLE FORK	6
9	D1101043 (4.585)	ALIGO IO POP BEAMS 3 INCH OPTIC ASSY (L1 HAM3)	1
8	D1101225 (4.435)	BLACK GLASS S DUMP ASSEMBLY	2
7	D1100789 (4.435)	ALIGO IO IN VAC QPD ASSEMBLY (L1 HAM3 MC TRANS 4.435)	1
6	D1002088 (4.585)	ACTUATED RIGID OPTIC MOUNT RIGHT HAND DETAILED ASSEMBLY (L1 HAM3 TABLE 4.585)	1
5	D1002075 (4.585)	RIGID OPTIC MOUNT RIGHT HAND DETAILED ASSEMBLY (L1 HAM3 TABLE 4.585)	1
4	D1200743 (2.13)	ALIGO, IO, L1/H1, AROM RH7 ASSEMBLY	1
3	D1200741 (2.13)	ALIGO, IO, L1/H1, AROM LH1 ASSY	1
2	D1200742 (2.13)	ALIGO, IO, L1/H1, AROM RH6 ASSEMBLY	1
1	D1200736 (2.13)	ALIGO, IO, L1/H1, ROM LH3 ASSEMBLY	1

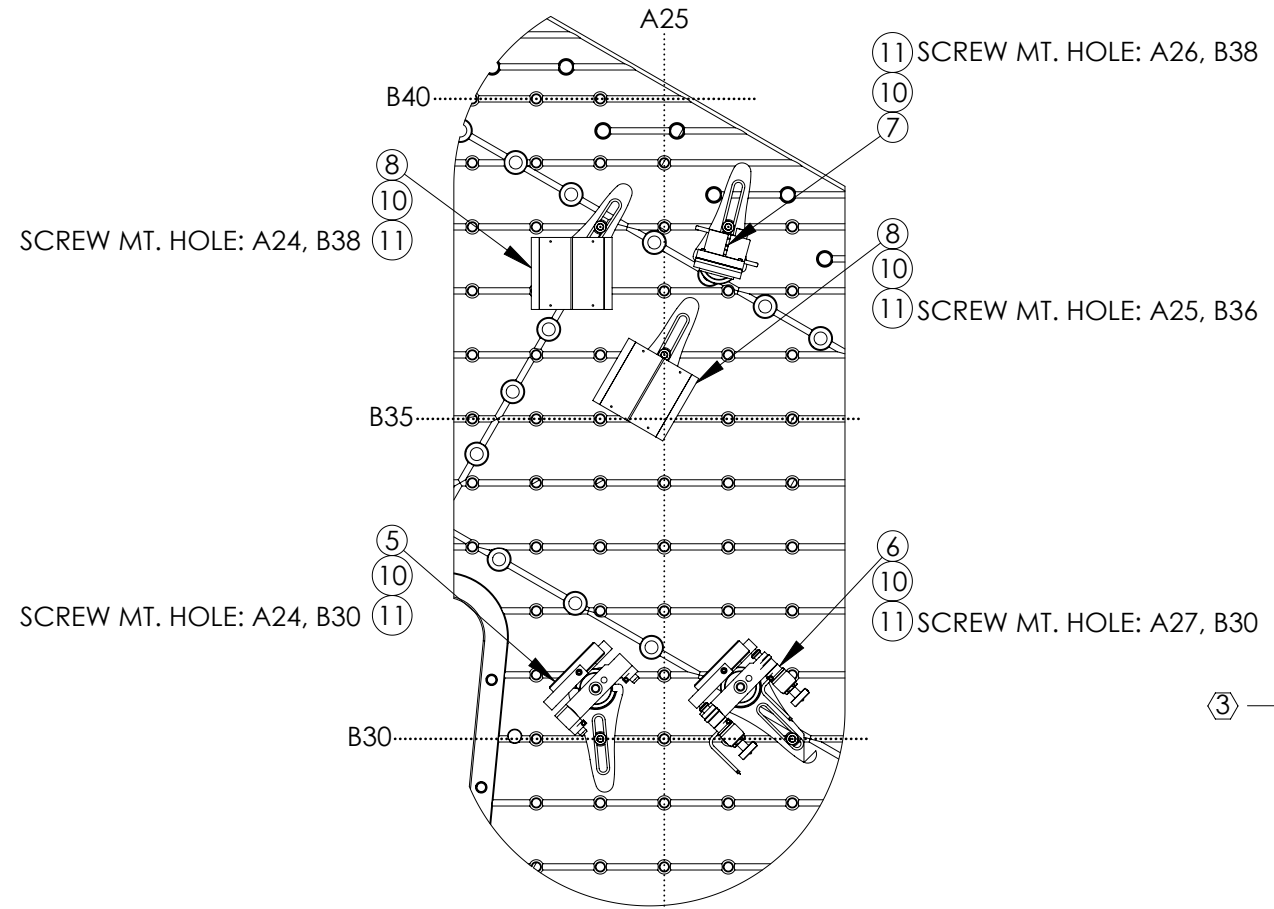
2. REFER TO DOCUMENT D1101296 FOR OPTICAL TABLE HOLE TABULATION CONVENTION.  
 1. REFER TO G1000125 FOR ISI NAMING AND ORIENTATION CONVENTION.  
 NOTES: UNLESS OTHERWISE SPECIFIED.

NOTES AND TOLERANCES: (UNLESS OTHERWISE SPECIFIED)

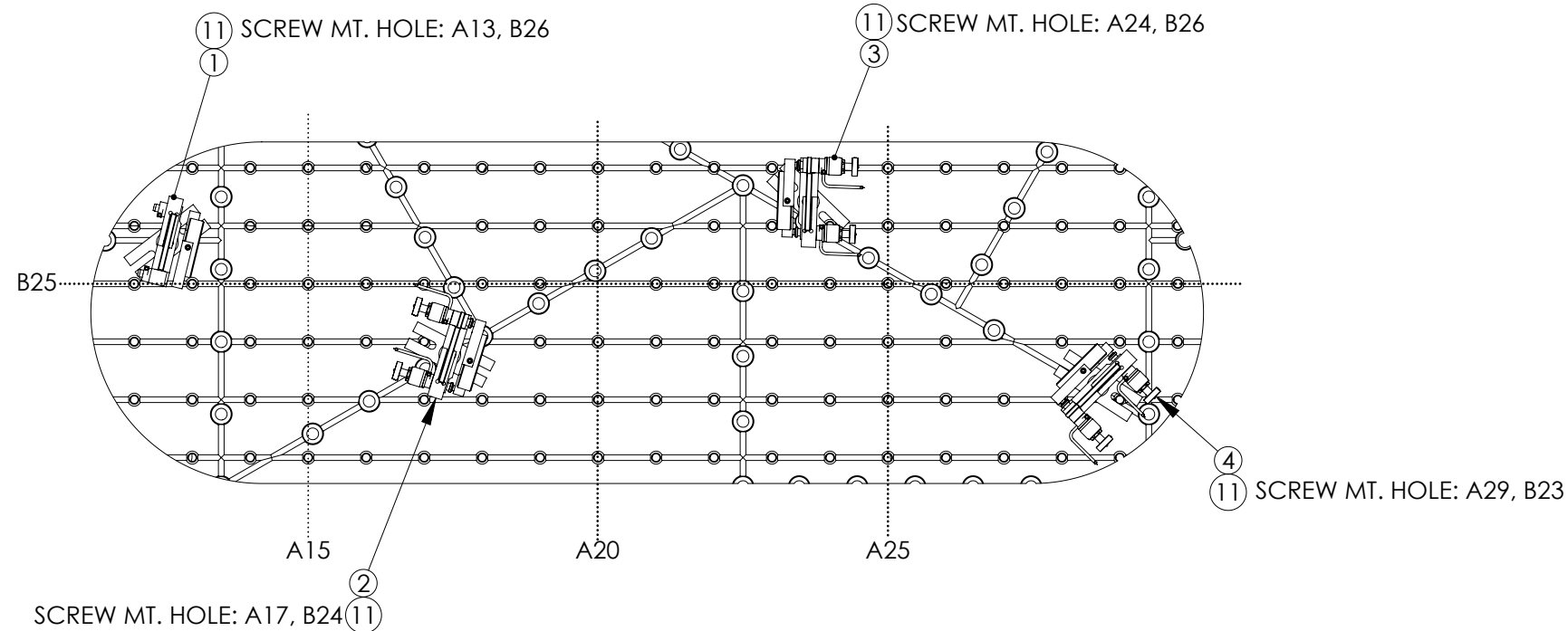
MATERIAL		FINISH		NEXT ASSY		PART NAME		DESIGNER		DRAFTER		CHECKER		APPROVAL	
N/A		N/A μinch		D0900520		ADVANCED LIGO I/O		E.CHAVEZ		E.SANCHEZ		SEE DCC		SEE DCC	
						CALIFORNIA INSTITUTE OF TECHNOLOGY MASSACHUSETTS INSTITUTE OF TECHNOLOGY		02 AUG 2011		02 AUG 2011		SEE DCC		SEE DCC	
						PART NAME		SIZE		DWG. NO.		REV.		SHEET 1 OF 3	
						AdvLIGO SEI HAM3-L1, XYZ LOCAL CS for IO Optic Mount Components		B		D1002235		v6			
								SCALE: 1:12		PROJECTION:					

D1002235 AdvLIGO SEI HAM3-L1, XYZ Local CS for IO Optic Mount Components, PART PDM REV: X-041, DRAWING PDM REV: X-008

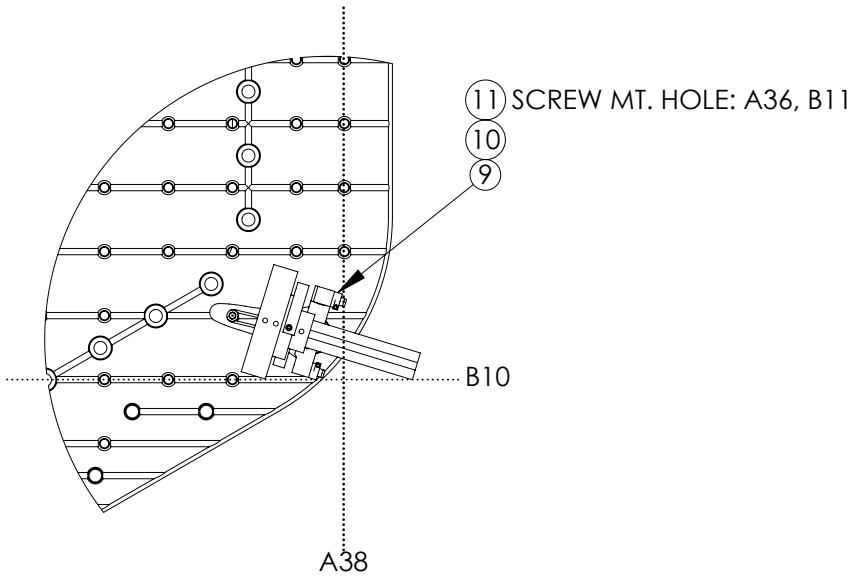
D1002235 AdvLIGO SEI HAM3-L1, XYZ Local CS for IO Optic Mount Components, PART PDM REV: X-041, DRAWING PDM REV: X-008



DETAIL A  
SCALE 1 : 6



DETAIL B  
SCALE 1 : 6



DETAIL D  
SCALE 1:6

ITEM NO.	PART NUMBER	DESCRIPTION	QTY.
11	78056 HOLO-KROME	SCREW, SHC, 1/4-20 X .63 LG.	A/R
10	D0901488	HAM TABLE FORK	6
9	D1101043 (4.585)	ALIGO IO POP BEAMS 3 INCH OPTIC ASSY (L1 HAM3)	1
8	D1101225 (4.435)	BLACK GLASS S DUMP ASSEMBLY	2
7	D1100789 (4.435)	ALIGO IO IN VAC QPD ASSEMBLY (L1 HAM3 MC TRANS 4.435)	1
6	D1002088 (4.435)	ACTUATED RIGID OPTIC MOUNT RIGHT HAND DETAILED ASSEMBLY (L1 HAM3 MC TRANS 4.435)	1
5	D1002075 (4.435)	RIGID OPTIC MOUNT RIGHT HAND DETAILED ASSEMBLY (L1 HAM3 MC TRANS 4.435)	1
4	D1200743 (2.13)	ALIGO, IO, L1/H1, AROM RH7 ASSEMBLY	1
3	D1200742 (2.13)	ALIGO, IO, L1/H1, AROM RH6 ASSEMBLY	1
2	D1200741 (2.13)	ALIGO, IO, L1/H1, AROM LH1 ASSY	1
1	D1200736 (2.13)	ALIGO, IO, L1/H1, ROM LH3 ASSEMBLY	1

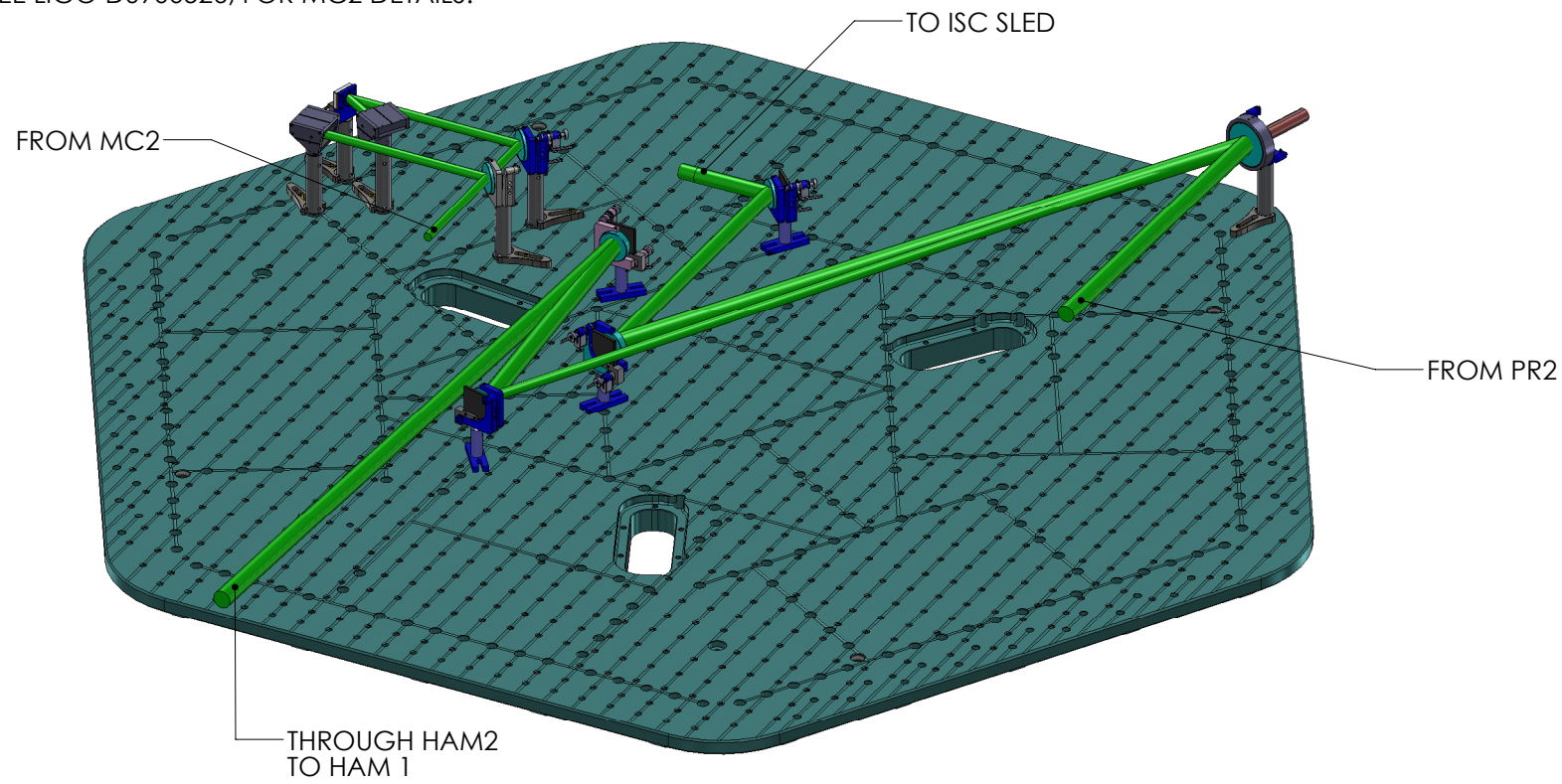
PARTS LIST

③ FIGURES IN PARENTHESES NEXT TO ITEM PART NUMBER INDICATE POSTS HEIGHT.

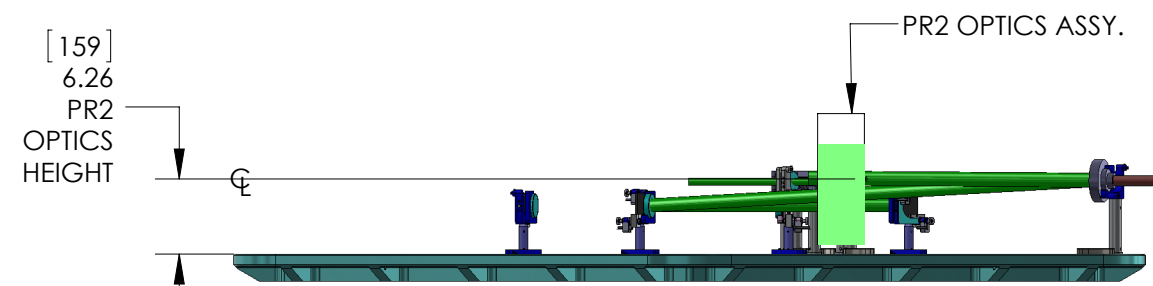
CALIFORNIA INSTITUTE OF TECHNOLOGY  
 MASSACHUSETTS INSTITUTE OF TECHNOLOGY  
 SIZE DWG. NO. **B** D1002235 REV. **v6**  
 SCALE: 1:12 PROJECTION: SHEET 2 OF 3

4. REFERENCE DOCUMENTATION:

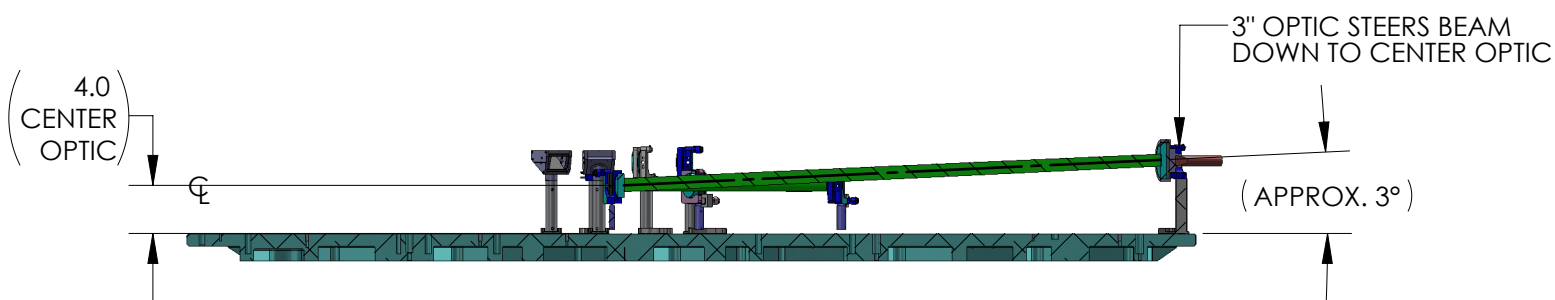
SEE LIGO E1100652, FOR ALIGO I/O IN VACUUM POST SPECIFICATIONS  
 SEE LIGO D1000339, FOR ISC SLED POST HEIGHT DETAILS.  
 SEE LIGO D0900524, FOR PR2 DETAILS.  
 SEE LIGO D0900526, FOR MC2 DETAILS.



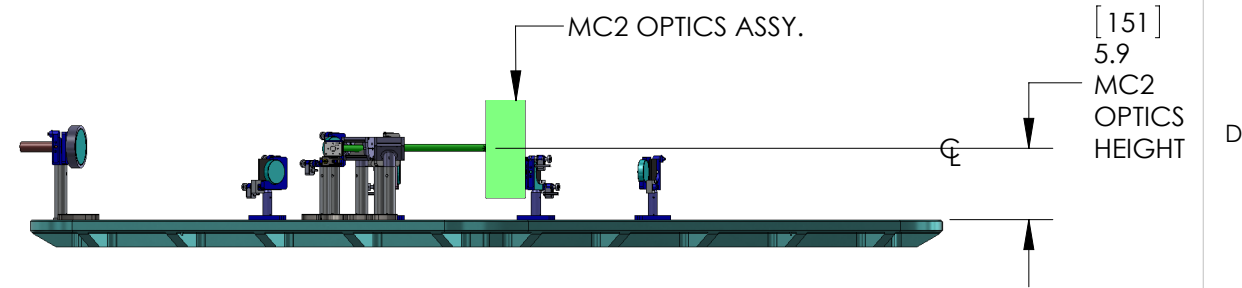
**ISO VIEW**  
 (SUS STRUCTURES, ISC SLED, AND IRRELEVANT TEMS NOT SHOWN FOR CLARITY)



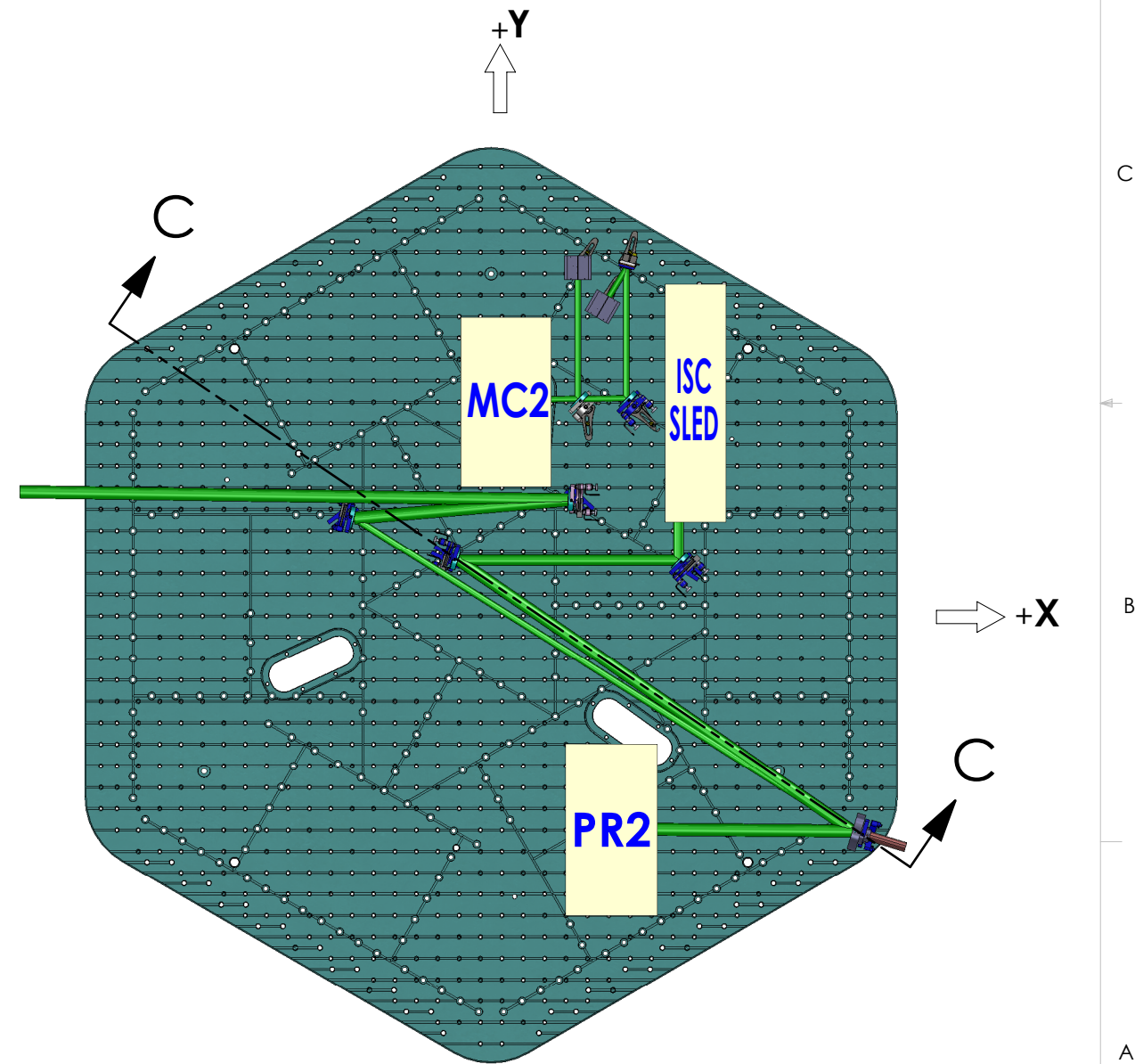
**FRONT**



**SECTION C-C**  
 (ROTATED 34 DEG. CCW)



**REAR VIEW**  
 (ROTATED 180 DEG. CCW)



**TOP VIEW**

**LIGO** CALIFORNIA INSTITUTE OF TECHNOLOGY  
 MASSACHUSETTS INSTITUTE OF TECHNOLOGY

SIZE	DWG. NO.	REV.
B	D1002235	V6
SCALE: 1:128 PROJECTION:		SHEET 3 OF 3

D1002235 AdvLIGO SEI HAM3-L1, XYZ Local CS for IO Optic Mount Components, PART PDM REV: X-041, DRAWING PDM REV: X-008